

Figure 1: Measles IgM positive results per province: South Africa, January 2009-19 July 2010

Table 1: Positive measles IgM results per province: South Africa, January 2009-19 July 2010

	ECP	FSP	GAP	KZP	LPP	MPP	NCP	NWP	WCP	Total
Newly confirmed cases*	8	6	54	19	3	5	3	2	17	117
Cumulative total	1 363	733	5 156	4 078	493	1 890	344	1 155	1 804	17 016

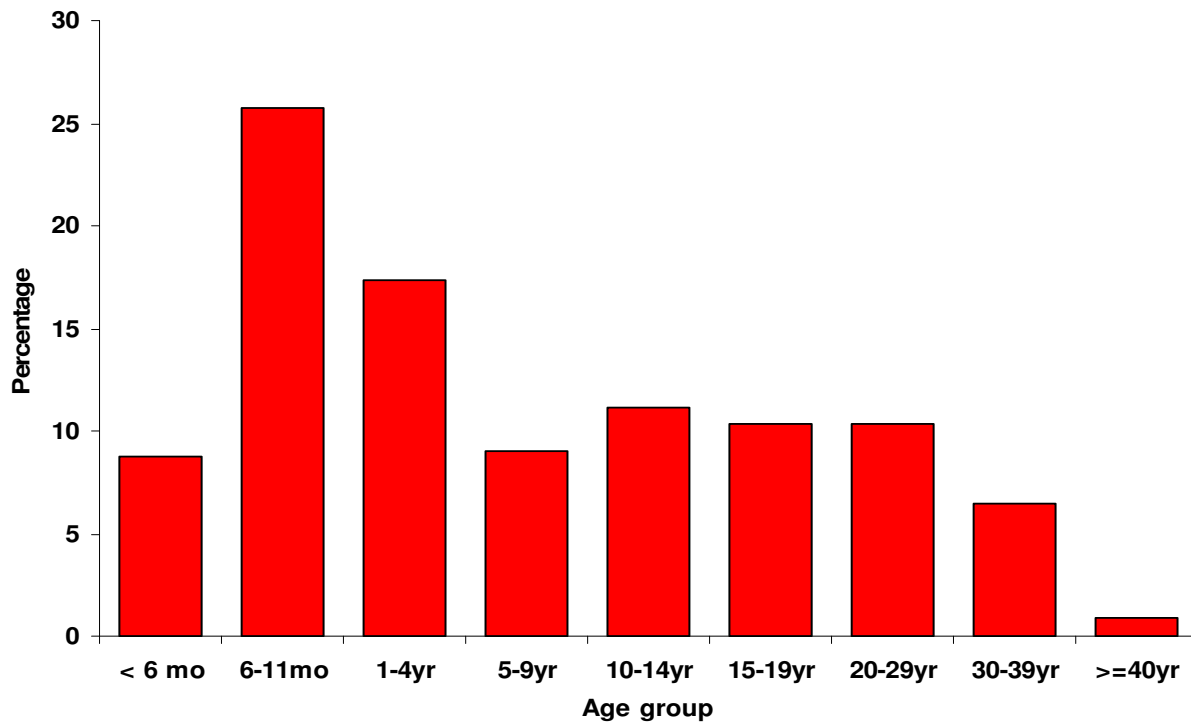
*Cases confirmed since the last report (published weekly on Wednesday afternoon). Due to delays in submission of specimens to the laboratory, these specimens may have been taken > 1 week ago.

Please note that WCP stopped routine measles testing on week 10 and resumed on week 22.

Province abbreviations: ECP=Eastern Cape; FSP=Free State; GAP=Gauteng; KZP=KwaZulu-Natal; LPP=Limpopo; MPP=Mpumalanga; NCP=Northern Cape; NWP=North West; WCP=Western Cape

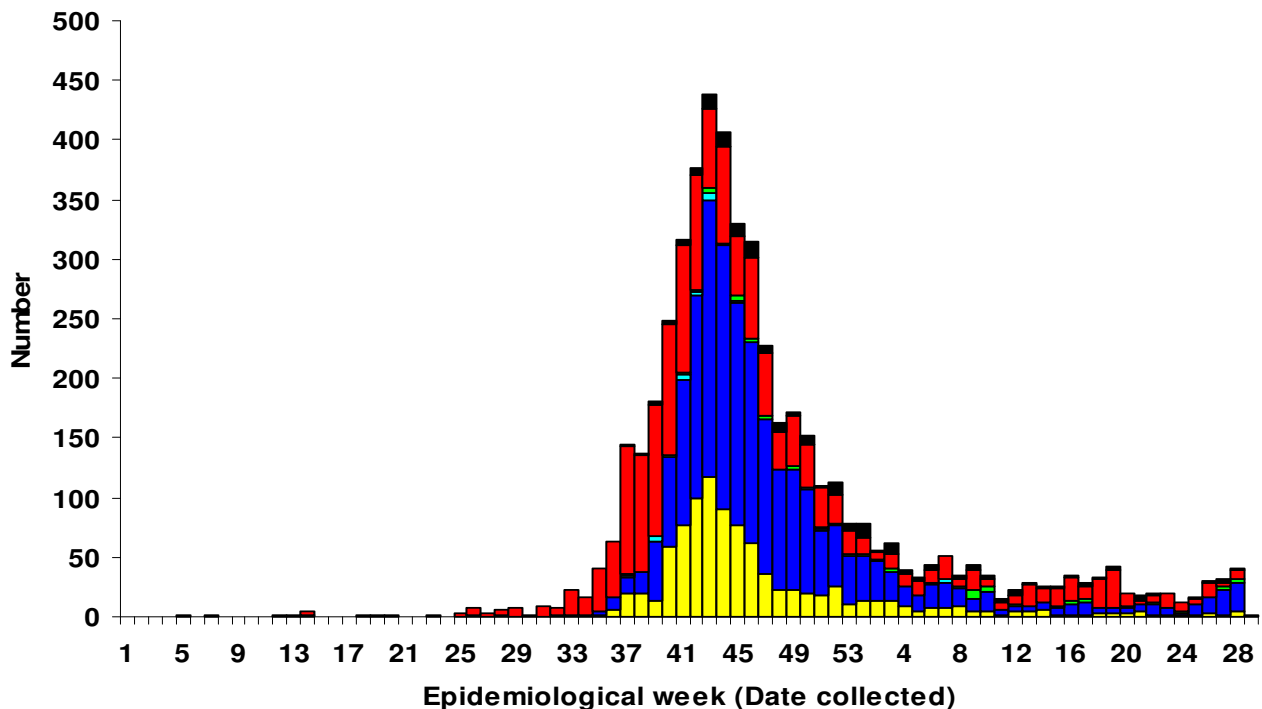
Source: Division of Epidemiology and Virology, NICD

This report only includes laboratory confirmed cases tested at the NICD. Data presented are provisional, as reported to date, Positives are analysed by date of collection. Data may be freely reproduced provided due acknowledgement is given to NICD.



mo=months, yr=years

Figure 2: Age distribution of patients with measles (N=16, 170): South Africa, January 2009-19 July 2010



■ Ekurhuleni ■ Johannesburg ■ Metsweding ■ Sedibeng ■ Tshwane ■ West Rand

Figure 3: Positive measles IgM results per district: Gauteng, South Africa; January 2009-19 July 2010

Source: Division of Epidemiology and Virology, NICD

This report only includes laboratory confirmed cases tested at the NICD. Data presented are provisional, as reported to date, Positives are analysed by date of collection. Data may be freely reproduced provided due acknowledgement is given to NICD.

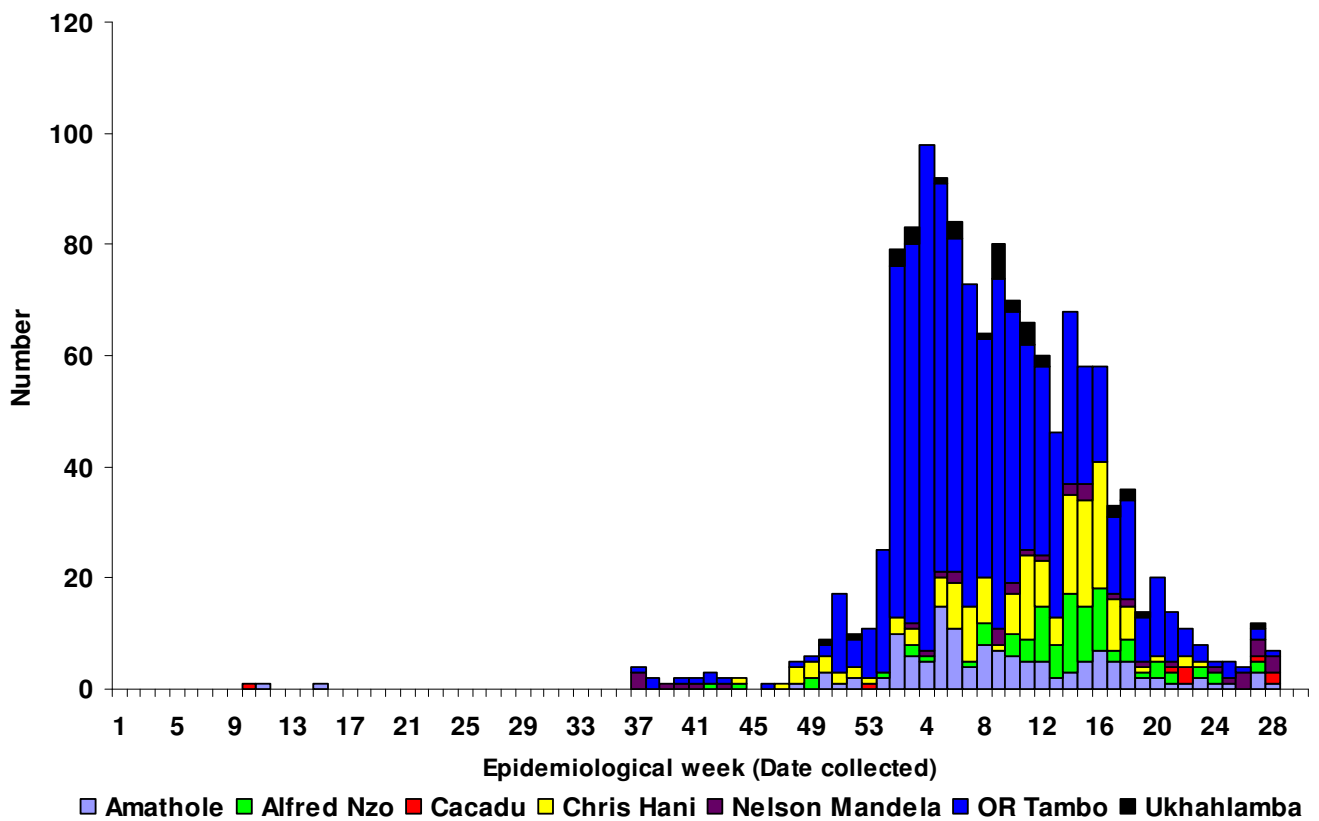


Figure 4: Positive Measles IgM results per district: Eastern Cape, South Africa; January 2009-19 July 2010

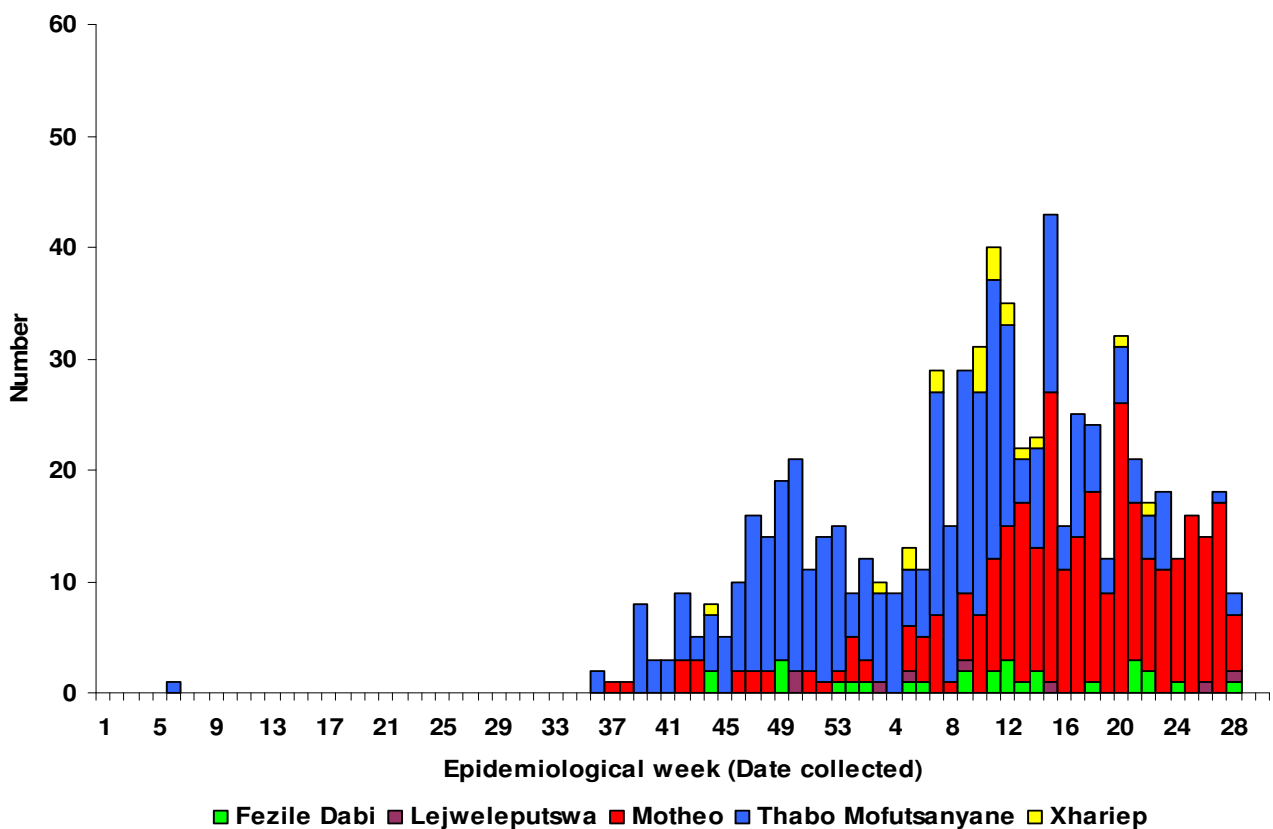


Figure 5: Positive Measles IgM results per district: Free State, South Africa; January 2009-19 July 2010

Source: Division of Epidemiology and Virology, NICD

This report only includes laboratory confirmed cases tested at the NICD. Data presented are provisional, as reported to date, Positives are analysed by date of collection. Data may be freely reproduced provided due acknowledgement is given to NICD.

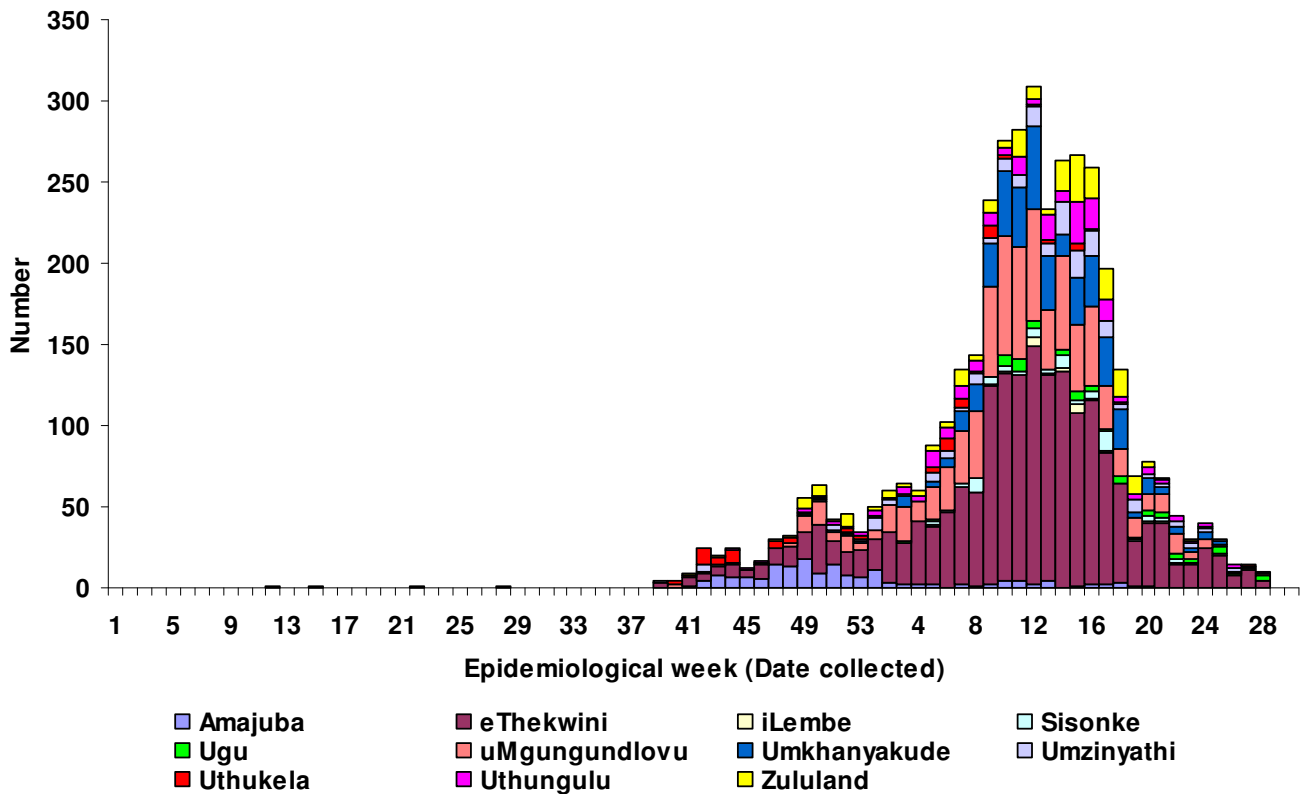


Figure 6: Positive Measles IgM results per district: KwaZulu-Natal, South Africa; January 2009-19 July 2010

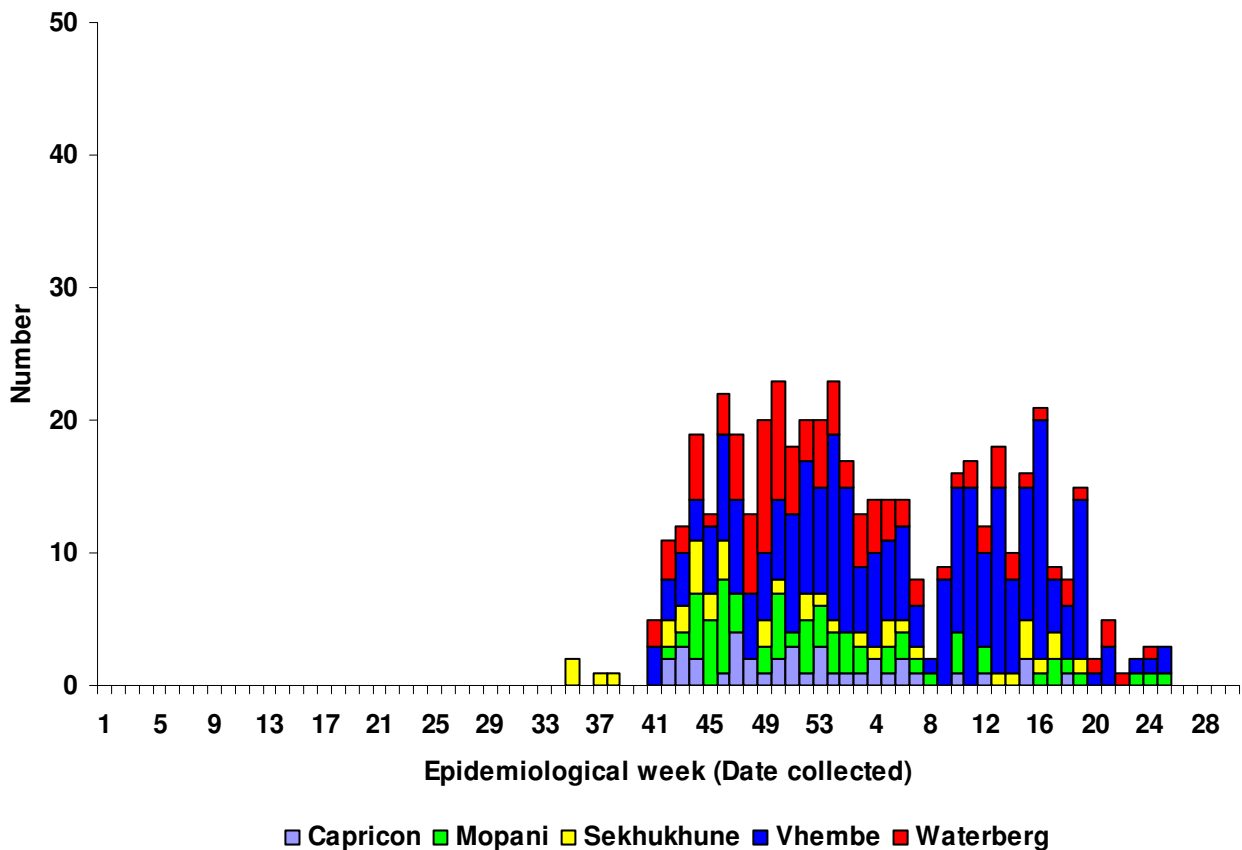


Figure 7: Positive Measles IgM results per district: Limpopo, South Africa; January 2009-19 July 2010

Source: Division of Epidemiology and Virology, NICD

This report only includes laboratory confirmed cases tested at the NICD. Data presented are provisional, as reported to date, Positives are analysed by date of collection. Data may be freely reproduced provided due acknowledgement is given to NICD.

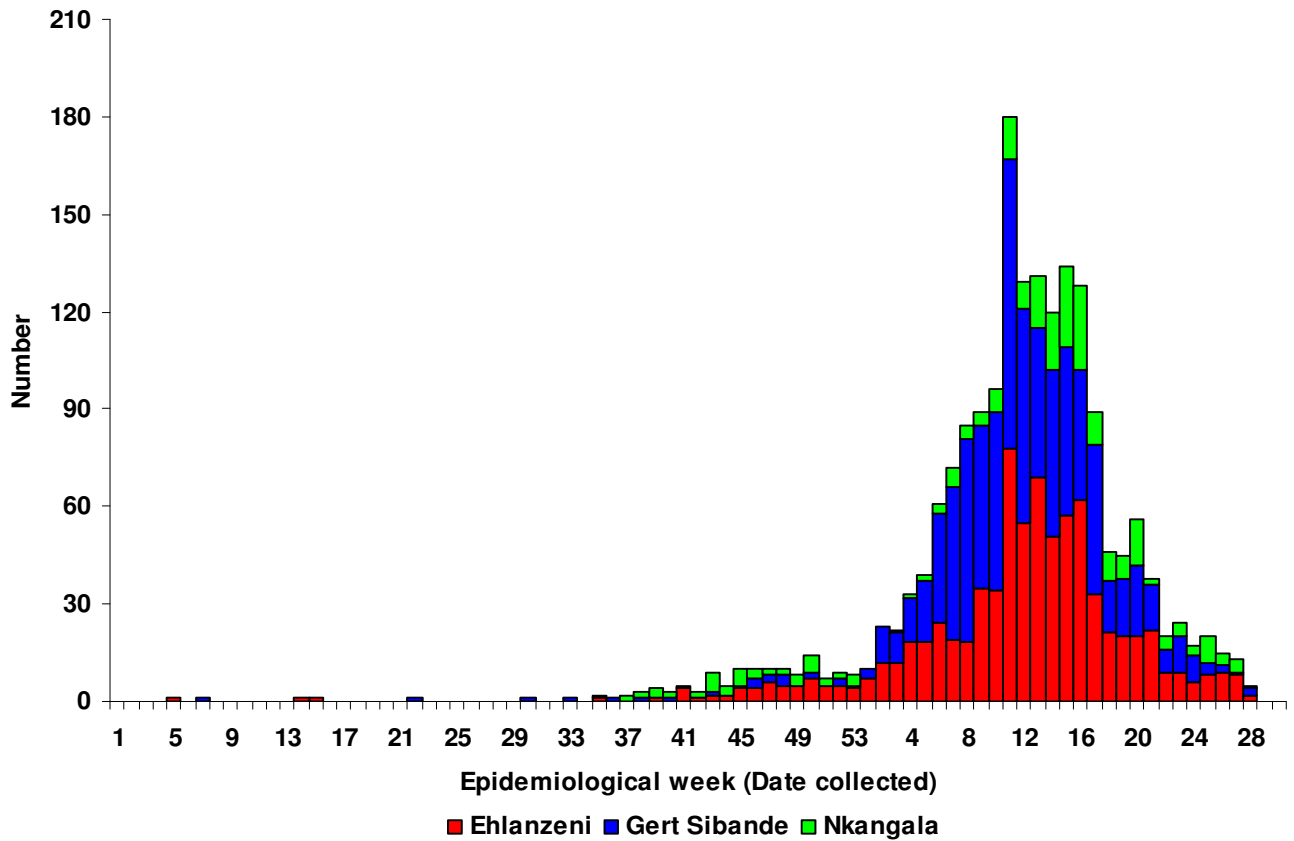


Figure 8: Positive Measles IgM results per district: Mpumalanga, South Africa; January 2009-19 July 2010

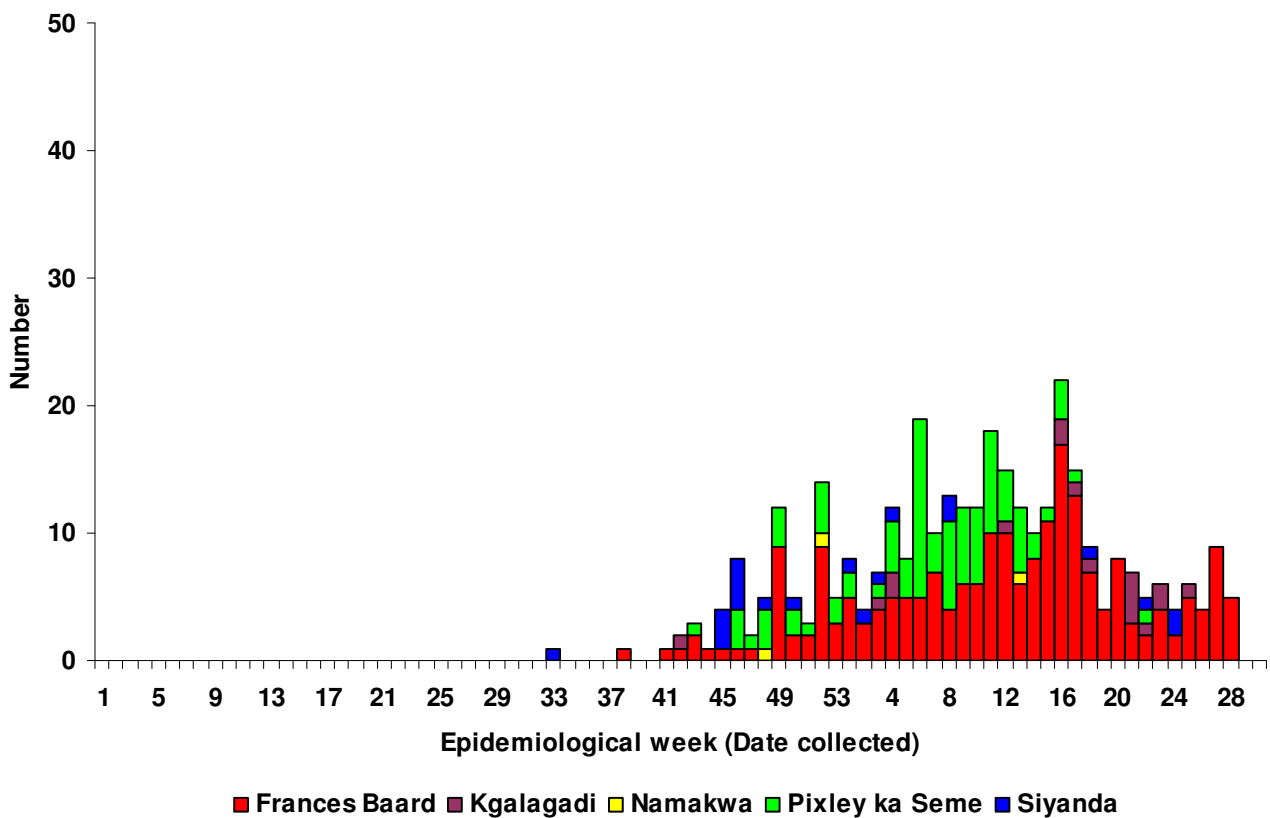


Figure 9: Positive Measles IgM results per district: Northern Cape, South Africa; January 2009-19 July 2010

Source: Division of Epidemiology and Virology, NICD

This report only includes laboratory confirmed cases tested at the NICD. Data presented are provisional, as reported to date, Positives are analysed by date of collection. Data may be freely reproduced provided due acknowledgement is given to NICD.

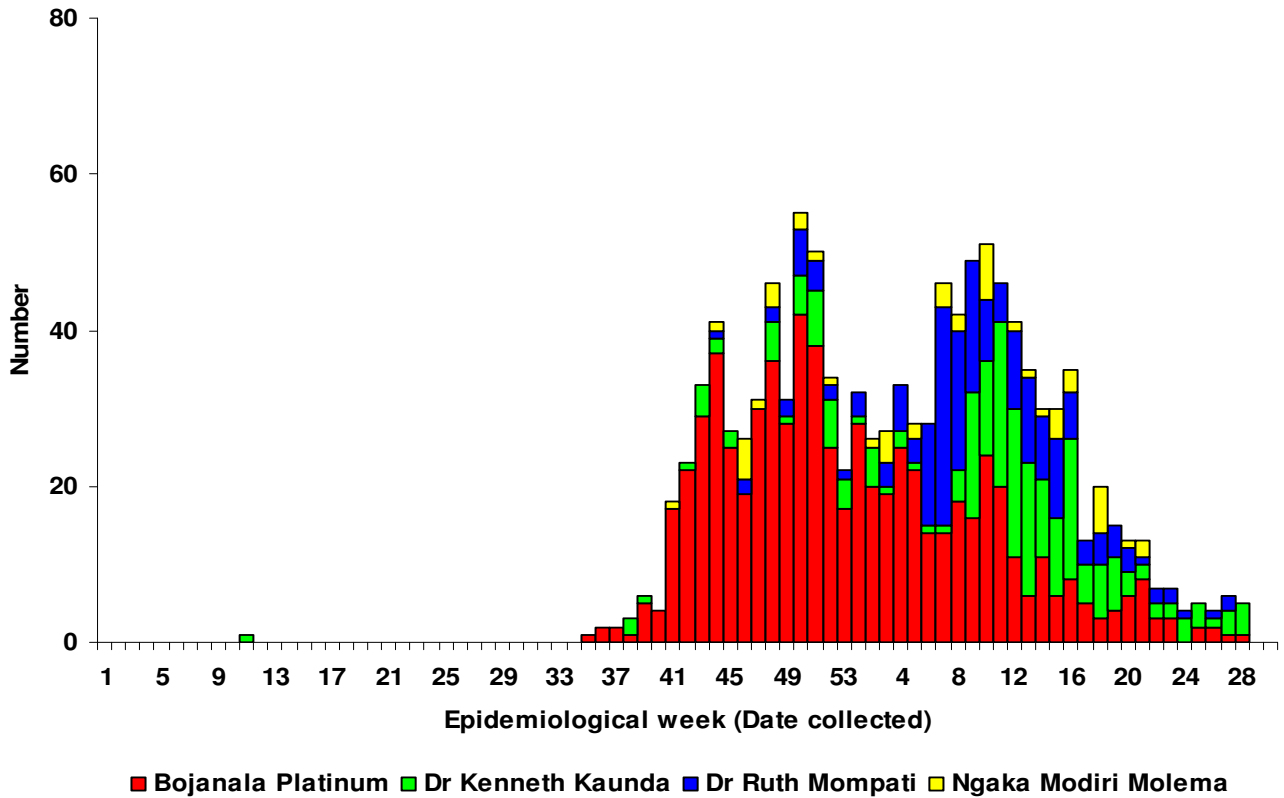


Figure 10: Positive Measles IgM results per district: North West, South Africa; January 2009-19 July 2010

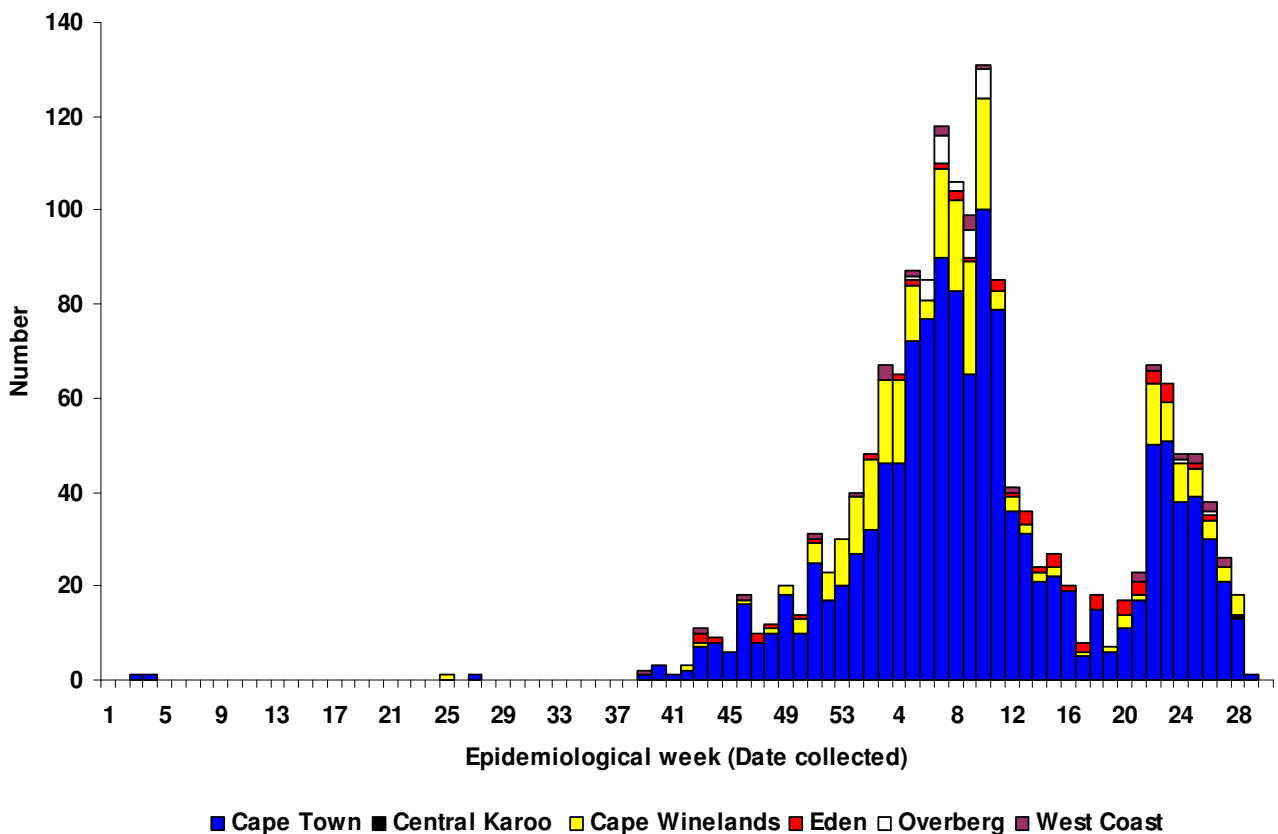


Figure 11: Positive Measles IgM results per district: Western Cape, South Africa; January 2009-19 July 2010

Please note that WCP stopped routine measles testing on week 10 and resumed on week 22.

Source: Division of Epidemiology and Virology, NICD

This report only includes laboratory confirmed cases tested at the NICD. Data presented are provisional, as reported to date, Positives are analysed by date of collection. Data may be freely reproduced provided due acknowledgement is given to NICD.