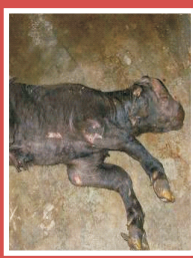




# Rift Valley Fever



health

Department:  
Health  
REPUBLIC OF SOUTH AFRICA

## WHAT IS RIFT VALLEY FEVER?

- Rift Valley fever is a disease which is spread to sheep, cattle and goats by mosquitoes, and it causes abortion and death of the animals.
- Humans become infected from handling sick animals, carcasses or meat, or less often from mosquito bites.
- The disease does not spread from one person to another.

## HOW DO PEOPLE BECOME INFECTED?

- The disease mainly affects farmers and farm workers, slaughtermen and veterinarians.
- People become infected from contact of cuts and scratches on their skin with blood or organs of sick or dead animals, or through splashing of blood and other fluids into the eyes, nose or mouth.
- Infection usually occurs during slaughtering or butchering of sick animals, assisting with animal births, during veterinary work, or from handling of carcasses or aborted fetuses.

## HOW CAN YOU PREVENT AND CONTROL THE DISEASE?

- Wear protective clothing such as gloves and masks when handling sick animals or carcasses.
- Do not slaughter sick animals for meat.
- Boil raw milk before use.
- Cook all meat thoroughly.
- Avoid moving animals from one area to another.
- Protect yourself from mosquito bites: wear long sleeves and trousers at night, use mosquito repellants, and avoid going outdoors at night.
- Burn or bury dead animals.
- Allow animals to be vaccinated against Rift Valley fever.

## HOW DO YOU RECOGNIZE THE DISEASE?

Visit your nearest hospital or clinic if you develop or more of the following symptoms:

- Fever
- Headache
- Muscle or joint pains
- Neck stiffness
- Sore eyes
- Vomiting



**health**

Department:  
Health  
REPUBLIC OF SOUTH AFRICA

Department of Health  
Tel: 012 395 9000  
[www.doh.gov.za](http://www.doh.gov.za)