

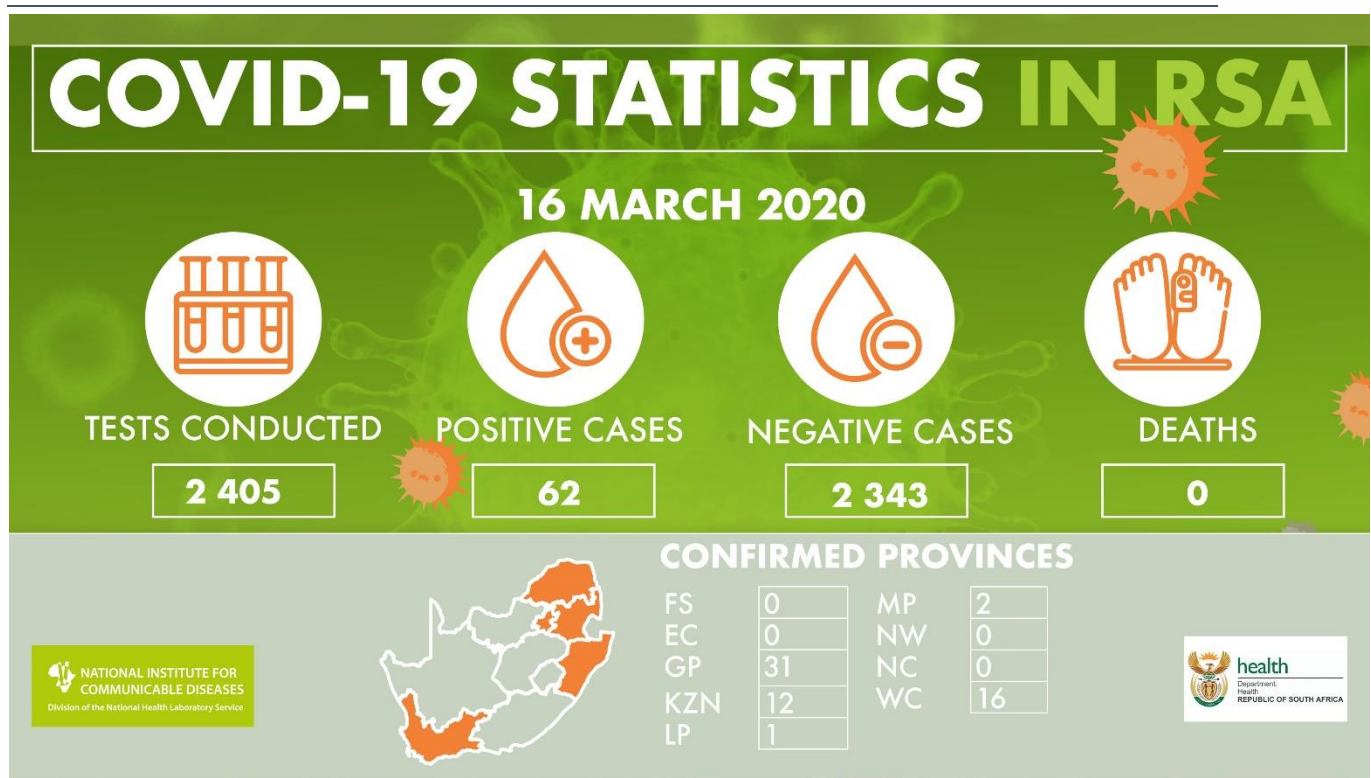
SITUATIONAL REPORT No. 41

Recent Updates

- As of 16 March 2020, there have been 11 new COVID-19 cases, taking the total number of positive COVID-19 cases to 62 in South Africa. There are more cases but these are yet to be verified.
- South African President Cyril Ramaphosa announced the closure of a number of ports of entry as means of limiting the transmission of COVID-19. The list of closed ports can be found on the following link: <https://sacoronavirus.co.za/2020/03/16/south-african-closures-due-to-covid-19/>
- Global confirmed case numbers are reported as 167515 including 6606 deaths, 16 March <https://gisanddata.maps.arcgis.com/apps/opsdashboard/index.html#/bda7594740fd40299423467b48e9ecf6>
- Coronavirus has killed 148 people and infected more than 6600 in France, where, along with Spain, infections and fatalities have been surging at a pace just days behind that of Italy, the epicentre of the outbreak in Europe, 16 March
- Egypt reported 40 new confirmed cases and two more deaths because of coronavirus, bringing the total of COVID-19 related deaths in the country to four, 16 March
- US President Donald Trump issued new guidelines to help fight the coronavirus, including a recommendation that people avoid social gatherings of more than 10 people, discretionary travel, and going to bars, restaurants and food courts, 16 March
- Germany reported a increase in coronavirus cases by more than 1100 to now 6012 compared to the previous day, according to Robert Koch Institute for disease control, 16 March
- The total number of cases and deaths outside China has overtaken the total number of cases in China, 16 March.
- Four new countries/territories/areas (African Region [2], European Region [1] and Region of the Americas [1]) in have reported cases of COVID-19 in the past 24 hours since 15 March.
- 150 countries have reported at least one Covid-19 case with 82 countries with local transmission.
- For the latest available global update from the World Health Organization, see the Situation Report 56 https://www.who.int/docs/default-source/coronaviruse/situation-reports/20200316-sitrep-56-covid-19.pdf?sfvrsn=9fda7db2_6



Epidemiological Update for South Africa



Port Health Screening Updates

- No direct flights were received in South Africa from high risk countries. Forty-three conveyances were received: seven flights through Cape Town International Airport, 21 flights through OR Tambo International Airport and 15 sea freight vessels through Cape Town harbor. All flights and freight vessels were monitored and cleared.
- 4179 travelers from high risk area arrived in the past 24 hours, 15 March.

Table 2: Travelers screened by thermal scanner monitoring at ports-of-entry in South Africa, 16 March 2020

Scanned Travelers	Passengers found with elevated temperature	Passengers screened and cleared	Passengers meeting COVID-19 suspected case criteria
^a 31711	0	0	0

^a1950 Travel health questionnaires completed by these travellers