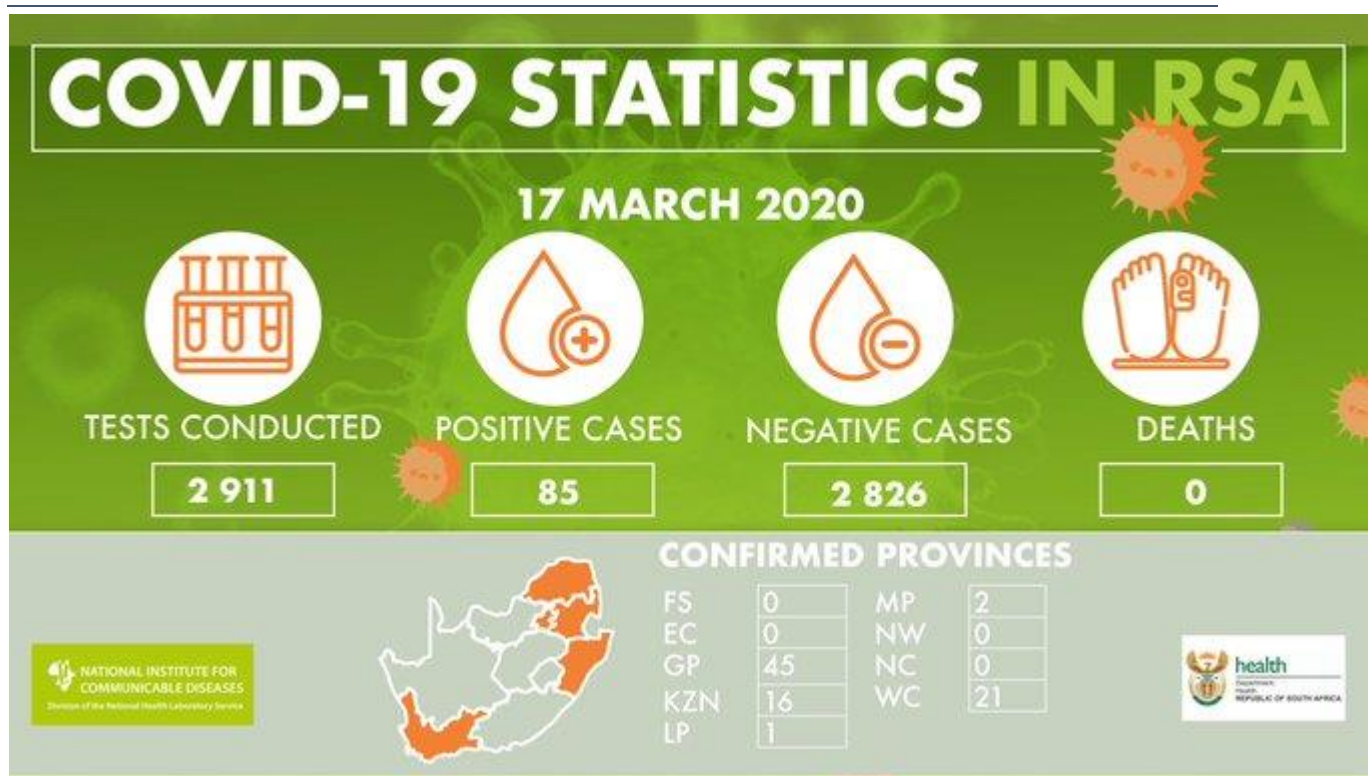


### Recent Updates

- As of 17 March 2020, there have been 23 new COVID-19 cases, taking the total number of positive COVID-19 cases to 85 in South Africa.
- The Minister of International Relations and Cooperation of the Republic of South Africa issued a travel advisory in light of the announcement on 16 March 2020 by the Government declaring a State of National Disaster. The Travel advisory in response to the COVID-19 Pandemic can be accessed through the link below:  
<https://sacoronavirus.co.za/2020/03/16/south-african-closures-due-to-covid-19/>
- Global confirmed case numbers are reported as 17911 including 7426 deaths, 17 March  
<https://gisanddata.maps.arcgis.com/apps/opsdashboard/index.html#/bda7594740fd40299423467b48e9ecf6>
- The World Health Organization (WHO) has warned that the coronavirus pandemic is a "defining global health crisis of our time", as it urged countries to test all suspected cases, 17 March.
- President Emmanuel Macron has told French citizens to "severely restrict movements for the next 15 days at least" and limit social contacts as much as possible. Anyone outside will have to provide proof of their reasons for travelling and 100,000 law enforcement officers would be enforcing the quarantine measures , 17 March.
- US President Donald Trump has escalated the war of words with Beijing by describing the outbreak as the "China virus" against the advice of the WHO, 17 March.
- In Spain, one of the European countries most affected by COVID-19, the virus claimed more than 150 lives in the past 24 hours, bringing the total death toll to 491, 17 March.
- China has authorised clinical trials on its first vaccine developed to combat the new coronavirus, 17 March.
- Eight new countries/territories/areas (African Region [3], Eastern Mediterranean Region [1], Region of the Americas [3], and Western Pacific Region [1]) in have reported cases of COVID-19 in the past 24 hours since 16 March.
- For the latest available global update from the World Health Organization, see the Situation Report 57  
[https://www.who.int/docs/default-source/coronaviruse/situation-reports/20200317-sitrep-57-covid-19.pdf?sfvrsn=a26922f2\\_4](https://www.who.int/docs/default-source/coronaviruse/situation-reports/20200317-sitrep-57-covid-19.pdf?sfvrsn=a26922f2_4)



Epidemiological Update for South Africa



Port Health Screening Updates

- No direct flights were received in South Africa from high risk countries. Forty-three conveyances were received: seven flights through Cape Town International Airport, 21 flights through OR Tambo International Airport and 15 sea freight vessels through Cape Town harbor. All flights and freight vessels were monitored and cleared.
- 4179 travelers from high risk area arrived in the past 24 hours, 15 March.

Table 2: Travelers screened by thermal scanner monitoring at ports-of-entry in South Africa, 16 March 2020

Scanned Travelers	Passengers found with elevated temperature	Passengers screened and cleared	Passengers meeting COVID-19 suspected case criteria
<sup>a</sup> 31711	0	0	0

<sup>a</sup>1950 Travel health questionnaires completed by these travellers