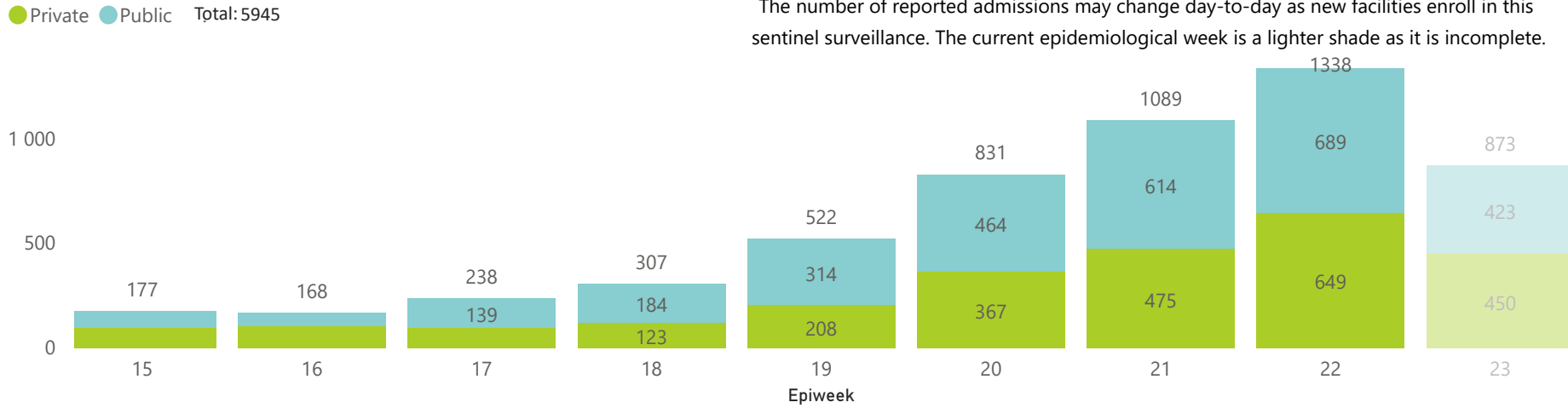




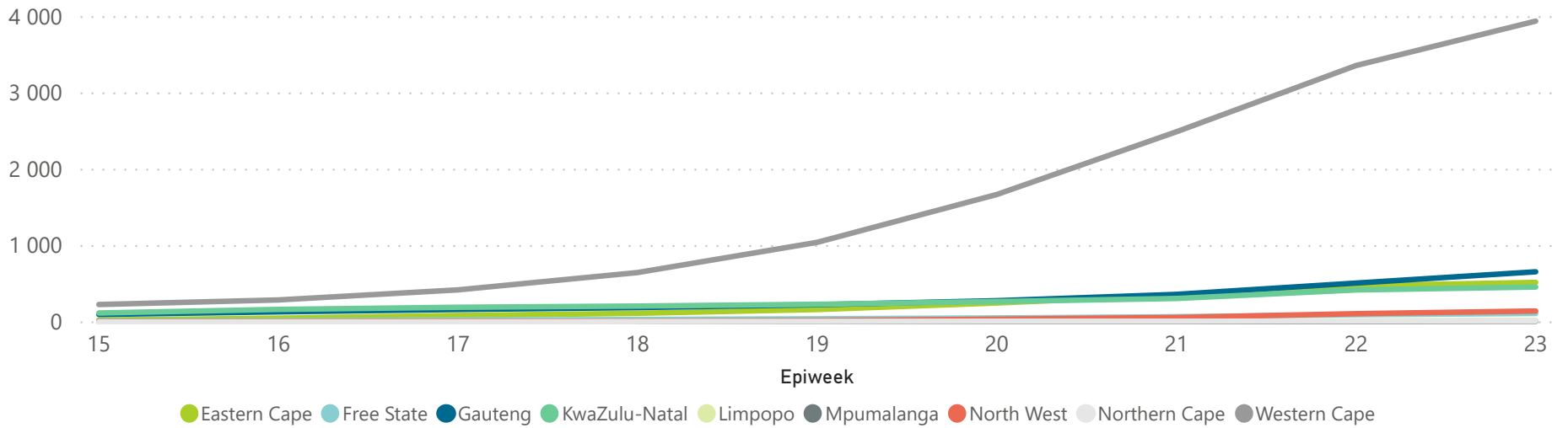
This report presents data collected using clinical information from admitted patients at selected hospitals to identify trends in admissions of COVID-19 patients. Not all hospitals currently participate and new facilities continue to enroll. The data below refer to admitted patients with laboratory-confirmed COVID-19.



Hospital admissions of COVID-19 cases, by health sector, by epidemiological week



Cumulative reported admissions by province, by epidemiological week



Ward of currently admitted patients

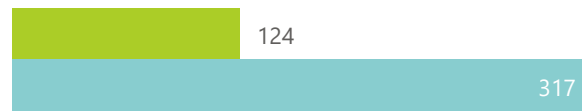
Currently in Hospital: 1916



● ICU ● High Care ● Isolation ● General

Interventions for currently admitted patients

Currently in Hospital: 1916



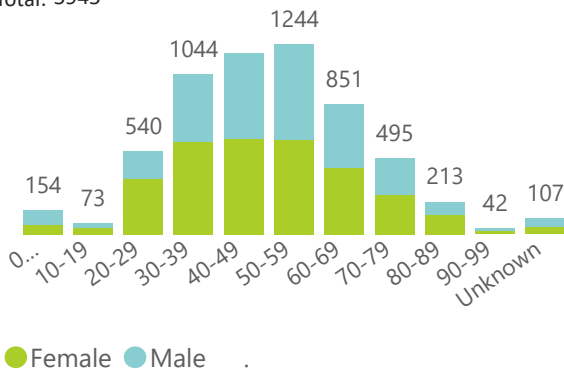
● Current Ventilated ● Current Oxygen

Total healthcare workers admitted	Current healthcare workers admitted
210	51
% of total admitted	% of current admitted
4%	3%

Healthcare worker is defined as a Doctor, Nurse, Allied Health, Lab worker, Paramedic or Porter

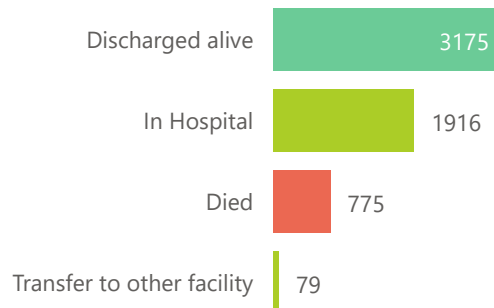
Admissions to date by age group and sex

Total: 5945



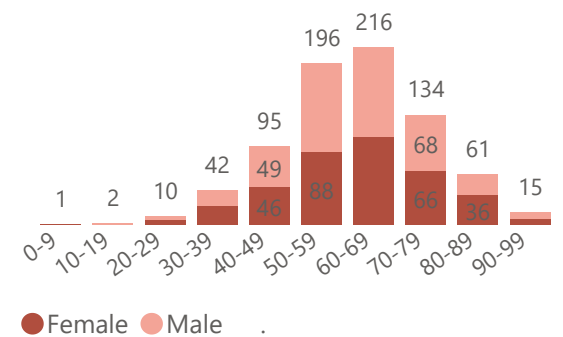
Admissions to date by discharge type

Total: 5945



Deaths to date by age group and sex

Total: 775

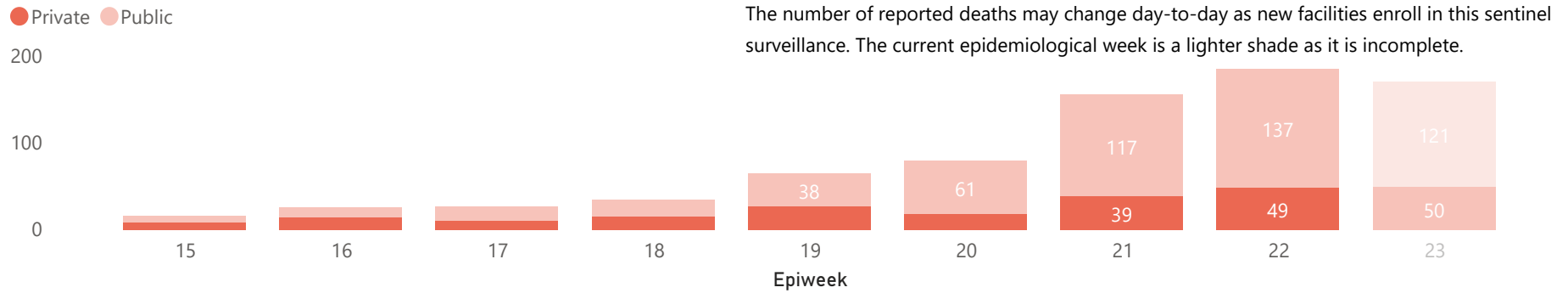




This report presents data collected using clinical information from admitted patients at selected hospitals to identify trends in admissions of COVID-19 patients. Not all hospitals currently participate and new facilities continue to enroll. The data below refer to admitted patients with laboratory-confirmed COVID-19.



Deaths by epidemiological week and sector



Summary of reported COVID-19 admissions by province, by sector

Province	Facilities reporting	Admissions to date	Deaths to date	Discharged to date	Currently admitted	Current in ICU	Currently ventilated
<b>Eastern Cape</b>	<b>16</b>	<b>525</b>	<b>74</b>	<b>218</b>	<b>210</b>	<b>45</b>	<b>22</b>
Public	5	190	31	73	63	7	7
Private	11	335	43	145	147	38	15
<b>Free State</b>	<b>11</b>	<b>122</b>	<b>8</b>	<b>90</b>	<b>22</b>	<b>2</b>	<b>2</b>
Public	3	85	3	68	14	0	0
Private	8	37	5	22	8	2	2
<b>Gauteng</b>	<b>71</b>	<b>670</b>	<b>25</b>	<b>320</b>	<b>313</b>	<b>40</b>	<b>5</b>
Public	4	69	4	34	22	3	0
Private	67	601	21	286	291	37	5
<b>KwaZulu-Natal</b>	<b>38</b>	<b>474</b>	<b>43</b>	<b>290</b>	<b>135</b>	<b>20</b>	<b>6</b>
Public	4	49	0	38	9	0	0
Private	34	425	43	252	126	20	6
<b>Limpopo</b>	<b>5</b>	<b>24</b>	<b>2</b>	<b>16</b>	<b>6</b>	<b>3</b>	<b>3</b>
Public	1	4	0	3	1	1	1
Private	4	20	2	13	5	2	2
<b>Mpumalanga</b>	<b>5</b>	<b>13</b>	<b>0</b>	<b>8</b>	<b>5</b>	<b>0</b>	<b>0</b>
Private	5	13	0	8	5	0	0
<b>North West</b>	<b>10</b>	<b>148</b>	<b>4</b>	<b>54</b>	<b>81</b>	<b>1</b>	<b>0</b>
Public	2	25	2	15	1	1	0
Private	8	123	2	39	80	0	0
<b>Northern Cape</b>	<b>6</b>	<b>16</b>	<b>0</b>	<b>12</b>	<b>3</b>	<b>0</b>	<b>0</b>
Public	1	6	0	4	2	0	0
Private	5	10	0	8	1	0	0
<b>Western Cape</b>	<b>79</b>	<b>3953</b>	<b>619</b>	<b>2167</b>	<b>1141</b>	<b>154</b>	<b>86</b>
Public	44	2734	489	1550	684	23	17
Private	35	1219	130	617	457	131	69
<b>Total</b>	<b>241</b>	<b>5945</b>	<b>775</b>	<b>3175</b>	<b>1916</b>	<b>265</b>	<b>124</b>

