

Sunday, 23 May 2021

## NICD COVID-19 Surveillance in Selected Hospitals

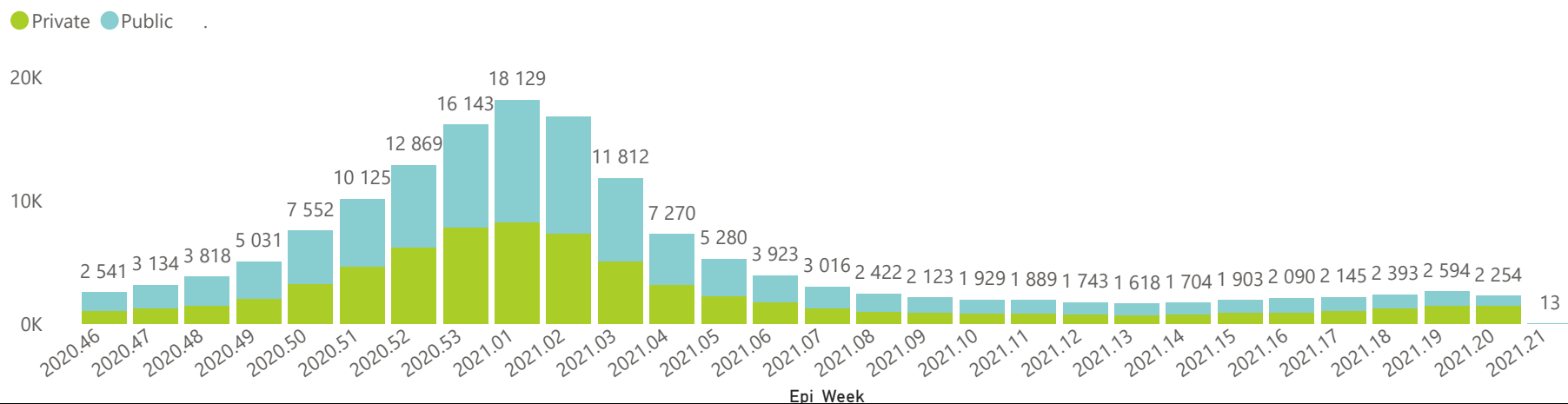
National



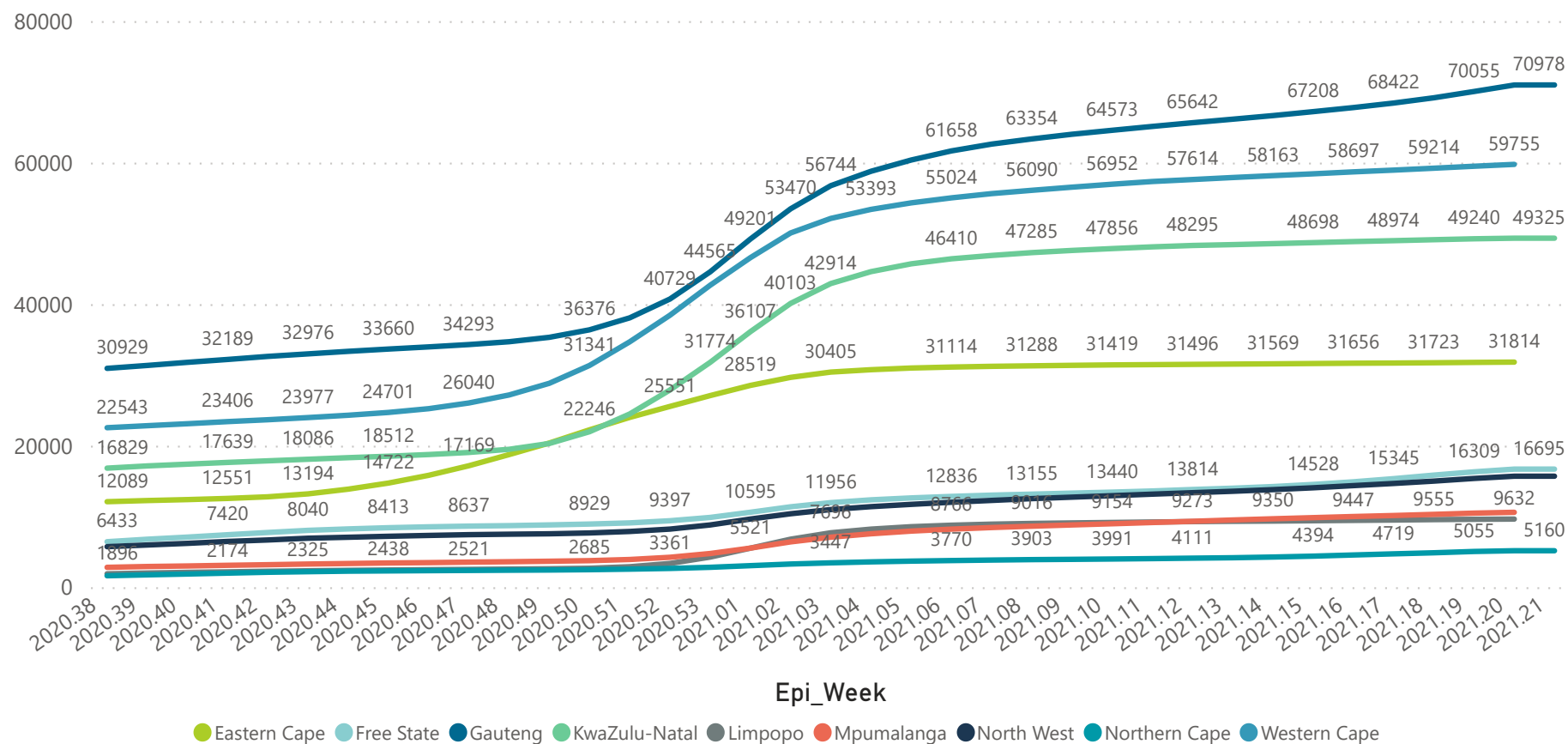
The number of reported admissions may change day-to-day as enrolled facilities back-capture historical data. There are some discharges and deaths that are in the process of being updated in Gauteng hospitals which will change the outcomes. The data below refer to admitted patients with laboratory-confirmed COVID-19.



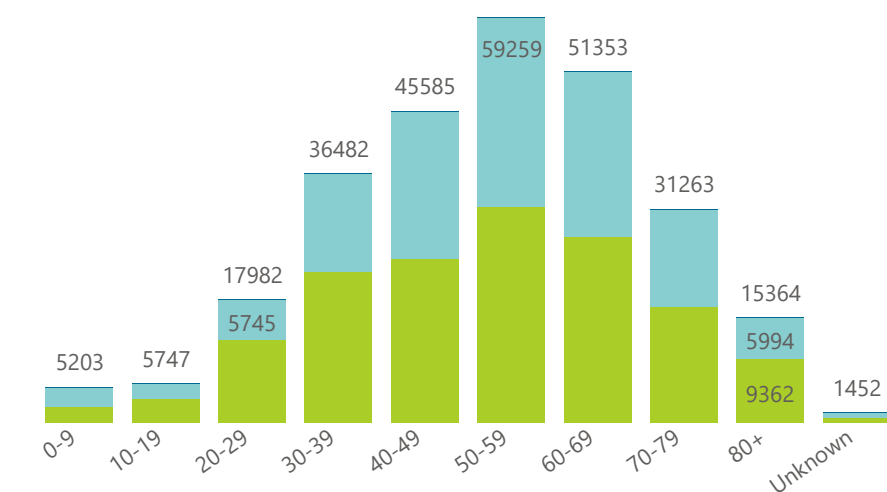
Hospital admissions of COVID-19 cases, by health sector, by epidemiological week



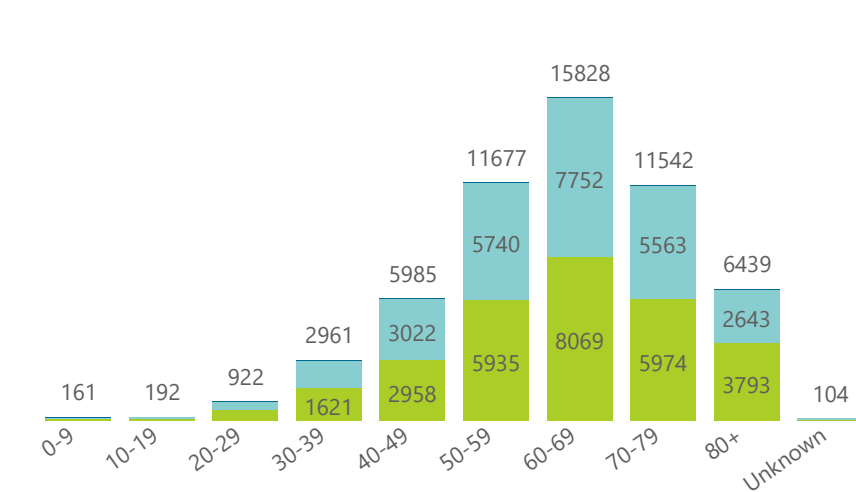
Cumulative reported admissions by province, by epidemiological week



Admissions to date by age group and sex



Deaths to date by age group and sex



Female Male Unknown

Female Male Unknown

Sunday, 23 May 2021

## NICD COVID-19 Surveillance in Selected Hospitals

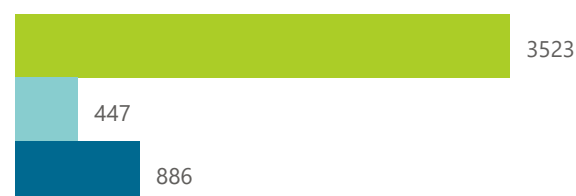
National



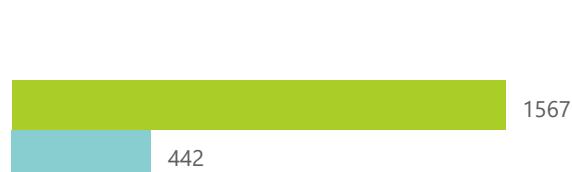
The number of reported admissions may change day-to-day as enrolled facilities back-capture historical data. The Western Cape government has been unable to provide daily data on patients who are on oxygen or ventilated. The data below refer to admitted patients with laboratory-confirmed COVID-19.



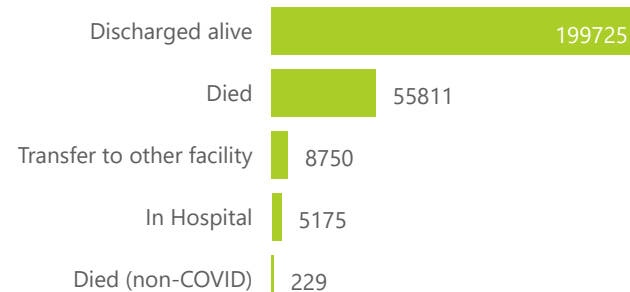
## Ward of currently admitted patients



## Interventions for currently admitted patients



## Admissions to date by discharge type

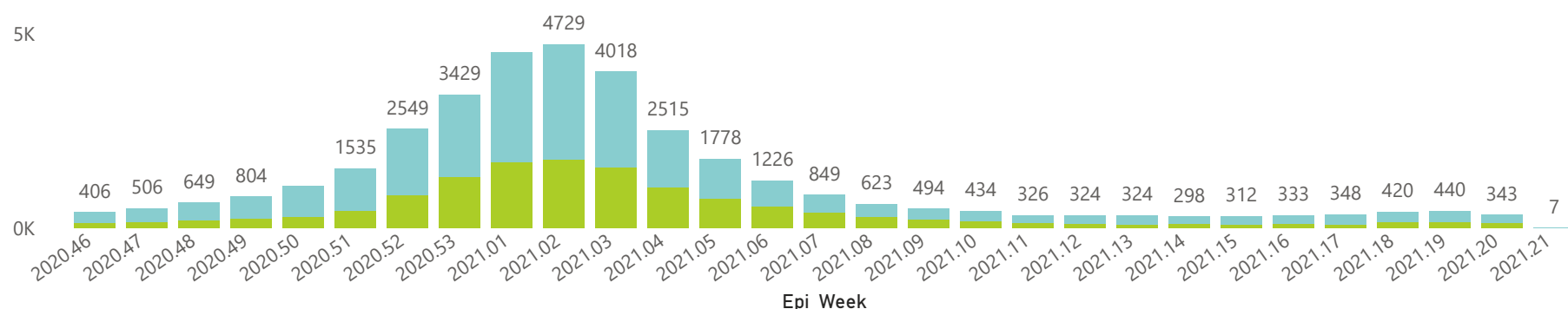


● General Ward ● High Care ● Intensive Care Unit

● Currently Oxygenated ● Currently Ventilated

## Deaths by epidemiological week and sector

● Private ● Public



## Summary of reported COVID-19 admissions by province, by sector

| Province             | Facilities Reporting | Admissions to Date | Died to Date | Discharged to date | Currently Admitted | Currently in ICU | Currently Ventilated | Currently Oxygenated | Admissions in Previous Day |
|----------------------|----------------------|--------------------|--------------|--------------------|--------------------|------------------|----------------------|----------------------|----------------------------|
| <b>Eastern Cape</b>  | <b>103</b>           | <b>31815</b>       | <b>9487</b>  | <b>20618</b>       | <b>97</b>          | <b>13</b>        | <b>4</b>             | <b>31</b>            | <b>1</b>                   |
| Private              | 18                   | 9560               | 2293         | 7165               | 63                 | 13               | 3                    | 13                   | 1                          |
| Public               | 85                   | 22255              | 7194         | 13453              | 34                 | 0                | 1                    | 18                   | 0                          |
| <b>Free State</b>    | <b>55</b>            | <b>16696</b>       | <b>3296</b>  | <b>11470</b>       | <b>598</b>         | <b>73</b>        | <b>89</b>            | <b>321</b>           | <b>16</b>                  |
| Private              | 20                   | 7519               | 1196         | 5925               | 299                | 65               | 60                   | 137                  | 6                          |
| Public               | 35                   | 9177               | 2100         | 5545               | 299                | 8                | 29                   | 184                  | 10                         |
| <b>Gauteng</b>       | <b>130</b>           | <b>70986</b>       | <b>13763</b> | <b>53683</b>       | <b>1940</b>        | <b>481</b>       | <b>177</b>           | <b>493</b>           | <b>47</b>                  |
| Private              | 91                   | 39222              | 5989         | 31472              | 1441               | 453              | 148                  | 338                  | 39                         |
| Public               | 39                   | 31764              | 7774         | 22211              | 499                | 28               | 29                   | 155                  | 8                          |
| <b>KwaZulu-Natal</b> | <b>116</b>           | <b>49336</b>       | <b>11025</b> | <b>35571</b>       | <b>410</b>         | <b>62</b>        | <b>31</b>            | <b>111</b>           | <b>2</b>                   |
| Private              | 46                   | 27368              | 5108         | 21592              | 323                | 60               | 24                   | 79                   | 2                          |
| Public               | 70                   | 21968              | 5917         | 13979              | 87                 | 2                | 7                    | 32                   | 0                          |
| <b>Limpopo</b>       | <b>48</b>            | <b>9632</b>        | <b>2702</b>  | <b>6560</b>        | <b>60</b>          | <b>8</b>         | <b>6</b>             | <b>24</b>            | <b>0</b>                   |
| Private              | 7                    | 4545               | 993          | 3443               | 37                 | 8                | 6                    | 7                    | 0                          |
| Public               | 41                   | 5087               | 1709         | 3117               | 23                 | 0                | 0                    | 17                   | 0                          |
| <b>Mpumalanga</b>    | <b>40</b>            | <b>10588</b>       | <b>2546</b>  | <b>7554</b>        | <b>172</b>         | <b>43</b>        | <b>20</b>            | <b>98</b>            | <b>1</b>                   |
| Private              | 9                    | 5482               | 780          | 4536               | 108                | 40               | 15                   | 59                   | 1                          |
| Public               | 31                   | 5106               | 1766         | 3018               | 64                 | 3                | 5                    | 39                   | 0                          |
| <b>North West</b>    | <b>29</b>            | <b>15693</b>       | <b>1998</b>  | <b>11828</b>       | <b>499</b>         | <b>59</b>        | <b>38</b>            | <b>228</b>           | <b>19</b>                  |
| Private              | 12                   | 6496               | 782          | 5199               | 210                | 47               | 29                   | 95                   | 14                         |
| Public               | 17                   | 9197               | 1216         | 6629               | 289                | 12               | 9                    | 133                  | 5                          |
| <b>Northern Cape</b> | <b>25</b>            | <b>5160</b>        | <b>915</b>   | <b>3700</b>        | <b>290</b>         | <b>36</b>        | <b>47</b>            | <b>164</b>           | <b>5</b>                   |
| Private              | 8                    | 2959               | 410          | 2307               | 123                | 28               | 22                   | 62                   | 1                          |
| Public               | 17                   | 2201               | 505          | 1393               | 167                | 8                | 25                   | 102                  | 4                          |
| <b>Western Cape</b>  | <b>100</b>           | <b>59784</b>       | <b>10079</b> | <b>48741</b>       | <b>790</b>         | <b>111</b>       | <b>30</b>            | <b>97</b>            | <b>7</b>                   |
| Private              | 41                   | 20435              | 3318         | 16638              | 367                | 81               | 30                   | 97                   | 3                          |
| Public               | 59                   | 39349              | 6761         | 32103              | 423                | 30               |                      |                      | 4                          |
| <b>Total</b>         | <b>646</b>           | <b>269690</b>      | <b>55811</b> | <b>199725</b>      | <b>4856</b>        | <b>886</b>       | <b>442</b>           | <b>1567</b>          | <b>98</b>                  |



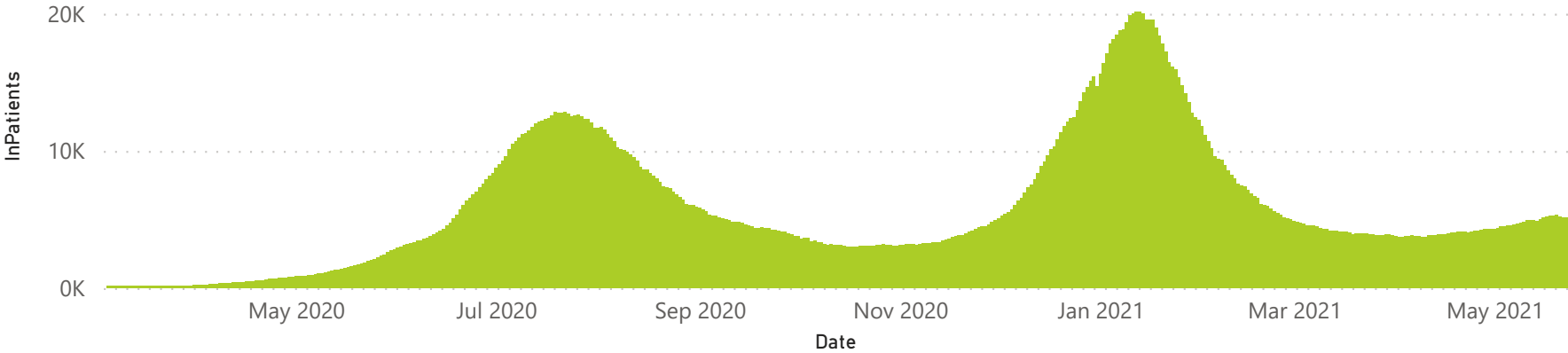
The number of reported admissions may change day-to-day as enrolled facilities back-capture historical data. The Western Cape government has been unable to provide daily data on patients who are on oxygen or ventilated. The data below refer to admitted patients with laboratory-confirmed COVID-19.



Summary of reported COVID-19 admissions by province, by sector

| Sector  | Facilities Reporting | Admissions to Date | Died to Date | Discharged to date | Currently Admitted | Currently in ICU | Currently Ventilated | Currently Oxygenated | Admissions in Previous Day |
|---------|----------------------|--------------------|--------------|--------------------|--------------------|------------------|----------------------|----------------------|----------------------------|
| Private | 252                  | 123586             | 20869        | 98277              | 2971               | 795              | 337                  | 887                  | 67                         |
| Public  | 394                  | 146104             | 34942        | 101448             | 1885               | 91               | 105                  | 680                  | 31                         |
| Total   | 646                  | 269690             | 55811        | 199725             | 4856               | 886              | 442                  | 1567                 | 98                         |

Daily current In-Patients over time



Sunday, 23 May 2021

## NICD COVID-19 Surveillance in Selected Hospitals

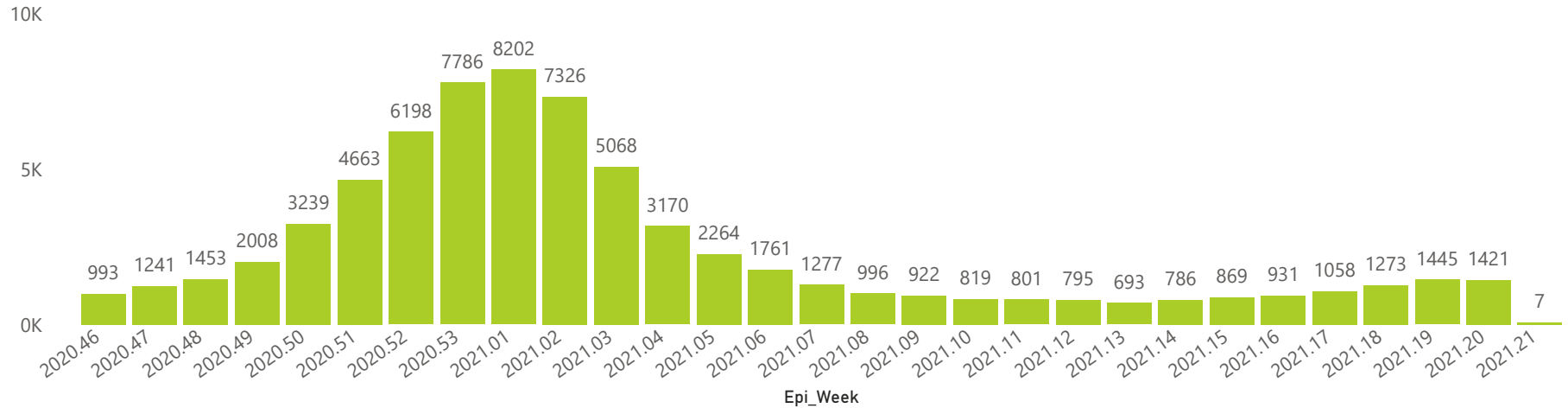
Private



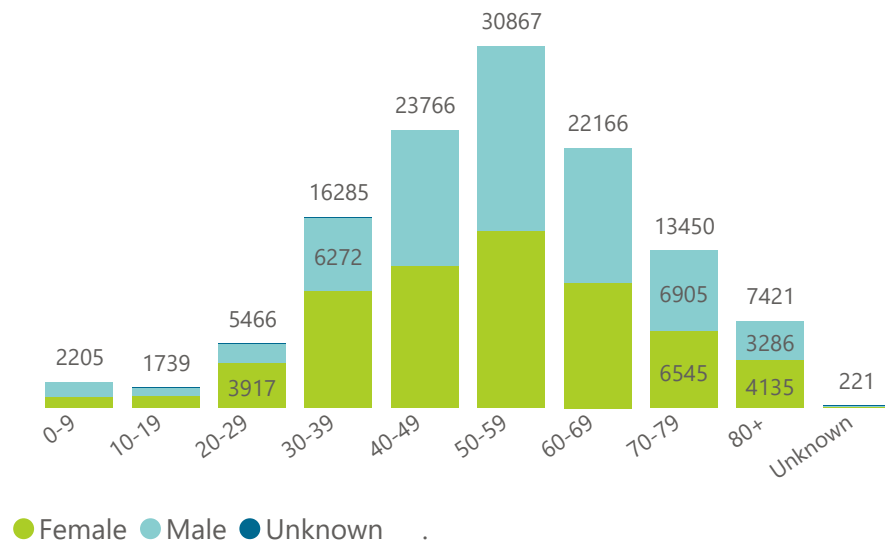
The number of reported admissions may change day-to-day as enrolled facilities back-capture historical data. There are some discharges and deaths that are in the process of being updated in Gauteng hospitals which will change the outcomes. The data below refer to admitted patients with laboratory-confirmed COVID-19.

NATIONAL INSTITUTE FOR  
COMMUNICABLE DISEASES  
Division of the National Health Laboratory Service

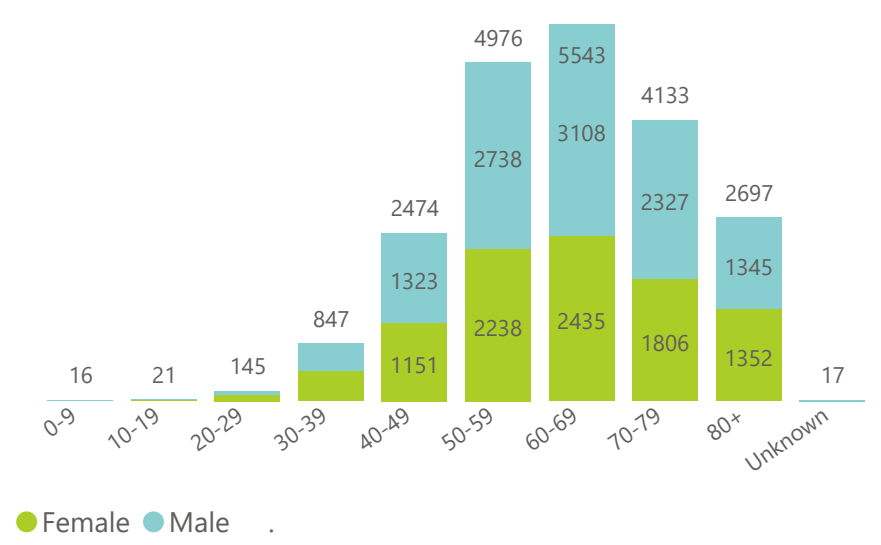
## Hospital admissions of COVID-19 cases, by epidemiological week



## Admissions to date by age group and sex



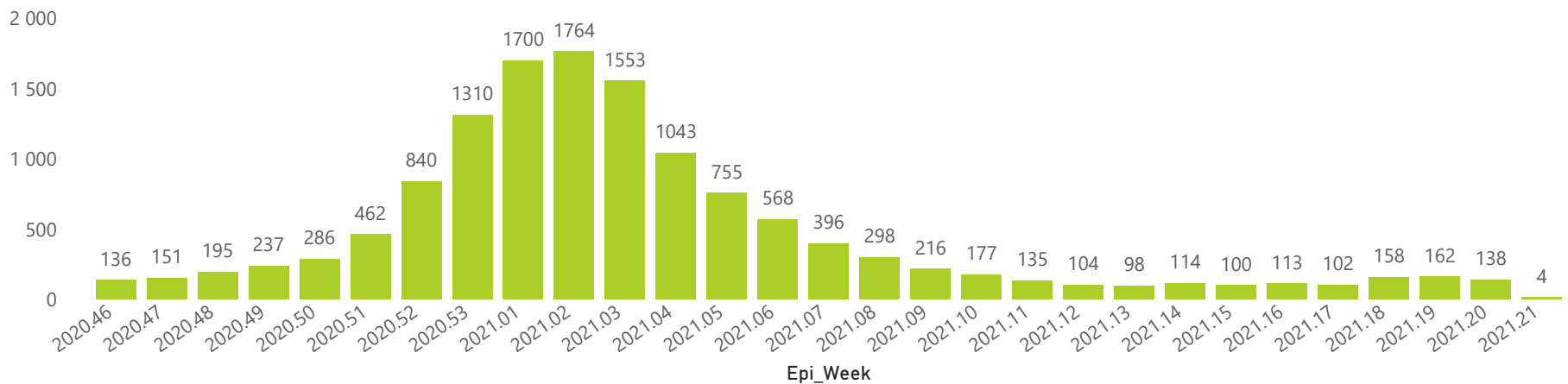
## Deaths to date by age group and sex



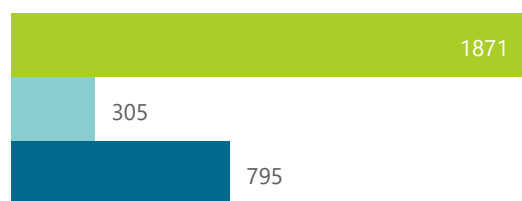
● Female ● Male ● Unknown

● Female ● Male

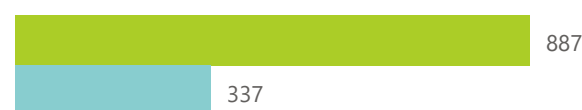
## Deaths by epidemiological week



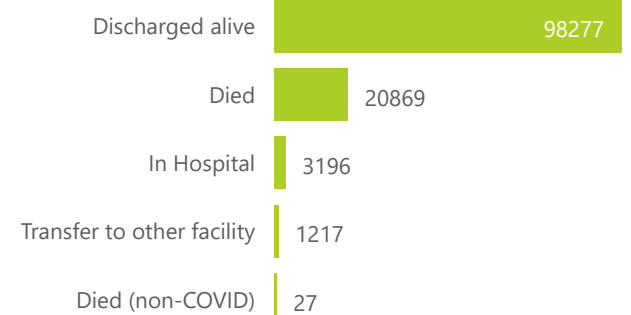
## Ward of currently admitted patients



## Interventions for currently admitted patients



## Admissions to date by discharge type



● General Ward ● High Care ● Intensive Care Unit

● Currently Oxygenated ● Currently Ventilated

The number of reported admissions may change day-to-day as enrolled facilities back-capture historical data. The Western Cape government has been unable to provide daily data on patients who are on oxygen or ventilated. The data below refer to admitted patients with laboratory-confirmed COVID-19.

## Summary of reported COVID-19 admissions by province

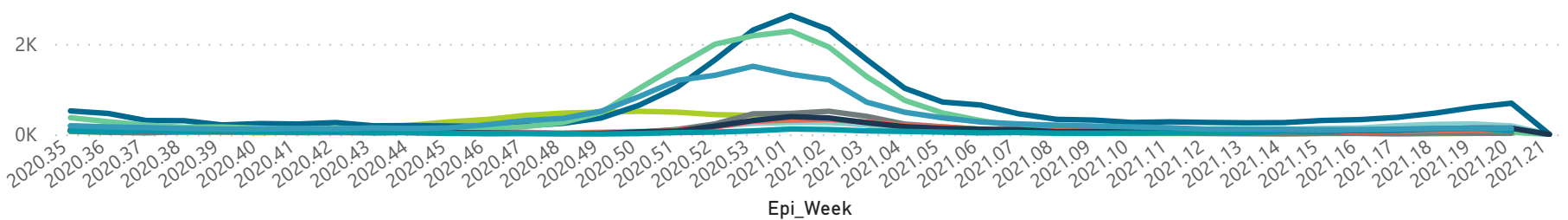
| Province      | Facilities Reporting | Admissions to Date | Died to Date | Discharged to date | Currently Admitted | Currently in ICU | Currently Ventilated | Currently Oxygenated | Admissions in Previous Day |
|---------------|----------------------|--------------------|--------------|--------------------|--------------------|------------------|----------------------|----------------------|----------------------------|
| Eastern Cape  | 18                   | 9560               | 2293         | 7165               | 63                 | 13               | 3                    | 13                   | 1                          |
| Free State    | 20                   | 7519               | 1196         | 5925               | 299                | 65               | 60                   | 137                  | 6                          |
| Gauteng       | 91                   | 39222              | 5989         | 31472              | 1441               | 453              | 148                  | 338                  | 39                         |
| KwaZulu-Natal | 46                   | 27368              | 5108         | 21592              | 323                | 60               | 24                   | 79                   | 2                          |
| Limpopo       | 7                    | 4545               | 993          | 3443               | 37                 | 8                | 6                    | 7                    | 0                          |
| Mpumalanga    | 9                    | 5482               | 780          | 4536               | 108                | 40               | 15                   | 59                   | 1                          |
| North West    | 12                   | 6496               | 782          | 5199               | 210                | 47               | 29                   | 95                   | 14                         |
| Northern Cape | 8                    | 2959               | 410          | 2307               | 123                | 28               | 22                   | 62                   | 1                          |
| Western Cape  | 41                   | 20435              | 3318         | 16638              | 367                | 81               | 30                   | 97                   | 3                          |
| <b>Total</b>  | <b>252</b>           | <b>123586</b>      | <b>20869</b> | <b>98277</b>       | <b>2971</b>        | <b>795</b>       | <b>337</b>           | <b>887</b>           | <b>67</b>                  |

## Summary of reported COVID-19 admissions by hospital group

| Hospital_Group  | Facilities Reporting | Admissions to Date | Died to Date | Discharged to date | Currently Admitted | Currently in ICU | Currently Ventilated | Currently Oxygenated | Admissions in Previous Day |
|-----------------|----------------------|--------------------|--------------|--------------------|--------------------|------------------|----------------------|----------------------|----------------------------|
| NHN             | 69                   | 14516              | 2177         | 11184              | 278                | 34               | 32                   | 165                  | 9                          |
| Netcare         | 59                   | 33731              | 6566         | 26103              | 867                | 273              | 67                   | 7                    | 37                         |
| Life Healthcare | 50                   | 27659              | 4583         | 22570              | 471                | 168              | 40                   | 265                  | 10                         |
| Mediclinic      | 48                   | 32559              | 5417         | 26357              | 675                | 187              | 126                  | 353                  | 11                         |
| Lenmed          | 10                   | 6758               | 830          | 5453               | 310                | 63               | 32                   | 51                   | 0                          |
| Clinix          | 6                    | 1489               | 178          | 1116               | 161                | 38               | 27                   | 11                   | 0                          |
| JMH             | 5                    | 1853               | 324          | 1468               | 32                 | 0                | 0                    | 8                    | 0                          |
| Melomed         | 5                    | 5021               | 794          | 4026               | 177                | 32               | 13                   | 27                   | 0                          |
| <b>Total</b>    | <b>252</b>           | <b>123586</b>      | <b>20869</b> | <b>98277</b>       | <b>2971</b>        | <b>795</b>       | <b>337</b>           | <b>887</b>           | <b>67</b>                  |

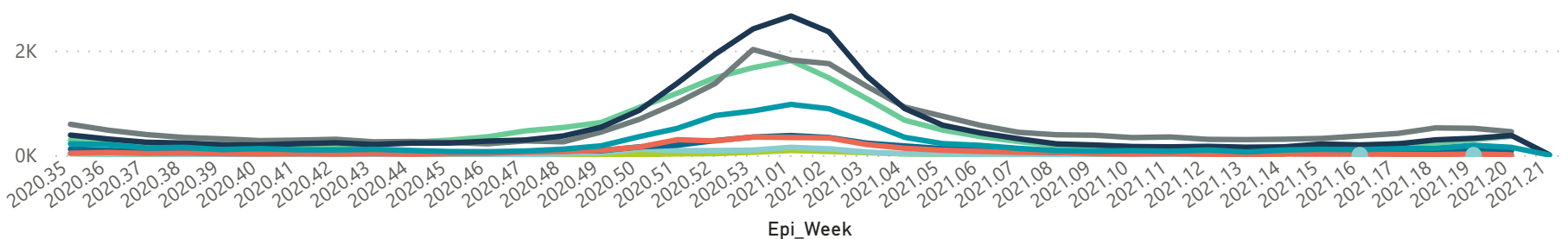
## Hospital admissions by province

Province ● Eastern Cape ● Free State ● Gauteng ● KwaZulu-Natal ● Limpopo ● Mpumalanga ● North West ● Northern Cape ● Western Cape



## Hospital admissions by hospital group

Group ● Clinix ● JMH ● Lenmed ● Life Healthcare ● Mediclinic ● Melomed ● Netcare ● NHN



## Admissions by hospital group

## Deaths by hospital group

