

PRIVATE CONSULTATIONS SURVEILLANCE EPIDEMIC THRESHOLD REPORT

SOUTH AFRICA WEEK 5 2022



NATIONAL INSTITUTE FOR
COMMUNICABLE DISEASES

Division of the National Health Laboratory Service

CONTENTS

Surveillance programme description and comments	2
Data from virologic surveillance to aid interpretation	3-4
• Influenza detections per week	
• Respiratory syncytial virus (RSV) detections per week	
• SARS-CoV-2 detections per week	
Number of consultations per week	5-6
Private consultation thresholds by age group: All Ages	7
<5 years	8
5-19 years	9
20-49 years	10
≥50 years	11
Private consultation thresholds by province: Eastern Cape	12
Gauteng	13
KwaZulu-Natal	14
Western Cape	15

HIGHLIGHTS: WEEK 5

- Total COVID-19 and respiratory admissions increased since the start of the fourth COVID-19 wave from week 45 of 2021, peaking in week 49 of 2021. However recently the numbers have been decreasing in all groups and provinces to below threshold. The proportion of admissions coded as confirmed COVID-19 (among the suspected cases) peaked in the fourth wave in weeks 49 to 52 of 2021 at 95%. It has since decreased to 71%.
- Total COVID-19 and respiratory outpatient (general practitioner) consultations peaked in week 49 of 2021 in the fourth COVID-19 wave. Recently the number of consultations has been rising slightly in most age groups (0-49 years) and in Gauteng but remaining below threshold. The proportion of general practitioner consultations coded as confirmed COVID-19 (among the suspected cases) peaked in week 2 of 2022 at 42% in the fourth wave and has remained at similar levels in recent weeks, even though absolute numbers have been decreasing.
- Total COVID-19 and respiratory emergency department consultations peaked in weeks 49 of 2021 in the fourth COVID-19 wave. In the past few weeks, numbers have been slightly increasing in age groups 0-19 years and all provinces except for Gauteng. However, these numbers are still below threshold. The proportion of general practitioner consultations coded as confirmed COVID-19 (among the suspected cases) peaked in weeks 50 and 51 of 2021 at 99% for the fourth wave. The current proportion remains high at 95.1%.

PRIVATE CONSULTATIONS SURVEILLANCE EPIDEMIC THRESHOLD REPORT

WEEK 5 2022

PROGRAMME DESCRIPTIONS

Inpatient data from a large national private hospital group and outpatient data from a general practitioner network linked to the same hospital group were received for the last week. Data were obtained from eight provinces (Eastern Cape, Free State, Gauteng, Limpopo, KwaZulu-Natal, Mpumalanga, North West, Western Cape). Sufficient numbers for province-level reporting were available for four of these (bold). Consultations and admissions were coded based on discharge diagnosis using the International Classification of Diseases and Related Health Problems, 10th revision (ICD-10). Data were analysed using the indicator: All respiratory and confirmed or suspected COVID-19 (J00-J99 & U07.1 & U07.2)/Total consultations. Data on the indicator Pneumonia and Influenza (J10-J18)/Total consultations are available on request but were not included in this report.

Data were categorised in the following age groups: All ages, <5 years, 5-19 years, 20-49 years, ≥50 years

Epidemic Threshold

Thresholds were calculated using the Moving Epidemic Method (MEM), a sequential analysis using the R Language, available from: <http://CRAN.R-project.org/web/package=mem>, designed to calculate the duration, start and end of the annual influenza epidemic. MEM uses the 40th, 90th and 97.5th percentiles established from historical data (2015-2019 for inpatients, 2016-2019 for outpatients) to calculate thresholds of activity, defined as follows:

- Epidemic threshold: Median of weekly values for all baseline years
- Low activity: Between epidemic threshold including 40th percentile
- Moderate activity: Between 40th and 90th percentile
- High activity: Between 90th and 97.5th percentile
- Very high activity: 97.5th percentile and above

Hospitalization data for recent weeks are adjusted for delayed reporting (diagnosis codes assigned on discharge delayed for prolonged hospitalisations). Adjustment accounts for the probability of being admitted, but not yet discharged at the time of data drawdown using the age- and syndrome-specific probability distribution of duration of admission obtained from all hospitalizations that occurred during 2015-2019 and applied to weeks reported.

Limitations

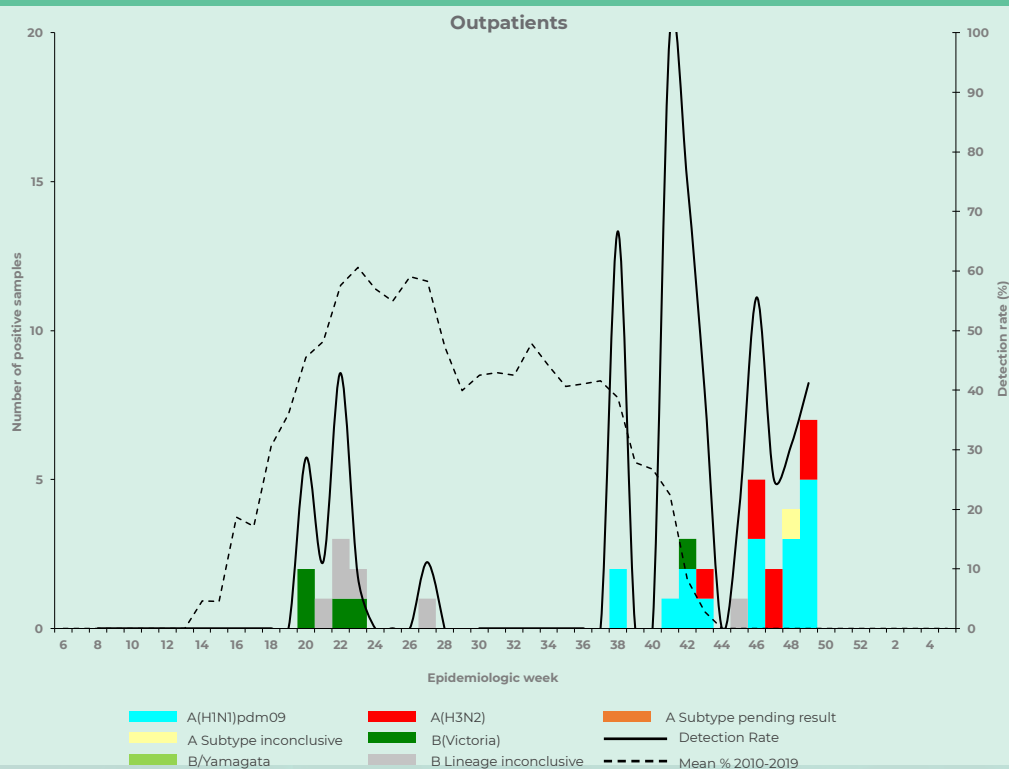
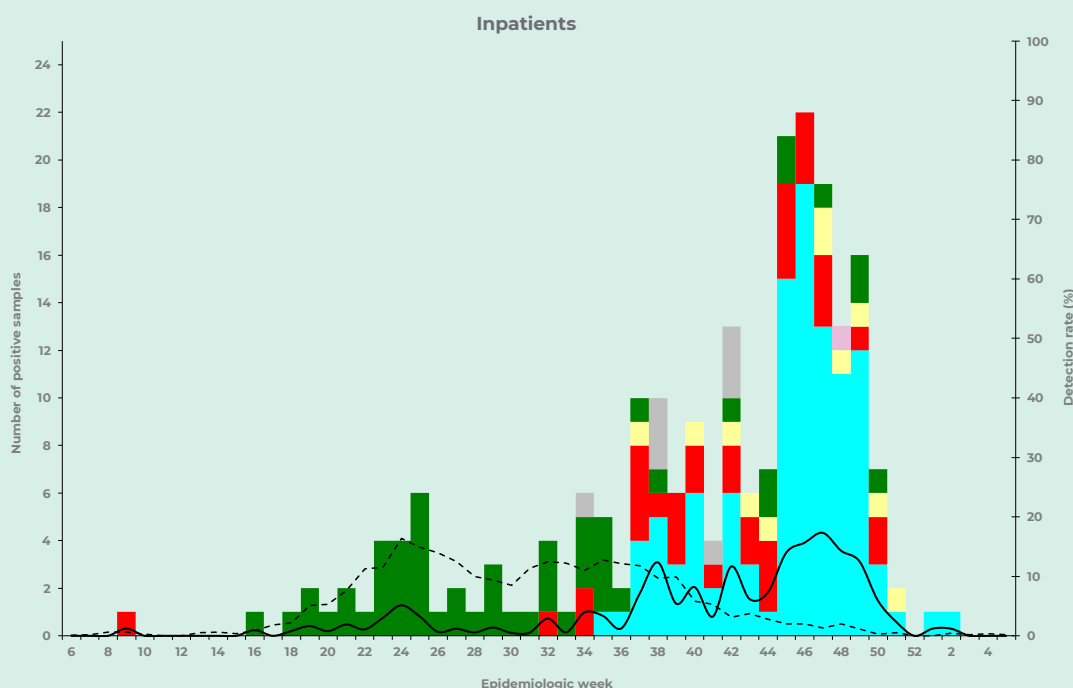
Thresholds are established based on the proportion of respiratory consultations. If the numbers of non-respiratory consultations drop substantially because of changes in health-seeking behaviour, this could lead to elevated respiratory proportions. Delays in the coding of consultations may lead to changes in data from previous weeks. Differences by province and age group should be interpreted with caution due to low numbers in some groups.

PRIVATE CONSULTATIONS SURVEILLANCE EPIDEMIC THRESHOLD REPORT

WEEK 5 2022

DATA FROM VIROLOGIC SURVEILLANCE PROGRAMMES TO AID IN INTERPRETATION OF CONSULTATION TRENDS

Number of influenza positive samples by subtype/lineage and detection rate by week

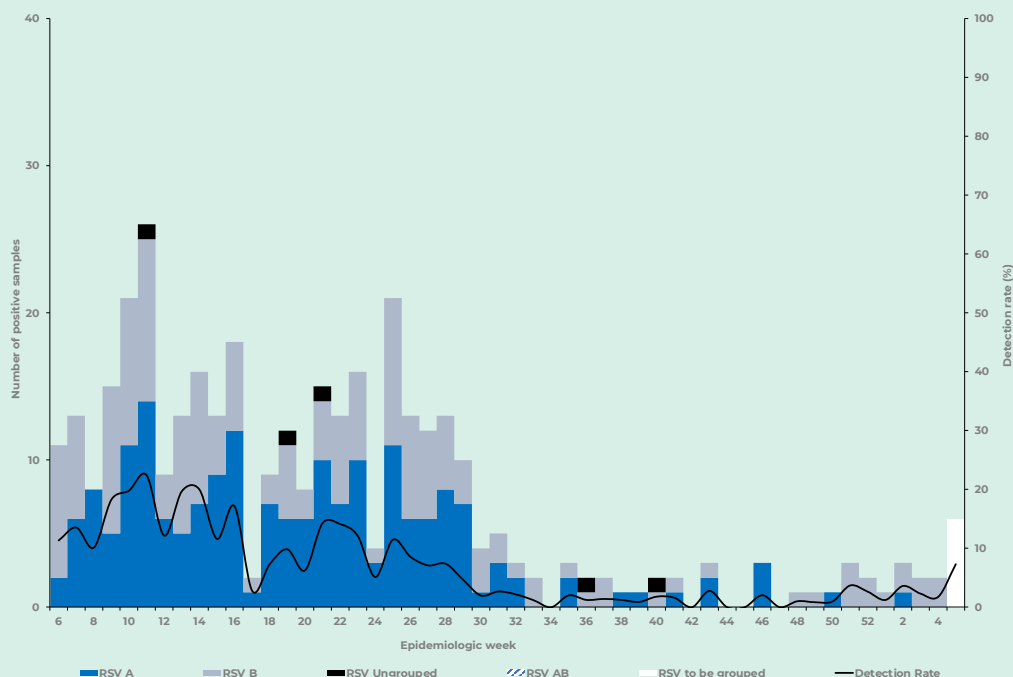


PRIVATE CONSULTATIONS SURVEILLANCE EPIDEMIC THRESHOLD REPORT

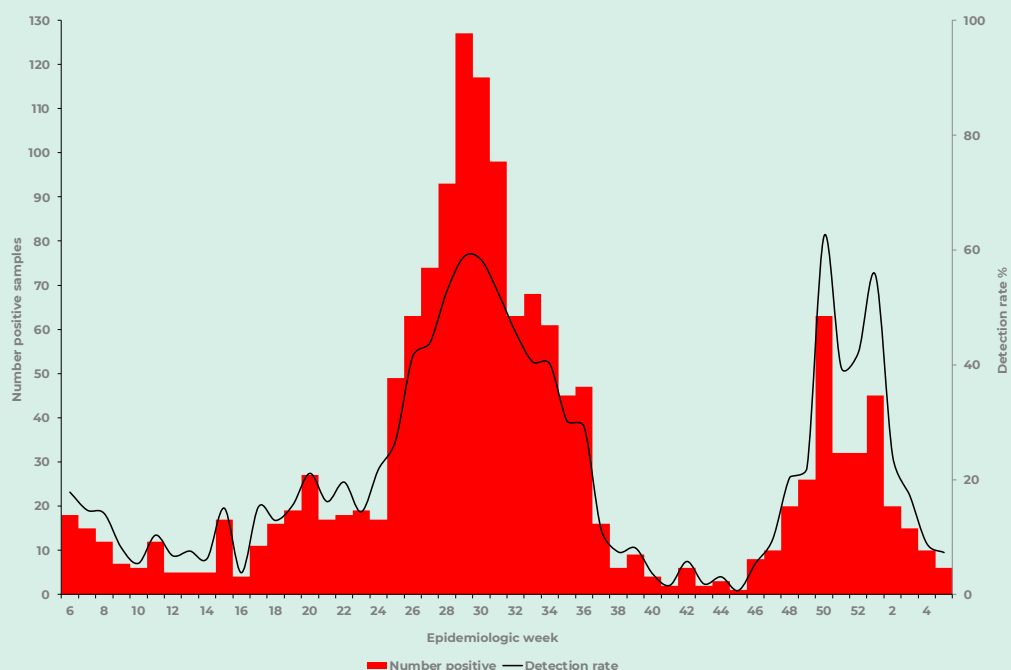
WEEK 5 2022

DATA FROM VIROLOGIC SURVEILLANCE PROGRAMMES TO AID IN INTERPRETATION OF CONSULTATION TRENDS

Number of respiratory syncytial virus positive by groups and subgroups per week (inpatients) and detection rate per week (inpatients)



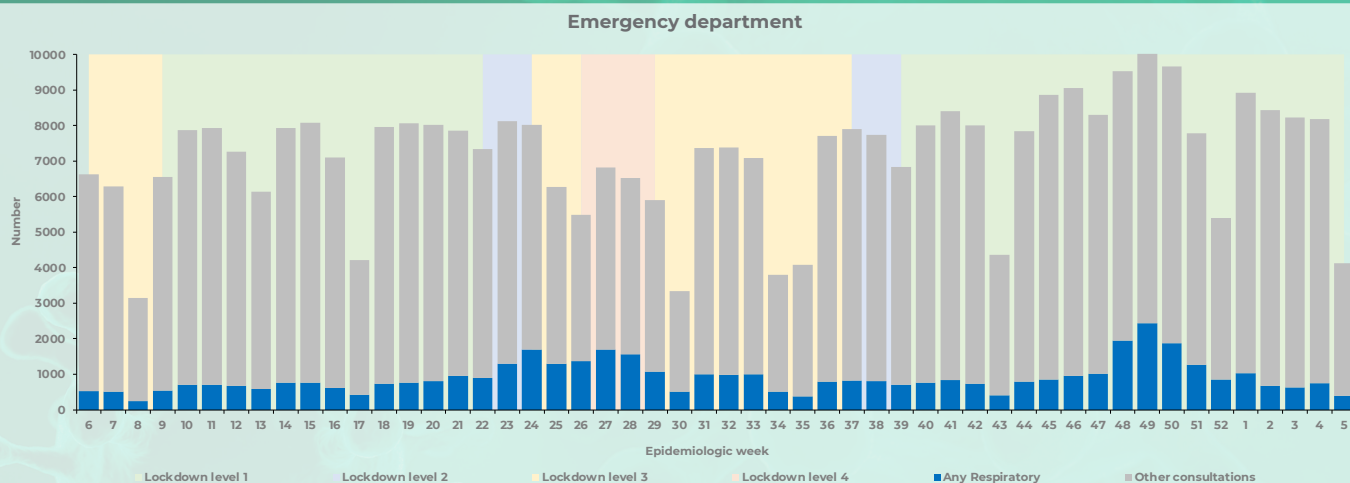
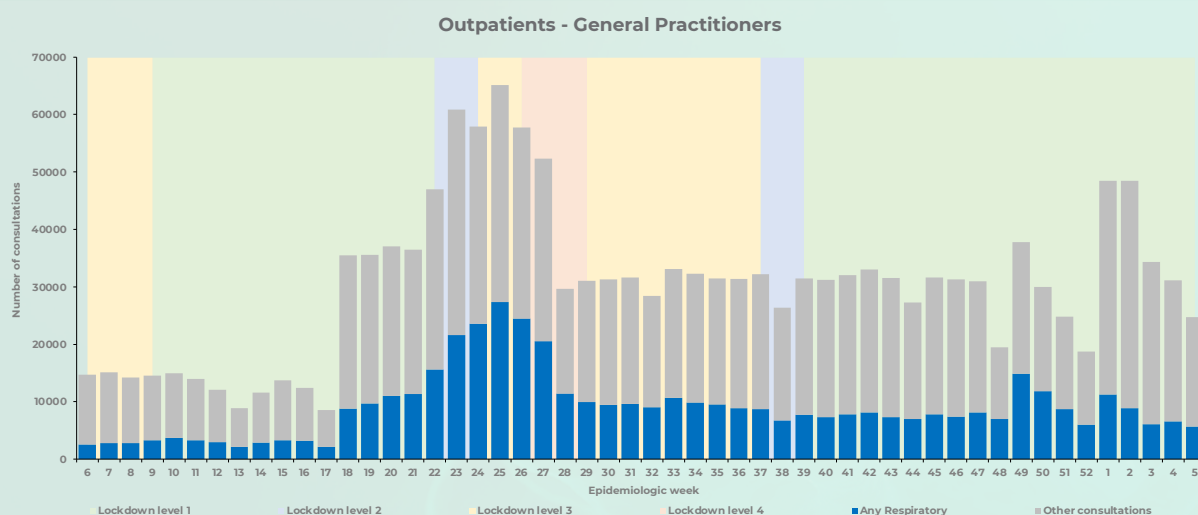
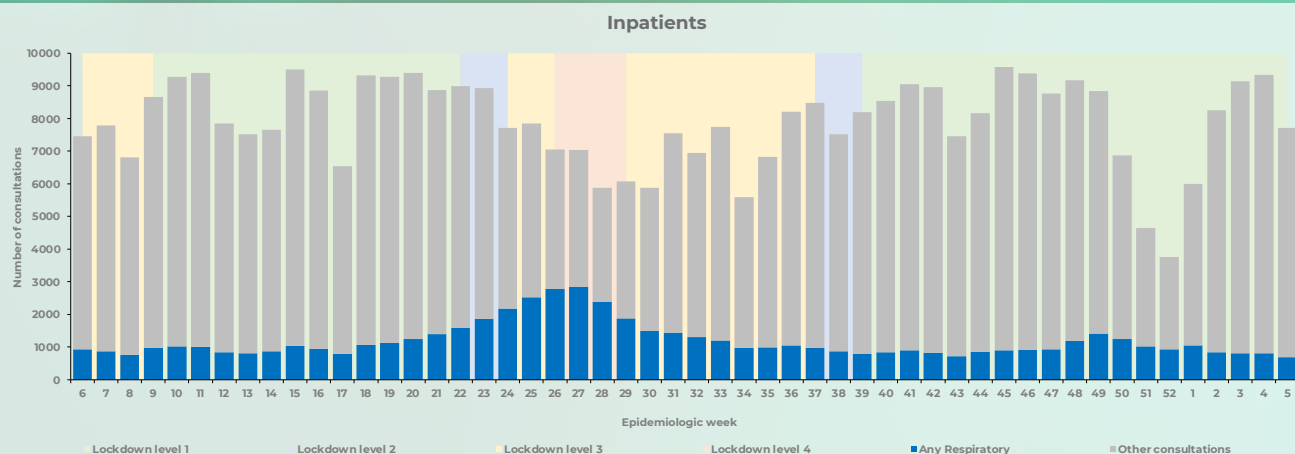
Number of SARS-COV-2 positive and detection rate per week (inpatients)



PRIVATE CONSULTATIONS SURVEILLANCE EPIDEMIC THRESHOLD REPORT

WEEK 5 2022

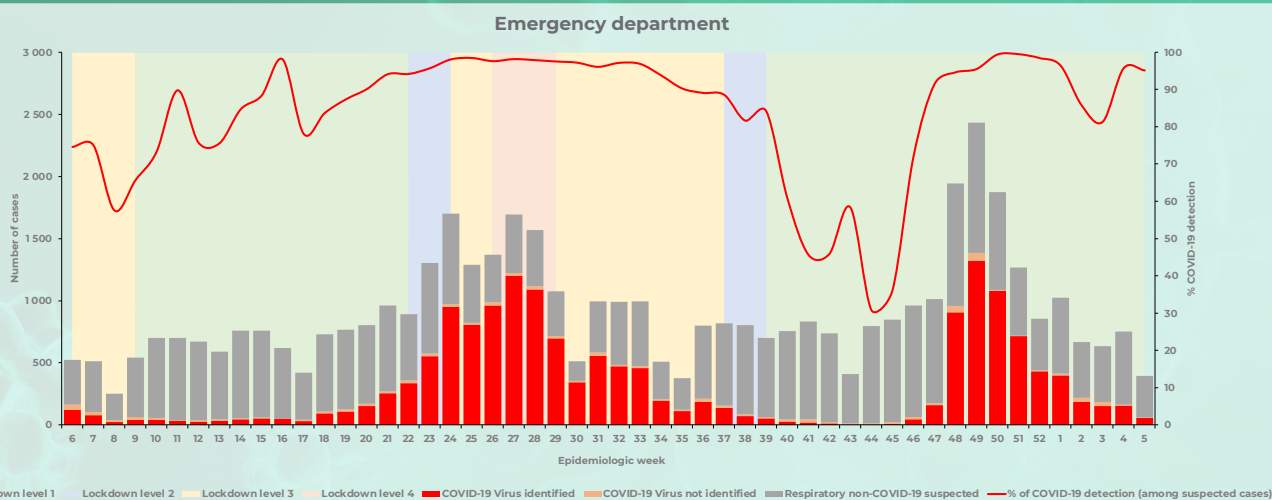
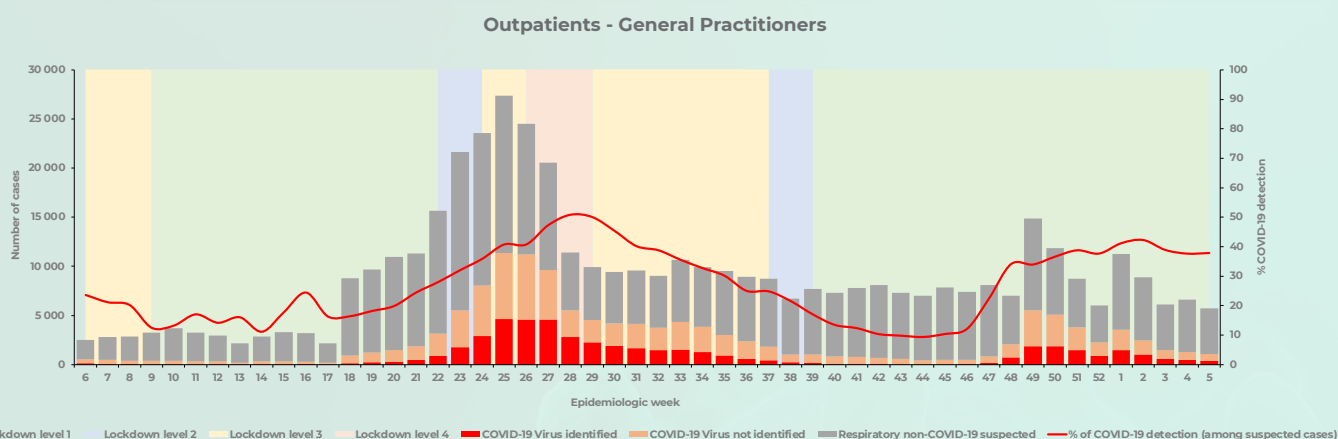
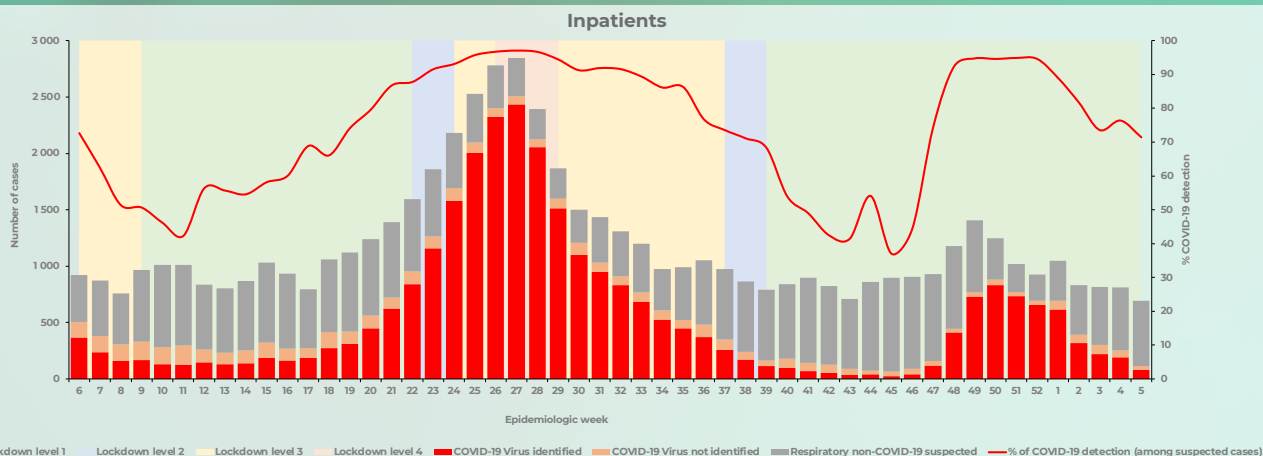
Number of consultations - all respiratory including confirmed or suspected COVID-19 and other consultations by week



PRIVATE CONSULTATIONS SURVEILLANCE EPIDEMIC THRESHOLD REPORT

WEEK 5 2022

Number of consultations - all respiratory including confirmed or suspected COVID-19 and other consultations by week

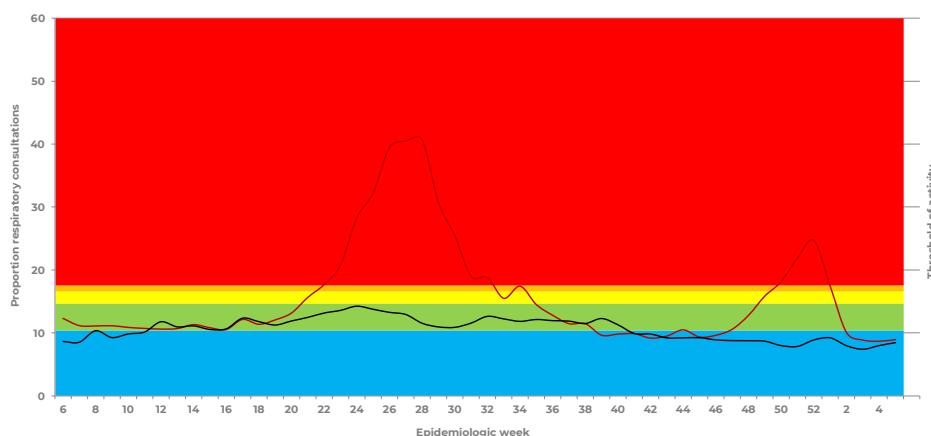


PRIVATE CONSULTATIONS SURVEILLANCE EPIDEMIC THRESHOLD REPORT

WEEK 5 2022

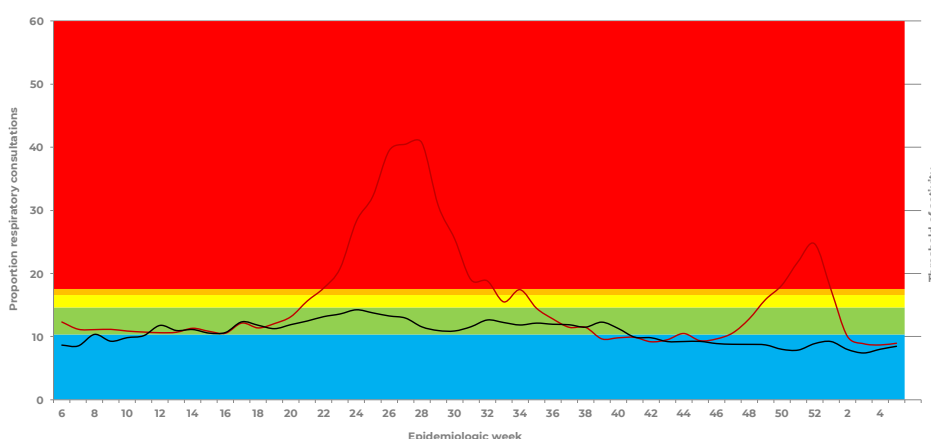
ALL AGES

All Respiratory including confirmed or suspected COVID-19 (J00-J99 & U07) indicators - Inpatients

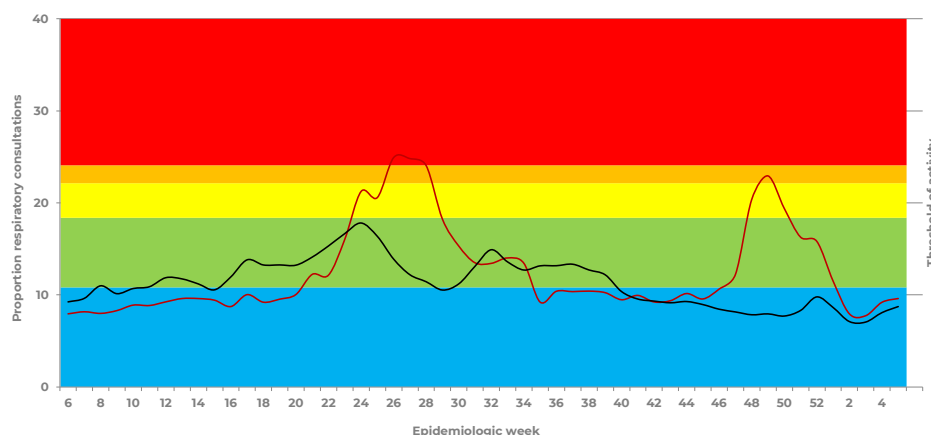


All Respiratory including confirmed or suspected COVID-19 (J00-J99 & U07) indicators - Outpatients

General Practitioners



Emergency Department



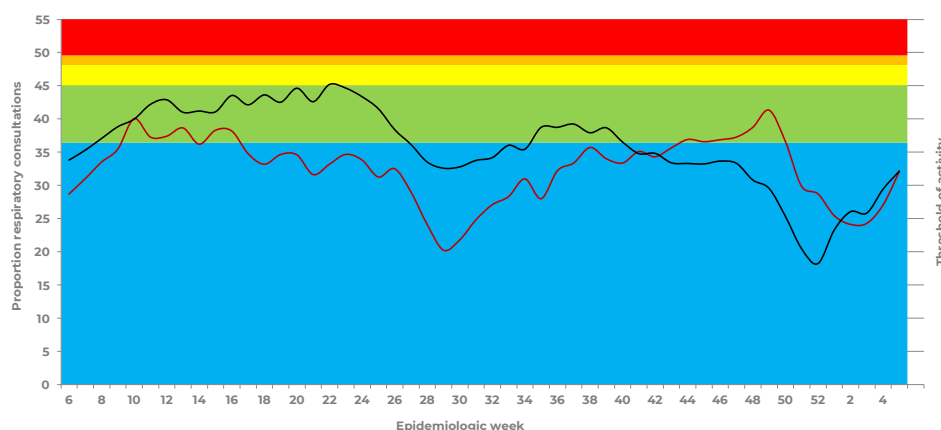
■ Below threshold
 ■ Low
 ■ Moderate
 ■ High
 ■ Very High
— % All Respiratory
— Mean % 2015-2019 (Inpatients/Casualty) 2016-2019 (General Practitioner)

PRIVATE CONSULTATIONS SURVEILLANCE EPIDEMIC THRESHOLD REPORT

WEEK 5 2022

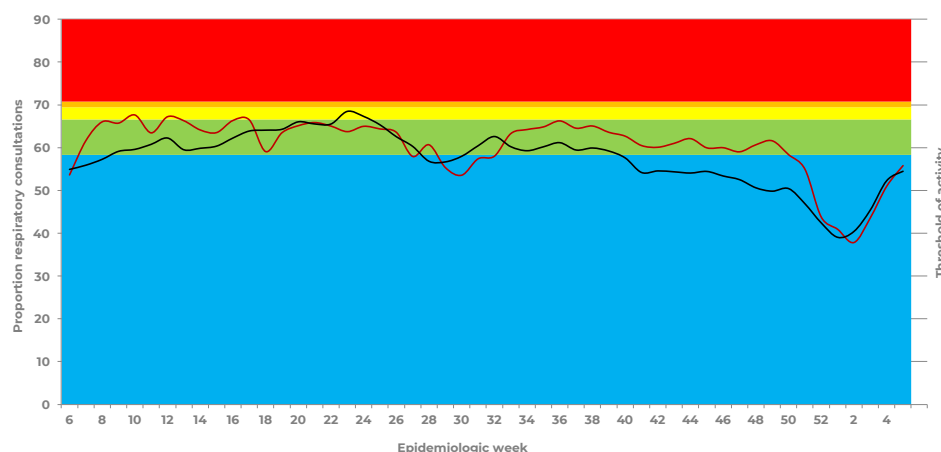
0-4 YEARS OF AGE

All Respiratory including confirmed or suspected COVID-19 (J00-J99 & U07) indicators – Inpatients

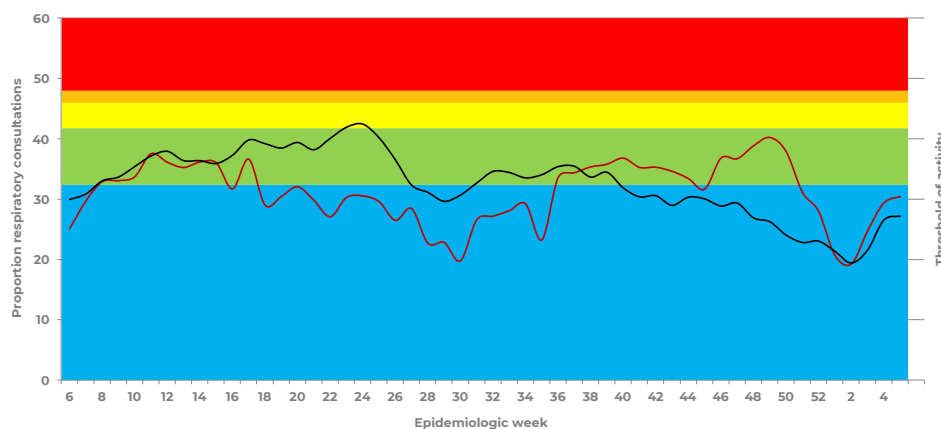


All Respiratory including confirmed or suspected COVID-19 (J00-J99 & U07) indicators – Outpatients

General Practitioners



Emergency Department



Below threshold
 Low
 Moderate
 High
 Very High

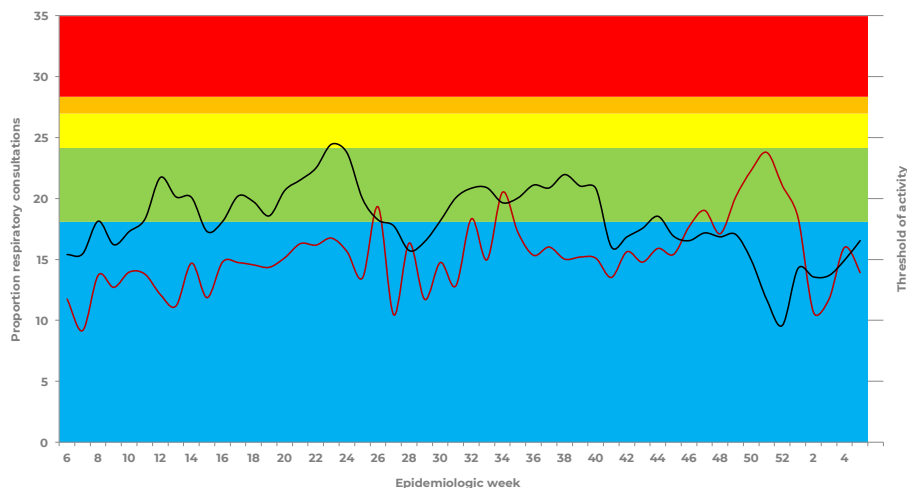
— % All Respiratory
 — Mean % 2015-2019 (Inpatients/Casualty) 2016-2019 (General Practitioner)

PRIVATE CONSULTATIONS SURVEILLANCE EPIDEMIC THRESHOLD REPORT

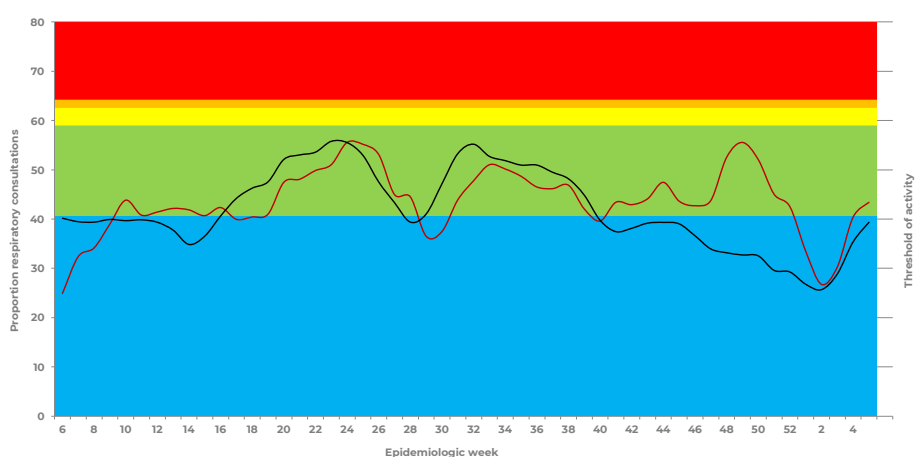
WEEK 5 2022

5-19 YEARS OF AGE

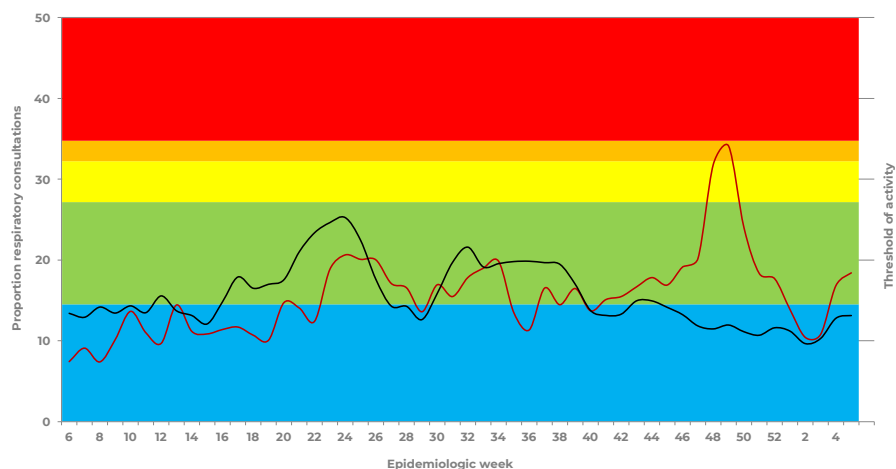
All Respiratory including confirmed or suspected COVID-19 (J00-J99 & U07) indicators – Inpatients



All Respiratory including confirmed or suspected COVID-19 (J00-J99 & U07) indicators – Outpatients
General Practitioners



Emergency Department



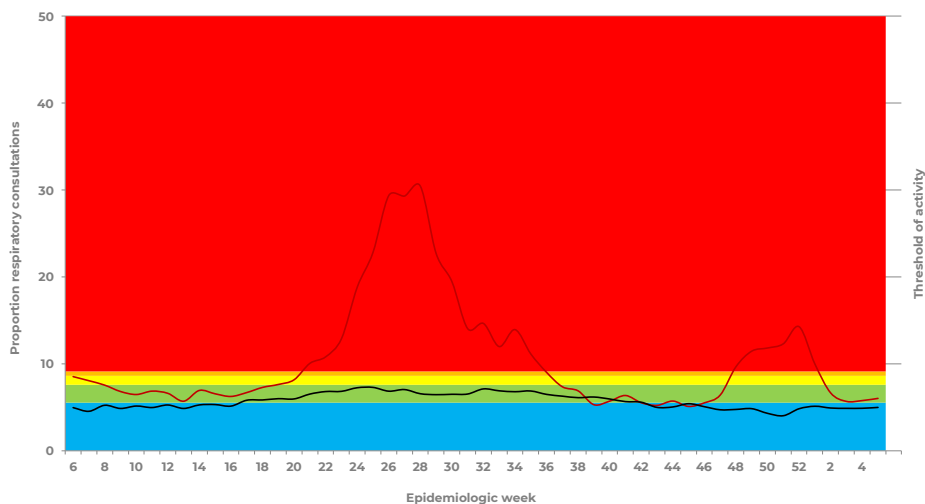
■ Below threshold
 ■ Low
 ■ Moderate
 ■ High
 ■ Very High
— % All Respiratory
— Mean % 2015- 2019 (Inpatients/Casualty) 2016-2019 (General Practitioner)

PRIVATE CONSULTATIONS SURVEILLANCE EPIDEMIC THRESHOLD REPORT

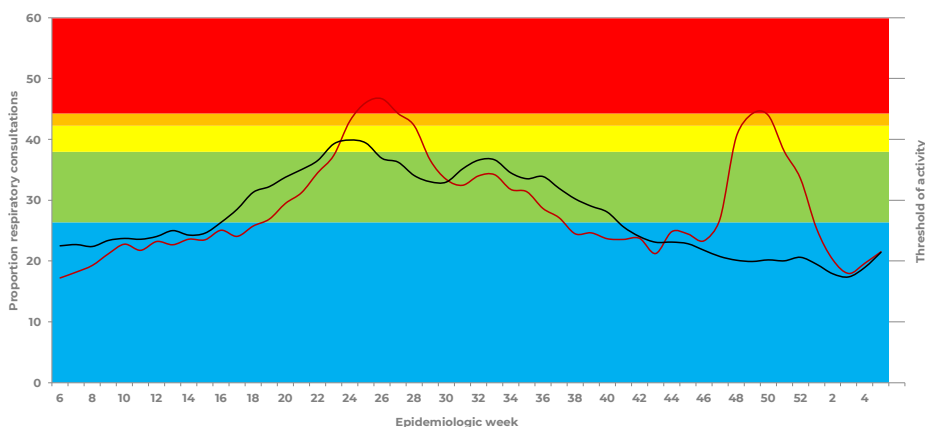
WEEK 5 2022

20-49 YEARS OF AGE

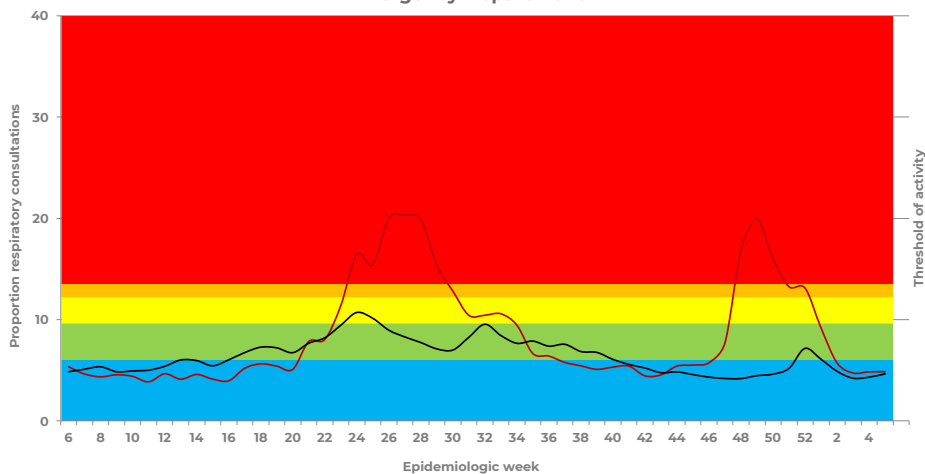
All Respiratory including confirmed or suspected COVID-19 (J00-J99 & U07) indicators – Inpatients



All Respiratory including confirmed or suspected COVID-19 (J00-J99 & U07) indicators – Outpatients
General Practitioners



Emergency Department



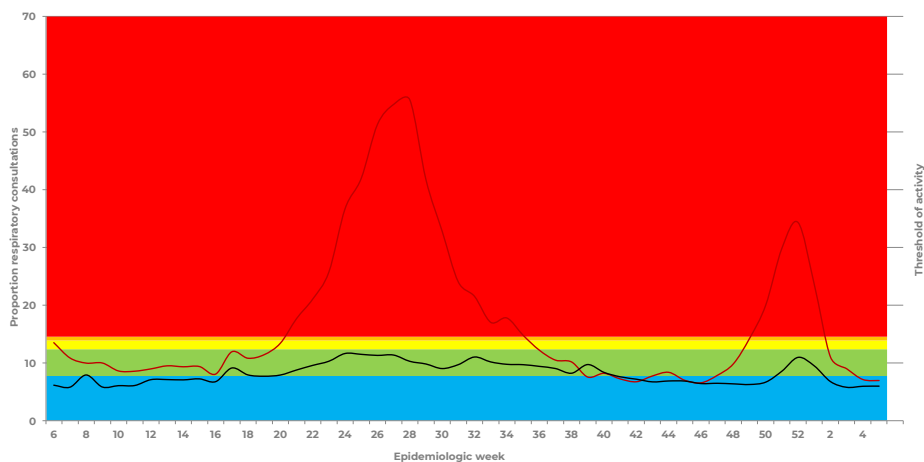
■ Below threshold
 ■ Low
 ■ Moderate
 ■ High
 ■ Very High
— % All Respiratory
— Mean % 2015- 2019 (Inpatients/Casualty) 2016-2019 (General Practitioner)

PRIVATE CONSULTATIONS SURVEILLANCE EPIDEMIC THRESHOLD REPORT

WEEK 5 2022

≥50 YEARS OF AGE

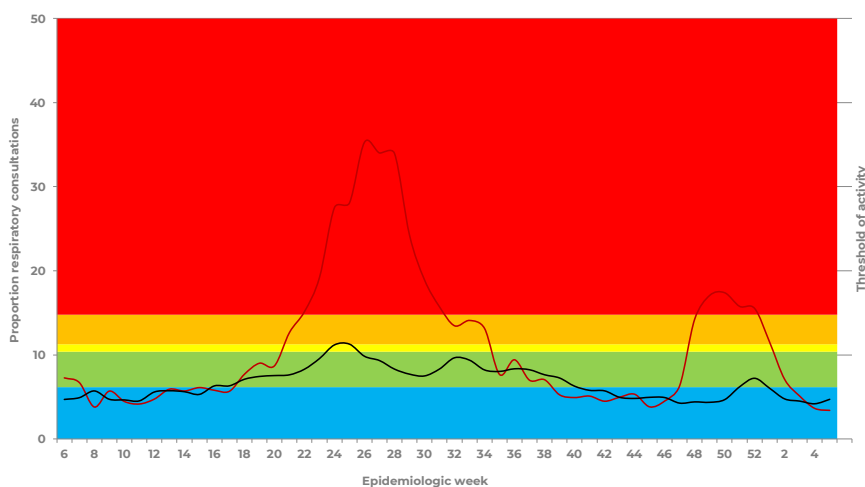
All Respiratory including confirmed or suspected COVID-19 (J00-J99 & U07) indicators – Inpatients



All Respiratory including confirmed or suspected COVID-19 (J00-J99 & U07) indicators – Outpatients
General Practitioners



Emergency Department



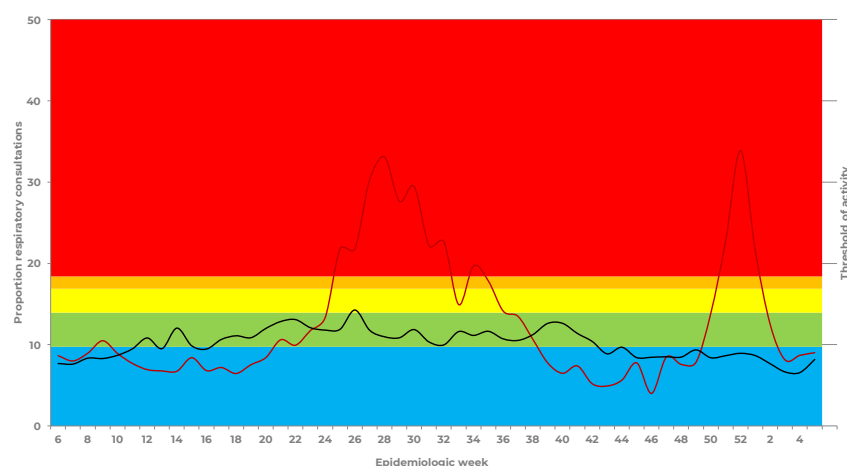
Below threshold Low Moderate High Very High
— % All Respiratory — Mean % 2015- 2019 (Inpatients/Casualty) 2016-2019 (General Practitioner)

PRIVATE CONSULTATIONS SURVEILLANCE EPIDEMIC THRESHOLD REPORT

WEEK 5 2022

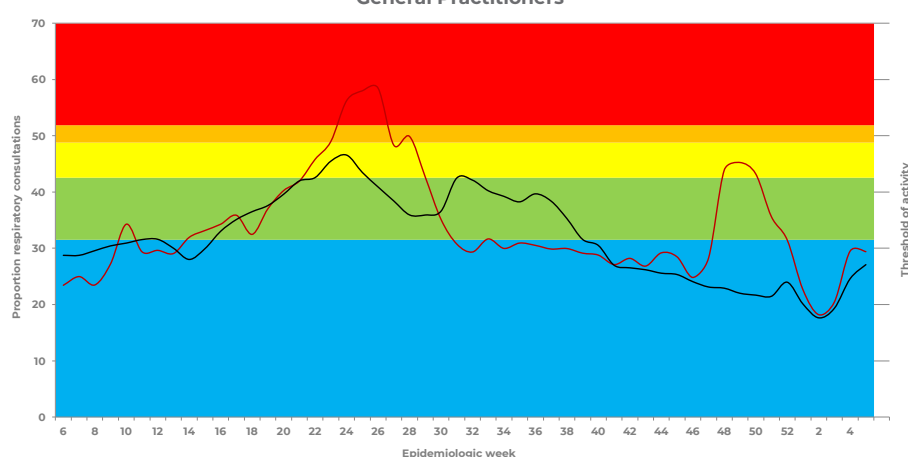
EASTERN CAPE PROVINCE

All Respiratory including confirmed or suspected COVID-19 (J00-J99 & U07) indicators – Inpatients

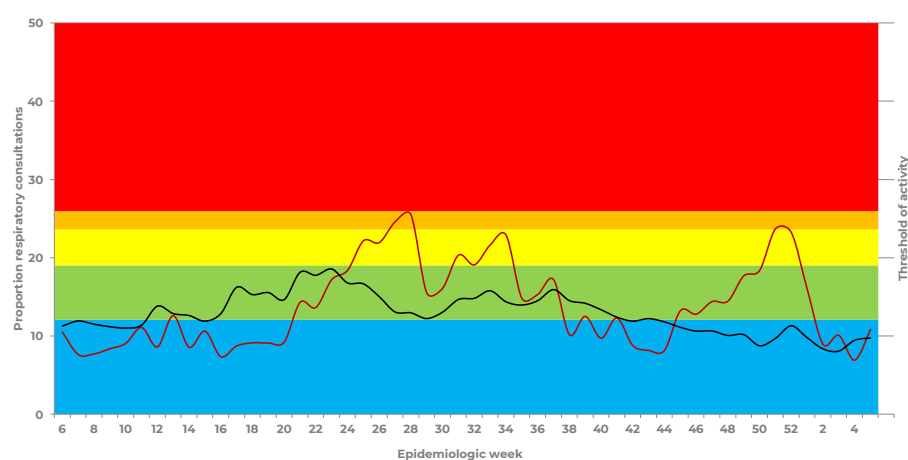


All Respiratory including confirmed or suspected COVID-19 (J00-J99 & U07) indicators – Outpatients

General Practitioners



Emergency Department



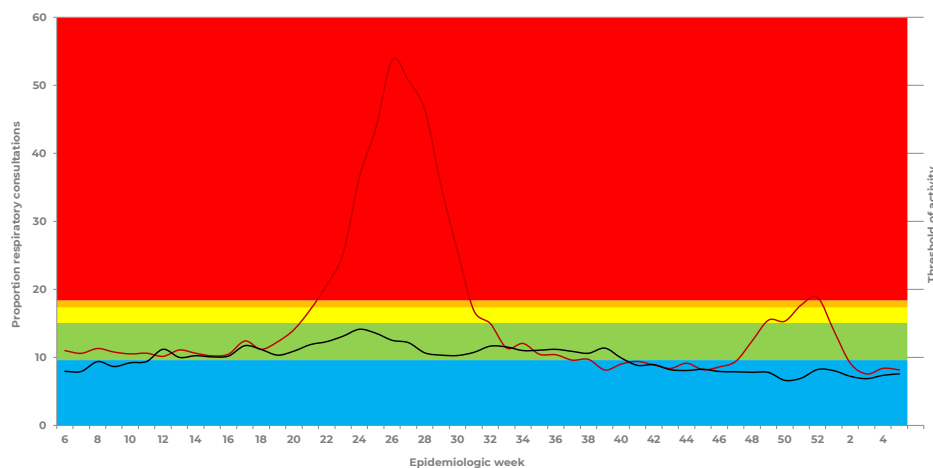
Below threshold Low Moderate High Very High
 — % All Respiratory — Mean % 2015- 2019 (Inpatients/Casualty) 2016-2019 (General Practitioner)

PRIVATE CONSULTATIONS SURVEILLANCE EPIDEMIC THRESHOLD REPORT

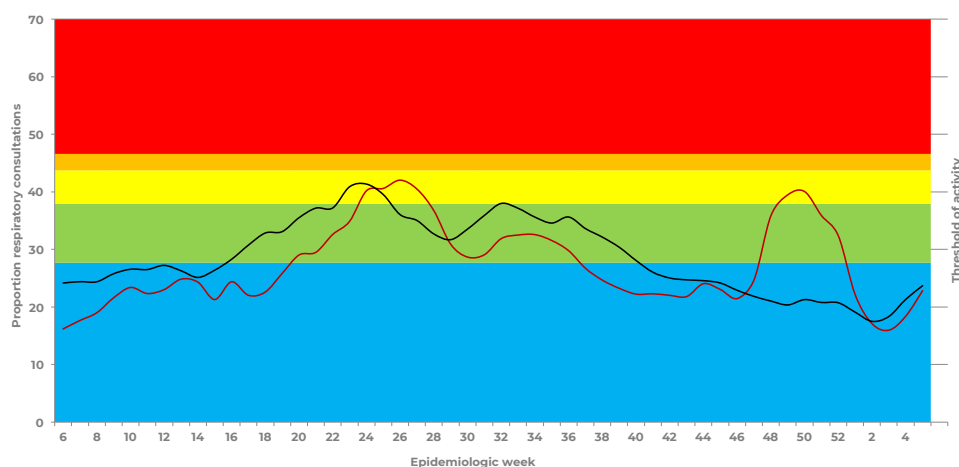
WEEK 5 2022

GAUTENG

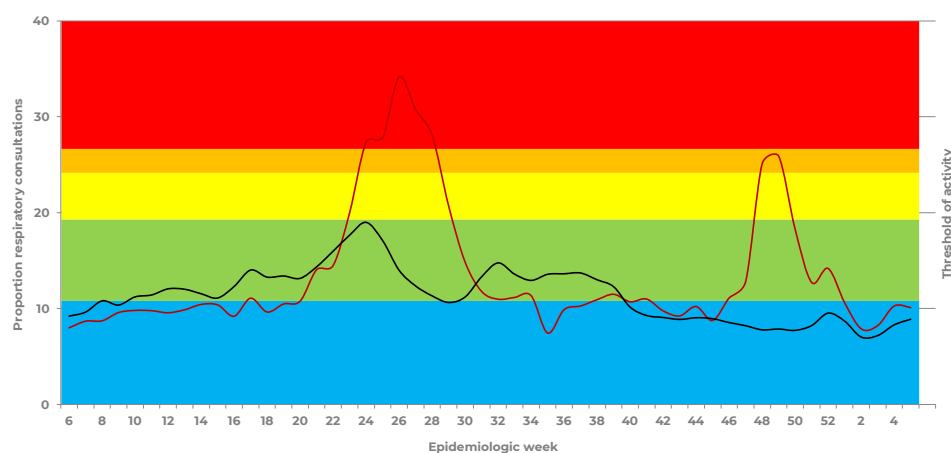
All Respiratory including confirmed or suspected COVID-19 (J00-J99 & U07) indicators – Inpatients



All Respiratory including confirmed or suspected COVID-19 (J00-J99 & U07) indicators – Outpatients
General Practitioners



Emergency Department



Below threshold
 Low
 Moderate
 High
 Very High

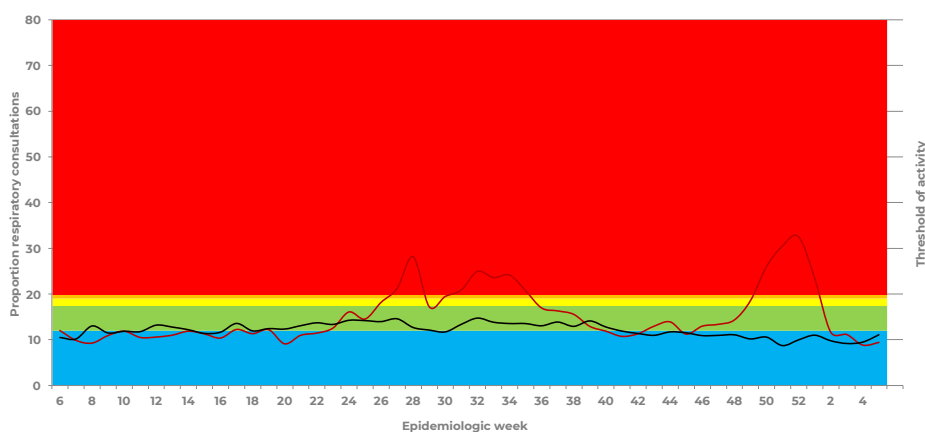
— % All Respiratory
 — Mean % 2015- 2019 (Inpatients/Casualty) 2016-2019 (General Practitioner)

PRIVATE CONSULTATIONS SURVEILLANCE EPIDEMIC THRESHOLD REPORT

WEEK 5 2022

KWAZULU-NATAL

All Respiratory including confirmed or suspected COVID-19 (J00-J99 & U07) indicators – Inpatients

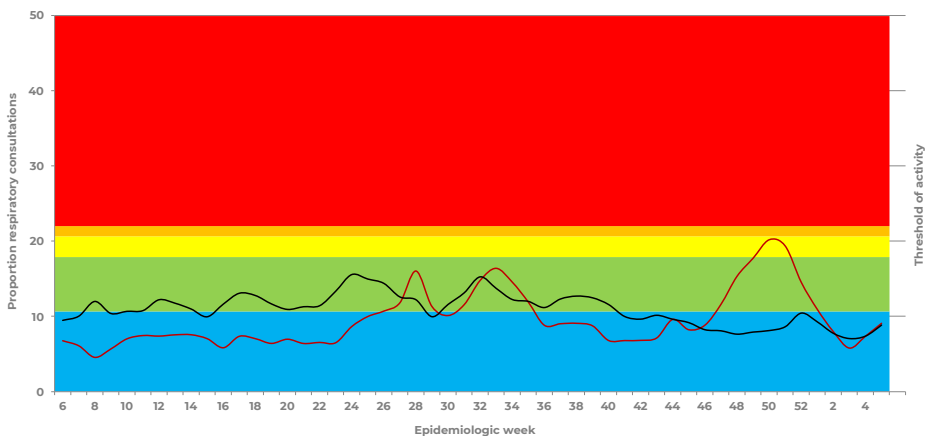


All Respiratory including confirmed or suspected COVID-19 (J00-J99 & U07) indicators – Outpatients

General Practitioners



Emergency Department



Below threshold Low Moderate High Very High

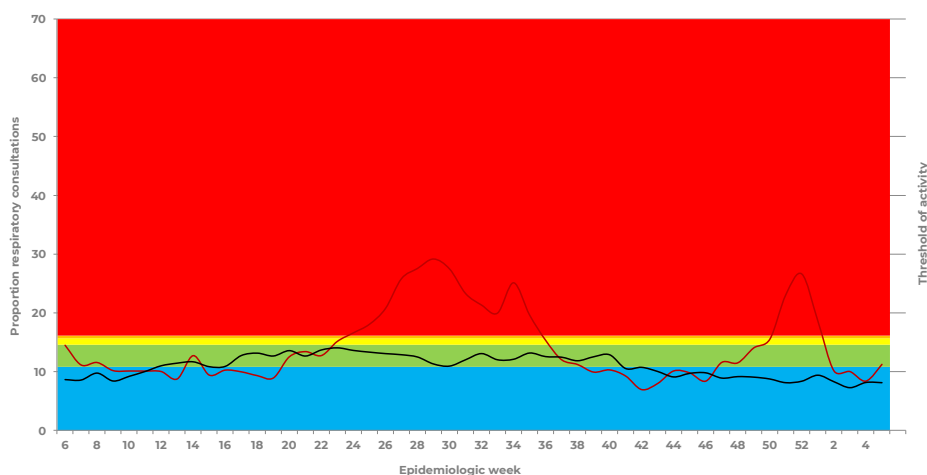
% All Respiratory Mean % 2015- 2019 (Inpatients/Casualty) 2016-2019 (General Practitioner)

PRIVATE CONSULTATIONS SURVEILLANCE EPIDEMIC THRESHOLD REPORT

WEEK 5 2022

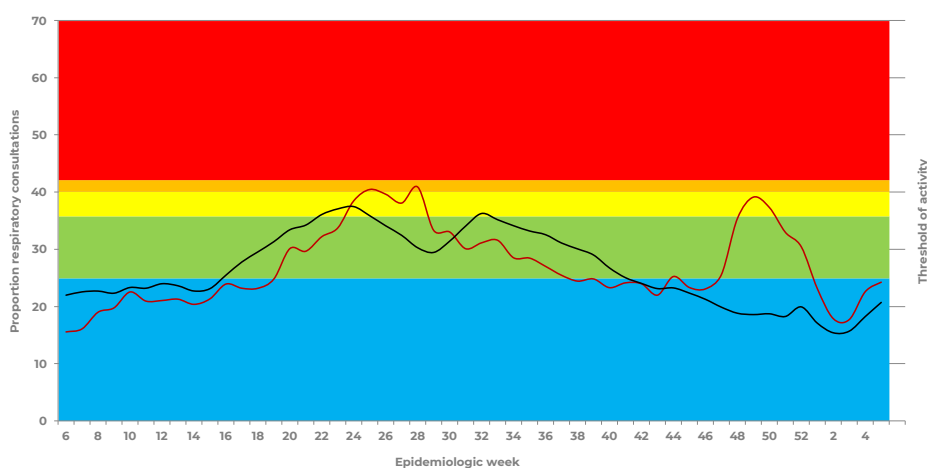
WESTERN CAPE PROVINCE

All Respiratory including confirmed or suspected COVID-19 (J00-J99 & U07) indicators – Inpatients

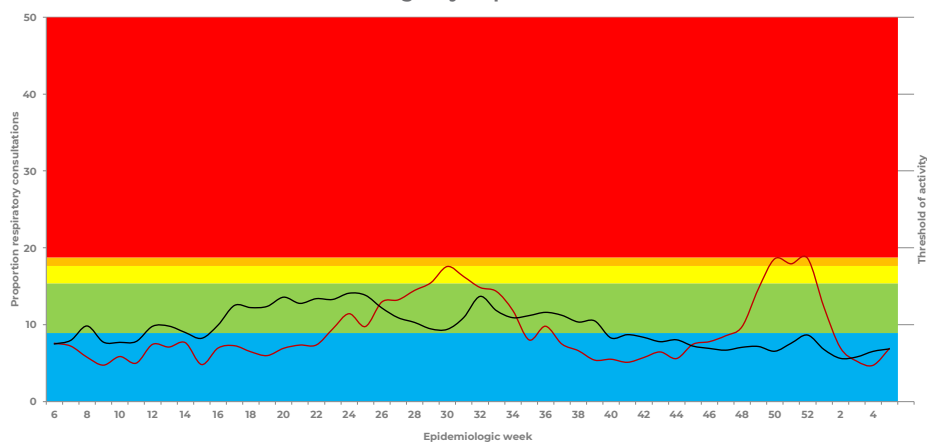


All Respiratory including confirmed or suspected COVID-19 (J00-J99 & U07) indicators – Outpatients

General Practitioners



Emergency Department



Below threshold Low Moderate High Very High
 — % All Respiratory — Mean % 2015- 2019 (Inpatients/Casualty) 2016-2019 (General Practitioner)

PRIVATE CONSULTATIONS SURVEILLANCE EPIDEMIC THRESHOLD REPORT

WEEK 5 2022

ACKNOWLEDGEMENT

We would like to acknowledge the contribution of the following individuals:

Dr Anchen Laubscher, Group Medical Director Netcare

Dr Caroline Maslo, Head of Infection Control Netcare

Mande Toubkin, General Manager Emergency, Trauma, Transplant CSI and Disaster Management Netcare