

COVID-19 Hospital Surveillance

Update: Week 17, 2022

Overview of report

This report summarises data of COVID-19 cases admitted to DATCOV hospital surveillance sites in all provinces. The report is based on data collected from 5 March 2020 to 30 April 2022.

Highlights

- From 5 March 2020 to 30 April 2022, 520,564 COVID-19 admissions and 102,319 in-hospital deaths were reported to DATCOV from 668 facilities (407 public-sector and 261 private-sector) in all nine provinces of South Africa.
- There was 5% increase in the number of new admissions in week 17 2022 (1622) compared to the number of admissions in week 16 2022 (1551).
- Gauteng had the highest number of admissions in the past week (713/1622, 43.9%), followed by KwaZulu-Natal (357/1622, 22.0%) and Western Cape (236/1622, 14.5%). The lowest number of admissions was in Northern Cape (19/1622, 1.2%).
- There was an increase in the average daily COVID-19 admissions comparing the previous 14 days and the current 14 days in all the provinces; and a small increase in deaths comparing the previous 14 days and the current 14 days in Free State, Gauteng and KwaZulu-Natal.
- In the past week, 28 out of 52 districts (53.8%) showed an increase in percentage incidence change in hospital admissions over 14 days: Chris Hani, Nelson Mandela Bay Metro and Sarah Baartman (Eastern Cape), Fezile Dabi, Mangaung Metro, Thabo Mofutsanyana and Xhariep (Free State), City of Johannesburg Metro, City of Tshwane Metro, Ekurhuleni Metro and Sedibeng (Gauteng), Amajuba, Harry Gwala, uMkhanyakude, Umzinyathi and Zululand (KwaZulu-Natal), Sekhukhune (Limpopo), Nkangala (Mpumalanga), Dr Kenneth Kaunda and Dr Ruth Segomotsi Mompati (North West), John Taolo Gaetsewe, Namakwa, Pixley Ka Seme and ZF Mgcawu (Northern Cape) and Cape Winelands, Central Karoo, Garden Route and West Coast (Western Cape).
- The highest weekly incidence risk of COVID-19 admissions reported in week 17 of 2022 was in the ≥65-year age group (9.1 admissions per 100 000 persons), and the lowest weekly incidence risk was in the 10-14-year age group (0.9 admissions per 100 000 persons). The highest change in admissions from week 16 to week 17 was in the ≥65 age group (8.2%).

Methods

Data on hospitalisation was accessed from DATCOV, a hospital surveillance system for COVID-19 admissions, initiated on the 1 April 2020. A COVID-19 case was defined as a person with a positive reverse transcriptase polymerase chain reaction (RT-PCR) assay for SARS-CoV-2 or a person who had a positive SARS-CoV-2 antigen test who was admitted to hospital.

Data on SARS-CoV-2 cases diagnosed in public and private laboratories submitted to the NICD were reported from the line list on the NMCSS.

Case fatality ratio (CFR) was calculated for all closed cases, i.e. COVID-19 deaths divided by COVID-19 deaths plus COVID-19 discharges, excluding individuals who are still admitted in hospital. For the calculation of cumulative incidence risks, StatsSA mid-year population estimates for 2021 were utilised. For comparisons of change in admission, we used 14-day daily average admissions in the current 14-day period compared to the previous 14-day period.

Severity was defined as patients receiving oxygen or invasive ventilation, treated in high care or intensive care wards, developing acute respiratory distress syndrome, or died. While oxygen, ventilation and ward of stay variables are updated daily for all admissions in the private sector, there may be delays with the data being updated in the public sector. Also, as patients remain in hospital their condition may change and percentage of severity may change over time.

Data are submitted by public and private hospitals that have agreed to report COVID-19 admissions through DATCOV surveillance in all nine provinces of South Africa. On 15 July 2020, the National Health Council decided that all hospitals should report to DATCOV. As of 30 April 2022, a total of 668 facilities submitted data on hospitalised COVID-19 cases, 407 from public sector and 261 from private sector (Table 1). This reflects 100% coverage of all public and private hospitals that have had COVID-19 admissions. As new hospitals join the surveillance system, they have retrospectively captured all admissions recorded although there may be some backlogs in retrospective data capture.

Table 1: Number of hospitals reporting data on COVID-19 admissions by province and sector, South Africa, 5 March 2020-30 April 2022.

Facilities reporting	Public	Private
Eastern Cape	86	18
Free State	35	20
Gauteng	40	98
KwaZulu-Natal	69	47
Limpopo	41	7
Mpumalanga	31	9
North West	17	13
Northern Cape	29	6
Western Cape	59	43
South Africa	407	261

Results

Summary of SARS-CoV-2 cases, COVID-19 admissions and in-hospital deaths

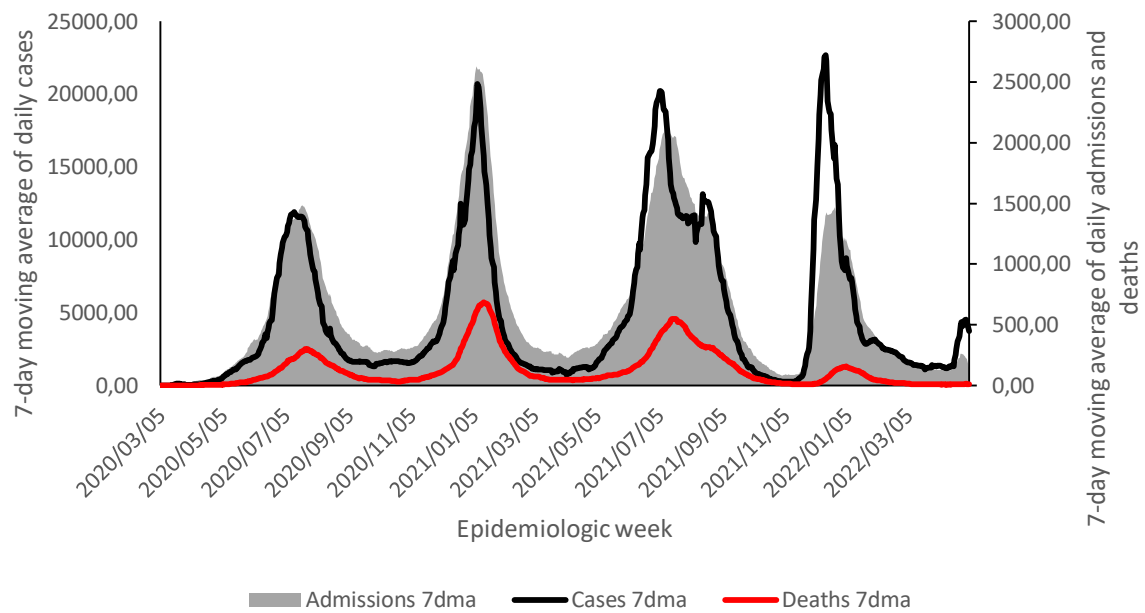


Figure 1: 7-day moving average of SARS-CoV-2 cases, COVID-19 admissions and in-hospital deaths, South Africa, 5 March 2020-30 April 2022.

Epidemiological and demographic trends in admissions

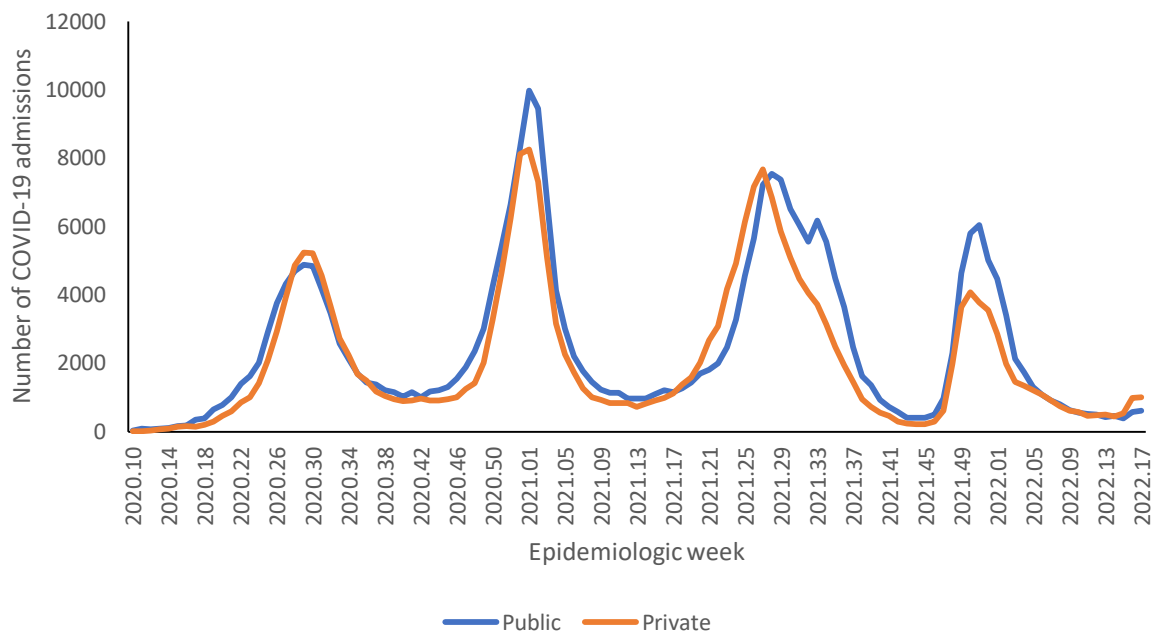


Figure 2: Number of reported COVID-19 admissions by health sector and epidemiologic week of diagnosis, South Africa, 5 March 2020-30 April 2022, N=520,564

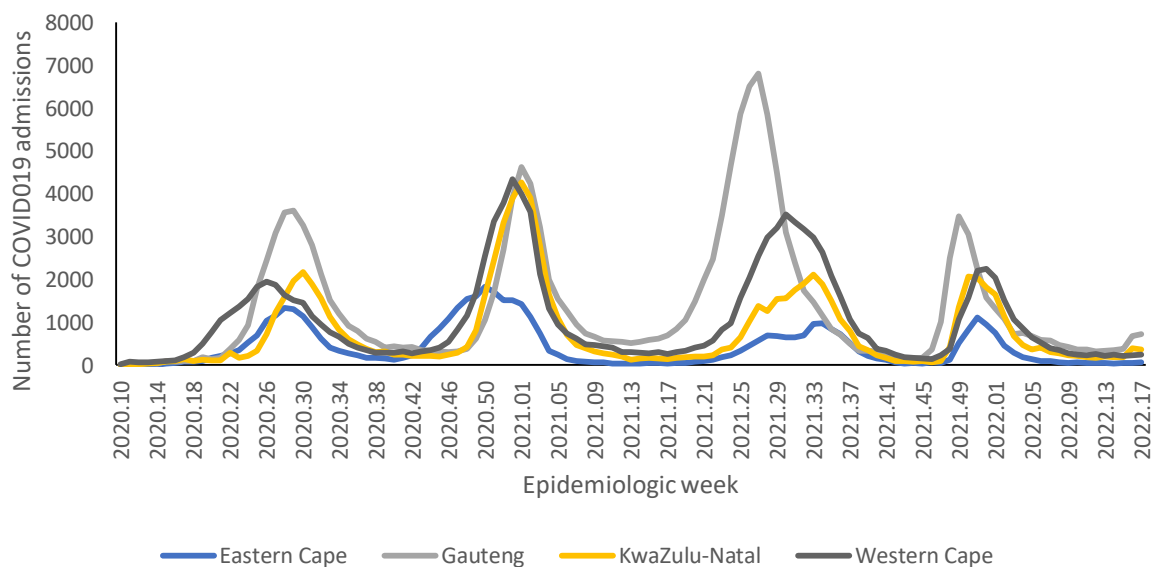


Figure 3a: Number of reported COVID-19 admissions, by provinces with highest admissions and epidemiologic week of diagnosis, South Africa, 5 March 2020-30 April 2022, N=520,564

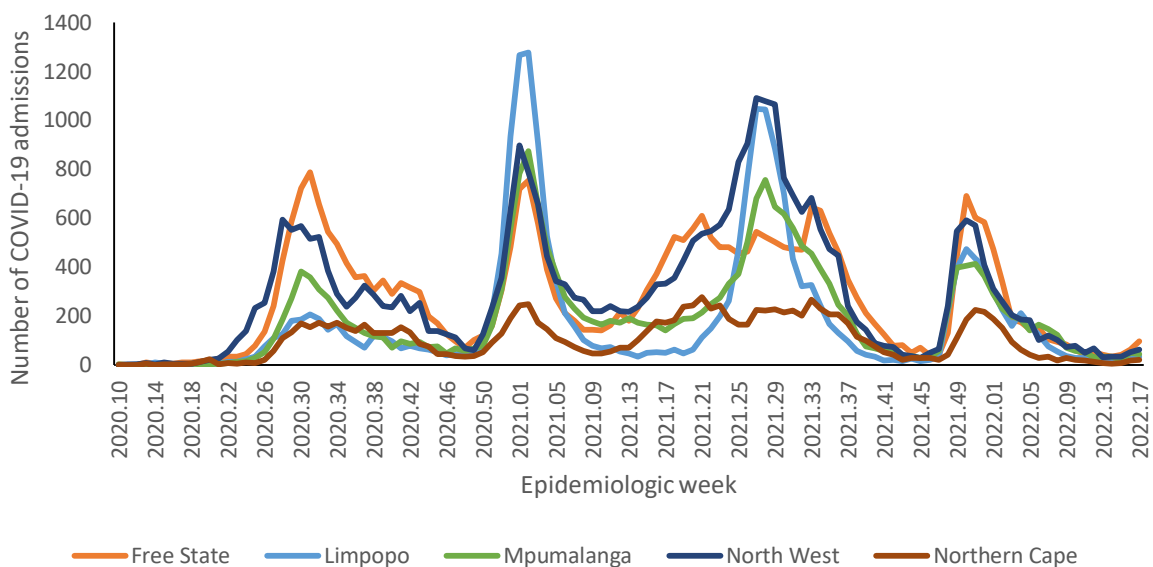


Figure 3b: Number of reported COVID-19 admissions, by provinces with lowest admissions and epidemiologic week of diagnosis, South Africa, 5 March 2020-30 April 2022, N=520,564

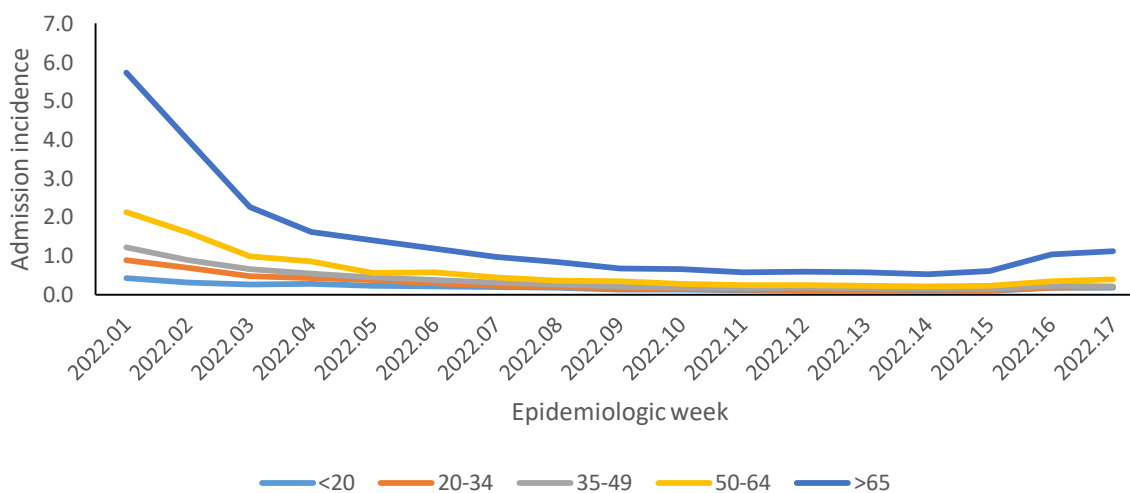


Figure 4a: Incidence risk of COVID-19 admissions per 100,000 persons, by age group (years) and epidemiologic week, South Africa, week 1-17 2022

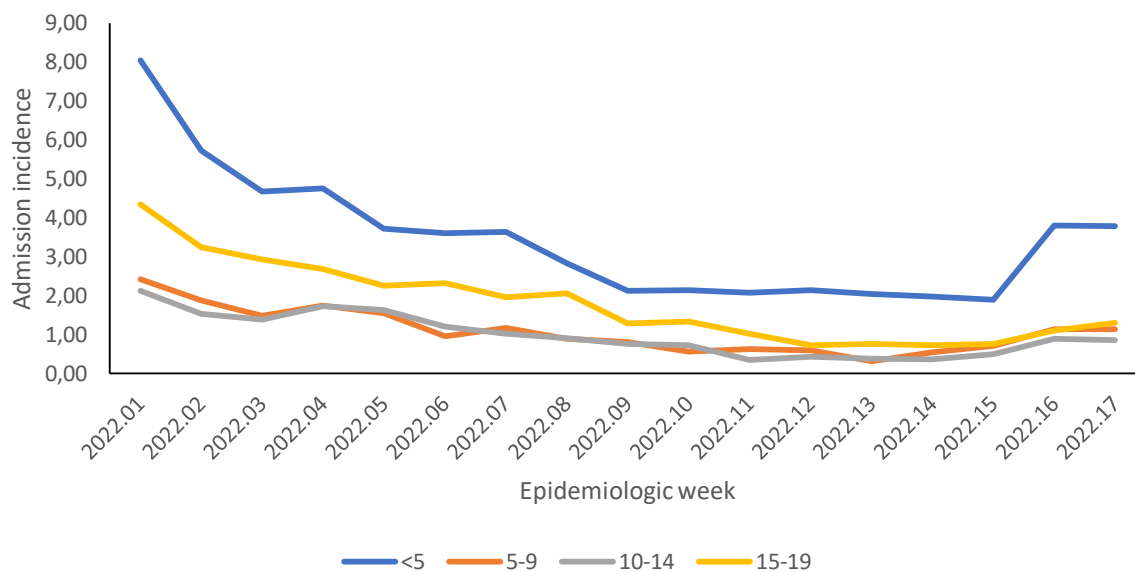


Figure 4b: Incidence risk of COVID-19 admissions per 100,000 persons, among children <20 years, by age group (years and epidemiologic week of diagnosis, South Africa, week 1-17 2022)

Epidemiological and demographic trends in in-hospital mortality

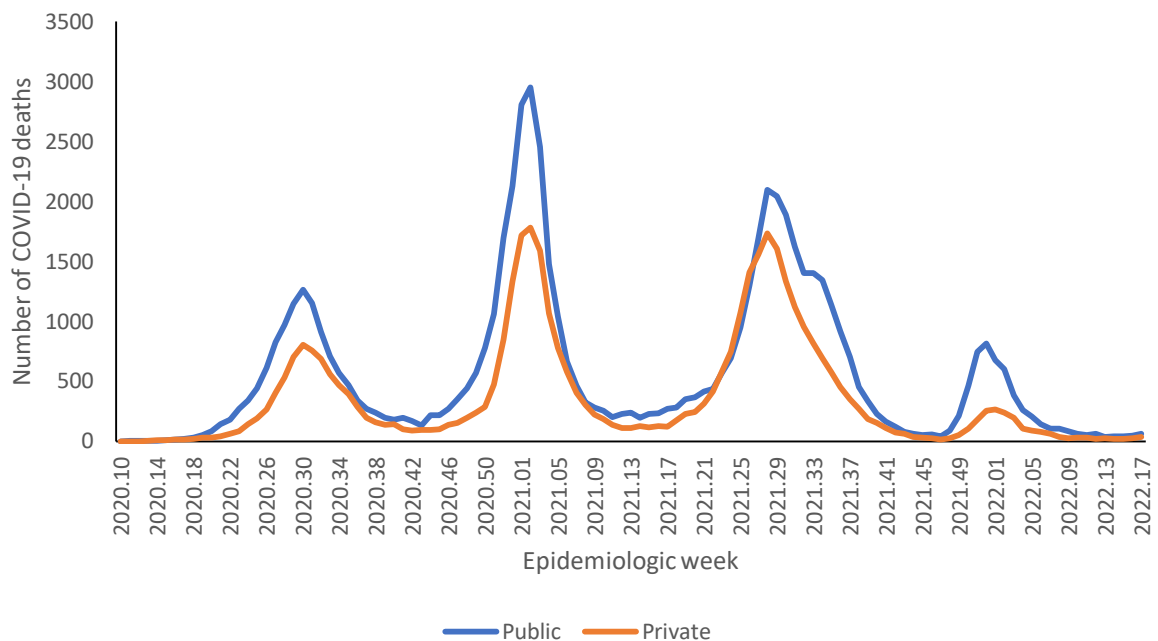


Figure 5: Number of reported COVID-19 in-hospital deaths, by health sector and epidemiologic week, South Africa, 5 March 2020-30 April 2022, N=102,319

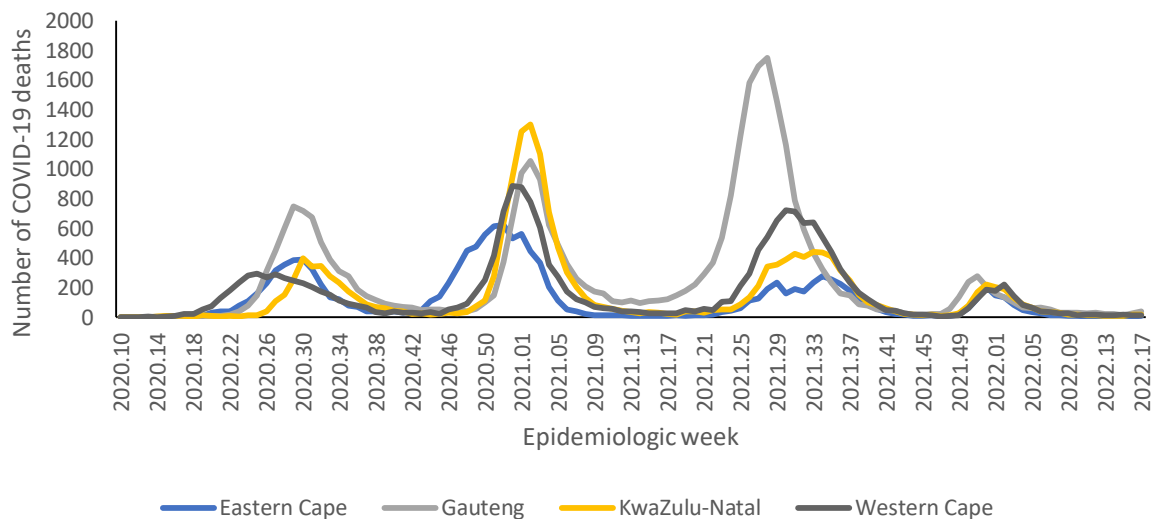


Figure 6a: Number of reported COVID-19 in-hospital deaths, by province with highest deaths and epidemiologic week of death, South Africa, 5 March 2020-30 April 2022, N=102,319

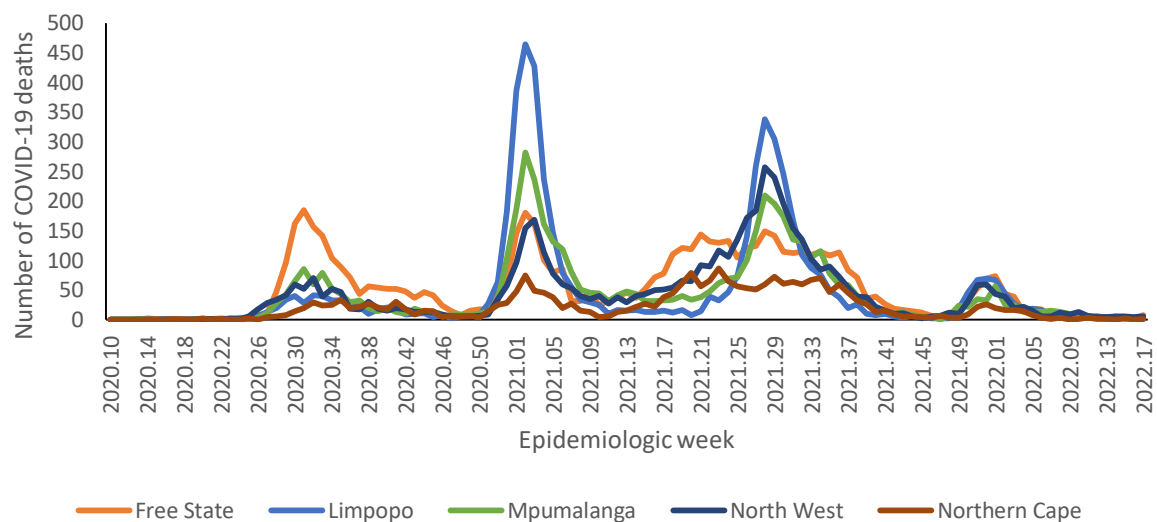


Figure 6b: Number of reported COVID-19 in-hospital deaths, by province with lowest deaths and epidemiologic week of death, South Africa, 5 March 2020-30 April 2022, N=102,319

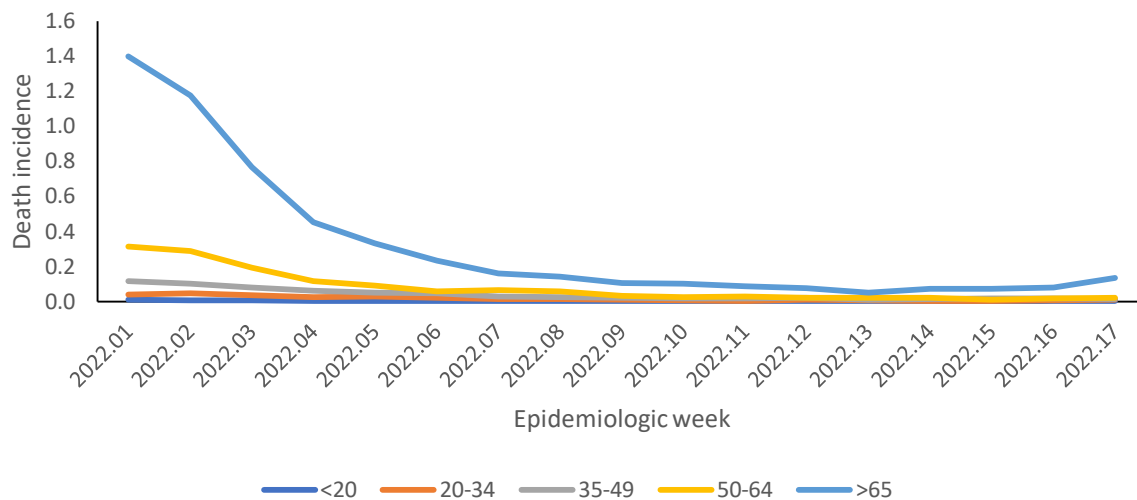


Figure 7a: Incidence risk of COVID-19 in-hospital deaths per 100,000 persons, by age group (years) and epidemiologic week of death, South Africa, week 1-17 2022

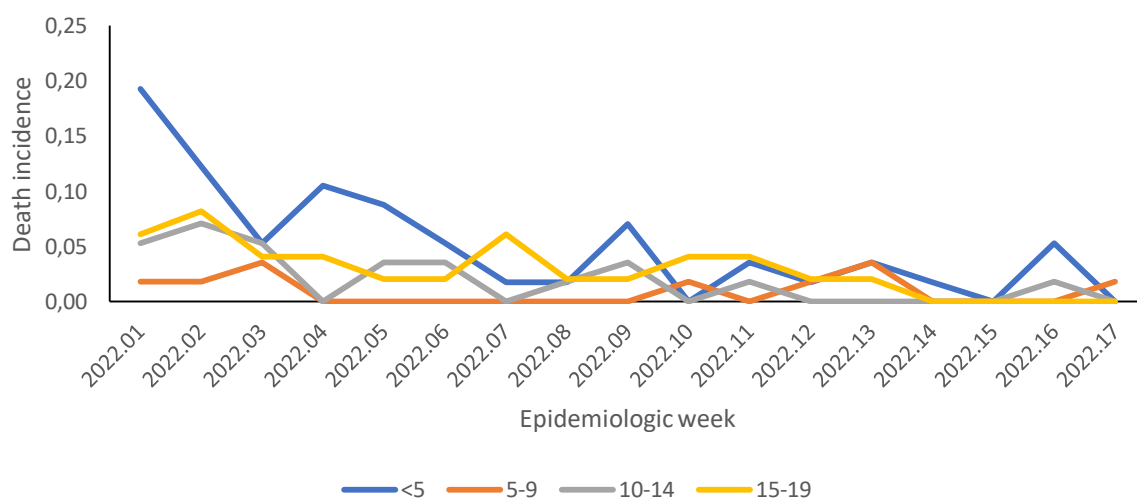


Figure 7b: Incidence risk of COVID-19 in-hospital deaths per 100,000 persons, among children <20 years, by age group (years) and epidemiologic week of death, South Africa, week 1-17 2022

Provincial trends

Table 2: Number and cumulative incidence risk of COVID-19 hospitalisations and in-hospital deaths per 100,000 persons by province, South Africa, 5 March 2020-30 April 2022.

Province	Provincial Population mid 2020*	Cumulative admissions	Cumulative incidence risk of admissions / 100,000	Cumulative deaths	Cumulative incidence risk of deaths / 100,000
Eastern Cape	6676590	47442	710.6	13130	196.7
Free State	2932441	31132	1061.6	6022	205.4
Gauteng	15810388	152 109	962.1	29899	189.1
KwaZulu-Natal	11513575	85264	740.6	17214	149.5
Limpopo	5926724	20811	351.1	5309	89.6
Mpumalanga	4743584	22228	468.6	4825	101.7
North West	4122854	33 388	809.8	4884	118.5
Northern Cape	1303047	11 525	884.5	2428	186.3
Western Cape	7113776	116 665	1640.0	18605	261.5
South Africa	60142978	520 564	865.5	102 316	170.1

*StatsSA mid-year population estimates 2020

Table 3: Previous 14 days and current 14 days daily average COVID-19 admissions and deaths and percentage changes, South Africa, 02 April-30 April 2022.

Province	Hospital admissions		Percentage change in admissions	Hospital deaths		Percentage change in deaths
	Previous 14 days average admissions	Current 14 days average admissions		Previous 14 days average deaths	Current 14 days average deaths	
Eastern Cape	5.50	7.71	40.26	0.79	0.79	0.00
Free State	5.14	11.36	120.83	0.43	0.71	66.67
Gauteng	51.36	98.86	92.49	2.36	4.71	100.00
KwaZulu-Natal	26.14	53.43	104.37	1.14	2.36	106.25
Limpopo	1.86	4.50	142.31	0.29	0.14	-50.00
Mpumalanga	3.71	6.57	76.92	0.50	0.36	-28.57
North West	4.86	8.14	67.65	0.79	0.71	-9.09
Northern Cape	0.64	2.64	311.11	0.14	0.07	-50.00
Western Cape	31.71	33.29	4.95	2.00	1.86	-7.14

* Reporting of new admissions in the most recent week may be delayed

Table 4: Previous 7 days and current 7 days daily average COVID-19 admissions and deaths and percentage changes, South Africa, 16 April-30 April 2022.

Province	Hospital admissions		Percentage change in admissions	Hospital deaths		Percentage change in deaths
	Previous 7 days average admissions	Current 7 days average admissions		Previous 7 days average deaths	Current 7 days average deaths	
Eastern Cape	6.86	8.57	25.00	0.71	0.86	20.00
Free State	8.86	13.86	56.45	0.29	1.14	300.00
Gauteng	96.00	101.71	5.95	3.86	5.57	44.44
KwaZulu-Natal	55.86	51.00	-8.70	2.29	2.43	6.25
Limpopo	4.14	4.86	17.24	0.14	0.14	0.00
Mpumalanga	7.00	6.14	-12.24	0.43	0.29	-33.33
North West	7.29	9.00	23.53	0.57	0.86	50.00
Northern Cape	2.57	2.71	5.56	0.00	0.14	0.00
Western Cape	32.86	33.71	2.61	1.71	2.00	16.67

* Reporting of new admissions in the most recent week may be delayed

Eastern Cape

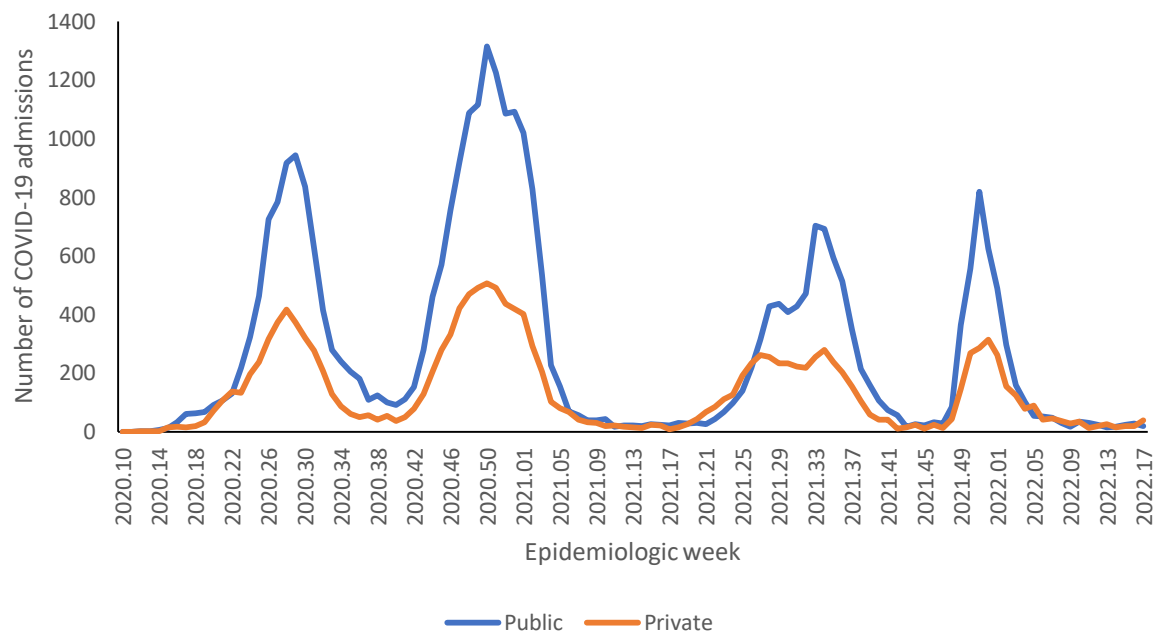


Figure 8: Number of reported COVID-19 admissions by health sector and epidemiologic week of diagnosis, Eastern Cape, 5 March 2020-30 April 2022, N=47,442

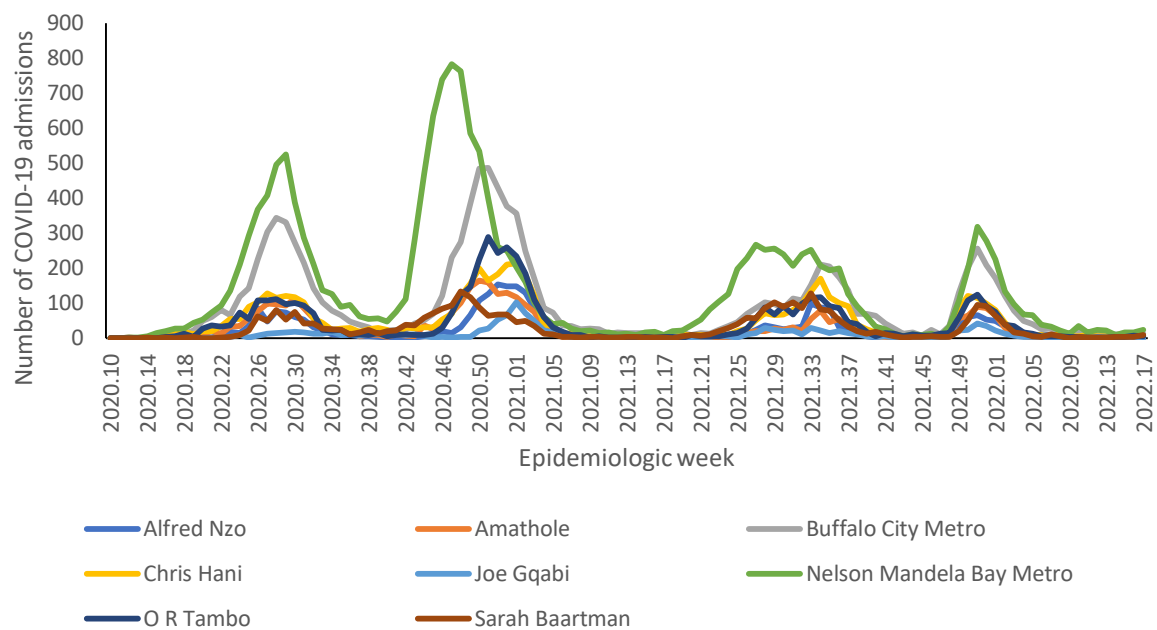


Figure 9: Number of reported COVID-19 admissions, by district and epidemiologic week, Eastern Cape, 5 March 2020-30 April 2022, N=47,442

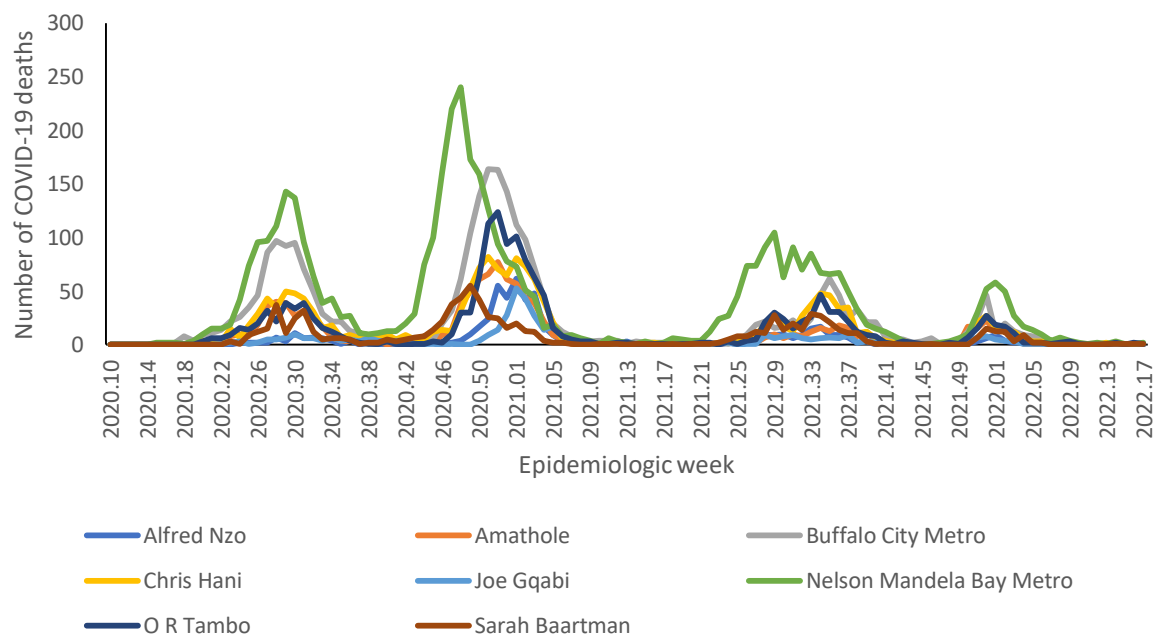


Figure 10: Number of reported COVID-19 in-hospital deaths, by district and epidemiologic week, Eastern Cape, 5 March 2020-30 April 2022, N=13,130

Table 5: Previous 14 days and current 14 days average COVID-19 admissions and deaths and percentage changes, Eastern Cape, 02 April-30 April 2022.

District	Previous 14 days admissions average	Current 14 days admissions average	Percentage change in admissions	Previous 14 days deaths average	Current 14 days deaths average	Percentage change in deaths
Alfred Nzo	0.14	0.21	50.00	0.00	0.00	0.00
Amathole	0.29	0.29	0.00	0.07	0.07	0.00
Buffalo City Metro	1.57	1.79	13.64	0.14	0.07	-50.00
Chris Hani	0.71	0.79	10.00	0.00	0.07	0.00
Joe Gqabi	0.00	0.07	0.00	0.00	0.00	0.00
Nelson Mandela Bay	1.79	2.93	64.00	0.29	0.21	-25.00
O R Tambo	0.50	0.86	71.43	0.14	0.21	50.00
Sarah Baartman	0.50	0.79	57.14	0.14	0.14	0.00

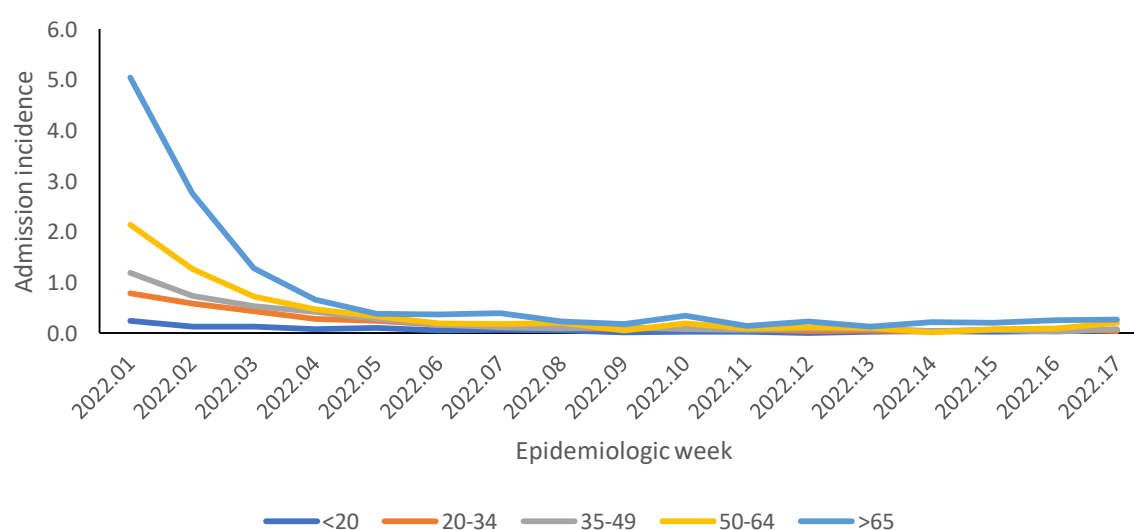


Figure 11a: Incidence risk of COVID-19 admissions per 100,000 persons, by age group (years) and epidemic week of diagnosis, Eastern Cape, week 1-17 2022

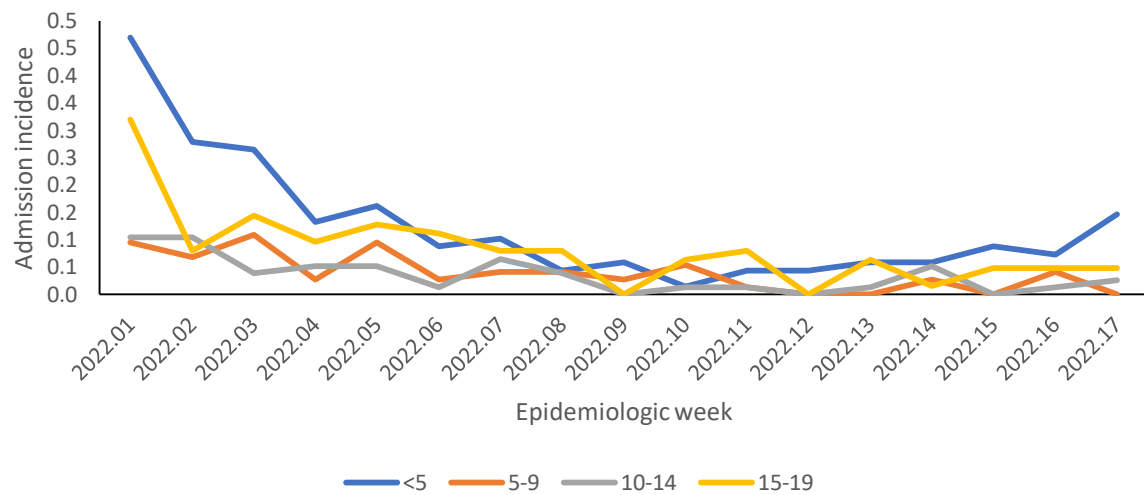


Figure 11b: Incidence risk of COVID-19 admissions per 100,000 persons, among children <20 years, by age group (years) and epidemiologic week of diagnosis, Eastern Cape, week 1-17 2022

Free State

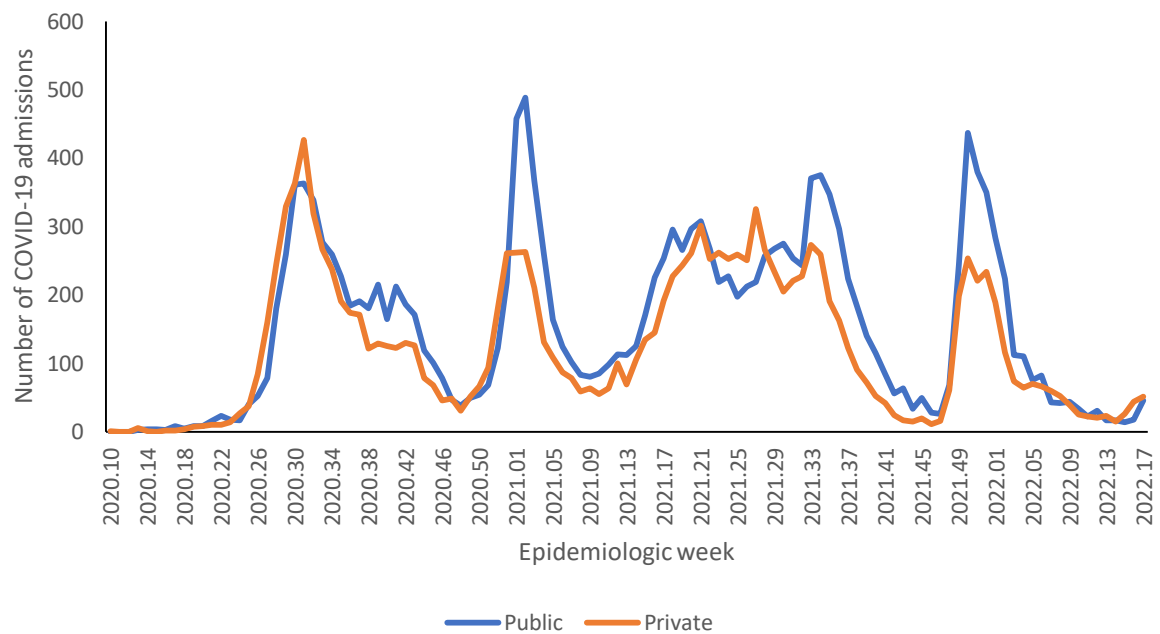


Figure 12: Number of reported COVID-19 admissions by health sector and epidemiologic week of diagnosis, Free State, 5 March 2020-30 April 2022, N=31,132

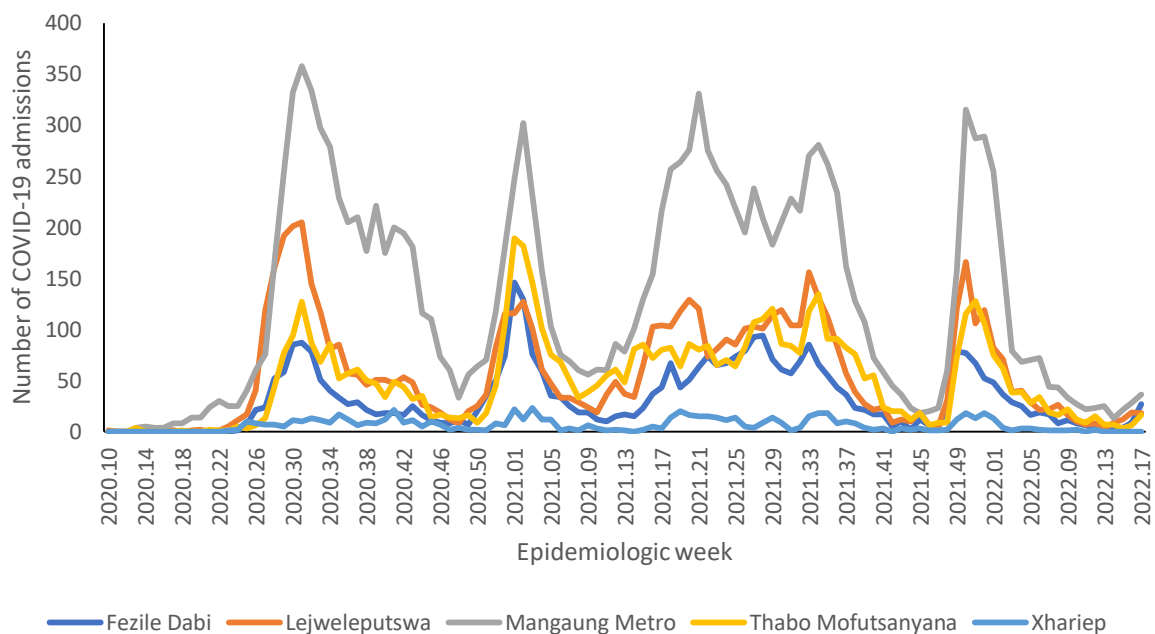


Figure 13: Number of reported COVID-19 admissions, by district and epidemiologic week, Free State, 5 March 2020-30 April 2022, N=31,132

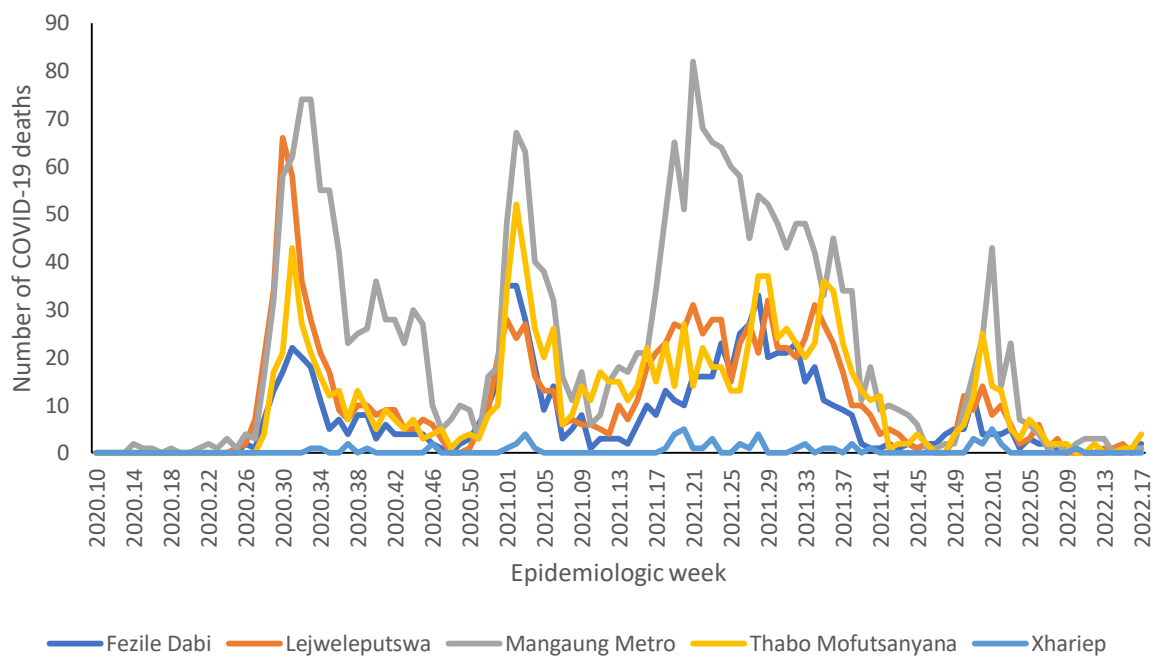


Figure 14: Number of reported COVID-19 in-hospital deaths, by district and epidemiologic week, Free State, 5 March 2020-30 April 2022, N=6,022

Table 6: Previous 14 days and current 14 days average COVID-19 admissions and deaths and percentage changes, Free State, 02 April-30 April 2022.

District	Previous 14 days admissions average	Current 14 days admissions average	Percentage change in admissions	Previous 14 days deaths average	Current 14 days deaths average	Percentage change in deaths
Fezile Dabi	0.50	2.57	414.29	0.14	0.14	0.00
Lejweleputswa	1.50	2.64	76.19	0.21	0.07	-66.67
Mangaung Metro	2.43	4.57	88.24	0.00	0.14	0.00
Thabo Mofutsanyana	0.71	1.57	120.00	0.07	0.36	400.00
Xhariep	0.00	0.00	0.00	0.00	0.00	0.00

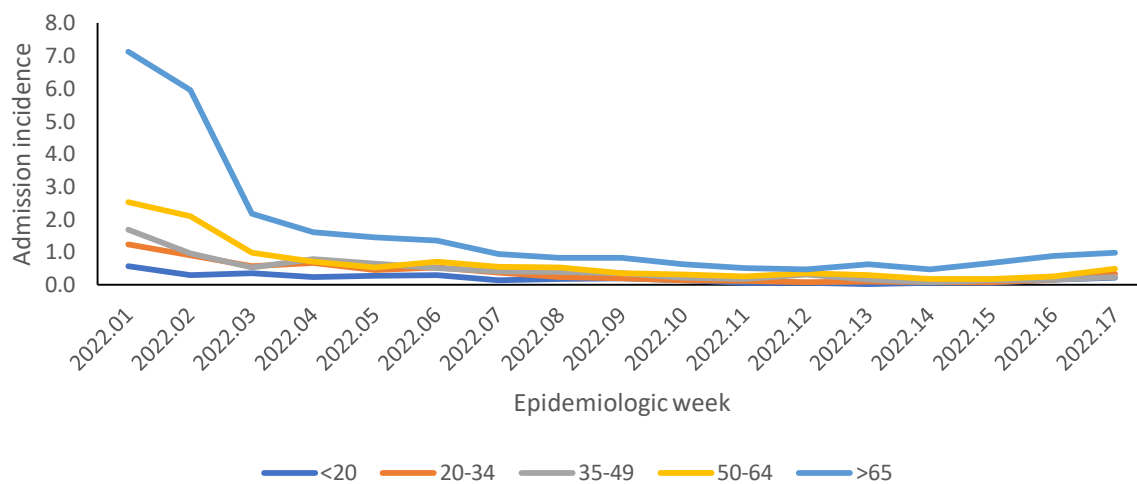


Figure 15a: Incidence risk of COVID-19 admissions per 100,000 persons, by age group (years) and epidemiologic week of diagnosis, Free State, week 1-17 2022

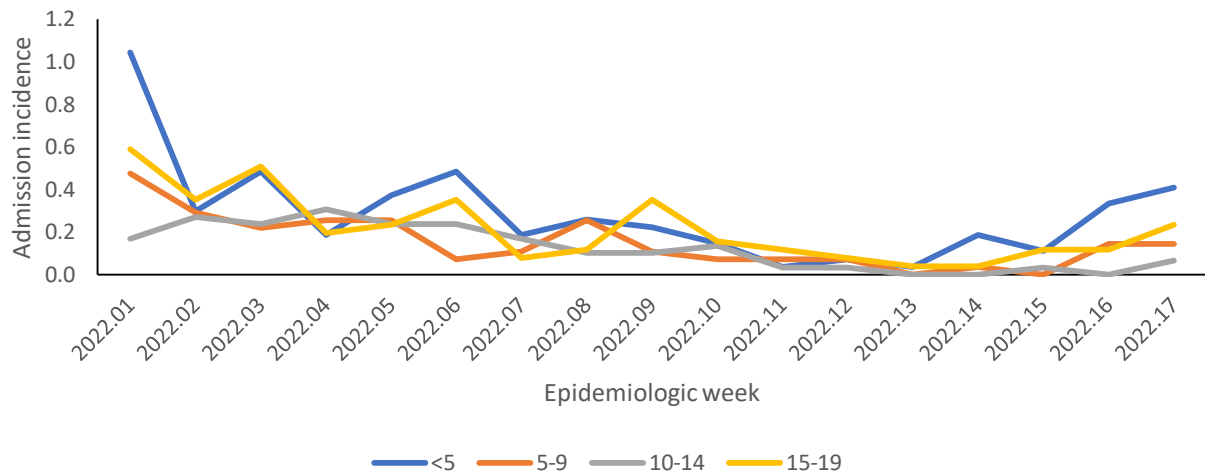


Figure 15b: Incidence risk of COVID-19 admissions per 100,000 persons, among children <20 years, by age group (years) and epidemiologic week of diagnosis, Free State, week 1-17 2022

Gauteng

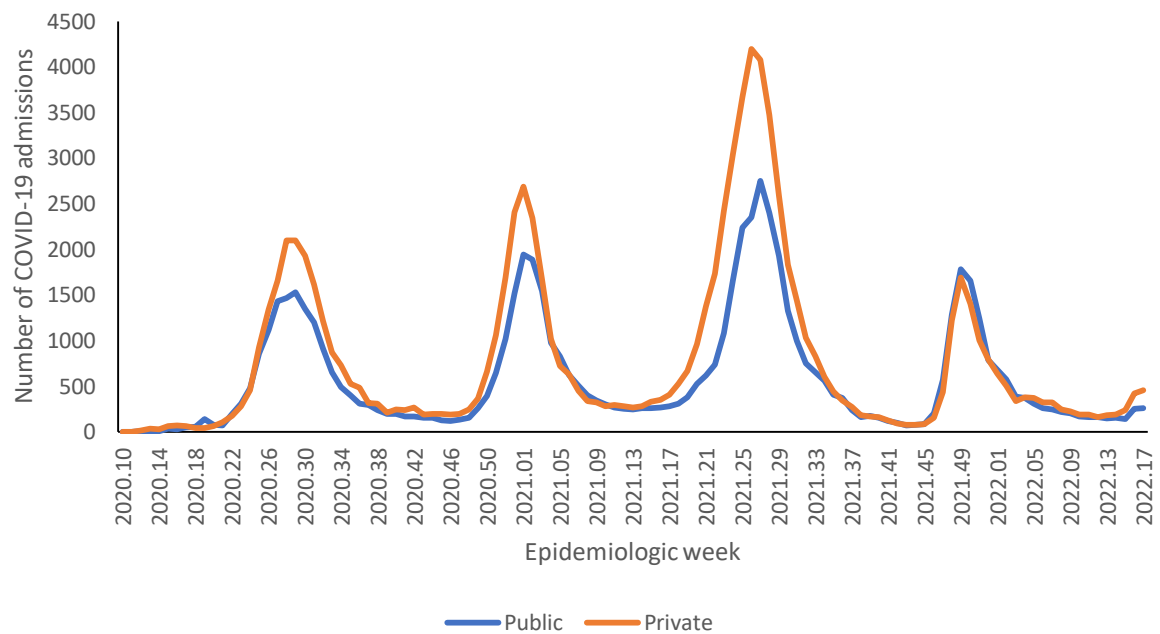


Figure 16: Number of reported COVID-19 admissions by health sector and epidemiologic week of diagnosis, Gauteng, 5 March 2020-30 April 2022, N=152,109

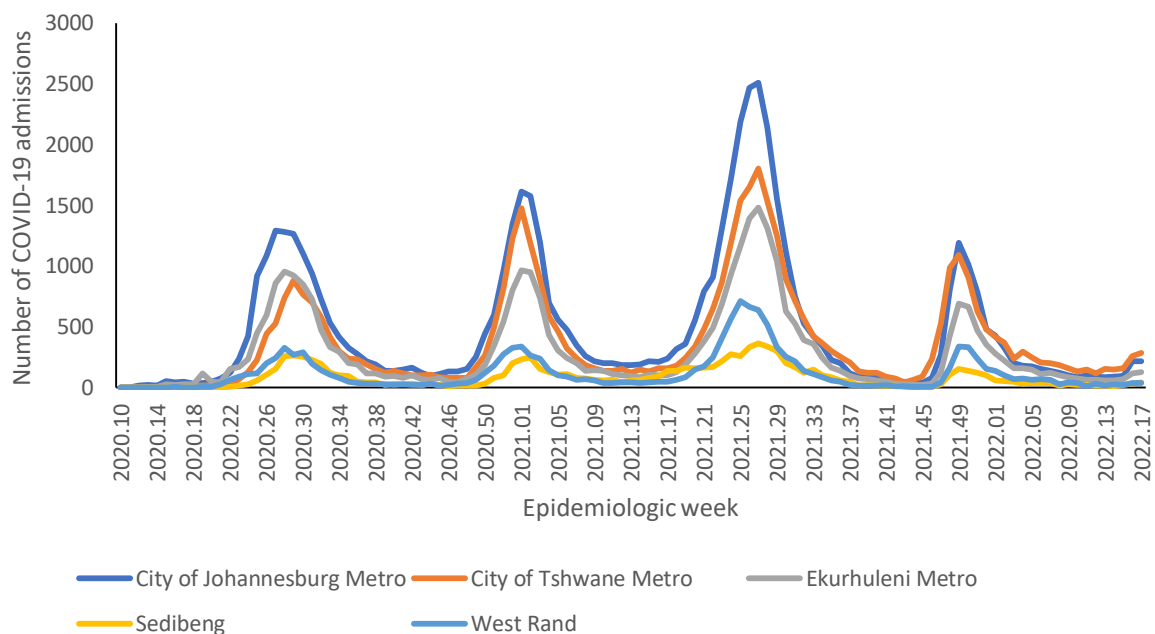


Figure 17: Number of reported COVID-19 admissions, by district and epidemiologic week, Gauteng, 5 March 2020-30 April 2022, N=152,109

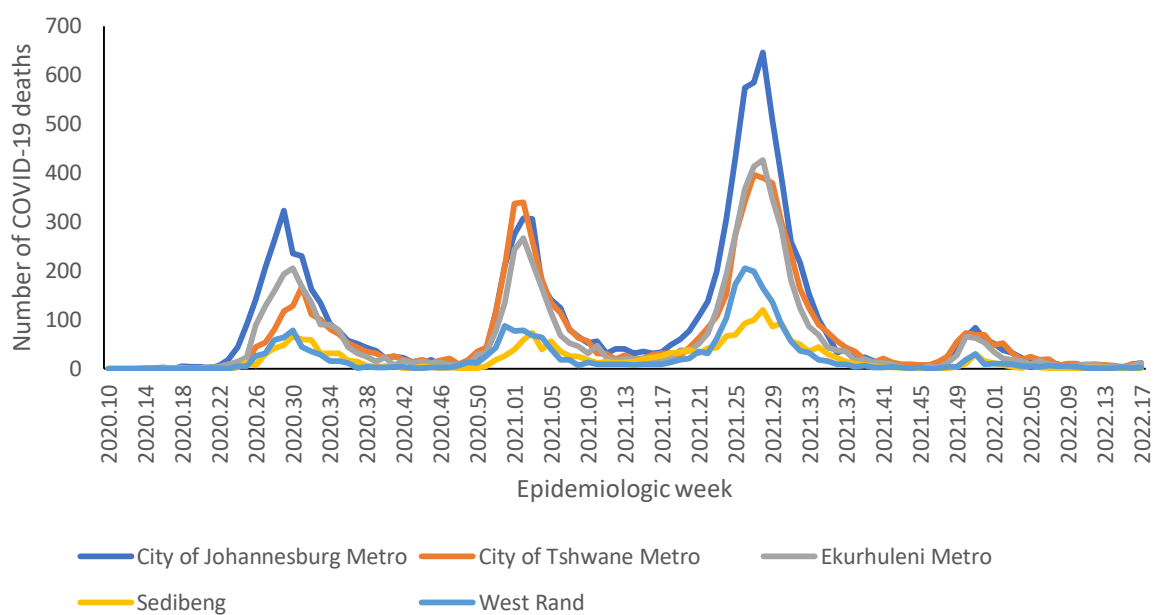


Figure 18: Number of reported COVID-19 in-hospital deaths, by district and epidemiologic week, Gauteng, 5 March 2020-30 April 2022, N=29,899

Table 7: Previous 14 days and current 14 days average COVID-19 admissions and deaths and percentage changes, Gauteng, 02 April-30 April 2022.

District	Previous 14 days admissions average	Current 14 days admissions average	Percentage change in admissions	Previous 14 days deaths average	Current 14 days deaths average	Percentage change in deaths
City of Johannesburg Metro	13.29	31.21	134.95	0.43	1.57	266.67
City of Tshwane Metro	22.14	38.86	75.48	0.79	1.43	81.82
Ekurhuleni Metro	9.29	17.79	91.54	0.57	1.21	112.50
Sedibeng	2.93	5.50	87.80	0.21	0.14	-33.33
West Rand	3.71	5.50	48.08	0.36	0.36	0.00

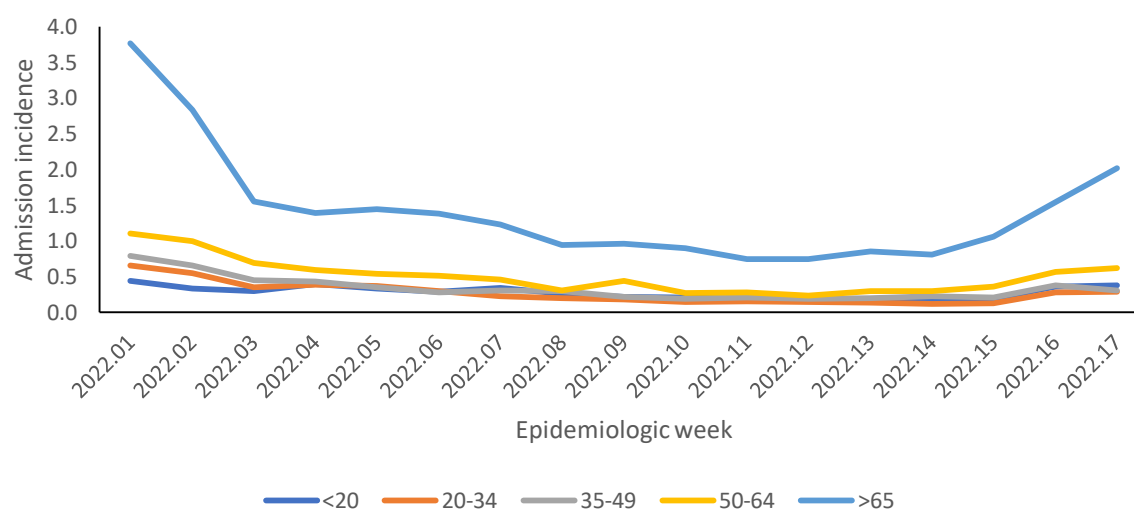


Figure 19a: Incidence risk of COVID-19 admissions per 100,000 persons, by age group (years) and epidemiologic week of diagnosis, Gauteng, week 1-17 2022

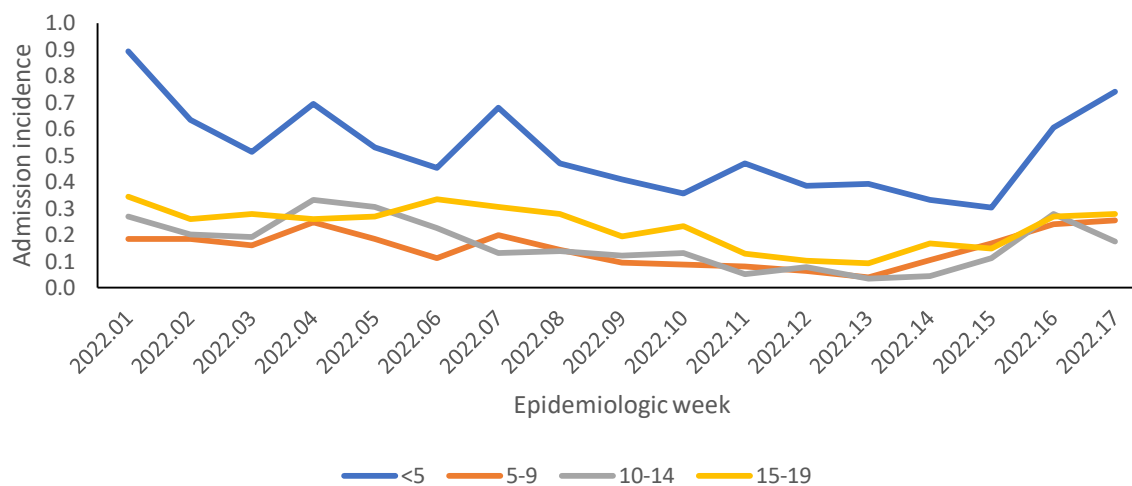


Figure 19b: Incidence risk of COVID-19 admissions per 100,000 persons, among children <20 years, by age group (years) and epidemiologic week of diagnosis, Gauteng, week 1-17 2022

KwaZulu-Natal

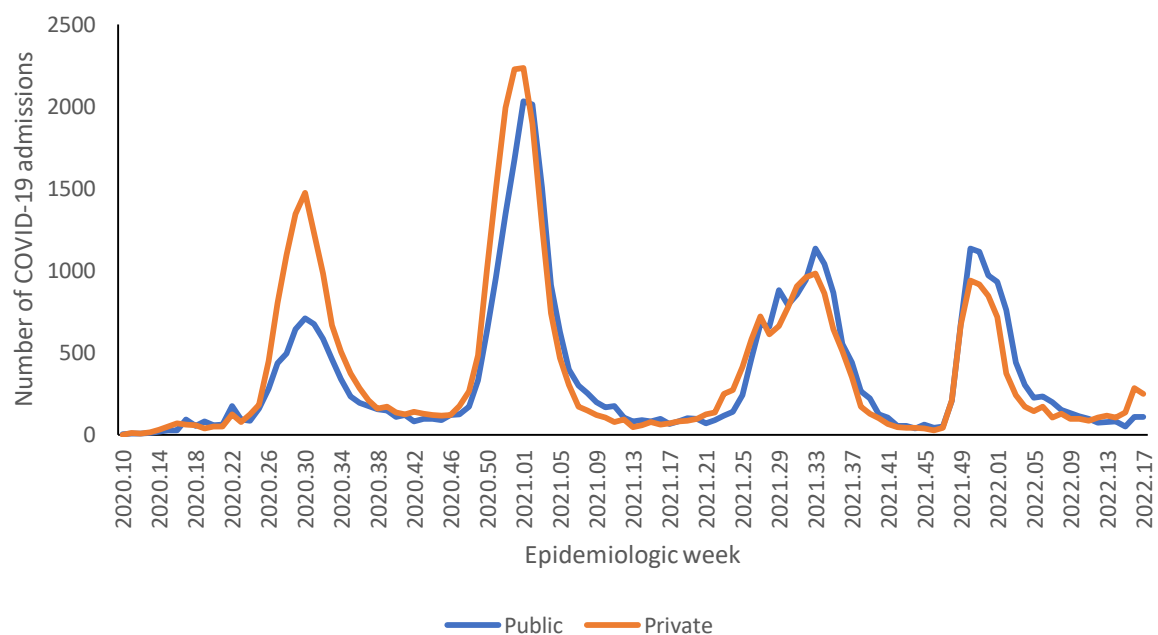


Figure 20: Number of reported COVID-19 admissions by health sector and epidemiologic week of diagnosis, KwaZulu-Natal, 5 March 2020-30 April 2022, N=85,264

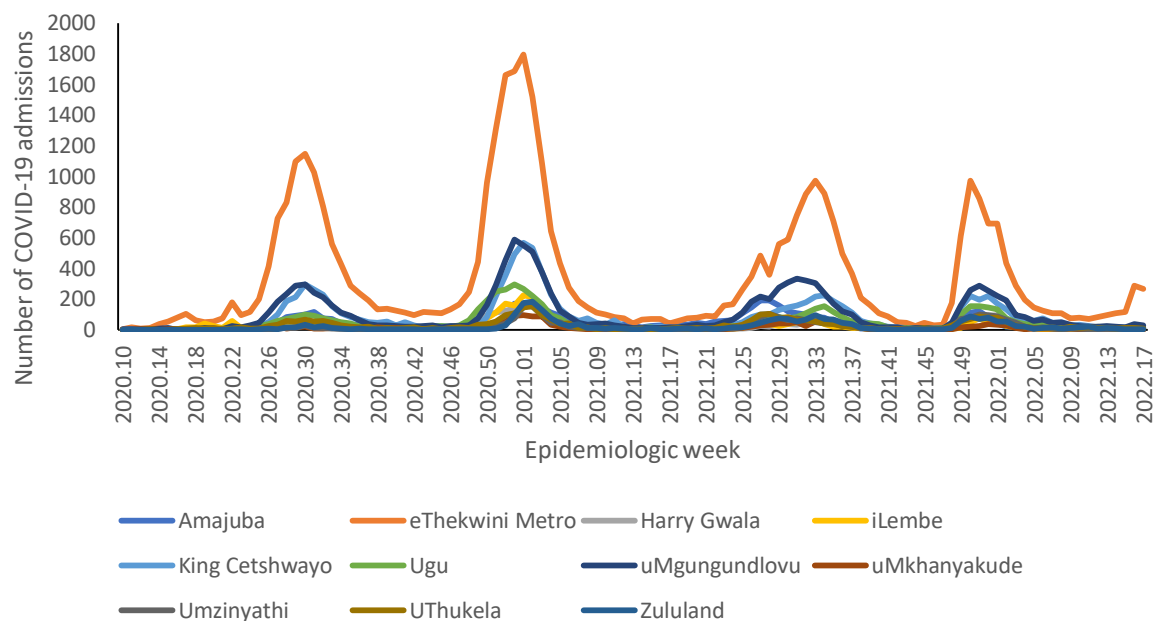


Figure 21: Number of reported COVID-19 admissions, by district and epidemiologic week, KwaZulu-Natal, 5 March 2020-30 April 2022, N=85,264

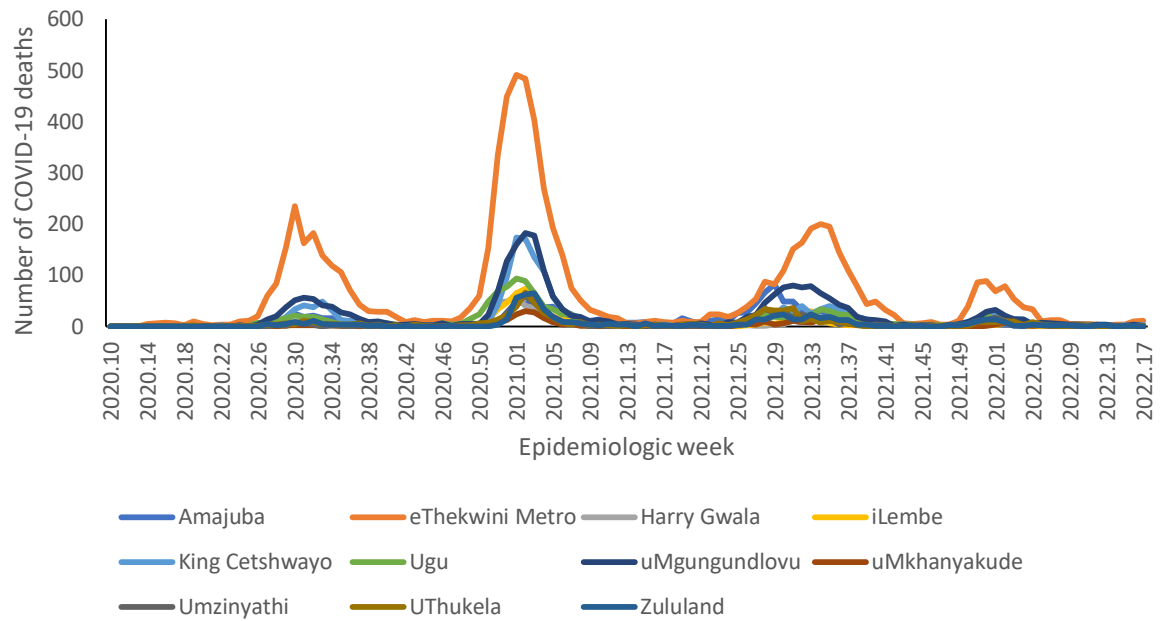


Figure 22: Number of reported COVID-19 in-hospital deaths, by district and epidemiologic week, KwaZulu-Natal, 5 March 2020-30 April 2022, N=17,216

Table 8: Previous 14 days and current 14 days average COVID-19 admissions and deaths and percentage changes, KwaZulu-Natal, 02 April-30 April 2022.

District	Previous 14 days admissions average	Current 14 days admissions average	Percentage change in admissions	Previous 14 days deaths average	Current 14 days deaths average	Percentage change in deaths
Amajuba	1.07	1.21	13.33	0.00	0.07	0.00
eThekweni Metro	15.93	39.64	148.88	0.57	1.50	162.50
Harry Gwala	0.29	0.29	0.00	0.07	0.00	-100.00
iLembe	0.64	0.79	22.22	0.00	0.00	0.00
King Cetshwayo	2.07	2.21	6.90	0.21	0.29	33.33
Ugu	1.07	2.07	93.33	0.07	0.00	-100.00
uMgungundlovu	2.57	4.57	77.78	0.14	0.36	150.00
uMkhanyakude	0.29	0.00	-100.00	0.00	0.00	0.00
Umzinyathi	0.29	0.64	125.00	0.00	0.00	0.00
UThukela	1.14	1.36	18.75	0.00	0.07	0.00
Zululand	0.79	0.64	-18.18	0.07	0.07	0.00

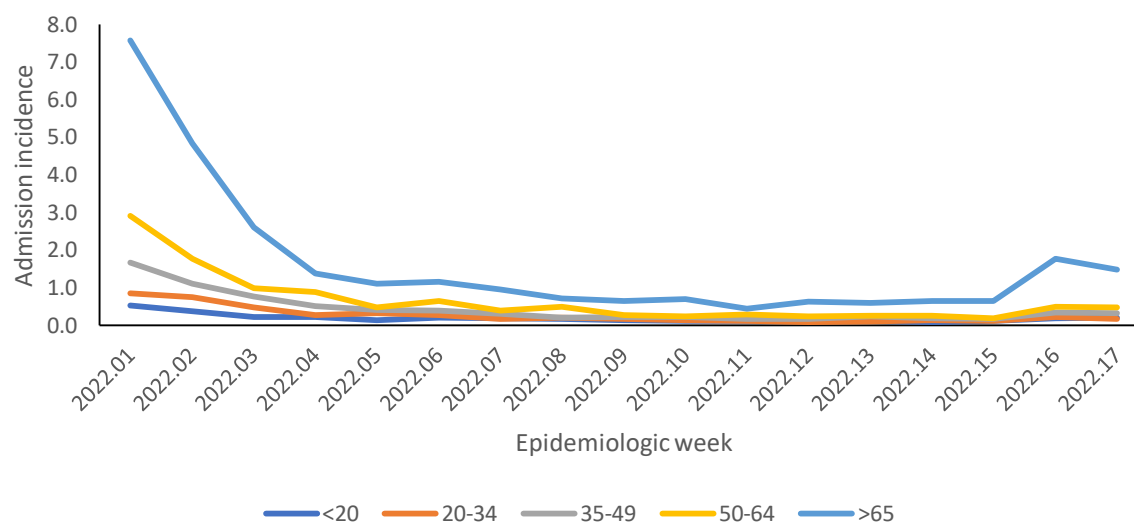


Figure 23a: Incidence risk of COVID-19 admissions per 100,000 persons, by age group (years) and epidemiologic week of diagnosis, KwaZulu-Natal, week 1-17 2022

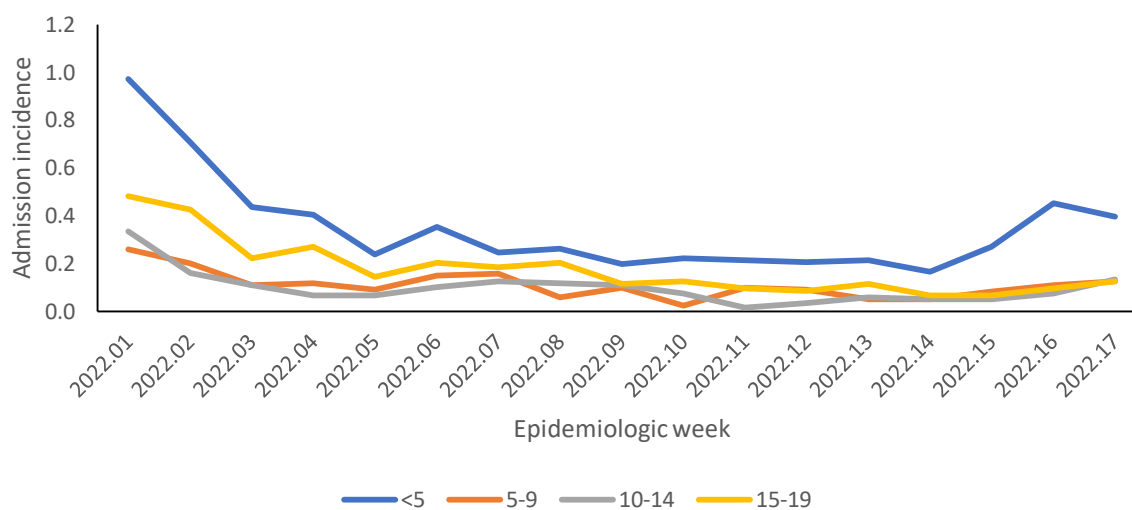


Figure 23b: Incidence risk of COVID-19 admissions per 100,000 persons, among children <20 years, by age group (years) and epidemiologic week of diagnosis, KwaZulu-Natal, week 1-17 2022

Limpopo

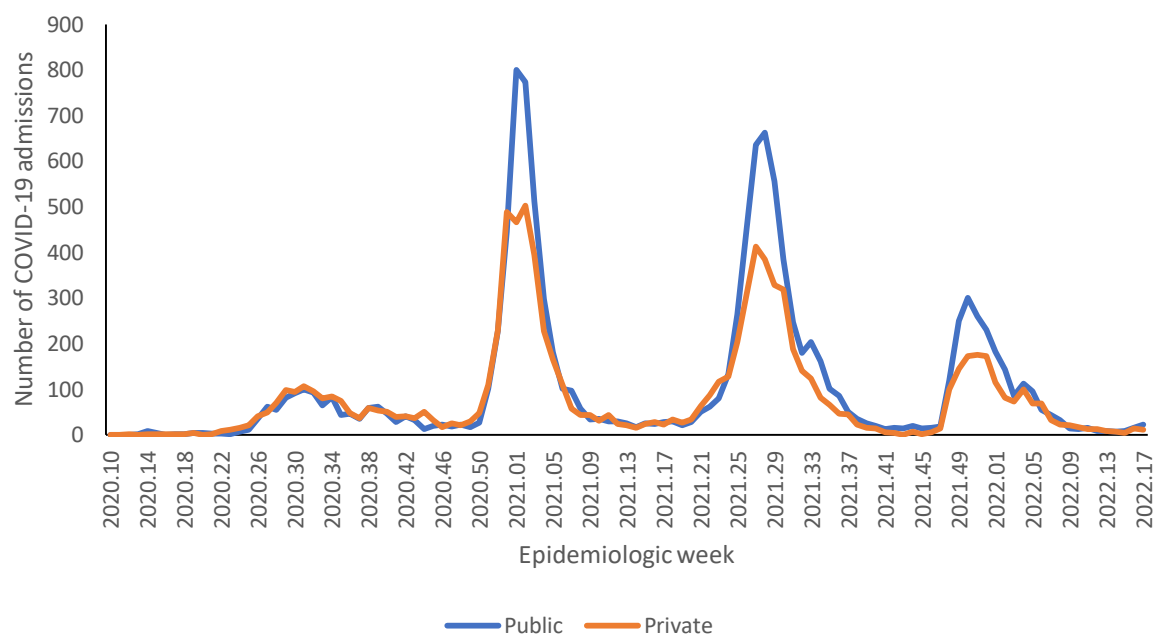


Figure 24: Number of reported COVID-19 admissions by health sector and epidemiologic week of diagnosis, Limpopo, 5 March 2020-30 April 2022, N=20,811

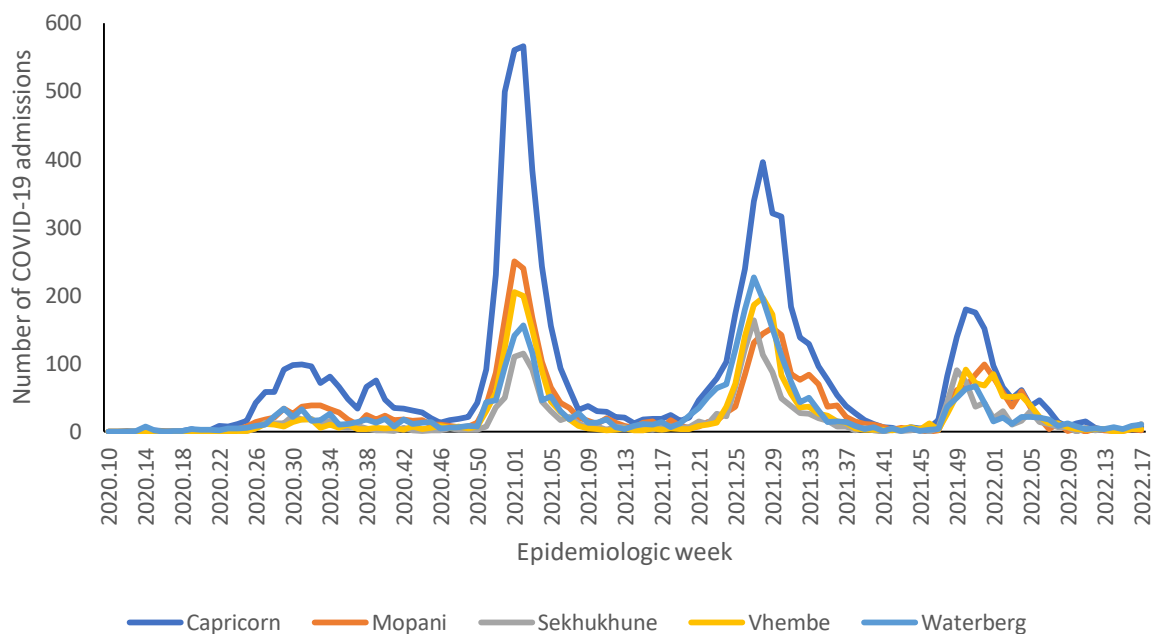


Figure 25: Number of reported COVID-19 admissions, by district and epidemiologic week, Limpopo, 5 March 2020-30 April 2022, N=20,811

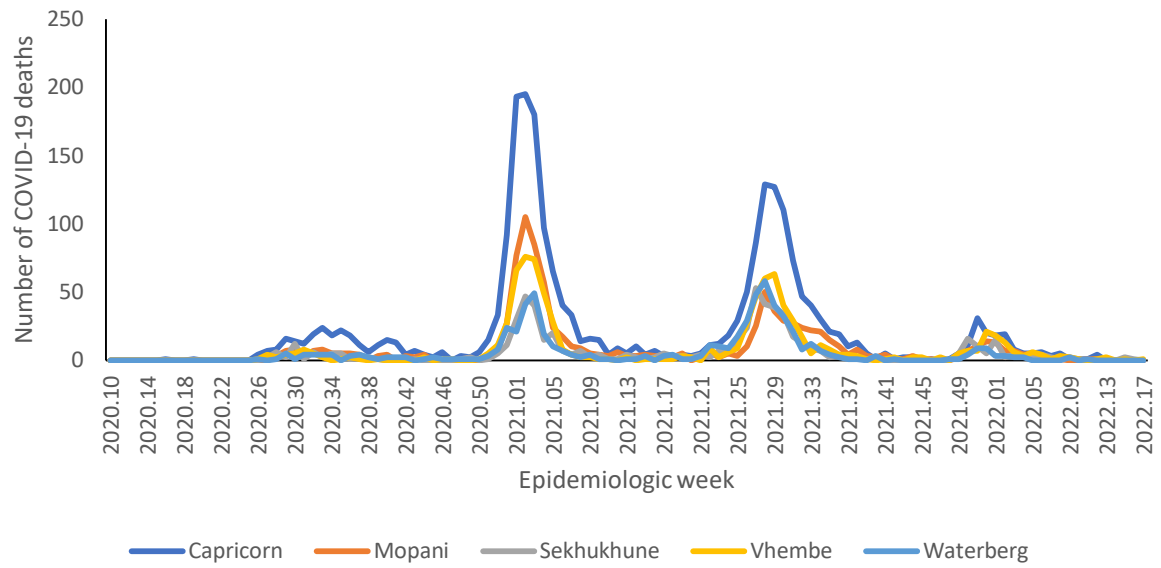


Figure 26: Number of reported COVID-19 in-hospital deaths, by district and epidemiologic week, Limpopo, 5 March 2020-30 April 2022, N=5,309

Table 9: Previous 14 days and current 14 days average COVID-19 admissions and deaths and percentage changes, Limpopo, 02 April-30 April 2022.

District	Previous 14 days admissions average	Current 14 days admissions average	Percentage change in admissions	Previous 14 days deaths average	Current 14 days deaths average	Percentage change in deaths
Capricorn	0.43	1.00	133.33	0.07	0.00	-100.00
Mopani	0.14	0.43	200.00	0.00	0.00	0.00
Sekhukhune	0.43	1.14	166.67	0.14	0.07	-50.00
Vhembe	0.07	0.57	700.00	0.07	0.07	0.00
Waterberg	0.79	1.36	72.73	0.00	0.00	0.00

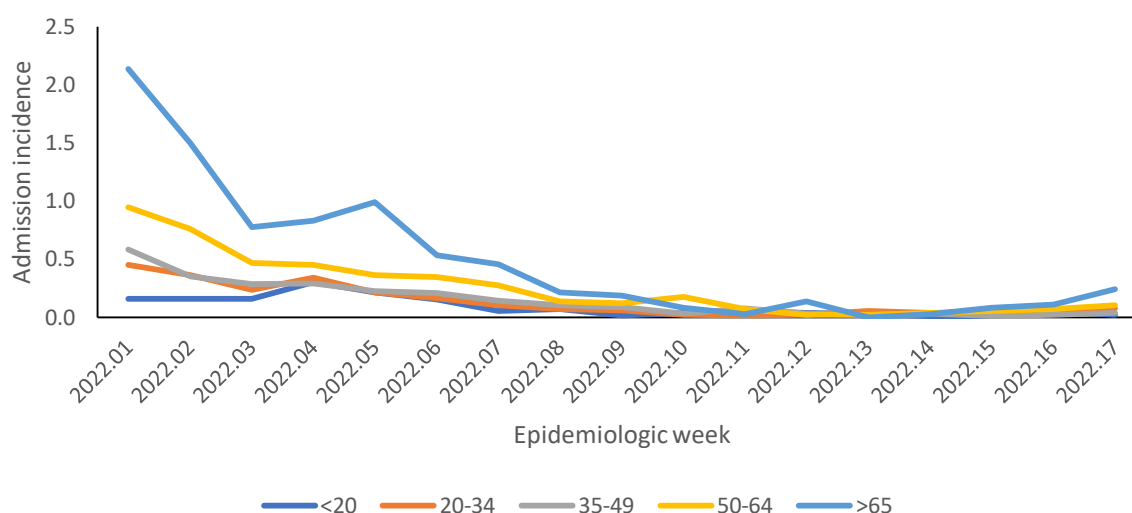


Figure 27a: Incidence risk of COVID-19 admissions per 100,000 persons, by age group (years) and epidemiologic week of diagnosis, Limpopo, week 1-17 2022

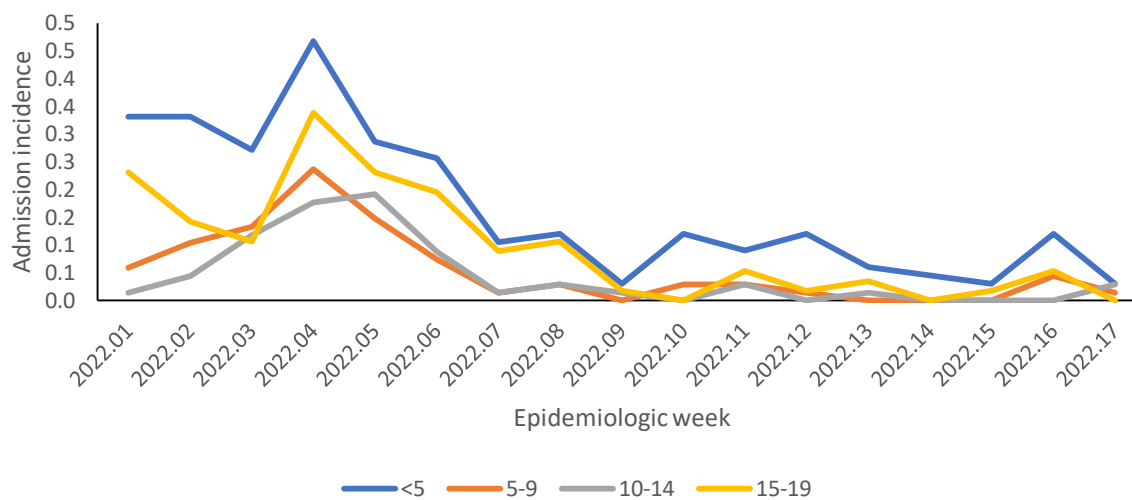


Figure 27b: Incidence risk of COVID-19 admissions per 100,000 persons, among children <20 years, by age group (years) and epidemiologic week of diagnosis, Limpopo, week 1-17 2022

Mpumalanga

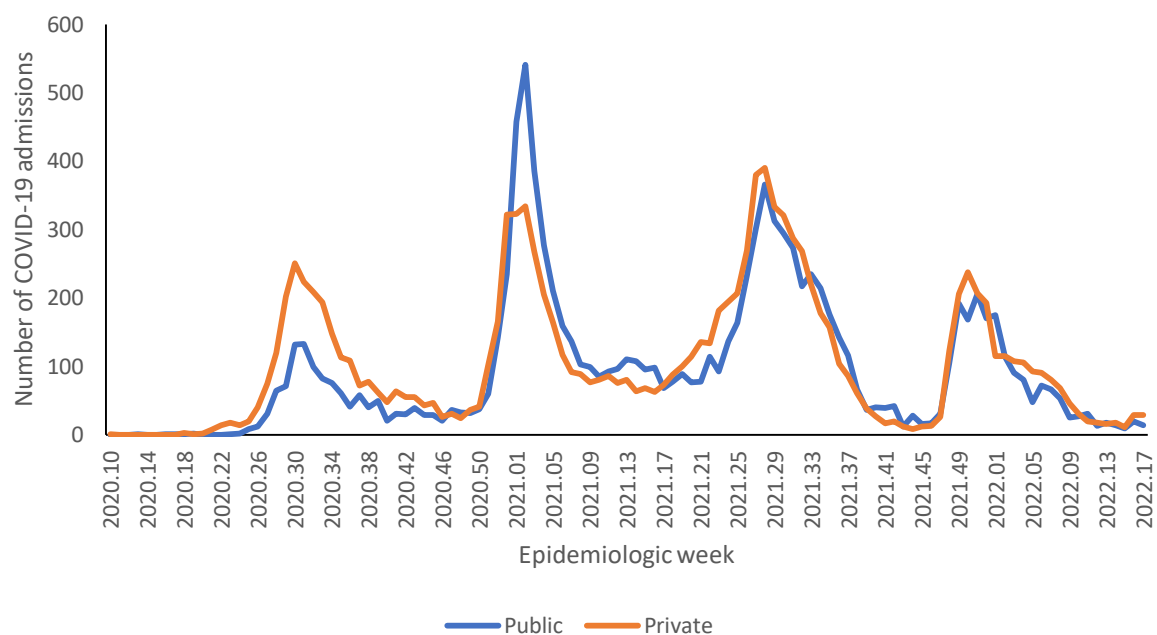


Figure 28: Number of reported COVID-19 admissions by health sector and epidemiologic week of diagnosis, Mpumalanga, 5 March 2020-30 April 2022, N=22,228

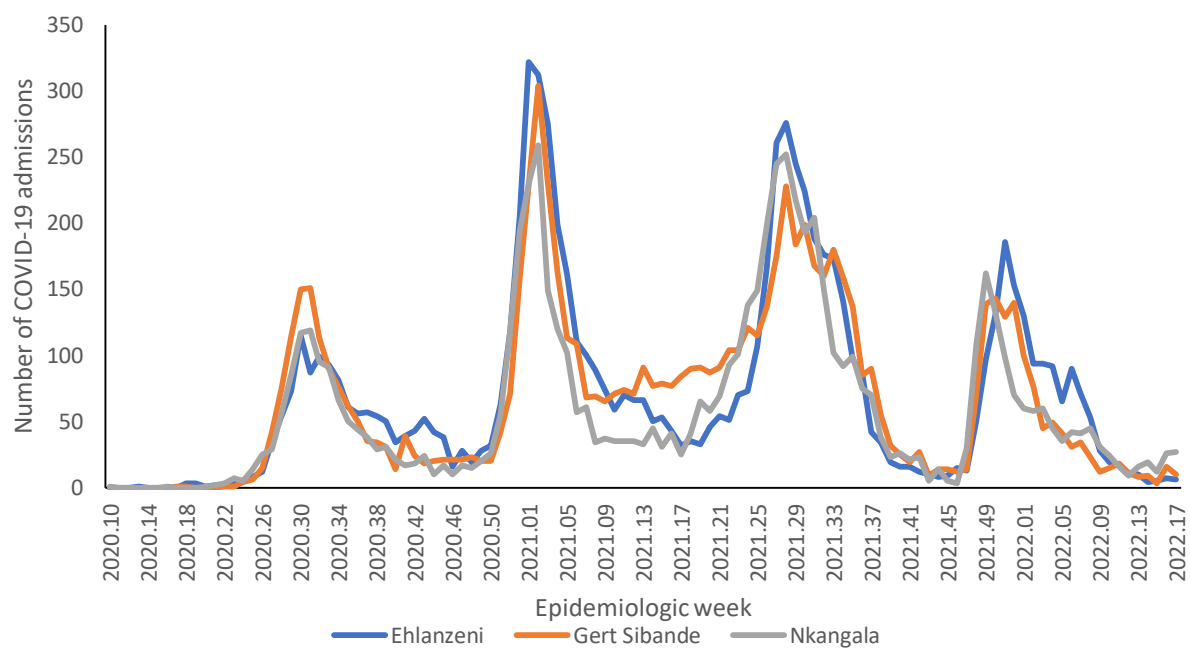


Figure 29: Number of reported COVID-19 admissions, by district and epidemiologic week, Mpumalanga, 5 March 2020-30 April 2022, N=22,228

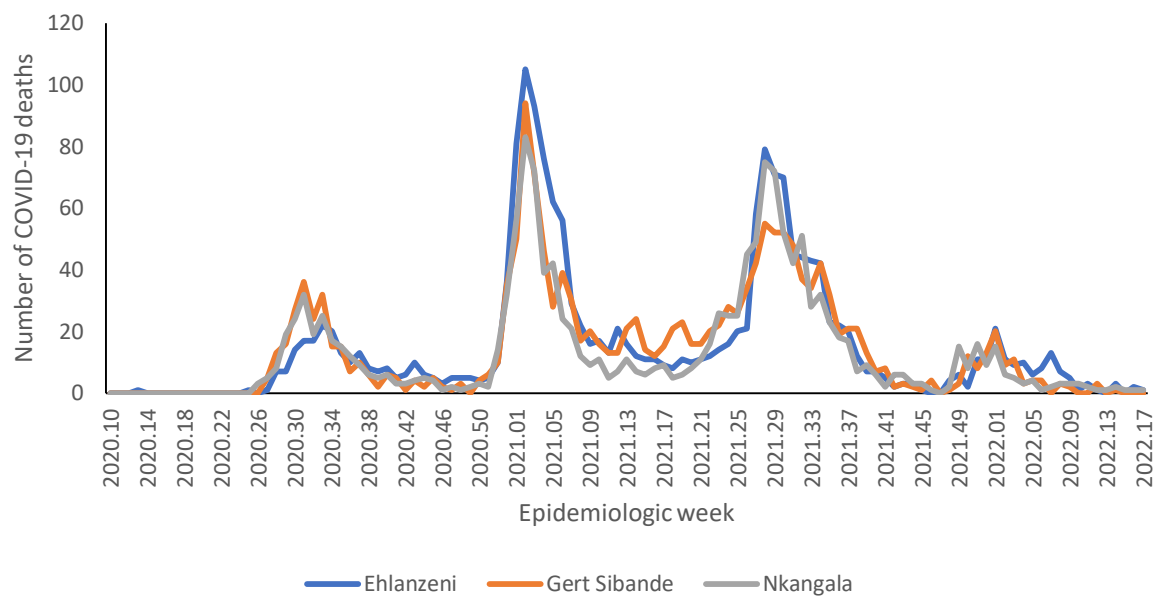


Figure 30: Number of reported COVID-19 in-hospital deaths, by district and epidemiologic week, Mpumalanga, 5 March 2020-30 April 2022, N=4,825

Table 10: Previous 14 days and current 14 days average COVID-19 admissions and deaths and percentage changes, Mpumalanga, 02 April-30 April 2022.

District	Previous 14 days admissions average	Current 14 days admissions average	Percentage change in admissions	Previous 14 days deaths average	Current 14 days deaths average	Percentage change in deaths
Ehlanzeni	0.64	0.93	44.44	0.21	0.21	0.00
Gert Sibande	0.86	1.86	116.67	0.07	0.00	-100.00
Nkangala	2.21	3.79	70.97	0.21	0.14	-33.33

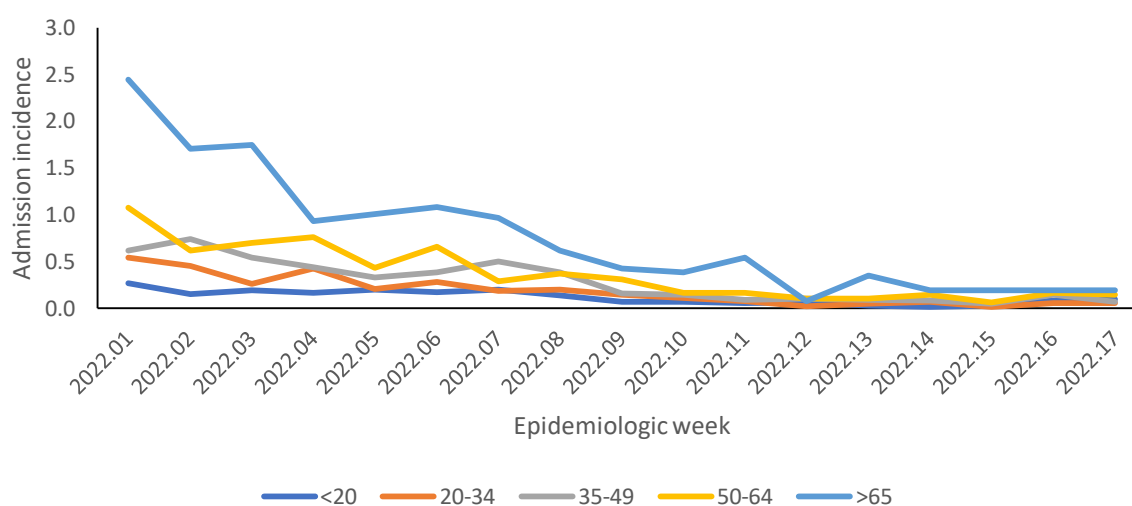


Figure 31a: Incidence risk of COVID-19 admissions per 100,000 persons, by age group (years) and epidemiologic week of diagnosis, Mpumalanga, week 1-17 2022

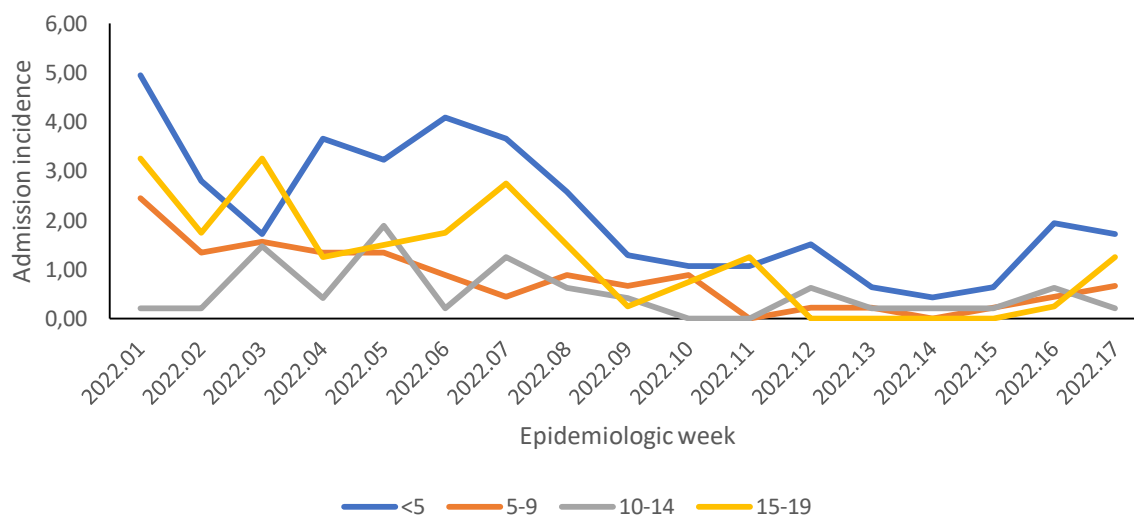


Figure 31b: Incidence risk of COVID-19 admissions per 100,000 persons, among children <20 years, by age group (years) and epidemiologic week of diagnosis, Mpumalanga, week 1-17 2022

North West

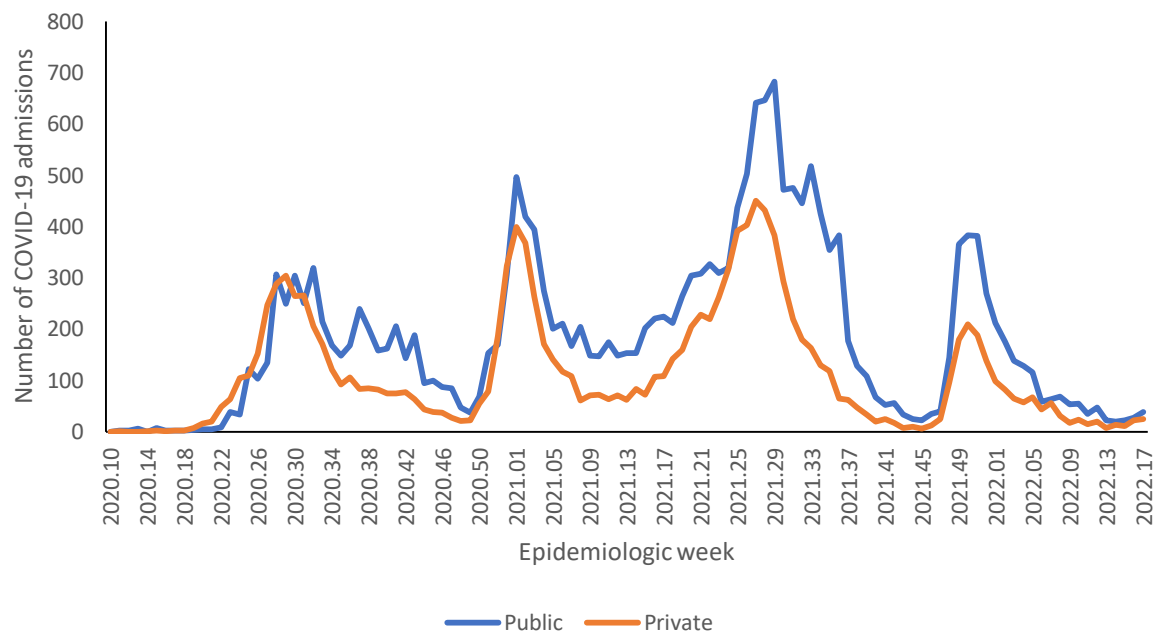


Figure 32: Number of reported COVID-19 admissions by health sector and epidemiologic week of diagnosis, North West, 5 March 2020-30 April 2022, N=33,388

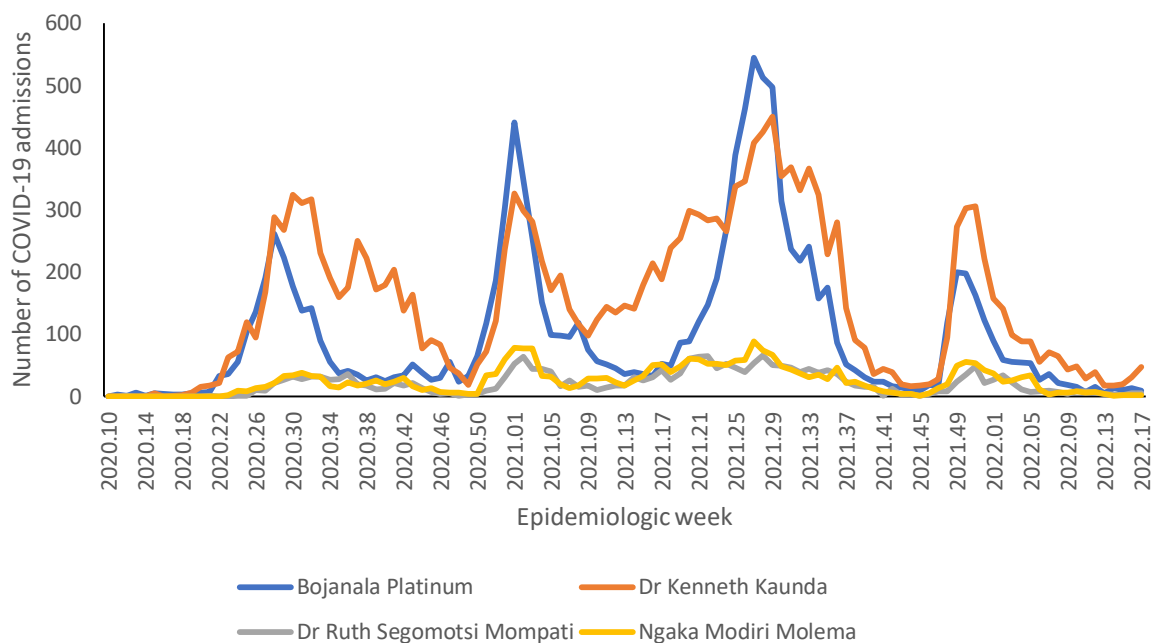


Figure 33: Number of reported COVID-19 admissions, by district and epidemiologic week, North West, 5 March 2020-30 April 2022, N=33,388

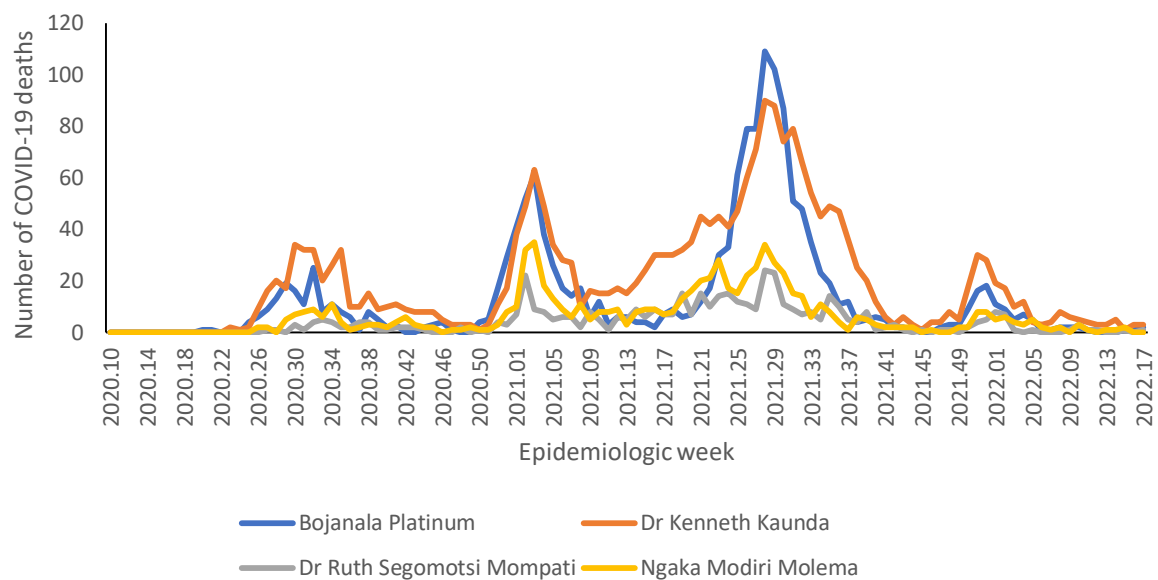


Figure 34: Number of reported COVID-19 in-hospital deaths, by district and epidemiologic week, North West, 5 March 2020-30 April 2022, N=4,884

Table 11: Previous 14 days and current 14 days average COVID-19 admissions and deaths and percentage changes, North West, 02 April-30 April 2022.

District	Previous 14 days admissions average	Current 14 days admissions average	Percentage change in admissions	Previous 14 days deaths average	Current 14 days deaths average	Percentage change in deaths
Bojanala Platinum	1.64	1.57	-4.35	0.07	0.21	200.00
Dr Kenneth Kaunda	2.64	5.57	110.81	0.43	0.43	0.00
Dr Ruth Segomotsi Mompati	0.36	0.71	100.00	0.07	0.07	0.00
Ngaka Modiri Molema	0.21	0.29	33.33	0.21	0.00	-100.00

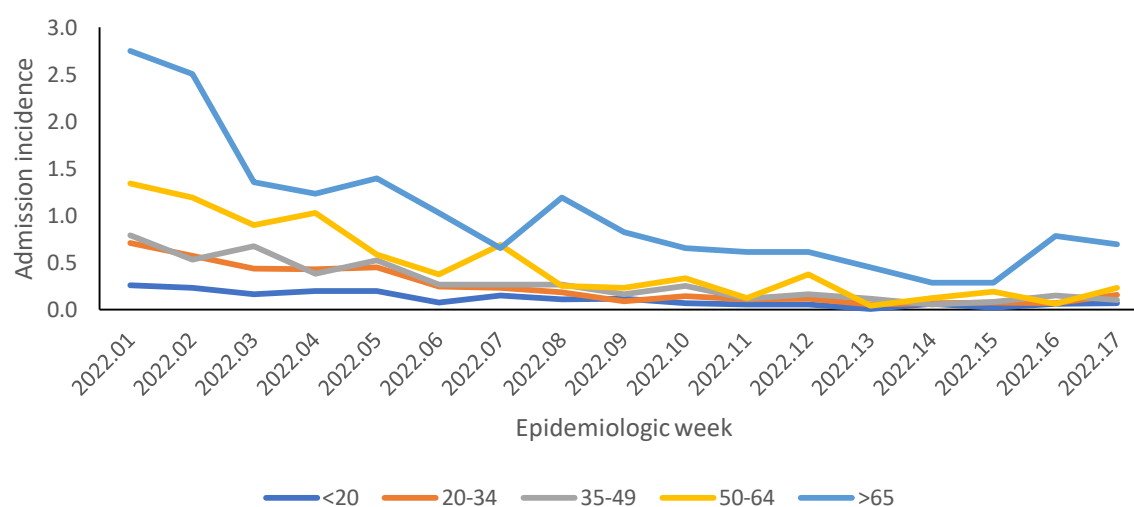


Figure 35a: Incidence risk of COVID-19 admissions per 100,000 persons, by age group (years) and epidemic week of diagnosis, North West, week 1-17 2022

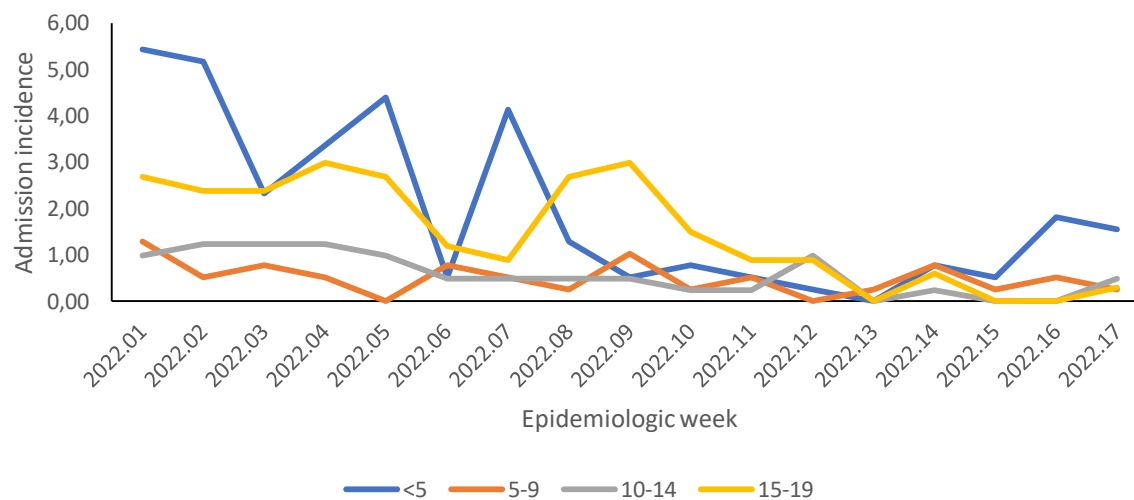


Figure 35b: Incidence risk of COVID-19 admissions per 100,000 persons, among children <20 years, by age group (years) and epidemiologic week of diagnosis, North West, week 1-17 2022

Northern Cape

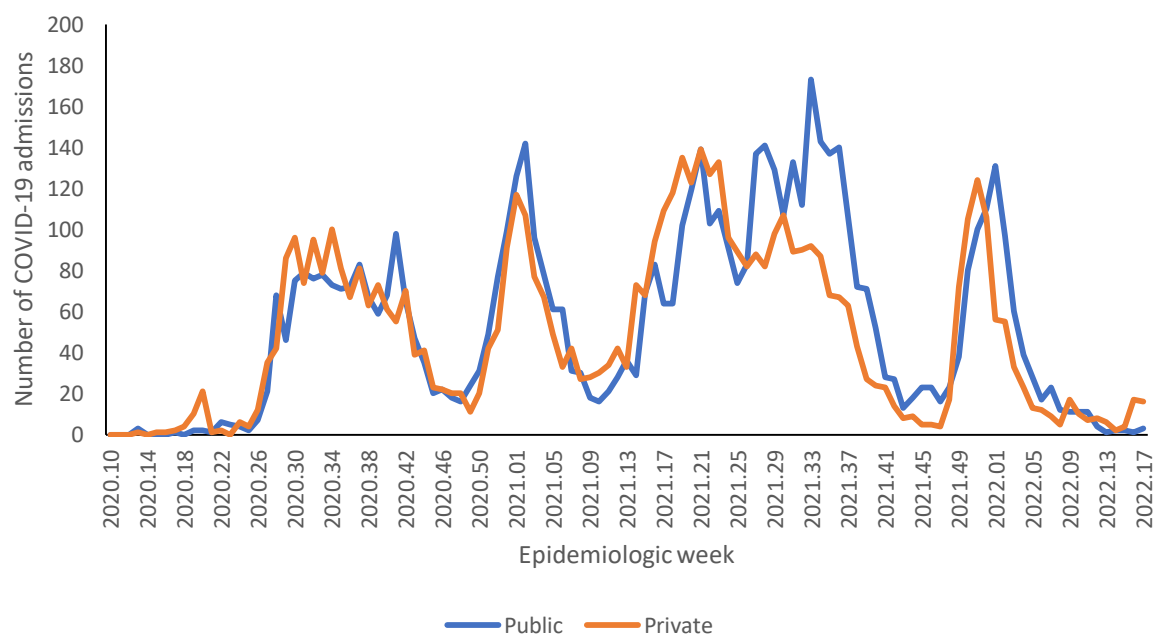


Figure 36: Number of reported COVID-19 admissions by health sector and epidemiologic week of diagnosis, Northern Cape, 5 March 2020-30 April 2022, N=11,525

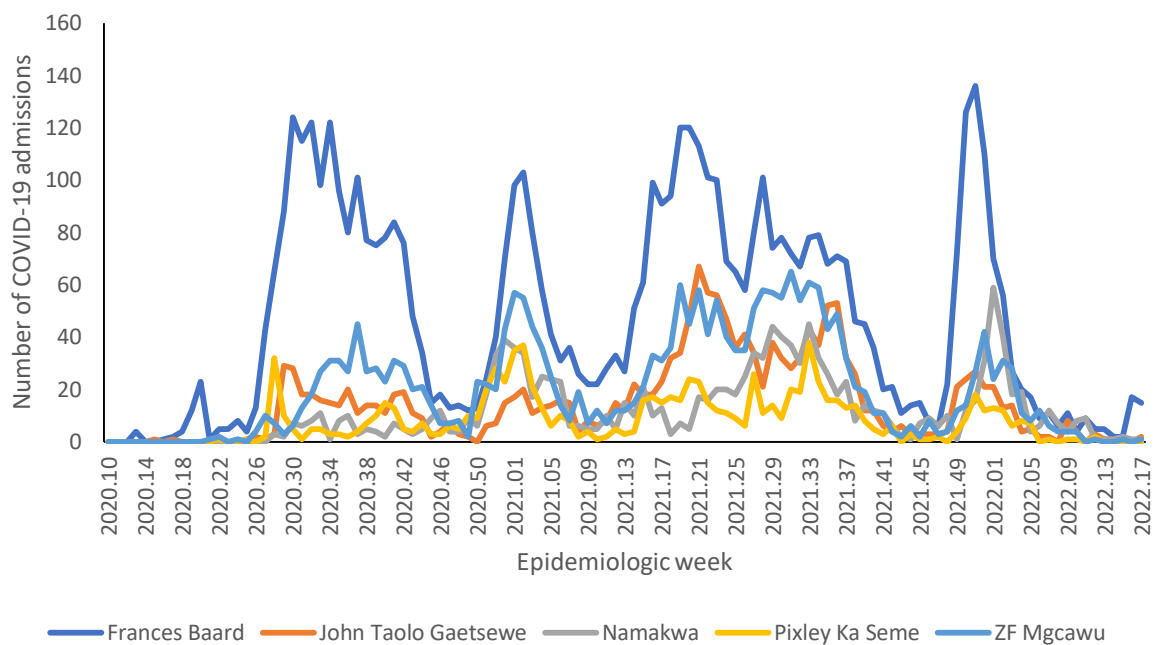


Figure 37: Number of reported COVID-19 admissions by district and epidemiologic week, Northern Cape, 5 March 2020-30 April 2022, N=11,525

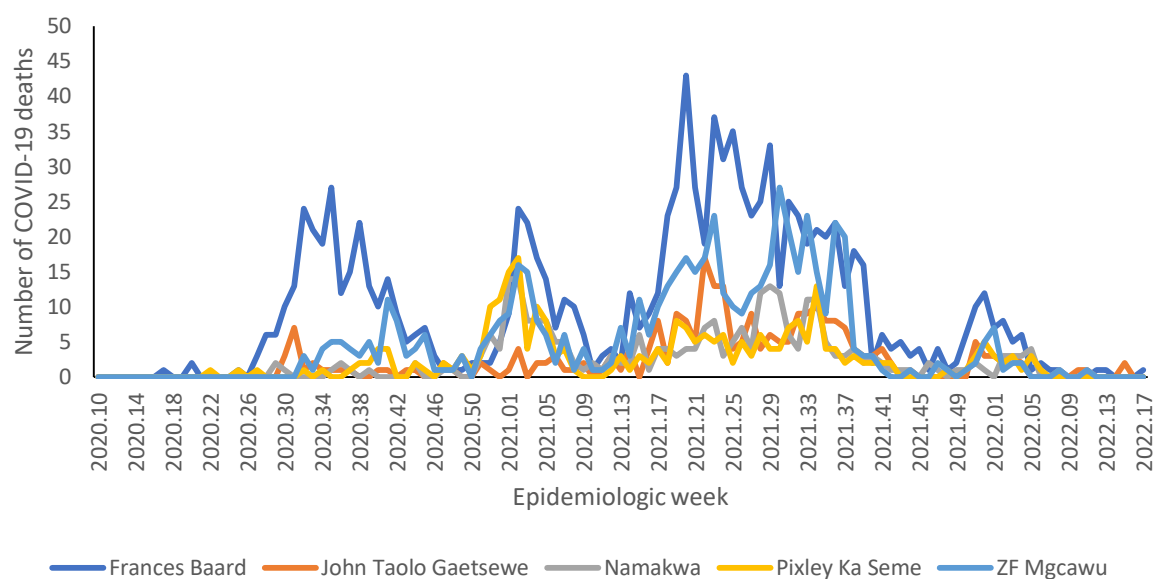


Figure 38: Number of reported COVID-19 in-hospital deaths, by district and epidemiologic week, Northern Cape, 5 March 2020-30 April 2022, N=2,428

Table 12: Previous 14 days and current 14 days average COVID-19 admissions and deaths and percentage changes, Northern Cape, 02 April-30 April 2022.

District	Previous 14 days admissions average	Current 14 days admissions average	Percentage change in admissions	Previous 14 days deaths average	Current 14 days deaths average	Percentage change in deaths
Frances Baard	0.29	2.29	700.00	0.00	0.07	0.00
John Taolo Gaetsewe	0.14	0.14	0.00	0.14	0.00	-100.00
Namakwa	0.14	0.14	0.00	0.00	0.00	0.00
Pixley Ka Seme	0.00	0.00	0.00	0.00	0.00	0.00
ZF Mgcawu	0.07	0.07	0.00	0.00	0.00	0.00

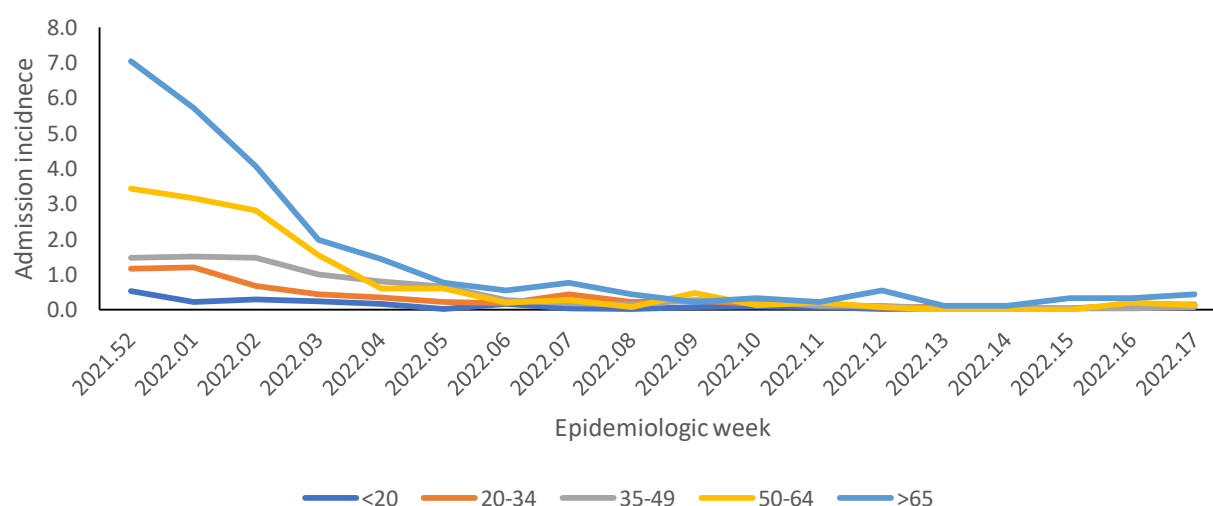


Figure 39a: Incidence risk of COVID-19 admissions per 100,000 persons, by age group (years) and epidemiologic week of diagnosis, Northern Cape, week 1-17 2022

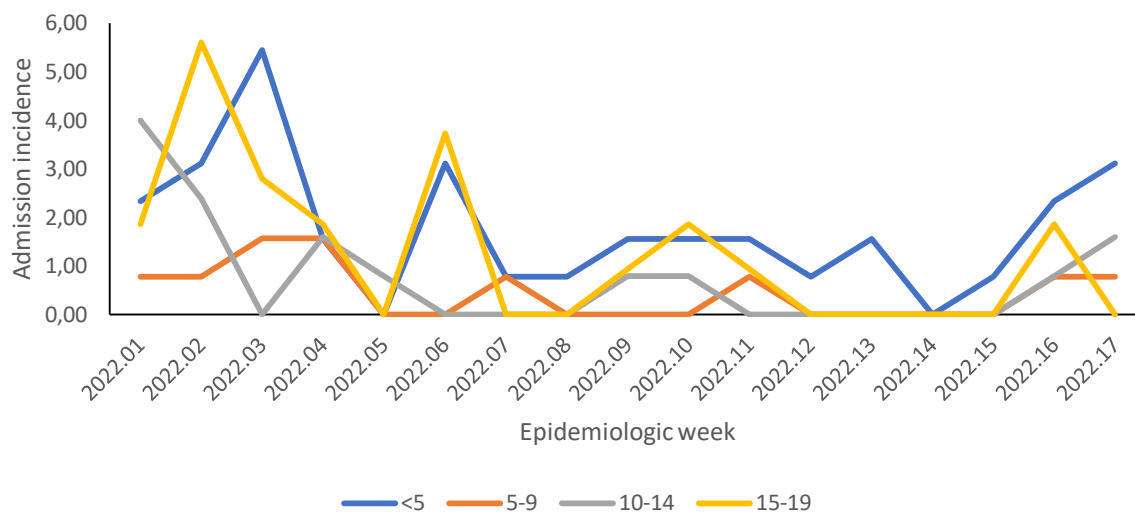


Figure 39b: Incidence risk of COVID-19 admissions per 100,000 persons, among children <20 years, by age group (years) and epidemiologic week of diagnosis, Northern Cape, week 1-17 2022

Western Cape

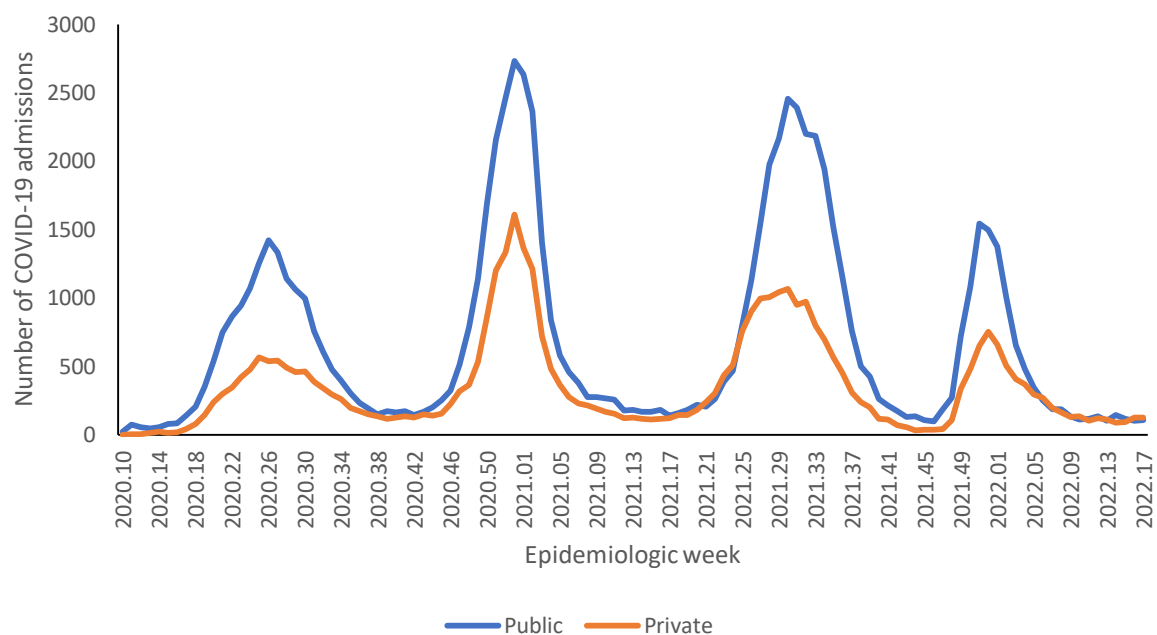


Figure 40: Number of reported COVID-19 admissions by health sector and epidemiologic week of diagnosis, Western Cape, 5 March 2020-30 April 2022, N=116,665

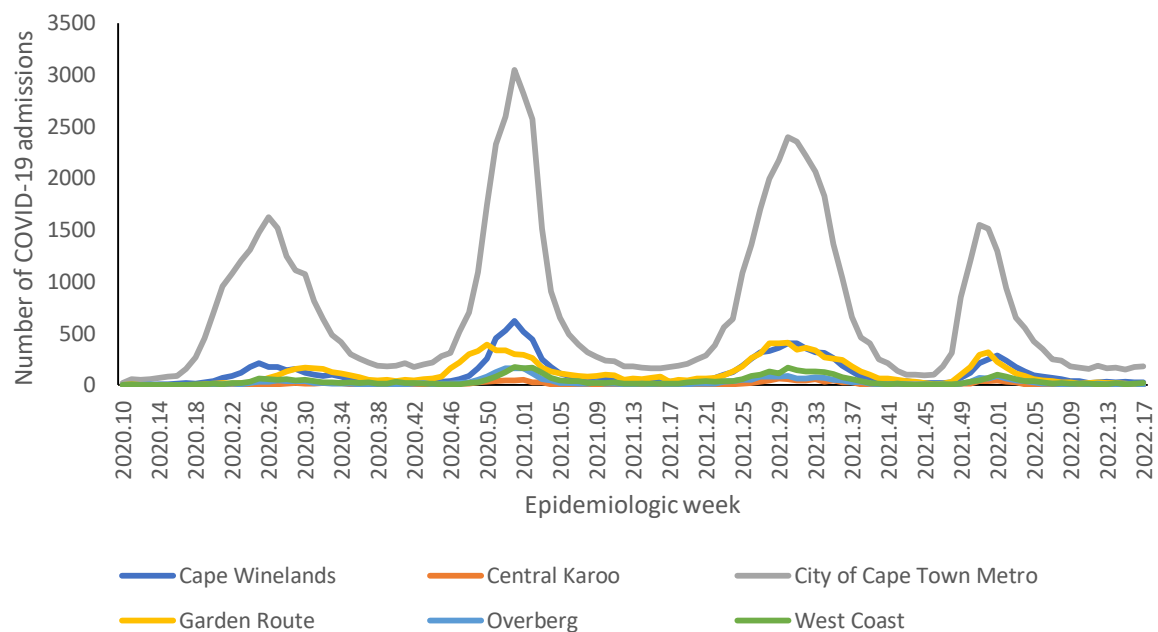


Figure 41: Number of reported COVID-19 admissions, by district and epidemiologic week, Western Cape, 5 March 2020-30 April 2022, N=116,665

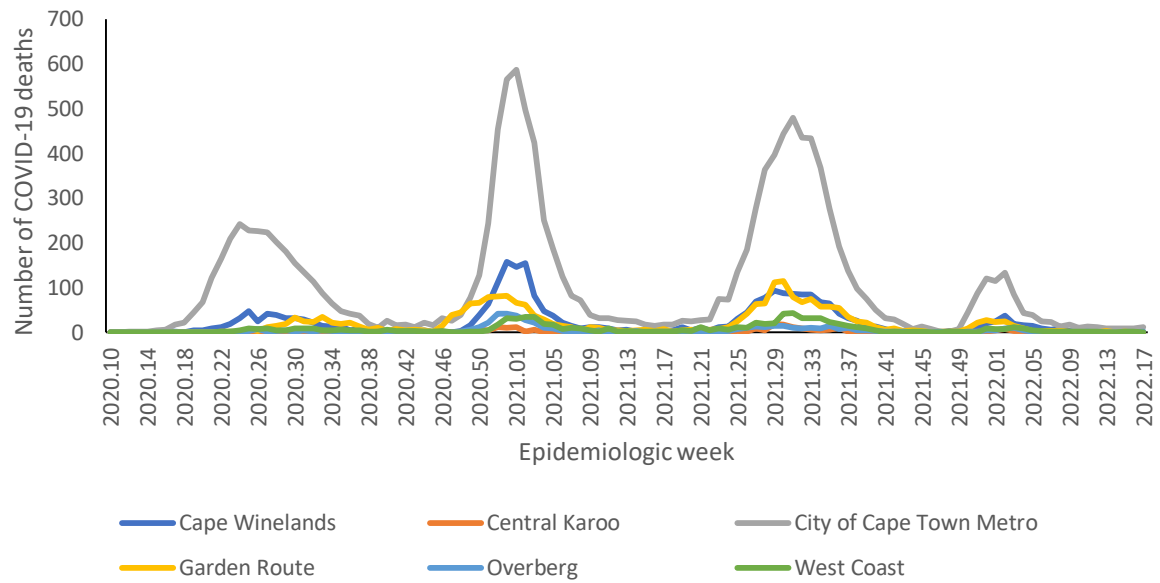


Figure 42: Number of reported COVID-19 in-hospital deaths, by district and epidemiologic week, Western Cape, 5 March 2020-30 April 2022, N=18,606

Table 13: Previous 14 days and current 14 days average COVID-19 admissions and deaths and percentage changes, Western Cape, 02 April-30 April 2022.

District	Previous 14 days admissions average	Current 14 days admissions average	Percentage change in admissions	Previous 14 days deaths average	Current 14 days deaths average	Percentage change in deaths
Cape Winelands	4.00	3.71	-7.14	0.57	0.29	-50.00
Central Karoo	0.00	0.00	0.00	0.00	0.00	0.00
City of Cape Town Metro	22.71	25.14	10.69	1.29	1.43	11.11
Garden Route	2.21	1.57	-29.03	0.07	0.00	-100.00
Overberg	0.86	0.93	8.33	0.00	0.07	0.00
West Coast	1.93	1.93	0.00	0.07	0.07	0.00

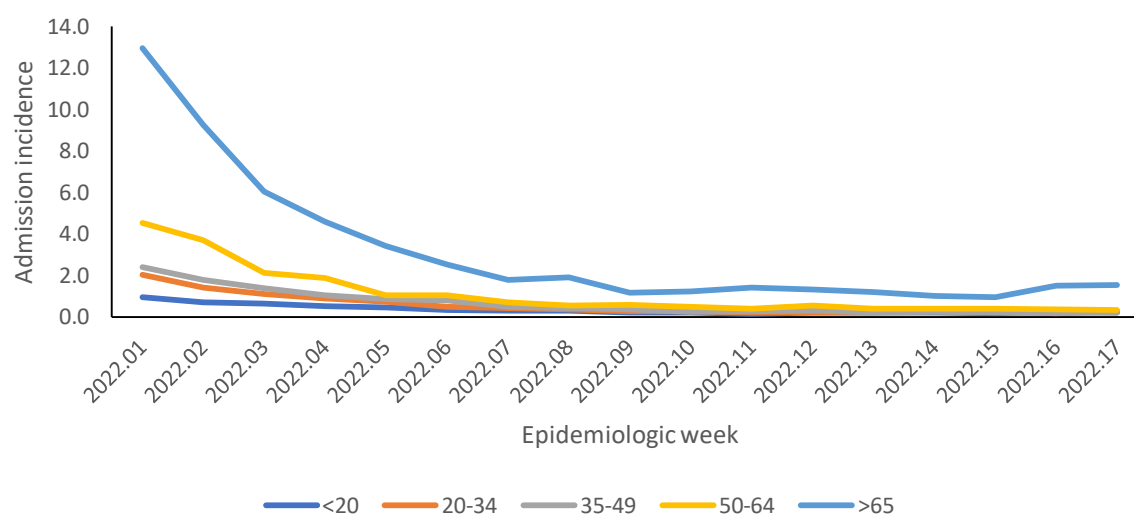


Figure 43a: Incidence risk of COVID-19 admissions per 100,000 persons, by age group (years) and epidemiologic week of diagnosis, Western Cape, week 1-17 2022

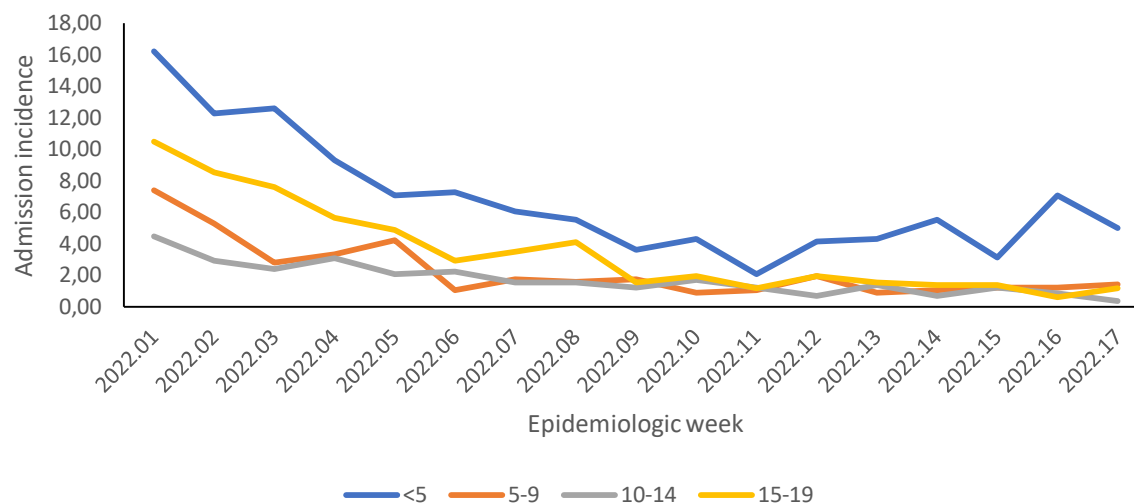


Figure 43b: Incidence risk of COVID-19 admissions per 100,000 persons, among children <20 years, by age group (years) and epidemiologic week of diagnosis, Western Cape, week 1-17 2022

Limitation

DATCOV now includes reporting from all hospitals with COVID-19 admissions but many hospitals are yet to reach complete submission of historic data. Data quality in a surveillance system is dependent on the information submitted by healthcare institutions. It is not possible for the NICD to verify or check the quality of all these data, however, the NICD has built-in data quality checks. Delays in reporting of admissions and deaths may affect the numbers reported in the most recent week. The National Department of Health have recruited data capturers to support hospitals to improve data submission.

As hospitals reached capacity, admission criteria may change and therefore influence trends and inferences about the progression of the epidemic. DATCOV only reports hospital-based admissions and deaths and therefore does not include deaths occurring outside hospitals. DATCOV now has a module to record out-of-hospital deaths.

Severity data has some inherent limitations. We rely on a proxy indicator for severity and do not have clinical or laboratory parameters to ascertain clinical severity. In the early and late phases of the wave there is likely to be lower severity due to there being sufficient hospital capacity. It may take a few weeks for hospitalisation outcomes to accumulate. Early reporting on case fatality ratio is also biased particularly in older adults who may have longer admissions and are more likely to die.

Acknowledgements

All public and private sector hospitals submitting data to DATCOV

Private hospital groups submitting data to DATCOV:

- Netcare
- Life Healthcare
- Mediclinic Southern Africa
- National Hospital Network (NHN)
- Clinix Health Group
- Lenmed
- Joint Medical Holdings (JMH)

Appendix

Table 14: Percentage incidence change in hospital admissions over 14 days, by district, South Africa, 16 April-30 April 2022.

Province	District	Total admissions	Incidence (per 100k)	New admissions	New admissions incidence (per 100k)	% average change (14 days)
Eastern Cape	Alfred Nzo	2682	325.28	1	0.12	-50.00
	Amathole	3270	417.86	2	0.26	0.00
	Buffalo City Metro	10510	1327.87	13	1.64	0.00
	Chris Hani	5168	725.27	7	0.98	40.00
	Joe Gqabi	1179	343.81	0	0.00	-100.00
	Nelson Mandela Bay Metro	16368	1356.77	25	2.07	47.06
	O R Tambo	4951	322.84	5	0.33	-28.57
	Sarah Baartman	3317	687.37	8	1.66	166.67
Free State	Fezile Dabi	3670	717.43	28	5.47	211.11
	Lejweleputswa	6414	981.96	18	2.76	-10.00
	Mangaung Metro	14692	1676.44	44	5.02	46.67
	Thabo Mofutsanyana	5654	739.78	18	2.36	157.14
	Xhariep	712	560.44	0	0.00	100.00
Gauteng	City of Johannesburg Metro	53859	895.68	233	3.87	0.43
	City of Tshwane Metro	42306	1107.38	293	7.67	0.34
	Ekurhuleni Metro	32964	814.65	138	3.41	5.34
	Sedibeng	9761	1002.14	45	4.62	21.62
	West Rand	13278	1388.31	39	4.08	-4.88
KwaZulu-Natal	Amajuba	4661	822.04	9	1.59	12.50
	eThekweni Metro	38892	969.97	275	6.86	-11.00
	Harry Gwala	2710	535.43	4	0.79	100.00
	iLembe	3014	433.22	5	0.72	-28.57
	King Cetshwayo	9428	988.13	14	1.47	-30.00
	Ugu	5723	711.42	13	1.62	-31.58
	uMgungundlovu	11431	1002.79	29	2.54	-21.62
	uMkhanyakude	1492	216.86	0	0.00	100.00
	Umzinyathi	2317	410.75	5	0.89	25.00
	UThukela	3147	449.33	8	1.14	-27.27
	Zululand	2453	277.43	5	0.57	25.00
Limpopo	Capricorn	8617	649.39	7	0.53	0.00
	Mopani	3774	313.80	3	0.25	-40.00
	Sekhukhune	2111	173.51	12	0.99	140.00
	Vhembe	3036	212.26	4	0.28	0.00

	Waterberg	3274	436.44	10	1.33	0.00
Mpumalanga	Ehlanzeni	7905	432.35	6	0.33	-14.29
	Gert Sibande	7587	598.40	10	0.79	-44.44
	Nkangala	6736	408.91	28	1.70	7.69
North West	Bojanala Platinum	11246	577.26	9	0.46	-30.77
	Dr Kenneth Kaunda	17041	2121.37	51	6.35	50.00
	Dr Ruth Segomotsi Mompoti	2315	496.23	6	1.29	20.00
	Ngaka Modiri Molema	2786	307.89	2	0.22	0.00
Northern Cape	Frances Baard	5385	1294.56	16	3.85	-5.88
	John Taolo Gaetsewe	1637	592.35	2	0.72	100.00
	Namakwa	1323	1130.86	3	2.56	200.00
	Pixley Ka Seme	916	435.33	0	0.00	100.00
	ZF Mgcawu	2268	800.53	2	0.71	100.00
Western Cape	Cape Winelands	13276	1388.97	39	4.08	2.63
	Central Karoo	1371	1808.90	0	0.00	100.00
	City of Cape Town Metro	81517	1742.23	230	4.92	-5.74
	Garden Route	12987	2067.19	16	2.55	60.00
	Overberg	3213	1051.62	4	1.31	-71.43
	West Coast	4397	936.54	22	4.69	29.41

Table 15: Number of reported COVID-19 admissions and in-hospital deaths by age and gender, South Africa, 5 March 2020-30 April 2022.

	ADMISSIONS				DEATHS			
Age Group (Years)	Female	Male	Unknown	Total	Female	Male	Unknown	Total
0-4	6378	8063	39	14480	176	197	2	375
5-9	1830	2410	8	4248	30	32	0	62
10-14	2531	2608	10	5149	65	65	0	130
15-19	7004	3919	6	10929	152	133	0	285
20-24	10847	5415	10	16272	345	265	1	611
25-29	17160	7690	16	24866	740	509	1	1250
30-34	21993	12248	12	34253	1270	1086	1	2357
35-39	22677	16083	21	38781	1815	1710	4	3529
40-44	20106	17800	16	37922	2235	2307	1	4543
45-49	22198	21787	12	43997	3207	3393	1	6601
50-54	25712	24089	10	49811	4357	4511	2	8870
55-59	28592	26072	15	54679	6168	6193	5	12366
60-64	25332	23225	20	48577	6632	6833	6	13471
65-69	21899	19516	17	41432	6862	6417	6	13285
70-74	18699	16444	19	35162	6105	5934	4	12043
75-79	14075	11569	9	25653	4836	4515	3	9354
80-84	10727	7548	8	18283	3955	3082	3	7040
85-89	5832	3622	2	9456	2215	1622	0	3837
90-94	2563	1261	1	3825	1084	618	0	1702
>=95	789	372	3	1164	358	157	0	515
Unknown	887	690	48	1625	48	45	0	93
Total	287831	232431	302	520564	52655	49624	40	102319

