

WASTEWATER-BASED EPIDEMIOLOGY FOR SARS-CoV-2 SURVEILLANCE IN SOUTH AFRICA

Detection, quantitation and genomic sequencing at sentinel sites in South Africa, March 2021- July 2022 WEEK 28 2022

Co-funded by the Water Research Commission, the Bill and Melinda Gates Foundation and the NICD

Chinwe Iwu-Jaja^{1*}, Setshaba Taukobong^{1*}, Said Rachida¹, Nkosenhle Ndlovu¹, Wayne Howard¹, Shelina Moonsamy¹, [named CRDM authors] Gina Pocock³, Leanne Coetzee³, Janet Mans⁴, Lisa Schaefer⁵, Wouter J. Le Roux⁵, Annancietar Gomba⁶, Don Jambo⁶, David Moriah de Villiers⁷, Nadine Lee Lepart⁷, Shaun Groenink⁸, Neil Madgwick⁹, Martie van der Walt¹⁰, Awelani Mutshembele¹⁰, Leanne Pillay¹¹, Faizal Bux¹¹, Isaac Dennis Amoah¹¹, Natacha Berkowitz¹², Jay Bhagwan¹², Melinda Suchard^{1,14}, Kerrigan McCarthy^{#1,15}, Mukhlid Yousif^{#1,16} for the South African Collaborative COVID-19 Environmental Surveillance System (SACCESS) network.

¹Centre for Vaccines and Immunology, National Institute for Communicable Diseases, a division of the National Health Laboratory Service, South Africa

³Waterlab, (Pty) Ltd, Pretoria

⁴Department of Medical Virology, University of Pretoria

⁵Water Centre, Council for Scientific and Industrial Research (CSIR), Pretoria

⁶National Institute for Occupational Health, a division of the National Health Laboratory Service, Johannesburg

⁷Lumegen Laboratories, (Pty) Ltd, Potchefstroom

⁸Greenhill Laboratories

⁹Praecautio

¹⁰Tuberculosis Platform, South African Medical Research Council, Pretoria.

¹¹Institute of Wastewater Management, Durban University of Technology

¹²City of Cape Town Health Department

¹³Water Research Commission, Pretoria

¹⁴Department of Chemical Pathology, School of Pathology, University of the Witwatersrand, Johannesburg

¹⁵School of Public Health, University of the Witwatersrand, Johannesburg

¹⁶Department of Virology, School of Pathology, University of the Witwatersrand, Johannesburg

*joint first authors

#joint last authors

OVERVIEW

This report summarises and interprets findings from detection, quantification and sequencing of SARS-CoV-2 by the National Institute for Communicable Diseases (NICD) Centre for Vaccines and Immunology from influent (untreated) wastewater in 17 wastewater treatment plants (WWTPs) across five South African provinces. The results obtained and interpretations analysis of levels of SARS-CoV-2 in WWTP from 70 additional plants across South Africa were tested by SACCESS partners: the National Institute for Occupational Health (NIOH), Lumegen Laboratories, GreenHill Laboratories, SAMRC-TB Platform (until March 2022) and Praecautio to cover all provinces in South Africa. Levels of SARS-CoV-2 in wastewater correlate with population levels of SARS-CoV-2 over time and indicate the geographic distribution of disease. Variants of SARS-CoV-2 can be identified in wastewater through detection of single-nucleotide polymorphisms (SNPs) that are specific to each variant. These variants are shown to correspond to variants prevalent in clinical cases, across time and place. SARS-CoV-2 is shed from symptomatic and asymptomatic persons in stool but is not transmitted by faecal-oral route nor via wastewater. This report is based on data collected from June 2021 until 12th July 2022 (Epidemiological week 28). Results from wastewater testing should be read and interpreted together with testing and genomic reports generated by the Centre for Respiratory Diseases and Meningitis found at <https://www.nicd.ac.za/diseases-a-z-index/disease-index-covid-19/surveillance-reports/>

- Part 1 of this report presents methods and results of quantitative testing of wastewater.
- Part 2 of this report presents methods and results from sequencing of SARS-CoV-2 RNA fragments in wastewater.

Generally, SARS-CoV-2 in wastewater have declined in majority of our wastewater treatment plants across the country, while the clinical cases continue to decline. Omicron variant and its sub-lineages are present in wastewater across the country. Detailed analyses are described below.

HIGHLIGHTS - week ending 12th July 2022 (Epi week 28)

SARS-CoV-2 levels in wastewater:

- While most areas with recent results show low circulating levels of SARS-CoV-2, others show high levels. These low levels are seen in Tshwane South (Daspoort and Sunderland Ridge WWTPs) and Johannesburg (Goudkopies WWTP). In contrast, stable high levels are observed at Tshwane North (Rooiwal WWTP), Ekurhuleni East (Jan Smuts WWTP), and Ekurhuleni North (Hartebeesfontein WWTP)
- The public can view SARS-CoV-2 levels from our wastewater treatment facilities across all the provinces on our dashboard. To view the dashboard, click here <https://wastewater.nicd.ac.za/>

SARS-CoV-2 genomics in wastewater:

Sequencing data available up to week 27 showed the presence of Omicron variant in all samples across South Africa with evidence of the new Omicron sub-variant BA.4/5 present in Gauteng, eThekweni, Eastern Cape, Western Cape and the Free State. Whilst some mutations associated with the Delta and C.1.2 variants were also present, the significance of these remains unclear



PART 1: Detection and quantification of SARS-CoV-2 in wastewater

Background

The detection and monitoring of SARS-CoV-2 through wastewater was first proposed in April 2020. Initial reports describing the feasibility and practical usefulness of this approach emerged simultaneously from several countries during August 2020. Recent evidence has shown that SARS-CoV-2 can be detected in wastewater prior to the appearance of clinical cases, and longitudinal tracking of SARS-CoV-2 viral load in wastewater correlates with the burden of clinically diagnosed cases. Furthermore, the sequencing of SARS-CoV-2 RNA fragments in wastewater has identified variants of concern as well as mutations not detected in clinical cases.

In South Africa, SARS-CoV-2 epidemiology is monitored through laboratory testing of clinical cases using reverse-transcriptase polymerase chain reaction (RT-PCR) tests and rapid antigen tests, COVID-19 hospital admissions and COVID-19 - related deaths. Laboratory testing data is sent by testing laboratories to the National Institute for Communicable Diseases (NICD) via the DATCOV system. From these data sources, epidemiological indicators including incidence rates of testing and case detection, hospitalisation and death rates are made available to key stakeholders and the general public.

Clinical epidemiology based on reporting of laboratory-confirmed cases of SARS-CoV-2 has limitations. Household transmission studies in South African urban and rural settings have demonstrated that a large proportion of cases are asymptomatic or so mild as not to elicit health-seeking, and that laboratory-confirmed cases likely represent less than 10% of SARS-CoV-2 cases prevalent in a community at any given time. Secondly, there is increasing use of rapid antigen detection tests in clinical settings. Results of these tests may not be reported to surveillance networks. Consequently, laboratory diagnosis is increasingly less representative of the burden of disease.

In November 2020, a network of testing laboratories, which became known as the South African Collaborative COVID-19 Environmental Surveillance System (SACCESS) network, was established in order to support the development of a common testing methodology, identify and address challenges, and share best practices related to qualitative, quantitative and sequencing of SARS-CoV-2 in wastewater. Treatment of wastewater in South Africa is the responsibility of local government. Approximately 1050 wastewater treatment works (WWTPs) are administered by metropolitan councils and local government and treat industrial and domestic waste. SACCESS partners and the NICD have engaged with local government to support sample collection, interpretation and utilisation of the results for public health purposes.

The SACCESS network aims to detect and quantify SARS-CoV-2 in wastewater in urban settings in South Africa, to compare trends, temporal and geographic distribution of SARS-CoV-2 levels in wastewater with trends in clinical epidemiology so as to support the use of wastewater-based epidemiology for COVID-19 outbreak prevention and response activities.

Methods

Outbreak context and clinical case epidemiology

Since the first case of SARS-CoV-2 in South Africa was detected on 3rd March 2020, laboratories in the country have conducted **over 25 million RT-PCR and antigen tests**. Five distinct waves of SARS-CoV-2 infection have occurred so far, peaking in June 2020, December 2020, July 2021, December 2021 and June 2022, respectively. The current de-duplicated and geospatially allocated national line list of laboratory-confirmed cases of SARS-CoV-2 (identified by RT-PCR or antigen test) is provided by the NICD for comparison with results from SARS-CoV-2 testing of wastewater.

Establishment of the laboratory testing network

Commencing in 2018, the NICD had been conducting testing of wastewater for poliovirus as part of the National Department of Health's polio surveillance programme. In 2020, the NICD commenced testing of influent wastewater samples from these 18 sites, including eight in Gauteng Province, two in the City of Cape Town (Western Cape Province), two in Mangaung (Free State Province), two in eThekweni (KwaZulu- Natal Province) and four in Eastern Cape Province (two in Buffalo City Metro and two in Nelson Mandela Metro). Quantitative testing results for these sites are available from week 8 of 2021, onwards.

Additional wastewater plants across all metropolitan areas as well as sentinel site plants in smaller provinces were included from February 2021. From August 2021, quantitative testing was conducted on all specimens submitted to partner laboratories for testing. Presently, samples from 87 WWTPs are being tested for SARS-CoV-2. The supplementary Table 1 at the bottom of the page shows all the data for these plants, including their geographical location, the surrounding suburbs, water service authority, the testing laboratory, and dates testing began in these sites.

SARS-CoV-2 detection and quantitation methodology

The general approach of SARS-CoV-2 detection in wastewater used at all network laboratories is virus concentration, followed by nucleic acid extraction and molecular detection. At the identified wastewater treatment facilities grab or passive samples of influent are collected and transported at <5°C to the testing facility. Table 1 summarises the sample collection, processing and detection methodology used by laboratories involved in the surveillance project. The levels of SARS-CoV-2 in wastewater are reported in copies/mL of wastewater. These values are log-transformed before constructing the graphs.

Table 1. Sampling and methodology used by laboratories involved in the NICD-WRC led COVID-19 wastewater surveillance project.

Name of laboratory	Sampling	Virus concentration	Nucleic acid extraction	Molecular analysis	Molecular analysis platform
National Institute for Communicable Diseases (NICD)	Grab	Ultrafiltration (Centricon® Plus-70 centrifugal ultra-filter device)	QIAamp® viral RNA mini kit	RT-qPCR ^a using the Allplex™ 2019-nCoV Assay and the EDX SARS-CoV-2 standard	7500 Real-Time PCR System (Applied Biosystems)
GreenHill Laboratories / Praecautio	Grab	Ultrafiltration (Amicon® Ultra-15 Centrifugal Filter Unit)	Omega Bio-Tek Mag-Bind® Viral DNA/RNA 96 Kit	RT-qPCR using the CDC 2019-Novel Coronavirus (2019-nCoV) Real-Time RT-PCR Diagnostic Panel	Rotor-Gene Q (Qiagen)
National Institute for Occupational Health (NIOH)	Grab	Skimmed milk flocculation	MagMAX Viral/Pathogen Nucleic Acid Isolation Kit	RT-qPCR using the TaqPath COVID-19 CE-IVD RT-PCR Kit (Thermo Fisher)	QuantStudio™ 5 Real-Time PCR System 96-well, 0.1 mL, desktop (Applied Biosystems)
Waterlab/University of Pretoria	Grab	Skimmed milk flocculation	QIAamp® Ultrasens® Virus kit	RT-qPCR using the Allplex™ 2019-nCoV Assay and the using the 2019_nCoV_N positive control plasmid (Integrated DNA Technologies, Inc, Coralville, IA)	QuantStudio™ 5 Real-Time PCR System (Applied Biosystems)
South African Medical Research Council – Tuberculosis	Grab	None – sample is centrifuged then	ZymoBiomics RNA Extraction Kit	RT-qPCR ^a using the Allplex™ 2019-nCoV	QuantStudio 5 (Applied Biosystems)

Platform (SAMRC-TB Platform)		supernatant analysed		Assay and the EDX SARS-CoV-2 standard	
Lumegen	Passive	Passive sampler and resuspension in phosphate buffered saline	MN DNA/RNA pathogen extraction Kit	RT-qPCR using the TaqPath COVID-19 CE-IVD RT-PCR Kit (Thermo Fisher)	QuantStudio 5 (Applied Biosystems)
Council for Scientific and Industrial Research (CSIR)	Grab	Polyethylene Glycol precipitation	Omega Bio-tek ENZA total RNA Kit II	RT-qPCR using the 2019-nCoV CDC EUA Kit	Qiagen Rotor-Gene 6000 (5-plex) (Qiagen)
Durban University of Technology – Institute of Wastewater Management	Grab	Ultrafiltration (Centricon® Plus-70 centrifugal ultra-filter device)	QIAamp® viral RNA mini kit	RT-ddPCR ^b using CDC 2019-nCoV_N2 Primers, Fam Labelled, double quenched probes	QX200 AutoDG Droplet Digital PCR System (Bio-rad)

Interpretation of SARS-CoV-2 levels in wastewater

Interpretation of SARS-CoV-2 wastewater levels is evolving. We have elected to use interpretive principles outlined in Table 2 to support public health preparedness and response activities. In general, increasing or decreasing trends in levels are reported based on two or more results, as a single sample that increases or decreases compared with the result from the previous week may represent an outlier. Small changes (up to 0.5 log copies/ml) are not regarded as significant changes unless they form part of a general upward or downward trend. Comparison of results over time when quantification is done by the same laboratory using the same quantitative methodology is meaningful. The use of different methodologies by different laboratories precludes comparison of quantitative results across laboratories.

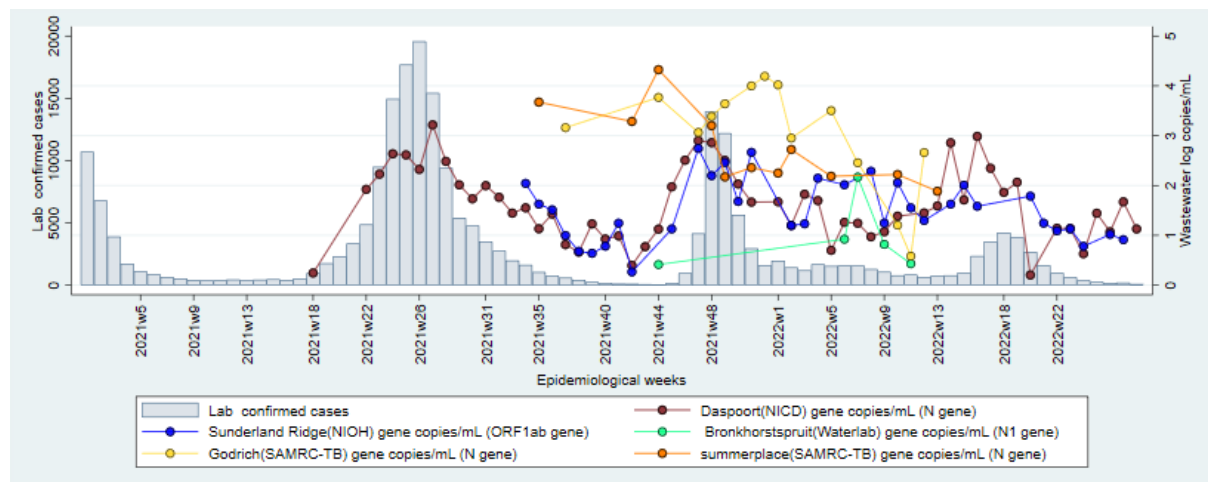
Table 2. Principles of SARS-CoV-2 detection and quantification on influent samples from wastewater treatment plants and interpretive principles to guide application of test results to support COVID-19 public health responses, South Africa.

Testing modality	Interpretive principles to support public health responses
Detection of SARS-CoV-2	<p>When a test result changes from</p> <ul style="list-style-type: none"> • positive to negative, this signifies fewer/no cases in population • negative to positive, this indicates the need for increased population awareness and action • Qualitative results (presence or absence) are comparable between laboratories
Quantification of SARS-CoV-2	<ul style="list-style-type: none"> • The concentration of SARS-CoV-2 at a particular facility may be used to infer the burden of SARS-CoV-2 in the population served by the wastewater treatment facility. • Changes in the concentration of SARS-CoV-2 give an indication of whether the burden of disease is increasing or decreasing • Quantitative results between laboratories are not comparable. Quantitative results should be interpreted for a single wastewater treatment plant tested by the same laboratory using the same methodology over time.

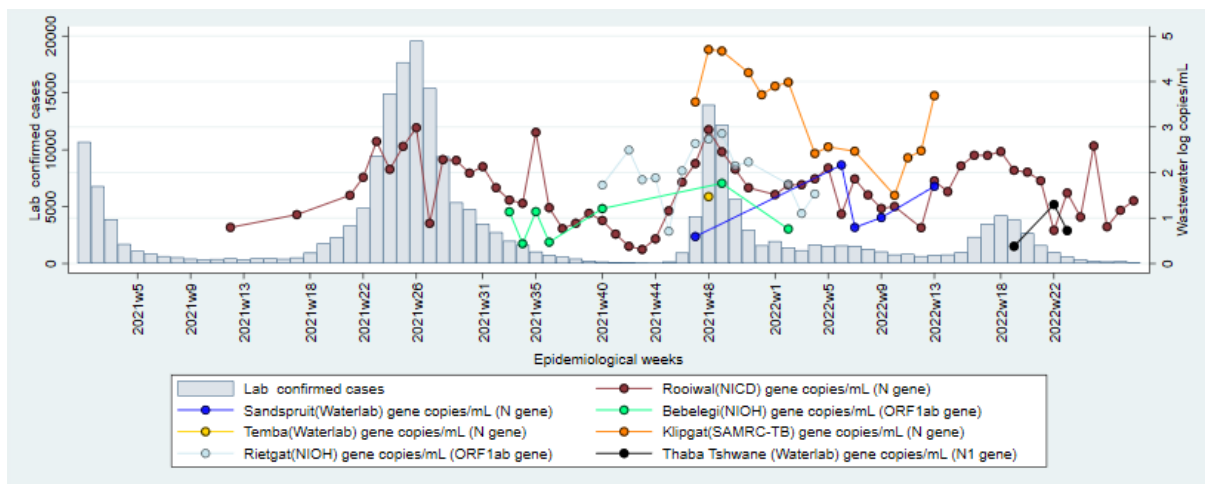
Results

Gauteng Province

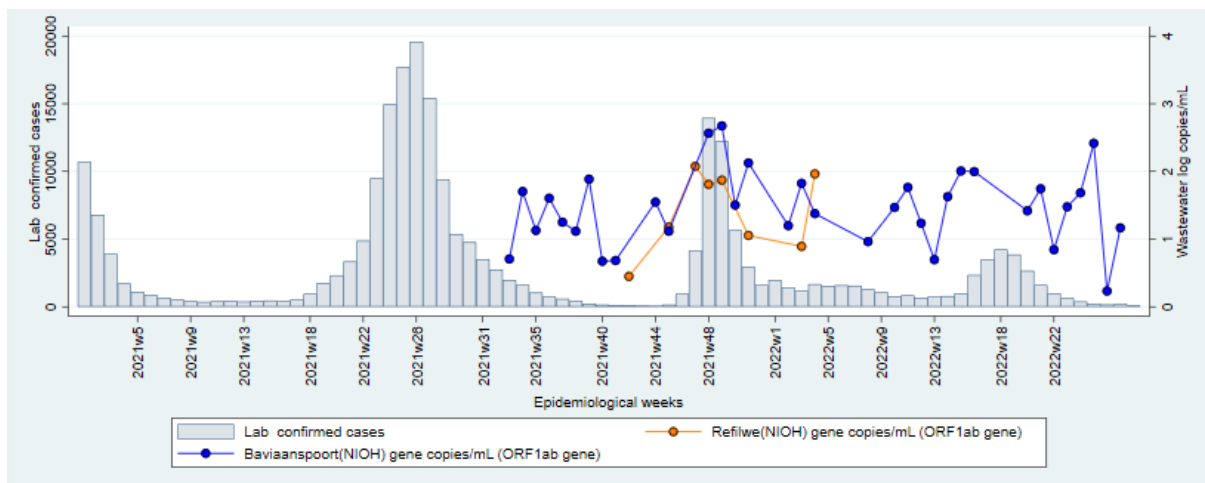
A: City of Tshwane South (sub-districts 3, 4, 6, and 7)



B: City of Tshwane North (sub-districts 1 & 2)



C: City of Tshwane North (sub-district 5)



Figures 1A-C. Laboratory confirmed cases of SARS-CoV-2 (bars) and levels of SARS-CoV-2 in log copies/ml of wastewater (coloured lines) for selected wastewater treatment plants (WWTP) and metropolitan areas in Tshwane District Municipality (Tshwane South and North), Gauteng Province during epidemiological weeks 1 of 2021 to week 28 of 2022. The testing laboratory and quantified SARS-CoV-2 gene is named in brackets after the name of the WWTP. Note that comparisons of levels over time should only be done for specimens tested in the same laboratory.

D: City of Johannesburg Metropolitan Municipality

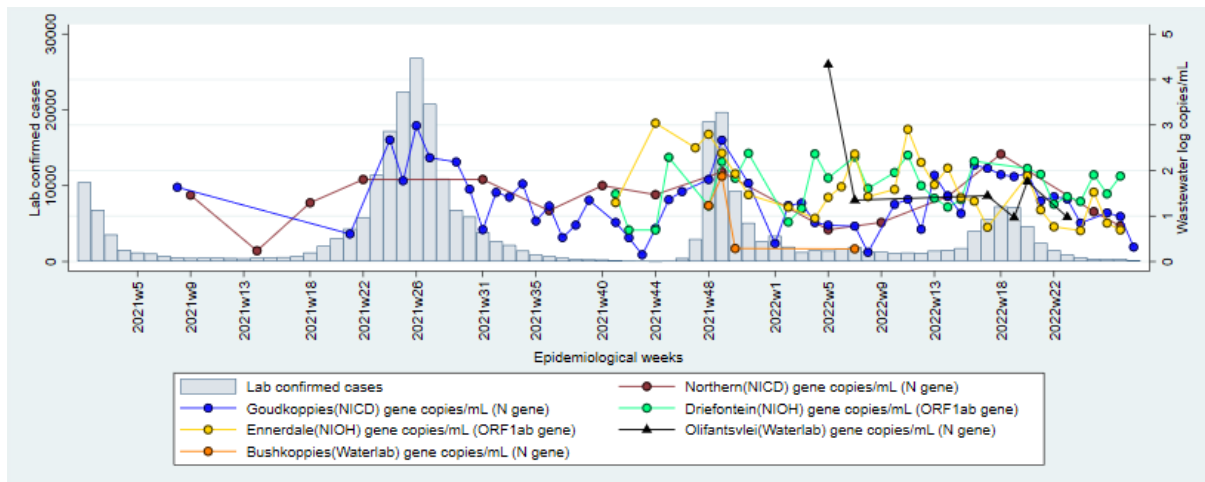
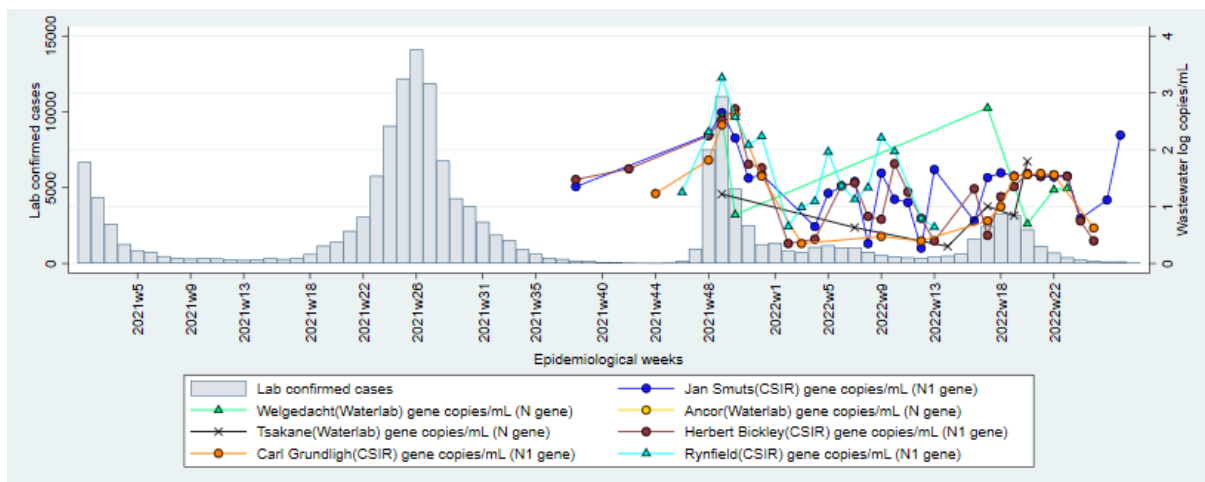
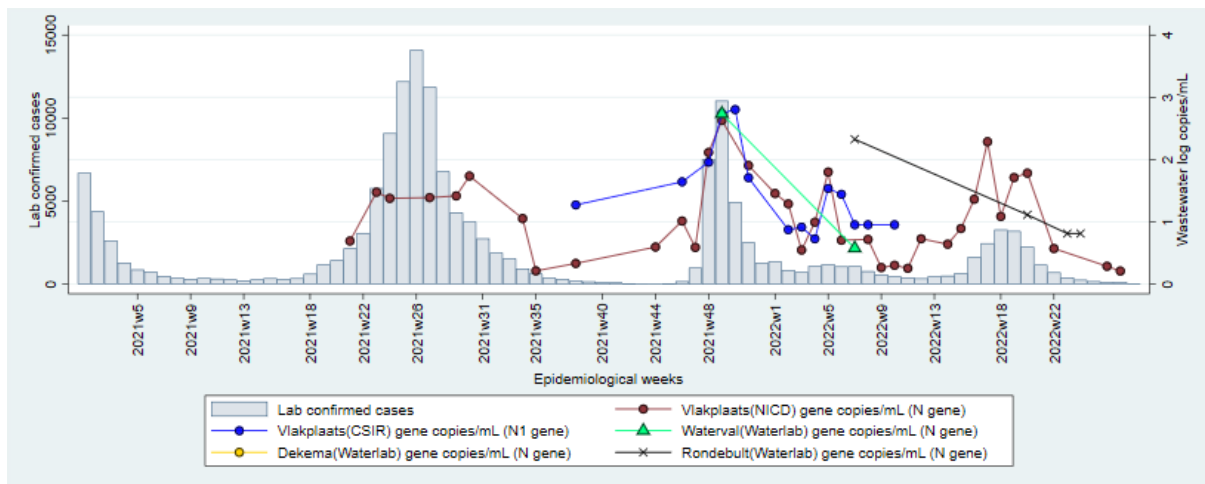


Figure 1D. Laboratory confirmed cases of SARS-CoV-2 (bars) and levels of SARS-CoV-2 in log copies/ml of wastewater (coloured lines) for selected wastewater treatment plants (WWTPs) in the City of Johannesburg Metropolitan Municipality, Gauteng Province during epidemiological weeks 1 of 2021 to week 28 of 2022. The testing laboratory and quantified SARS-CoV-2 gene are named in brackets after the name of the WWTP. Note that comparisons of levels overtime should only be made for specimens tested in the same laboratory.

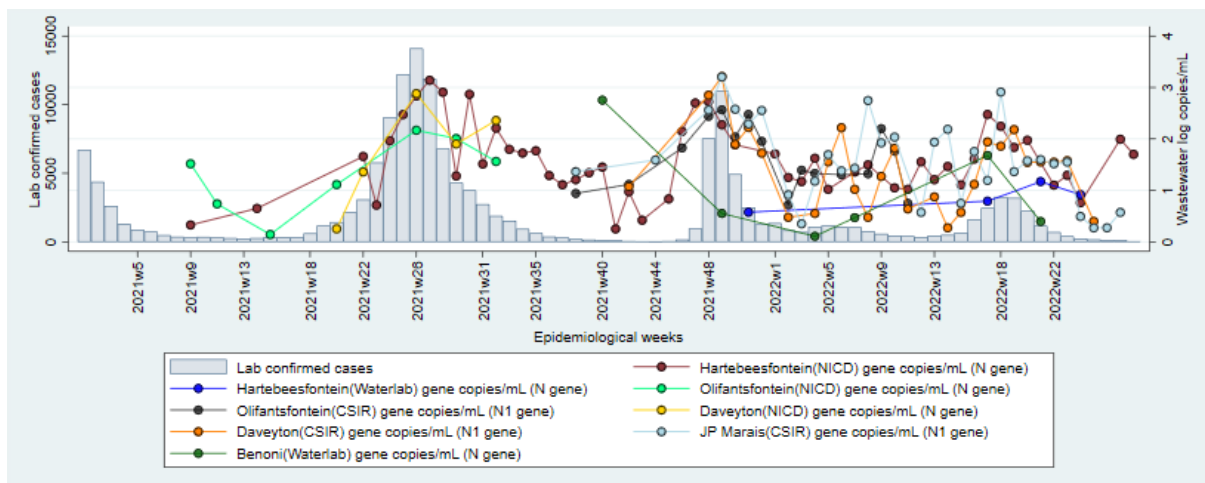
E: Ekurhuleni East (sub-districts D, E or E1, E2)



F: Ekurhuleni South (sub-districts A, F or S1, S2)



G: Ekurhuleni North (sub-districts B, C or N1, N2)



Figures 1E-G. Laboratory confirmed cases of SARS-CoV-2 (bars) and levels of SARS-CoV-2 in log copies/ml of wastewater (coloured lines) for selected wastewater treatment plants (WWTP) in Ekurhuleni Metropolitan Municipality, Gauteng Province during epidemiological weeks 1 of 2021 to week 28 of 2022. The testing laboratory and quantified SARS-CoV-2 gene are named in brackets after the name of the WWTP. Note that comparisons of levels over time should only be made for specimens tested in the same laboratory.

H. West Rand District Municipality

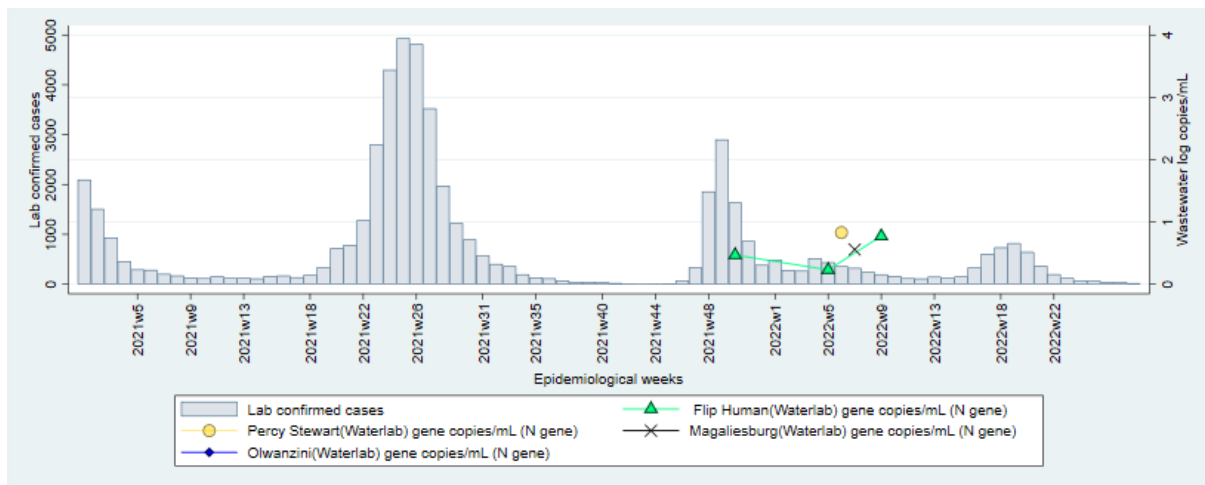


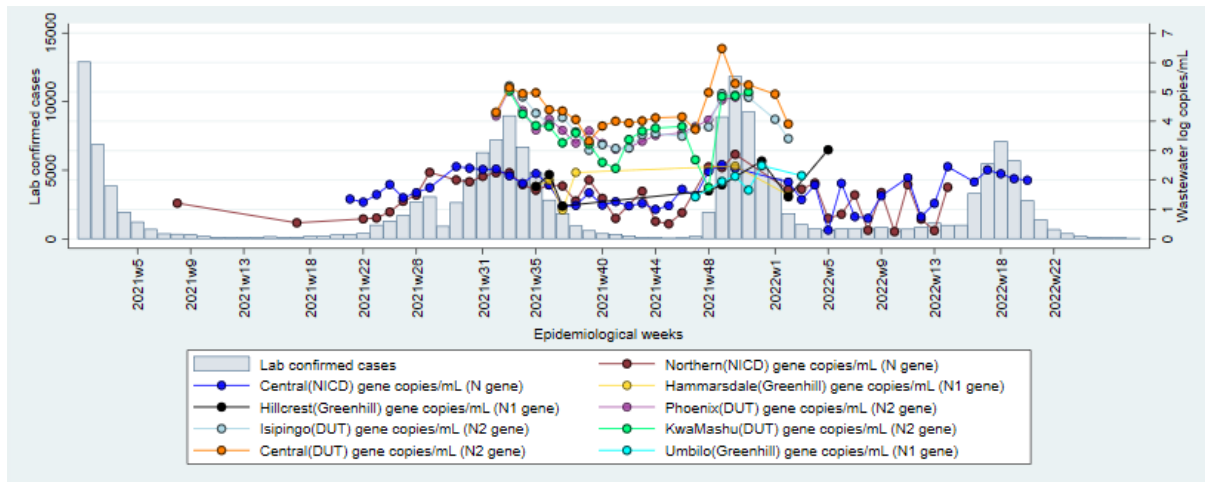
Figure 1H. Laboratory confirmed cases of SARS-CoV-2 (bars) and levels of SARS-CoV-2 in log copies/ml of wastewater (coloured lines) for selected wastewater treatment plants (WWTP) in West Rand District Municipality, Gauteng Province, during epidemiological weeks 1 of 2021 to week 28 of 2022. The testing laboratory and quantified SARS-CoV-2 gene are named in brackets after the name of the WWTP. Note that comparisons of levels over time should only be made for specimens tested in the same laboratory.

In Tshwane South, the levels at Daspoort and Sunderland have dropped to the bare minimum, while the levels at Rooiwal in Tshwane North have further increased from last week. In Johannesburg, the levels at Goudkoppies have dropped to almost zero.

In Ekurhuleni East and North, the levels at Jan Smuts WWTP and Hartebeesfontein WWTPs respectively continue to increase. In Ekurhuleni South however, the levels have dropped to almost zero at Vlakplaarts WWTP.

KwaZulu-Natal Province

2A: eThekweni Metropolitan Municipality



B: uMgungundlovu District Municipality

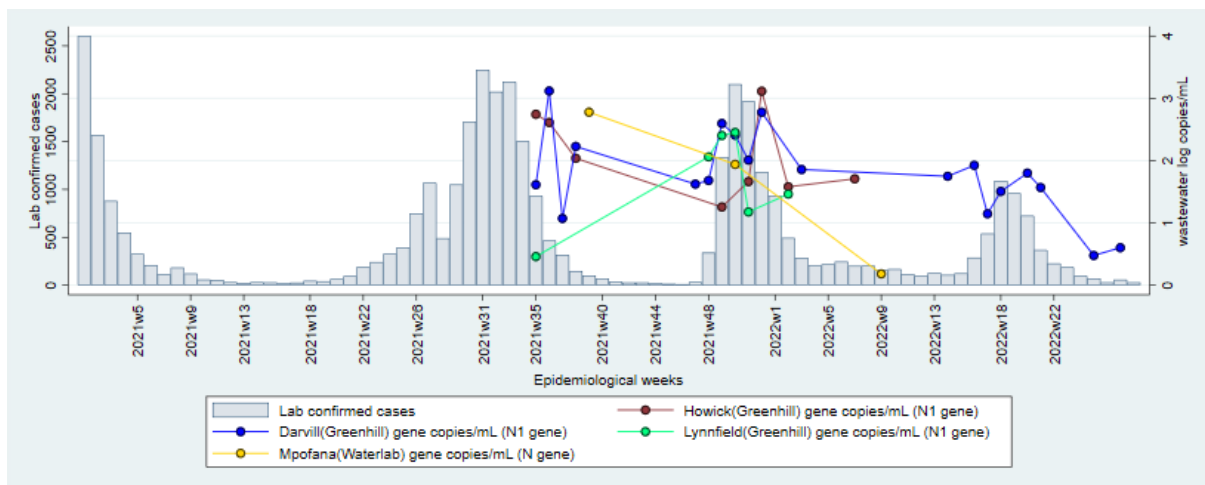
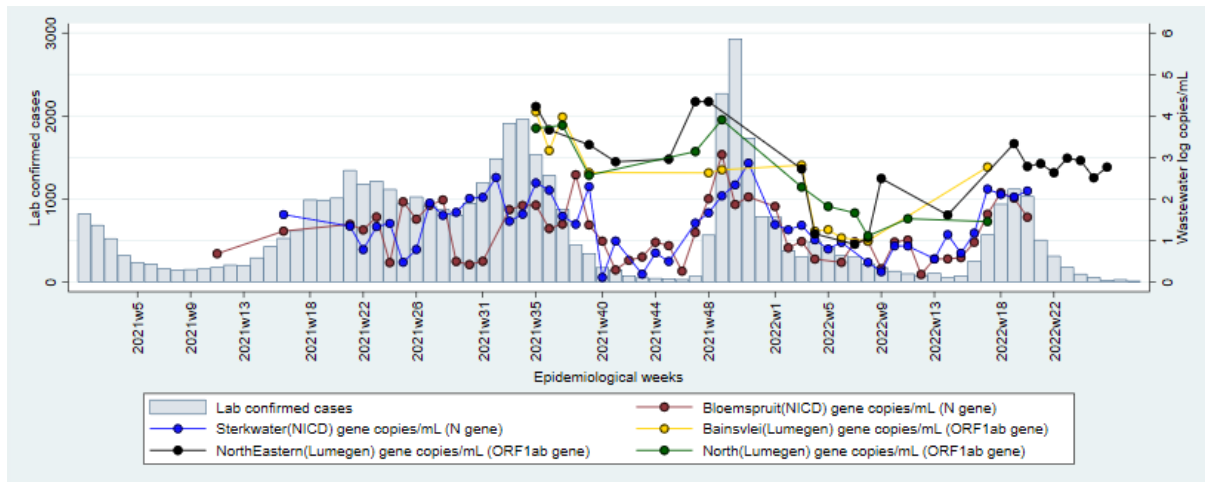


Figure 2A-B. Laboratory confirmed cases of SARS-CoV-2 (bars) and levels of SARS-CoV-2 in log copies/ml of wastewater (coloured lines) from wastewater treatment plants (WWTP) in eThekweni, (A-B) and uMgungundlovu Metro (C), Kwa-Zulu Natal Province during epidemiological weeks 1-52, 2021 and week 28, 2022. The testing laboratory and quantified SARS-CoV-2 gene are named in brackets after the name of the WWTP. Note that comparisons of levels over time should only be made for specimens tested in the same laboratory.

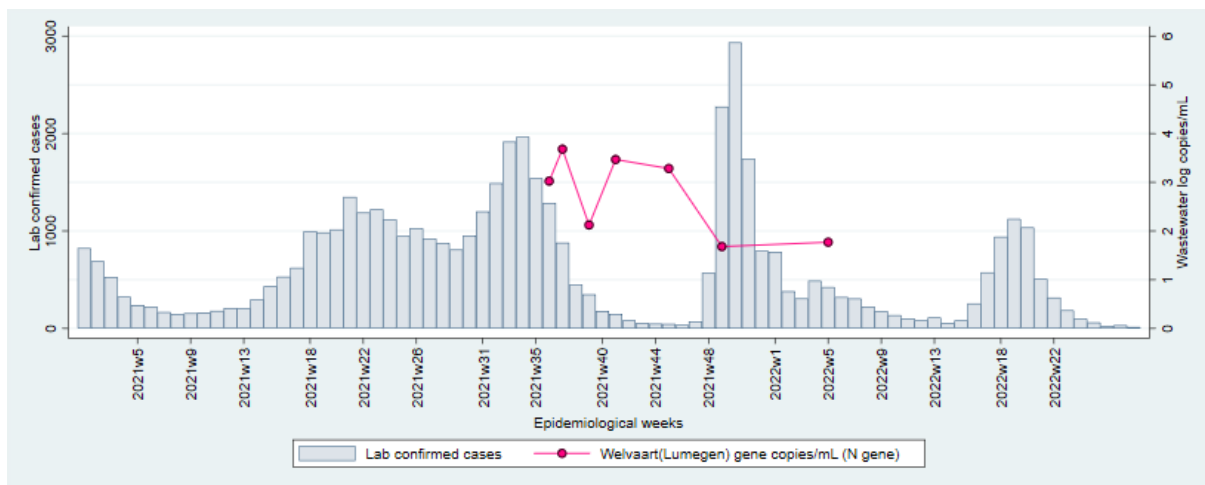
While more recent results are required in all the plants in eThekweni, SARS-Cov-2 continue to circulate at Darvill WWTP in uMgungundlovu.

Free State Province- Mangaung

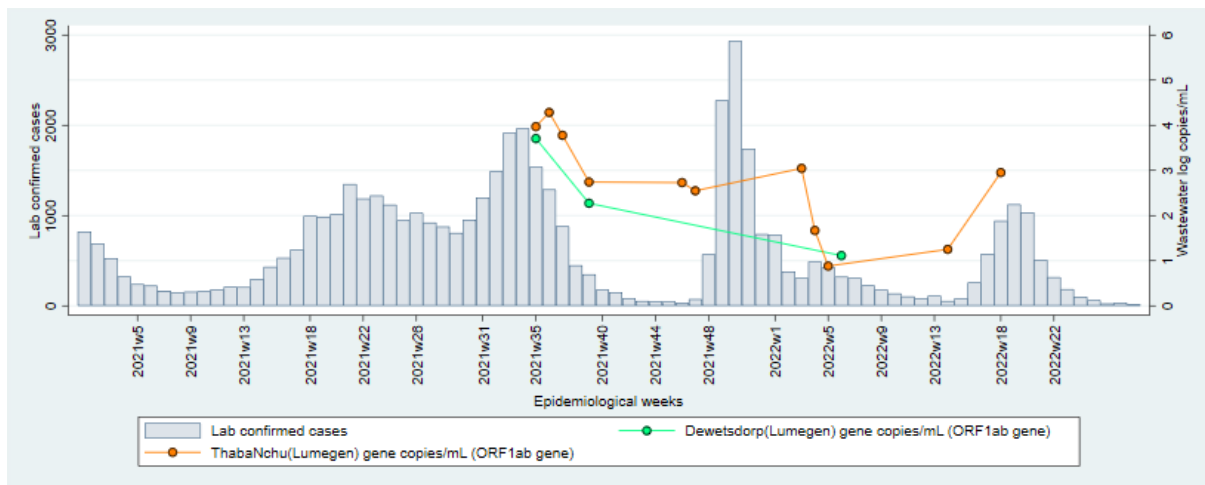
A: Bloemfontein sub-district



B. Botshabelo sub-district



C. Naledi & ThabaNchu sub-districts



Figures 3A-C. Laboratory confirmed cases of SARS-CoV-2 (bars) and levels of SARS-CoV-2 in log copies/ml of wastewater (coloured lines) from wastewater treatment plants (WWTPs) in Mangaung, Free State Province (Bloemfontein, Botshabelo, Naledi and ThabaNchu) during epidemiological weeks 1, 2021 to 28, 2022. The testing laboratory and quantified SARS-CoV-2 gene are named in brackets after the name of the WWTP. Note that comparisons of levels over time should only be made for specimens tested in the same laboratory.

In Bloemfontein sub-district, the high levels of SARS-CoV-2 wastewater remained stable at the Northern Eastern WWTP as of week 26, with more recent results required for this plant and others. The public health authorities should continue surveillance for cases, promote vaccination and non-pharmaceutical interventions.

Eastern Cape Province

A: Nelson Mandela Metropolitan Municipality

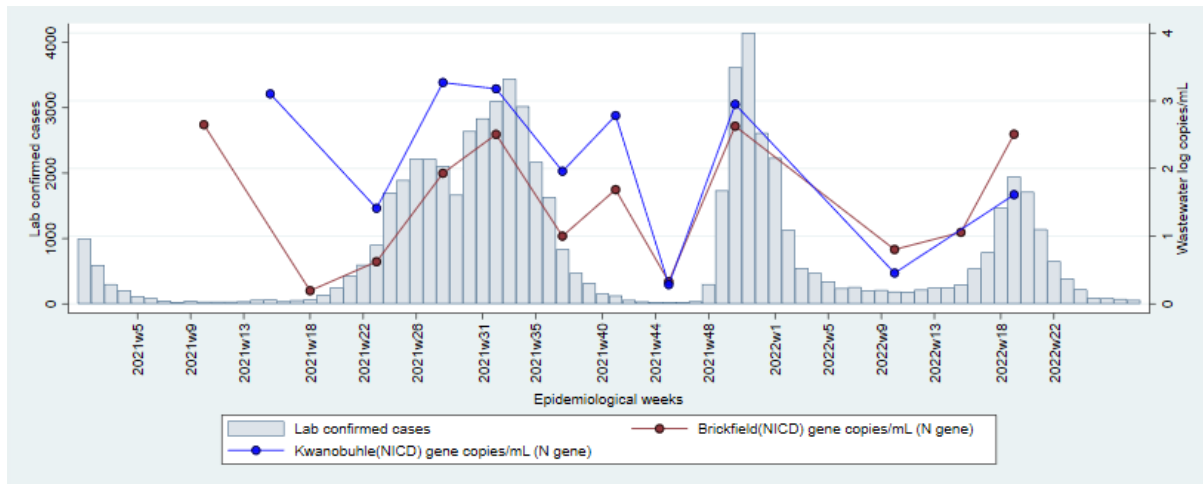


Figure 4A. Laboratory confirmed cases of SARS-CoV-2 (bars) and levels of SARS-CoV-2 in log copies/ml of wastewater (coloured lines) from wastewater treatment plants (WWTPs) in Nelson Mandela Metro, Eastern Cape Province during epidemiological weeks 1, 2021 to 27, 2022. The testing laboratory and quantified SARS-CoV-2 gene are named in brackets after the name of the WWTP. Note that comparisons of levels over time should only be made for specimens tested in the same laboratory

B Buffalo City Metropolitan Municipality

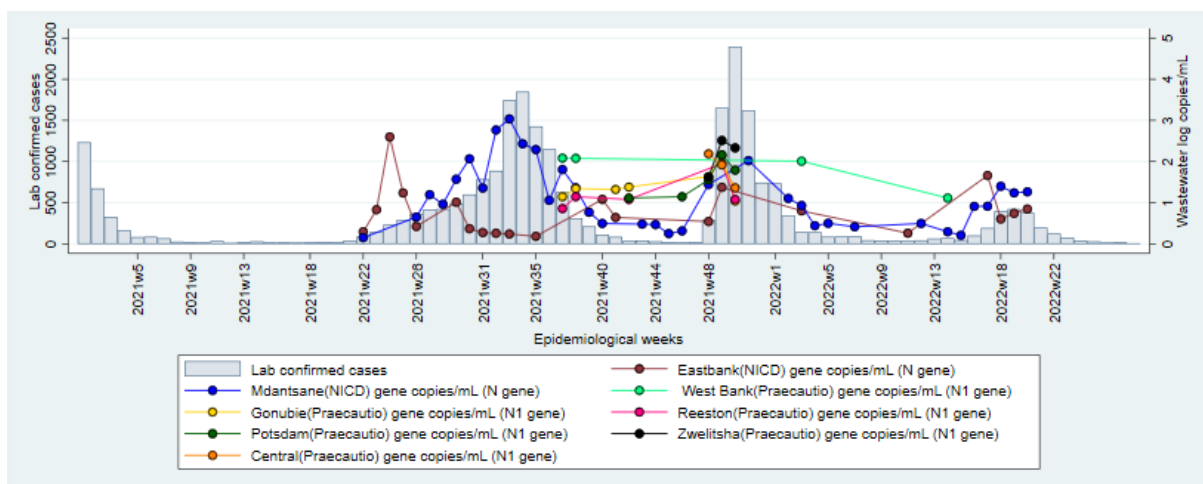


Figure 4B. Laboratory confirmed cases of SARS-CoV-2 (bars) and levels of SARS-CoV-2 in log copies/ml of wastewater (coloured lines) from wastewater treatment plants (WWTPs) in Buffalo City Metropolitan Municipality during epidemiological weeks 1, 2021 to 28, 2022. The testing laboratory and quantified SARS-CoV-2 gene are named in brackets after the name of the WWTP. Note that comparisons of levels over time should only be made for specimens tested in the same laboratory

In Nelson Mandela Metro, the SARS-CoV-2 levels were high at Brickfield and Kwanobuhle WWTPs as of week 19, while the number of cases begin to decline. Similarly, in Buffalo City Metro, the high levels at East Bank and Mdantsane WWTPs remained stable as of week 21. These areas will require recent results for assessment. The public health authorities should continue to promote vaccination and non-pharmaceutical interventions. Readers are referred to the SAMRC wastewater dashboard for more in-depth data regarding levels of SARS-CoV-2 in wastewater plants in Nelson Mandela Metro (<https://www.samrc.ac.za/wbe/>).

Western Cape Province

City of Cape Town

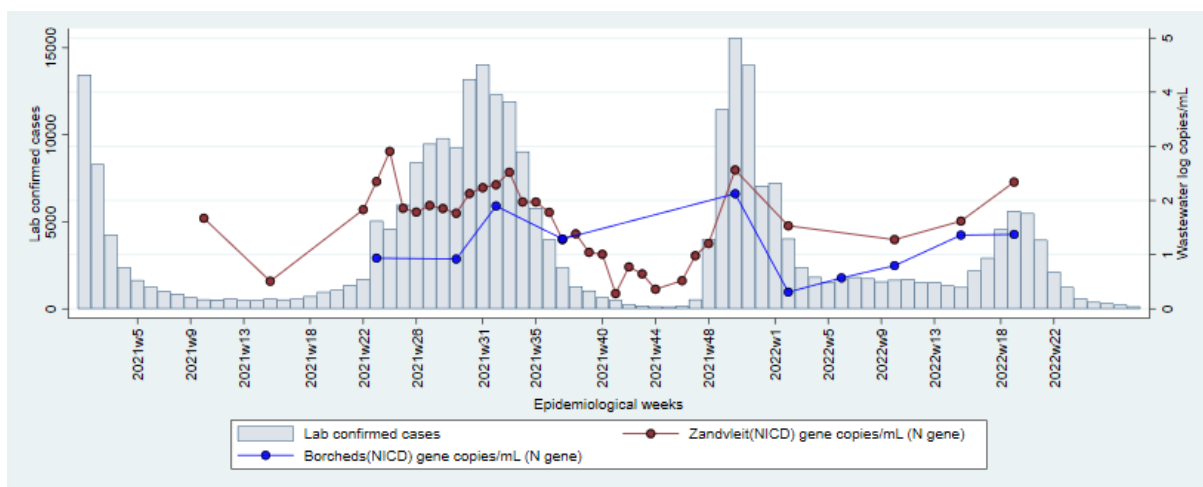
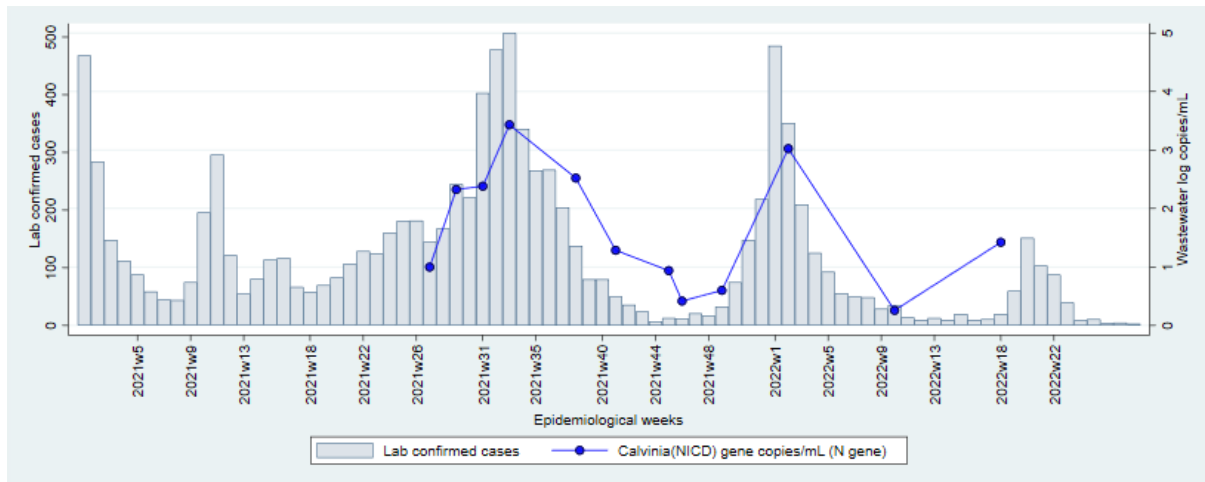


Figure 5. Laboratory confirmed cases of SARS-CoV-2 (bars) and levels of SARS-CoV-2 in log copies/ml of wastewater (coloured lines) from wastewater treatment plants (WWTPs) in the City of Cape Town, Western Cape Province during epidemiological weeks 1, 2021 to 28, 2022. The testing laboratory and quantified SARS-CoV-2 gene are named in brackets after the name of the WWTP.

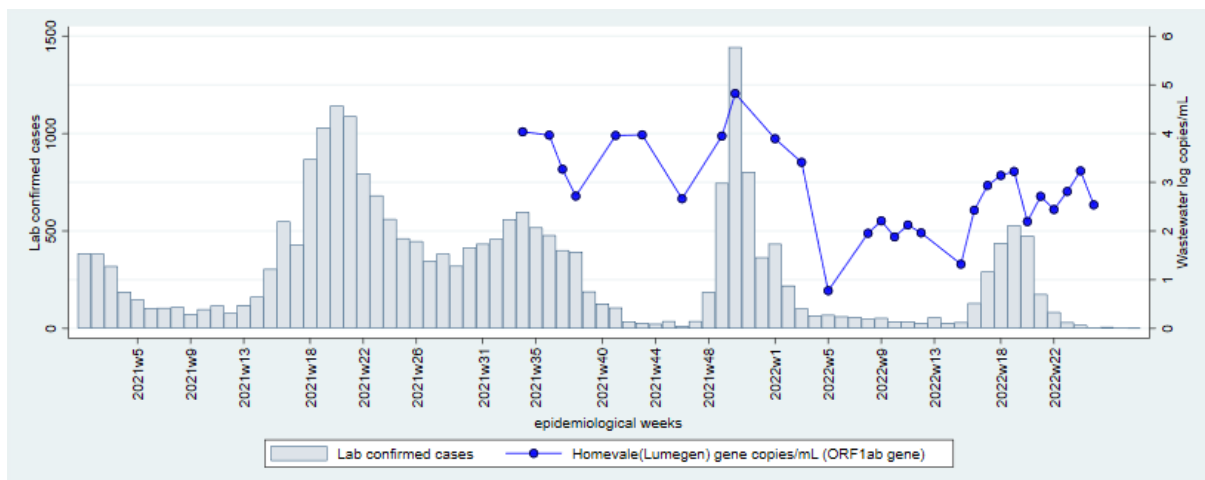
Our recent results show that the high levels of SARS-CoV-2 at Zandvleit WWTP were still high as of week 19, requiring more recent results. Readers are referred to the SAMRC website, which provides data from additional wastewater treatment plants in the City of Cape Town and other Western Cape districts (<https://www.samrc.ac.za/wbe/>) to contextualise the results. The public health authorities should continue surveillance for cases, promote vaccination and non-pharmaceutical interventions.

Northern Cape Province

A: Namakwa District Municipality



B: Frances Baard District Municipality

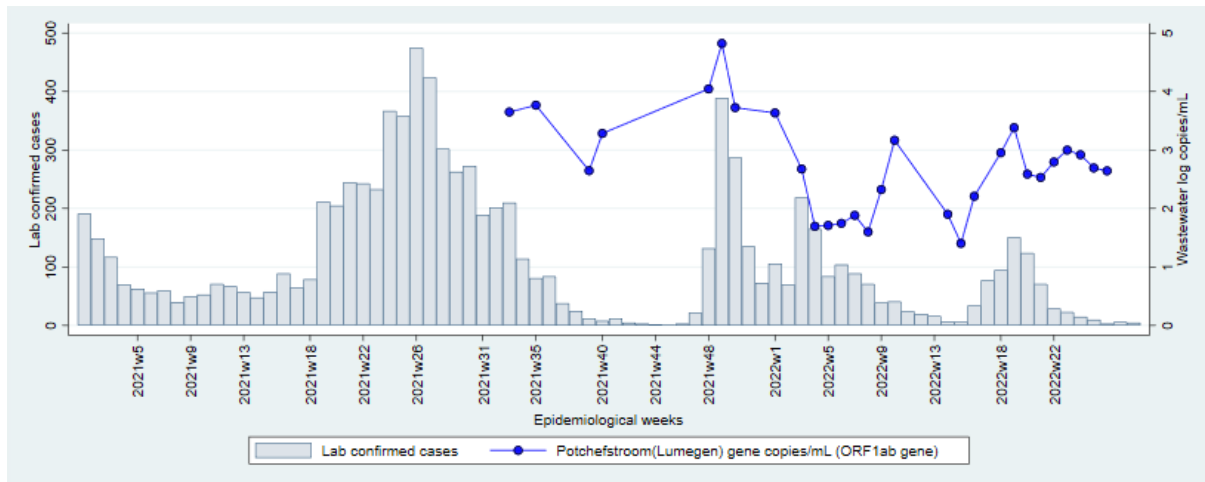


Figures 6A-B. Laboratory confirmed cases of SARS-CoV-2 (bars) and levels of SARS-CoV-2 in log copies/ml of wastewater (coloured lines) in wastewater treatment plants (WWTPs) from Calvinia in Namakwa Metro (a) and Kimberly in Frances Baard District (b), Northern Cape Province during epidemiological weeks 1, 2021 to week 28, 2022. The testing laboratory and quantified SARS-CoV-2 gene are named in brackets after the name of the WWTP. Note that comparisons of levels over time should only be made for specimens tested in the same laboratory.

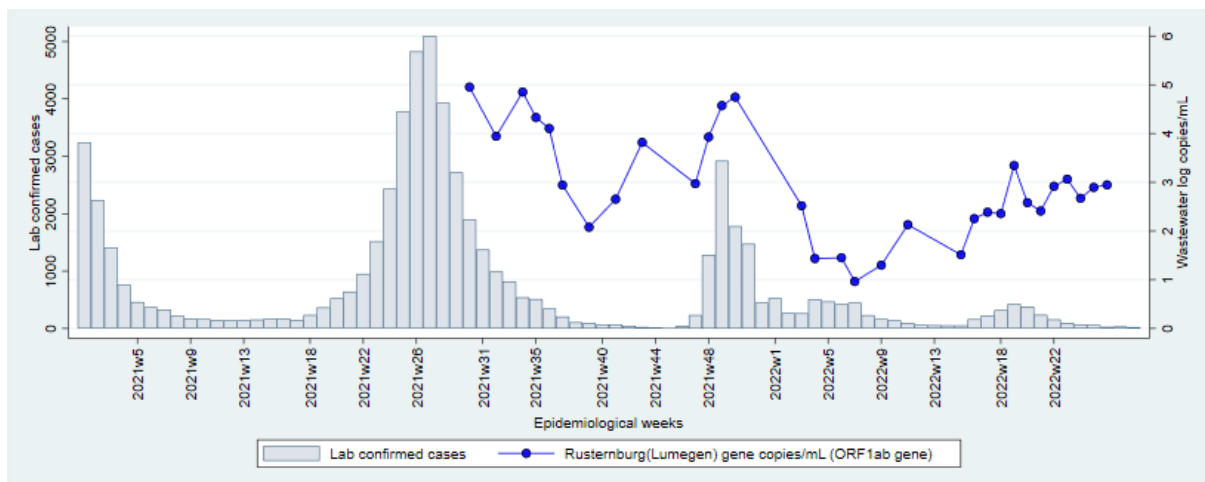
The levels at Homevale WWTP in Namakwa were high as of week 22 requiring more recent samples for assessment. The public health authorities should continue surveillance for cases, promote vaccination and non-pharmaceutical interventions.

Northwest Province

A: JB Marks Local Municipality



B: Bojanala District Municipality



C: City of Matlosana Municipality

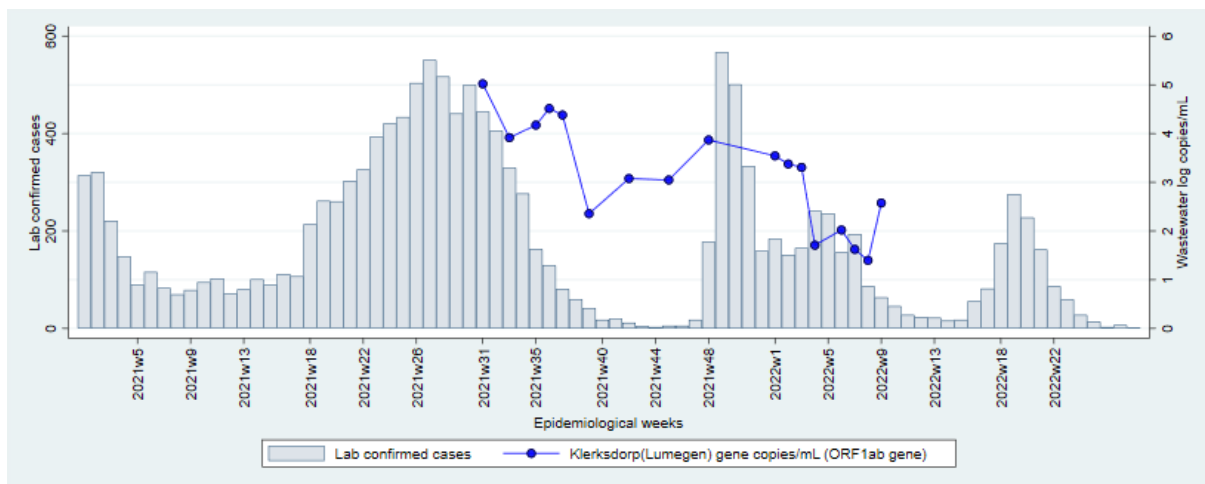
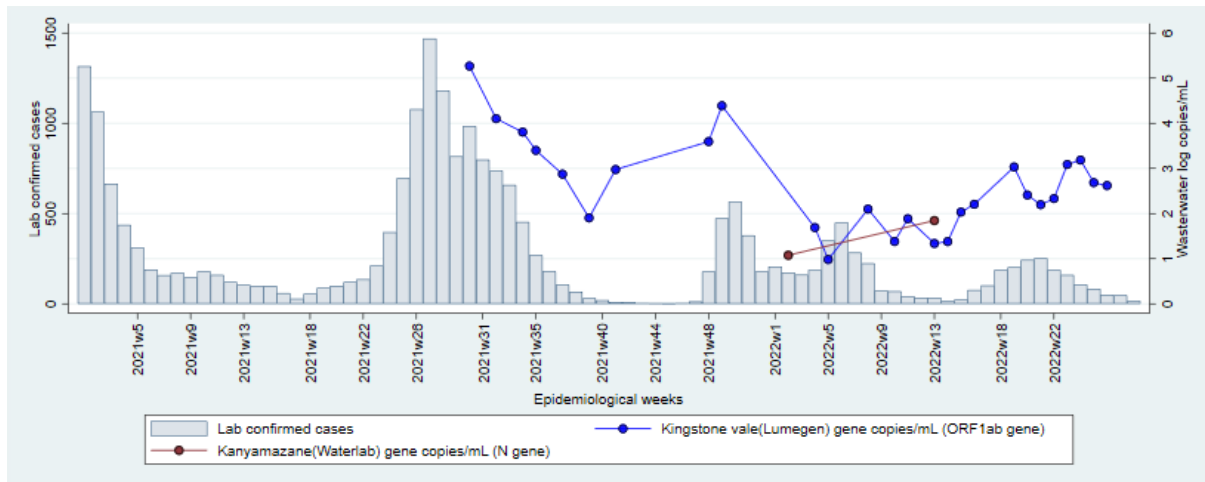


Figure 7A-C. Laboratory confirmed cases of SARS-CoV-2 (bars) and levels of SARS-CoV-2 in log copies/ml of wastewater (coloured lines) in wastewater treatment plants (WWTPs) from Potchefstroom, JB Marks District (A) Rustenburg, Bojanala District (B), and City of Matlosana, Northwest Province during epidemiological weeks 1, 2021 to 28, 2022. The testing laboratory and quantified SARS-CoV-2 gene are named in brackets after the name of the WWTP. Note that comparisons of levels over time should only be made for specimens tested in the same laboratory.

The high levels in Potchefstroom, and Rustenburg WWTPs in JB Marks and Bojanala districts respectively, remained stable as of week 26. More recent results are required in these areas. The public health authorities should continue surveillance for cases, and promote vaccination

Mpumalanga Province

A: Mbombela Local Municipality



B: Emalahleni Local Municipality

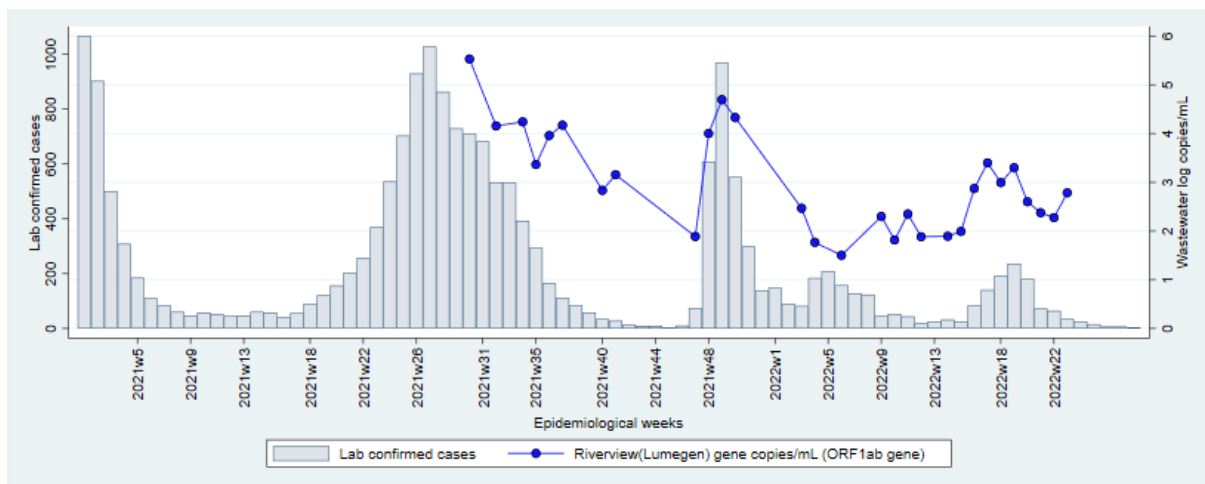


Figure 8A-B: Laboratory confirmed cases of SARS-CoV-2 (bars) and levels of SARS-CoV-2 in log copies/ml of wastewater (coloured lines) in wastewater treatment plants (WWTPs) from Mbombela and Emalahleni Local Municipality, Mpumalanga Province during epidemiological weeks 1, 2021 to 28, 2022. The testing laboratory and quantified SARS-CoV-2 gene are named in brackets after the name of the WWTP. Note that comparisons of levels over time should only be made for specimens tested in the same laboratory.

The high levels of SARS-CoV-2 in Mbombela (Kingstonvale WWTP) have remained high as of week 26. More recent results are required in these areas. The public health authorities should continue surveillance for cases, promote vaccination and non-pharmaceutical interventions.

Limpopo Province

Polokwane Local Municipality

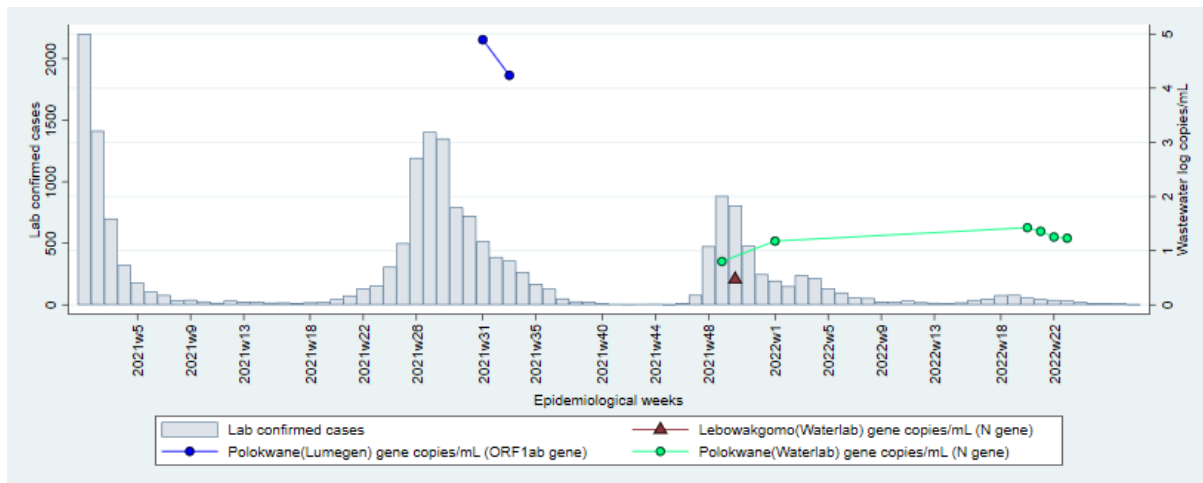


Figure 9. Laboratory confirmed cases of SARS-CoV-2 (bars) and levels of SARS-CoV-2 in log copies/ml of wastewater (coloured lines) in wastewater treatment plants (WWTPs) from Polokwane Local Municipality, Limpopo Province during epidemiological weeks 1, 2021 to 25, 2022.

The marginal levels of SARS-CoV-2 remained stable as of week 23, in Polokwane WWTP. The public health authorities should continue surveillance for cases and promote vaccination

Limitations

It is not possible to estimate population burden of disease using wastewater testing of SARS-CoV-2 as sources of variability are multiple, including variation in length and concentration of SARS-CoV-2 excretion by infected persons, variation in degradation rate of viral RNA in wastewater and sampling error. Interpretation of results from quantitative testing of SARS-CoV-2 in wastewater is enhanced when the population served by the wastewater treatment plants is well characterised in terms of SARS-CoV-2 testing rates, health seeking behaviour, hospital admissions and deaths due to SARS-CoV-2, as well as other general indicators of health. Further exploration of the relationship between quantitative SARS-CoV-2 results, local trends in clinical case burden, environmental factors, and test methodology will support the interpretation of observed fluctuations in RNA levels. Quality assessment and inter-laboratory comparisons are underway to ensure participating laboratories are providing consistent and comparable results.

PART 2: Results from sequencing of SARS-CoV-2 RNA fragments in wastewater

Background

SARS-CoV-2 has been classified into different variants, that are continually emerging as a result of viral evolution. These variants acquire or lose mutations coding for various epitopes found on key viral proteins which lead to changes in transmissibility dynamics, response to treatment or ability to evade neutralisation by antibodies. WHO classified SARS-CoV-2 variants into variants of concerns (VOCs) and variants of interest (VOIs). VOCs have included Alpha, Beta, Delta, and Gamma, and Omicron. Of these, Beta and Omicron were first reported in South Africa. VOIs include Lambda and Mu (<https://www.who.int/en/activities/tracking-SARS-CoV-2-variants/>).

The Network for Genomics Surveillance of South Africa (NGS-SA) monitors the epidemiology of SARS-CoV-2 variants in PCR-confirmed cases in South Africa. In clinical cases, variant detection is performed using whole genome sequencing and other methods such as real-time PCR. During the first wave (June to August 2020), the Wuhan SARS-CoV-2 strain dominated amongst clinical cases while in the second wave (November 2020 to February 2021), the Beta variant was discovered and was predominant. The third wave (May to September 2021) was characterized by the dominance of the Delta variant and the fourth wave (November 2021 to January 2022) by the Omicron variant.

Several groups have sequenced SARS-CoV-2 from wastewater including groups in the Netherlands which generated near whole genome sequence from wastewater (Lara *et al.*, 2020). In the United States, wastewater sequencing provided comparable results to clinical testing and contained sequences with previously undescribed mutations before they appeared in clinical samples (Crits-Christoph *et al.*, 2021).

Here, we report on SARS-CoV-2 sequences and variants of concern present in wastewater samples collected at sentinel wastewater treatment plants in South African urban metros from week 14 in 2021 to week 27 of 2022.

Methods

Wastewater sites

In 2020, the National Institute for Communicable Diseases commenced with sequencing of influent wastewater samples for SARS-CoV-2 RNA from 15 wastewater treatment plants in metropolitan areas, including five in Gauteng Province, four in Eastern Cape province, two in the City of Cape Town (Western Cape Province), two in Mangaung (Free State Province), two in eThekweni (KwaZulu- Natal Province) (Table 1).

Table 1. Characteristics of wastewater treatment facilities and of samples submitted for SARS-CoV-2 sequencing from these sites, 2021-2022

Province	Metro or District	Plant name	Population size served by the facility	Genomic testing			% samples yielding useable quality sequences
				Epidemiological week when sequencing started in 2021	# samples submitted for sequencing	# samples yielding useable quality sequences	
Eastern Cape	Buffalo City Metro	East Bank	141000	15	25	8	32.00
		Mdantsane	112900	25	36	13	36.11
	Nelson Mandela Metro	Brickfield	40000	15	10	6	60.00
		KwaNobuhle	100320	15	9	5	55.56
Free State	Mangaung	Sterkwater	200000	16	45	27	60.00
		Bloemspruit	350000	16	48	23	47.91
Gauteng	Ekurhuleni Metro	Daveyton	100000	20	5	4	80.00
		Hartebeesfontain	100000	14	48	33	68.75
		Vlakplaats	200000	21	39	21	58.82
	Johannesburg Metro	Northern	1200000	14	11	7	63.64
		Goudkoppies	500000	21	41	29	70.73
	Tshwane Metro	Rooiwal	unknown	17	54	39	72.22
		Daspoort	unknown	14	48	30	62.50
Kwazulu-Natal	eThekwin Metro	Northern	316425	17	35	22	62.86
		Central	350000	17	40	28	70.00
Western Cape	City of Cape Town Metro	Borcherd's Quarry	380000	15	9	2	22.22
		Zandvliet	460000	15	28	15	53.57
Total					531	312	

Sample collection, RNA extraction, amplification and sequencing

One litre of grab sewage samples were collected and transported at 4°C. Viruses were concentrated from the sample by ultrafiltration (Ikner, Soto-Beltran and Bright, 2011), and RNA was extracted using the QIAamp Viral RNA kit (Qiagen, GmbH, Germany). SARS-CoV-2 was detected by RT-PCR using Allplex™ 2019-nCoV Assay from Seegene kit (Seoul, Korea). RNA was re-extracted from SARS-CoV-2 positive concentrates and subjected to amplicon-based whole genome sequencing using the Sinai protocol with some modifications (Gonzalez-Reiche *et al.*, 2020). Libraries were prepared using the COVIDSeq Kit (Illumina Inc, USA), and sequencing was performed using Illumina COVIDSeq kits as described in (Bhojar *et al.*, 2021) at the Sequencing Core Facility at the NICD.

Sequence analysis

The ARTIC protocol for sequence analysis (<https://artic.network/ncov-2019/ncov2019-bioinformatics-sop.html>) was used in the Galaxy pipeline for sequence analysis (RC, 2005). Reads were trimmed and filtered according to published criteria (Khailany, Safdar and Ozaslan, 2020). At least 10 reads required

at each nucleotide position for downstream analysis. Mutations present at 10% or less were removed from the analysis. Reads were mapped against the reference genome (Wuhan strain/ NC_045512.2) and amino acid variation was analysed. Table 2 illustrates an example of amino acids variation file (<https://usegalaxy.eu/>).

Table 2: Illustration of amino acids variations. A shows sample ID. B is QC filter, which is quality indicator. C is the number of reads produced for each sample. D is the effect of the mutation detected in the gene. E is the name of the gene where mutation occurred. F is the mutation detected. G is the frequency of the reads in the mutation.

A	B	C	D	E	F	G
Sample	QC filtre	Number of reads	Mutation effect	Gene	Mutation	Frequency of mutations
ENV-COV-21-285_S337_001.fastq	PASS	12	NON_SYNONYMOUS_CODING	ORF1ab	K790Q	0.833333
ENV-COV-21-285_S337_001.fastq	PASS	644	NON_SYNONYMOUS_CODING	ORF1ab	K798N	0.057453
ENV-COV-21-285_S337_001.fastq	PASS	14	NON_SYNONYMOUS_CODING	ORF1ab	F800L	0.857143
ENV-COV-21-285_S337_001.fastq	PASS	44	SYNONYMOUS_CODING	ORF1ab	G45	0.863636
ENV-COV-21-285_S337_001.fastq	min_af_0.05Xmin_dp_1Xmin_dp_alt_10	44	FRAME_SHIFT	ORF1ab	Y46L?	0.045455
ENV-COV-21-285_S337_001.fastq	PASS	1347	NON_SYNONYMOUS_CODING	ORF1ab	T54P	0.123979
ENV-COV-21-285_S337_001.fastq	PASS	153	SYNONYMOUS_CODING	ORF1ab	T54	0.078431

SARS-CoV-2 in the sewage system is fragmented and the genome originated from multiple different individuals, therefore, the generation of a consensus sequence for each sample is not meaningful. Therefore, to identify variants at each geographic location, we analysed amino acid variation in each individual sample. For each VOC or VOI, unique single nucleotide polymorphisms were identified by comparing the new lineage with the Wuhan strain in a public database (<https://outbreak.info/>). Using the amino acid variation data file, we used STATA software (v 17.1) (<https://www.stata.com/>) to collate spike-gene mutations in a matrix such that the columns represented the amino acid positions of the spike protein and each row recorded all mutations detected in each sample at every locus across the spike gene. We included all mutations, including low frequency mutations and recorded the proportion of reads where that mutation was detected (the 'read frequency') as a percentage of total reads. Using the list of unique mutations for each VOC and VOI in the spike protein region (Table 3) we interrogated the matrix for the presence or absence of known signature mutations in each sample using STATA software (Table 3). As new variants were detected and identified in clinical specimens, we added signature mutations to the STATA code, allowing us to identify the presence of new variants both retrospectively and prospectively.

Table 3: List of signature mutations which was used to identify VOC and VOI present in wastewater samples from week 14 in 2021 to week 27 of 2022

Omicron	Alpha	Beta	Delta	C.1.2	Gamma	Lambda	Mu
V213G	A570D	D80A	R145H	P9L	T20N	G75V	Y144S
G339D	S982A		A222V	C136F	P26S	T76I	Y145N
S371L	D1118H		R158G	Y449H	T1027I	D253N	
S373P						L452Q	
S375F						F490S	
T376A							
D405N							
F486V*							
Q493R							
G496S							
Y505H							
T547K							
N764K							
N856K							
Q954H							
N969K							
L981F							
N658S*							
V3G*							
T19R							

*associated with Omicron variant BA.4/5

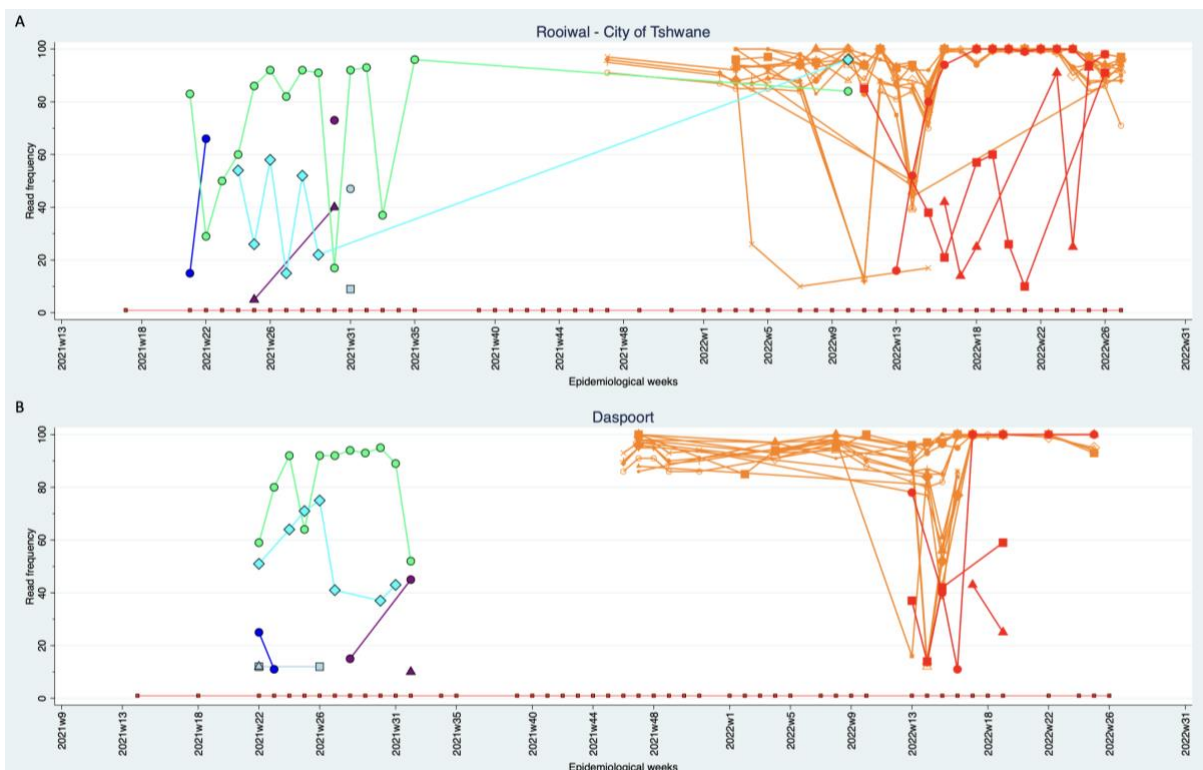
Results and discussion

Up to the 5th July 2022, a total of **531** wastewater samples from sites listed in Table 1 underwent RNA extraction, amplification and sequencing. Of these **531** samples, **312 (58.76%)** yielded SARS-CoV-2 RNA sequences

Detection of SARS-CoV-2 variants from wastewater samples using signature mutations analysis

Gauteng province

In the Gauteng province, **163** samples yielded sequencing results displayed in Figure 1, which illustrates how beta variant was present in north and southern Gauteng province in week 21-22, but was replaced by Delta variant across the province from weeks 21 until 34. A variant detected first in South Africa, C.1.2 mutations were simultaneously present at Rooiwal, Daspoort and Goudkoppies. During the interwave period (weeks 34-44) most samples submitted for sequencing failed to yield good quality sequence data, most likely due to low or absent SARS-CoV-2 RNA fragments. The Delta variant was further found to have re-emerged in weeks 10 and 18, 2022, in Rooiwal and Hartebeesfontein, respectively and in Goudkoppies, in week 7, continuing until week 21, 2022. Omicron variant was first detected in week 46 and by week 47 was found to be present at all plants across the province and continues to be present up to week 26 of 2022. The F486V mutation (see Figure 1 below, represented as a red circle) was found in Rooiwal, Daspoort, Goudkoppies WWTP, Hartebeesfontein, Vlakplaats after week 10. Mutation N658S (see Figure 1 below, represented as a red square) was found in all sites, after week 13. Mutation V3G (see Figure 1 below, represented as a red triangle) was found in Rooiwal, Goudkoppies WWTP and Vlakplaats after week 13. The three mutations represented in red indicate that BA.4, and BA.5 sub-variants of Omicron are circulating in Johannesburg, Ekurhuleni and City of Tshwane. Mutation T19R was recently found to be associated with omicron.



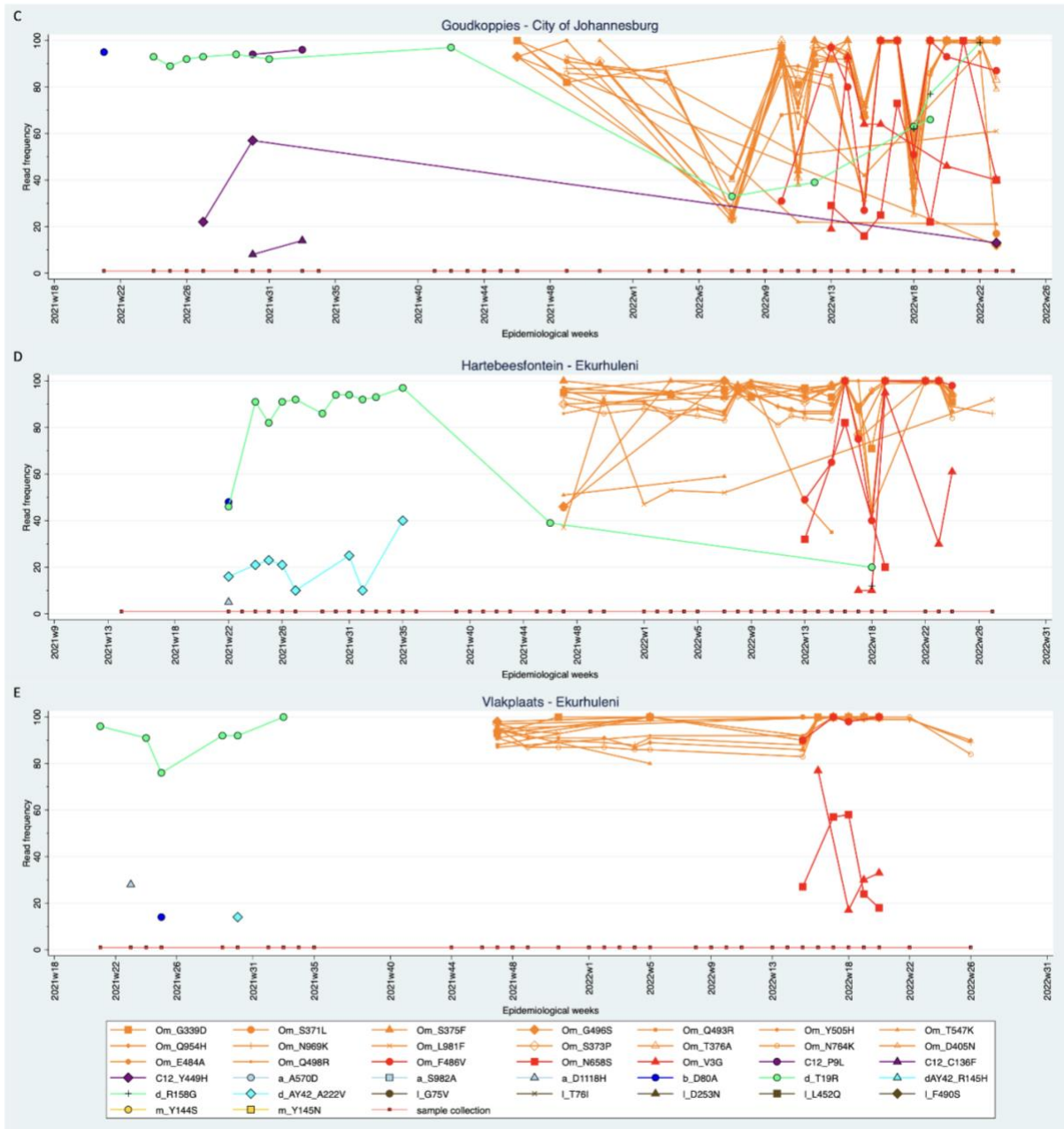


Figure 1: Beta mutation (D80A, dark blue circle). Delta mutations: T19R (green circle), R145H (pale blue triangle), R158 (green cross), A222V (pale blue diamond). C.1.2 mutations: P9L (purple circle), C136F (purple triangle), Y449H purple diamond. Omicron mutations: G339D (orange square), S371L (orange circle), S375F (orange triangle), G496S (orange diamond), Q493R (orange dot), Y505H (medium point orange circle), T547K (orange small triangle), Q954H (orange small diamond), N969K (orange small line), L981F (orange small x), S373P (orange hollow diamond), T376A (orange hollow triangle), D405N (small orange hollow triangle), E484A (small orange solid circle), Q498R (point orange circle), F486V (red circle), N658S (red square) and V3G (red triangle). Dots on the red line shows the timepoints of sample collection, absence of specific coloured lines means the mutation was not detected

at that timepoint. A (Rooiwal plant), B (Daspoort plant), C (Goudkoppies plant), D (Hartebeesfontein plant), and E (Vlakplaats plant).

KwaZulu- Natal province

In KwaZulu-Natal province, **50** samples yielded good sequences and were included in Figure 2. Beta variant was detected in a single sample from Central plant in week 24. Delta variant was present from weeks 21 to 35 in Northern eThekwini and weeks 21 to 43 in central eThekwini. The delta variant was further found to have re-emerged in central eThekwini in week 14 and continues until week 19. As in the Gauteng Province, C.1.2 was present at lower read frequencies from weeks 35, 2021 and 4, 2022 in central eThekwini. During the interwave period (weeks 34-44) most samples submitted for sequencing failed to yield good quality sequence data, most likely due to low or absent SARS-CoV-2 RNA fragments. Omicron variant was first detected in week 39, 2021 in Northern eThekwini and week 48, 2021 in central eThekwini. Omicron variant continues to be present up to week 20 of 2022. Mutation F486V was found in both central and northern eThekwini from Epiweek 13 (see Figure 2 below, represented as a red circle) and mutation V3G was found in central eThekwini after Epiweek 15, indicating that BA.4, and BA.5 sub-variants are circulating in eThekwini. Mutation T19R was recently found to be associated with omicron.



Figure 2: Beta mutation (D80A, dark blue circle). Delta mutations: T19R (green circle), R145H (pale blue triangle), E156del (green square), R158 (green cross), A222V (pale blue diamond). C.1.2 mutations: P9L (purple circle), C136F (purple triangle), Y449H purple diamond. Omicron mutations: G339D (orange square), S371L (orange circle), S375F (orange triangle), G496S (orange diamond), Q493R (orange dot), Y505H (medium point orange circle), T547K (orange small triangle), Q954H (orange small diamond), N969K (orange small line), L981F (orange small x), S373P (orange hollow diamond), T376A (orange hollow triangle), D405N (small orange hollow triangle), E484A (small orange solid circle), Q498R (point orange circle), F486V (red circle), N658S (red square) and V3G (red triangle). Dots on the red line shows the timepoints of sample collection, absence of specific coloured lines means the mutation was not detected at that timepoint. A (Northern eThekweni plant) and B (Central eThekweni plant).

Free State province

In Mangaung, Free State province, **50** samples yielded sequencing results displayed in Figure 3. The Beta variant was present until week 23 (Sterkwater plant) and 25 (Bloemspruit) when it was co-detected with Delta variant. As in Gauteng, Delta variant dominated from weeks 23 until 34, along with two Delta sub-lineages. Variant C.1.2 was detected in week 31 in Bloemspruit plant. No samples yield quality sequence data from weeks 35-46. Omicron was first detected in week 48 at both plants and continues to be present up until week 20. Mutation V3G was found in both Sterkwater and Bloemspruit in 2021, week 43 and 2022, week 16,

respectively. Mutations F486V and N658S (see Figure 3 below, represented as a red circle and square, respectively) were found in Sterkwater plant in Epiweek 14 and week 16 in the Bloemspruit plant, indicating that the BA.4, and BA.5 sub-variants are circulating in Mangaung.

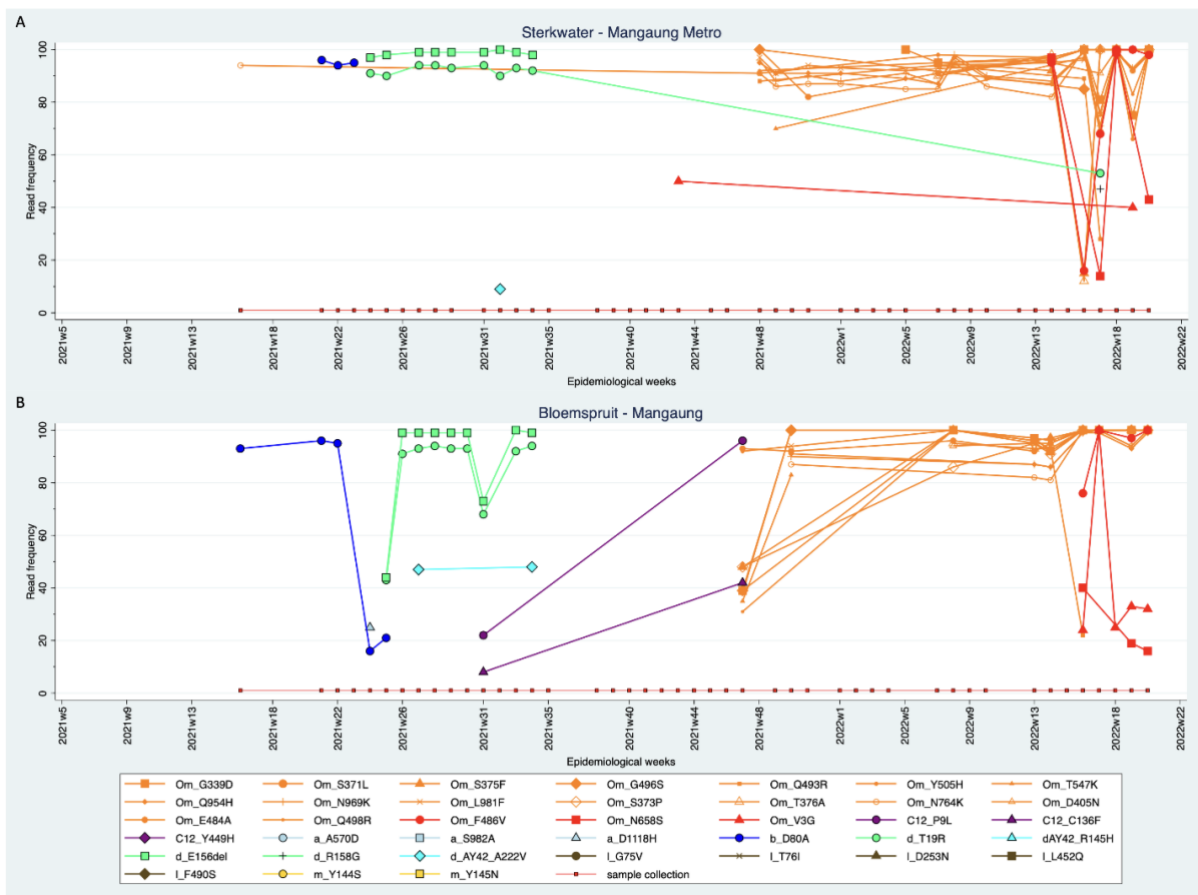


Figure 3: Beta mutation (D80A, dark blue circle). Delta mutations: T19R (green circle), R145H (pale blue triangle), E156del (green square), R158 (green cross), A222V (pale blue diamond). C.1.2 mutations: P9L (purple circle), C136F (purple triangle), Y449H purple diamond. Omicron mutations: G339D (orange square), S371L (orange circle), S375F (orange triangle), G496S (orange diamond), Q493R (orange dot), Y505H (medium point orange circle), T547K (orange small triangle), Q954H (orange small diamond), N969K (orange small line), L981F (orange small x), S373P (orange hollow diamond), T376A (orange hollow triangle), D405N (small orange hollow triangle), E484A (small orange solid circle), Q498R (small point orange circle), F486V (red circle), N658S (red square) and V3G (red triangle). Dots on the red line shows the timepoints of sample collection, absence of specific coloured lines means the mutation was not detected at that timepoint. A (Sterkwater plant) and B (Bloemspruit plant).

Western Cape province

In the Western Cape Province, 17 samples yielded sequencing results displayed in Figure 4. At the Zandvliet plant, Delta variant along with sub-lineages were detected from week 25-35. Evidence of C.1.2 was found in week 22. A single mutation associated with Omicron was observed in week 24, 2021 (G339D) and re-emerged in week 2, 2022. Other omicron mutations were detected in week 47, 2021 and continues until week 19, 2022. The F486V,

N658S and V3G mutations (see Figure 4 below, represented as a red circle and square, respectively) were, in addition, found in week 19, indicating that the new BA.4, and BA.5 sub-variants are circulating in parts of City of Cape Town.

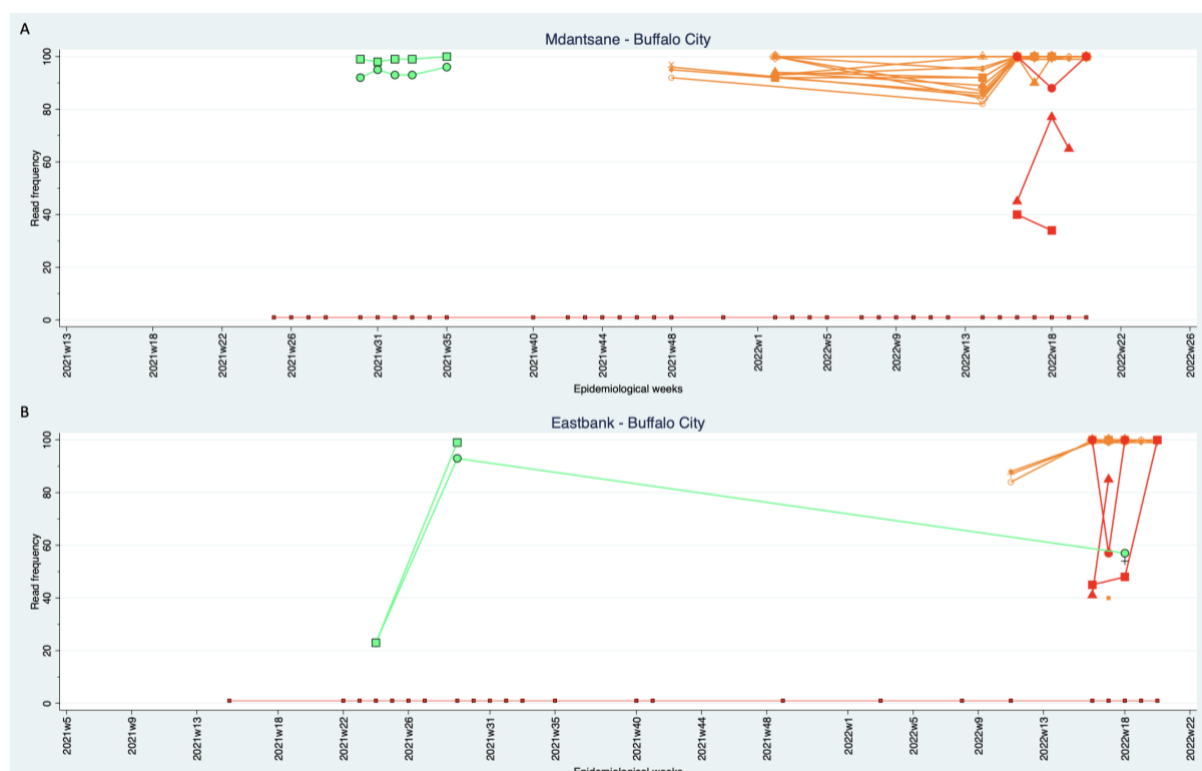
At the Borcherd's Quarry plant, the Delta variants and sub-lineages were detected in week 32, no samples yielded quality sequence data from week 34, 2021 to week 2, 2022 and 2 mutations associated with omicron were detected in week 15, 2022. Mutation T19R was recently found to be associated with omicron.



Figure 4: Beta mutation (D80A, dark blue circle). Delta mutations: T19R (green circle), R145H (pale blue triangle), E156del (green square), R158 (green cross), A222V (pale blue diamond). C.1.2 mutations: P9L (purple circle), C136F (purple triangle), Y449H purple diamond. Omicron mutations: G339D (orange square), S371L (orange circle), S375F (orange triangle), G496S (orange diamond), Q493R (orange dot), Y505H (medium point orange circle), T547K (orange small triangle), Q954H (orange small diamond), N969K (orange small line), L981F (orange small x), S373P (orange hollow diamond), T376A (orange hollow triangle), D405N (small orange hollow triangle), E484A (small orange solid circle), Q498R (small point orange circle), F486V (red circle), N658S (red square) and V3G (red triangle). Dots on the red line shows the timepoints of sample collection, absence of specific coloured lines means the mutation was not detected at that timepoint. A (Zandvliet plant) and B (Borcherd's Quarry plant).

Eastern Cape province

In the Eastern Cape Province, **32** samples yielded sequencing results displayed in figure 5. The Delta variant and sub-lineages were detected in week 30 until week 35 (Mdantsane plant), week 24 until 29 and further re-emerged in week 18, 2022 (Eastbank plant), week 28 until 32 (Brickfield) and week 28 until 41 (Kwanobuhle). Omicron variant was first detected in week 48 at the Mdantsane plant, week 50 at the Kwanobuhle plant and Brickfield plants and week 10, 2022 at the Eastbank plant. No C1.2. variants were detected at all plants. Mutations F486V, N658S and V3G (see Figure 5 below, represented as a red circle, square and triangle, respectively) were found in Epiweek 16, 2022, indicating that BA.4 and BA.5 sub-variants are circulating in parts of the Eastern Cape. Mutation T19R was recently found to be associated with omicron.



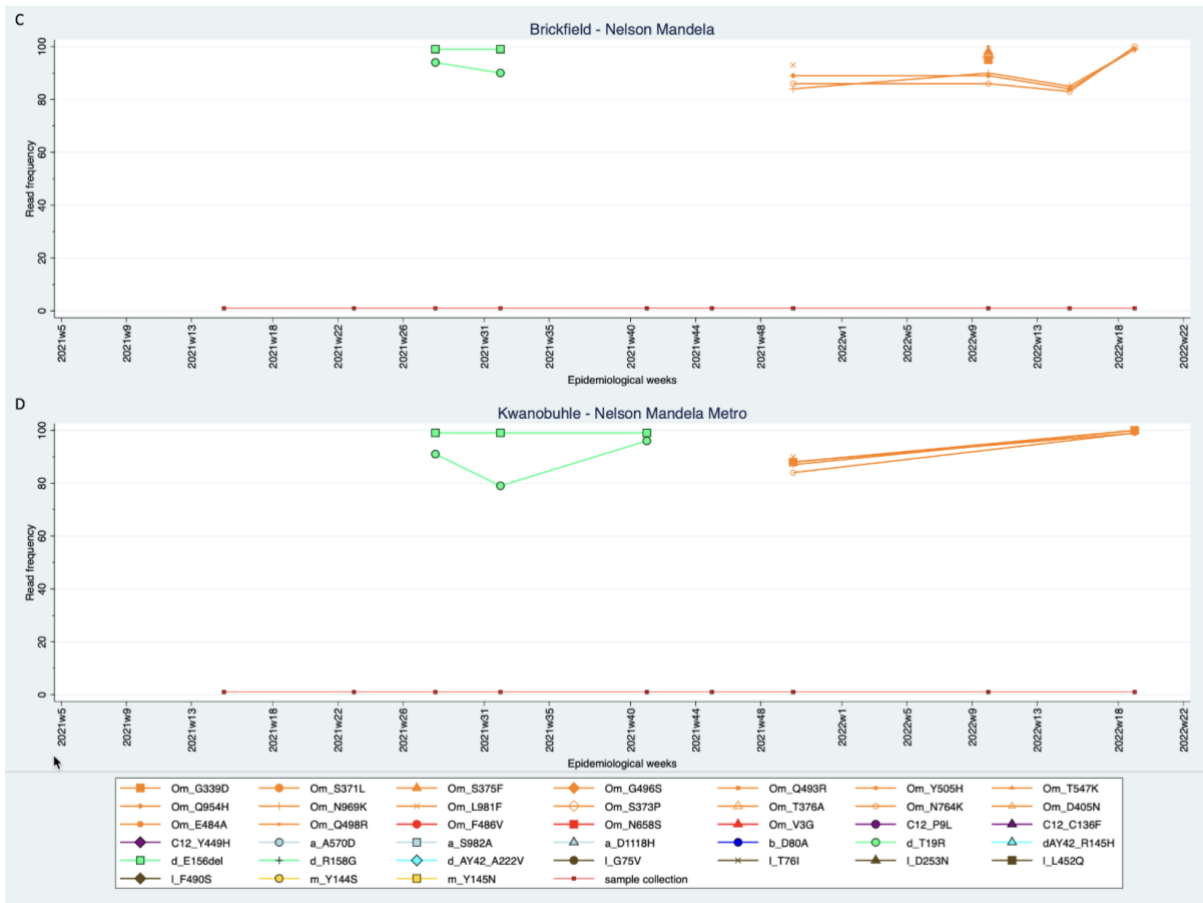


Figure 5: Beta mutation (D80A, dark blue circle). Delta mutations: T19R (green circle), R145H (pale blue triangle), E156del (green square), R158 (green cross), A222V (pale blue diamond). C.1.2 mutations: P9L (purple circle), C136F (purple triangle), Y449H (purple diamond). Omicron mutations: G339D (orange square), S371L (orange circle), S375F (orange triangle), G496S (orange diamond), Q493R (orange dot), Y505H (medium point orange circle), T547K (orange small triangle), Q954H (orange small diamond), N969K (orange small line), L981F (orange small x), S373P (orange hollow diamond), T376A (orange hollow triangle), D405N (small orange hollow triangle), E484A (small orange solid circle), Q498R (point orange circle), F486V (red circle), N658S (red square) and V3G (red triangle). Dots on the red line shows the timepoints of sample collection, absence of specific coloured lines means the mutation was not detected at that timepoint. A (Mdantsane plant), B (Eastbank plant) C (Brickfield plant) and D (Kwanobuhle plant).

The distribution of SARS-CoV-2 from wastewater has progressed from the predominance of Beta variant in January 2021, to Delta variant dominance (June 2021) to Omicron in early 2022 (Figure 6).

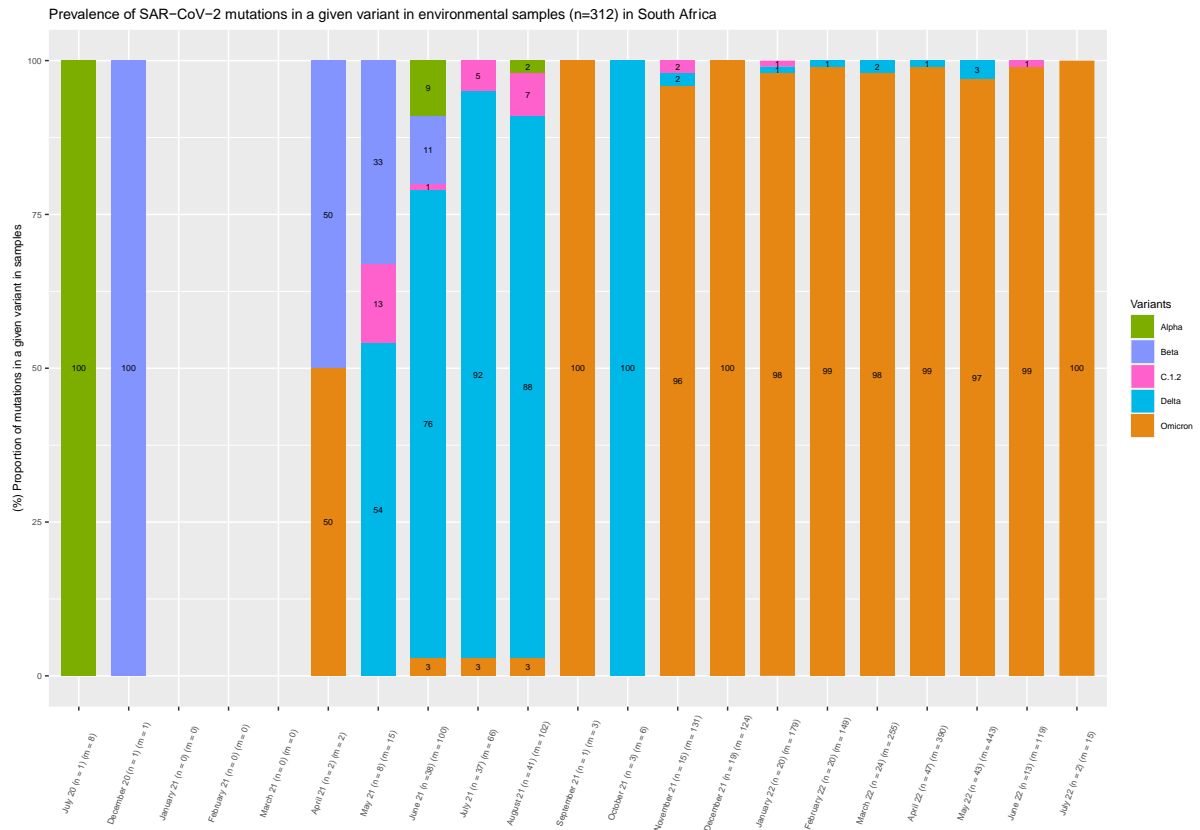


Figure 6. The proportion of mutations in a given variant in the environmental samples by month and year (January 2021-March 2022) from all South African provinces. The number of samples processed each month are indicated as n and the number of mutations present in a sample are represented as m *i.e.* n = 10 indicates that mutations were successfully detected 10 samples in May, 2021 and m = 12 indicates that 12 mutations were found in which 13% of the 12, are mutations in the alpha variant.

Limitations

The ability to identify variants in wastewater relies on the identification of single nucleotide polymorphisms found in clinical strains and which are uniquely associated with these variants. We are not yet able to detect new variants. Sequencing of SARS-CoV-2 from wastewater may not yield good quality sequence data when viral concentration in wastewater is low. However, SARS-CoV-2 data from wastewater at South African sentinel sites do show concordance with clinical, epidemiologic curves and sequencing data (not shown) in the respective locations, illustrating the potential of the SACCESS network to provide descriptive epidemiological data pertaining to geographic variation, burden and variants of SARS-CoV-2.

Conclusion

The SACCESS network of laboratories is able to provide population-level data regarding the distribution in time, place and burden of disease of SARS-CoV-2 and to identify currently circulating variants. These data from epidemiologic week 14 demonstrate the increased circulation of SARS-CoV-2 in Gauteng, Mangaung and KwaZulu-Natal (eThekweni) suggestive of a new variant. Sequencing data available up to week 27 shows the presence of Omicron variant in all recent samples across South Africa with evidence of the Omicron sub-variant BA.4 present in Johannesburg, Ekurhuleni, City of Tshwane, eThekweni, Eastern Cape and Free State. The significance of the emergence of mutations associated with Delta and C.1.2 variants is presently unclear, however these may be present in the new BA4 sub-variant. The quantitative and sequencing results must be read along with the SARS-CoV-2 reports generated by the Centre for Respiratory Diseases and Meningitis found at (https://www.nicd.ac.za/wp-content/uploads/2022/03/Update-of-SA-sequencing-data-from-GISAID-18-Mar-2022_2.pdf).

References

- Bhojar, R. C. *et al.* (2021) 'High throughput detection and genetic epidemiology of SARS-CoV-2 using COVIDSeq next-generation sequencing', *PLOS ONE*, 16(2), p. e0247115. Available at: <https://doi.org/10.1371/journal.pone.0247115>.
- Crits-Christoph, A. *et al.* (2021) 'Genome sequencing of sewage detects regionally prevalent SARS-CoV-2 variants', *MBio*, 12(1), pp. e02703-20.
- Gonzalez-Reiche, A. S. *et al.* (2020) 'Introductions and early spread of SARS-CoV-2 in the New York City area', *Science*, 369(6501), pp. 297–301.
- Ikner, L. A., Soto-Beltran, M. and Bright, K. R. (2011) 'New method using a positively charged microporous filter and ultrafiltration for concentration of viruses from tap water', *Applied and Environmental Microbiology*, 77(10), pp. 3500–3506.
- Khailany, R. A., Safdar, M. and Ozaslan, M. (2020) 'Genomic characterization of a novel SARS-CoV-2', *Gene*

reports, 19, p. 100682.

Lara, R. W. I. *et al.* (2020) 'Monitoring SARS-CoV-2 circulation and diversity through community wastewater sequencing', *medRxiv*.

RC, G. B. R. C. H. (2005) 'Burhans R Elnitski L Shah P Zhang Y Blankenberg D Albert I Taylor J 2005 Galaxy: a platform for interactive large-scale genome analysis', *Genome Research*, 15, pp. 1451–1455.

Acknowledgements

- The contributions of local government and wastewater treatment staff to sample collection and transport is acknowledged and appreciated.
- Students support with sample collections and processing the samples : Mr Thoriso Mooa, Ms Unarine Matodzi, Ms Phiwinhlanhla Nkosi – SAMRC-TB Platform
- The Water Research Commission is thanked for their vision and support.
- The NICD SARS-CoV-2 epidemiology and IT team members are thanked for sharing district and sub-district case burdens in order to generate graphs. These team members include Andronica Moipone Shonhiwa, Genevie Ntshoe, Joy Ebonwu, Lactatia Motsuku, Liliwe Shuping, Mazvita Muchengeti, Jackie Kleynhans, Gillian Hunt, Victor Odhiambo Olago, Husna Ismail, Nevashan Govender, Ann Mathews, Vivien Essel, Veerle Msimang, Tendesayi Kufa-Chakezha, Nkengafac Villyen Motaze, Natalie Mayet, Tebogo Mmaborwa Matjokotja, Mzimasi Neti, Tracy Arendse, Teresa Lamola, Itumeleng Matiea, Darren Muganhiri, Babongile Ndlovu, Khuliso Ravhuhali, Emelda Ramutshila, Salaminah Mhlanga, Akhona Mzoneli, Nimesh Naran, Trisha Whitbread, Mpho Moeti, Chidozie Iwu, Eva Mathatha, Fhatuwani Gavhi, Masingita Makamu, Matimba Makhubele, Simbulele Mdleleni, Tsumbedzo Mukange, Trevor Bell, Lincoln Darwin, Fazil McKenna, Ndivhuwo Munava, Muzammil Raza Bano, Themba Ngobeni.
- The NICD Centre for Respiratory Disease and Meningitis are thanked for their assistance in setting up and troubleshooting PCR testing, and ongoing supportive collaboration.
- Staff of SACCESS network laboratories are thanked for their assistance in generating these results.

Supplementary Table: Data for all wastewater treatment plants tested by SACCESS network

S/No	Wastewater plant name	Province	Metro or District	Official subdistrict SD or Local municipality	Subdistrict as represented on the graphs	Water service authority	Suburbs in drainage reticulation	Testing laboratory	Date quantitative testing started
1	Central	Eastern Cape	Buffalo City Local Municipality	Amathole district municipality	No subdistrict	Buffalo City Local Municipality	Wisonia, Dawn, Summer Pride, Amalinda Forest, Haven Hills, Buffalo flats ext, Scenery Park	Praecautio	20-10-2021
2	East Bank	Eastern Cape	Buffalo City Local Municipality	Amathole district municipality	No subdistrict	Buffalo City Local Municipality	Blue Bend, Bonza Bay, Nahoon, Beacon Bay	NICD	13-04-2021
3	Gonubie	Eastern Cape	Buffalo City Local Municipality	Amathole district municipality	No subdistrict	Buffalo City Local Municipality	Sunrise-on-Sea, Gonubie Manor, Thorn Ridge, Cyprus Dale, Bay View, Donny-brook, Gonubie, Gonubie Park	Praecautio	15-09-2021
4	Mdantsane	Eastern Cape	Buffalo City Local Municipality	Amathole district municipality	No subdistrict	Buffalo City Local Municipality	Mdantsane Newlands	NICD	01-06-2021

5	Potsdam	Eastern Cape	Buffalo City Local Municipality	Amathole district municipality	No subdistrict	Buffalo City Local Municipality	Zone 12 to Zone 18, Unit P, Potsdam, Khayelitsha, WSU Potsdam, Campus, Mbekweni	Praecautio	20-10-2021
6	Reeston	Eastern Cape	Buffalo City Local Municipality	Amathole district municipality	No subdistrict	Buffalo City Local Municipality	Reeston, Chicken Farm, Newlife	Praecautio	15-09-2021
7	West Bank	Eastern Cape	Buffalo City Local Municipality	Amathole district municipality	No subdistrict	Buffalo City Local Municipality	Duncan Village, Leach Bay, Nahoon	Praecautio	15-09-2021
8	Zwelitsha	Eastern Cape	Buffalo City Local Municipality	Amathole district municipality	No subdistrict	Buffalo City Local Municipality	Sweet Waters, Zwelitsha, Phakamisa, Ilitha Park	Praecautio	15-09-2021
9	Brickfield	Eastern Cape	Nelson Mandela Metropolitan Municipality	Nelson Mandela A SD	No subdistrict	Nelson Mandela Metropolitan Municipality	KwaNobuhle, Uitenhage, Van Riebeeckhoogte	NICD	13-04-2021
10	KwaNobuhle	Eastern Cape	Nelson Mandela Metropolitan Municipality	Nelson Mandela A SD	No subdistrict	Nelson Mandela Metropolitan Municipality	KwaNobuhle, Uitenhage	NICD	13-04-2021
11	Bainsvlei	Free State	Mangaung	Bloemfontein SD	Bloemfontein	Mangaung	Bloemfontein, Bain's Vlei	Lumegen	01-09-2021
12	Bloemspruit	Free State	Mangaung	Bloemfontein SD	Bloemfontein	Mangaung	Langenhoven Park, Bloemfontein	NICD	16-03-2021

13	Northeastern works	Free State	Mangaung	Bloemfontein SD	Bloemfontein	Mangaung	Bloemfontein Maselspoort, Rustig	Lumegen	01-09-2021
14	Sterkwater	Free State	Mangaung	Bloemfontein SD	Bloemfontein	Mangaung	Fontejntjie, Rooidam	NICD	16-03-2021
15	Botshabelo	Free State	Mangaung	Botshabelo SD	Botshabelo	Mangaung	Bonolo, Botshabelo, Poklenberg, Dankbaar, Roodekop	Lumegen	04-10-2021
16	Welvaart	Free State	Mangaung	Botshabelo SD	Botshabelo	Mangaung	Kagisanong, Fichardtpark, Bochebela, Phahameng, Generaal deWet, Willows, Batho, Rocklands, Universitas	Lumegen	09-09-2021
17	Northern Works	Free State	Mangaung	Bloemfontein SD	Bloemfontein	Mangaung	Midway, Bloemspruit, Grasslands	Lumegen	01-09-2021
18	Dewetsdorp	Free State	Mangaung	Naledi SD	Naledi and Thabanchu	Mangaung	Dewetsdorp, Frankfort, Glengary	Lumegen	01-09-2021
19	Thaba Nchu	Free State	Mangaung	Thaba N'chu SD	Naledi and Thabanchu	Mangaung	Thaba Nchu, Mokwena, Selosasha, Abramskraal, Roodekop, Strydom College, Bultfontein Number Three, Ratlau, Serwalo, Bultfontein Number One, Bultfontein Number Two, Motlala, Lusaka	Lumegen	01-09-2021

20	Ennerdale	Gauteng	City of Johannesburg Metropolitan Municipality	Johannesburg G SD	No subdistrict	City of Johannesburg Metropolitan Municipality	Walkerville, Hartsenbergfontein, Althea, Golfview, Blignautrus	NIOH	04-10-2021
21	Northern Wastewater Treatment Works	Gauteng	City of Johannesburg Metropolitan Municipality	Johannesburg A SD	No subdistrict	City of Johannesburg Metropolitan Municipality	Strydompark, Olivedale, Rivonia, Jukskei Park, Douglasdale, Ferndale, Lone Hill, Sandton, North Riding, Fourways, Paulshof	NICD	06-04-2021
22	Goudkoppies	Gauteng	City of Johannesburg Metropolitan Municipality	Johannesburg D SD	No subdistrict	City of Johannesburg Metropolitan Municipality	Soweto, Rivasdale	NICD	24-05-2021
23	Bushkoppies	Gauteng	City of Johannesburg Metropolitan Municipality	Johannesburg G SD	No subdistrict	City of Johannesburg Metropolitan Municipality	Baragwanath, Pimville, Johannesburg South, Dube, Willowdene, Nancefield	Waterlab/UP	11-10-2021
24	Olifantsvlei	Gauteng	City of Johannesburg Metropolitan Municipality	Johannesburg G SD	No subdistrict	City of Johannesburg Metropolitan Municipality	Soweto, Eldorado, Lenasia	Waterlab/UP	11-10-2021
25	Driefontein	Gauteng	City of Johannesburg	Mogale City LM	No subdistrict	City of Johannesburg	Kelvin, Morningside Manor, Edenburg, Lone	NIOH	04-10-2021

			Metropolitan Municipality			g Metropolitan Municipality	Hill, Rivonia, Sandton, Northdene, Fourways, Paulshof		
26	Bronkhorstpruit	Gauteng	City of Tshwane Metropolitan Municipality	Thembisile Hani LM	Tshwane North (sub-districts 3,4,6,7)	City of Tshwane Metropolitan Municipality	Wilgerivier, Wonderfontein, Graley Crown Douglas, Bronkhorst	Waterlab/UP	04-10-2021
27	Klipgat	Gauteng	City of Tshwane Metropolitan Municipality	Tshwane 1 SD	Tshwane North (sub-districts 1,2)	City of Tshwane Metropolitan Municipality	KlipgatBoekenhoutfontein, Soshanguve, Mabopane, Honeyvale, Boekenhoutfontein, Lebaleng	SAMRC-TB Platform	02-11-2021
28	Sandspruit	Gauteng	City of Tshwane Metropolitan Municipality	Tshwane 1 SD	Tshwane North (sub-districts 1,2)	City of Tshwane Metropolitan Municipality	Medunsa, Hebron, Rosslyn, Strydfontein, Hornsnek, Kruisfontein	Waterlab/UP	11-09-2021
29	Rooiwal Eastern Works	Gauteng	City of Tshwane Metropolitan Municipality	Tshwane 2 SD	Tshwane North (sub-districts 1,2)	City of Tshwane Metropolitan Municipality	Rooiwal, Pylpunt, Pyramid, Vasfontein, Petronella, Stil Gelee	NICD	23-03-2021
30	Temba	Gauteng	City of Tshwane Metropolitan Municipality	Tshwane 2 SD	Tshwane North (sub-districts 1,2)	City of Tshwane Metropolitan Municipality	Majanen, Hammanskraal, Mabopane, Soshanguve, Pyramid, Doornpoort	Waterlab/UP	26-09-2021
31	Daspoort Wastewater	Gauteng	City of Tshwane Metropolitan Municipality	Tshwane 3 SD	Tshwane North (sub-districts 3,4,6,7)	City of Tshwane	Groenkloof, Arcadia, Pretoria South, Gezina, Hercules, Rietfontein,	NICD	02-03-2021

	Treatment Works					Metropolitan Municipality	Pretoria Central, Sunnyside, Pretoria East, Prinshof, Daspoort, Villieria, Capital Park, Pretoria West, Wonderboom South, Pretoria-Wes, Innesdale		
32	Sunderland Ridge	Gauteng	City of Tshwane Metropolitan Municipality	Tshwane 4 SD	Tshwane North (sub-districts 3,4,6,7)	City of Tshwane Metropolitan Municipality	Centurion, Olivenhoutbosch and some parts of Midrand.	NIOH	18-08-2021
33	Babelegi	Gauteng	City of Tshwane Metropolitan Municipality	Tshwane 5 SD	Tshwane North (sub-districts 5)	City of Tshwane Metropolitan Municipality	Industrial sites	NIOH	18-08-2021
34	Baviaanspoort	Gauteng	City of Tshwane Metropolitan Municipality	Tshwane 5 SD	Tshwane North (sub-districts 5)	City of Tshwane Metropolitan Municipality	Elandsfontein, Cullinan, Sonderwater	NIOH	18-08-2021
35	Refilwe	Gauteng	City of Tshwane Metropolitan Municipality	Tshwane 5 SD	Tshwane North (sub-districts 5)	City of Tshwane Metropolitan Municipality	Cullinan	NIOH	05-10-2021
36	Zeekoegat	Gauteng	City of Tshwane Metropolitan Municipality	Tshwane 5 SD	Tshwane North (sub-districts 5)	City of Tshwane Metropolitan Municipality	Zeekoegat, Magalies Water, Buffelsdrif	Waterlab/UP	04-10-2021

37	Godrich	Gauteng	City of Tshwane Metropolitan Municipality	Tshwane 7 SD	Tshwane North (sub-districts 3,4,6,7)	City of Tshwane Metropolitan Municipality	Bronkspruit town Rhema Park Caltura park Venster Park Zithobeni	SAMRC-TB Platform	13-09-2021
38	Summer Place Package Plant	Gauteng	City of Tshwane Metropolitan Municipality	Tshwane 7 SD	Tshwane North (sub-districts 3,4,6,7)	City of Tshwane Metropolitan Municipality	Summerplace	SAMRC-TB Platform	01-09-2021
39	Rietgat	Gauteng	City of Tshwane Metropolitan Municipality	Tshwane 2 SD	Tshwane North (sub-districts 1,2)	City of Tshwane Metropolitan Municipality	Soshanguve	NIOH	05-10-2021
40	Thaba Tshwane	Gauteng	City of Tshwane Metropolitan Municipality	Tshwane 2 SD	Tshwane North (sub-districts 1,2)	City of Tshwane Metropolitan Municipality	Thaba Tshwane, Generaal Kemp Heuwel Radio Uitkyk	Waterlab/UP	05-01-2022
41	Daveyton WasteWater Treatment Works	Gauteng	Ekurhuleni Metropolitan Municipality	Ekurhuleni E1 SD	Ekurhuleni East (E1, E2)	Ekurhuleni Metropolitan Municipality	Welgedag, Persida	NICD and CSIR	NICD:02-03-2021 CSIR: 21-09-2021
42	Rynfield	Gauteng	Ekurhuleni Metropolitan Municipality	Ekurhuleni E1 SD	Ekurhuleni East (E1, E2)	Ekurhuleni Metropolitan Municipality	New Modder, Lakefield, Benoni, Boksburg, Northmead, Atl asville	CSIR	21-09-2021

43	Ancor	Gauteng	Ekurhuleni Metropolitan Municipality	Ekurhuleni E2 SD	Ekurhuleni East (E1, E2)	Ekurhuleni Metropolitan Municipality	Welgedag, Payneville, Selcourt, Casseldale, Springs	Waterlab/UP	21-09-2021
44	Carl Grundlingh	Gauteng	Ekurhuleni Metropolitan Municipality	Ekurhuleni E2 SD	Ekurhuleni East (E1, E2)	Ekurhuleni Metropolitan Municipality	Nigel, Bultfontein, Laversburg	CSIR	21-09-2021
45	Jan Smuts	Gauteng	Ekurhuleni Metropolitan Municipality	Ekurhuleni E2 SD	Ekurhuleni East (E1, E2)	Ekurhuleni Metropolitan Municipality	Dalpark, Brakpan, Dersley, Dalview, Benoni, New Modder, Schapenrust	CSIR	21-09-2021
46	Tsakane	Gauteng	Ekurhuleni Metropolitan Municipality	Ekurhuleni E2 SD	Ekurhuleni East (E1, E2)	Ekurhuleni Metropolitan Municipality	Benoni, Dersley, Dalpark, Brakpan, Dalview, Schapenrust	Waterlab/UP	05-10-2021
47	Welgedacht	Gauteng	Ekurhuleni Metropolitan Municipality	Ekurhuleni E2 SD	Ekurhuleni East (E1, E2)	Ekurhuleni Metropolitan Municipality	KwaThema, Brakpan, Dersley, Schapenrust	Waterlab/UP	21-09-2021
48	Hartebeesfontein WasteWater Treatment Works	Gauteng	Ekurhuleni Metropolitan Municipality	Ekurhuleni N1 SD	Ekurhuleni North (N1, N2)	Ekurhuleni Metropolitan Municipality	Mid-Ennerdale, Althea, Grasmeere, Elandsfontein	NICD Waterlab/UP	NICD:02-03-2021 Waterlab/UP : 05-10-2021
49	Herbert Bickley	Gauteng	Ekurhuleni Metropolitan Municipality	Ekurhuleni N1 SD	Ekurhuleni North (N1, N2)	Ekurhuleni Metropolitan Municipality	Jameson Park	CSIR	21-09-2021
50	Olifantsfontein in WasteWater	Gauteng	Ekurhuleni Metropolitan Municipality	Ekurhuleni N1 SD	Ekurhuleni North (N1, N2)	Ekurhuleni Metropolitan Municipality	Pinedene, Clayville, Tembisa, Midstream Estates, Olifantsfontein	CSIR and NICD	CSIR: 21-09-2021

	Treatment Works								NICD: 02-03-2021
51	Benoni	Gauteng	Ekurhuleni Metropolitan Municipality	Ekurhuleni N2 SD	Ekurhuleni North (N1, N2)	Ekurhuleni Metropolitan Municipality	Northmead, Dalpark, Dalview, Lakefield, Benoni, New Modder	Waterlab/UP	05-10-2021
52	J.P. Marais	Gauteng	Ekurhuleni Metropolitan Municipality	Ekurhuleni N2 SD	Ekurhuleni North (N1, N2)	Ekurhuleni Metropolitan Municipality	Northmead, Atlasville, New Modder, Lakefield, Benoni	CSIR	21-09-2021
53	Dekema	Gauteng	Ekurhuleni Metropolitan Municipality	Ekurhuleni S1 SD	Ekurhuleni South (S1, S2)	Ekurhuleni Metropolitan Municipality	Katlehong, Natalspruit, Randhart, Alrode	Waterlab/UP	05-10-2021
54	Rondebult	Gauteng	Ekurhuleni Metropolitan Municipality	Ekurhuleni S1 SD	Ekurhuleni South (S1, S2)	Ekurhuleni Metropolitan Municipality	Bartlett, Atlasville, Boksburg North, Lakefield, Bonaero Park, Ravenswood, Witfield, Boksburg	Waterlab/UP	21-09-2021
55	Vlakplaats WasteWater Treatment Works	Gauteng	Ekurhuleni Metropolitan Municipality	Ekurhuleni S2 SD	Ekurhuleni South (S1, S2)	Ekurhuleni Metropolitan Municipality	Vosloorus	NICD and CSIR	NICD: 22-02-2021 CSIR: 21-09-2021
56	Waterval WWTW	Gauteng	Ekurhuleni Metropolitan Municipality	Ekurhuleni S2 SD	Ekurhuleni South (S1, S2)	Ekurhuleni Metropolitan Municipality	Kliprivier, Henley on Klip, Ophir, Glen Donald, Chrissiefontein, Ro	Waterlab/UP	21-09-2021

							thdene, Riversdale, Meyerton Farms		
57	Flip Human	Gauteng	West Rand	West Rand *(Johannesburg C SD)	No Subdistrict	Mogale City Local Municipality	Rietvallei, Bhongwem, Brink's Vlakfontein	Waterlab/UP	12-10-2021
58	Magaliesburg	Gauteng	West Rand	West Rand (Mogale City LM)	No Subdistrict	Mogale City Local Municipality	Magaliesburg, Mogale City	Waterlab/UP	12-10-2021
59	Percy Steward	Gauteng	West Rand	West Rand (Mogale City LM)	No Subdistrict	Mogale City Local Municipality	Lewisham, Krugersdorp North	Waterlab/UP	12-10-2021
60	Hammarsdale	Kwazulu Natal	eThekweni Metropolitan Municipality	eThekweni MM Sub	eThekweni West	eThekweni Metropolitan Municipality	Hammarsdale, Elangeni, Mpumalanga	GreenHill	02-09-2021
61	Hillcrest	Kwazulu Natal	eThekweni Metropolitan Municipality	eThekweni MM Sub	eThekweni West	eThekweni Metropolitan Municipality	New Germany, Pinetown, Clermont, Pinelands, KwaDabeka	GreenHill	02-09-2021
62	Isipingo	Kwazulu Natal	eThekweni Metropolitan Municipality	eThekweni MM Sub	eThekweni South	eThekweni Metropolitan Municipality	Umbogintwini, Malukaze, Egolokodo, KwaMakhutha, Umlazi	DUT	10-08-2021
63	Central	Kwazulu Natal	eThekweni Metropolitan Municipality	eThekweni MM Sub	eThekweni North	eThekweni Metropolitan Municipality	Brighton Beach, Grosvenor, King's Rest, Ocean View, Fynnland and Treasure Beach	NICD and DUT	NICD: 22-02-2021 DUT: 10-08-2021 for

64	KwaMashu	KwazuluNatal	eThekwini Metropolitan Municipality	eThekwini MM Sub	eThekwini South	eThekwini Metropolitan Municipality	La Lucia, Umhlanga, Prestonsdale, Phoenix, Duff's Road, Glen Ashley, Mount Edgecombe	DUT	10-08-2021
65	Northern	KwazuluNatal	eThekwini Metropolitan Municipality	eThekwini MM Sub	eThekwini North	eThekwini Metropolitan Municipality	Newlands, KwaMashu, Greenwood Park, Park Hill	NICD	22-02-2021
66	Phoenix	KwazuluNatal	eThekwini Metropolitan Municipality	eThekwini MM Sub	eThekwini South	eThekwini Metropolitan Municipality	Rietrivier, KwaMashu, Duff's Road, Mount Edgecombe, Phoenix, Richmond, Inanda	DUT	10-08-2021
67	Frasers	KwazuluNatal	eThekwini Metropolitan Municipality	eThekwini MM Sub	eThekwini North	iLembe District municipality	Salt Rock, Ballitoville, Umhlali, Fraser, Zimbali, Shaka's Rock, Ballito	Waterlab/UP	11-10-2021
68	Umbilo	KwazuluNatal	eThekwini Metropolitan Municipality	eThekwini MM Sub	eThekwini North	eThekwini Metropolitan Municipality	Acorn, Albany, Alexander Park	GreenHill	28-10-2021
69	Darvill	KwazuluNatal	uMgungundlovu District municipality	Msunduzi LM	No subdistrict	The Msunduzi Local Municipality	Pelham, Hayfields, New England, Northdale, Hay Paddock, Scottsville, Cleland, Bishopstowe, Sobantu	GreenHill	02-09-2021
70	Lynfield Park	KwazuluNatal	uMgungundlovu	Msunduzi LM	No subdistrict	The Msunduzi Local Municipality	Thornville, Hayfields, Hay Paddock, Lynnfield Park, Cleland	GreenHill	02-09-2021

			District municipality						
71	Mpofana	KwazuluNatal	Umgungundlovu District municipality	Mpofana LM	No subdistrict	Mpofana Local Municipality	Bruntville, Brown Stones, Windy, Weston, Moorivier	Waterlab/UP	28-09-2021
72	Howick	KwazuluNatal	Umgungundlovu District municipality	uMngeni LM	No subdistrict	UMgungundlovu District municipality	Riversdale, Merrivale, Cedara	GreenHill	02-09-2021
73	Polokwane	Limpopo	Capricorn District municipality	Polokwane LM	No subdistrict	Polokwane Local Municipality	Westenburg, Nirvana, Bendor, Welgelegen, Moregloed, Annadale, Ivydale, Flora Park, Fauna Park, Penina Park, Ivy Park, Ster Park, Dalmada, Broadlands, Woodlands, and Thornhill	Lumegen: /Waterlab/UP	Lumegen: 02-08-2021 Waterlab/UP: 11-10-2021
74	Lebowakgomo	Limpopo	Capricorn District municipality	Lepelle-Nkumpi LM	No subdistrict	Lepelle-Nkumpi LM	Thabamoopo, Vaalboschlagte, Lekhuswaneng, Moepeng, Makurung, Sekurwaneng, Ga-Matshela, Makurun	Waterlab/UP	12-10-2021
75	Emalahleni (Riverview)	Mpumalanga	Nkangala District Municipality	Emalahleni LM	No subdistrict	Emalahleni LM	Lynnville, Duvhapark, Paxton, Klipfontein	Lumegen	26-07-2021

76	Kanyamazane	Mpumalanga	Ehlanzeni District	City of Mbombela LM	No subdistrict	Mbombela/Umjindi	Daantjielokasie, eNyamazani	Waterlab/UP	30-03-2021
77	Mbombela (Kingstonvale)	Mpumalanga	Ehlanzeni District	Mbombela/Umjindi	No subdistrict	Mbombela/Umjindi	Gutshwa, eMpumalanga, eNyalungu, Dwaleni, Hlauhlu, Phasha, Ngodini	Lumegen	26-07-2021
78	Calvinia	Northern Cape	Namakwa	Hantam Local Municipality	No subdistrict	Hantam Local Municipality	Calvinia	NICD	06-07-2021
79	Homevale Kimberley	Northern Cape	Frances Baard	Sol Plaatjie Local Municipality	No subdistrict	Sol Plaatjie Local Municipality	Remount Camp, Kenilworth, Homevale	Lumegen	28-08-2021
80	Potchefstroom	NorthWest	JB Marks Local Municipality	JB Marks LM	No subdistrict	JB Marks Local Municipality	Harpington, Vyfhoek, Mooibank, Wilgeboom	Lumegen	17-08-2021
81	Klerksdorp main	NorthWest	Matlosana Local Municipality	City of Matlosana LM	No subdistrict	Matlosana Local Municipality	Boetrand, Wilkoppies	Lumegen	02-08-2021
82	Rustenburg	NorthWest	Bojanala Platinum	Rustenburg Local Municipality	No subdistrict	Rustenburg Local Municipality	Rustenburg	Lumegen and Waterlab/UP	Lumgen: 26-07-2021 Waterlab: 11-10-2021
83	Bellville	Western Cape	City of Cape Town Metropolitan Municipality	CT Northern SD	No subdistrict	City of Cape Town Metropolitan Municipality	Parow, Belhar, Brackenfell	MRC-BRIP	Not testing quantitatively

84	Cape Flats	Western Cape	City of Cape Town Metropolitan Municipality	CT Southern SD	No subdistrict	City of Cape Town Metropolitan Municipality	Khayelitsha, Mitchells Plain	Waterlab/UP	06-10-2022
85	Athlone	Western Cape	City of Cape Town Metropolitan Municipality	CT Tygerberg	No subdistrict	City of Cape Town Metropolitan Municipality	Crawford, Gleemore, Rondenbosch East	Waterlab/UP	06-10-2021
86	Borchard's Quarry	Western Cape	City of Cape Town Metropolitan Municipality	CT Tygerberg SD	No subdistrict	City of Cape Town Metropolitan Municipality	Belhar, Elsiesrivier	NICD	09-03-2021
87	Zandvliet	Western Cape	City of Cape Town Metropolitan Municipality	Stellenbosch LM	No subdistrict	City of Cape Town Metropolitan Municipality	Faure, Macassar, Somerset West	NICD	09-03-2021