

COVID-19 Hospital Surveillance

Update: Week 37, 2022

Overview of report

This report summarises data of COVID-19 cases admitted to hospital surveillance sites in all provinces. The report is based on data collected from 5 March 2020 to 17 September 2022.

Highlights

- There was a 23% decrease in the number of new admissions in week 37 2022 (170) compared to the number of admissions in week 36 2022 (221). Delays in reporting of admissions and deaths may affect the numbers reported in the most recent week.
- Gauteng had the highest number of admissions in the past week (79/170, 46.5%), followed by Western Cape (32/170, 18.8%) and KwaZulu-Natal (27/170, 15.9%). There was no admission in Northern Cape in the past week.
- The highest weekly incidence risk of COVID-19 admissions reported in week 37 of 2022 was in the ≥65-year age group (1.3 admissions per 100 000 persons), and the lowest weekly incidence risk were in <20-year age group (0.1 admissions per 100 000 persons).

Methods

Data on hospitalisation was accessed from DATCOV, a hospital surveillance system for COVID-19 admissions, initiated on the 1 April 2020. A COVID-19 case was defined as a person with a positive reverse transcriptase polymerase chain reaction (RT-PCR) assay for SARS-CoV-2 or a person who had a positive SARS-CoV-2 antigen test who was admitted to hospital.

Data on SARS-CoV-2 cases diagnosed in public and private laboratories submitted to the NICD were reported from the line list on the NMCSS.

Case fatality ratio (CFR) was calculated for all closed cases, i.e. COVID-19 deaths divided by COVID-19 deaths plus COVID-19 discharges, excluding individuals who are still admitted in hospital. For the calculation of cumulative incidence risks, StatsSA mid-year population estimates for 2021 were utilised. For comparisons of change in admission, we used 14-day daily average admissions in the current 14-day period compared to the previous 14-day period.

Severity was defined as patients receiving oxygen or invasive ventilation, treated in high care or intensive care wards, developing acute respiratory distress syndrome, or died. While oxygen, ventilation and ward of stay variables are updated daily for all admissions in the private sector, there may be delays with the data being updated in the public sector. Also, as patients remain in hospital their condition may change and percentage of severity may change over time.

Data are submitted by public and private hospitals that have agreed to report COVID-19 admissions through DATCOV surveillance in all nine provinces of South Africa. On 15 July 2020, the National Health Council decided that all hospitals should report to DATCOV. As of 17 September 2022, a total of 669 facilities submitted data on hospitalised COVID-19 cases, 408 from public sector and 262 from private sector (Table 1). This reflects 100% coverage of all public and private hospitals that have had COVID-19 admissions. As new hospitals join the surveillance system, they have retrospectively captured all admissions recorded although there may be some backlogs in retrospective data capture.

Table 1: Number of hospitals reporting data on COVID-19 admissions by province and sector, South Africa, 5 March 2020-17 September 2022.

Facilities reporting	Public	Private
Eastern Cape	86	18
Free State	35	20
Gauteng	39	99
KwaZulu-Natal	71	47
Limpopo	41	7
Mpumalanga	31	9
North West	17	13
Northern Cape	29	6
Western Cape	59	43
South Africa	408	262

Results

Epidemiological and demographic trends in admissions

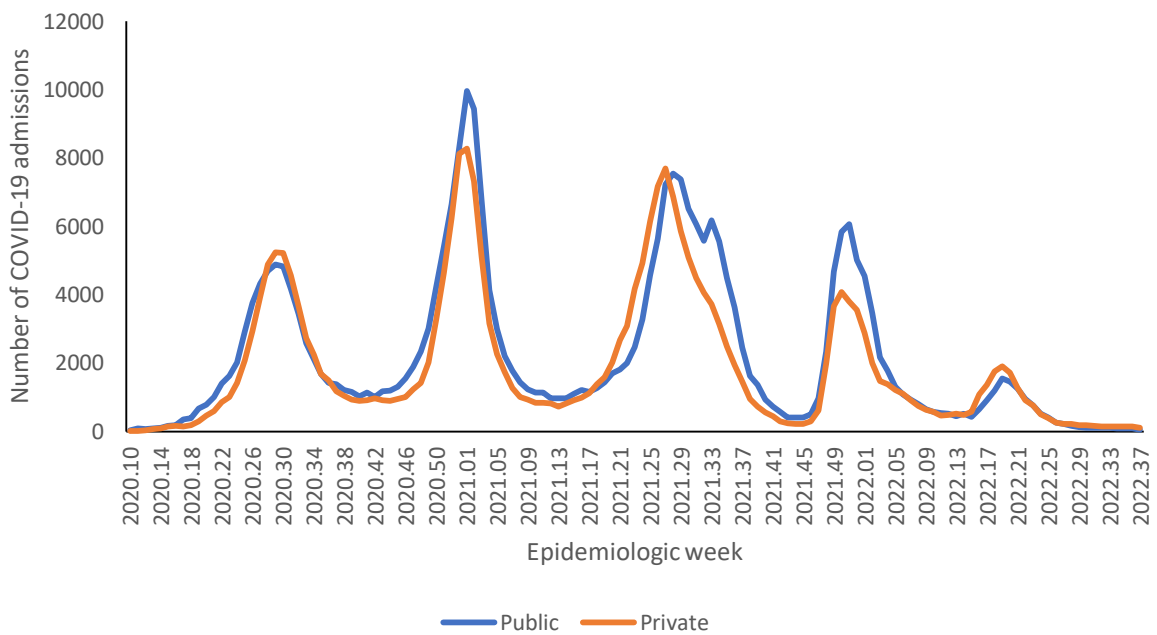


Figure 1: Number of reported COVID-19 admissions by health sector and epidemiologic week of diagnosis, South Africa, 5 March 2020-17 September 2022, N=543,146

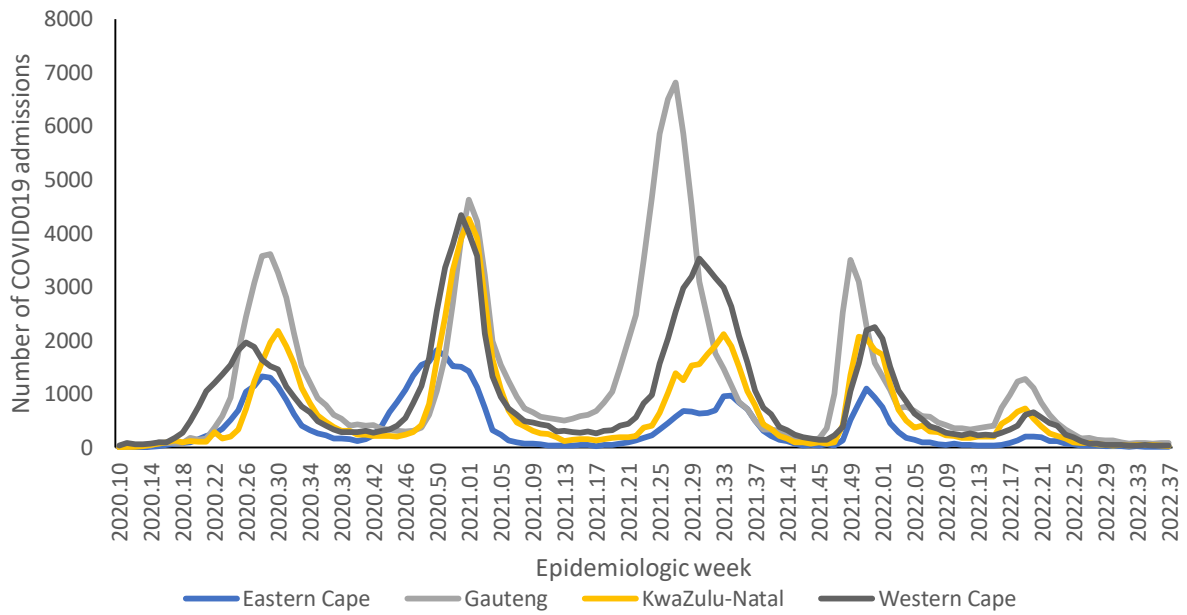


Figure 2a: Number of reported COVID-19 admissions, by provinces with highest admissions and epidemiologic week of diagnosis, South Africa, 5 March 2020-17 September 2022, N=543,146

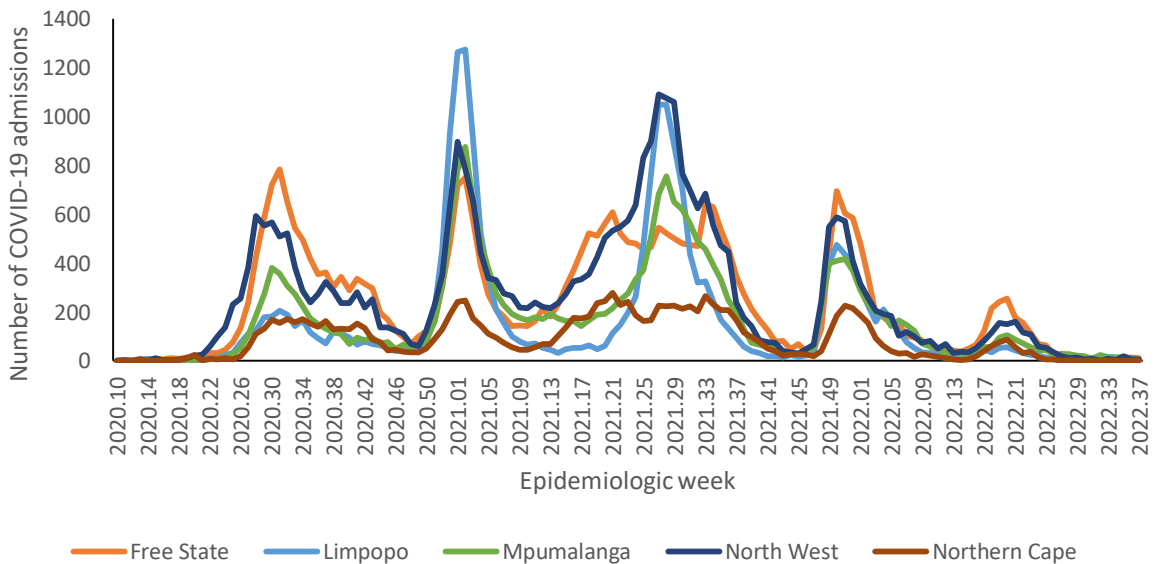


Figure 2b: Number of reported COVID-19 admissions, by provinces with lowest admissions and epidemiologic week of diagnosis, South Africa, 5 March 2020-17 September 2022, N=543,146

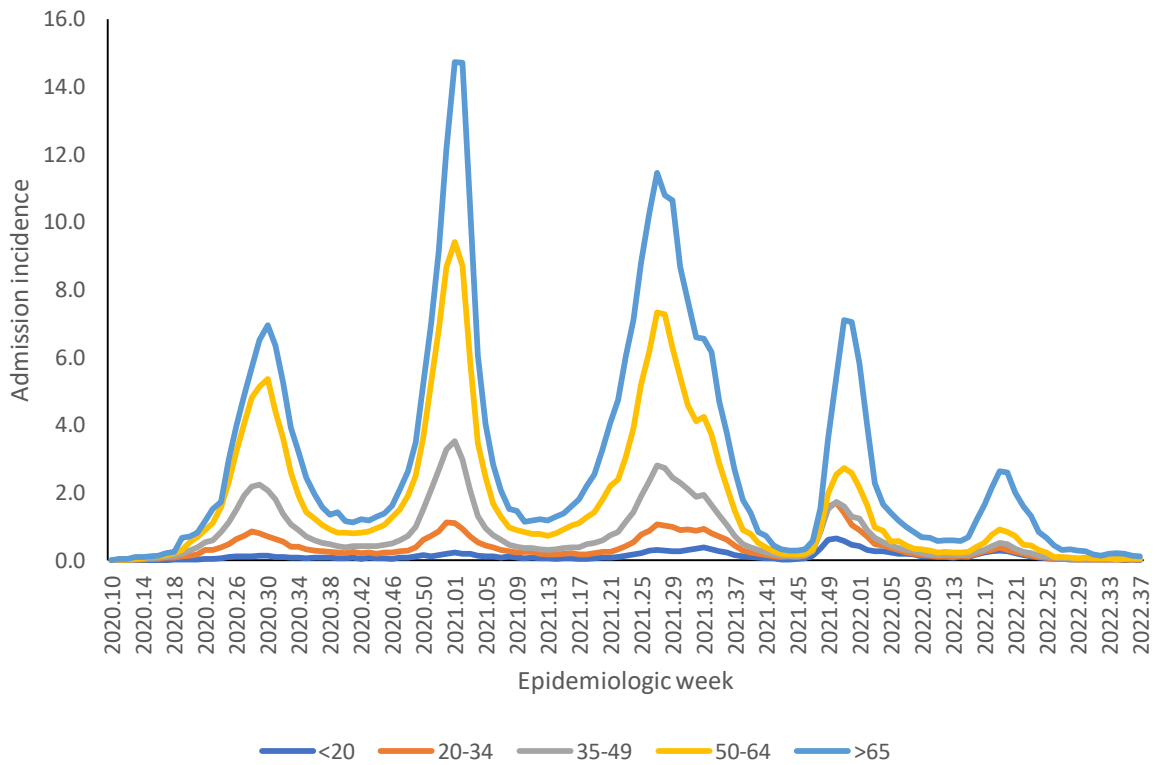


Figure 3: Incidence risk of COVID-19 admissions per 100,000 persons, by age group and epidemiologic week of diagnosis, South Africa, 5 March 2020-17 September 2022, N=543,146

Epidemiological and demographic trends in in-hospital mortality

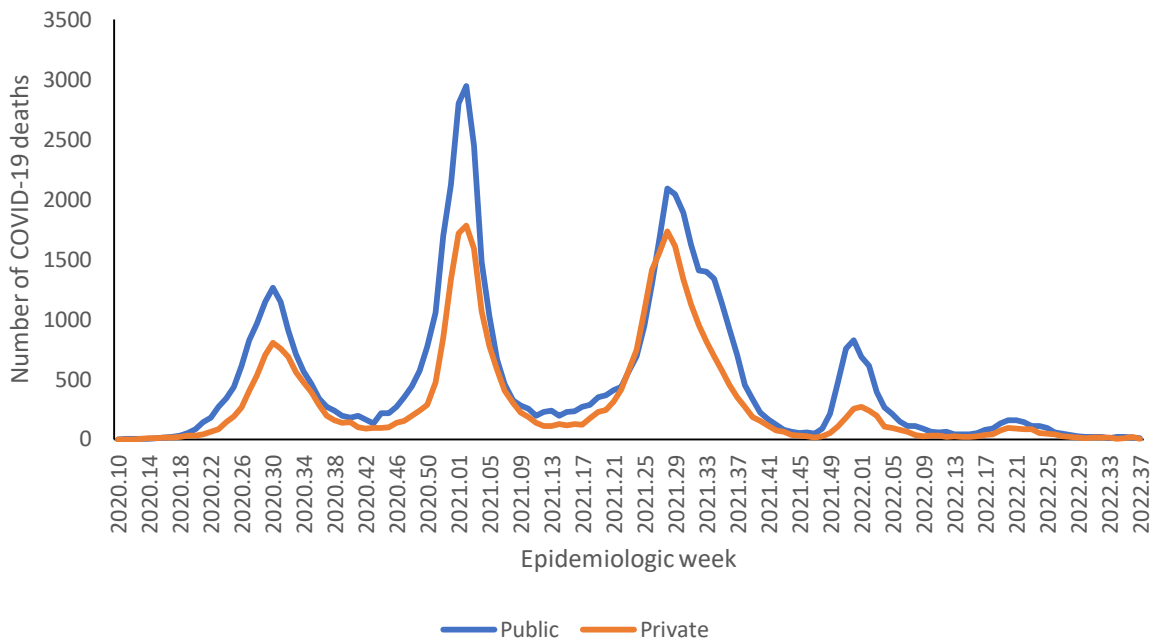


Figure 4: Number of reported COVID-19 in-hospital deaths, by health sector and epidemiologic week, South Africa, 5 March 2020-17 September 2022, N=104,366

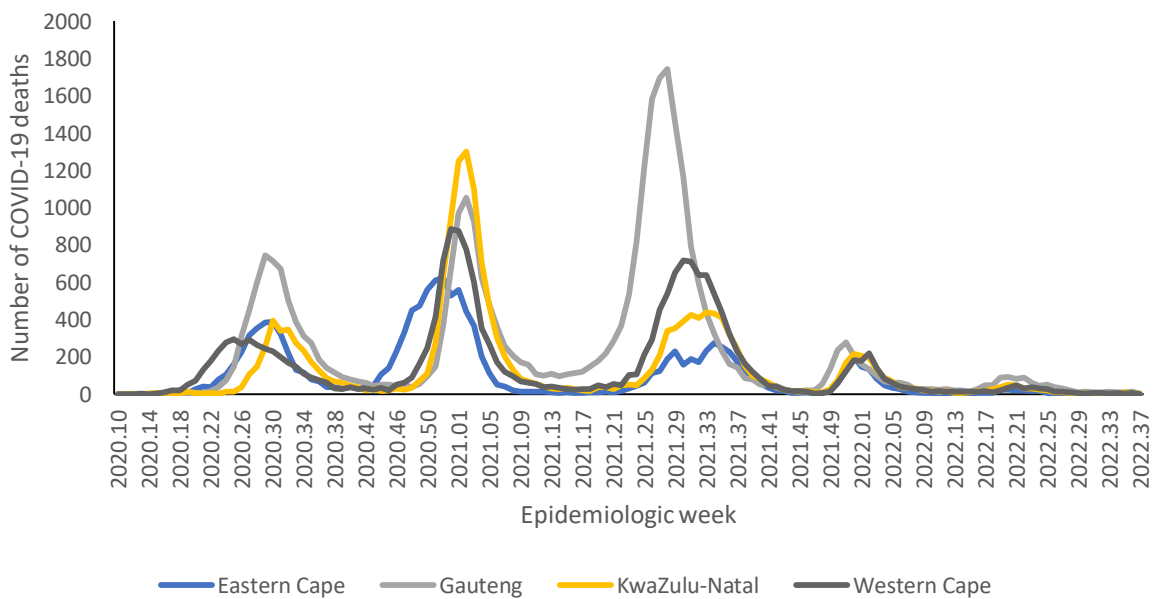


Figure 5a: Number of reported COVID-19 in-hospital deaths, by province with highest deaths and epidemiologic week of death, South Africa, 5 March 2020-17 September 2022, N=104,366

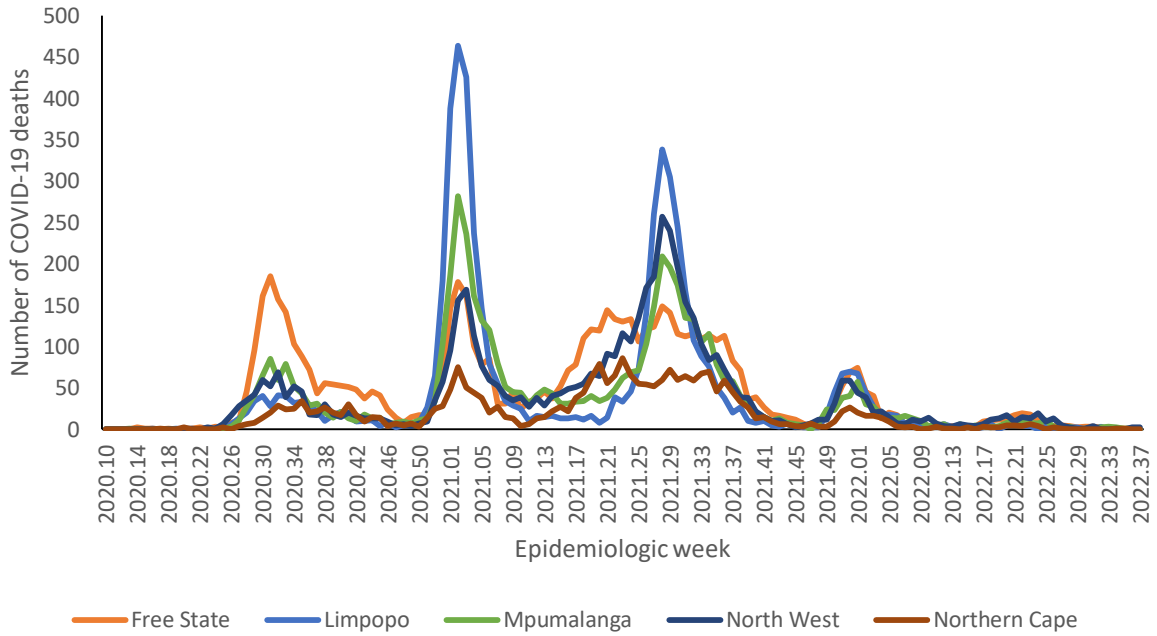


Figure 5b: Number of reported COVID-19 in-hospital deaths, by province with lowest deaths and epidemiologic week of death, South Africa, 5 March 2020-17 September 2022, N=104,366

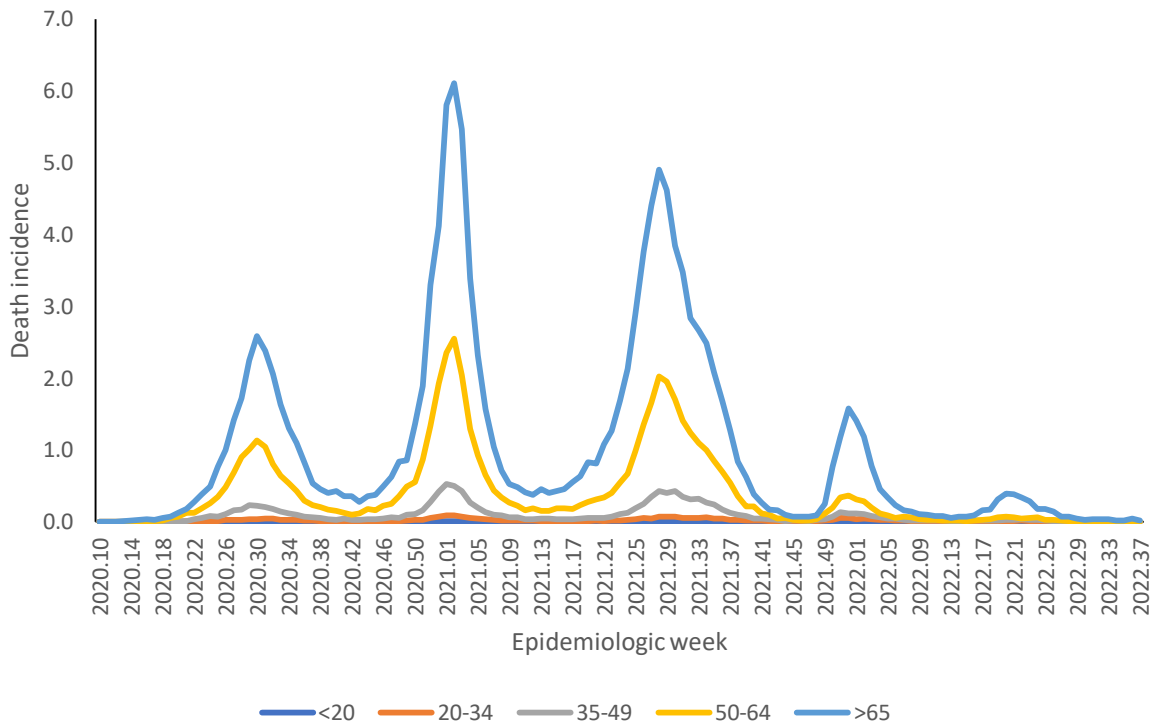


Figure 6: Incidence risk of COVID-19 in-hospital deaths per 100,000 persons, by age group and epidemiologic week of death, South Africa, 5 March 2020-17 September 2022, N=104,366

Provincial trends

Table 2: Number and cumulative incidence risk of COVID-19 hospitalisations and in-hospital deaths per 100,000 persons by province, South Africa, 5 March 2020-17 September 2022.

Province	Provincial Population mid 2020*	Cumulative admissions	Cumulative incidence risk of admissions / 100,000	Cumulative deaths	Cumulative incidence risk of deaths / 100,000
Eastern Cape	6676590	48844	731.6	13305	199.3
Free State	2932441	32707	1115.4	6156	209.9
Gauteng	15810388	160 305	1013.9	30656	193.9
KwaZulu-Natal	11513575	89471	777.1	17588	152.8
Limpopo	5926724	21222	358.1	5344	90.2
Mpumalanga	4743584	23066	486.3	4930	103.9
North West	4122854	34 436	835.2	5021	121.8
Northern Cape	1303047	11 940	916.3	2462	188.9
Western Cape	7113776	121 155	1703.1	18904	265.7
South Africa	60142978	543 146	903.1	104 366	173.5

*StatsSA mid-year population estimates 2020

Table 3: Previous 14 days and current 14 days daily average COVID-19 admissions and deaths and percentage changes, South Africa, 20 August-17 September 2022.

Province	Hospital admissions		Percentage change in admissions	Hospital deaths		Percentage change in deaths
	Previous 14 days average admissions	Current 14 days average admissions		Previous 14 days average deaths	Current 14 days average deaths	
Eastern Cape	2.29	1.64	-28.13	0.14	0.14	0.00
Free State	1.93	1.93	0.00	0.14	0.07	-50.00
Gauteng	11.00	11.71	6.49	1.50	1.43	-4.76
KwaZulu-Natal	6.29	4.86	-22.73	0.71	0.57	-20.00
Limpopo	1.57	1.07	-31.82	0.00	0.00	0.00
Mpumalanga	2.21	0.93	-58.06	0.21	0.07	-66.67
North West	1.71	0.71	-58.33	0.07	0.29	300.00
Northern Cape	0.07	0.00	-100.00	0.14	0.00	-100.00
Western Cape	5.79	5.07	-12.35	0.57	0.43	-25.00

* Reporting of new admissions in the most recent week may be delayed

Table 4: Previous 7 days and current 7 days daily average COVID-19 admissions and deaths and percentage changes, South Africa, 3 September-17 September 2022.

Province	Hospital admissions		Percentage change in admissions	Hospital deaths		Percentage change in deaths
	Previous 7 days average admissions	Current 7 days average admissions		Previous 7 days average deaths	Current 7 days average deaths	
Eastern Cape	2.14	1.14	-46.67	0.00	0.29	0.00
Free State	2.14	1.71	-20.00	0.14	0.00	-100.00
Gauteng	12.14	11.29	-7.06	2.14	0.71	-66.67
KwaZulu-Natal	5.86	3.86	-34.15	0.71	0.43	-40.00
Limpopo	1.71	0.43	-75.00	0.00	0.00	0.00
Mpumalanga	1.29	0.57	-55.56	0.14	0.00	-100.00
North West	0.71	0.71	0.00	0.29	0.29	0.00
Northern Cape	0.00	0.00	0.00	0.00	0.00	0.00
Western Cape	5.57	4.57	-17.95	0.86	0.00	-100.00

* Reporting of new admissions in the most recent week may be delayed

Eastern Cape

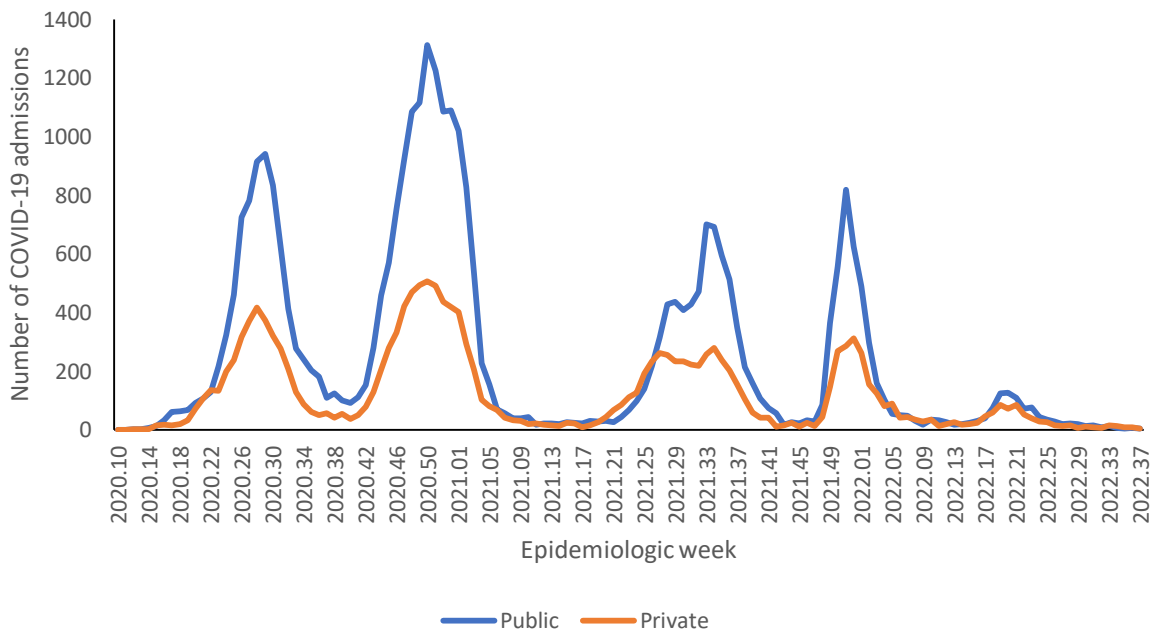


Figure 7: Number of reported COVID-19 admissions by health sector and epidemiologic week of diagnosis, Eastern Cape, 5 March 2020-17 September 2022, N=48,844

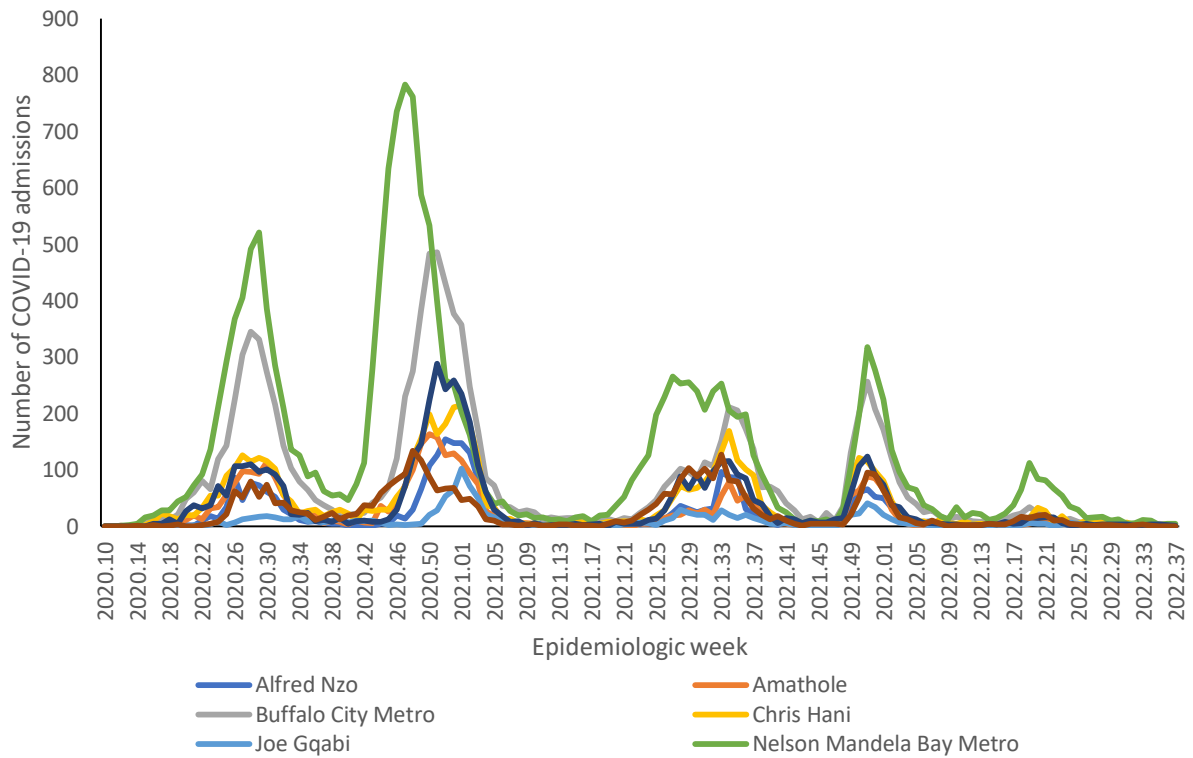


Figure 8: Number of reported COVID-19 admissions, by district and epidemiologic week, Eastern Cape, 5 March 2020-17 September 2022, N=48,844

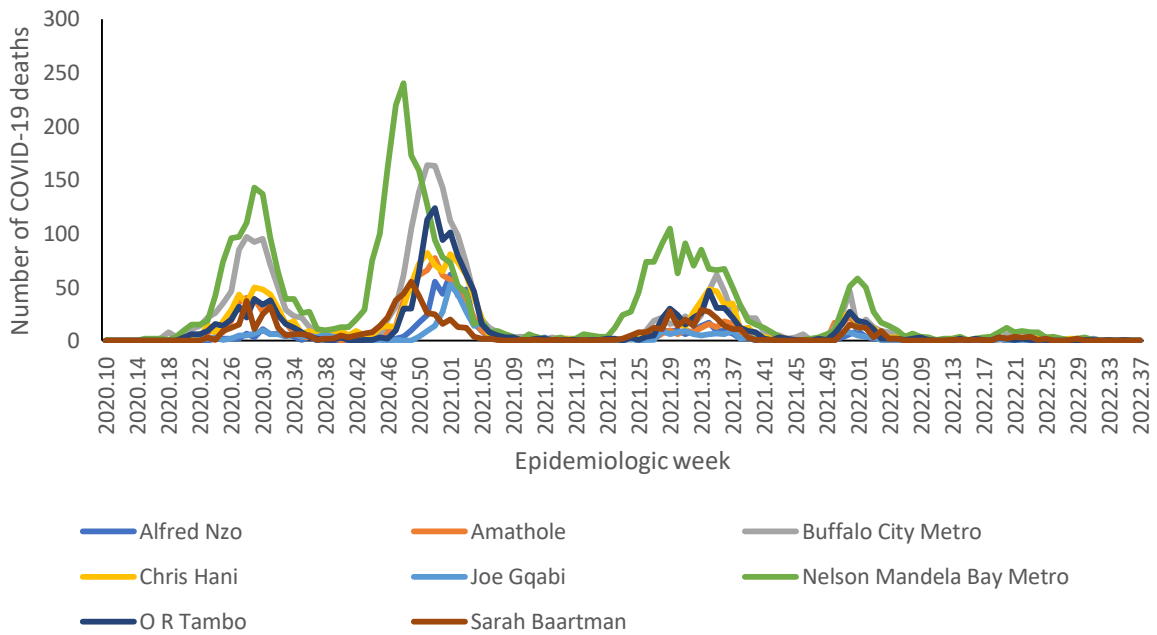


Figure 9: Number of reported COVID-19 in-hospital deaths, by district and epidemiologic week, Eastern Cape, 5 March 2020-17 September 2022, N=13,305

Table 5: Previous 14 days and current 14 days average COVID-19 admissions and deaths and percentage changes, Eastern Cape, 20 August-17 September 2022.

District	Previous 14 days admissions average	Current 14 days admissions average	Percentage change in admissions	Previous 14 days deaths average	Current 14 days deaths average	Percentage change in deaths
Alfred Nzo	0.07	0.07	0.00	0.00	0.00	0.00
Amathole	0.07	0.14	100.00	0.00	0.07	0.00
Buffalo City Metro	0.43	0.29	-33.33	0.00	0.07	0.00
Chris Hani	0.21	0.29	33.33	0.00	0.00	0.00
Joe Gqabi	0.14	0.07	-50.00	0.07	0.00	-100.00
Nelson Mandela Bay	0.86	0.57	-33.33	0.00	0.00	0.00
O R Tambo	0.43	0.21	-50.00	0.07	0.00	-100.00
Sarah Baartman	0.07	0.00	-100.00	0.00	0.00	0.00

Free State

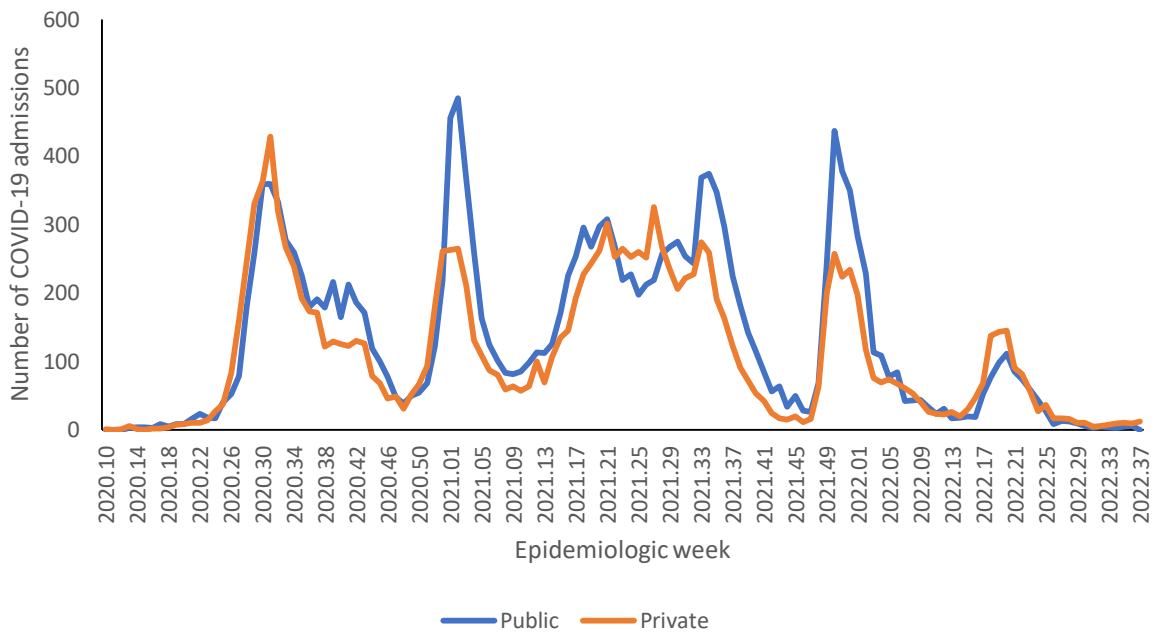


Figure 10: Number of reported COVID-19 admissions by health sector and epidemiologic week of diagnosis, Free State, 5 March 2020-17 September 2022, N=32,707

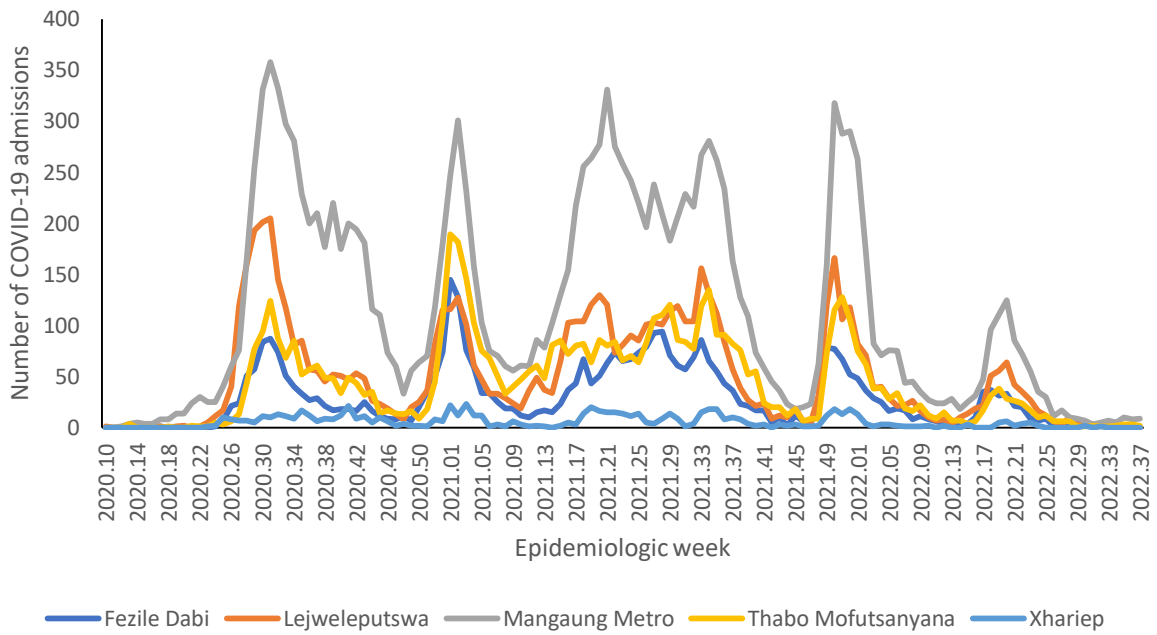


Figure 11: Number of reported COVID-19 admissions, by district and epidemiologic week, Free State, 5 March 2020-17 September 2022, N=32,707

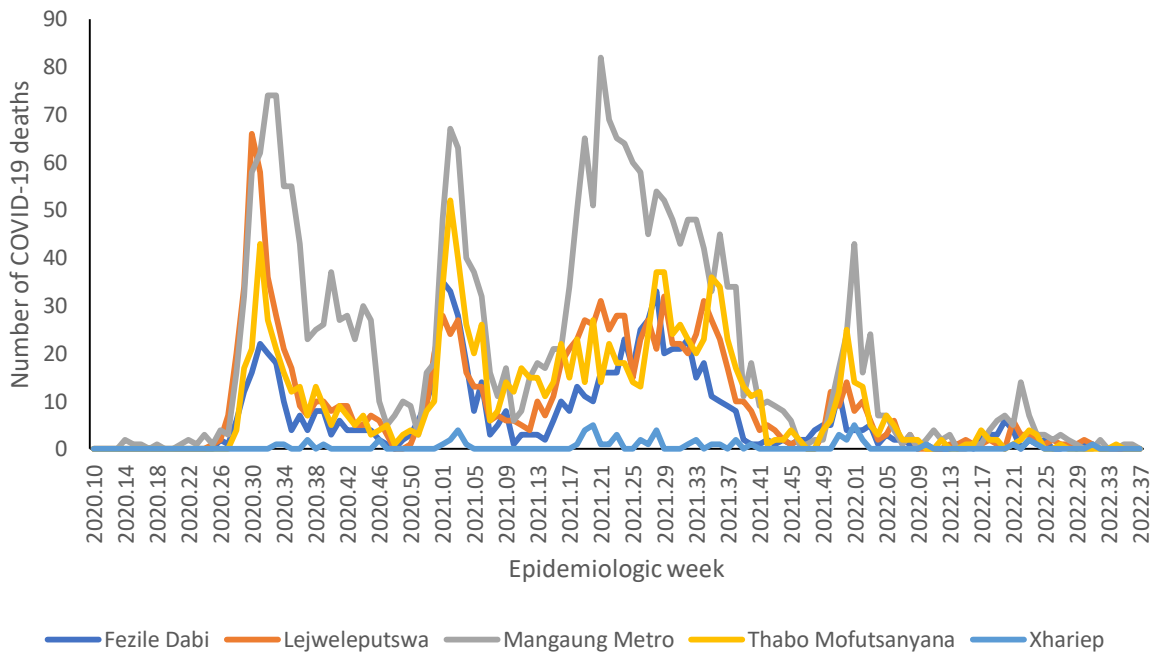


Figure 12: Number of reported COVID-19 in-hospital deaths, by district and epidemiologic week, Free State, 5 March 2020-17 September 2022, N=6,156



Table 6: Previous 14 days and current 14 days average COVID-19 admissions and deaths and percentage changes, Free State, 20 August-17 September 2022.

District	Previous 14 days admissions average	Current 14 days admissions average	Percentage change in admissions	Previous 14 days deaths average	Current 14 days deaths average	Percentage change in deaths
Fezile Dabi	0.14	0.21	50.00	0.00	0.00	0.00
Lejweleputswa	0.36	0.14	-60.00	0.00	0.00	0.00
Mangaung Metro	1.07	1.21	13.33	0.07	0.07	0.00
Thabo Mofutsanyana	0.36	0.36	0.00	0.07	0.00	-100.00
Xhariep	0.00	0.00	0.00	0.00	0.00	0.00



Gauteng

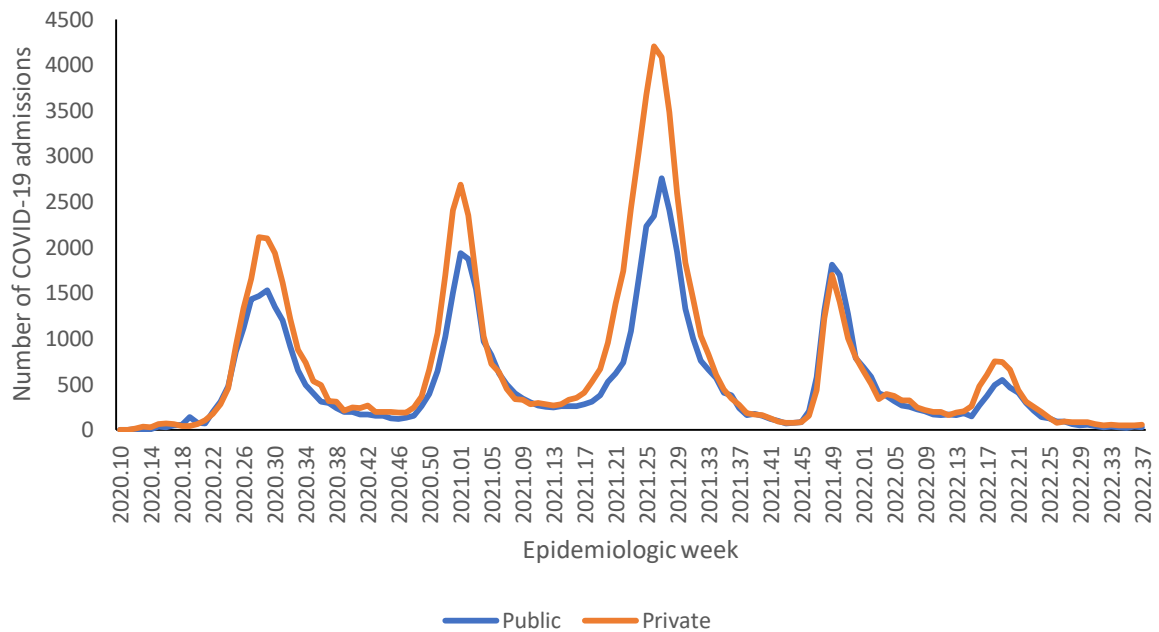


Figure 13: Number of reported COVID-19 admissions by health sector and epidemiologic week of diagnosis, Gauteng, 5 March 2020-17 September 2022, N=160,305

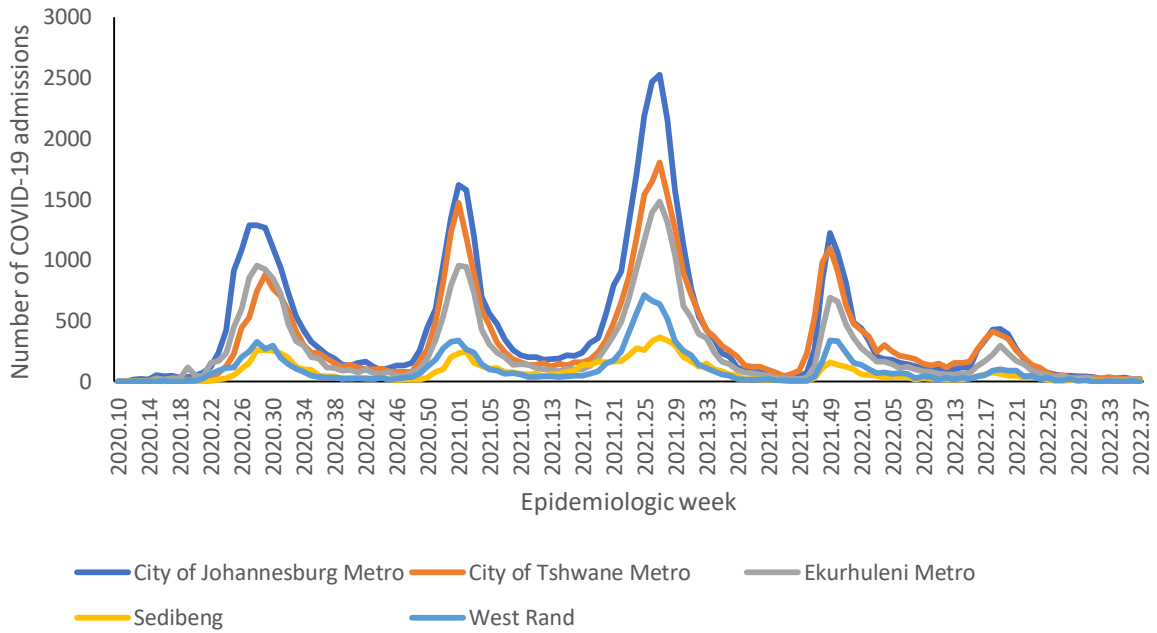


Figure 14: Number of reported COVID-19 admissions, by district and epidemiologic week, Gauteng, 5 March 2020-17 September 2022, N=160,305

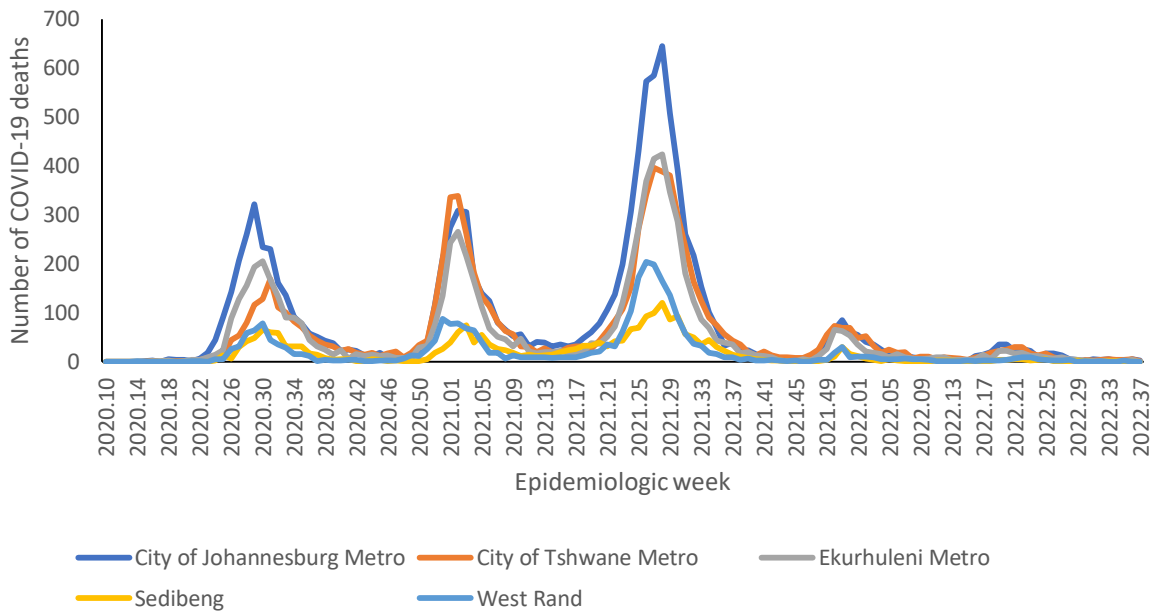


Figure 15: Number of reported COVID-19 in-hospital deaths, by district and epidemiologic week, Gauteng, 5 March 2020-17 September 2022, N=30,656

Table 7: Previous 14 days and current 14 days average COVID-19 admissions and deaths and percentage changes, Gauteng, 20 August-17 September 2022.

District	Previous 14 days admissions average	Current 14 days admissions average	Percentage change in admissions	Previous 14 days deaths average	Current 14 days deaths average	Percentage change in deaths
City of Johannesburg Metro	4.79	3.43	-28.36	0.29	0.64	125.00
City of Tshwane Metro	3.43	3.50	2.08	0.57	0.50	-12.50
Ekurhuleni Metro	1.93	3.00	55.56	0.21	0.29	33.33
Sedibeng	0.57	1.07	87.50	0.21	0.00	-100.00
West Rand	0.29	0.71	150.00	0.21	0.00	-100.00

KwaZulu-Natal

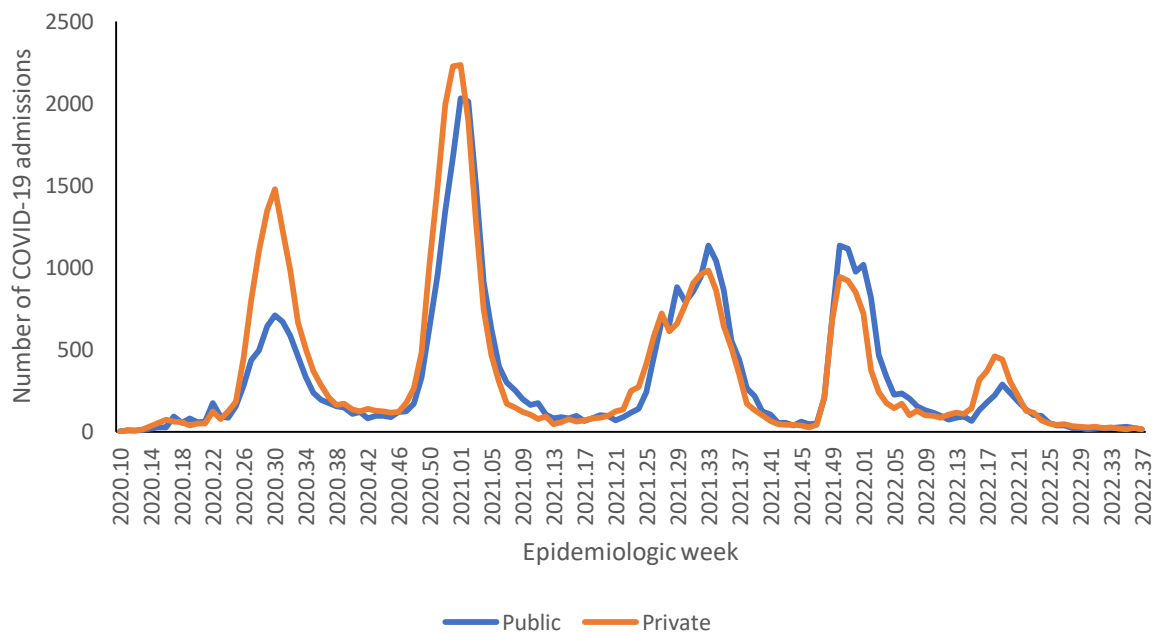


Figure 16: Number of reported COVID-19 admissions by health sector and epidemiologic week of diagnosis, KwaZulu-Natal, 5 March 2020-17 September 2022, N=89,471

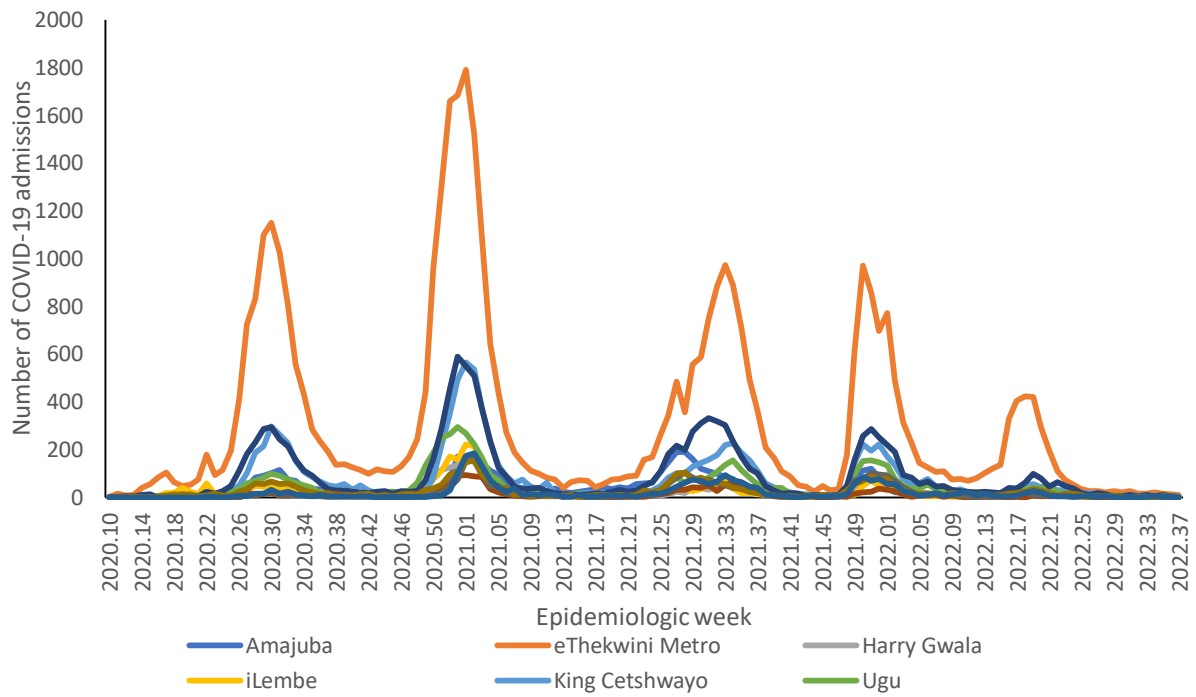


Figure 17: Number of reported COVID-19 admissions, by district and epidemiologic week, KwaZulu-Natal, 5 March 2020-17 September 2022, N=89,471

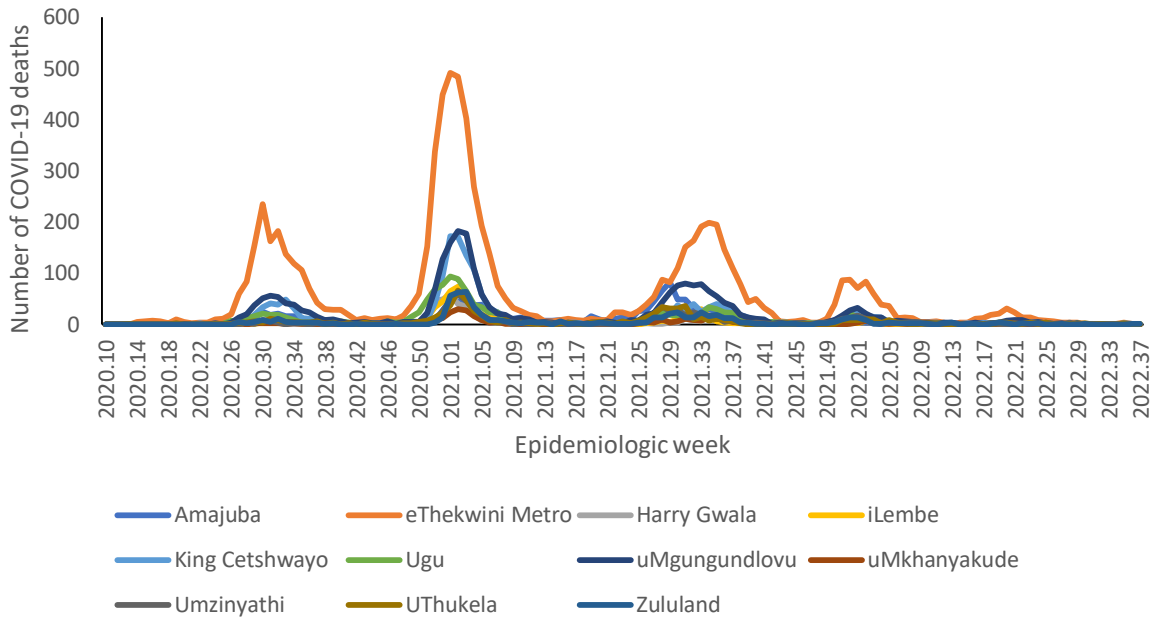


Figure 18: Number of reported COVID-19 in-hospital deaths, by district and epidemiologic week, KwaZulu-Natal, 5 March 2020-17 September 2022, N=17,588

Table 8: Previous 14 days and current 14 days average COVID-19 admissions and deaths and percentage changes, KwaZulu-Natal, 20 August-17 September 2022.

District	Previous 14 days admissions average	Current 14 days admissions average	Percentage change in admissions	Previous 14 days deaths average	Current 14 days deaths average	Percentage change in deaths
Amajuba	0.21	0.36	66.67	0.00	0.07	0.00
eThekweni Metro	2.57	1.57	-38.89	0.36	0.14	-60.00
Harry Gwala	0.64	0.64	0.00	0.07	0.00	-100.00
iLembe	0.14	0.21	50.00	0.00	0.00	0.00
King Cetshwayo	0.50	0.64	28.57	0.07	0.07	0.00
Ugu	0.71	0.50	-30.00	0.00	0.07	0.00
uMgungundlovu	0.93	0.36	-61.54	0.07	0.07	0.00
uMkhanyakude	0.00	0.00	0.00	0.00	0.00	0.00
Umzinyathi	0.00	0.14	0.00	0.00	0.00	0.00
UThukela	0.29	0.29	0.00	0.14	0.00	-100.00
Zululand	0.29	0.14	-50.00	0.00	0.14	0.00

Limpopo

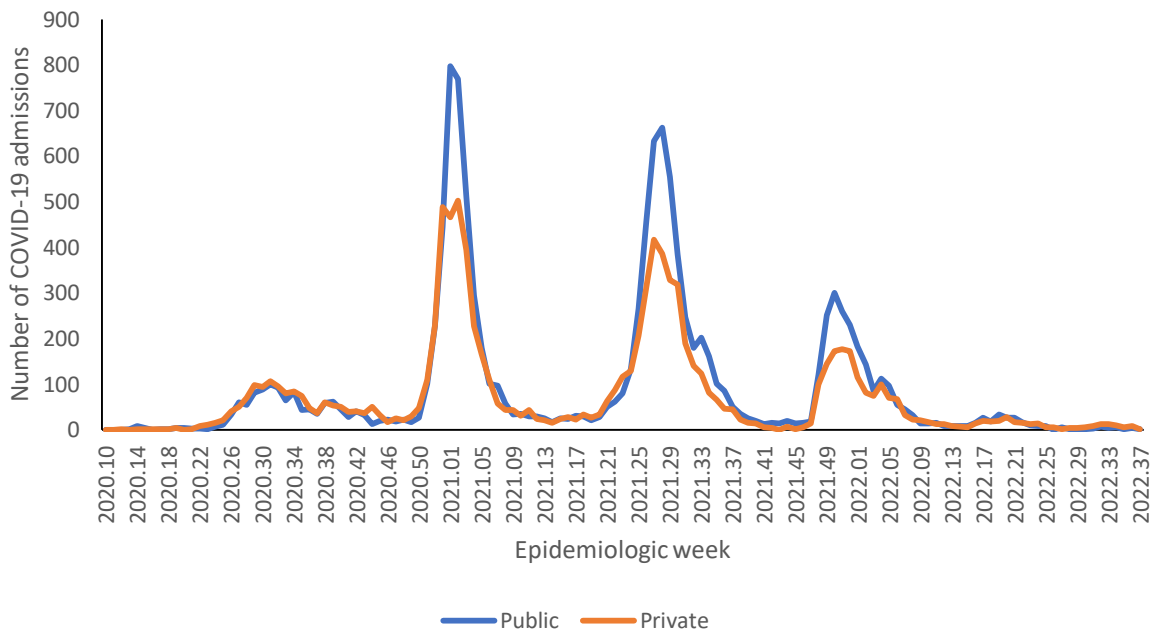


Figure 19: Number of reported COVID-19 admissions by health sector and epidemiologic week of diagnosis, Limpopo, 5 March 2020-17 September 2022, N=21,222

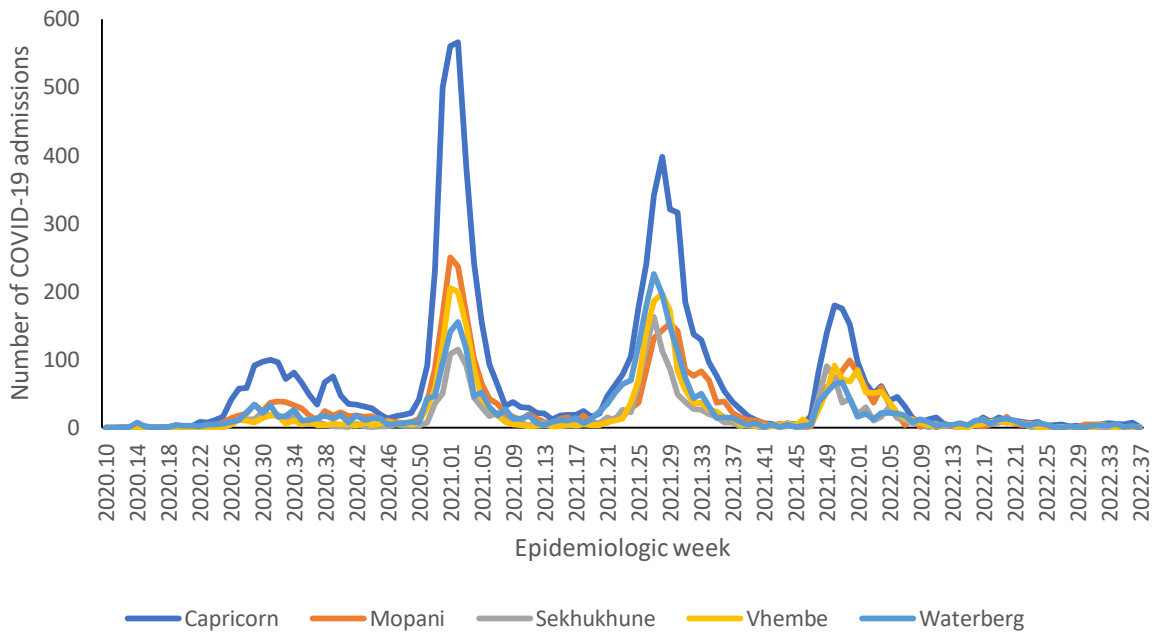


Figure 20: Number of reported COVID-19 admissions, by district and epidemiologic week, Limpopo, 5 March 2020-17 September 2022, N=21,222

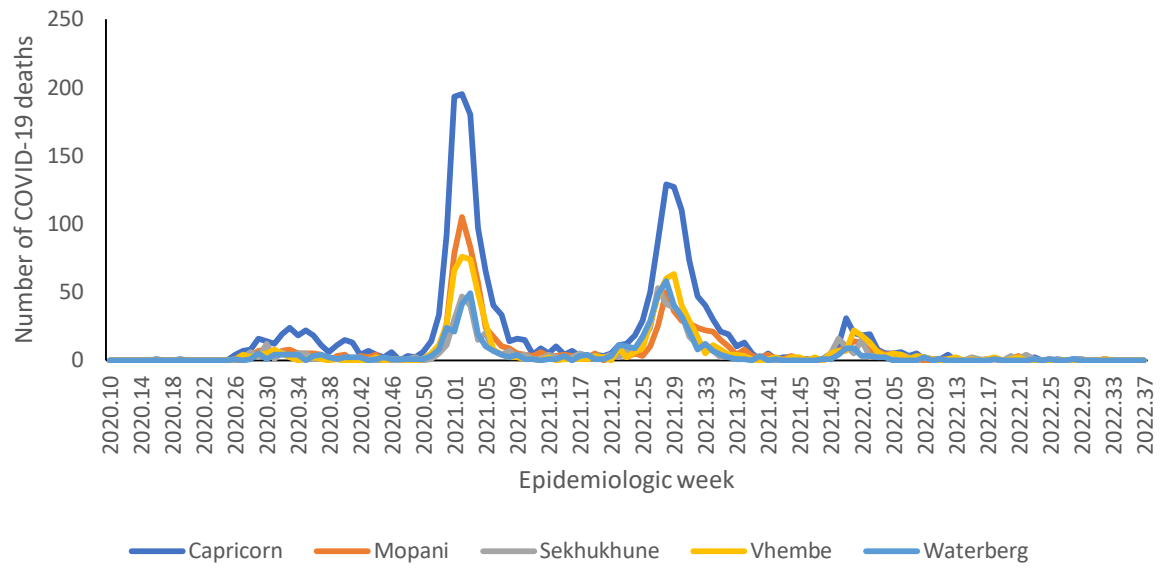


Figure 21: Number of reported COVID-19 in-hospital deaths, by district and epidemiologic week, Limpopo, 5 March 2020-17 September 2022, N=5,344

Table 9: Previous 14 days and current 14 days average COVID-19 admissions and deaths and percentage changes, Limpopo, 20 August-17 September 2022.

District	Previous 14 days admissions average	Current 14 days admissions average	Percentage change in admissions	Previous 14 days deaths average	Current 14 days deaths average	Percentage change in deaths
Capricorn	0.79	0.64	-18.18	0.00	0.00	0.00
Mopani	0.21	0.07	-66.67	0.00	0.00	0.00
Sekhukhune	0.07	0.00	-100.00	0.00	0.00	0.00
Vhembe	0.00	0.14	0.00	0.00	0.00	0.00
Waterberg	0.50	0.21	-57.14	0.00	0.00	0.00

Mpumalanga

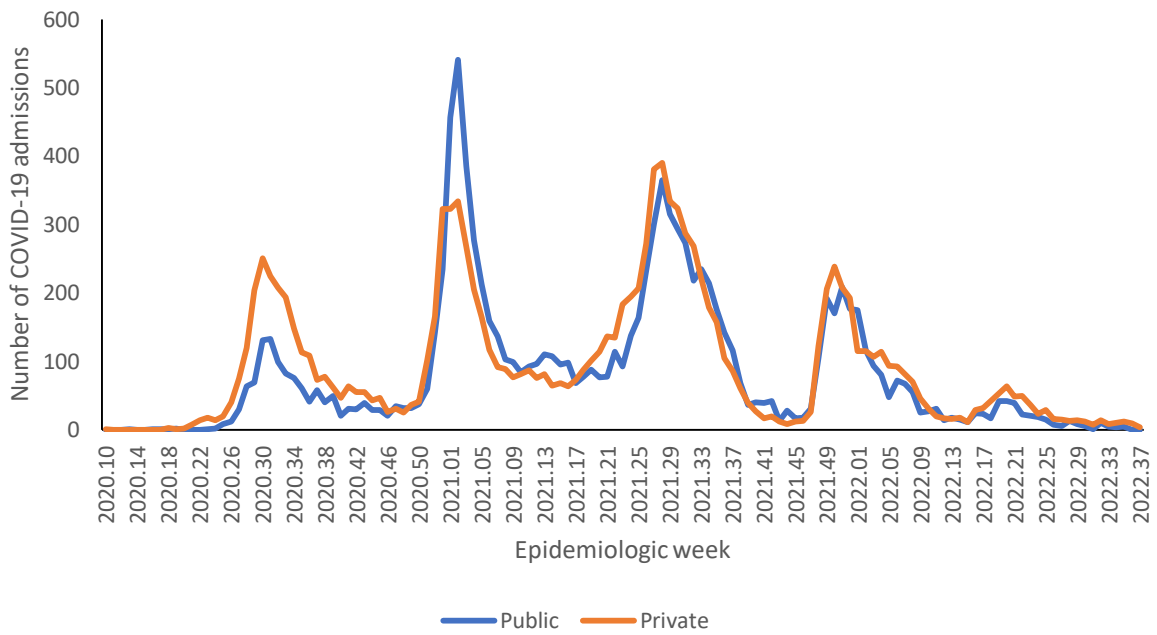


Figure 22: Number of reported COVID-19 admissions by health sector and epidemiologic week of diagnosis, Mpumalanga, 5 March 2020-17 September 2022, N=23,066

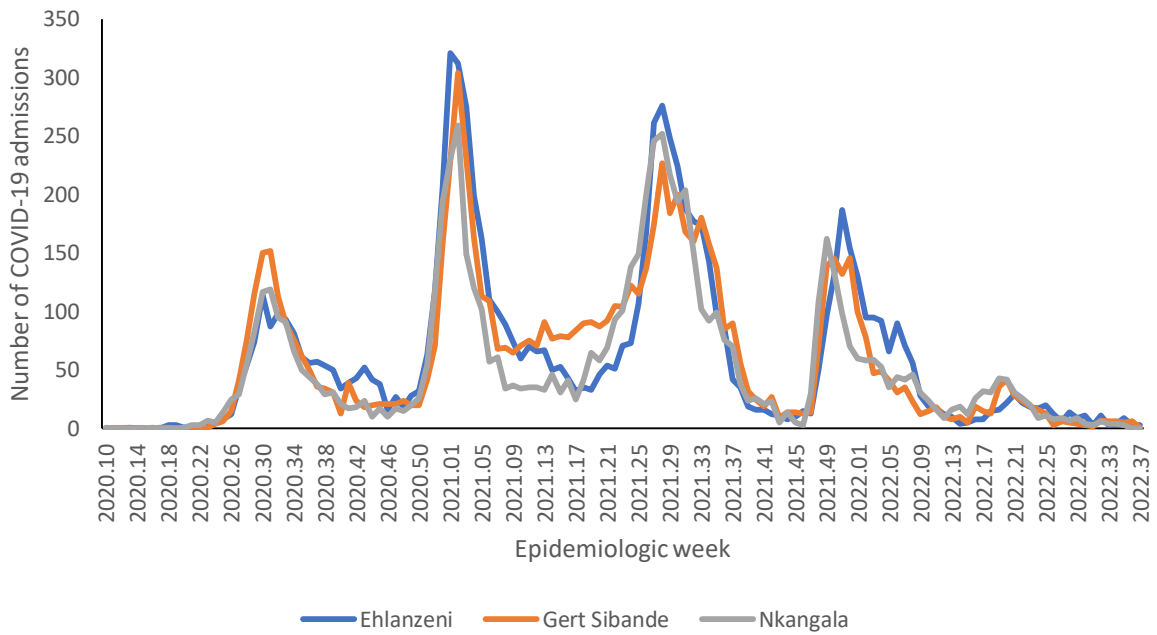


Figure 23: Number of reported COVID-19 admissions, by district and epidemiologic week, Mpumalanga, 5 March 2020-17 September 2022, N=23,066

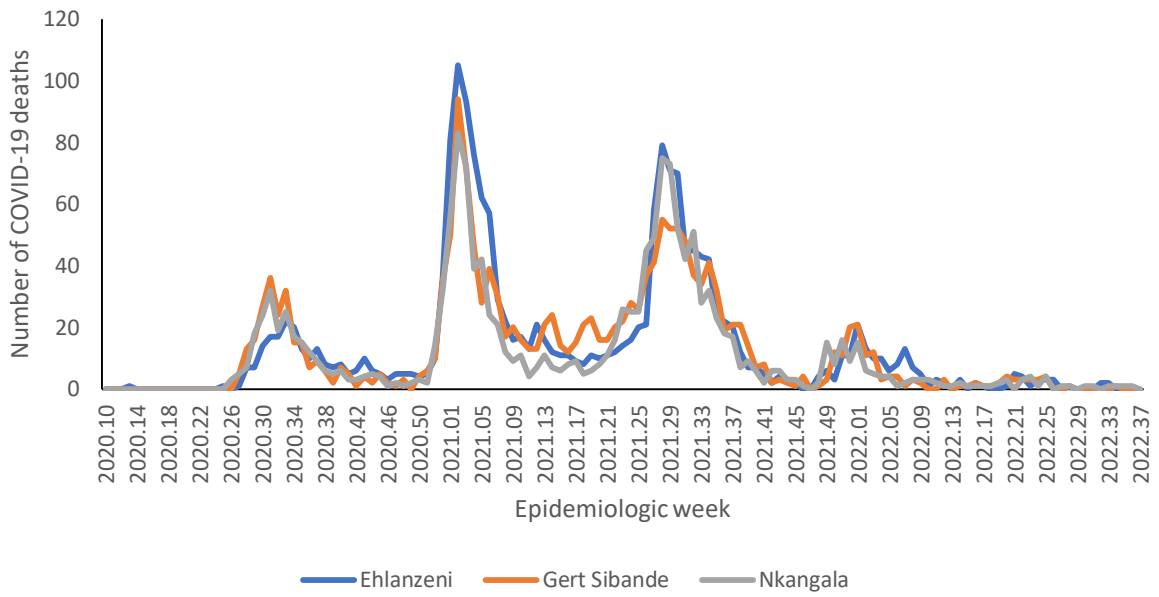


Figure 24: Number of reported COVID-19 in-hospital deaths, by district and epidemiologic week, Mpumalanga, 5 March 2020-17 September 2022, N=4,930

Table 10: Previous 14 days and current 14 days average COVID-19 admissions and deaths and percentage changes, Mpumalanga, 20 August-17 September 2022.

District	Previous 14 days admissions average	Current 14 days admissions average	Percentage change in admissions	Previous 14 days deaths average	Current 14 days deaths average	Percentage change in deaths
Ehlanzeni	0.93	0.43	-53.85	0.00	0.00	0.00
Gert Sibande	0.79	0.50	-36.36	0.07	0.00	-100.00
Nkangala	0.50	0.00	-100.00	0.14	0.07	-50.00



North West

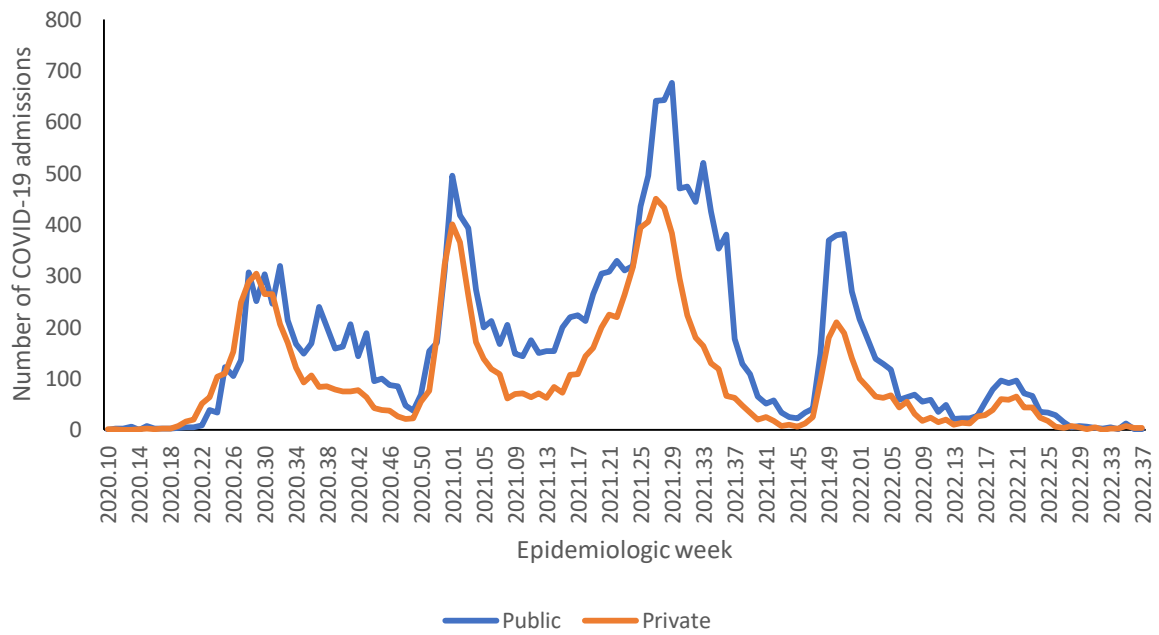


Figure 25: Number of reported COVID-19 admissions by health sector and epidemiologic week of diagnosis, North West, 5 March 2020-17 September 2022, N=34,436

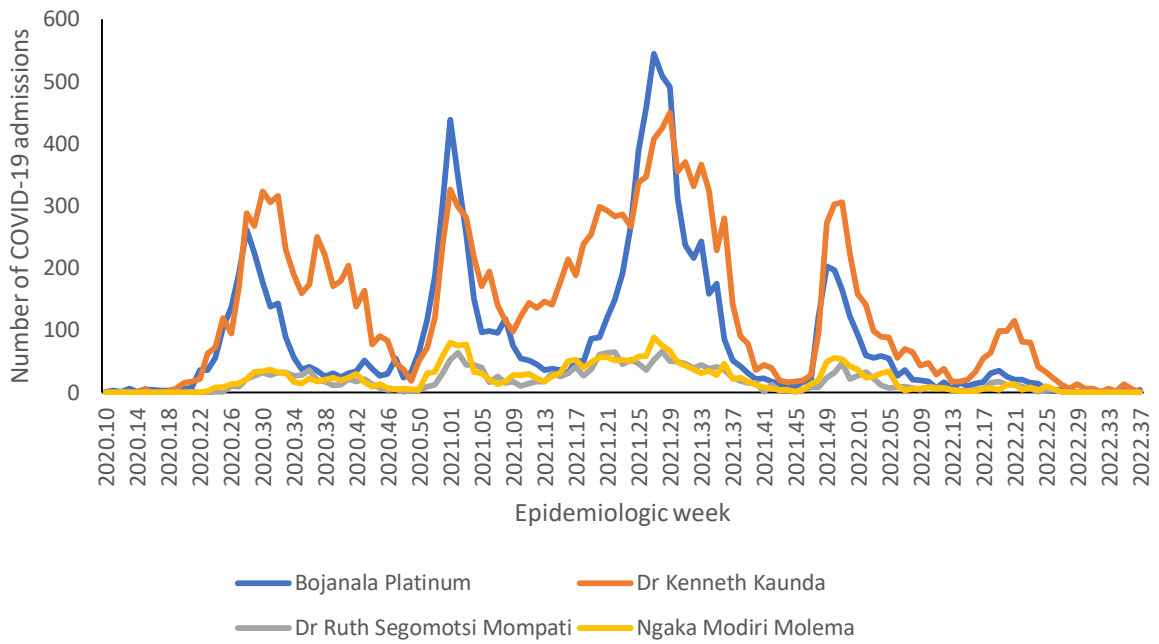


Figure 26: Number of reported COVID-19 admissions, by district and epidemiologic week, North West, 5 March 2020-17 September 2022, N=34,436

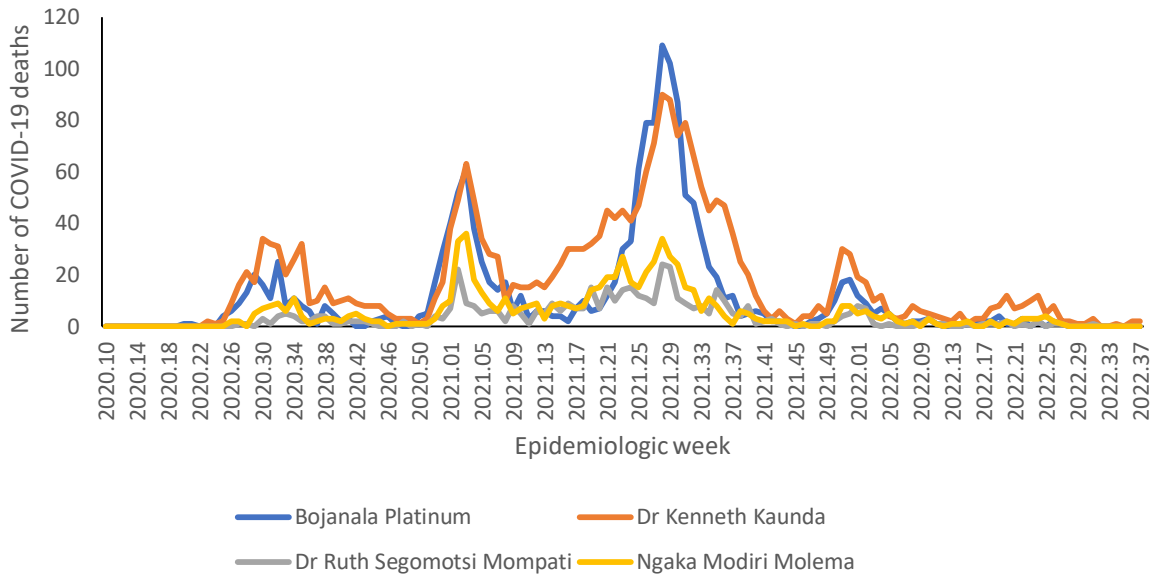


Figure 27: Number of reported COVID-19 in-hospital deaths, by district and epidemiologic week, North West, 5 March 2020-17 September 2022, N=5,021

Table 11: Previous 14 days and current 14 days average COVID-19 admissions and deaths and percentage changes, North West, 20 August-17 September 2022.

District	Previous 14 days admissions average	Current 14 days admissions average	Percentage change in admissions	Previous 14 days deaths average	Current 14 days deaths average	Percentage change in deaths
Bojanala Platinum	0.57	0.29	-50.00	0.00	0.00	0.00
Dr Kenneth Kaunda	1.07	0.43	-60.00	0.07	0.29	300.00
Dr Ruth Segomotsi Mompati	0.07	0.00	-100.00	0.00	0.00	0.00
Ngaka Modiri Molema	0.00	0.00	0.00	0.00	0.00	0.00

Northern Cape

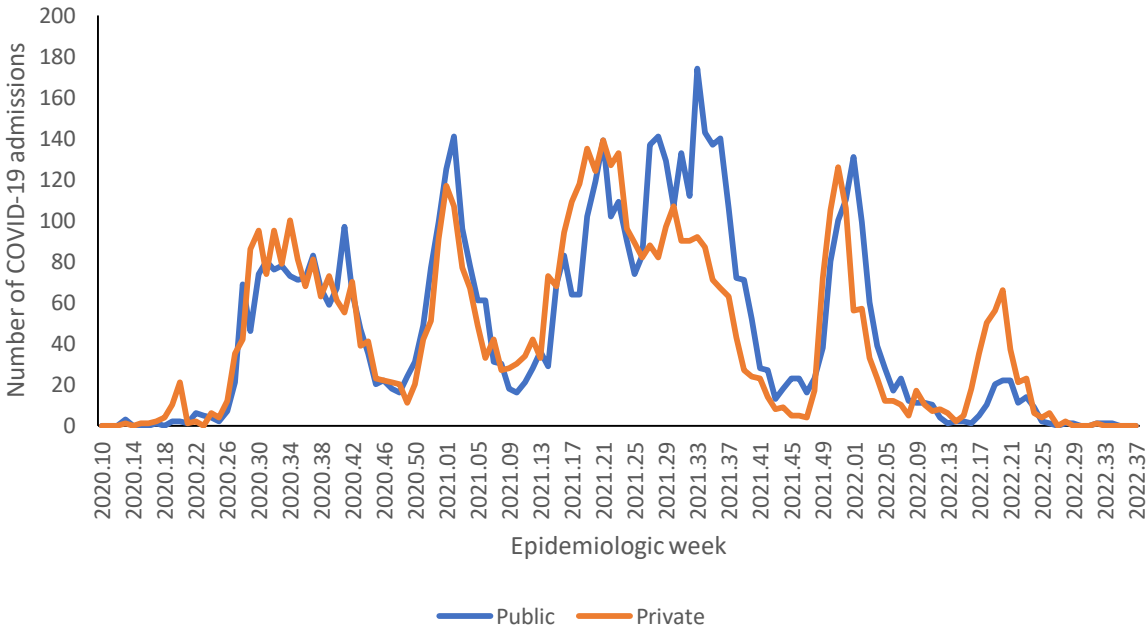


Figure 28: Number of reported COVID-19 admissions by health sector and epidemiologic week of diagnosis, Northern Cape, 5 March 2020-17 September 2022, N=11,940

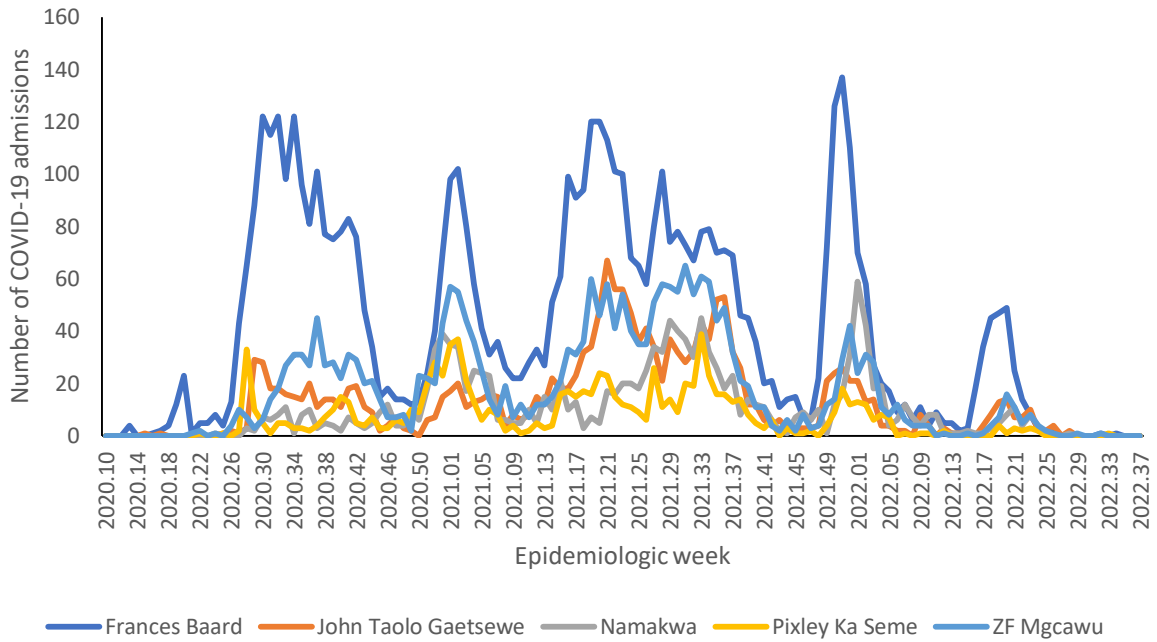


Figure 29: Number of reported COVID-19 admissions by district and epidemiologic week, Northern Cape, 5 March 2020-17 September 2022, N=11,940

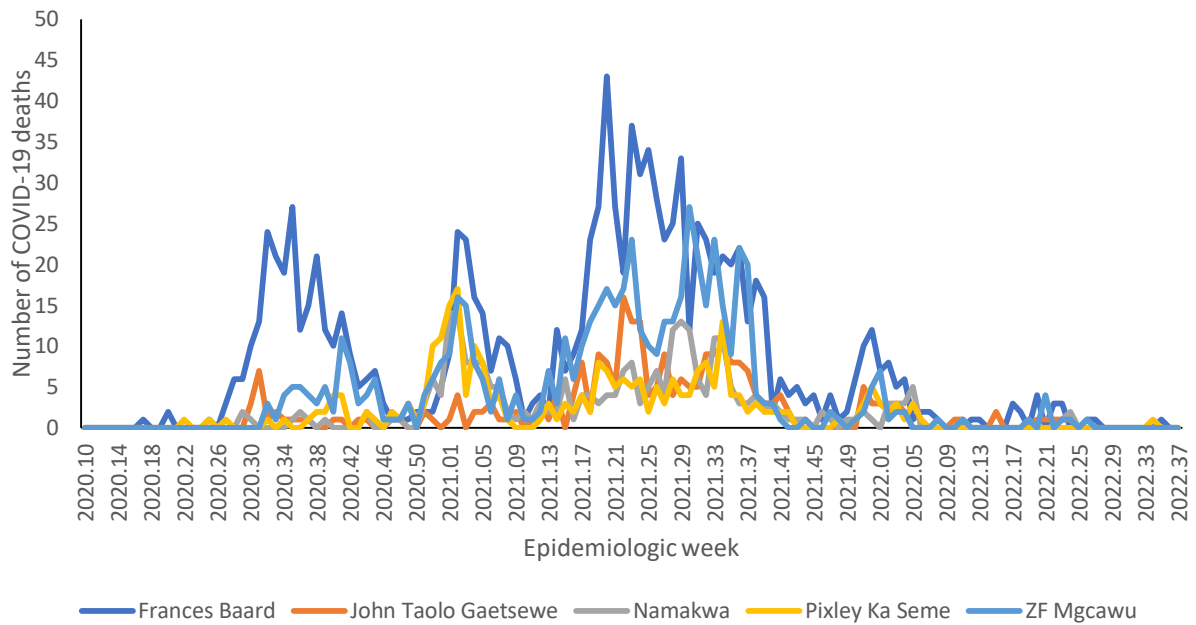


Figure 30: Number of reported COVID-19 in-hospital deaths, by district and epidemiologic week, Northern Cape, 5 March 2020-17 September 2022, N=2,462

Table 12: Previous 14 days and current 14 days average COVID-19 admissions and deaths and percentage changes, Northern Cape, 20 August-17 September 2022.

District	Previous 14 days admissions average	Current 14 days admissions average	Percentage change in admissions	Previous 14 days deaths average	Current 14 days deaths average	Percentage change in deaths
Frances Baard	0.07	0.00	-100.00	0.07	0.00	-100.00
John Taolo Gaetsewe	0.00	0.00	0.00	0.00	0.00	0.00
Namakwa	0.00	0.00	0.00	0.00	0.00	0.00
Pixley Ka Seme	0.00	0.00	0.00	0.07	0.00	-100.00
ZF Mgcawu	0.00	0.00	0.00	0.00	0.00	0.00

Western Cape

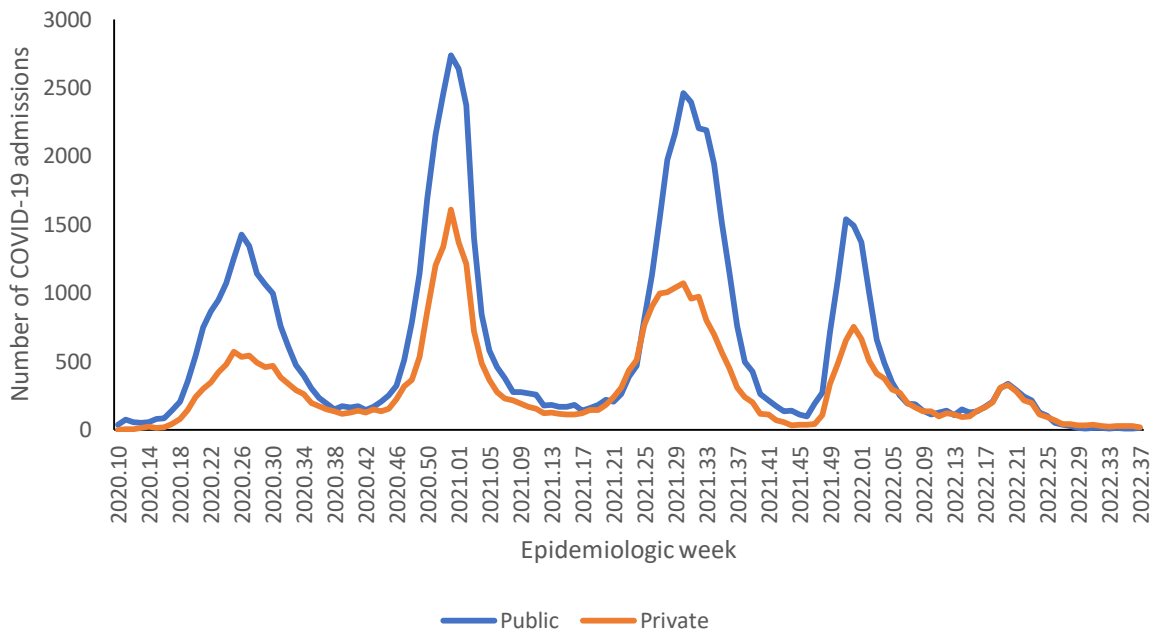


Figure 31: Number of reported COVID-19 admissions by health sector and epidemiologic week of diagnosis, Western Cape, 5 March 2020-17 September 2022, N=121,155

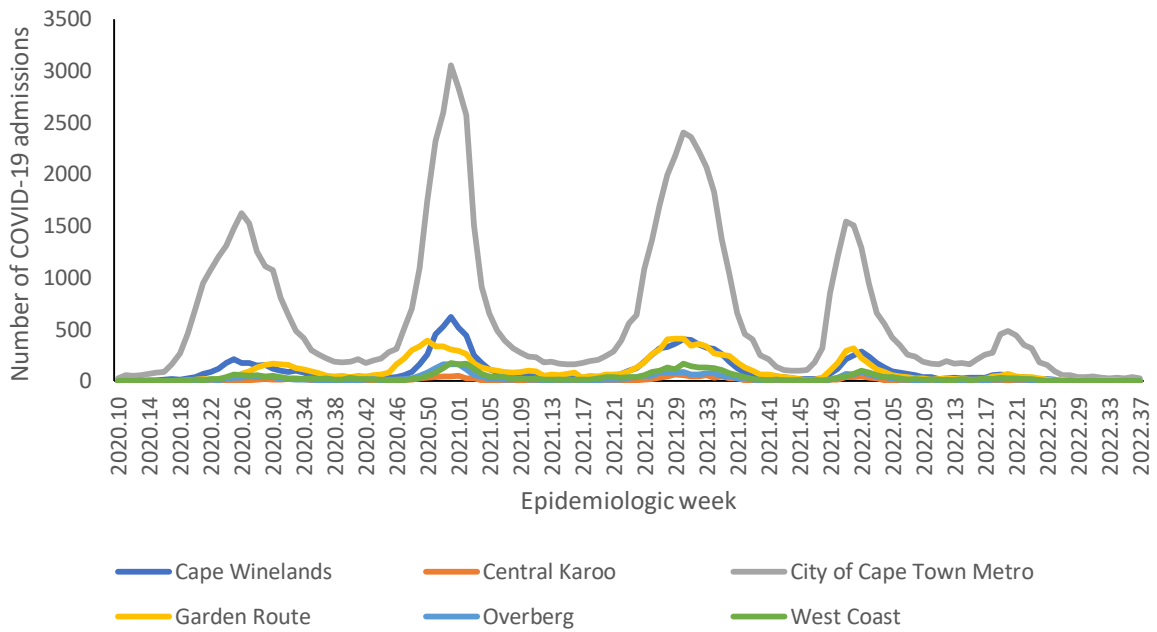


Figure 32: Number of reported COVID-19 admissions, by district and epidemiologic week, Western Cape, 5 March 2020-17 September 2022, N=121,155

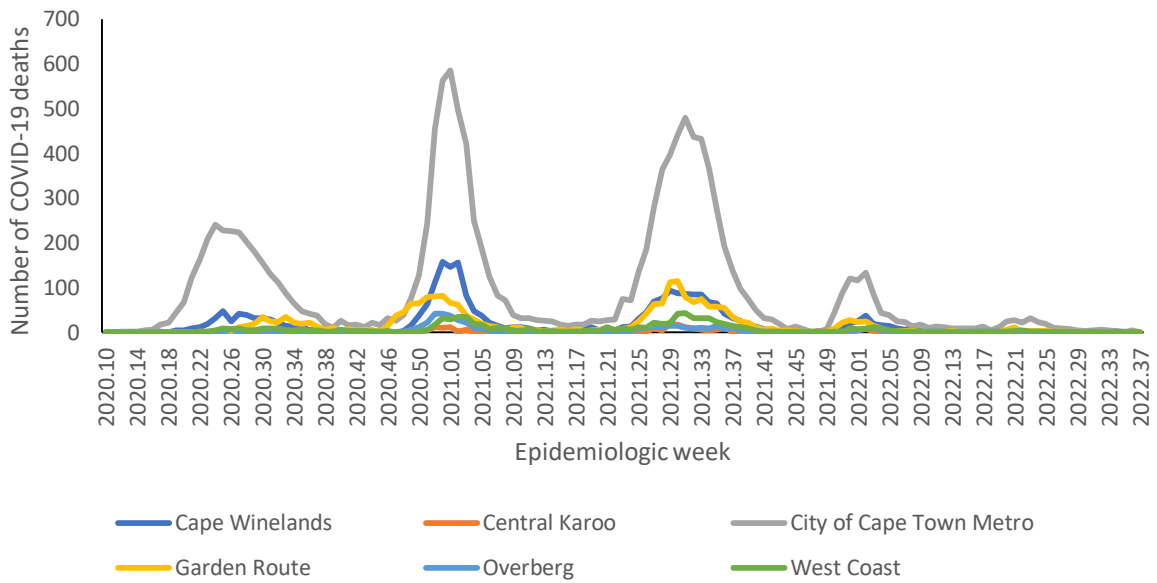


Figure 33: Number of reported COVID-19 in-hospital deaths, by district and epidemiologic week, Western Cape, 5 March 2020-17 September 2022, N=18,904

Table 13: Previous 14 days and current 14 days average COVID-19 admissions and deaths and percentage changes, Western Cape, 20 August-17 September 2022.

District	Previous 14 days admissions average	Current 14 days admissions average	Percentage change in admissions	Previous 14 days deaths average	Current 14 days deaths average	Percentage change in deaths
Cape Winelands	0.14	0.21	50.00	0.21	0.00	-100.00
Central Karoo	0.00	0.00	0.00	0.07	0.00	-100.00
City of Cape Town Metro	4.29	4.43	3.33	0.21	0.36	66.67
Garden Route	0.79	0.29	-63.64	0.00	0.07	0.00
Overberg	0.43	0.07	-83.33	0.00	0.00	0.00
West Coast	0.14	0.07	-50.00	0.07	0.00	-100.00

Limitation

DATCOV now includes reporting from all hospitals with COVID-19 admissions but many hospitals are yet to reach complete submission of historic data. Data quality in a surveillance system is dependent on the information submitted by healthcare institutions. It is not possible for the NICD to verify or check the quality of all these data, however, the NICD has built-in data quality checks. Delays in reporting of admissions and deaths may affect the numbers reported in the most recent week. The National Department of Health have recruited data capturers to support hospitals to improve data submission.

As hospitals reached capacity, admission criteria may change and therefore influence trends and inferences about the progression of the epidemic. DATCOV only reports hospital-based admissions and deaths and therefore does not include deaths occurring outside hospitals. DATCOV now has a module to record out-of-hospital deaths.

Severity data has some inherent limitations. We rely on a proxy indicator for severity and do not have clinical or laboratory parameters to ascertain clinical severity. In the early and late phases of the wave there is likely to be lower severity due to there being sufficient hospital capacity. It may take a few weeks for hospitalisation outcomes to accumulate. Early reporting on case fatality ratio is also biased particularly in older adults who may have longer admissions and are more likely to die.

Acknowledgements

All public and private sector hospitals submitting data to DATCOV

Private hospital groups submitting data to DATCOV:

- Netcare
- Life Healthcare
- Mediclinic Southern Africa
- National Hospital Network (NHN)
- Clinix Health Group
- Lenmed
- Joint Medical Holdings (JMH)

Appendix

Table 14: Percentage incidence change in hospital admissions over 14 days, by district, South Africa, 3 September 2022-17 September 2022.

Province	District	Total admissions	Incidence (per 100k)	New admissions	New admissions incidence (per 100k)	% average change (14 days)
Eastern Cape	Alfred Nzo	2766	335.47	0	0.00	-100.00
	Amathole	3324	424.76	0	0.00	-100.00
	Buffalo City Metro	10695	1351.25	1	0.13	-66.67
	Chris Hani	5338	749.13	1	0.14	-66.67
	Joe Gqabi	1221	356.06	1	0.29	100.00
	Nelson Mandela Bay Metro	17013	1410.23	4	0.33	0.00
	O R Tambo	5057	329.75	1	0.07	-50.00
	Sarah Baartman	3431	710.99	0	0.00	100.00
Free State	Fezile Dabi	3858	754.18	0	0.00	-100.00
	Lejweleputswa	6767	1036.01	1	0.15	0.00
	Mangaung Metro	15467	1764.87	10	1.14	25.00
	Thabo Mofutsanyana	5874	768.56	2	0.26	-33.33
	Xhariep	741	583.27	0	0.00	100.00
Gauteng	City of Johannesburg Metro	56874	945.82	24	0.40	0.00
	City of Tshwane Metro	44714	1170.41	28	0.73	0.00
	Ekurhuleni Metro	34523	853.18	19	0.47	-20.83
	Sedibeng	10253	1052.65	9	0.92	0.00
	West Rand	13947	1458.26	5	0.52	-28.57
KwaZulu-Natal	Amajuba	4749	837.56	5	0.88	400.00
	eThekweni Metro	41145	1026.17	10	0.25	-23.08
	Harry Gwala	2823	557.76	4	0.79	-20.00
	iLembe	3094	444.72	1	0.14	-50.00
	King Cetshwayo	9822	1029.42	2	0.21	-77.78
	Ugu	5978	743.11	2	0.25	-71.43
	uMgungundlovu	11979	1050.87	2	0.18	-33.33
	uMkhanyakude	1533	222.82	0	0.00	100.00
	Umzinyathi	2446	433.62	2	0.35	100.00
	UThukela	3348	478.03	0	0.00	-100.00
	Zululand	2555	288.97	0	0.00	-100.00
Limpopo	Capricorn	8758	660.02	1	0.08	-88.89
	Mopani	3845	319.71	1	0.08	100.00
	Sekhukhune	2159	177.46	0	0.00	100.00
	Vhembe	3092	216.17	1	0.07	0.00



	Waterberg	3368	448.98	0	0.00	-100.00
Mpumalanga	Ehlanzeni	8180	447.39	5	0.27	66.67
	Gert Sibande	7866	620.41	1	0.08	-88.89
	Nkangala	7025	426.45	0	0.00	100.00
North West	Bojanala Platinum	11456	588.04	4	0.21	100.00
	Dr Kenneth Kaunda	17750	2209.63	1	0.12	-80.00
	Dr Ruth Segomotsi Mompati	2395	513.37	0	0.00	100.00
	Ngaka Modiri Molema	2835	313.31	0	0.00	100.00
Northern Cape	Frances Baard	5605	1347.45	0	0.00	100.00
	John Taolo Gaetsewe	1703	616.23	0	0.00	100.00
	Namakwa	1366	1167.61	0	0.00	100.00
	Pixley Ka Seme	934	443.89	0	0.00	100.00
	ZF Mgcawu	2332	823.12	0	0.00	100.00
Western Cape	Cape Winelands	13637	1426.74	1	0.10	-66.67
	Central Karoo	1405	1853.76	0	0.00	100.00
	City of Cape Town Metro	84825	1812.93	39	0.83	-7.14
	Garden Route	13381	2129.90	3	0.48	200.00
	Overberg	3331	1090.24	0	0.00	-100.00
	West Coast	4585	976.58	2	0.43	100.00

Table 15: Number of reported COVID-19 admissions and in-hospital deaths by age and gender, South Africa, 5 March 2020-17 September 2022.

Age Group (Years)	ADMISSIONS				DEATHS			
	Female	Male	Unknown	Total	Female	Male	Unknown	Total
0-4	7454	9489	54	16997	180	212	4	396
5-9	2071	2752	8	4831	30	36	0	66
10-14	2741	2844	12	5597	68	71	1	140
15-19	7414	4170	6	11590	165	140	0	305
20-24	11393	5764	10	17167	365	280	1	646
25-29	17985	8152	12	26149	779	537	0	1316
30-34	23003	12815	15	35833	1313	1134	2	2449
35-39	23530	16738	21	40289	1876	1780	4	3660
40-44	20746	18448	16	39210	2293	2373	0	4666
45-49	22846	22334	12	45192	3237	3451	1	6689
50-54	26350	24715	10	51075	4406	4585	2	8993
55-59	29235	26715	16	55966	6218	6257	5	12480
60-64	26113	23883	18	50014	6698	6910	6	13614
65-69	22601	20166	18	42785	6945	6519	6	13470
70-74	19435	17148	19	36602	6190	6055	4	12249
75-79	14825	12258	9	27092	4941	4637	3	9581
80-84	11380	8112	8	19500	4057	3189	3	7249
85-89	6273	3934	2	10209	2298	1683	0	3981
90-94	2765	1404	1	4170	1125	663	0	1788
>=95	842	391	3	1236	372	165	0	537
Unknown	897	698	47	1642	48	43	0	91
Total	299899	242930	317	543146	53604	50720	42	104366



**NATIONAL INSTITUTE FOR
COMMUNICABLE DISEASES**

Division of the National Health Laboratory Service