

## COVID-19 Hospital Surveillance

### Update: Week 33, 2022

#### Overview of report

This report summarises data of COVID-19 cases admitted to hospital surveillance sites in all provinces. The report is based on data collected from 5 March 2020 to 20 August 2022.

#### Highlights

- There was a 40% decrease in the number of new admissions in week 33 2022 (111) compared to the number of admissions in week 32 2022 (185). Delays in reporting of admissions and deaths may affect the numbers reported in the most recent week.
- Gauteng had the highest number of admissions in the past week (47/111, 42.3%), followed by KwaZulu-Natal (21/111, 18.9%) and Western Cape (15/111, 13.5%). There was no admission in Northern Cape in the past week.
- The highest weekly incidence risk of COVID-19 admissions reported in week 33 of 2022 was in the ≥65-year age group (0.8 admissions per 100 000 persons), and the lowest weekly incidence risk were in <20 and 20-34-years age group (0.1 admissions per 100 000 persons).

## Methods

Data on hospitalisation was accessed from DATCOV, a hospital surveillance system for COVID-19 admissions, initiated on the 1 April 2020. A COVID-19 case was defined as a person with a positive reverse transcriptase polymerase chain reaction (RT-PCR) assay for SARS-CoV-2 or a person who had a positive SARS-CoV-2 antigen test who was admitted to hospital.

Data on SARS-CoV-2 cases diagnosed in public and private laboratories submitted to the NICD were reported from the line list on the NMCSS.

Case fatality ratio (CFR) was calculated for all closed cases, i.e. COVID-19 deaths divided by COVID-19 deaths plus COVID-19 discharges, excluding individuals who are still admitted in hospital. For the calculation of cumulative incidence risks, StatsSA mid-year population estimates for 2021 were utilised. For comparisons of change in admission, we used 14-day daily average admissions in the current 14-day period compared to the previous 14-day period.

Severity was defined as patients receiving oxygen or invasive ventilation, treated in high care or intensive care wards, developing acute respiratory distress syndrome, or died. While oxygen, ventilation and ward of stay variables are updated daily for all admissions in the private sector, there may be delays with the data being updated in the public sector. Also, as patients remain in hospital their condition may change and percentage of severity may change over time.

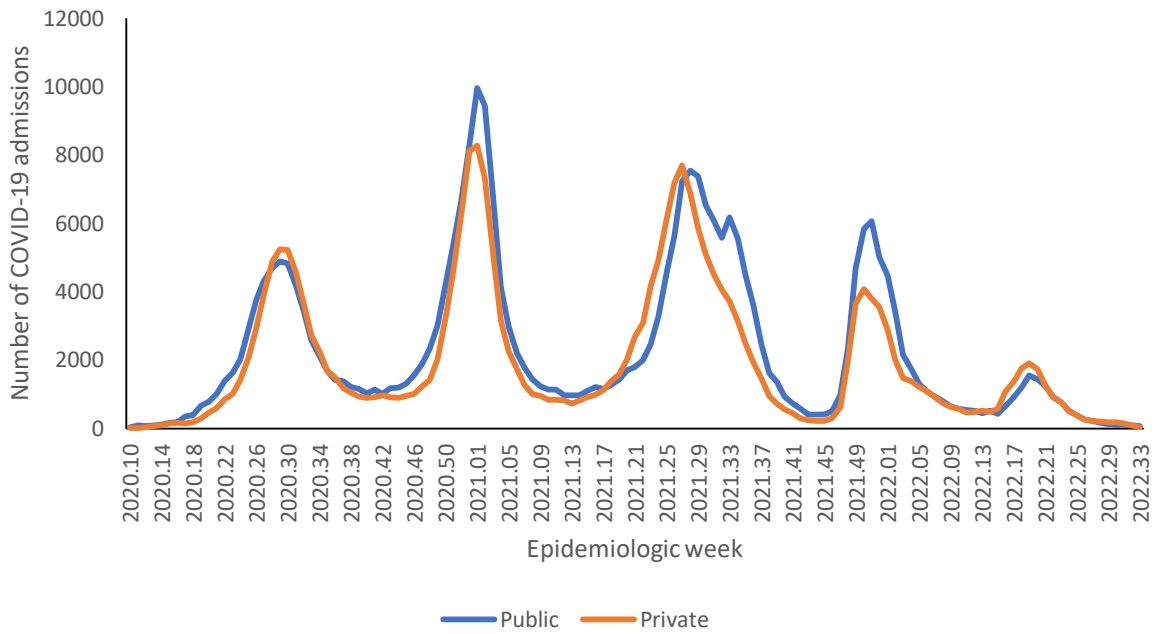
Data are submitted by public and private hospitals that have agreed to report COVID-19 admissions through DATCOV surveillance in all nine provinces of South Africa. On 15 July 2020, the National Health Council decided that all hospitals should report to DATCOV. As of 20 August 2022, a total of 669 facilities submitted data on hospitalised COVID-19 cases, 408 from public sector and 262 from private sector (Table 1). This reflects 100% coverage of all public and private hospitals that have had COVID-19 admissions. As new hospitals join the surveillance system, they have retrospectively captured all admissions recorded although there may be some backlogs in retrospective data capture.

**Table 1:** Number of hospitals reporting data on COVID-19 admissions by province and sector, South Africa, 5 March 2020-20 August 2022.

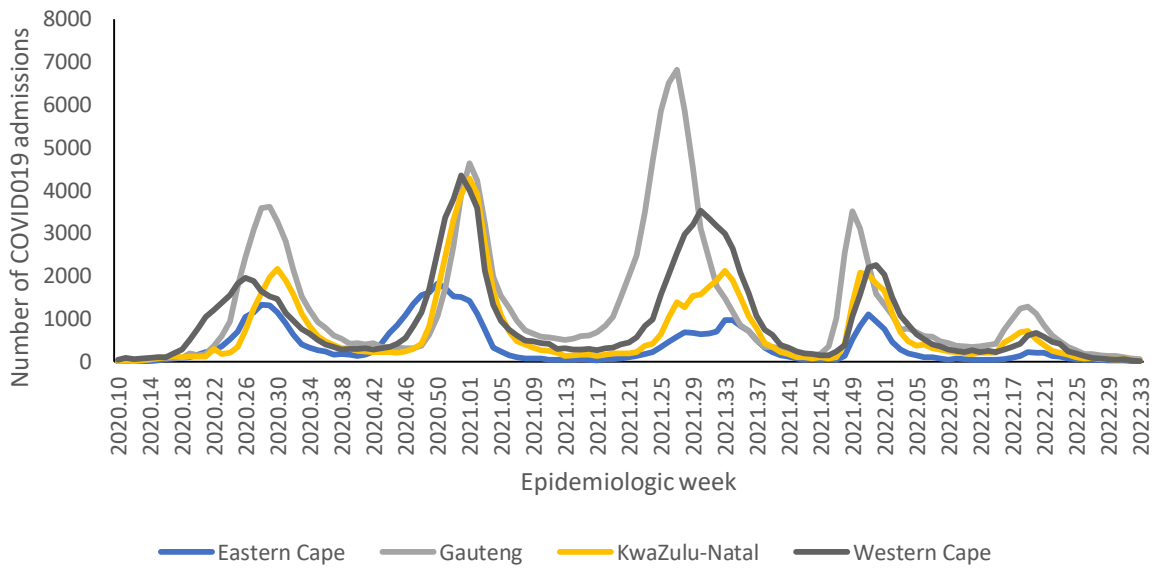
Facilities reporting	Public	Private
Eastern Cape	86	18
Free State	35	20
Gauteng	39	99
KwaZulu-Natal	71	47
Limpopo	41	7
Mpumalanga	31	9
North West	17	13
Northern Cape	29	6
Western Cape	59	43
South Africa	408	262

## Results

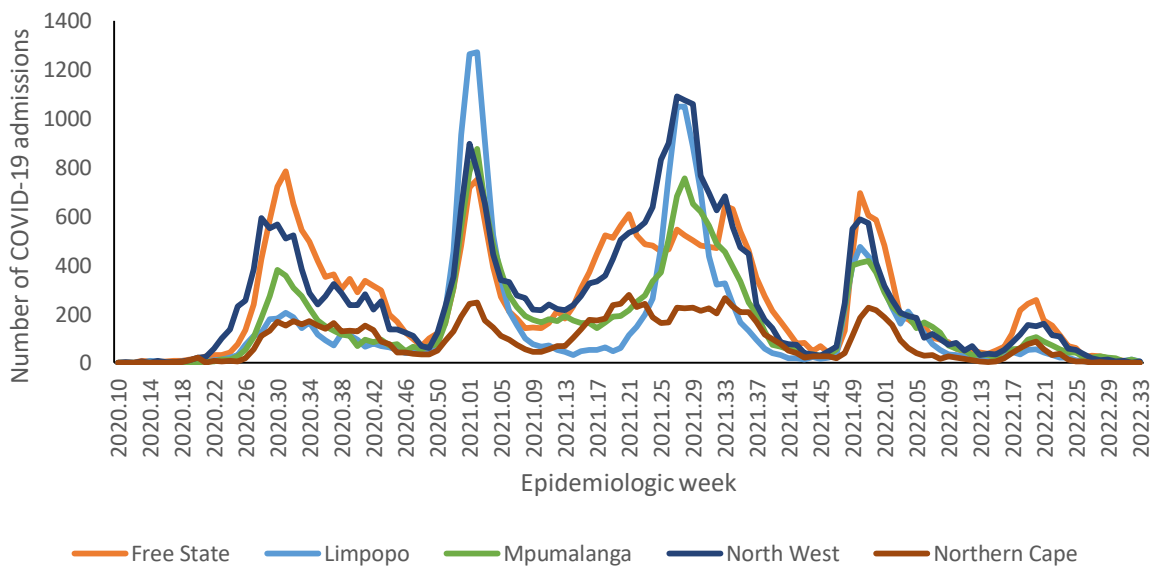
### Epidemiological and demographic trends in admissions



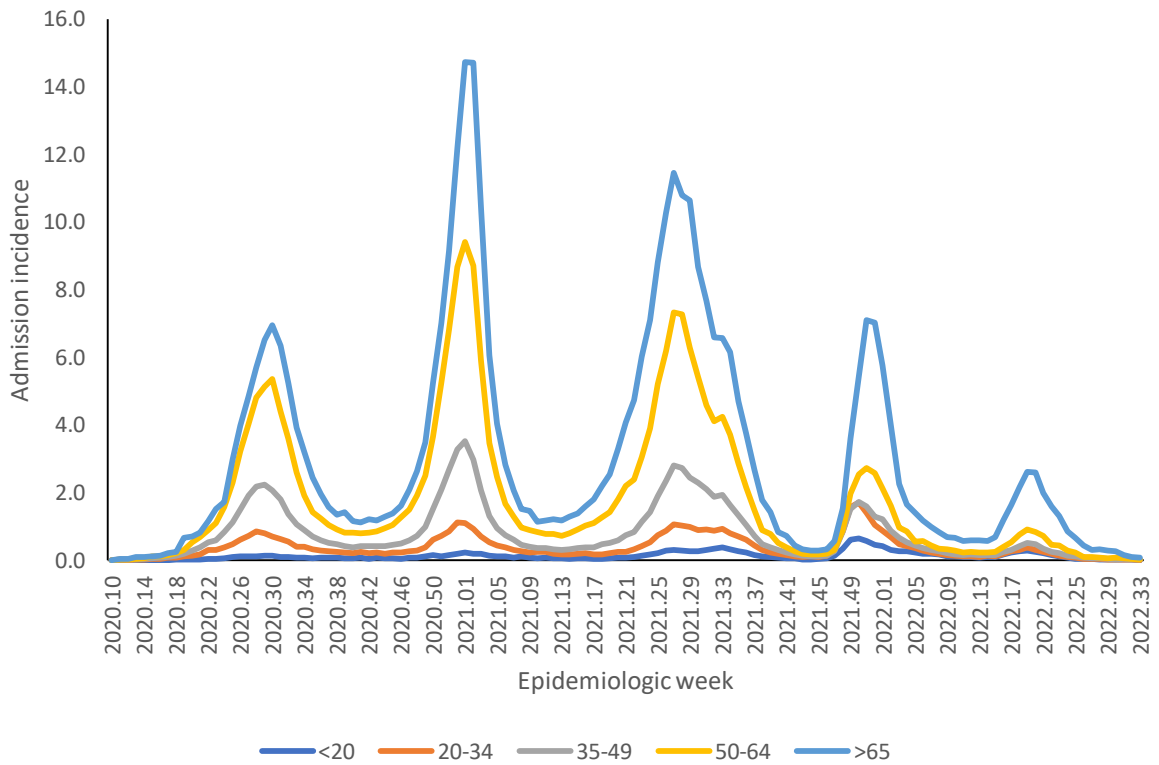
**Figure 1:** Number of reported COVID-19 admissions by health sector and epidemiologic week of diagnosis, South Africa, 5 March 2020-20 August 2022, N=541,827



**Figure 2a:** Number of reported COVID-19 admissions, by provinces with highest admissions and epidemiologic week of diagnosis, South Africa, 5 March 2020-20 August 2022, N=541,827

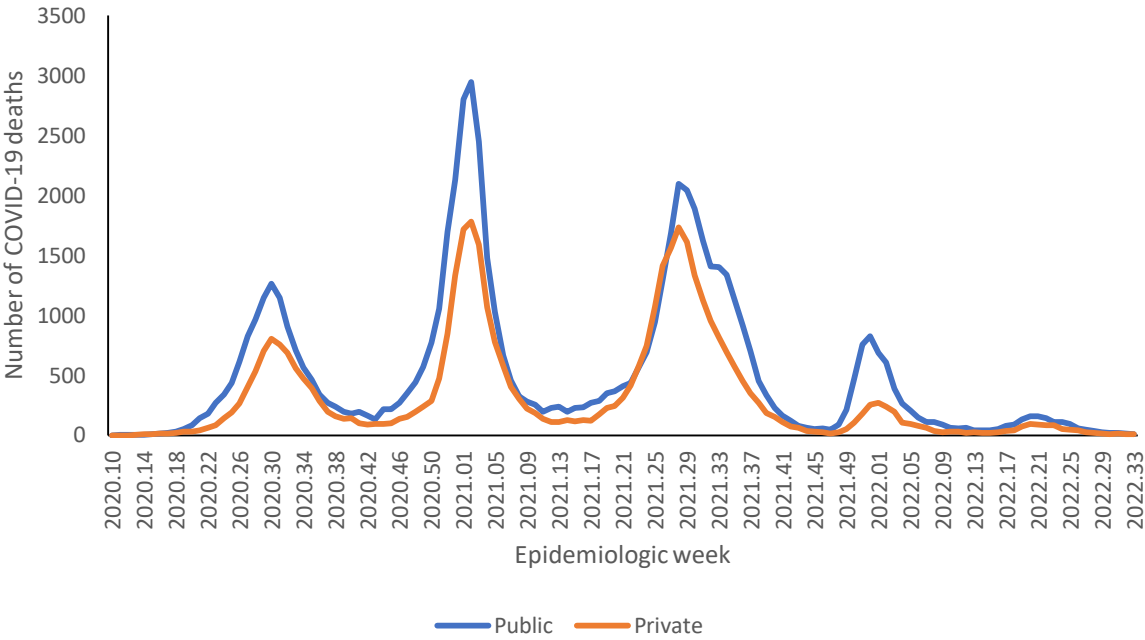


**Figure 2b:** Number of reported COVID-19 admissions, by provinces with lowest admissions and epidemiologic week of diagnosis, South Africa, 5 March 2020-20 August 2022, N=541,827

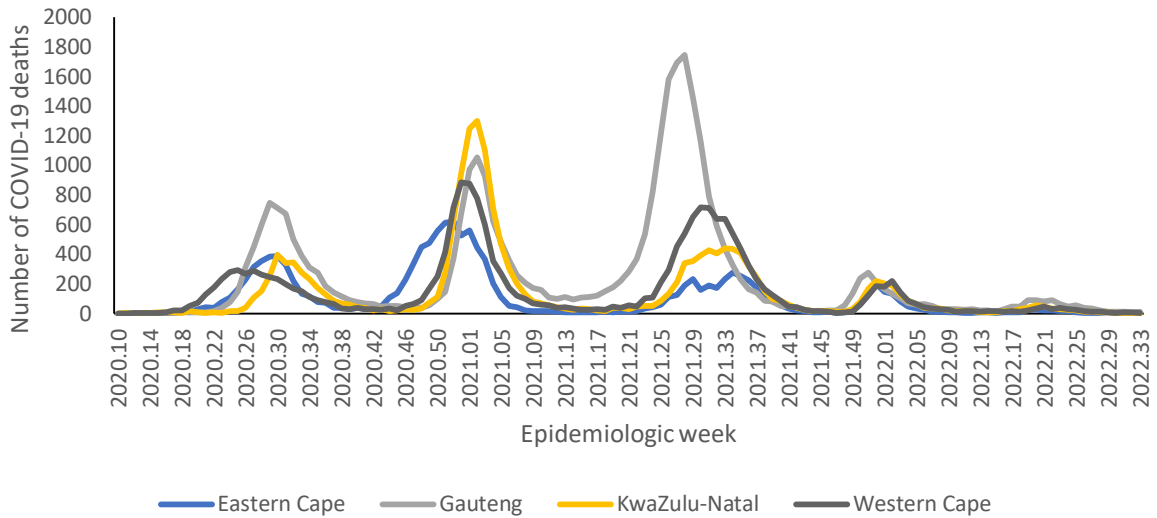


**Figure 3:** Incidence risk of COVID-19 admissions per 100,000 persons, by age group and epidemiologic week of diagnosis, South Africa, 5 March 2020-20 August 2022, N=541,827

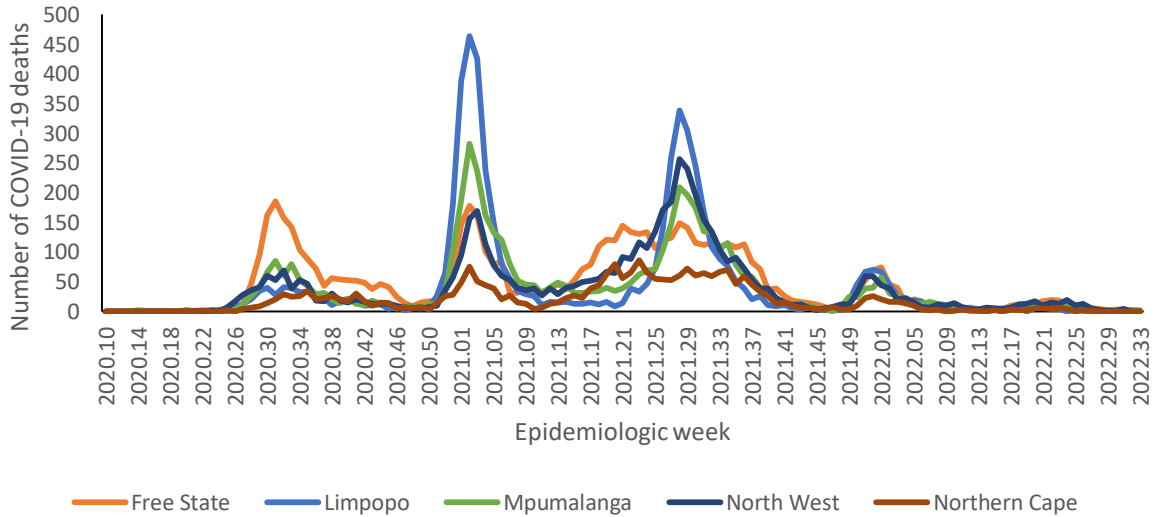
**Epidemiological and demographic trends in in-hospital mortality**



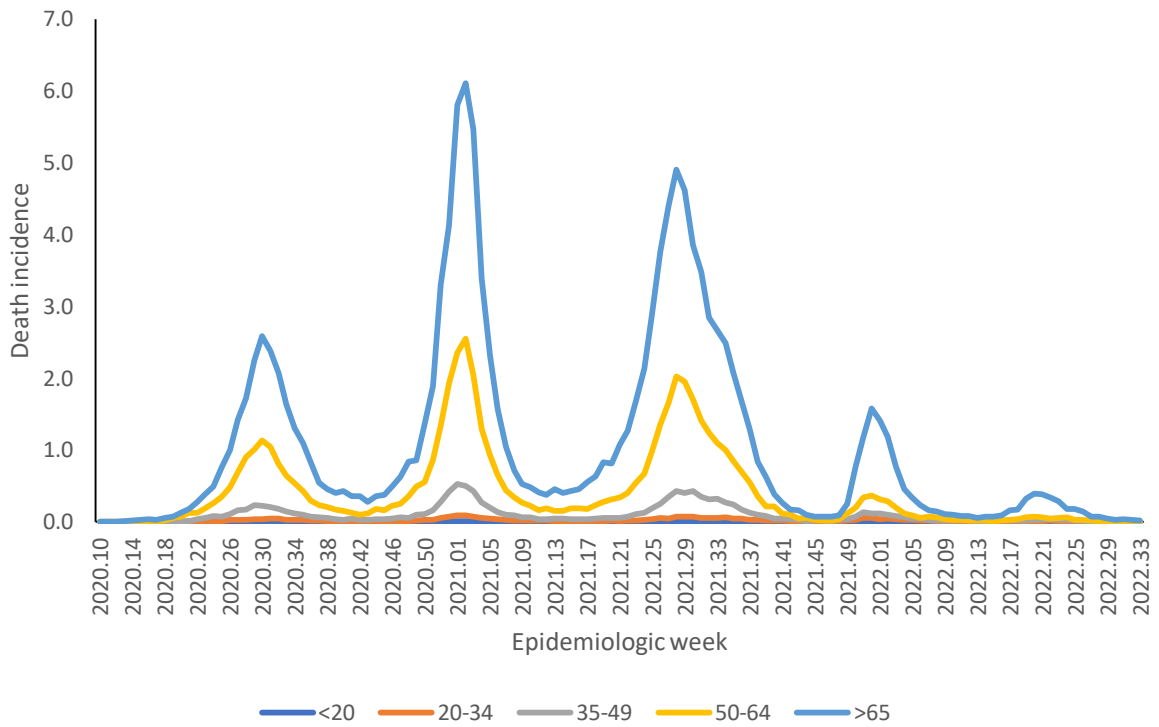
**Figure 4:** Number of reported COVID-19 in-hospital deaths, by health sector and epidemiologic week, South Africa, 5 March 2020-20 August 2022, N=104,262



**Figure 5a:** Number of reported COVID-19 in-hospital deaths, by province with highest deaths and epidemiologic week of death, South Africa, 5 March 2020-20 August 2022, N=104,262



**Figure 5b:** Number of reported COVID-19 in-hospital deaths, by province with lowest deaths and epidemiologic week of death, South Africa, 5 March 2020-20 August 2022, N=104,262



**Figure 6:** Incidence risk of COVID-19 in-hospital deaths per 100,000 persons, by age group and epidemiologic week of death, South Africa, 5 March 2020-20 August 2022, N=104,262



## Provincial trends

**Table 2:** Number and cumulative incidence risk of COVID-19 hospitalisations and in-hospital deaths per 100,000 persons by province, South Africa, 5 March 2020-20 August 2022.

Province	Provincial Population mid 2020*	Cumulative admissions	Cumulative incidence risk of admissions / 100,000	Cumulative deaths	Cumulative incidence risk of deaths / 100,000
Eastern Cape	6676590	48774	730.5	13303	199.2
Free State	2932441	32632	1112.8	6151	209.8
Gauteng	15810388	159 965	1011.8	30617	193.7
KwaZulu-Natal	11513575	89025	773.2	17558	152.5
Limpopo	5926724	21162	357.1	5345	90.2
Mpumalanga	4743584	22999	484.8	4925	103.8
North West	4122854	34 387	834.1	5015	121.6
Northern Cape	1303047	11 935	915.9	2460	188.8
Western Cape	7113776	120 948	1700.2	18888	265.5
<b>South Africa</b>	<b>60142978</b>	<b>541 827</b>	<b>900.9</b>	<b>104 262</b>	<b>173.4</b>

\*StatsSA mid-year population estimates 2020

**Table 3:** Previous 14 days and current 14 days daily average COVID-19 admissions and deaths and percentage changes, South Africa, 23 July-20 August 2022.

Province	Hospital admissions		Percentage change in admissions	Hospital deaths		Percentage change in deaths
	Previous 14 days average admissions	Current 14 days average admissions		Previous 14 days average deaths	Current 14 days average deaths	
Eastern Cape	3.21	1.79	-44.44	0.86	0.07	-91.67
Free State	1.64	0.79	-52.17	0.43	0.00	-100.00
Gauteng	16.00	8.07	-49.55	1.57	1.36	-13.64
KwaZulu-Natal	6.21	4.14	-33.33	0.57	0.14	-75.00
Limpopo	1.07	1.29	20.00	0.00	0.14	0.00
Mpumalanga	1.71	1.36	-20.83	0.14	0.29	100.00
North West	1.07	0.50	-53.33	0.36	0.00	-100.00
Northern Cape	0.00	0.07	0.00	0.00	0.00	0.00
Western Cape	6.36	3.14	-50.56	0.64	0.71	11.11

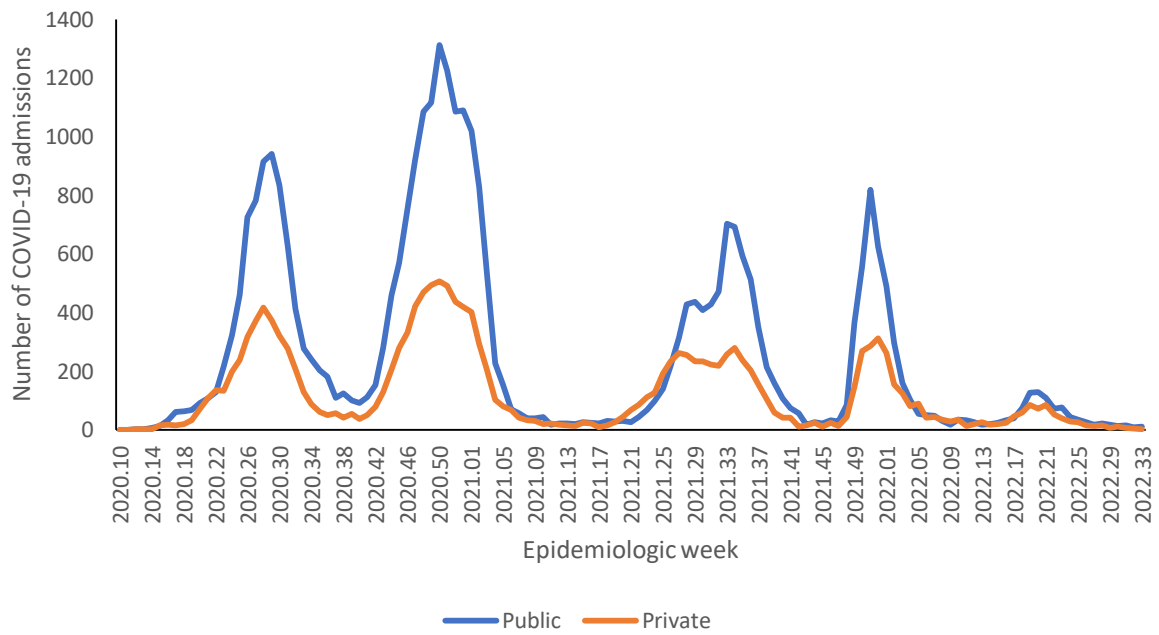
\* Reporting of new admissions in the most recent week may be delayed

**Table 4:** Previous 7 days and current 7 days daily average COVID-19 admissions and deaths and percentage changes, South Africa, 6 August-20 August 2022.

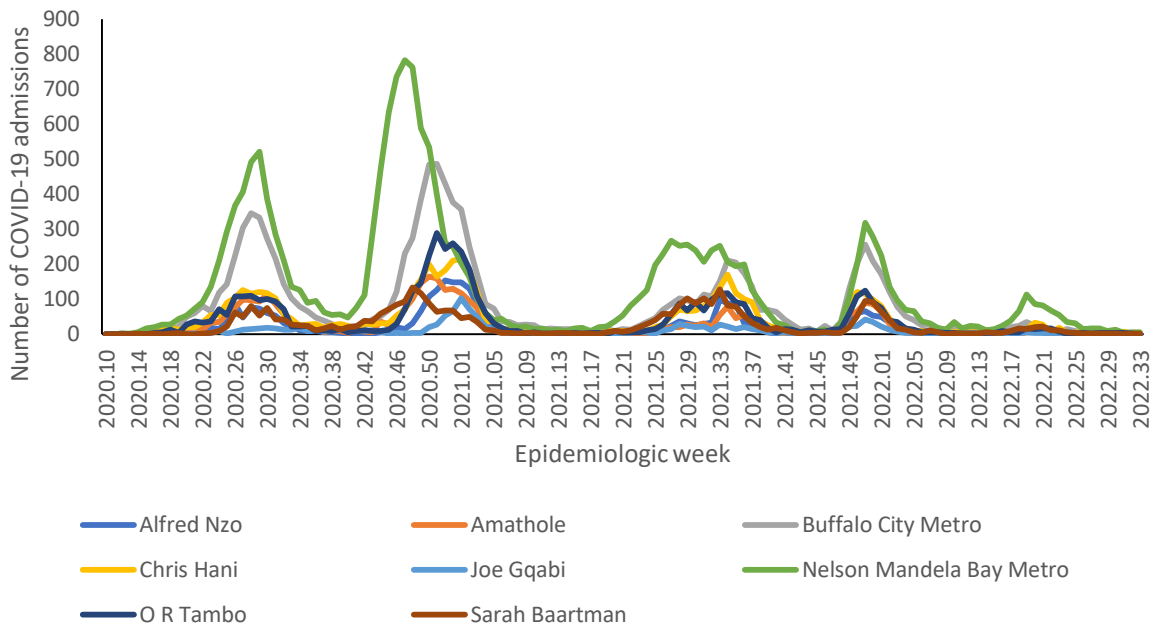
Province	Hospital admissions		Percentage change in admissions	Hospital deaths		Percentage change in deaths
	Previous 7 days average admissions	Current 7 days average admissions		Previous 7 days average deaths	Current 7 days average deaths	
Eastern Cape	1.86	1.71	-7.69	0.00	0.14	0.00
Free State	1.29	0.29	-77.78	0.00	0.00	0.00
Gauteng	9.43	6.71	-28.79	1.29	1.43	11.11
KwaZulu-Natal	5.29	3.00	-43.24	0.29	0.00	-100.00
Limpopo	1.86	0.71	-61.54	0.29	0.00	-100.00
Mpumalanga	2.14	0.57	-73.33	0.29	0.29	0.00
North West	0.29	0.71	150.00	0.00	0.00	0.00
Northern Cape	0.14	0.00	-100.00	0.00	0.00	0.00
Western Cape	4.14	2.14	-48.28	1.14	0.29	-75.00

\* Reporting of new admissions in the most recent week may be delayed

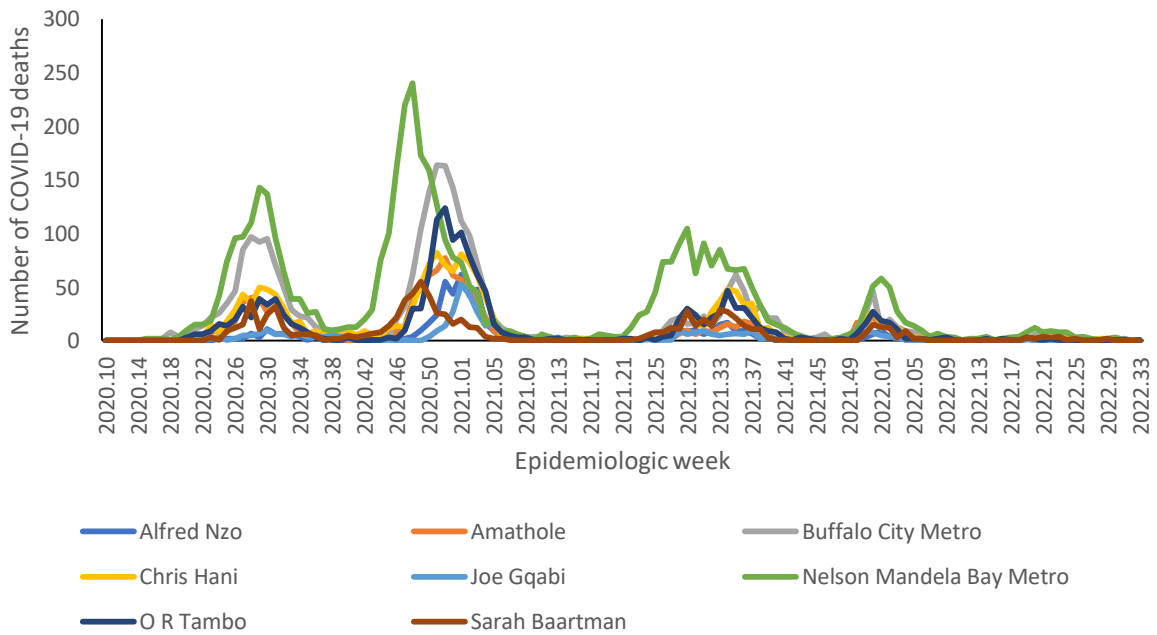
## Eastern Cape



**Figure 7:** Number of reported COVID-19 admissions by health sector and epidemiologic week of diagnosis, Eastern Cape, 5 March 2020-20 August 2022, N=48,774



**Figure 8:** Number of reported COVID-19 admissions, by district and epidemiologic week, Eastern Cape, 5 March 2020-20 August 2022, N=48,774

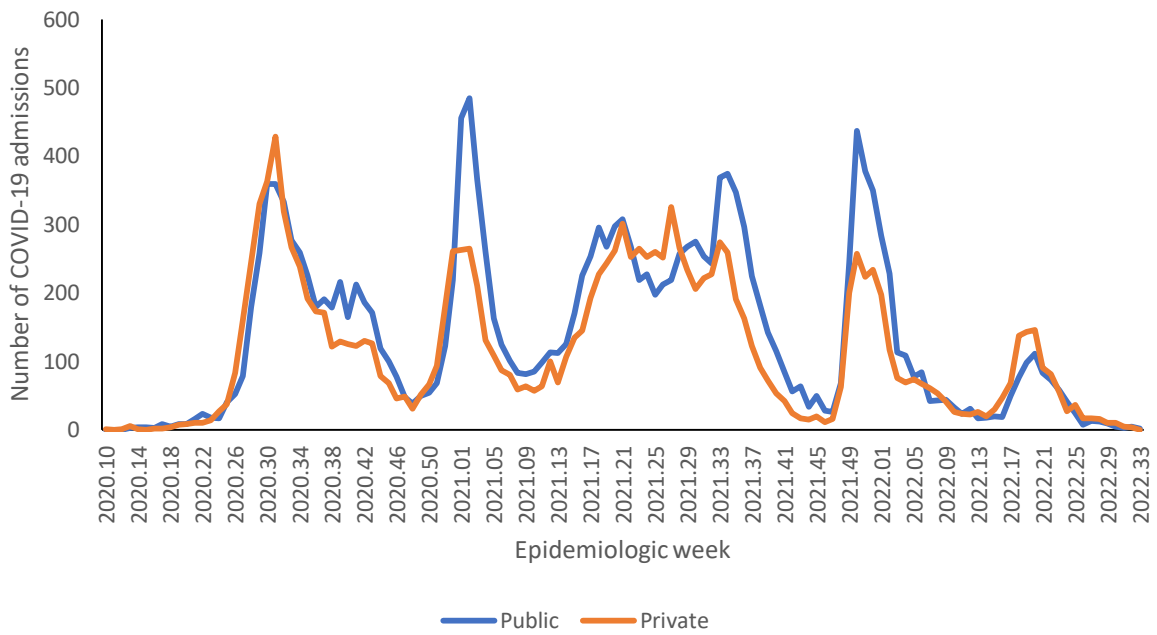


**Figure 9:** Number of reported COVID-19 in-hospital deaths, by district and epidemiologic week, Eastern Cape, 5 March 2020-20 August 2022, N=13,303

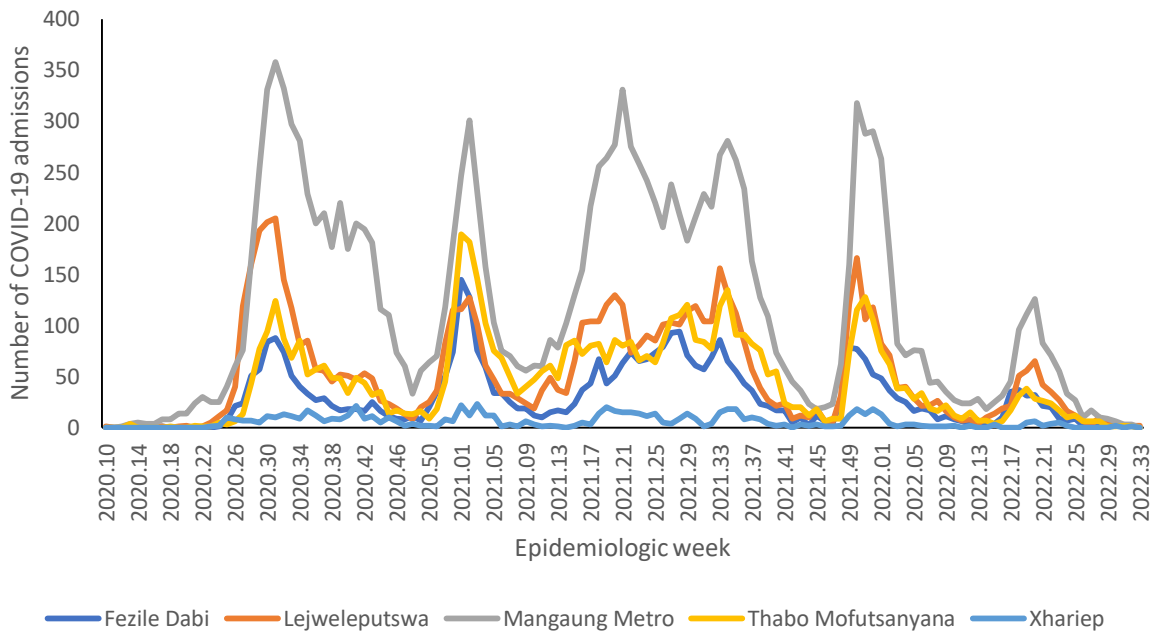
**Table 5:** Previous 14 days and current 14 days average COVID-19 admissions and deaths and percentage changes, Eastern Cape, 23 July-20 August 2022.

<b>District</b>	<b>Previous 14 days admissions average</b>	<b>Current 14 days admissions average</b>	<b>Percentage change in admissions</b>	<b>Previous 14 days deaths average</b>	<b>Current 14 days deaths average</b>	<b>Percentage change in deaths</b>
Alfred Nzo	0.36	0.14	-60.00	0.07	0.00	-100.00
Amathole	0.21	0.00	-100.00	0.07	0.00	-100.00
Buffalo City Metro	0.07	0.00	-100.00	0.00	0.00	0.00
Chris Hani	0.71	0.21	-70.00	0.14	0.00	-100.00
Joe Gqabi	0.21	0.36	66.67	0.14	0.00	-100.00
Nelson Mandela Bay	1.14	0.71	-37.50	0.29	0.00	-100.00
O R Tambo	0.43	0.07	-83.33	0.14	0.07	-50.00
Sarah Baartman	0.07	0.29	300.00	0.00	0.00	0.00

## Free State

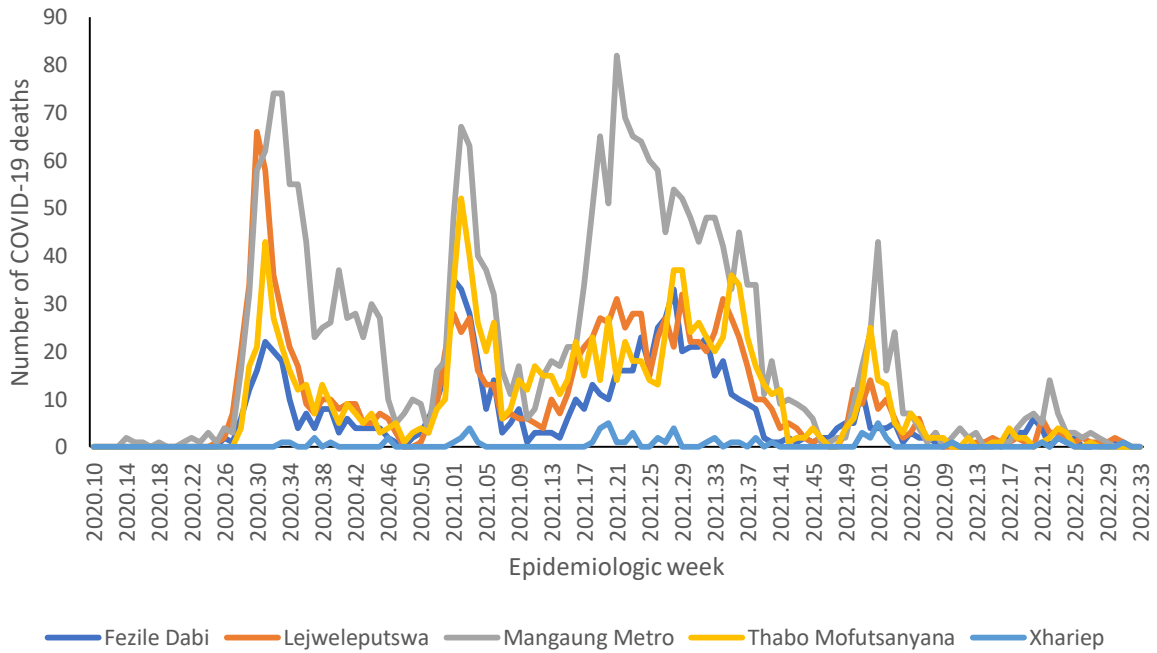


**Figure 10:** Number of reported COVID-19 admissions by health sector and epidemiologic week of diagnosis, Free State, 5 March 2020-20 August 2022, N=32,632



**Figure 11:** Number of reported COVID-19 admissions, by district and epidemiologic week, Free State, 5 March 2020-20 August 2022, N=32,632



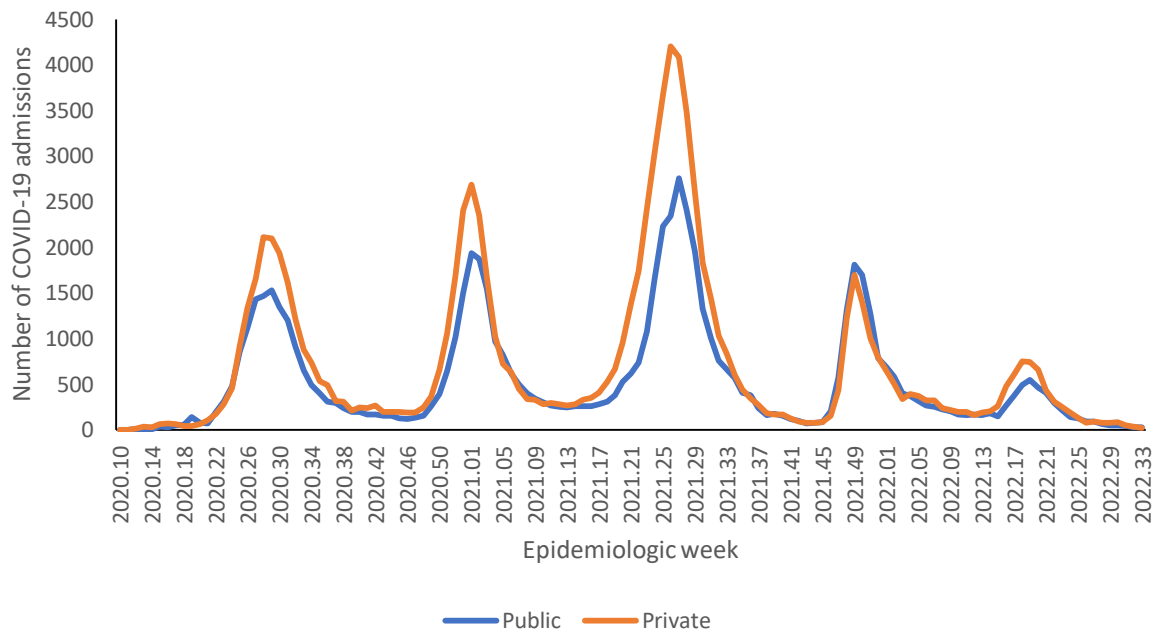


**Figure 12:** Number of reported COVID-19 in-hospital deaths, by district and epidemiologic week, Free State, 5 March 2020-20 August 2022, N=6,151

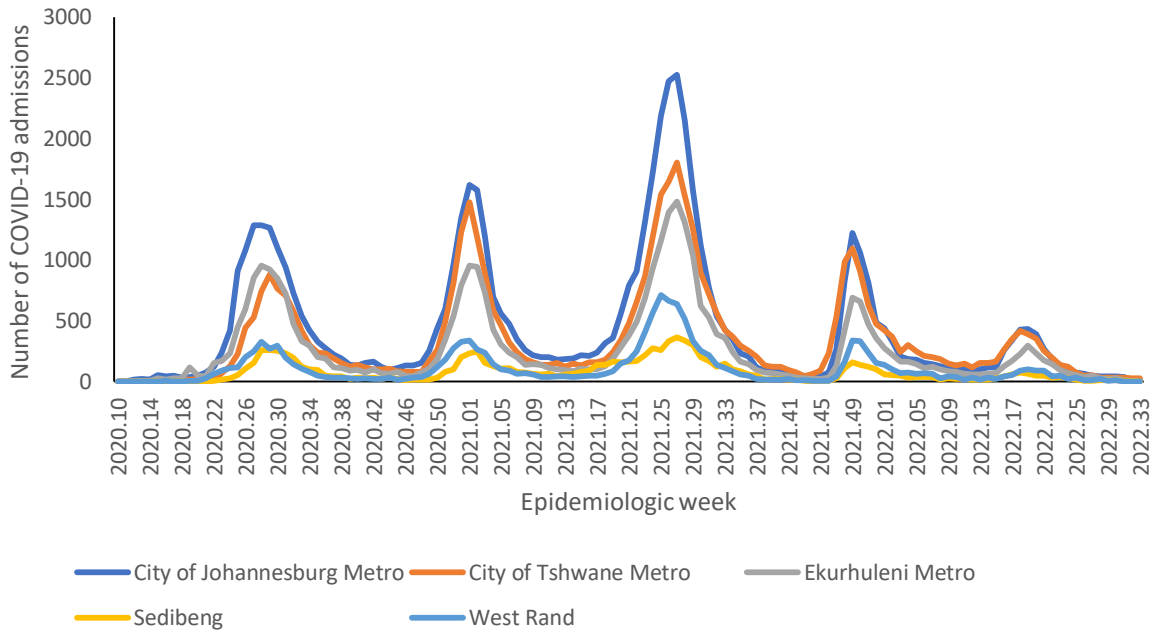
**Table 6:** Previous 14 days and current 14 days average COVID-19 admissions and deaths and percentage changes, Free State, 23 July-20 August 2022.

District	Previous 14 days admissions average	Current 14 days admissions average	Percentage change in admissions	Previous 14 days deaths average	Current 14 days deaths average	Percentage change in deaths
Fezile Dabi	0.29	0.14	-50.00	0.14	0.00	-100.00
Lejweleputswa	0.36	0.29	-20.00	0.21	0.00	-100.00
Mangaung Metro	0.64	0.21	-66.67	0.00	0.00	0.00
Thabo Mofutsanyana	0.21	0.07	-66.67	0.00	0.00	0.00
Xhariep	0.14	0.07	-50.00	0.07	0.00	-100.00

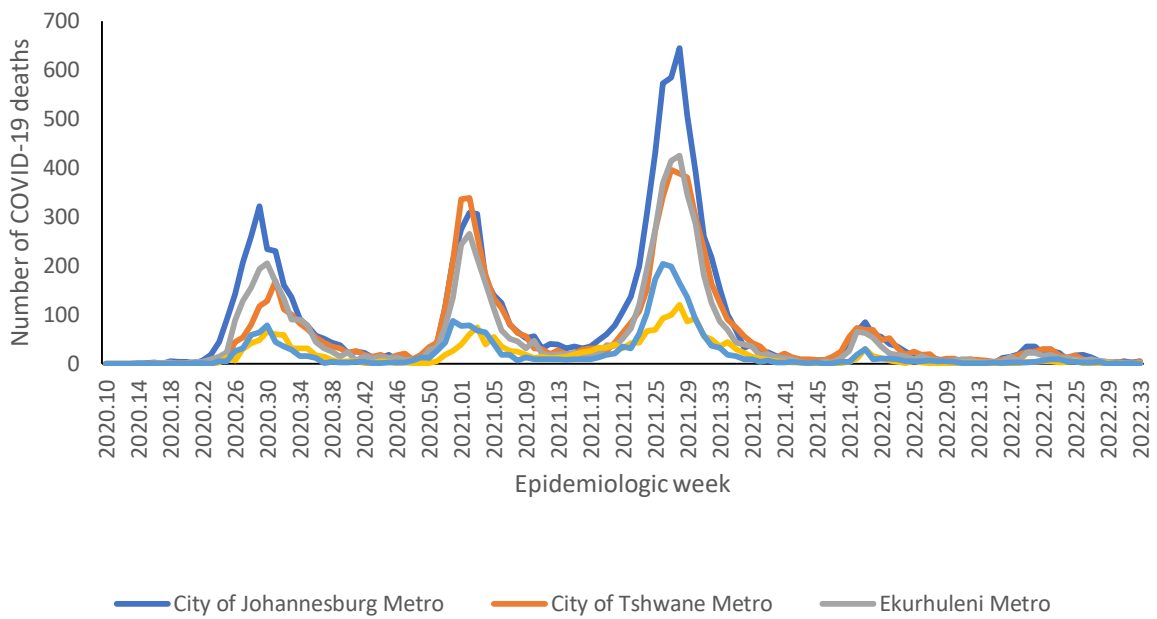
## Gauteng



**Figure 13:** Number of reported COVID-19 admissions by health sector and epidemiologic week of diagnosis, Gauteng, 5 March 2020-20 August 2022, N=159,965



**Figure 14:** Number of reported COVID-19 admissions, by district and epidemiologic week, Gauteng, 5 March 2020-20 August 2022, N=159,965



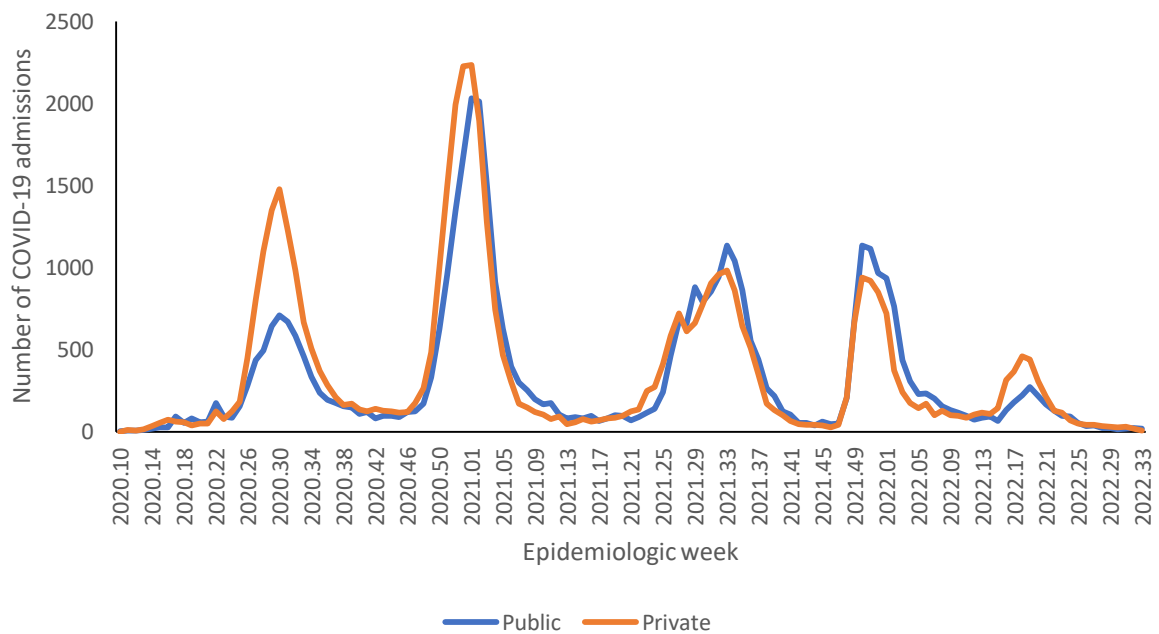
**Figure 15:** Number of reported COVID-19 in-hospital deaths, by district and epidemiologic week, Gauteng, 5 March 2020-20 August 2022, N=30,617



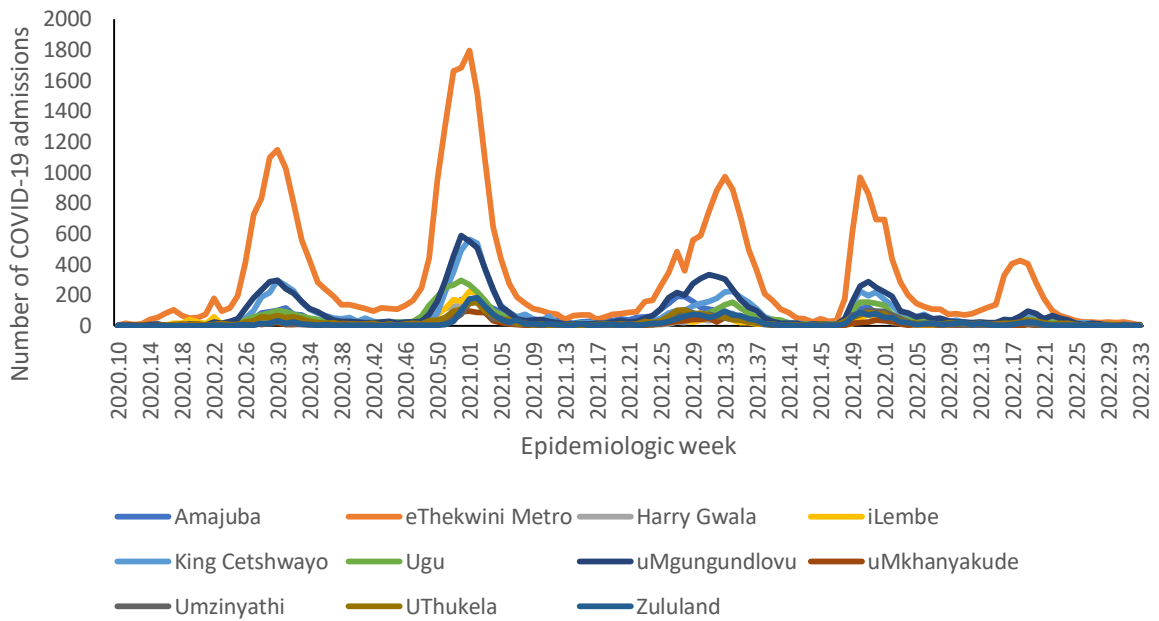
**Table 7:** Previous 14 days and current 14 days average COVID-19 admissions and deaths and percentage changes, Gauteng, 23 July-20 August 2022.

District	Previous 14 days admissions average	Current 14 days admissions average	Percentage change in admissions	Previous 14 days deaths average	Current 14 days deaths average	Percentage change in deaths
City of Johannesburg Metro	5.71	2.29	-60.00	0.57	0.57	0.00
City of Tshwane Metro	4.79	3.93	-17.91	0.43	0.50	16.67
Ekurhuleni Metro	3.21	0.93	-71.11	0.29	0.14	-50.00
Sedibeng	1.36	0.50	-63.16	0.14	0.07	-50.00
West Rand	0.93	0.43	-53.85	0.14	0.07	-50.00

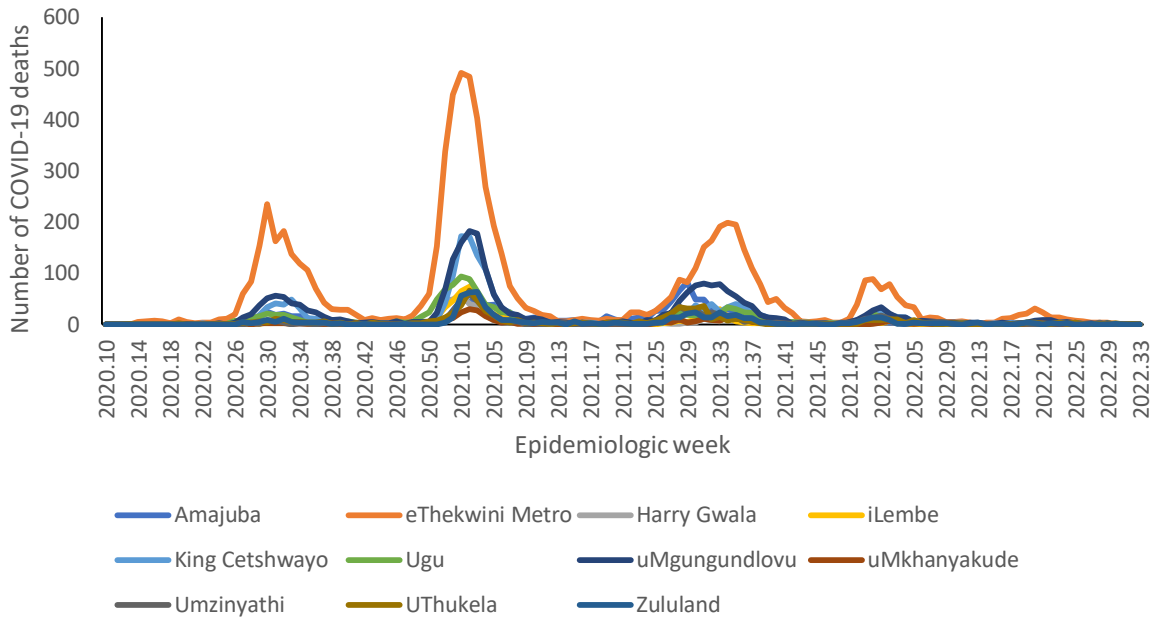
## KwaZulu-Natal



**Figure 16:** Number of reported COVID-19 admissions by health sector and epidemiologic week of diagnosis, KwaZulu-Natal, 5 March 2020-20 August 2022, N=89,025



**Figure 17:** Number of reported COVID-19 admissions, by district and epidemiologic week, KwaZulu-Natal, 5 March 2020-20 August 2022, N=89,025



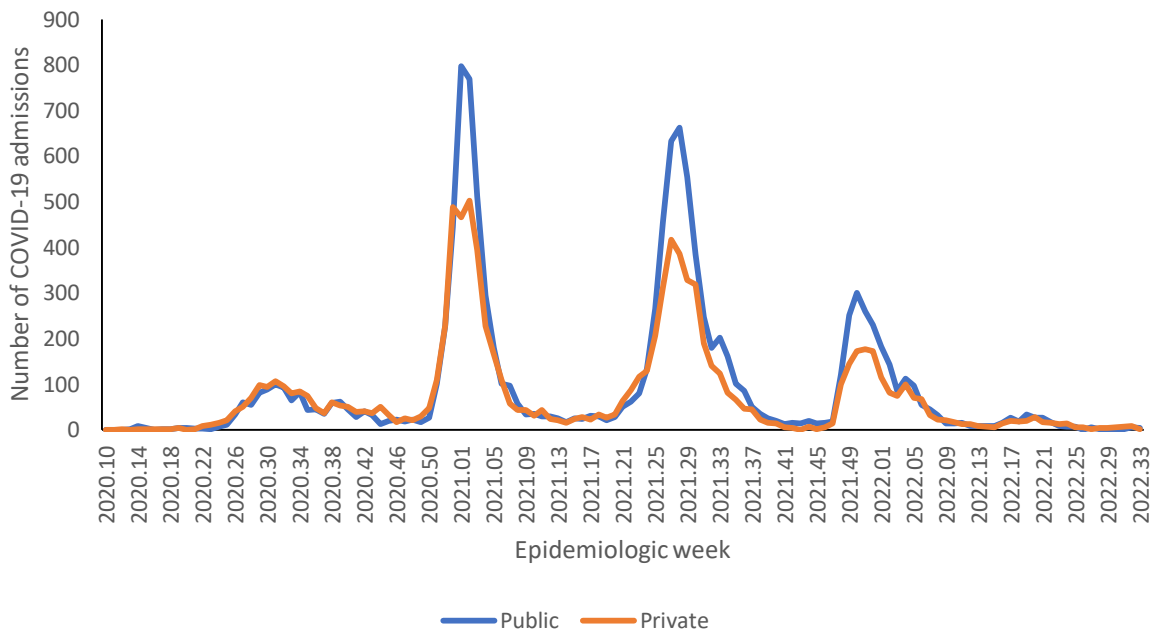
**Figure 18:** Number of reported COVID-19 in-hospital deaths, by district and epidemiologic week, KwaZulu-Natal, 5 March 2020-20 August 2022, N=17,558



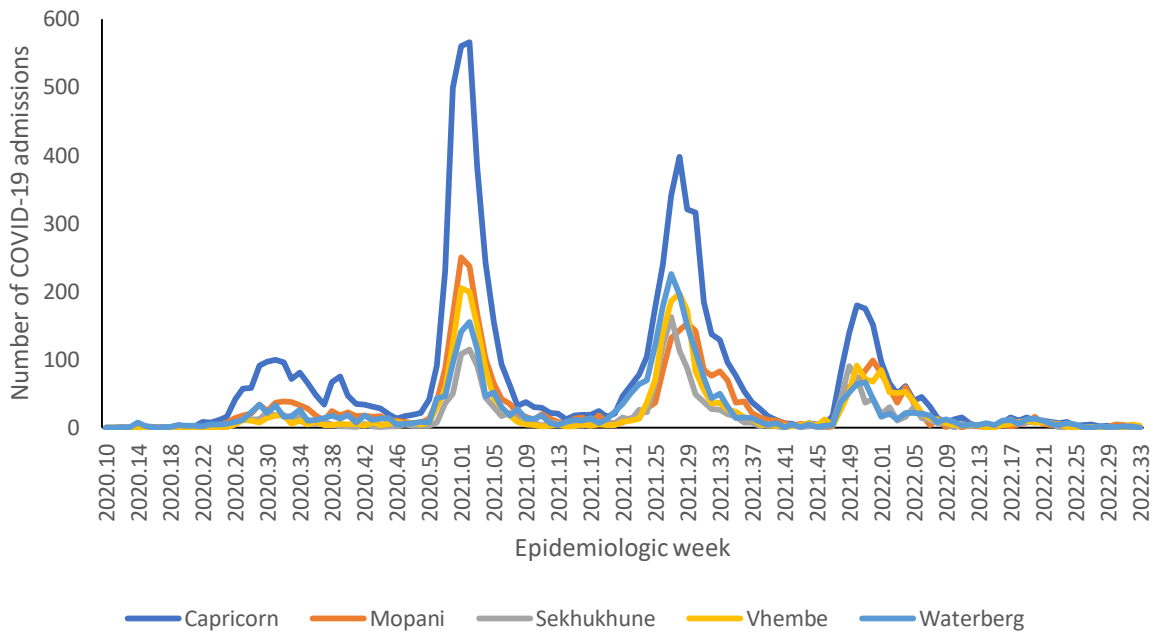
**Table 8:** Previous 14 days and current 14 days average COVID-19 admissions and deaths and percentage changes, KwaZulu-Natal, 23 July-20 August 2022.

District	Previous 14 days admissions average	Current 14 days admissions average	Percentage change in admissions	Previous 14 days deaths average	Current 14 days deaths average	Percentage change in deaths
Amajuba	0.14	0.29	100.00	0.00	0.00	0.00
eThekweni Metro	3.07	1.43	-53.49	0.14	0.07	-50.00
Harry Gwala	0.00	0.14	0.00	0.00	0.00	0.00
iLembe	0.00	0.14	0.00	0.00	0.00	0.00
King Cetshwayo	0.86	0.50	-41.67	0.00	0.00	0.00
Ugu	0.71	0.21	-70.00	0.07	0.00	-100.00
uMgungundlovu	1.00	0.71	-28.57	0.00	0.00	0.00
uMkhanyakude	0.07	0.36	400.00	0.00	0.00	0.00
Umzinyathi	0.07	0.29	300.00	0.14	0.00	-100.00
UThukela	0.21	0.07	-66.67	0.14	0.07	-50.00
Zululand	0.07	0.00	-100.00	0.07	0.00	-100.00

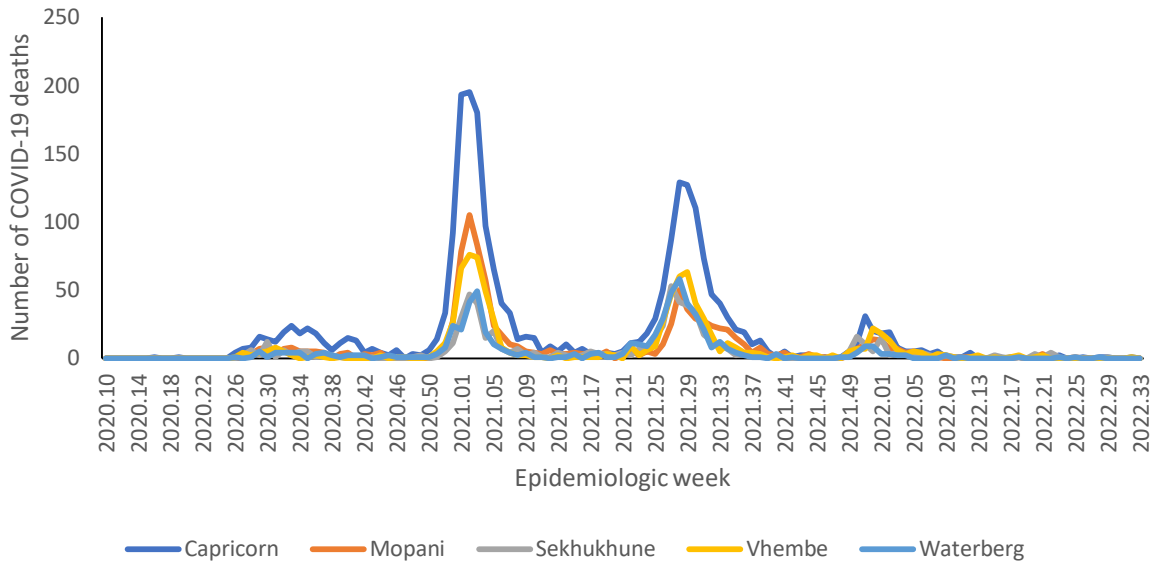
## Limpopo



**Figure 19:** Number of reported COVID-19 admissions by health sector and epidemiologic week of diagnosis, Limpopo, 5 March 2020-20 August 2022, N=21,162



**Figure 20:** Number of reported COVID-19 admissions, by district and epidemiologic week, Limpopo, 5 March 2020-20 August 2022, N=21,162

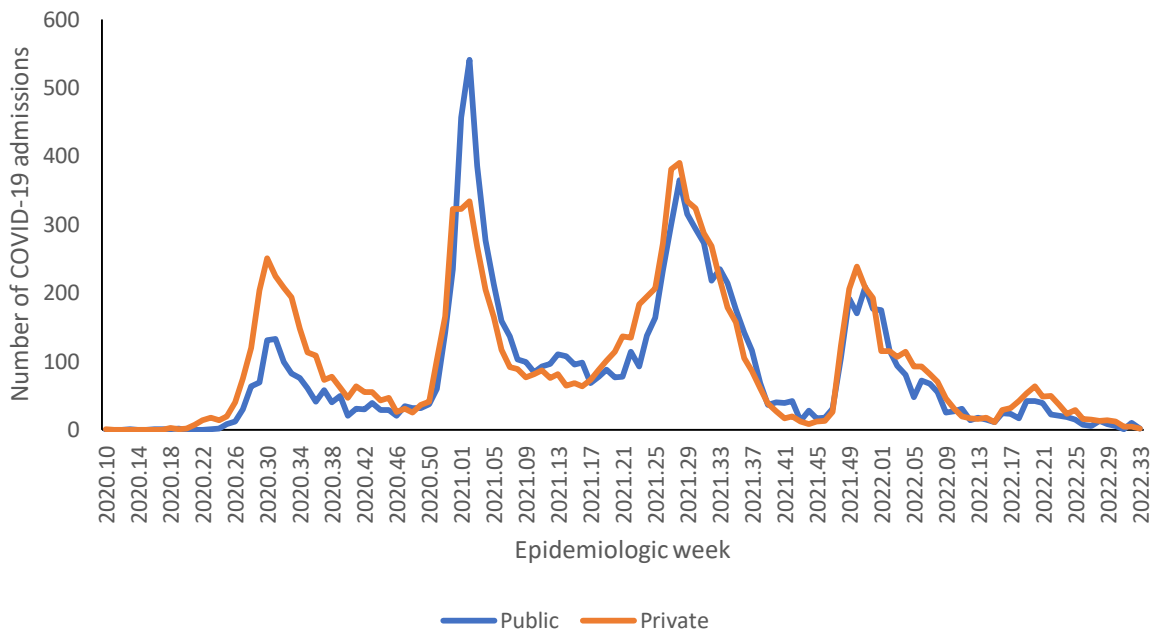


**Figure 21:** Number of reported COVID-19 in-hospital deaths, by district and epidemiologic week, Limpopo, 5 March 2020-20 August 2022, N=5,345

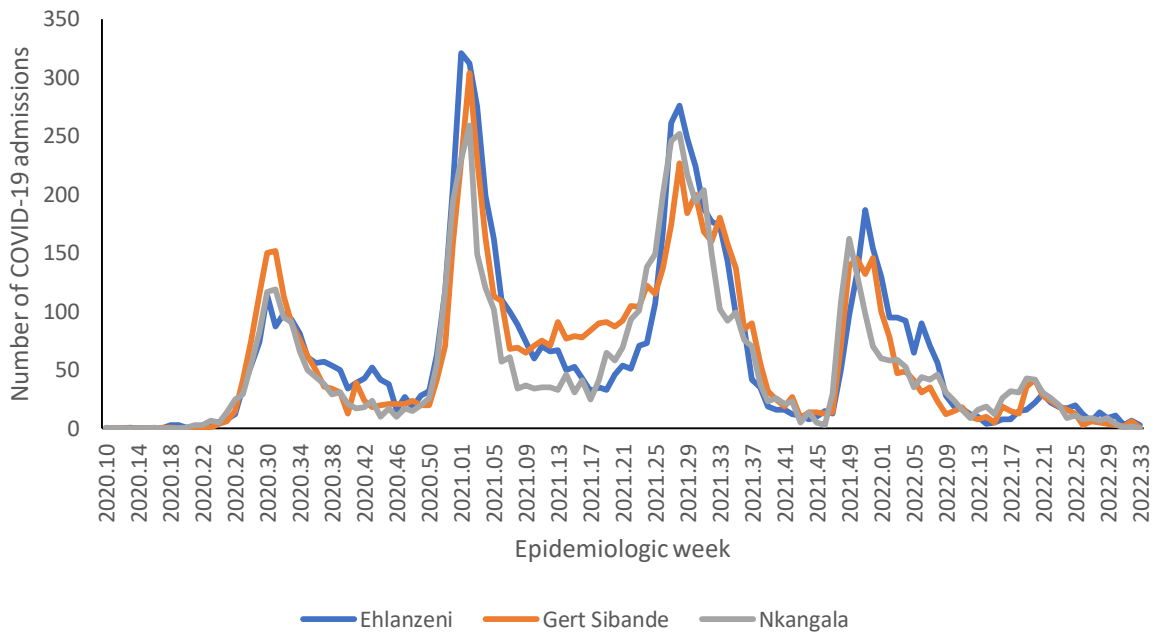
**Table 9:** Previous 14 days and current 14 days average COVID-19 admissions and deaths and percentage changes, Limpopo, 23 July-20 August 2022.

District	Previous 14 days admissions average	Current 14 days admissions average	Percentage change in admissions	Previous 14 days deaths average	Current 14 days deaths average	Percentage change in deaths
Capricorn	0.21	0.29	33.33	0.00	0.07	0.00
Mopani	0.64	0.21	-66.67	0.00	0.00	0.00
Sekhukhune	0.00	0.07	0.00	0.00	0.00	0.00
Vhembe	0.00	0.57	0.00	0.00	0.07	0.00
Waterberg	0.21	0.14	-33.33	0.00	0.00	0.00

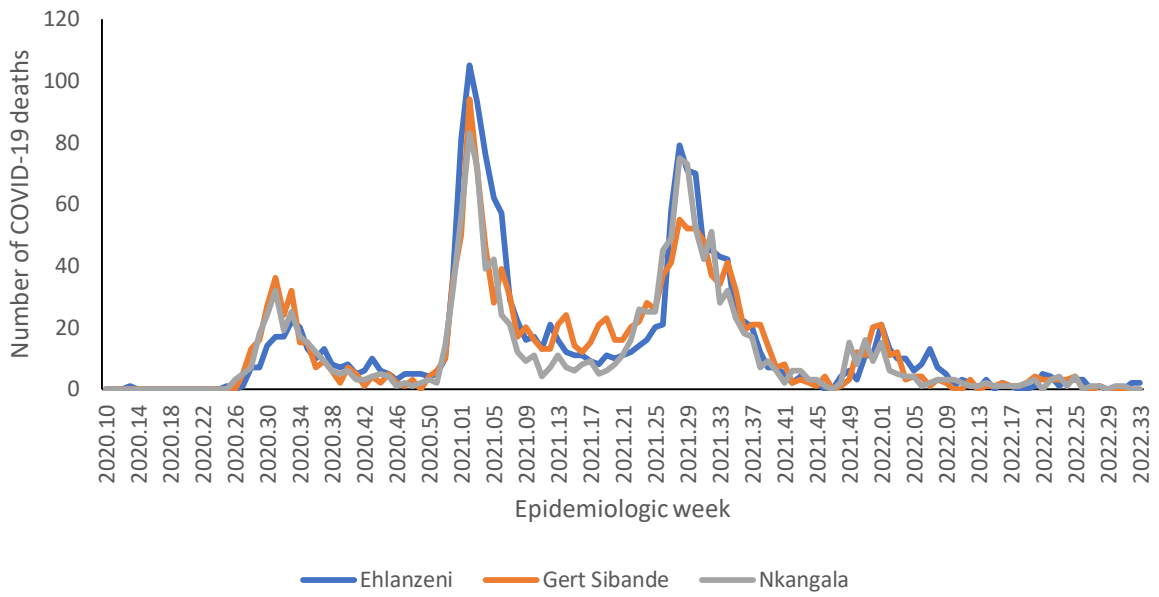
## Mpumalanga



**Figure 22:** Number of reported COVID-19 admissions by health sector and epidemiologic week of diagnosis, Mpumalanga, 5 March 2020-20 August 2022, N=22,999



**Figure 23:** Number of reported COVID-19 admissions, by district and epidemiologic week, Mpumalanga, 5 March 2020-20 August 2022, N=22,999



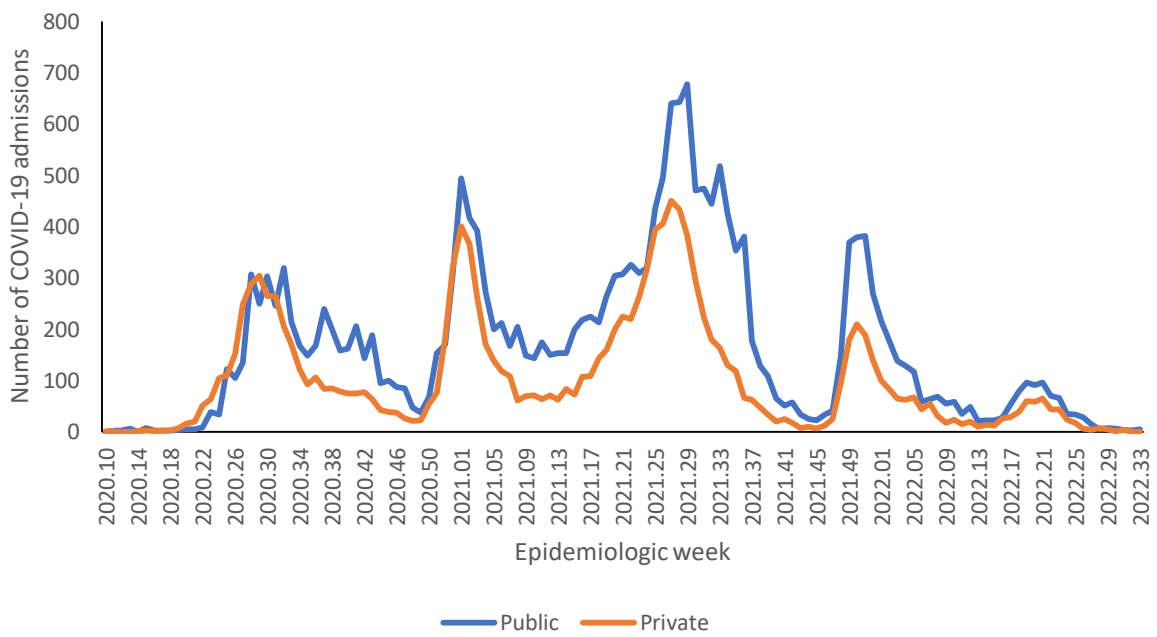
**Figure 24:** Number of reported COVID-19 in-hospital deaths, by district and epidemiologic week, Mpumalanga, 5 March 2020-20 August 2022, N=4,925



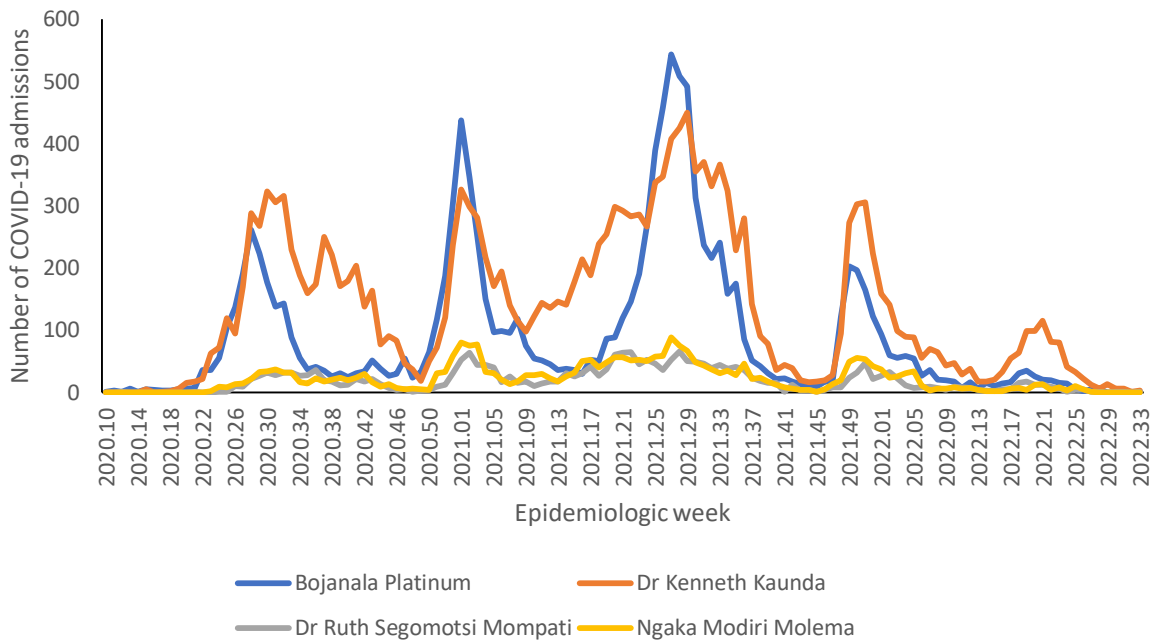
**Table 10:** Previous 14 days and current 14 days average COVID-19 admissions and deaths and percentage changes, Mpumalanga, 23 July-20 August 2022.

District	Previous 14 days admissions average	Current 14 days admissions average	Percentage change in admissions	Previous 14 days deaths average	Current 14 days deaths average	Percentage change in deaths
Ehlanzeni	1.00	0.71	-28.57	0.00	0.29	0.00
Gert Sibande	0.36	0.50	40.00	0.00	0.00	0.00
Nkangala	0.36	0.14	-60.00	0.14	0.00	-100.00

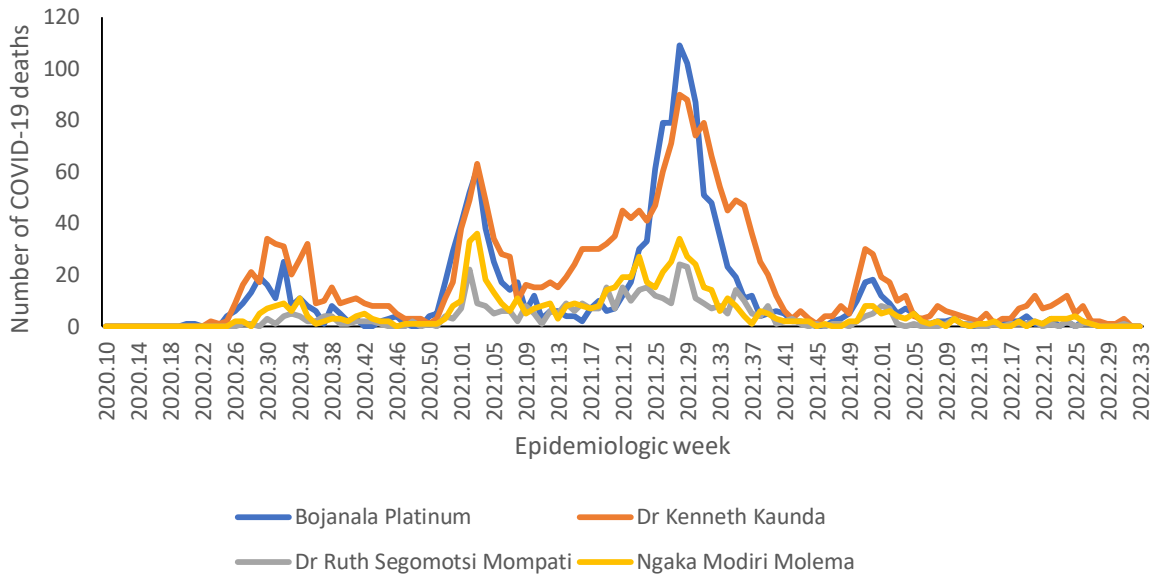
## North West



**Figure 25:** Number of reported COVID-19 admissions by health sector and epidemiologic week of diagnosis, North West, 5 March 2020-20 August 2022, N=34,387



**Figure 26:** Number of reported COVID-19 admissions, by district and epidemiologic week, North West, 5 March 2020-20 August 2022, N=34,387

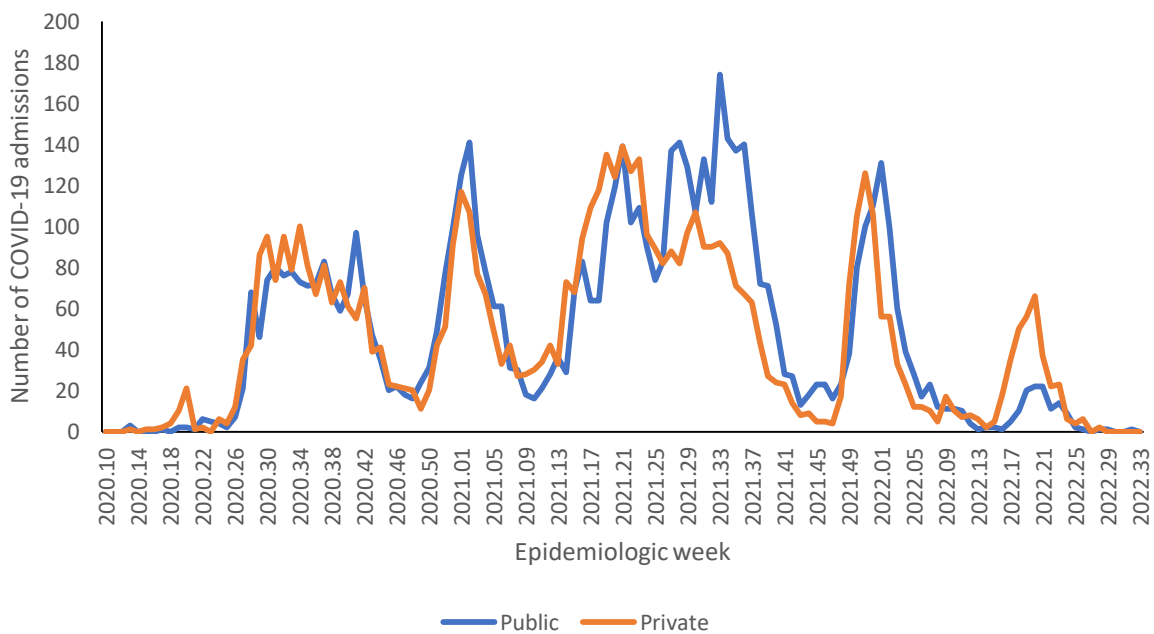


**Figure 27:** Number of reported COVID-19 in-hospital deaths, by district and epidemiologic week, North West, 5 March 2020-20 August 2022, N=5,015

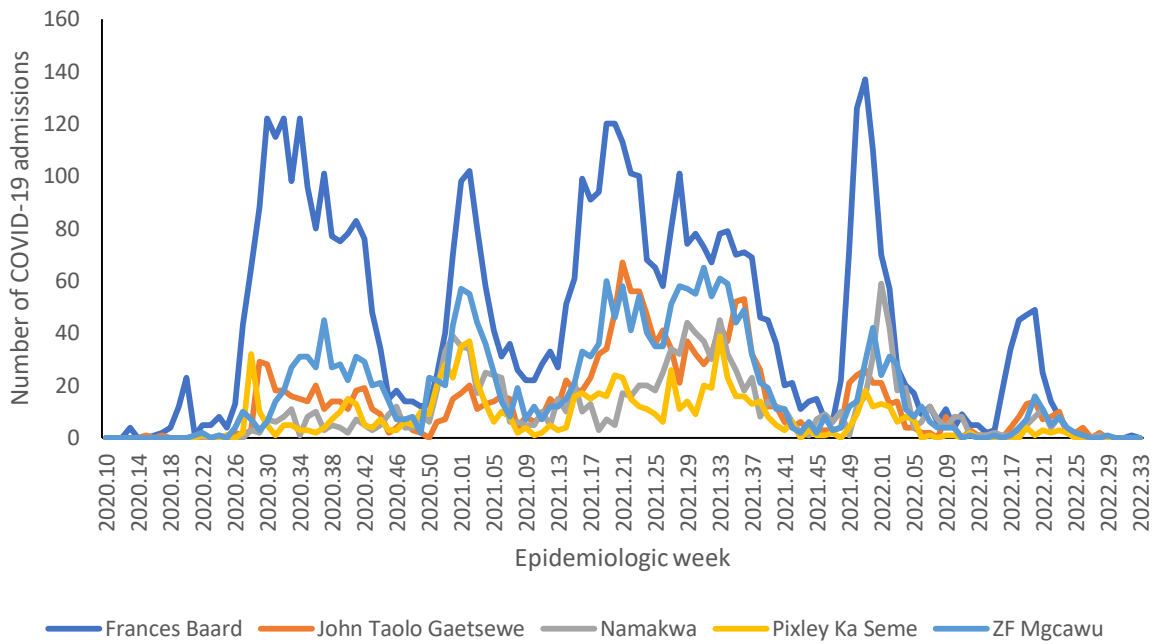
**Table 11:** Previous 14 days and current 14 days average COVID-19 admissions and deaths and percentage changes, North West, 23 July-20 August 2022.

District	Previous 14 days admissions average	Current 14 days admissions average	Percentage change in admissions	Previous 14 days deaths average	Current 14 days deaths average	Percentage change in deaths
Bojanala Platinum	0.07	0.14	100.00	0.00	0.00	0.00
Dr Kenneth Kaunda	0.86	0.29	-66.67	0.29	0.00	-100.00
Dr Ruth Segomotsi Mompoti	0.14	0.07	-50.00	0.07	0.00	-100.00
Ngaka Modiri Molema	0.00	0.00	0.00	0.00	0.00	0.00

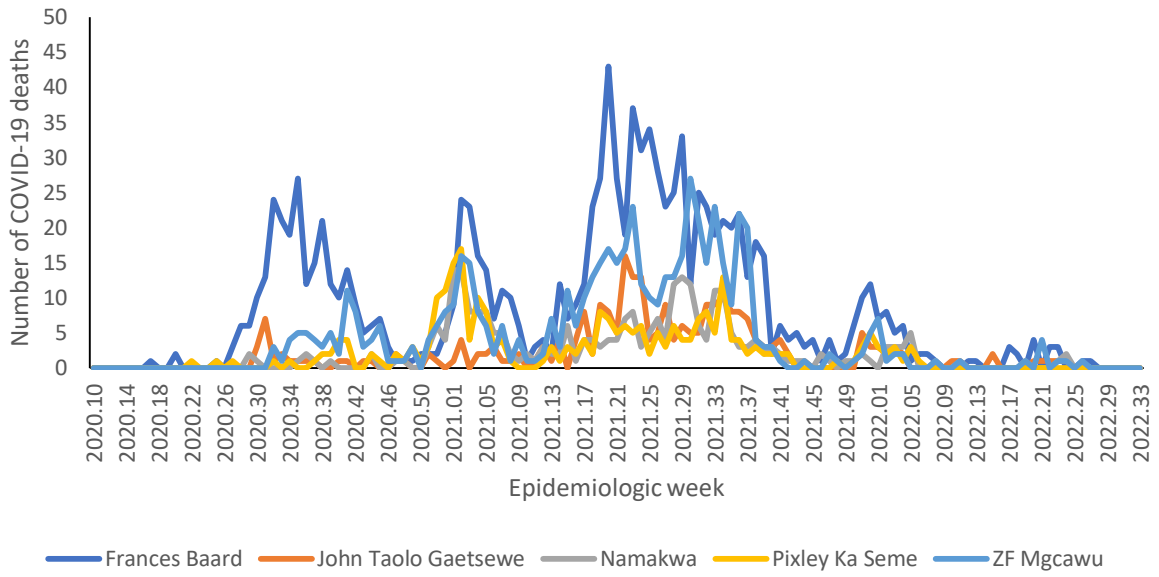
## Northern Cape



**Figure 28:** Number of reported COVID-19 admissions by health sector and epidemiologic week of diagnosis, Northern Cape, 5 March 2020-20 August 2022, N=11,935



**Figure 29:** Number of reported COVID-19 admissions by district and epidemiologic week, Northern Cape, 5 March 2020-20 August 2022, N=11,935



**Figure 30:** Number of reported COVID-19 in-hospital deaths, by district and epidemiologic week, Northern Cape, 5 March 2020-20 August 2022, N=2,460

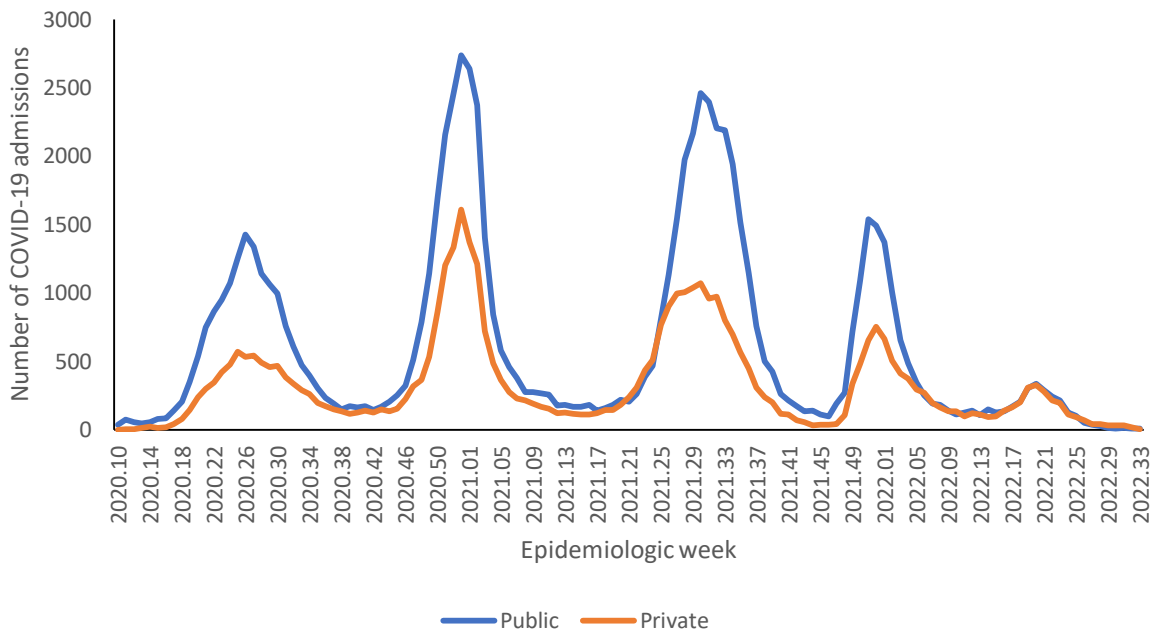


**Table 12:** Previous 14 days and current 14 days average COVID-19 admissions and deaths and percentage changes, Northern Cape, 23 July-20 August 2022.

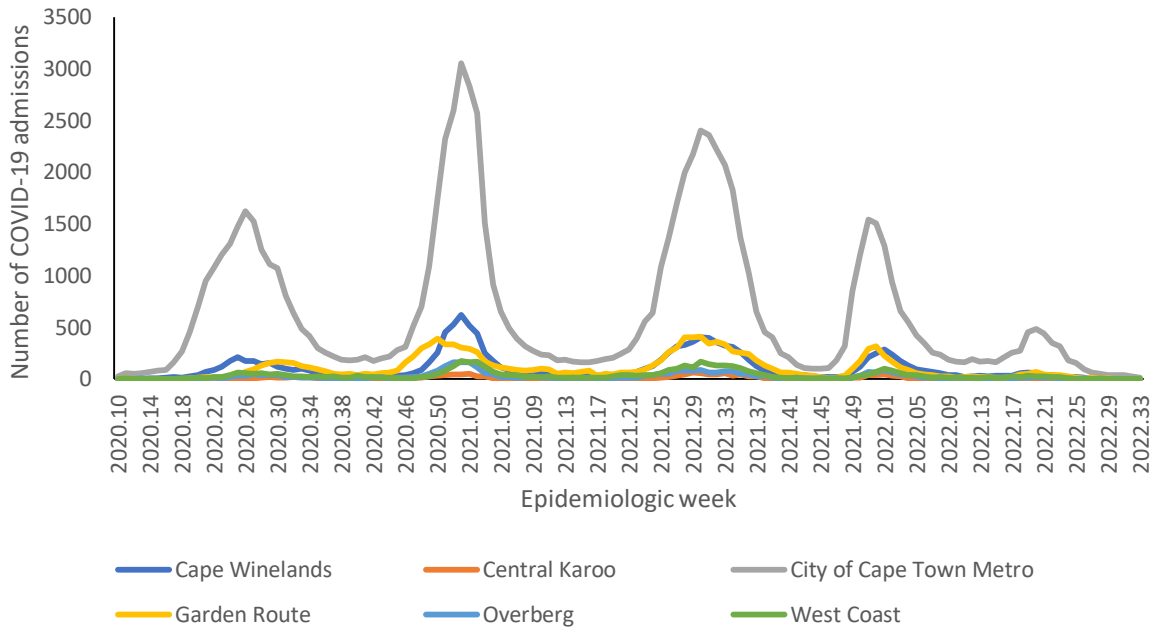
District	Previous 14 days admissions average	Current 14 days admissions average	Percentage change in admissions	Previous 14 days deaths average	Current 14 days deaths average	Percentage change in deaths
Frances Baard	0.00	0.07	0.00	0.00	0.00	0.00
John Taolo Gaetsewe	0.00	0.00	0.00	0.00	0.00	0.00
Namakwa	0.00	0.00	0.00	0.00	0.00	0.00
Pixley Ka Seme	0.00	0.00	0.00	0.00	0.00	0.00
ZF Mgcawu	0.00	0.00	0.00	0.00	0.00	0.00



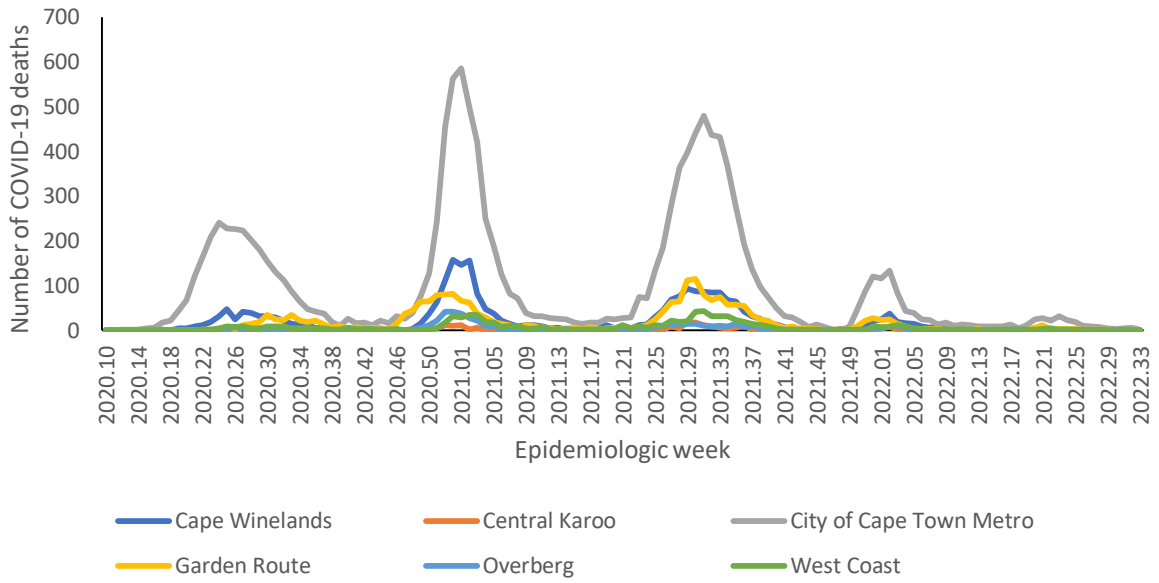
## Western Cape



**Figure 31:** Number of reported COVID-19 admissions by health sector and epidemiologic week of diagnosis, Western Cape, 5 March 2020-20 August 2022, N=120,948



**Figure 32:** Number of reported COVID-19 admissions, by district and epidemiologic week, Western Cape, 5 March 2020-20 August 2022, N=120,948



**Figure 33:** Number of reported COVID-19 in-hospital deaths, by district and epidemiologic week, Western Cape, 5 March 2020-20 August 2022, N=18,888

**Table 13:** Previous 14 days and current 14 days average COVID-19 admissions and deaths and percentage changes, Western Cape, 23 July-20 August 2022.

District	Previous 14 days admissions average	Current 14 days admissions average	Percentage change in admissions	Previous 14 days deaths average	Current 14 days deaths average	Percentage change in deaths
Cape Winelands	0.50	0.21	-57.14	0.00	0.07	0.00
Central Karoo	0.00	0.00	0.00	0.00	0.00	0.00
City of Cape Town Metro	5.29	2.64	-50.00	0.57	0.57	0.00
Garden Route	0.14	0.14	0.00	0.00	0.07	0.00
Overberg	0.29	0.07	-75.00	0.00	0.00	0.00
West Coast	0.14	0.07	-50.00	0.07	0.00	-100.00

## Limitation

DATCOV now includes reporting from all hospitals with COVID-19 admissions but many hospitals are yet to reach complete submission of historic data. Data quality in a surveillance system is dependent on the information submitted by healthcare institutions. It is not possible for the NICD to verify or check the quality of all these data, however, the NICD has built-in data quality checks. Delays in reporting of admissions and deaths may affect the numbers reported in the most recent week. The National Department of Health have recruited data capturers to support hospitals to improve data submission.

As hospitals reached capacity, admission criteria may change and therefore influence trends and inferences about the progression of the epidemic. DATCOV only reports hospital-based admissions and deaths and therefore does not include deaths occurring outside hospitals. DATCOV now has a module to record out-of-hospital deaths.

Severity data has some inherent limitations. We rely on a proxy indicator for severity and do not have clinical or laboratory parameters to ascertain clinical severity. In the early and late phases of the wave there is likely to be lower severity due to there being sufficient hospital capacity. It may take a few weeks for hospitalisation outcomes to accumulate. Early reporting on case fatality ratio is also biased particularly in older adults who may have longer admissions and are more likely to die.

## Acknowledgements

All public and private sector hospitals submitting data to DATCOV

Private hospital groups submitting data to DATCOV:

- Netcare
- Life Healthcare
- Mediclinic Southern Africa
- National Hospital Network (NHN)
- Clinix Health Group
- Lenmed
- Joint Medical Holdings (JMH)

## Appendix

**Table 14:** Percentage incidence change in hospital admissions over 14 days, by district, South Africa, 6 August 2022-20 August 2022.

Province	District	Total admissions	Incidence (per 100k)	New admissions	New admissions incidence (per 100k)	% average change (14 days)
Eastern Cape	Alfred Nzo	2766	335.47	1	0.12	0.00
	Amathole	3320	424.25	0	0.00	100.00
	Buffalo City Metro	10681	1349.48	0	0.00	100.00
	Chris Hani	5328	747.73	2	0.28	100.00
	Joe Gqabi	1218	355.19	2	0.58	-33.33
	Nelson Mandela Bay Metro	16986	1407.99	6	0.50	0.00
	O R Tambo	5047	329.10	0	0.00	-100.00
	Sarah Baartman	3428	710.37	2	0.41	0.00
Free State	Fezile Dabi	3852	753.00	0	0.00	-100.00
	Lejweleputswa	6761	1035.09	2	0.31	0.00
	Mangaung Metro	15415	1758.94	0	0.00	-100.00
	Thabo Mofutsanyana	5863	767.12	0	0.00	-100.00
	Xhariep	741	583.27	0	0.00	-100.00
Gauteng	City of Johannesburg Metro	56743	943.64	13	0.22	-43.48
	City of Tshwane Metro	44629	1168.19	30	0.79	0.00
	Ekurhuleni Metro	34448	851.33	3	0.07	-70.00
	Sedibeng	10221	1049.37	1	0.10	-85.71
	West Rand	13928	1456.27	3	0.31	0.00
KwaZulu-Natal	Amajuba	4735	835.09	1	0.18	-66.67
	eThekweni Metro	40811	1017.83	5	0.12	-70.59
	Harry Gwala	2804	554.01	0	0.00	-100.00
	iLembe	3091	444.29	0	0.00	-100.00
	King Cetshwayo	9798	1026.91	1	0.10	-83.33
	Ugu	5961	741.00	3	0.37	200.00
	uMgungundlovu	11960	1049.20	7	0.61	133.33
	uMkhanyakude	1533	222.82	3	0.44	50.00
	Umzinyathi	2443	433.09	0	0.00	-100.00
	UThukela	3341	477.03	1	0.14	100.00
	Zululand	2548	288.18	0	0.00	100.00
Limpopo	Capricorn	8731	657.98	1	0.08	-66.67
	Mopani	3836	318.96	0	0.00	-100.00
	Sekhukhune	2152	176.88	1	0.08	100.00
	Vhembe	3091	216.10	3	0.21	-40.00



	Waterberg	3352	446.84	0	0.00	-100.00
Mpumalanga	Ehlanzeni	8152	445.86	3	0.16	-57.14
	Gert Sibande	7840	618.36	1	0.08	-87.50
	Nkangala	7007	425.36	0	0.00	-100.00
North West	Bojanala Platinum	11431	586.76	1	0.05	0.00
	Dr Kenneth Kaunda	17726	2206.64	3	0.37	200.00
	Dr Ruth Segomotsi Mompati	2394	513.16	1	0.21	100.00
	Ngaka Modiri Molema	2836	313.42	0	0.00	100.00
Northern Cape	Frances Baard	5602	1346.73	0	0.00	-100.00
	John Taolo Gaetsewe	1704	616.59	0	0.00	100.00
	Namakwa	1366	1167.61	0	0.00	100.00
	Pixley Ka Seme	932	442.94	0	0.00	100.00
	ZF Mgcawu	2331	822.76	0	0.00	100.00
Western Cape	Cape Winelands	13627	1425.70	2	0.21	-33.33
	Central Karoo	1405	1853.76	0	0.00	100.00
	City of Cape Town Metro	84667	1809.55	20	0.43	-37.50
	Garden Route	13355	2125.77	0	0.00	-100.00
	Overberg	3322	1087.29	1	0.33	0.00
	West Coast	4581	975.73	3	0.64	100.00



**Table 15:** Number of reported COVID-19 admissions and in-hospital deaths by age and gender, South Africa, 5 March 2020-20 August 2022.

Age Group (Years)	ADMISSIONS				DEATHS			
	Female	Male	Unknown	Total	Female	Male	Unknown	Total
0-4	7388	9400	54	16842	180	210	4	394
5-9	2053	2736	8	4797	30	36	0	66
10-14	2726	2825	12	5563	68	71	1	140
15-19	7394	4159	6	11559	164	139	0	303
20-24	11357	5742	10	17109	364	276	1	641
25-29	17923	8115	12	26050	776	536	0	1312
30-34	22942	12767	14	35723	1313	1130	1	2444
35-39	23478	16704	21	40203	1876	1777	4	3657
40-44	20716	18402	16	39134	2290	2366	0	4656
45-49	22791	22303	12	45106	3232	3446	1	6679
50-54	26320	24691	10	51021	4405	4579	2	8986
55-59	29217	26678	16	55911	6217	6253	5	12475
60-64	26078	23847	18	49943	6698	6904	6	13608
65-69	22563	20131	17	42711	6942	6515	6	13463
70-74	19390	17107	19	36516	6189	6049	4	12242
75-79	14786	12217	9	27012	4937	4626	3	9566
80-84	11343	8079	8	19430	4055	3187	3	7245
85-89	6252	3914	2	10168	2295	1681	0	3976
90-94	2755	1397	1	4153	1121	662	0	1783
>=95	839	390	3	1232	371	164	0	535
Unknown	898	699	47	1644	48	43	0	91
<b>Total</b>	<b>299209</b>	<b>242303</b>	<b>315</b>	<b>541827</b>	<b>53571</b>	<b>50650</b>	<b>41</b>	<b>104262</b>



**NATIONAL INSTITUTE FOR  
COMMUNICABLE DISEASES**

Division of the National Health Laboratory Service