

COVID-19 Hospital Surveillance

Update: Week 41, 2022

Overview of report

This report summarises data of COVID-19 cases admitted to hospital surveillance sites in all provinces. The report is based on data collected from 5 March 2020 to 15 October 2022.

Highlights

- There was a 21% decrease in the number of new admissions in week 41 2022 (232) compared to the number of admissions in week 40 2022 (293). Delays in reporting of admissions and deaths may affect the numbers reported in the most recent week.
- Gauteng had the highest number of admissions in the past week (93/232, 40.1%), followed by Western Cape (50/232, 21.5%) and KwaZulu-Natal (40/232, 17.2%). Northern Cape has the lowest number of admissions (2/232, 0.8%) in the past week.
- The highest weekly incidence risk of COVID-19 admissions reported in week 39 of 2022 was in the ≥65-year age group (1.7 admissions per 100 000 persons), and the lowest weekly incidence risk was in 20-34-year age group (0.1 admissions per 100 000 persons).

Methods

Data on hospitalisation was accessed from DATCOV, a hospital surveillance system for COVID-19 admissions, initiated on the 1 April 2020. A COVID-19 case was defined as a person with a positive reverse transcriptase polymerase chain reaction (RT-PCR) assay for SARS-CoV-2 or a person who had a positive SARS-CoV-2 antigen test who was admitted to hospital.

Data on SARS-CoV-2 cases diagnosed in public and private laboratories submitted to the NICD were reported from the line list on the NMCSS.

Case fatality ratio (CFR) was calculated for all closed cases, i.e. COVID-19 deaths divided by COVID-19 deaths plus COVID-19 discharges, excluding individuals who are still admitted in hospital. For the calculation of cumulative incidence risks, StatsSA mid-year population estimates for 2021 were utilised. For comparisons of change in admission, we used 14-day daily average admissions in the current 14-day period compared to the previous 14-day period.

Severity was defined as patients receiving oxygen or invasive ventilation, treated in high care or intensive care wards, developing acute respiratory distress syndrome, or died. While oxygen, ventilation and ward of stay variables are updated daily for all admissions in the private sector, there may be delays with the data being updated in the public sector. Also, as patients remain in hospital their condition may change and percentage of severity may change over time.

Data are submitted by public and private hospitals that have agreed to report COVID-19 admissions through DATCOV surveillance in all nine provinces of South Africa. On 15 July 2020, the National Health Council decided that all hospitals should report to DATCOV. As of 15 October 2022, a total of 667 facilities submitted data on hospitalised COVID-19 cases, 406 from public sector and 262 from private sector (Table 1). This reflects 100% coverage of all public and private hospitals that have had COVID-19 admissions. As new hospitals join the surveillance system, they have retrospectively captured all admissions recorded although there may be some backlogs in retrospective data capture.

Table 1: Number of hospitals reporting data on COVID-19 admissions by province and sector, South Africa, 5 March 2020-15 October 2022.

Facilities reporting	Public	Private
Eastern Cape	86	18
Free State	34	20
Gauteng	39	99
KwaZulu-Natal	71	47
Limpopo	41	7
Mpumalanga	31	9
North West	17	13
Northern Cape	29	6
Western Cape	59	43
South Africa	406	262

Results

Epidemiological and demographic trends in admissions

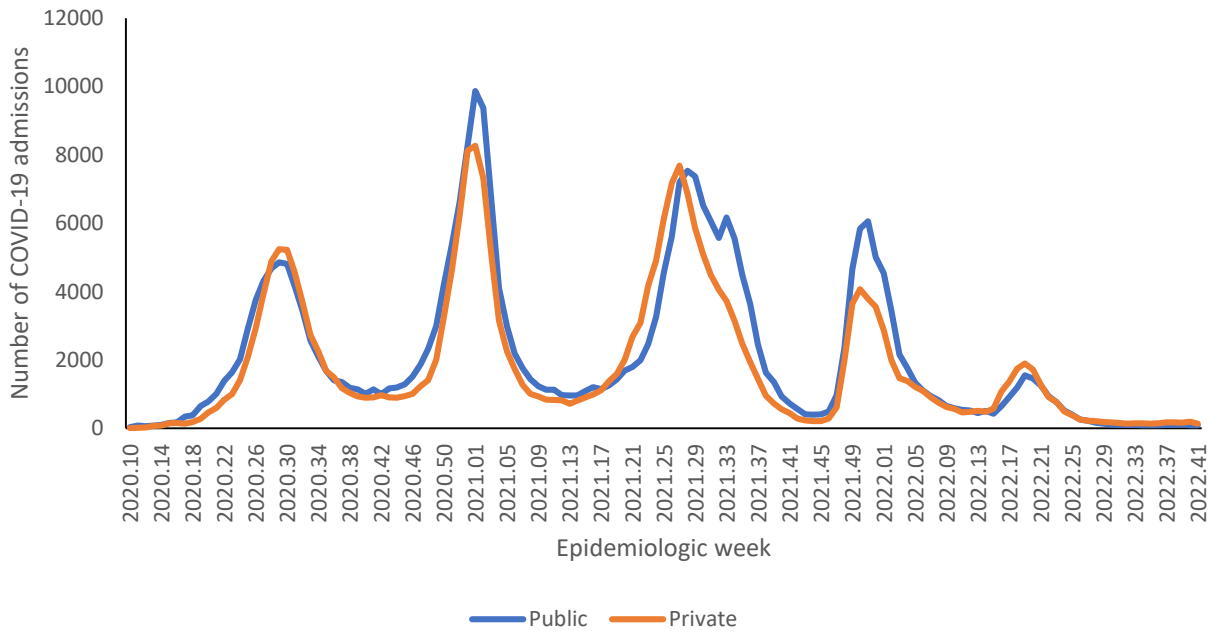


Figure 1: Number of reported COVID-19 admissions by health sector and epidemiologic week of diagnosis, South Africa, 5 March 2020-15 October 2022, N=543,678

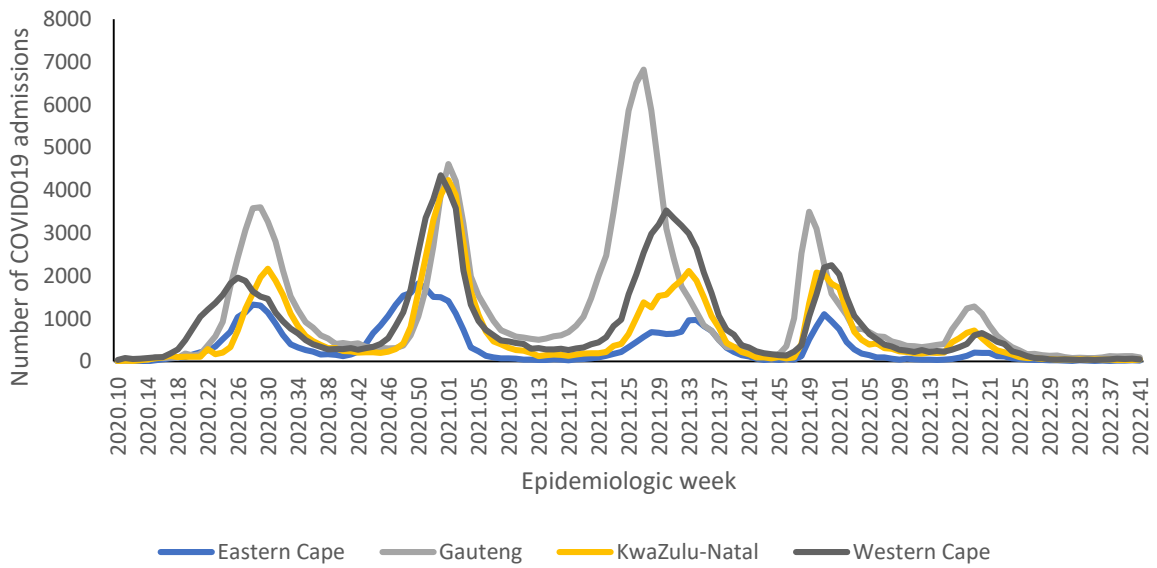


Figure 2a: Number of reported COVID-19 admissions, by provinces with highest admissions and epidemiologic week of diagnosis, South Africa, 5 March 2020-15 October 2022, N=543,678

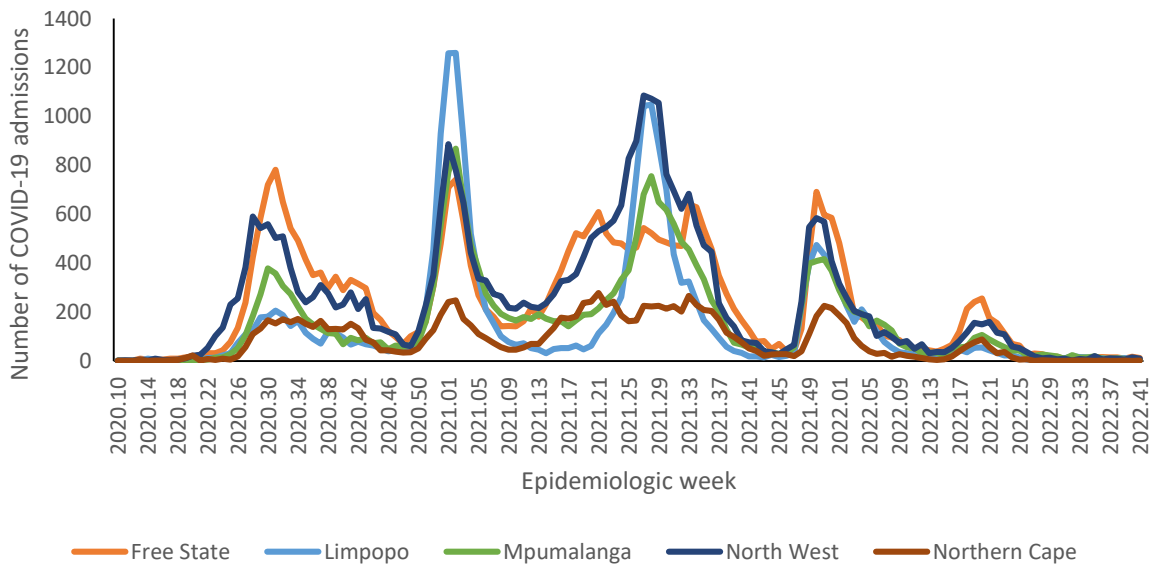


Figure 2b: Number of reported COVID-19 admissions, by provinces with lowest admissions and epidemiologic week of diagnosis, South Africa, 5 March 2020-15 October 2022, N=543,678

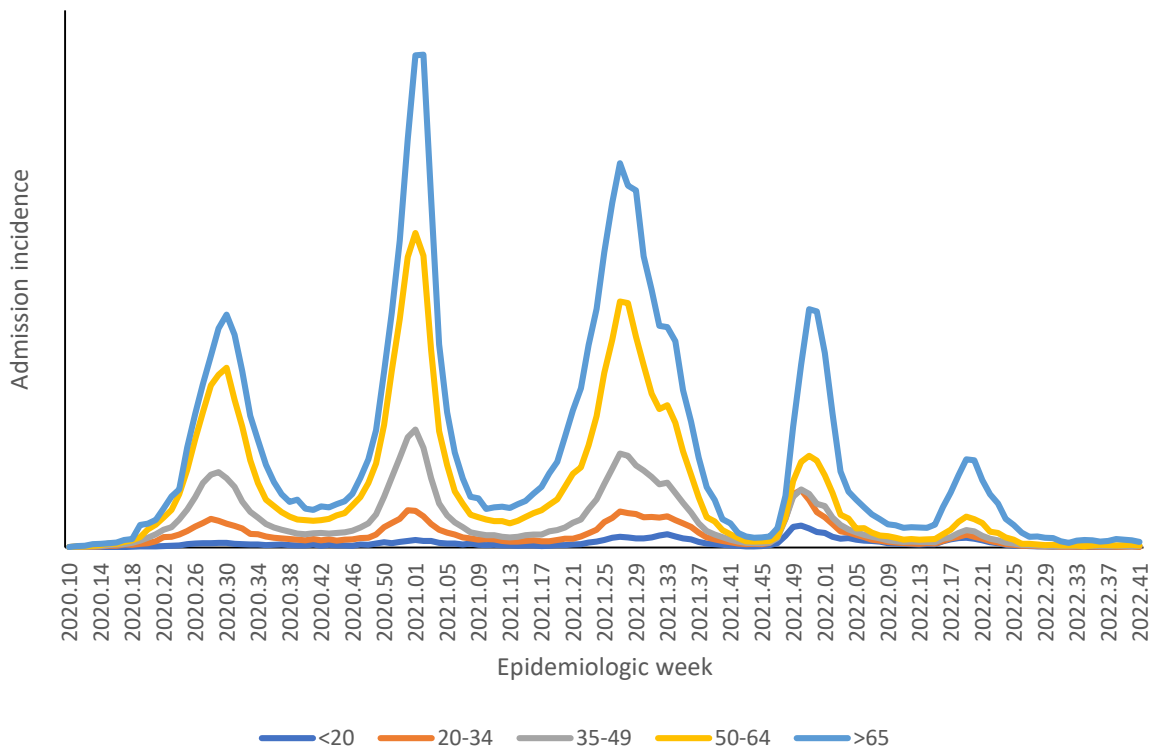


Figure 3: Incidence risk of COVID-19 admissions per 100,000 persons, by age group and epidemiologic week of diagnosis, South Africa, 5 March 2020-15 October 2022, N=543,678

Epidemiological and demographic trends in in-hospital mortality

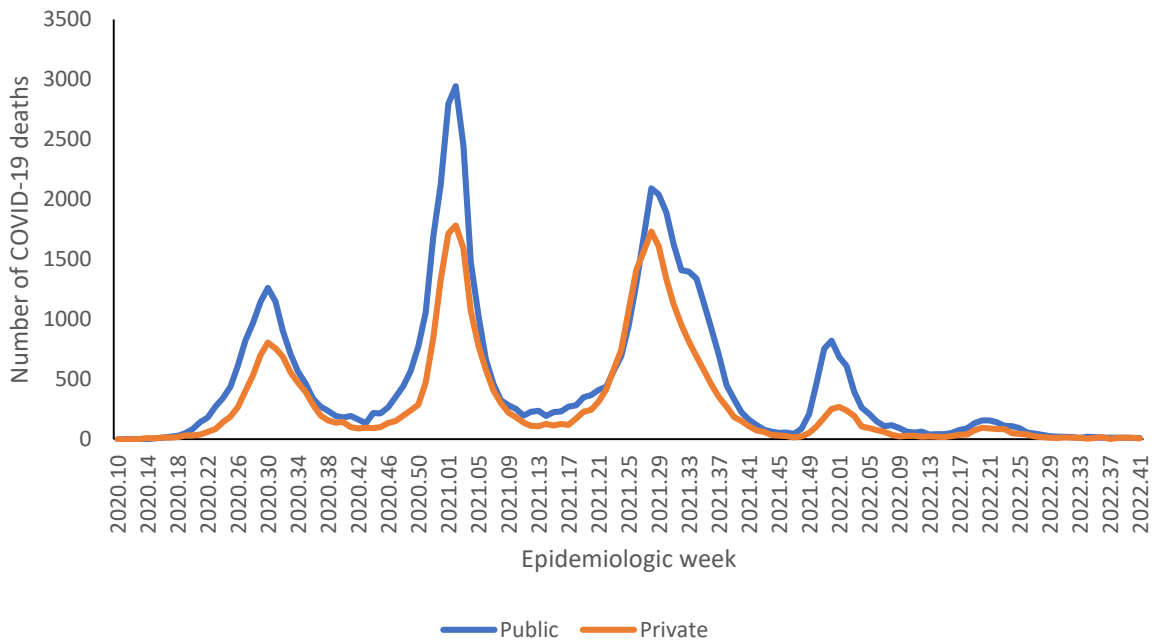


Figure 4: Number of reported COVID-19 in-hospital deaths, by health sector and epidemiologic week, South Africa, 5 March 2020-15 October 2022, N=104,435

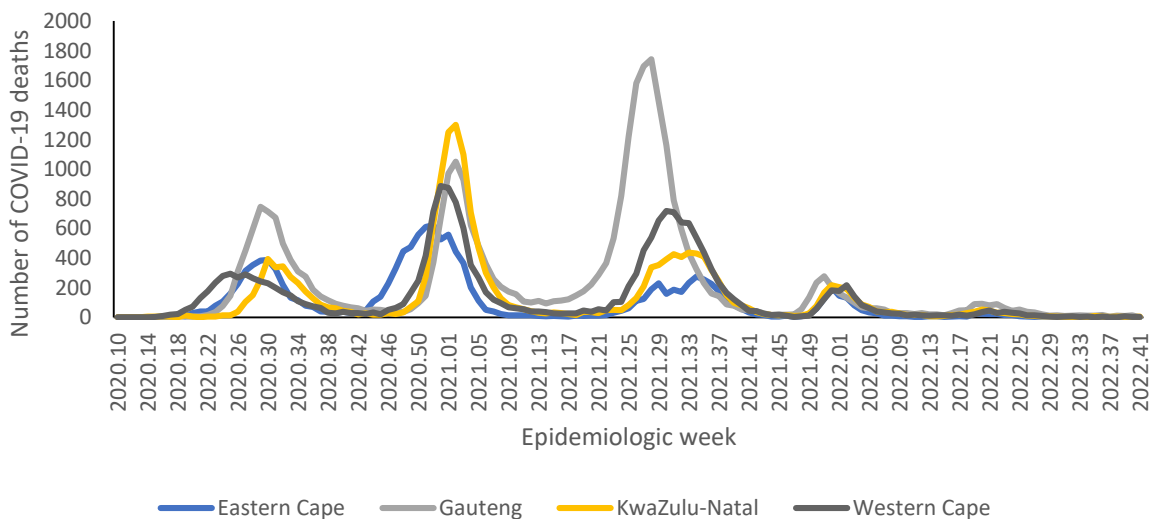


Figure 5a: Number of reported COVID-19 in-hospital deaths, by province with highest deaths and epidemiologic week of death, South Africa, 5 March 2020-15 October 2022, N=104,435

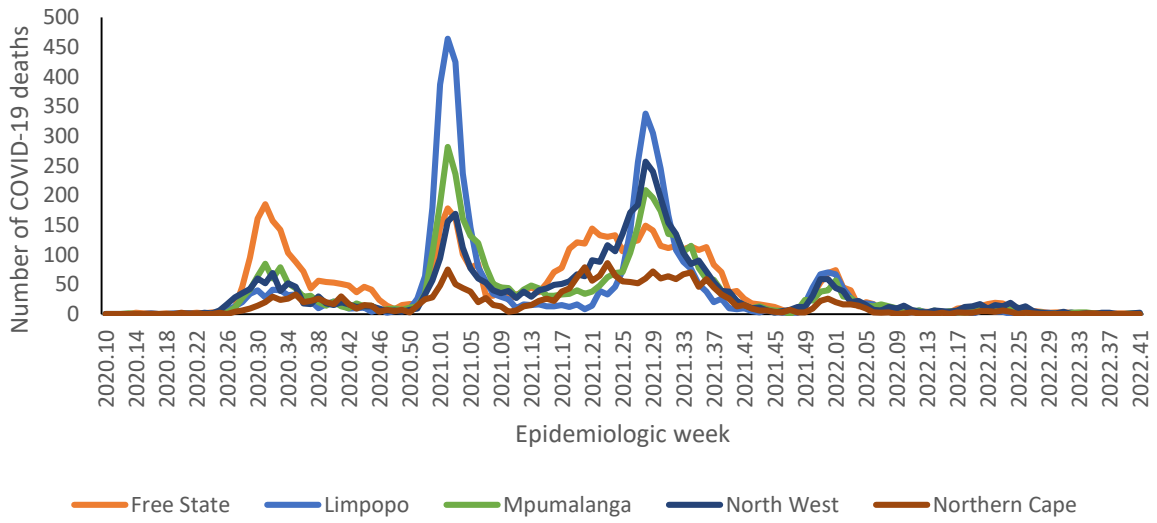


Figure 5b: Number of reported COVID-19 in-hospital deaths, by province with lowest deaths and epidemiologic week of death, South Africa, 5 March 2020-15 October 2022, N=104,435

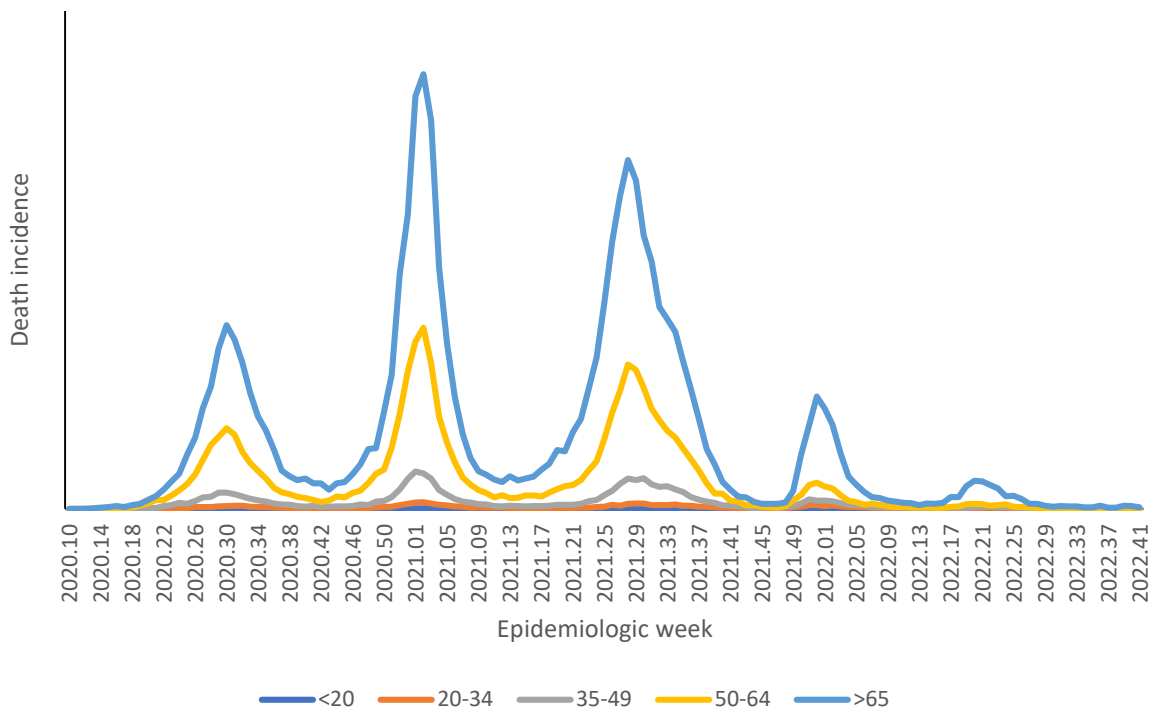


Figure 6: Incidence risk of COVID-19 in-hospital deaths per 100,000 persons, by age group and epidemiologic week of death, South Africa, 5 March 2020-15 October 2022, N=104,435

Provincial trends

Table 2: Number and cumulative incidence risk of COVID-19 hospitalisations and in-hospital deaths per 100,000 persons by province, South Africa, 5 March 2020-15 October 2022.

Province	Provincial Population mid 2020*	Cumulative admissions	Cumulative incidence risk of admissions / 100,000	Cumulative deaths	Cumulative incidence risk of deaths / 100,000
Eastern Cape	6676590	48840	731.5	13309	199.3
Free State	2932441	32688	1114.7	6156	209.9
Gauteng	15810388	160 714	1016.5	30692	194.1
KwaZulu-Natal	11513575	89536	777.7	17605	152.9
Limpopo	5926724	21207	357.8	5336	90.0
Mpumalanga	4743584	23059	486.1	4931	104.0
North West	4122854	34 275	831.3	5019	121.7
Northern Cape	1303047	11 923	915.0	2460	188.8
Western Cape	7113776	121 436	1707.1	18927	266.1
South Africa	60142978	543 678	904.0	104 435	173.6

*StatsSA mid-year population estimates 2020

Table 3: Previous 14 days and current 14 days daily average COVID-19 admissions and deaths and percentage changes, South Africa, 17 September-15 October 2022.

Province	Hospital admissions		Percentage change in admissions	Hospital deaths		Percentage change in deaths
	Previous 14 days average admissions	Current 14 days average admissions		Previous 14 days average deaths	Current 14 days average deaths	
Eastern Cape	3.00	2.93	-2.38	0.29	0.36	25.00
Free State	1.64	2.07	26.09	0.14	0.00	-100.00
Gauteng	17.21	15.57	-9.54	1.50	1.14	-23.81
KwaZulu-Natal	5.29	5.43	2.70	0.64	0.36	-44.44
Limpopo	1.50	0.71	-52.38	0.00	0.00	0.00
Mpumalanga	1.36	0.79	-42.11	0.00	0.14	0.00
North West	1.14	1.64	43.75	0.00	0.21	0.00
Northern Cape	0.07	0.14	100.00	0.00	0.00	0.00
Western Cape	8.43	8.21	-2.54	0.57	0.50	-12.50

* Reporting of new admissions in the most recent week may be delayed

Table 4: Previous 7 days and current 7 days daily average COVID-19 admissions and deaths and percentage changes, South Africa, 24 September-15 October 2022.

Province	Hospital admissions		Percentage change in admissions	Hospital deaths		Percentage change in deaths
	Previous 7 days average admissions	Current 7 days average admissions		Previous 7 days average deaths	Current 7 days average deaths	
Eastern Cape	3.43	2.43	-29.17	0.43	0.29	-33.33
Free State	2.43	1.71	-29.41	0.00	0.00	0.00
Gauteng	17.86	13.29	-25.60	2.00	0.29	-85.71
KwaZulu-Natal	5.14	5.71	11.11	0.00	0.71	0.00
Limpopo	0.71	0.71	0.00	0.00	0.00	0.00
Mpumalanga	1.00	0.57	-42.86	0.14	0.14	0.00
North West	2.00	1.29	-35.71	0.14	0.29	100.00
Northern Cape	0.00	0.29	0.00	0.00	0.00	0.00
Western Cape	9.29	7.14	-23.08	0.43	0.57	33.33

* Reporting of new admissions in the most recent week may be delayed



Eastern Cape

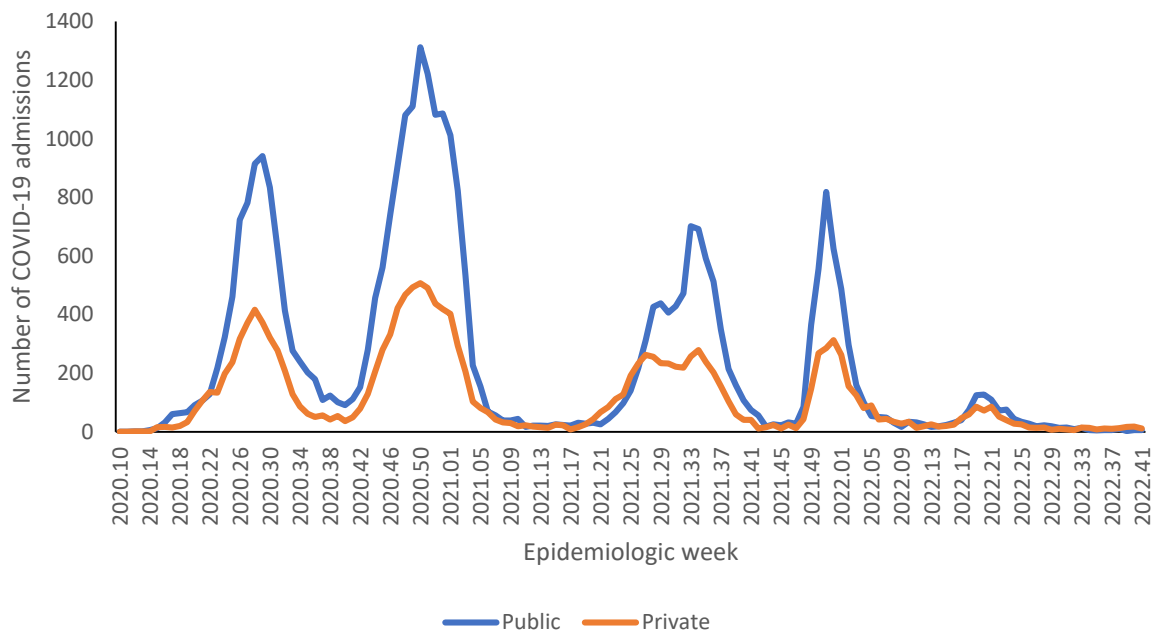


Figure 7: Number of reported COVID-19 admissions by health sector and epidemiologic week of diagnosis, Eastern Cape, 5 March 2020-15 October 2022, N=48,840

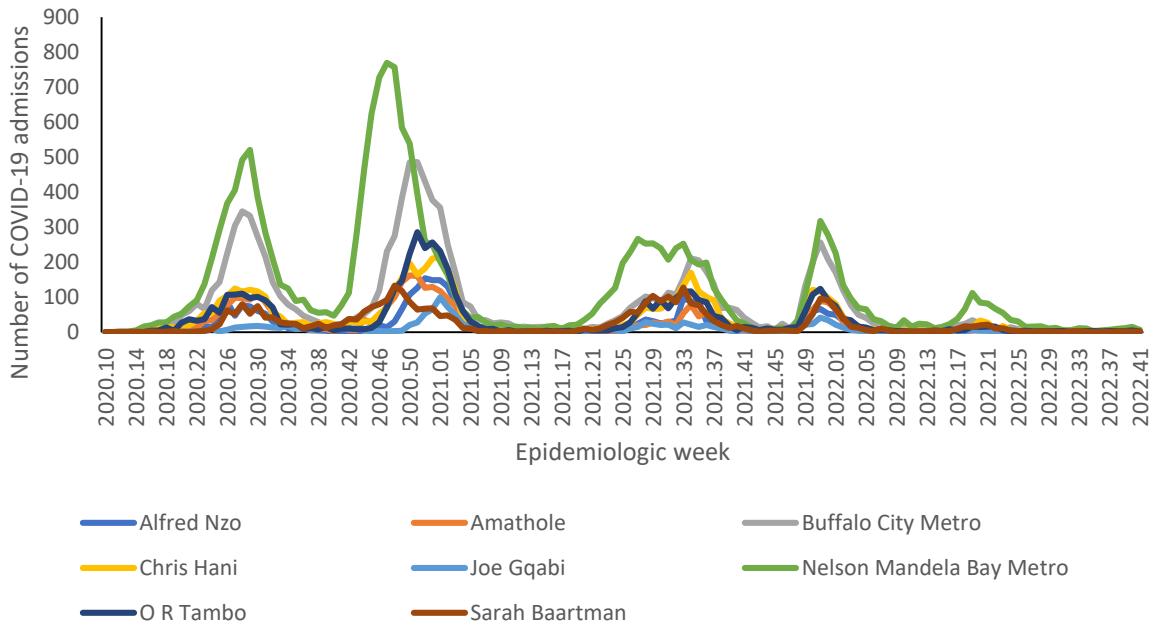


Figure 8: Number of reported COVID-19 admissions, by district and epidemiologic week, Eastern Cape, 5 March 2020-15 October 2022, N=48,840

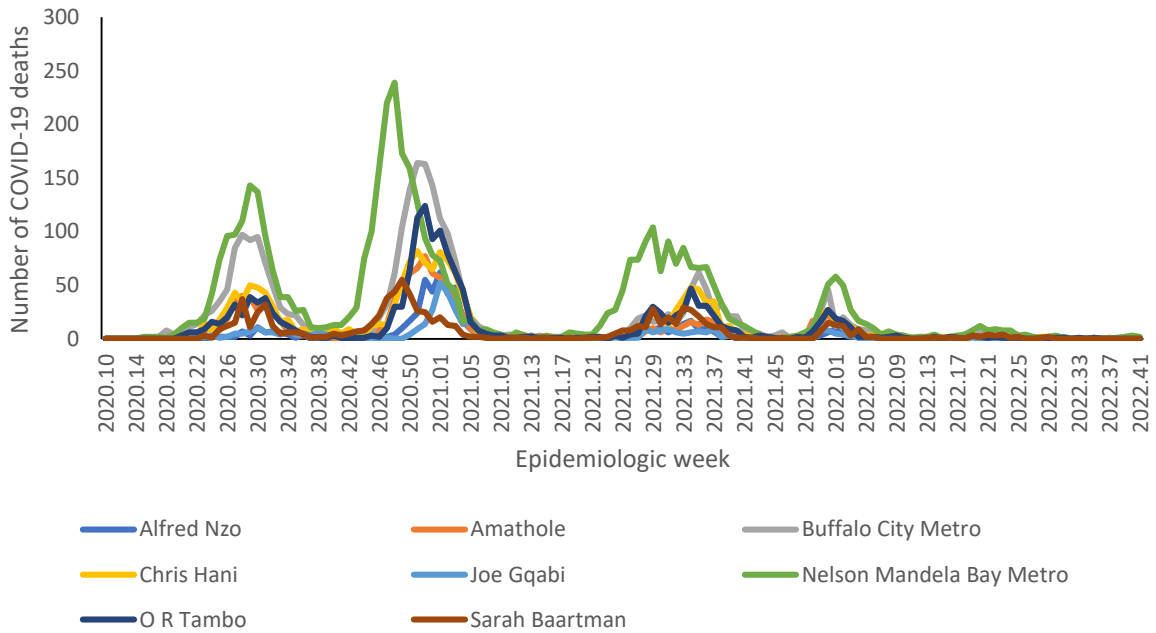


Figure 9: Number of reported COVID-19 in-hospital deaths, by district and epidemiologic week, Eastern Cape, 5 March 2020-15 October 2022, N=13,309



Table 5: Previous 14 days and current 14 days average COVID-19 admissions and deaths and percentage changes, Eastern Cape, 17 September-15 October 2022.

District	Previous 14 days admissions average	Current 14 days admissions average	Percentage change in admissions	Previous 14 days deaths average	Current 14 days deaths average	Percentage change in deaths
Alfred Nzo	0.14	0.14	0.00	0.00	0.00	0.00
Amathole	0.07	0.14	100.00	0.07	0.00	-100.00
Buffalo City Metro	0.21	0.29	33.33	0.00	0.00	0.00
Chris Hani	0.29	0.07	-75.00	0.00	0.00	0.00
Joe Gqabi	0.14	0.00	-100.00	0.00	0.00	0.00
Nelson Mandela Bay	1.43	1.57	10.00	0.21	0.36	66.67
O R Tambo	0.43	0.50	16.67	0.00	0.00	0.00
Sarah Baartman	0.29	0.21	-25.00	0.00	0.00	0.00



Free State

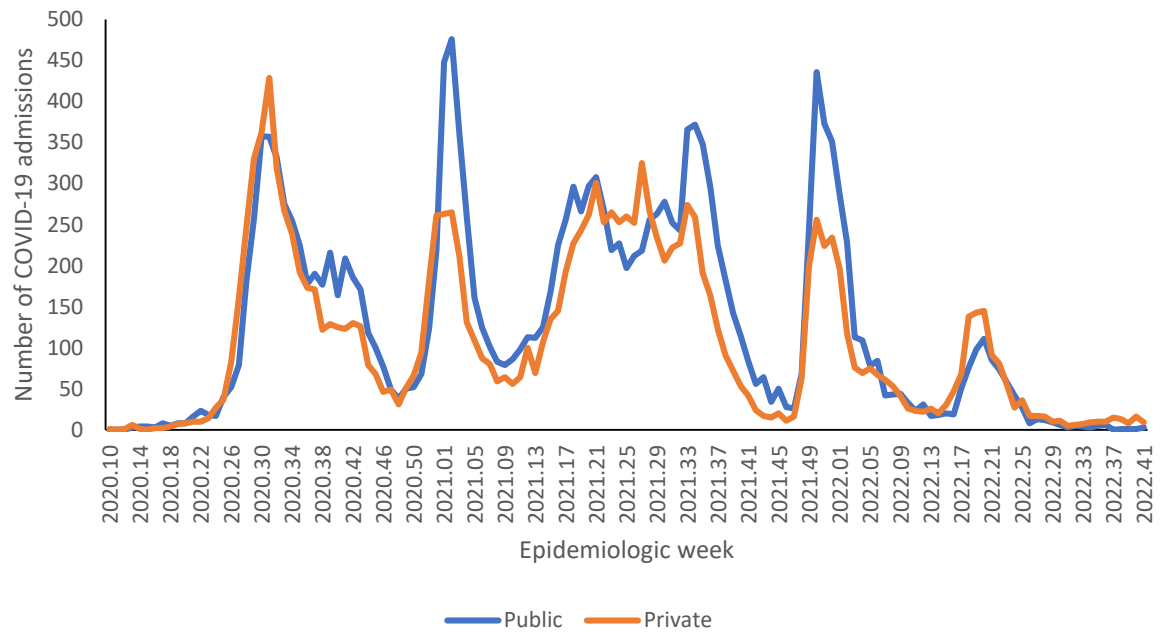


Figure 10: Number of reported COVID-19 admissions by health sector and epidemiologic week of diagnosis, Free State, 5 March 2020-15 October 2022, N=32,688

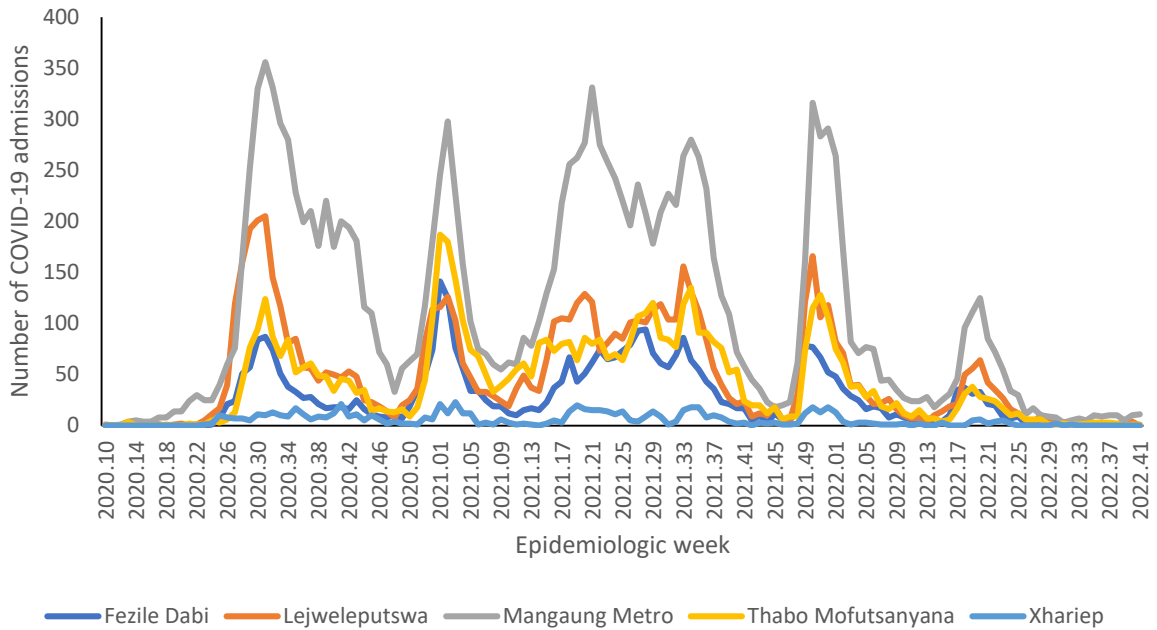


Figure 11: Number of reported COVID-19 admissions, by district and epidemiologic week, Free State, 5 March 2020-15 October 2022, N=32,688

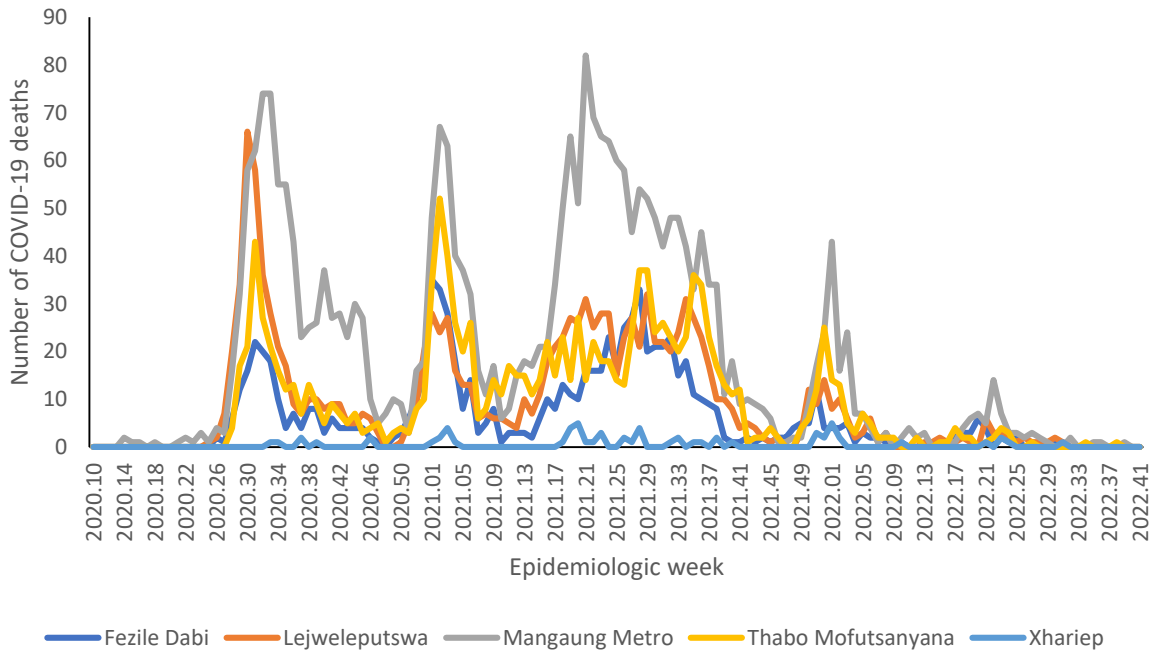


Figure 12: Number of reported COVID-19 in-hospital deaths, by district and epidemiologic week, Free State, 5 March 2020-15 October 2022, N=6,156



Table 6: Previous 14 days and current 14 days average COVID-19 admissions and deaths and percentage changes, Free State, 17 September-15 October 2022.

District	Previous 14 days admissions average	Current 14 days admissions average	Percentage change in admissions	Previous 14 days deaths average	Current 14 days deaths average	Percentage change in deaths
Fezile Dabi	0.36	0.14	-60.00	0.00	0.00	0.00
Lejweleputswa	0.07	0.29	300.00	0.00	0.00	0.00
Mangaung Metro	1.07	1.50	40.00	0.07	0.00	-100.00
Thabo Mofutsanyana	0.14	0.14	0.00	0.07	0.00	-100.00
Xhariep	0.00	0.00	0.00	0.00	0.00	0.00



Gauteng

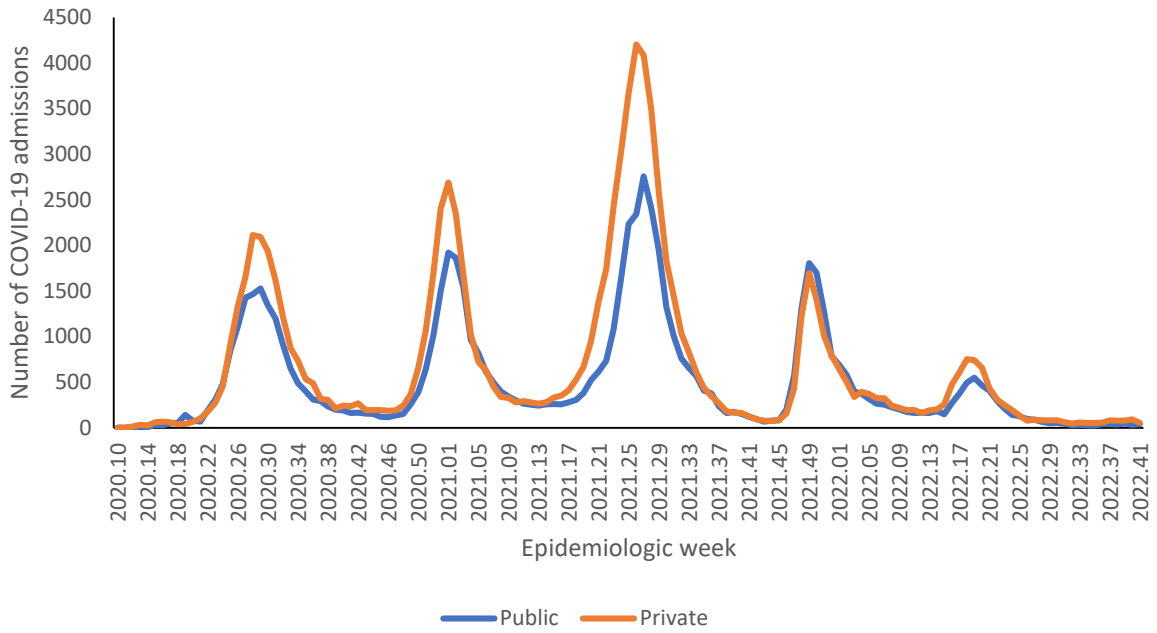


Figure 13: Number of reported COVID-19 admissions by health sector and epidemiologic week of diagnosis, Gauteng, 5 March 2020-15 October 2022, N=160,714

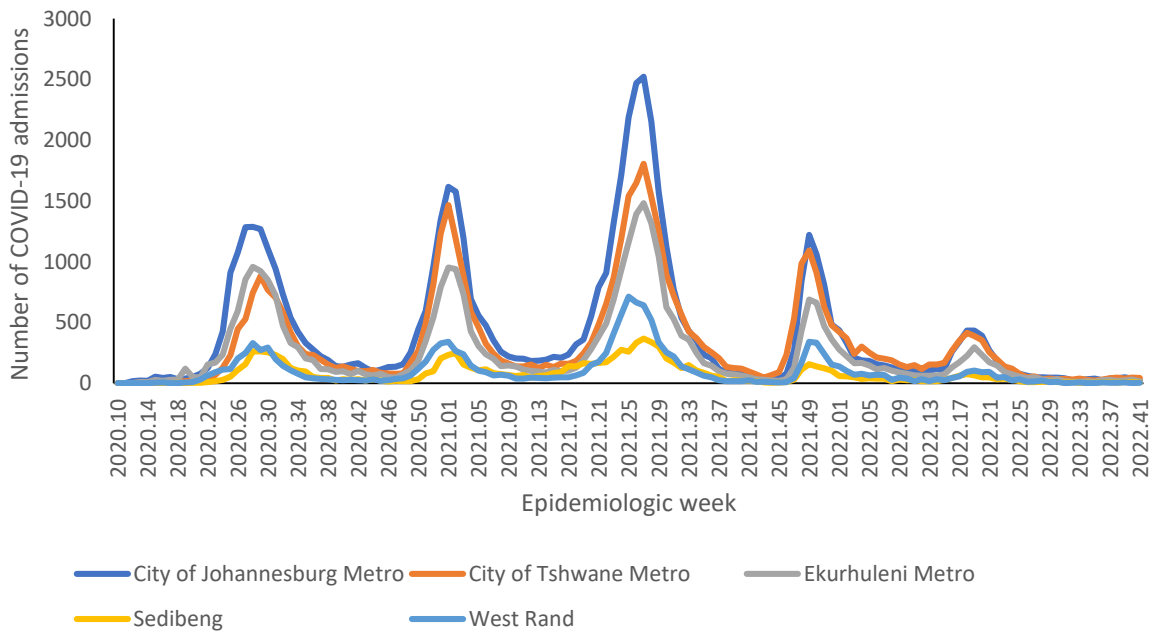


Figure 14: Number of reported COVID-19 admissions, by district and epidemiologic week, Gauteng, 5 March 2020-15 October 2022, N=160,714

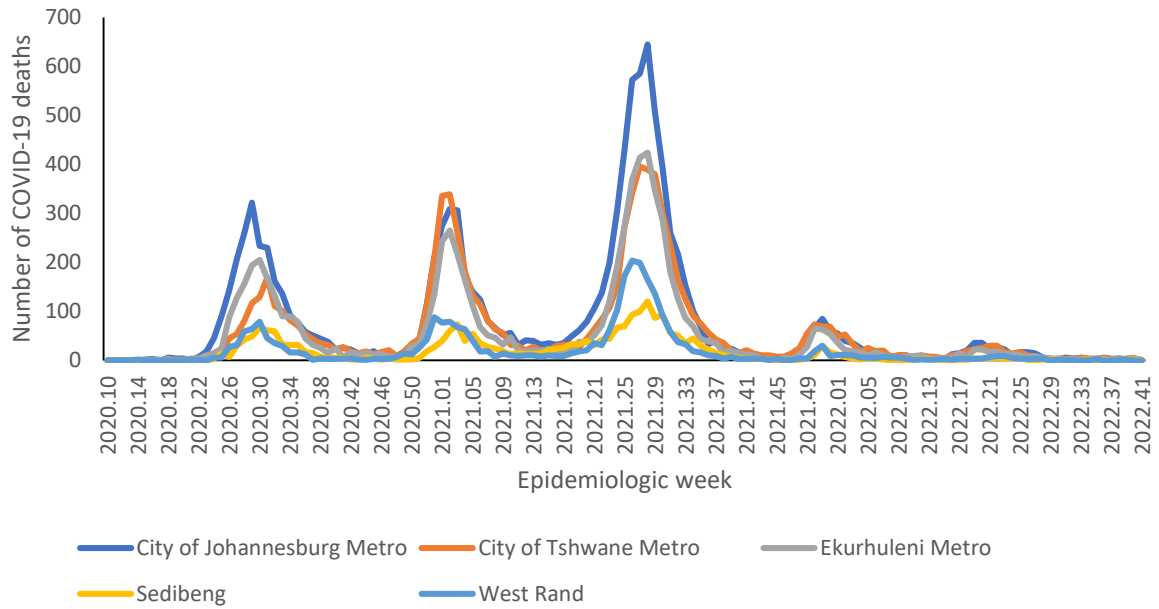


Figure 15: Number of reported COVID-19 in-hospital deaths, by district and epidemiologic week, Gauteng, 5 March 2020-15 October 2022, N=30,692



Table 7: Previous 14 days and current 14 days average COVID-19 admissions and deaths and percentage changes, Gauteng, 17 September-15 October 2022.

District	Previous 14 days admissions average	Current 14 days admissions average	Percentage change in admissions	Previous 14 days deaths average	Current 14 days deaths average	Percentage change in deaths
City of Johannesburg Metro	6.36	4.50	-29.21	0.43	0.29	-33.33
City of Tshwane Metro	6.00	6.43	7.14	0.43	0.36	-16.67
Ekurhuleni Metro	3.00	3.14	4.76	0.43	0.29	-33.33
Sedibeng	1.07	1.07	0.00	0.07	0.21	200.00
West Rand	0.79	0.43	-45.45	0.14	0.00	-100.00



KwaZulu-Natal

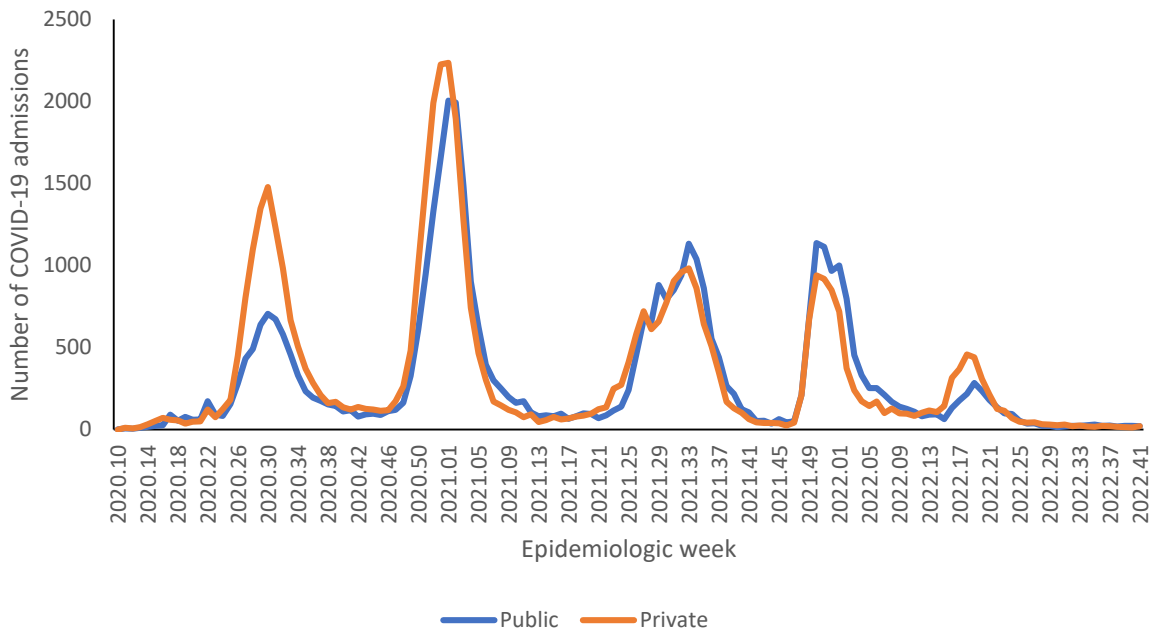


Figure 16: Number of reported COVID-19 admissions by health sector and epidemiologic week of diagnosis, KwaZulu-Natal, 5 March 2020-15 October 2022, N=89,536

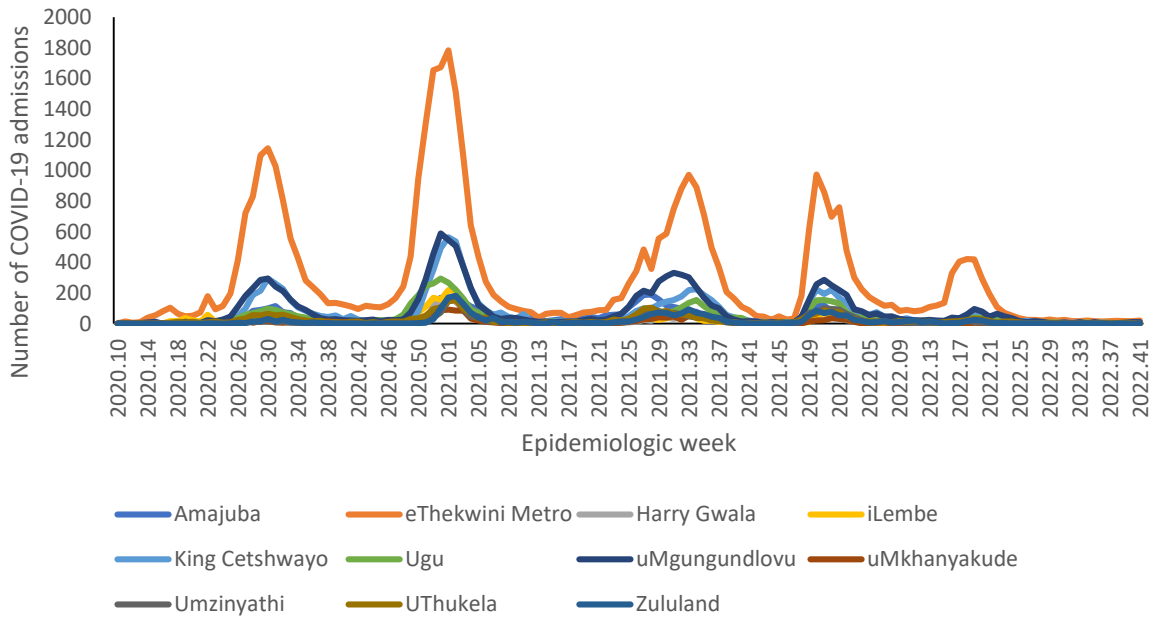


Figure 17: Number of reported COVID-19 admissions, by district and epidemiologic week, KwaZulu-Natal, 5 March 2020-15 October 2022, N=89,536

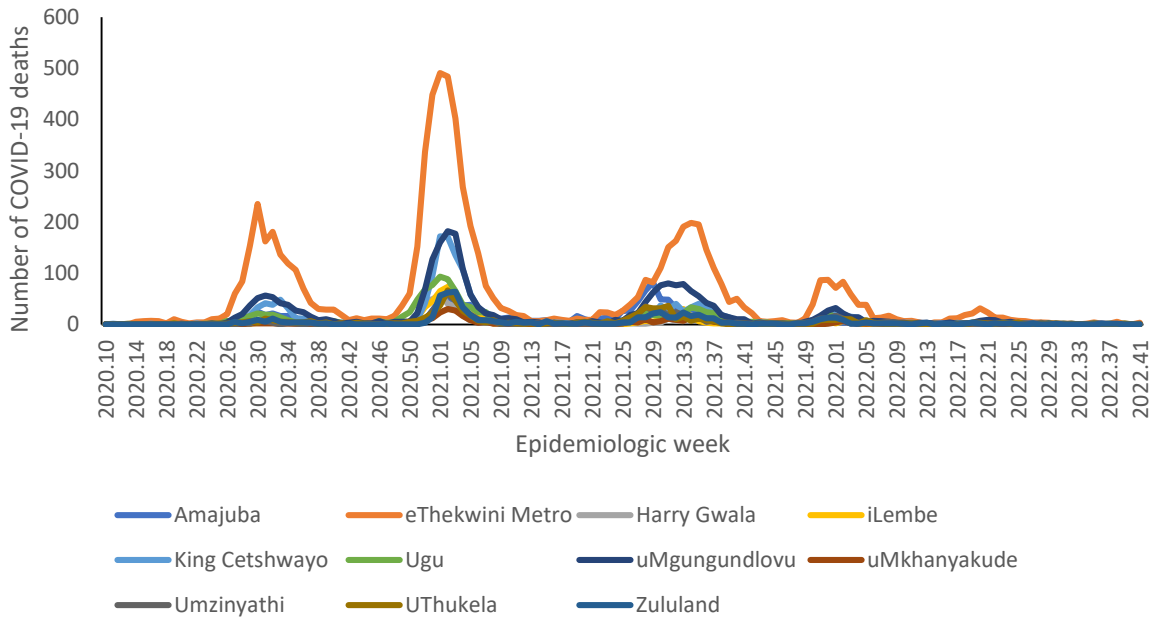


Figure 18: Number of reported COVID-19 in-hospital deaths, by district and epidemiologic week, KwaZulu-Natal, 5 March 2020-15 October 2022, N=17,605



Table 8: Previous 14 days and current 14 days average COVID-19 admissions and deaths and percentage changes, KwaZulu-Natal, 17 September-15 October 2022.

District	Previous 14 days admissions average	Current 14 days admissions average	Percentage change in admissions	Previous 14 days deaths average	Current 14 days deaths average	Percentage change in deaths
Amajuba	0.36	0.21	-40.00	0.00	0.00	0.00
eThekweni Metro	2.43	2.57	5.88	0.36	0.21	-40.00
Harry Gwala	0.21	0.14	-33.33	0.00	0.07	0.00
iLembe	0.00	0.00	0.00	0.00	0.00	0.00
King Cetshwayo	0.57	0.14	-75.00	0.07	0.00	-100.00
Ugu	0.00	0.36	0.00	0.00	0.00	0.00
uMgungundlovu	0.57	1.50	162.50	0.00	0.00	0.00
uMkhanyakude	0.00	0.07	0.00	0.00	0.07	0.00
Umzinyathi	0.00	0.07	0.00	0.00	0.00	0.00
UThukela	1.00	0.21	-78.57	0.14	0.00	-100.00
Zululand	0.14	0.14	0.00	0.07	0.00	-100.00

Limpopo

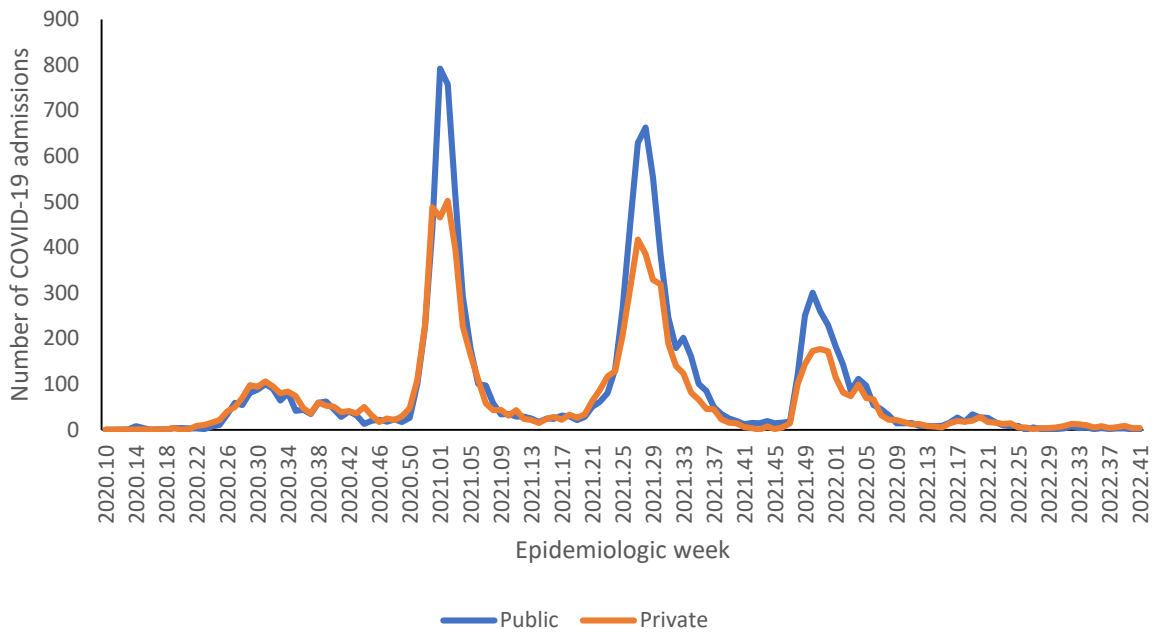


Figure 19: Number of reported COVID-19 admissions by health sector and epidemiologic week of diagnosis, Limpopo, 5 March 2020-15 October 2022, N=21,207

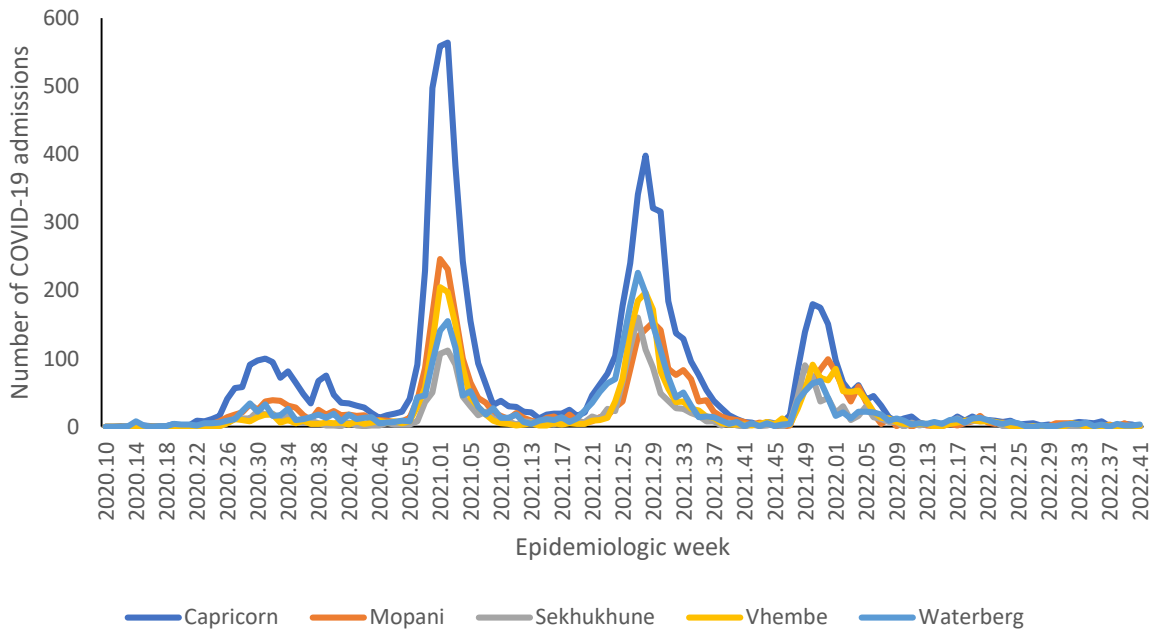


Figure 20: Number of reported COVID-19 admissions, by district and epidemiologic week, Limpopo, 5 March 2020-15 October 2022, N=21,207

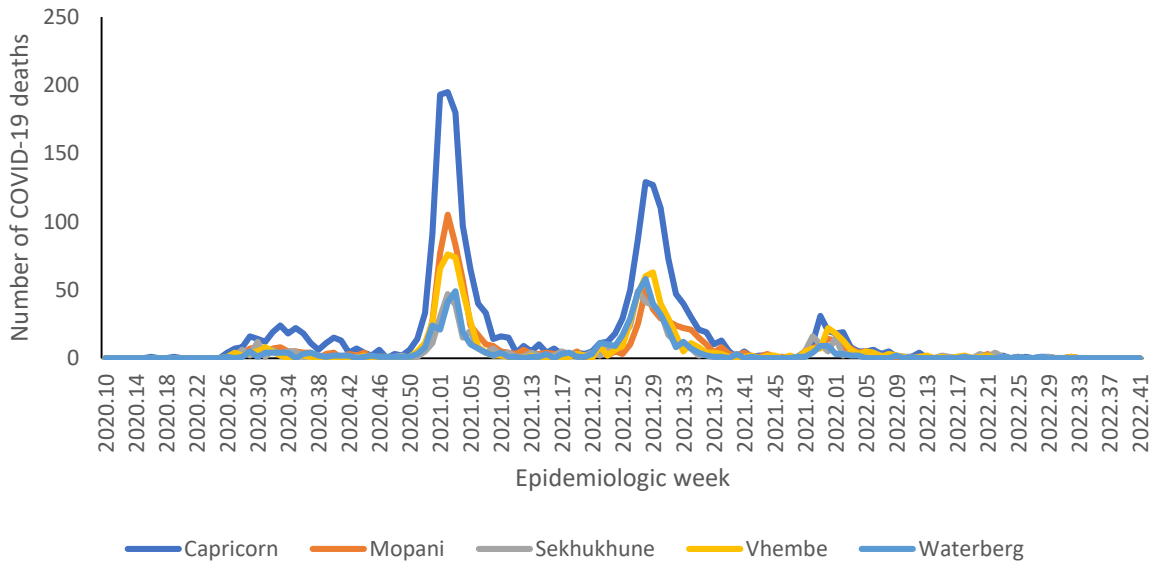


Figure 21: Number of reported COVID-19 in-hospital deaths, by district and epidemiologic week, Limpopo, 5 March 2020-15 October 2022, N=5,336

Table 9: Previous 14 days and current 14 days average COVID-19 admissions and deaths and percentage changes, Limpopo, 17 September-15 October 2022.

District	Previous 14 days admissions average	Current 14 days admissions average	Percentage change in admissions	Previous 14 days deaths average	Current 14 days deaths average	Percentage change in deaths
Capricorn	0.43	0.21	-50.00	0.00	0.00	0.00
Mopani	0.36	0.07	-80.00	0.00	0.00	0.00
Sekhukhune	0.14	0.00	-100.00	0.00	0.00	0.00
Vhembe	0.14	0.07	-50.00	0.00	0.00	0.00
Waterberg	0.43	0.36	-16.67	0.00	0.00	0.00



Mpumalanga

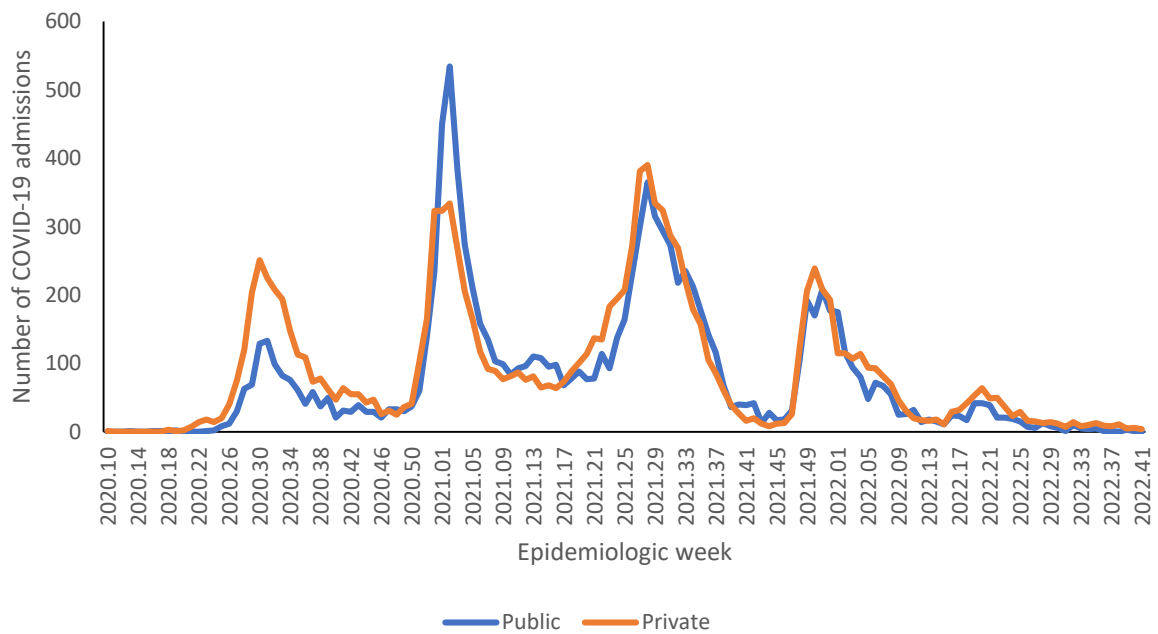


Figure 22: Number of reported COVID-19 admissions by health sector and epidemiologic week of diagnosis, Mpumalanga, 5 March 2020-15 October 2022, N=23,059

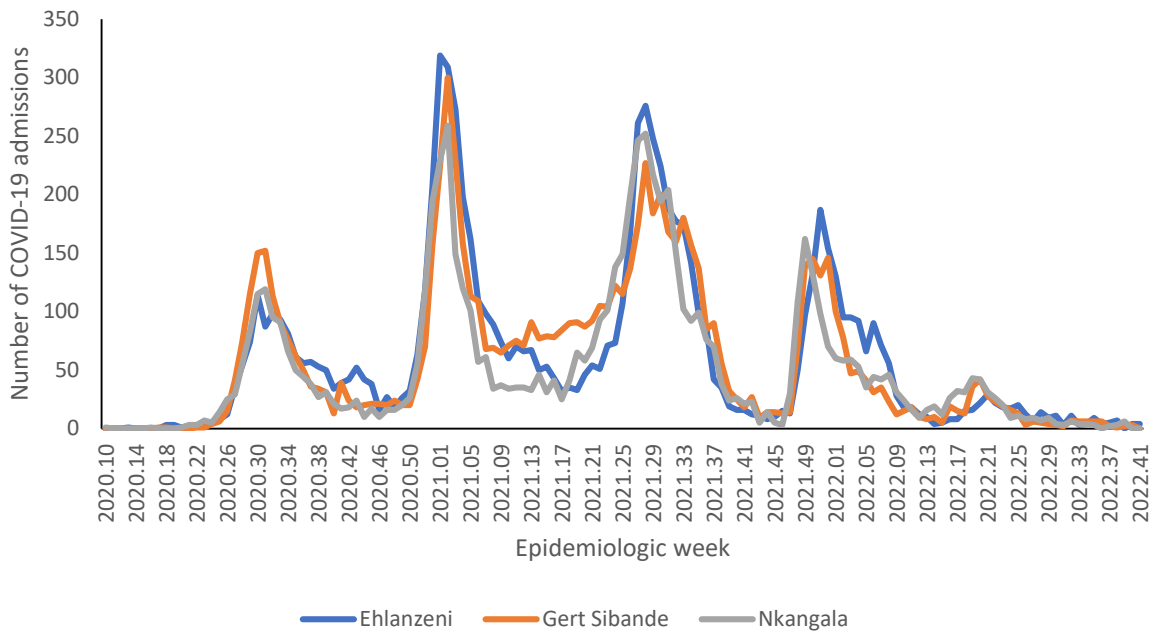


Figure 23: Number of reported COVID-19 admissions, by district and epidemiologic week, Mpumalanga, 5 March 2020-15 October 2022, N=23,059

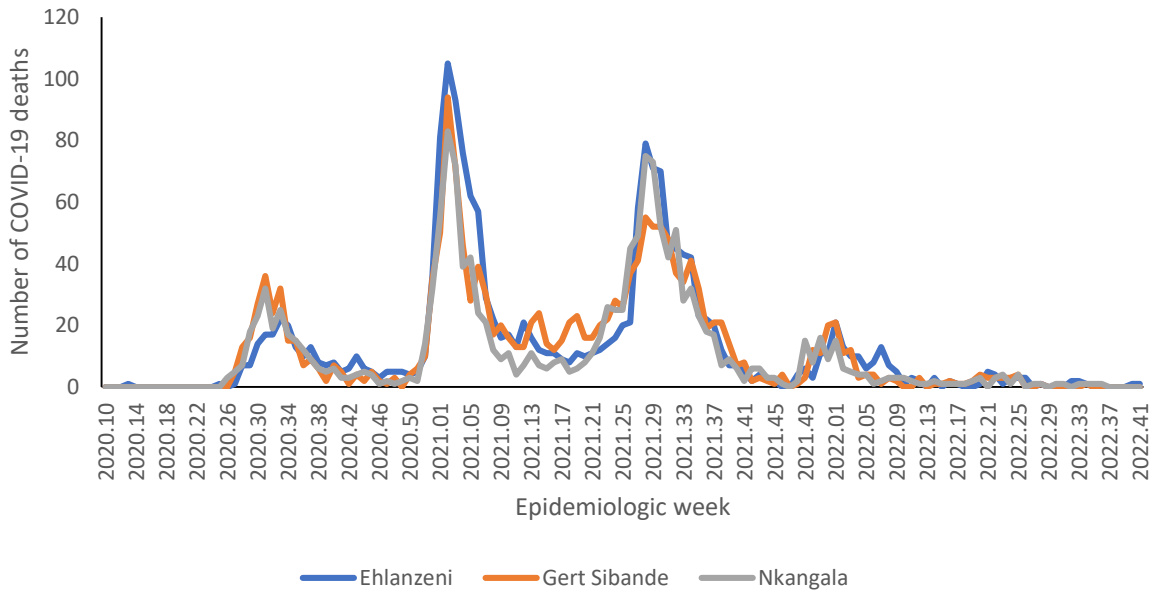


Figure 24: Number of reported COVID-19 in-hospital deaths, by district and epidemiologic week, Mpumalanga, 5 March 2020-15 October 2022, N=4,931



Table 10: Previous 14 days and current 14 days average COVID-19 admissions and deaths and percentage changes, Mpumalanga, 17 September-15 October 2022.

District	Previous 14 days admissions average	Current 14 days admissions average	Percentage change in admissions	Previous 14 days deaths average	Current 14 days deaths average	Percentage change in deaths
Ehlanzeni	0.50	0.57	14.29	0.00	0.14	0.00
Gert Sibande	0.21	0.21	0.00	0.00	0.00	0.00
Nkangala	0.64	0.00	-100.00	0.00	0.00	0.00



North West

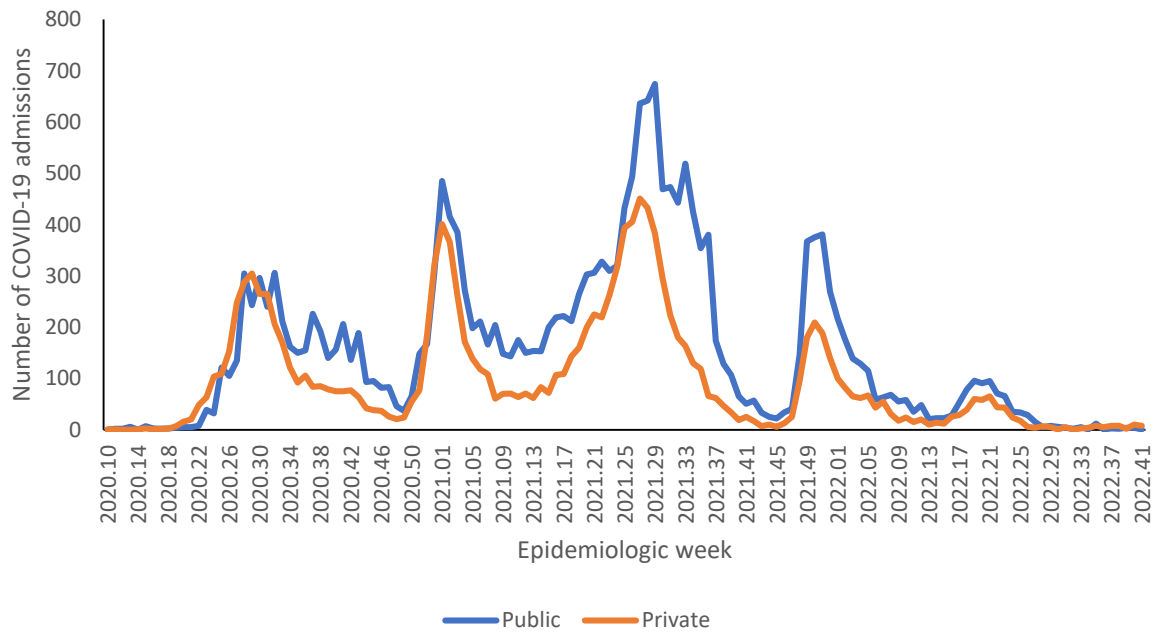


Figure 25: Number of reported COVID-19 admissions by health sector and epidemiologic week of diagnosis, North West, 5 March 2020-15 October 2022, N=34,275

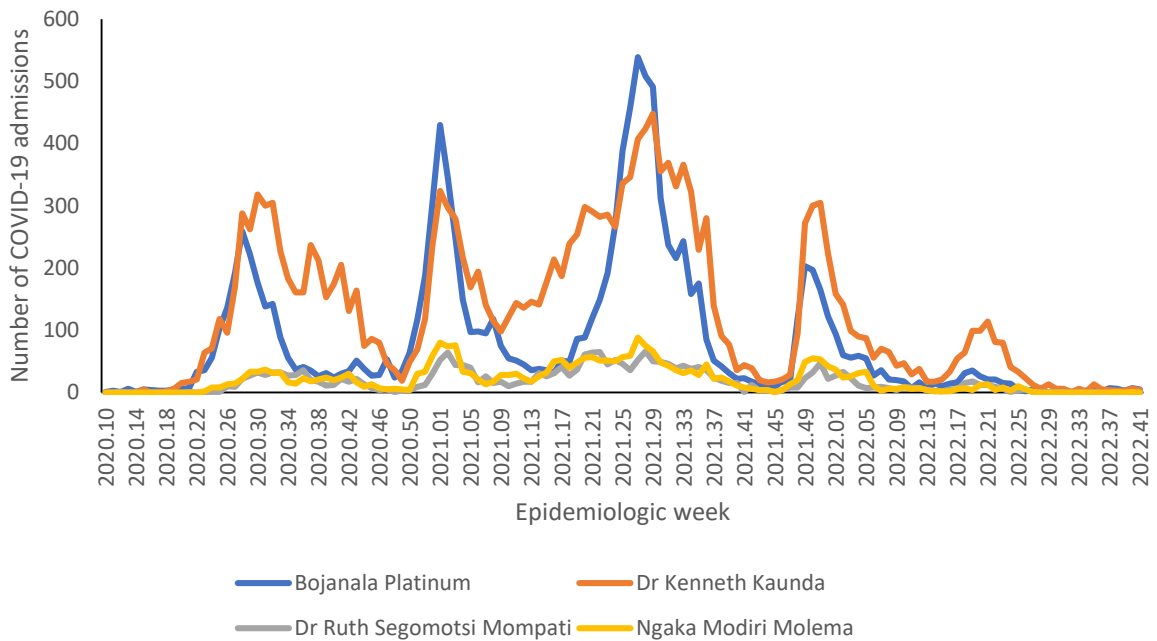


Figure 26: Number of reported COVID-19 admissions, by district and epidemiologic week, North West, 5 March 2020-15 October 2022, N=34,275

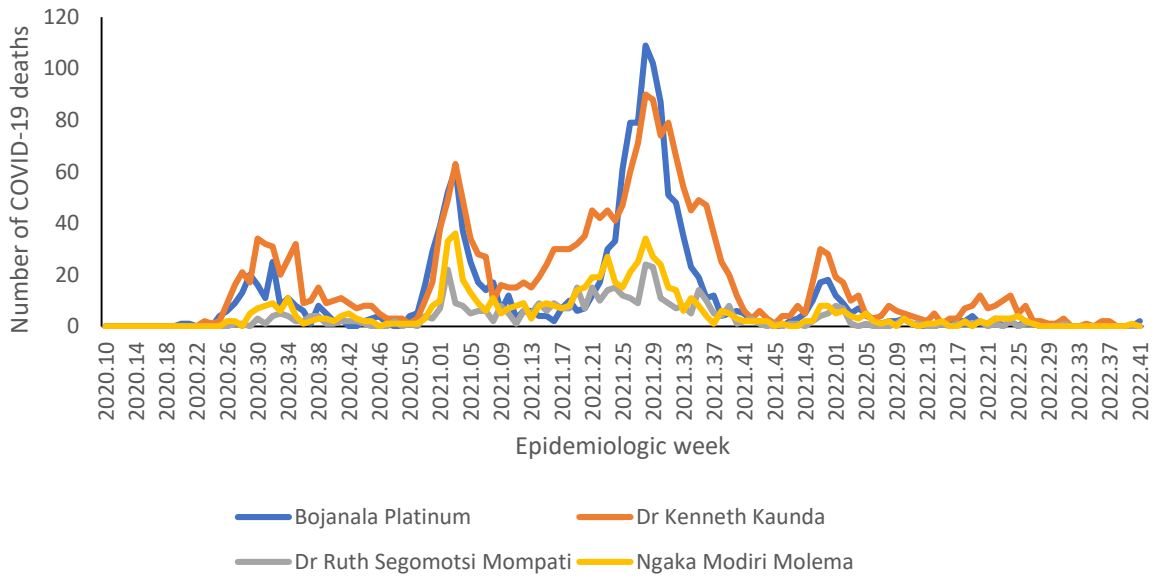


Figure 27: Number of reported COVID-19 in-hospital deaths, by district and epidemiologic week, North West, 5 March 2020-15 October 2022, N=5,019



Table 11: Previous 14 days and current 14 days average COVID-19 admissions and deaths and percentage changes, North West, 17 September-15 October 2022.

District	Previous 14 days admissions average	Current 14 days admissions average	Percentage change in admissions	Previous 14 days deaths average	Current 14 days deaths average	Percentage change in deaths
Bojanala Platinum	0.64	0.86	33.33	0.00	0.14	0.00
Dr Kenneth Kaunda	0.43	0.71	66.67	0.00	0.00	0.00
Dr Ruth Segomotsi Mompati	0.00	0.00	0.00	0.00	0.00	0.00
Ngaka Modiri Molema	0.07	0.07	0.00	0.00	0.07	0.00



Northern Cape

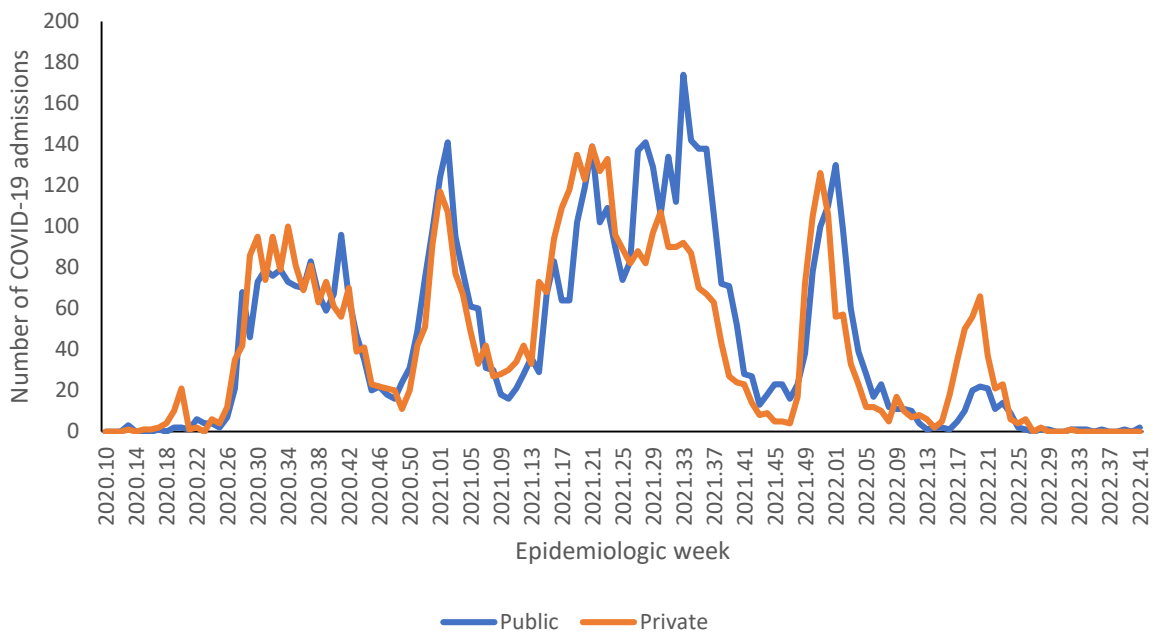


Figure 28: Number of reported COVID-19 admissions by health sector and epidemiologic week of diagnosis, Northern Cape, 5 March 2020-15 October 2022, N=11,923

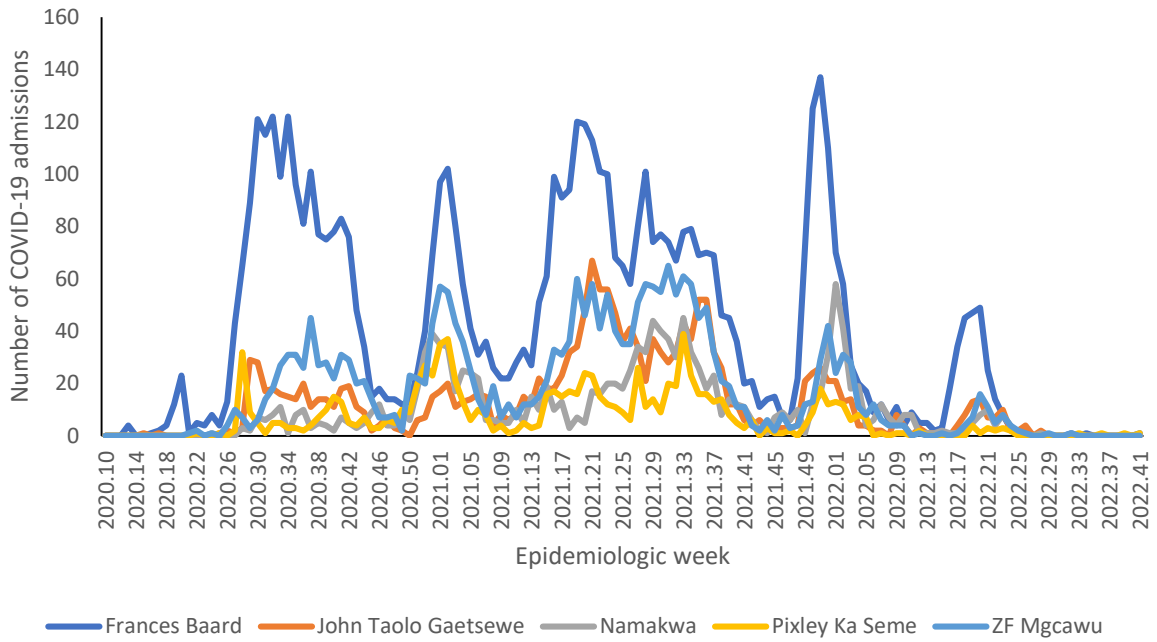


Figure 29: Number of reported COVID-19 admissions by district and epidemiologic week, Northern Cape, 5 March 2020-15 October 2022, N=11,923

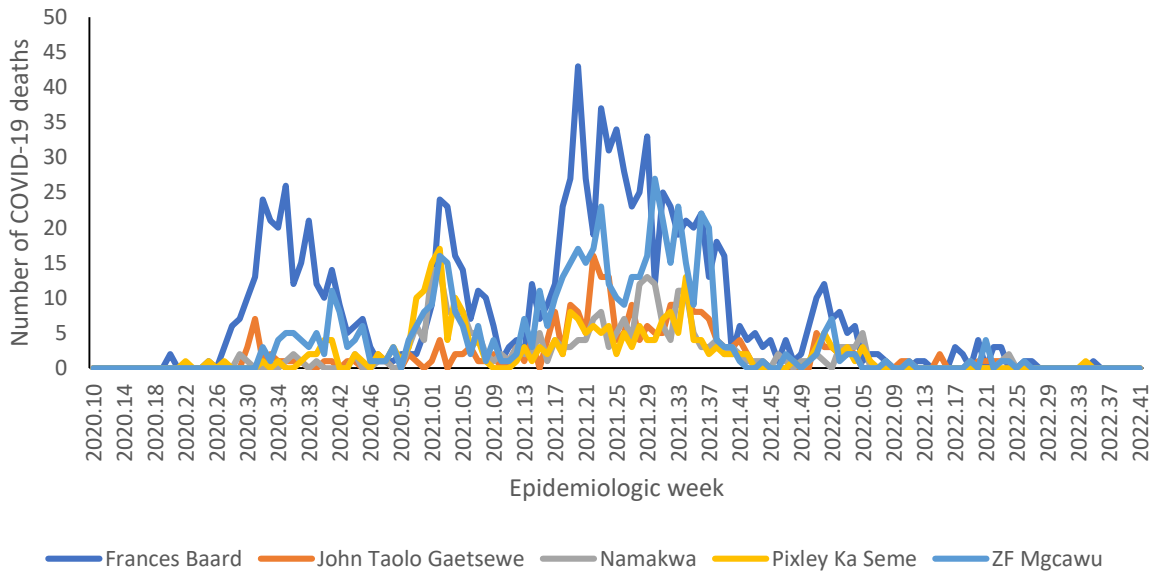


Figure 30: Number of reported COVID-19 in-hospital deaths, by district and epidemiologic week, Northern Cape, 5 March 2020-15 October 2022, N=2,460



Table 12: Previous 14 days and current 14 days average COVID-19 admissions and deaths and percentage changes, Northern Cape, 17 September-15 October 2022.

District	Previous 14 days admissions average	Current 14 days admissions average	Percentage change in admissions	Previous 14 days deaths average	Current 14 days deaths average	Percentage change in deaths
Frances Baard	0.00	0.07	0.00	0.00	0.00	0.00
John Taolo Gaetsewe	0.00	0.00	0.00	0.00	0.00	0.00
Namakwa	0.00	0.00	0.00	0.00	0.00	0.00
Pixley Ka Seme	0.07	0.07	0.00	0.00	0.00	0.00
ZF Mgcawu	0.00	0.00	0.00	0.00	0.00	0.00

Western Cape

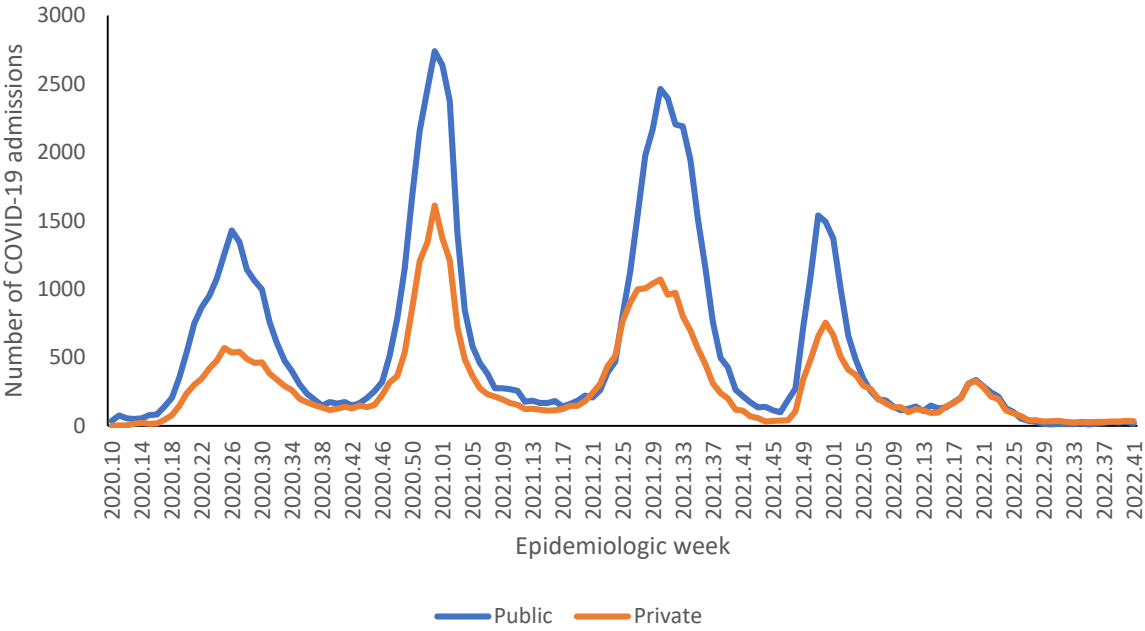


Figure 31: Number of reported COVID-19 admissions by health sector and epidemiologic week of diagnosis, Western Cape, 5 March 2020-15 October 2022, N=121,436

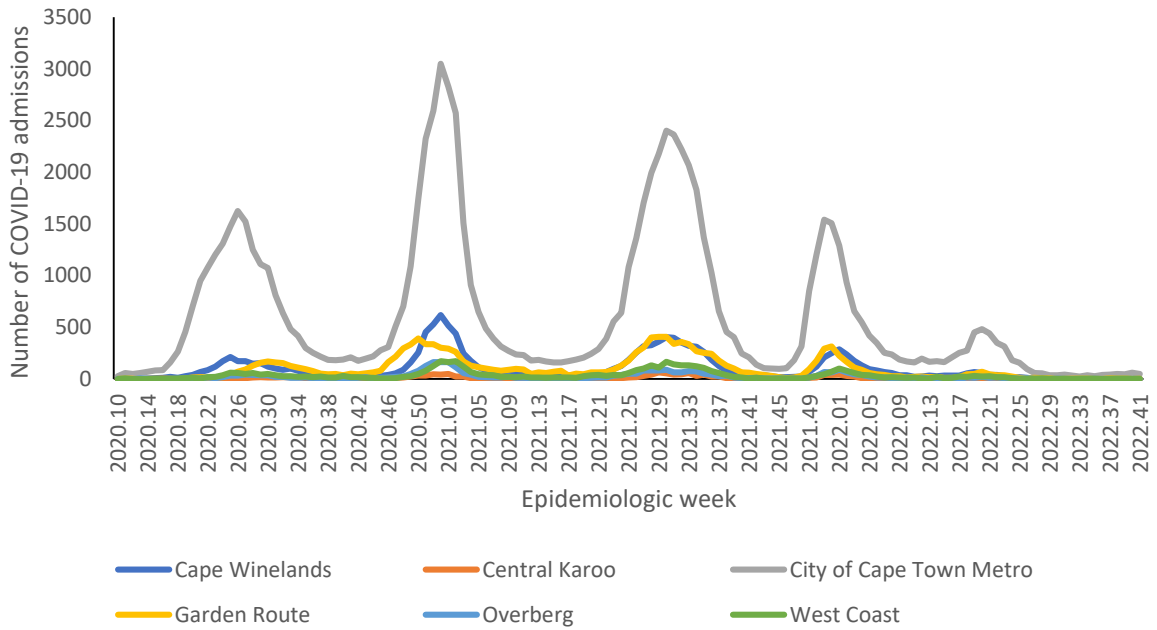


Figure 32: Number of reported COVID-19 admissions, by district and epidemiologic week, Western Cape, 5 March 2020-15 October 2022, N=121,436

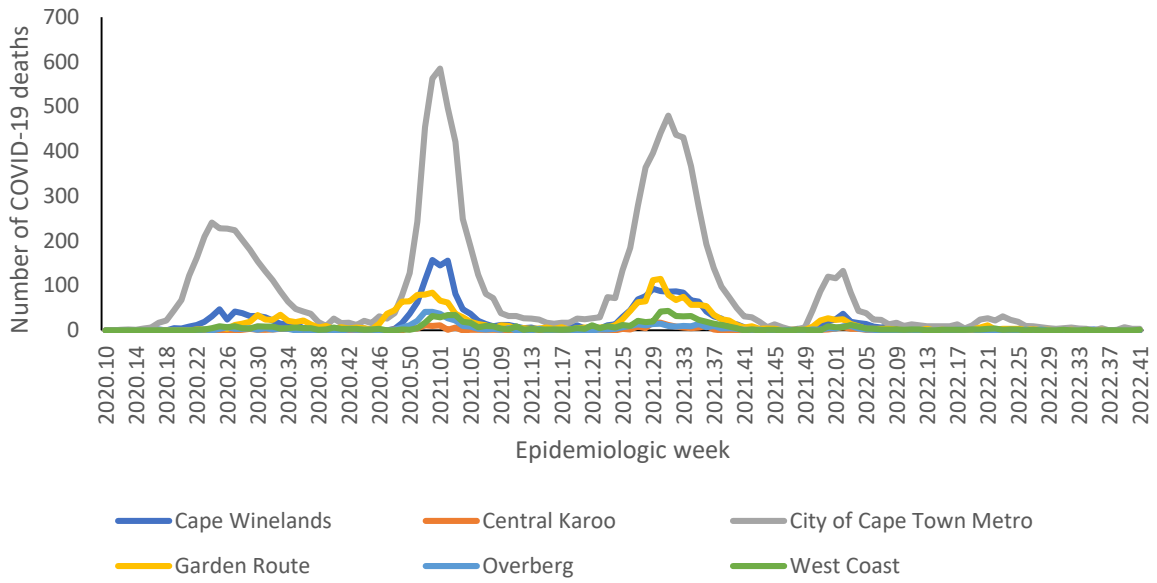


Figure 33: Number of reported COVID-19 in-hospital deaths, by district and epidemiologic week, Western Cape, 5 March 2020-15 October 2022, N=18,927

Table 13: Previous 14 days and current 14 days average COVID-19 admissions and deaths and percentage changes, Western Cape, 17 September-15 October 2022.

District	Previous 14 days admissions average	Current 14 days admissions average	Percentage change in admissions	Previous 14 days deaths average	Current 14 days deaths average	Percentage change in deaths
Cape Winelands	0.36	0.14	-60.00	0.00	0.00	0.00
Central Karoo	0.00	0.00	0.00	0.00	0.00	0.00
City of Cape Town Metro	6.86	7.79	13.54	0.57	0.43	-25.00
Garden Route	0.71	0.07	-90.00	0.00	0.00	0.00
Overberg	0.36	0.00	-100.00	0.00	0.00	0.00
West Coast	0.14	0.21	50.00	0.00	0.07	0.00

Limitation

DATCOV now includes reporting from all hospitals with COVID-19 admissions but many hospitals are yet to reach complete submission of historic data. Data quality in a surveillance system is dependent on the information submitted by healthcare institutions. It is not possible for the NICD to verify or check the quality of all these data, however, the NICD has built-in data quality checks. Delays in reporting of admissions and deaths may affect the numbers reported in the most recent week. The National Department of Health have recruited data capturers to support hospitals to improve data submission.

As hospitals reached capacity, admission criteria may change and therefore influence trends and inferences about the progression of the epidemic. DATCOV only reports hospital-based admissions and deaths and therefore does not include deaths occurring outside hospitals. DATCOV now has a module to record out-of-hospital deaths.

Severity data has some inherent limitations. We rely on a proxy indicator for severity and do not have clinical or laboratory parameters to ascertain clinical severity. In the early and late phases of the wave there is likely to be lower severity due to there being sufficient hospital capacity. It may take a few weeks for hospitalisation outcomes to accumulate. Early reporting on case fatality ratio is also biased particularly in older adults who may have longer admissions and are more likely to die.

Acknowledgements

All public and private sector hospitals submitting data to DATCOV

Private hospital groups submitting data to DATCOV:

- Netcare
- Life Healthcare
- Mediclinic Southern Africa
- National Hospital Network (NHN)
- Clinix Health Group
- Lenmed
- Joint Medical Holdings (JMH)

Appendix

Table 14: Percentage incidence change in hospital admissions over 14 days, by district, South Africa, 1 October 2022-15 October 2022.

Province	District	Total admissions	Incidence (per 100k)	New admissions	New admissions incidence (per 100k)	% average change (14 days)
Eastern Cape	Alfred Nzo	2769	335.83	2	0.24	100.00
	Amathole	3322	424.51	1	0.13	0.00
	Buffalo City Metro	10700	1351.88	3	0.38	200.00
	Chris Hani	5338	749.13	1	0.14	100.00
	Joe Gqabi	1220	355.77	0	0.00	100.00
	Nelson Mandela Bay Metro	17011	1410.06	7	0.58	-58.82
	O R Tambo	5052	329.42	2	0.13	-60.00
	Sarah Baartman	3428	710.37	2	0.41	100.00
Free State	Fezile Dabi	3850	752.61	0	0.00	-100.00
	Lejweleputswa	6769	1036.31	0	0.00	-100.00
	Mangaung Metro	15465	1764.65	11	1.26	0.00
	Thabo Mofutsanyana	5866	767.51	1	0.13	0.00
	Xhariep	738	580.91	0	0.00	100.00
Gauteng	City of Johannesburg Metro	56990	947.75	29	0.48	-25.64
	City of Tshwane Metro	44884	1174.86	43	1.13	-18.87
	Ekurhuleni Metro	34604	855.18	16	0.40	-51.52
	Sedibeng	10281	1055.53	6	0.62	-45.45
	West Rand	13959	1459.52	4	0.42	100.00
KwaZulu-Natal	Amajuba	4749	837.56	4	0.71	300.00
	eThekweni Metro	41248	1028.73	20	0.50	11.11
	Harry Gwala	2821	557.37	1	0.20	-50.00
	iLembe	3077	442.28	0	0.00	100.00
	King Cetshwayo	9822	1029.42	1	0.10	0.00
	Ugu	5966	741.62	2	0.25	-33.33
	uMgungundlovu	11999	1052.62	12	1.05	20.00
	uMkhanyakude	1523	221.37	0	0.00	-100.00
	Umzinyathi	2426	430.07	0	0.00	-100.00
	UThukela	3360	479.74	1	0.14	-50.00
Limpopo	Zululand	2549	288.29	2	0.23	100.00
	Capricorn	8759	660.09	0	0.00	-100.00
	Mopani	3832	318.62	1	0.08	100.00
	Sekhukhune	2148	176.55	0	0.00	100.00
	Vhembe	3091	216.10	1	0.07	100.00



	Waterberg	3377	450.18	3	0.40	50.00
Mpumalanga	Ehlanzeni	8180	447.39	4	0.22	0.00
	Gert Sibande	7850	619.15	0	0.00	-100.00
	Nkangala	7029	426.69	0	0.00	100.00
North West	Bojanala Platinum	11438	587.11	5	0.26	-28.57
	Dr Kenneth Kaunda	17623	2193.82	4	0.50	-33.33
	Dr Ruth Segomotsi Mompati	2392	512.73	0	0.00	100.00
	Ngaka Modiri Molema	2822	311.87	0	0.00	-100.00
Northern Cape	Frances Baard	5600	1346.25	1	0.24	100.00
	John Taolo Gaetsewe	1701	615.51	0	0.00	100.00
	Namakwa	1359	1161.63	0	0.00	100.00
	Pixley Ka Seme	934	443.89	1	0.48	100.00
	ZF Mgcawu	2329	822.06	0	0.00	100.00
Western Cape	Cape Winelands	13646	1427.68	1	0.10	-50.00
	Central Karoo	1408	1857.72	0	0.00	100.00
	City of Cape Town Metro	85062	1817.99	56	1.20	-34.12
	Garden Route	13400	2132.93	1	0.16	100.00
	Overberg	3336	1091.88	0	0.00	100.00
	West Coast	4591	977.86	1	0.21	-75.00

Table 15: Number of reported COVID-19 admissions and in-hospital deaths by age and gender, South Africa, 5 March 2020-15 October 2022.

Age Group (Years)	ADMISSIONS				DEATHS			
	Female	Male	Unknown	Total	Female	Male	Unknown	Total
0-4	7557	9622	54	17233	183	212	4	399
5-9	2099	2779	8	4886	31	37	0	68
10-14	2749	2850	12	5611	69	71	1	141
15-19	7390	4156	6	11552	164	140	0	304
20-24	11396	5768	10	17174	370	280	1	651
25-29	17996	8148	10	26154	782	538	0	1320
30-34	23032	12816	15	35863	1317	1134	2	2453
35-39	23551	16755	21	40327	1878	1782	4	3664
40-44	20753	18446	16	39215	2292	2374	0	4666
45-49	22852	22359	12	45223	3236	3457	1	6694
50-54	26341	24713	10	51064	4406	4586	2	8994
55-59	29229	26699	16	55944	6219	6255	5	12479
60-64	26119	23891	17	50027	6700	6914	6	13620
65-69	22600	20170	19	42789	6954	6521	6	13481
70-74	19438	17167	19	36624	6192	6055	4	12251
75-79	14834	12282	9	27125	4943	4640	3	9586
80-84	11407	8146	8	19561	4062	3193	3	7258
85-89	6292	3944	2	10238	2300	1685	0	3985
90-94	2773	1412	1	4186	1126	665	0	1791
>=95	844	395	3	1242	372	167	0	539
Unknown	897	696	47	1640	48	43	0	91
Total	300149	243214	315	543678	53644	50749	42	104435



**NATIONAL INSTITUTE FOR
COMMUNICABLE DISEASES**

Division of the National Health Laboratory Service