

COVID-19 Hospital Surveillance

Update: Week 46, 2022

Overview of report

This report summarises data of COVID-19 cases admitted to hospital surveillance sites in all provinces. The report is based on data collected from 5 March 2020 to 19 November 2022.

Highlights

- There was a 36% decrease in the number of new admissions in week 46 2022 (256) compared to the number of admissions in week 45 2022 (406). Delays in reporting of admissions and deaths may affect the numbers reported in the most recent week.
- KwaZulu-Natal had the highest number of admissions in the past week (94/256, 36.7%), followed by Gauteng (76/256, 29.6%) and Western Cape (41/256, 16.0%). Northern Cape had the lowest number of admissions (4/256, 1.5%).
- The highest weekly incidence risk of COVID-19 admissions reported in week 46 of 2022 was in the ≥65-year age group (1.8 admissions per 100 000 persons), and the lowest weekly incidence risk was in 20-34-year age group (0.2 admissions per 100 000 persons). An increased incidence risk of COVID-19 admissions has been observed in children <5 years since week 40.

Methods

Data on hospitalisation was accessed from DATCOV, a hospital surveillance system for COVID-19 admissions, initiated on the 1 April 2020. A COVID-19 case was defined as a person with a positive reverse transcriptase polymerase chain reaction (RT-PCR) assay for SARS-CoV-2 or a person who had a positive SARS-CoV-2 antigen test who was admitted to hospital.

Data on SARS-CoV-2 cases diagnosed in public and private laboratories submitted to the NICD were reported from the line list on the NMCSS.

Case fatality ratio (CFR) was calculated for all closed cases, i.e., COVID-19 deaths divided by COVID-19 deaths plus COVID-19 discharges, excluding individuals who are still admitted in hospital. For the calculation of cumulative incidence risks, StatsSA mid-year population estimates for 2021 were utilised. For comparisons of change in admission, we used 14-day daily average admissions in the current 14-day period compared to the previous 14-day period.

Severity was defined as patients receiving oxygen or invasive ventilation, treated in high care or intensive care wards, developing acute respiratory distress syndrome, or died. While oxygen, ventilation, and ward of stay variables are updated daily for all admissions in the private sector, there may be delays with the data being updated in the public sector. Also, as patients remain in hospital their condition may change, and percentage of severity may change over time.

Data are submitted by public and private hospitals that have agreed to report COVID-19 admissions through DATCOV surveillance in all nine provinces of South Africa. On 15 July 2020, the National Health Council decided that all hospitals should report to DATCOV. As of 19 November 2022, a total of 667 facilities submitted data on hospitalised COVID-19 cases, 406 from public sector and 262 from private sector (Table 1). This reflects 100% coverage of all public and private hospitals that have had COVID-19 admissions. As new hospitals join the surveillance system, they have retrospectively captured all admissions recorded although there may be some backlogs in retrospective data capture.

Table 1: Number of hospitals reporting data on COVID-19 admissions by province and sector, South Africa, 5 March 2020-19 November 2022.

Facilities reporting	Public	Private
Eastern Cape	86	18
Free State	34	20
Gauteng	39	99
KwaZulu-Natal	71	47
Limpopo	41	7
Mpumalanga	31	9
North West	17	13
Northern Cape	29	6
Western Cape	59	43
South Africa	406	262

Results

Epidemiological and demographic trends in admissions

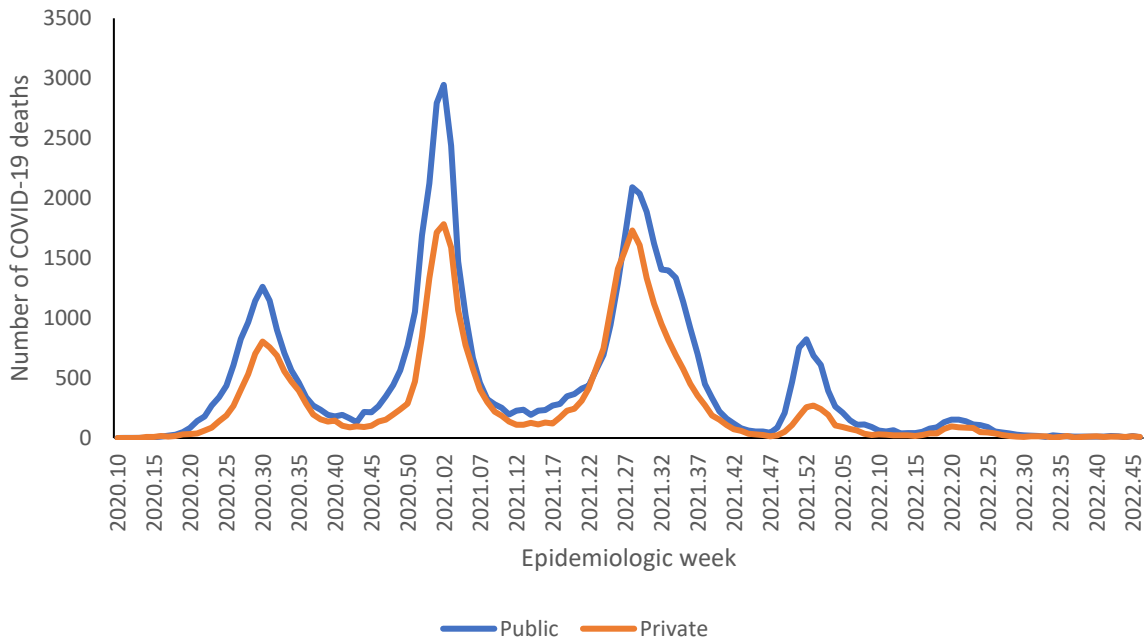


Figure 1: Number of reported COVID-19 admissions by health sector and epidemiologic week of diagnosis, South Africa, 5 March 2020-19 November 2022, N=545,110

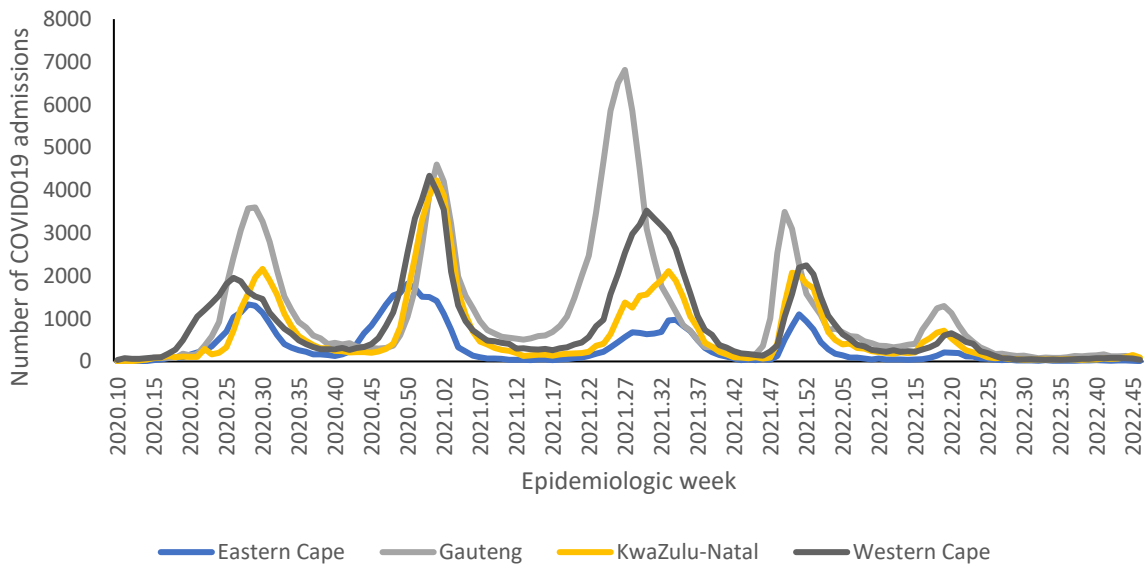


Figure 2a: Number of reported COVID-19 admissions, by provinces with highest admissions and epidemiologic week of diagnosis, South Africa, 5 March 2020-19 November 2022, N=545,110

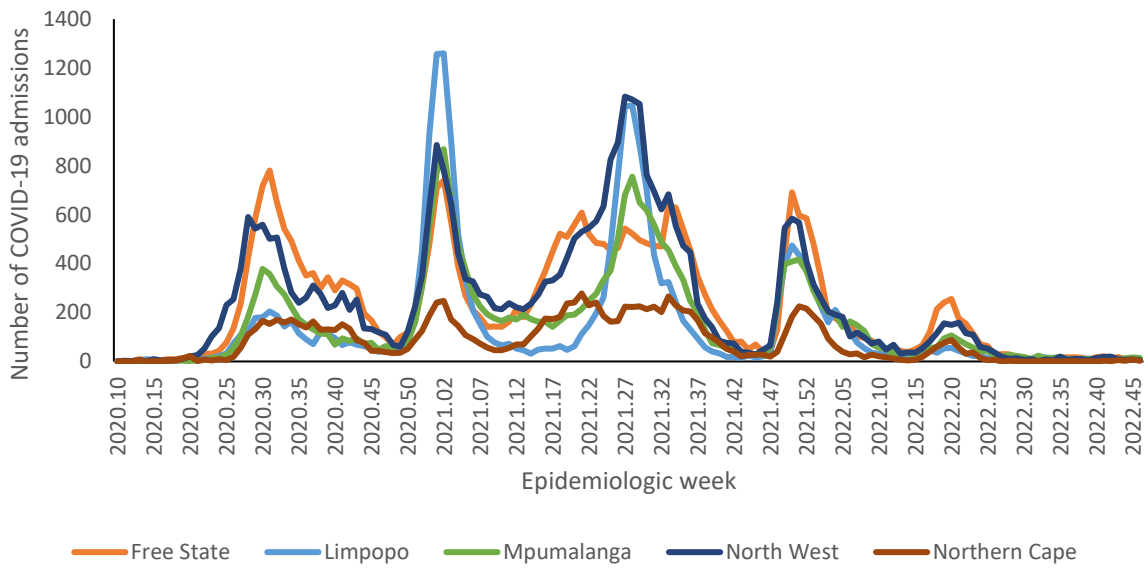


Figure 2b: Number of reported COVID-19 admissions, by provinces with lowest admissions and epidemiologic week of diagnosis, South Africa, 5 March 2020-19 November 2022, N=545,110

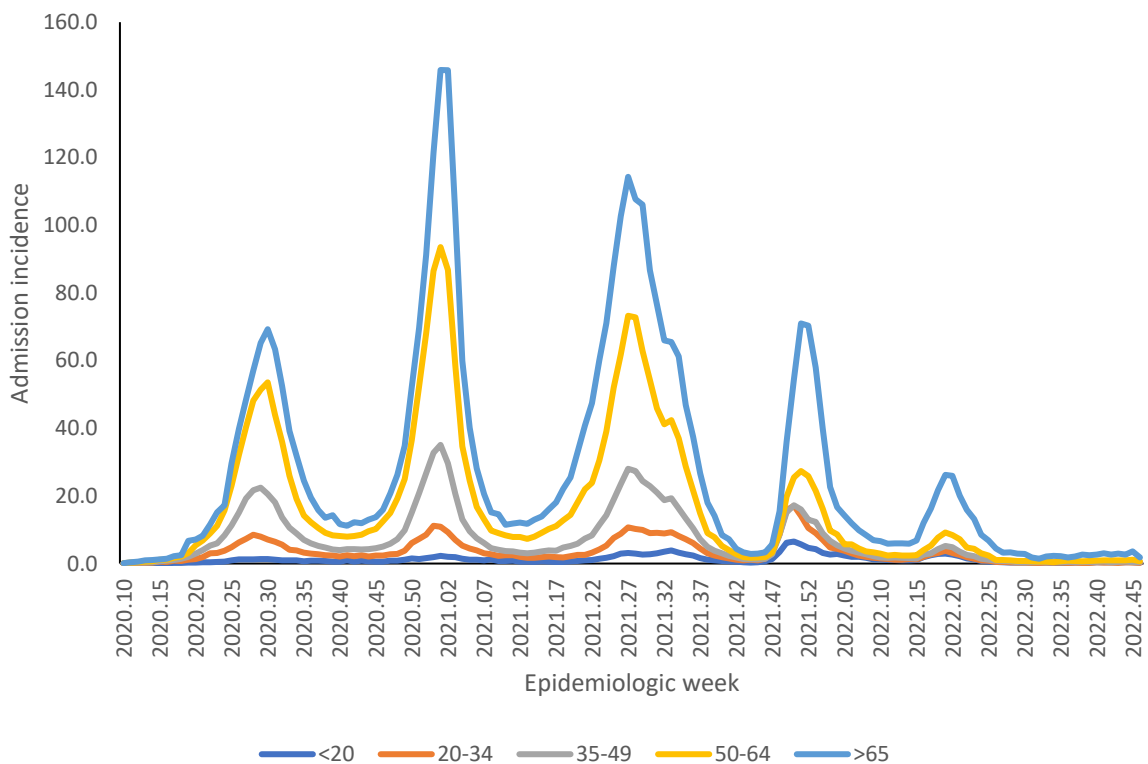


Figure 3: Incidence risk of COVID-19 admissions per 100,000 persons, by age group and epidemiologic week of diagnosis, South Africa, 5 March 2020-19 November 2022, N=545,110

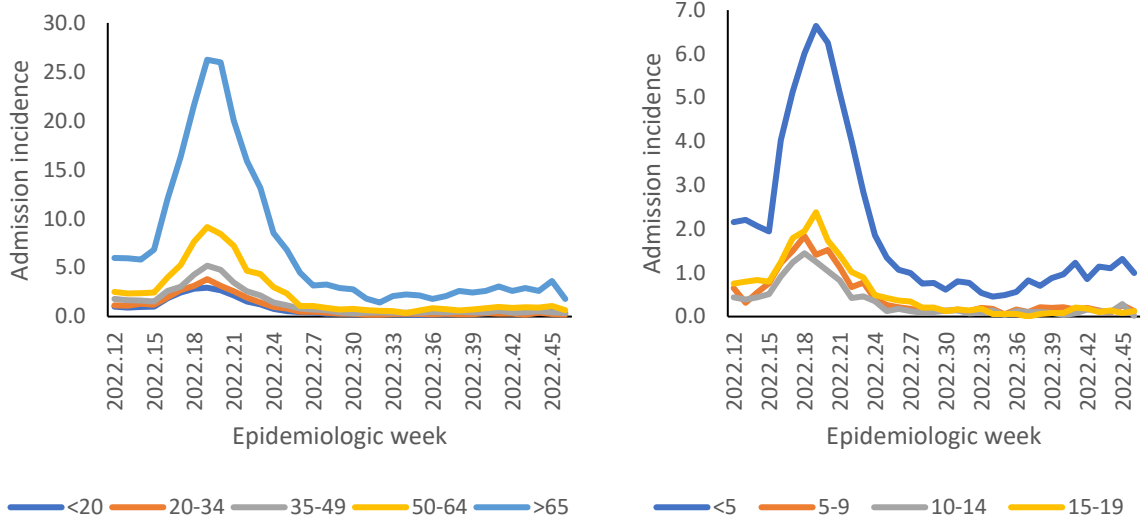


Figure 4: Incidence risk of COVID-19 admissions per 100,000 persons, by age group and epidemiologic week of diagnosis, South Africa, 19 March 2022-19 November 2022

Epidemiological and demographic trends in in-hospital mortality

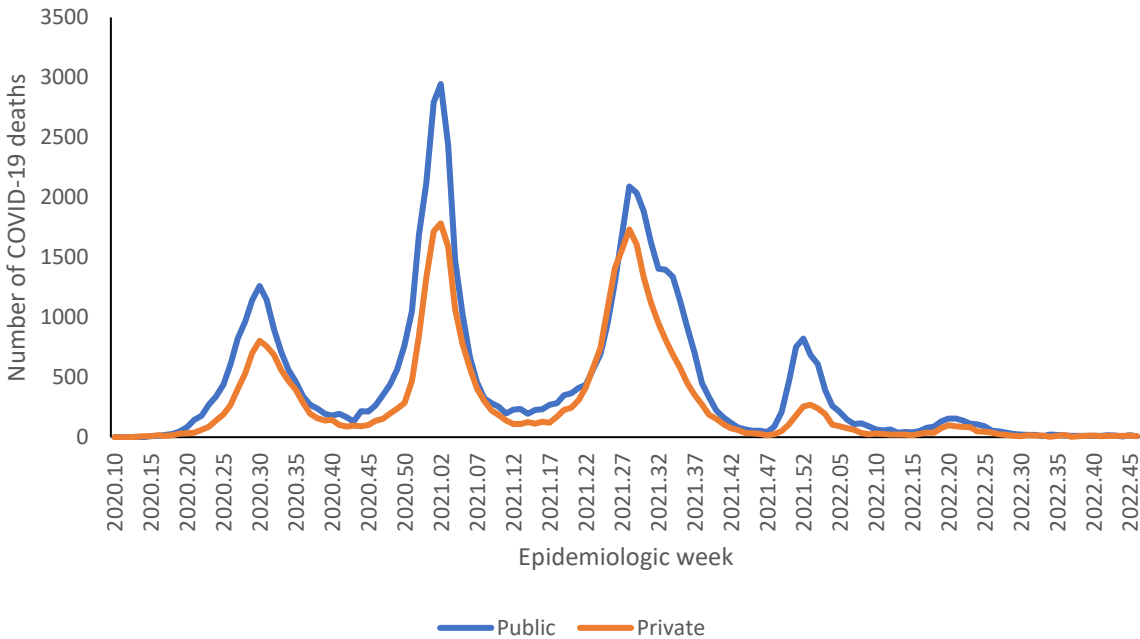


Figure 5: Number of reported COVID-19 in-hospital deaths, by health sector and epidemiologic week, South Africa, 5 March 2020-19 November 2022, N=104,509

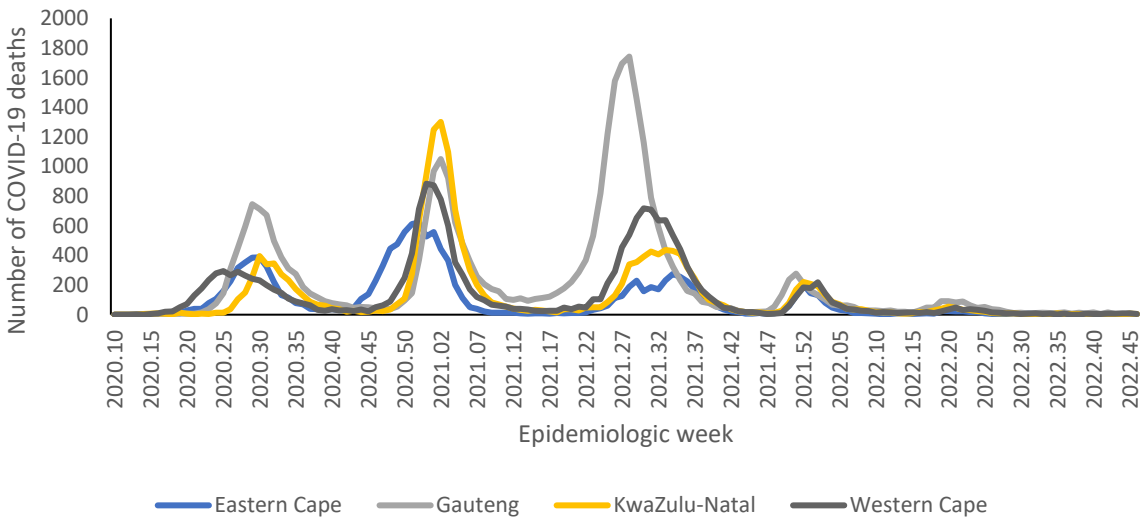


Figure 6a: Number of reported COVID-19 in-hospital deaths, by province with highest deaths and epidemiologic week of death, South Africa, 5 March 2020-19 November 2022, N=104,509

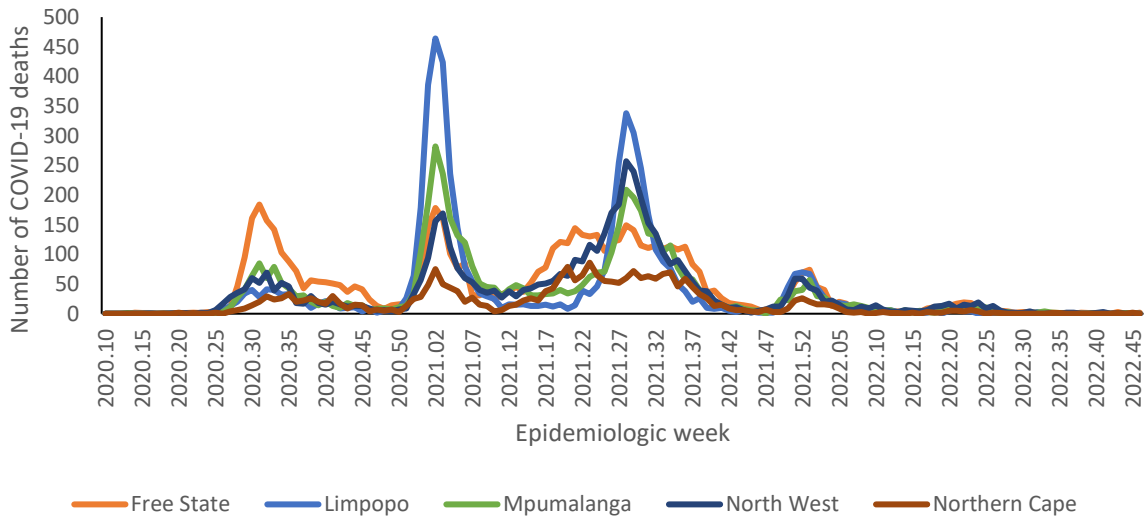


Figure 6b: Number of reported COVID-19 in-hospital deaths, by province with lowest deaths and epidemiologic week of death, South Africa, 5 March 2020-19 November 2022, N=104,509

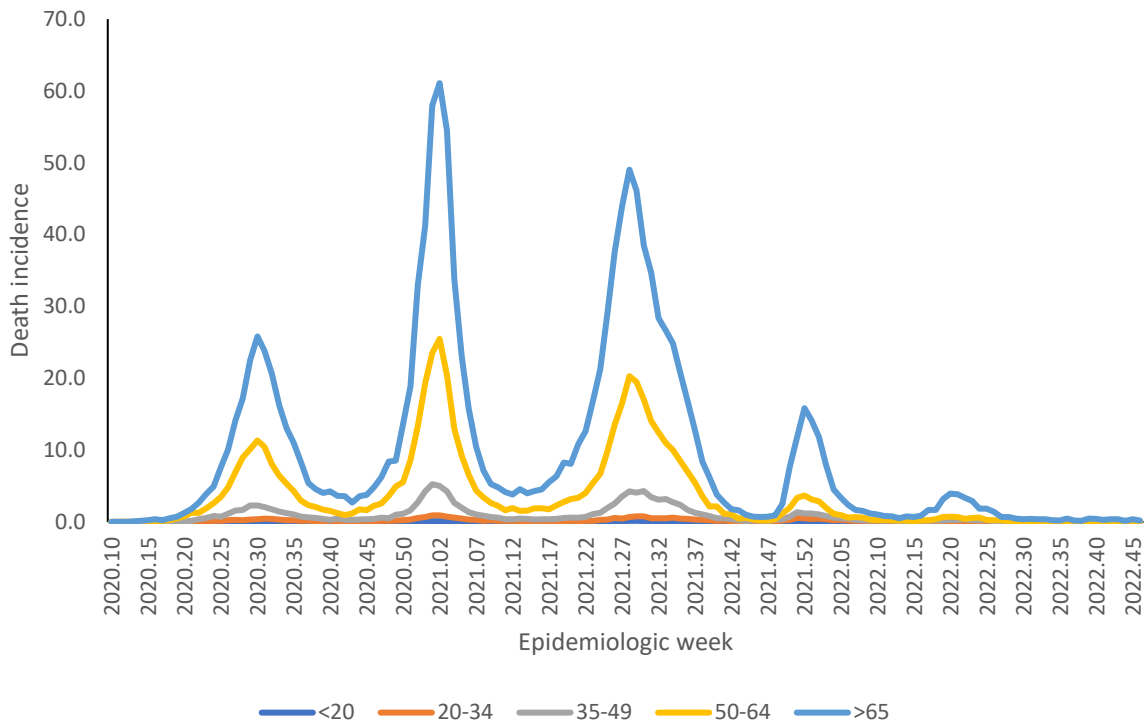


Figure 7: Incidence risk of COVID-19 in-hospital deaths per 100,000 persons, by age group and epidemiologic week of death, South Africa, 5 March 2020-19 November 2022, N=104,509

Provincial trends

Table 2: Number and cumulative incidence risk of COVID-19 hospitalisations and in-hospital deaths per 100,000 persons by province, South Africa, 5 March 2020-19 November 2022.

Province	Provincial Population mid 2020*	Cumulative admissions	Cumulative incidence risk of admissions / 100,000	Cumulative deaths	Cumulative incidence risk of deaths / 100,000
Eastern Cape	6676590	48922	732.7	13320	199.5
Free State	2932441	32754	1117.0	6158	210.0
Gauteng	15810388	161 310	1020.3	30710	194.2
KwaZulu-Natal	11513575	89974	781.5	17632	153.1
Limpopo	5926724	21243	358.4	5331	89.9
Mpumalanga	4743584	23124	487.5	4930	103.9
North West	4122854	34 291	831.7	5017	121.7
Northern Cape	1303047	11 933	915.8	2461	188.9
Western Cape	7113776	121 559	1708.8	18950	266.4
South Africa	60142978	545 110	906.4	104 509	173.8

*StatsSA mid-year population estimates 2020

Table 3: Previous 14 days and current 14 days daily average COVID-19 admissions and deaths and percentage changes, South Africa, 22 October-19 November 2022.

Province	Hospital admissions		Percentage change in admissions	Hospital deaths		Percentage change in deaths
	Previous 14 days average admissions	Current 14 days average admissions		Previous 14 days average deaths	Current 14 days average deaths	
Eastern Cape	3.29	2.00	-39.13	0.43	0.57	33.33
Free State	1.79	1.71	-4.00	0.21	0.14	-33.33
Gauteng	17.57	13.07	-25.61	0.57	0.64	12.50
KwaZulu-Natal	11.43	17.36	51.88	0.43	0.79	83.33
Limpopo	1.21	1.14	-5.88	0.00	0.00	0.00
Mpumalanga	1.50	2.14	42.86	0.07	0.00	-100.00
North West	1.21	1.00	-17.65	0.07	0.00	-100.00
Northern Cape	0.57	0.79	37.50	0.07	0.14	100.00
Western Cape	11.71	8.00	-31.71	1.00	0.93	-7.14

* Reporting of new admissions in the most recent week may be delayed

Table 4: Previous 7 days and current 7 days daily average COVID-19 admissions and deaths and percentage changes, South Africa, 5 November-19 November 2022.

Province	Hospital admissions		Percentage change in admissions	Hospital deaths		Percentage change in deaths
	Previous 7 days average admissions	Current 7 days average admissions		Previous 7 days average deaths	Current 7 days average deaths	
Eastern Cape	2.43	1.57	-35.29	0.86	0.29	-66.67
Free State	2.14	1.29	-40.00	0.00	0.29	0.00
Gauteng	15.43	10.71	-30.56	0.86	0.43	-50.00
KwaZulu-Natal	21.29	13.43	-36.91	0.86	0.71	-16.67
Limpopo	1.71	0.57	-66.67	0.00	0.00	0.00
Mpumalanga	2.29	2.00	-12.50	0.00	0.00	0.00
North West	1.14	0.86	-25.00	0.00	0.00	0.00
Northern Cape	1.14	0.43	-62.50	0.29	0.00	-100.00
Western Cape	10.14	5.86	-42.25	1.29	0.57	-55.56

* Reporting of new admissions in the most recent week may be delayed



Eastern Cape

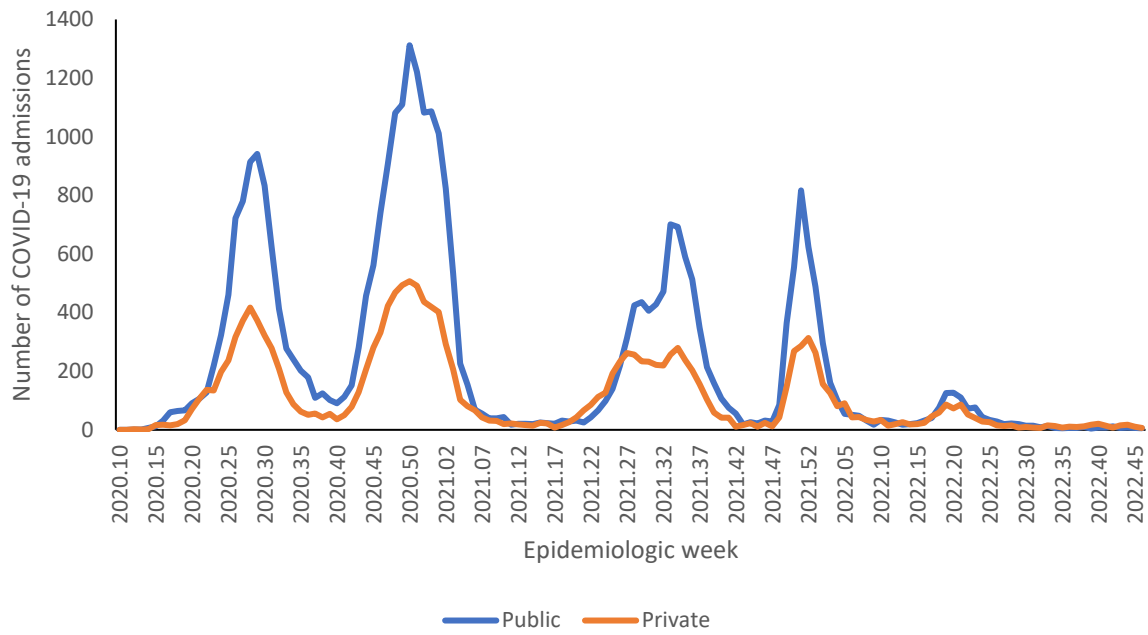


Figure 8: Number of reported COVID-19 admissions by health sector and epidemiologic week of diagnosis, Eastern Cape, 5 March 2020-19 November 2022, N=48,922

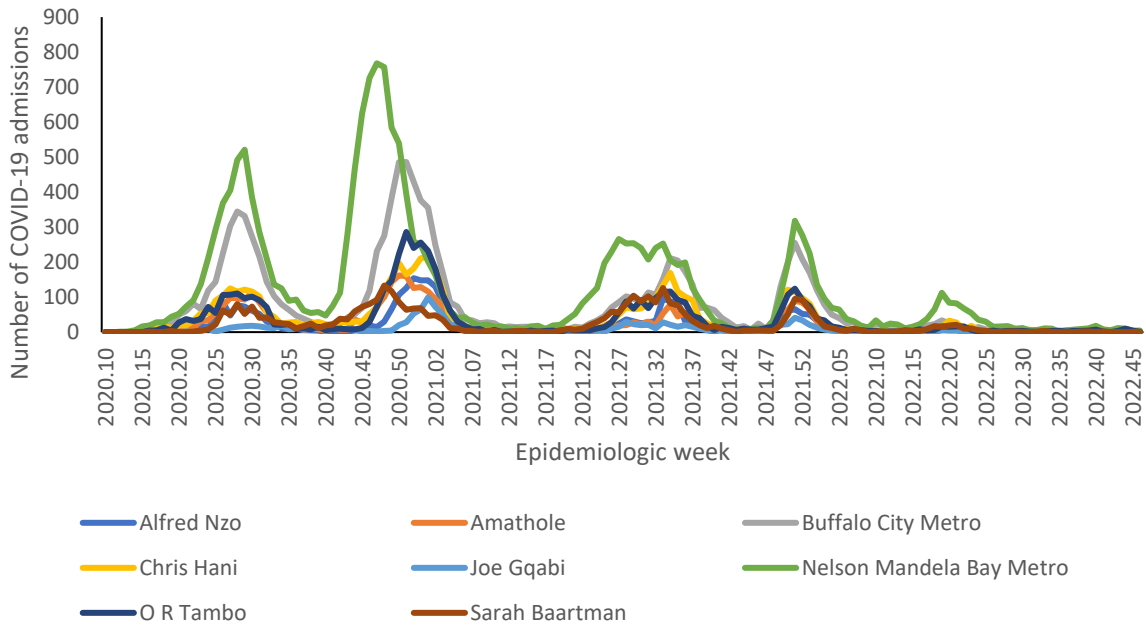


Figure 9: Number of reported COVID-19 admissions, by district and epidemiologic week, Eastern Cape, 5 March 2020-19 November 2022, N=48,922

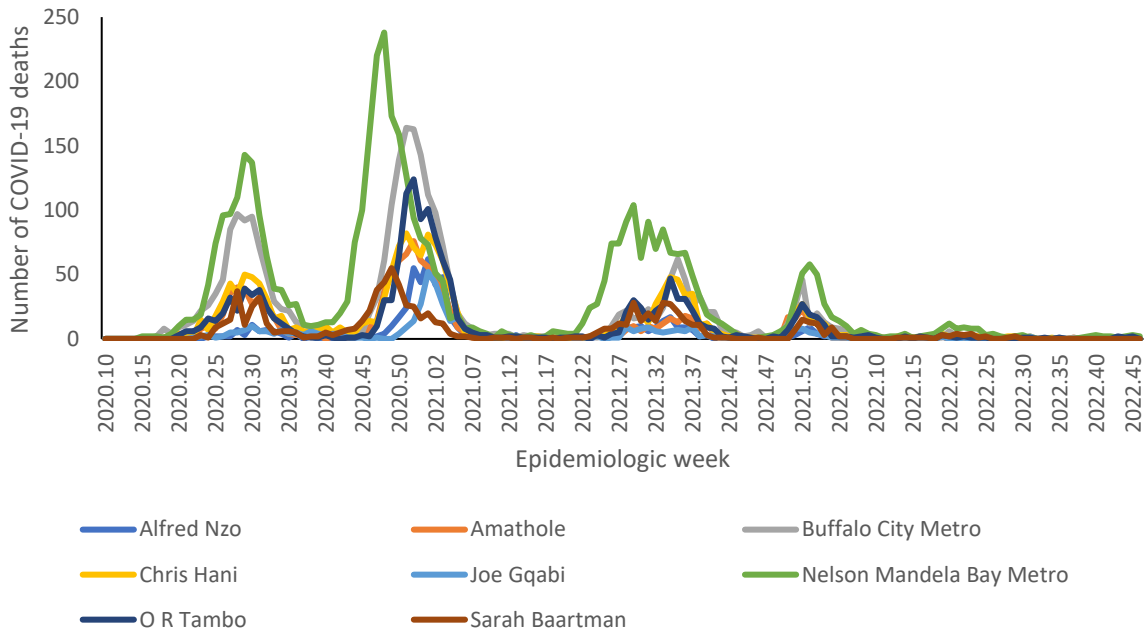


Figure 10: Number of reported COVID-19 in-hospital deaths, by district and epidemiologic week, Eastern Cape, 5 March 2020-19 November 2022, N=13,320

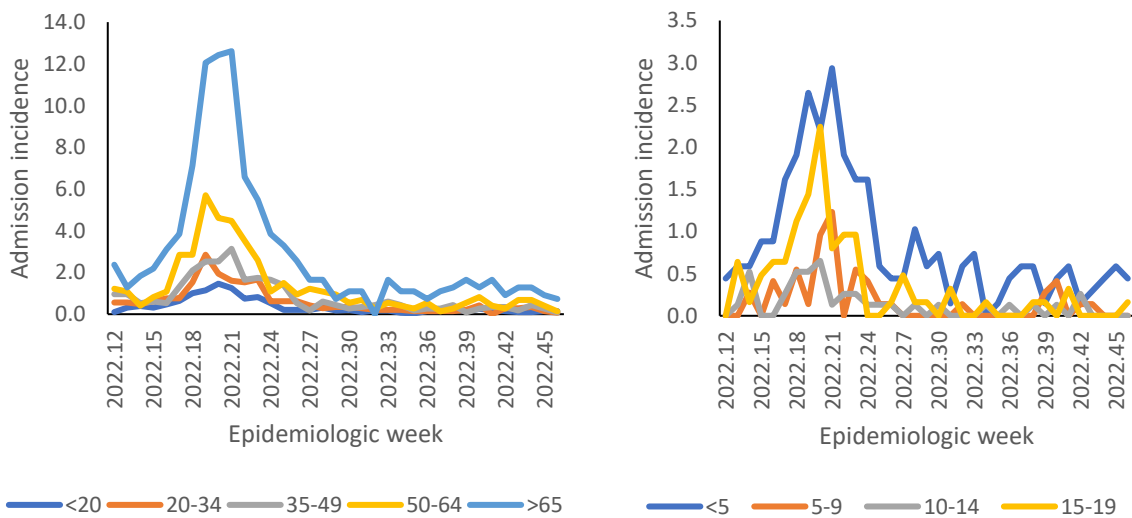


Figure 11: Incidence risk of COVID-19 admissions per 100,000 persons by age group and epidemiologic week of diagnosis, Eastern Cape, 19 March 2022-19 November 2022

Table 5: Previous 14 days and current 14 days average COVID-19 admissions and deaths and percentage changes, Eastern Cape, 22 October-19 November 2022.

District	Previous 14 days admissions average	Current 14 days admissions average	Percentage change in admissions	Previous 14 days deaths average	Current 14 days deaths average	Percentage change in deaths
Alfred Nzo	0.21	0.29	33.33	0.00	0.00	0.00
Amathole	0.00	0.07	0.00	0.00	0.00	0.00
Buffalo City Metro	0.14	0.29	100.00	0.00	0.00	0.00
Chris Hani	0.43	0.07	-83.33	0.00	0.07	0.00
Joe Gqabi	0.00	0.21	0.00	0.00	0.00	0.00
Nelson Mandela Bay	1.57	0.57	-63.64	0.21	0.36	66.67
O R Tambo	0.93	0.36	-61.54	0.21	0.14	-33.33
Sarah Baartman	0.00	0.14	0.00	0.00	0.00	0.00



Free State

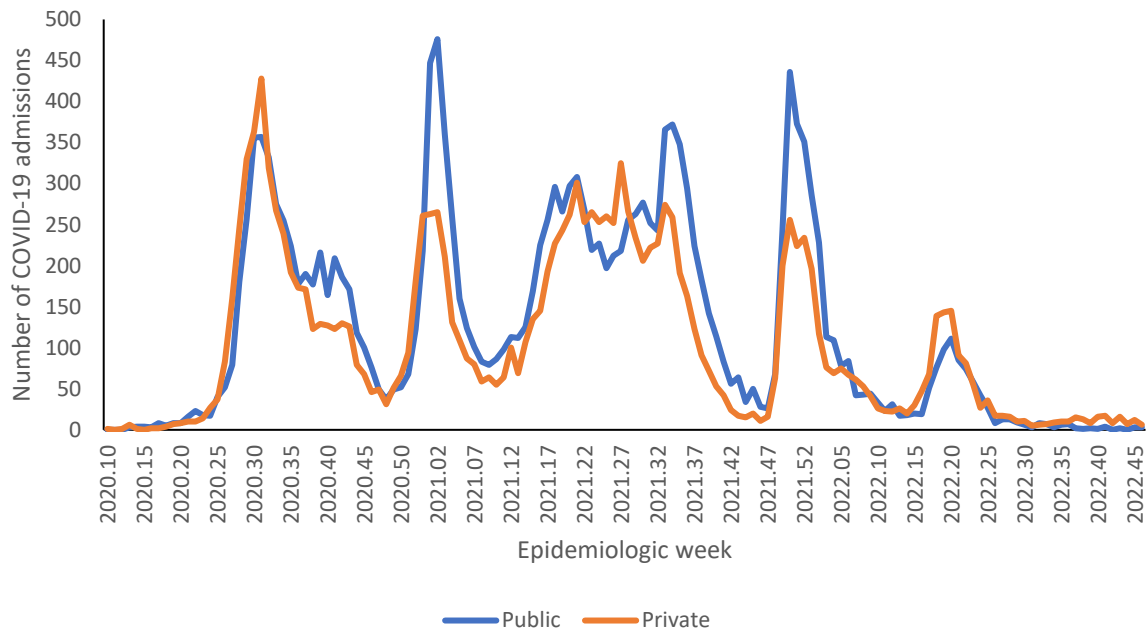


Figure 12: Number of reported COVID-19 admissions by health sector and epidemiologic week of diagnosis, Free State, 5 March 2020-19 November 2022, N=32,754

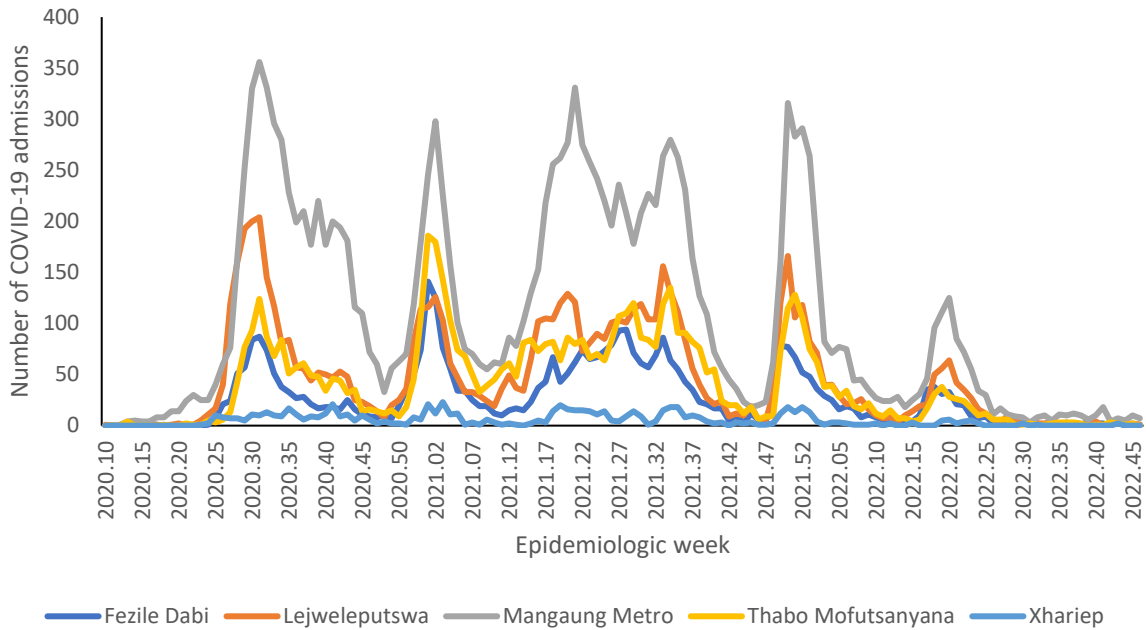


Figure 13: Number of reported COVID-19 admissions, by district and epidemiologic week, Free State, 5 March 2020-19 November 2022, N=32,754

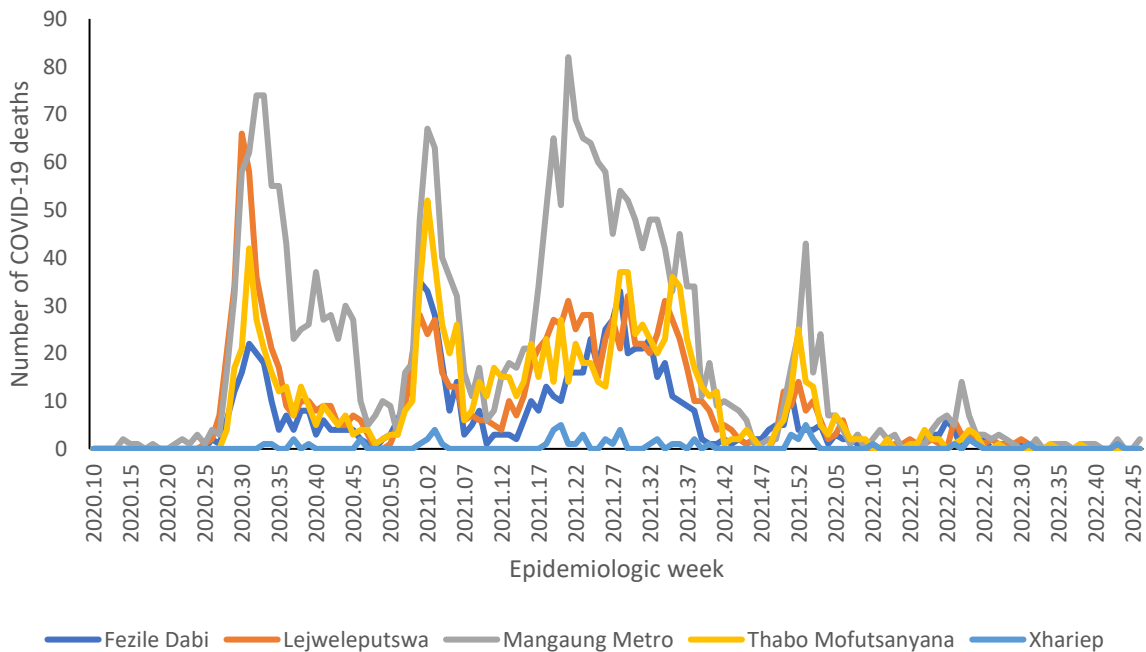


Figure 14: Number of reported COVID-19 in-hospital deaths, by district and epidemiologic week, Free State, 5 March 2020-19 November 2022, N=6,158

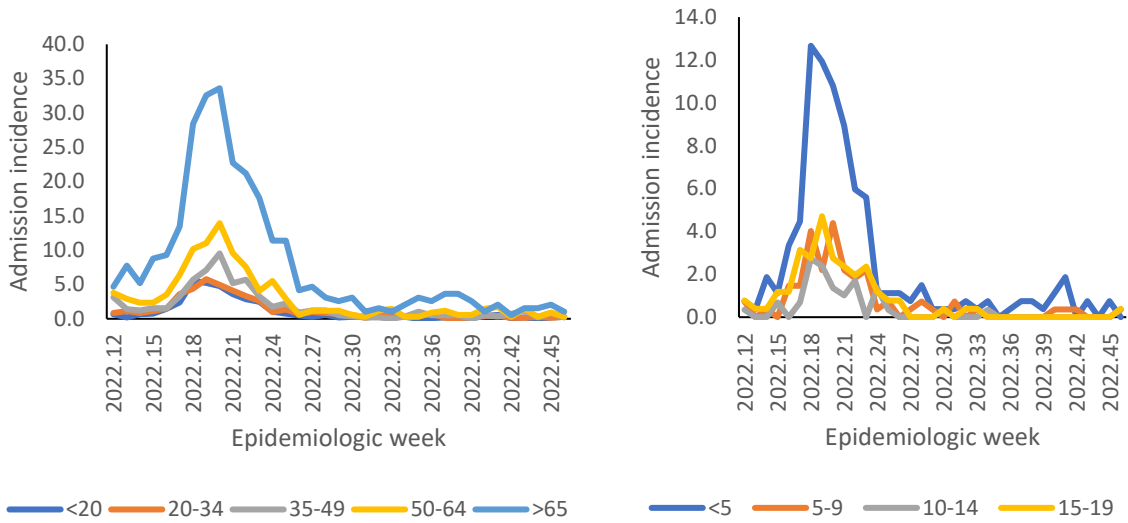


Figure 15: Incidence risk of COVID-19 admissions per 100,000 persons by age group and epidemiologic week of diagnosis, Free State, 19 March 2022- 19 November 2022



Table 6: Previous 14 days and current 14 days average COVID-19 admissions and deaths and percentage changes, Free State, 22 October-19 November 2022.

District	Previous 14 days admissions average	Current 14 days admissions average	Percentage change in admissions	Previous 14 days deaths average	Current 14 days deaths average	Percentage change in deaths
Fezile Dabi	0.36	0.14	-60.00	0.00	0.00	0.00
Lejweleputswa	0.21	0.21	0.00	0.00	0.00	0.00
Mangaung Metro	0.86	1.21	41.67	0.14	0.14	0.00
Thabo Mofutsanyana	0.21	0.14	-33.33	0.00	0.00	0.00
Xhariep	0.14	0.00	-100.00	0.07	0.00	-100.00



Gauteng

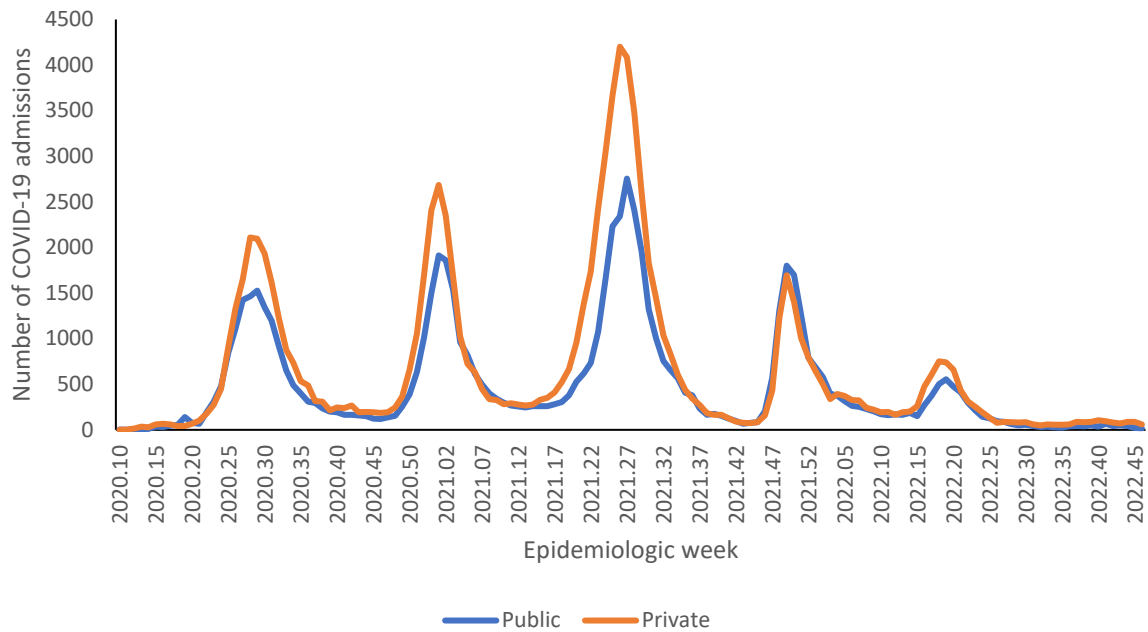


Figure 16: Number of reported COVID-19 admissions by health sector and epidemiologic week of diagnosis, Gauteng, 5 March 2020-19 November 2022, N=161,310

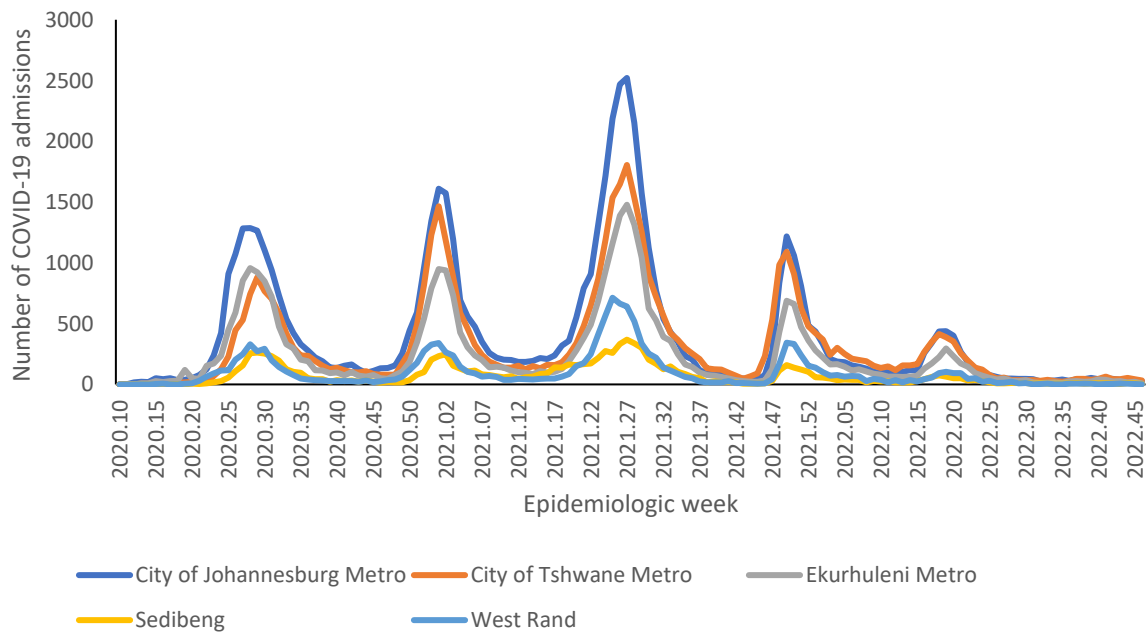


Figure 17: Number of reported COVID-19 admissions, by district and epidemiologic week, Gauteng, 5 March 2020-19 November 2022, N=161,310

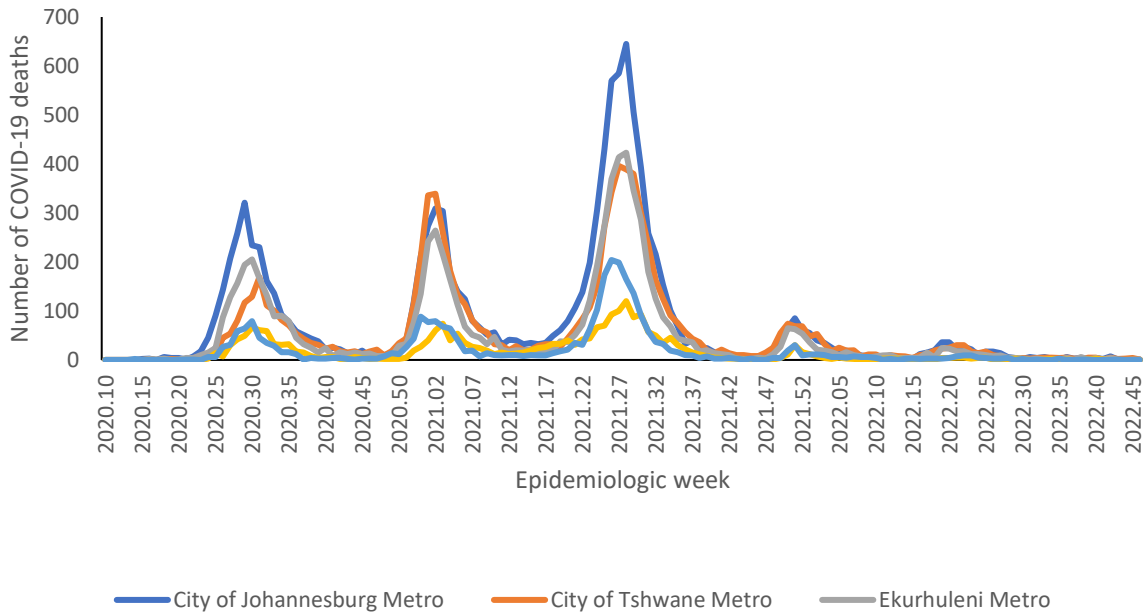


Figure 18: Number of reported COVID-19 in-hospital deaths, by district and epidemiologic week, Gauteng, 5 March 2020-19 November 2022, N=30,710

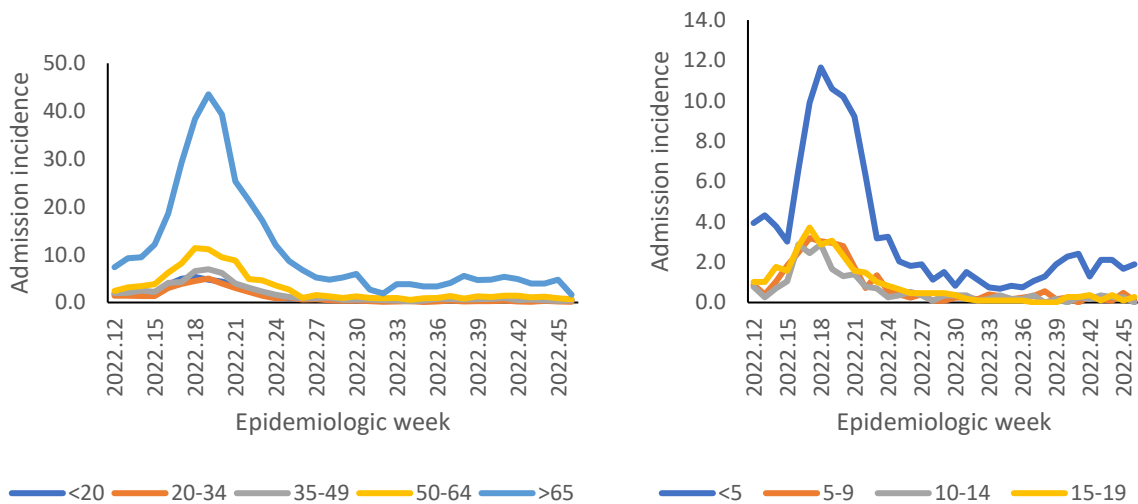


Figure 19: Incidence risk of COVID-19 admissions per 100,000 persons, per age group and epidemiologic week of diagnosis, Gauteng, 19 March 2022- 19 November 2022

Table 7: Previous 14 days and current 14 days average COVID-19 admissions and deaths and percentage changes, Gauteng, 22 October-19 November 2022.

District	Previous 14 days admissions average	Current 14 days admissions average	Percentage change in admissions	Previous 14 days deaths average	Current 14 days deaths average	Percentage change in deaths
City of Johannesburg Metro	5.57	4.43	-20.51	0.07	0.14	100.00
City of Tshwane Metro	6.93	5.21	-24.74	0.36	0.36	0.00
Ekurhuleni Metro	3.21	2.29	-28.89	0.07	0.14	100.00
Sedibeng	1.07	0.79	-26.67	0.00	0.00	0.00
West Rand	0.79	0.36	-54.55	0.07	0.00	-100.00

KwaZulu-Natal

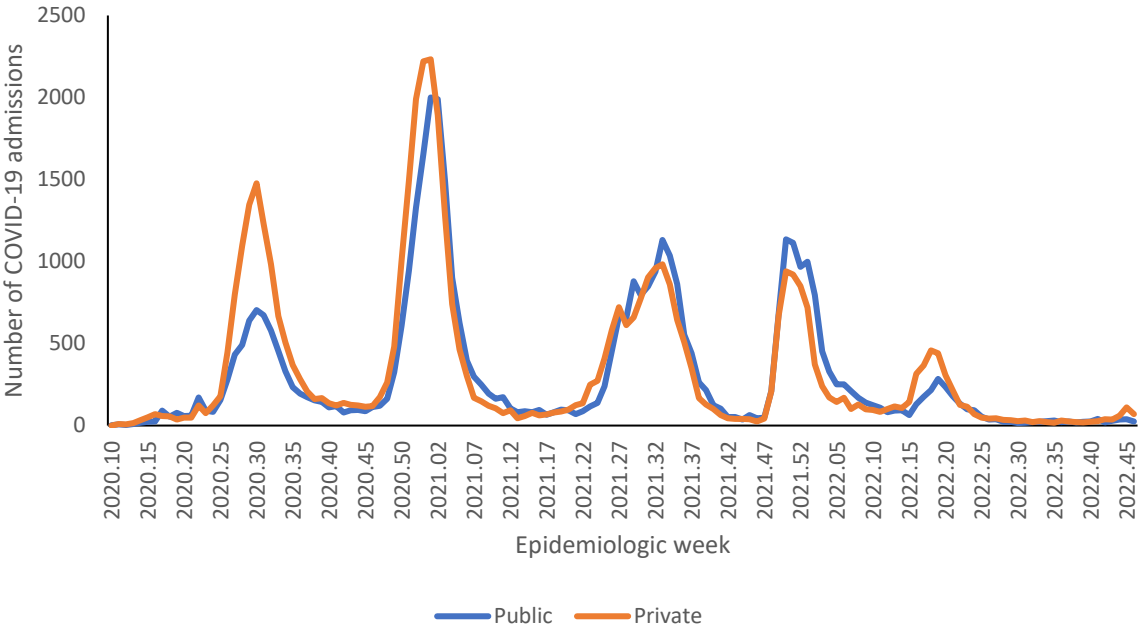


Figure 20: Number of reported COVID-19 admissions by health sector and epidemiologic week of diagnosis, KwaZulu-Natal, 5 March 2020-19 November 2022, N=89,974

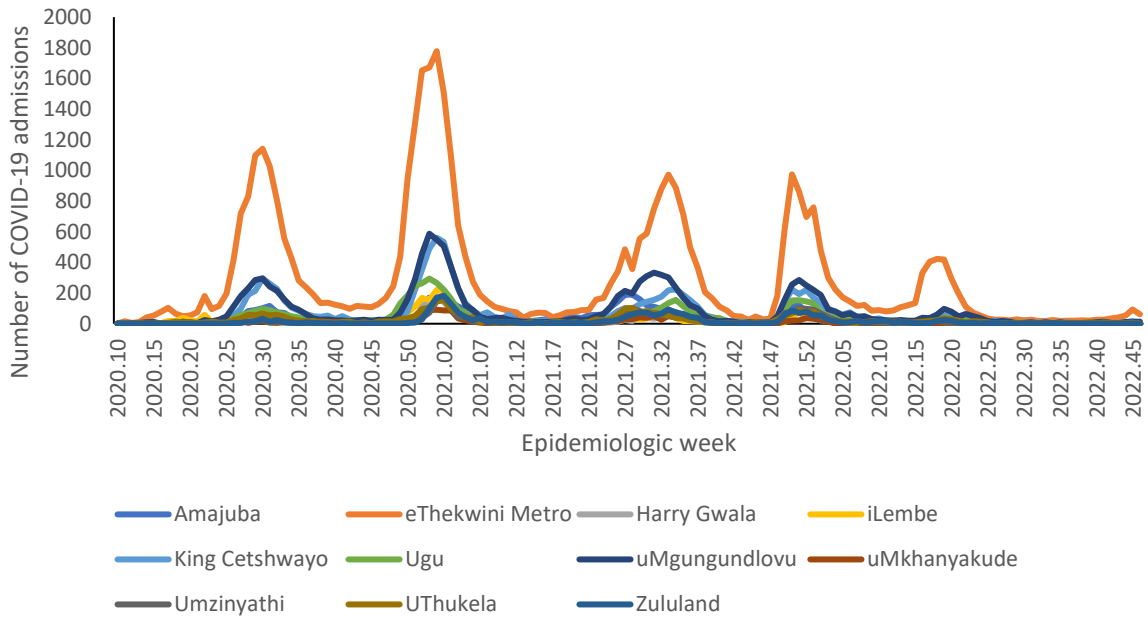


Figure 21: Number of reported COVID-19 admissions, by district and epidemiologic week, KwaZulu-Natal, 5 March 2020-19 November 2022, N=89,974

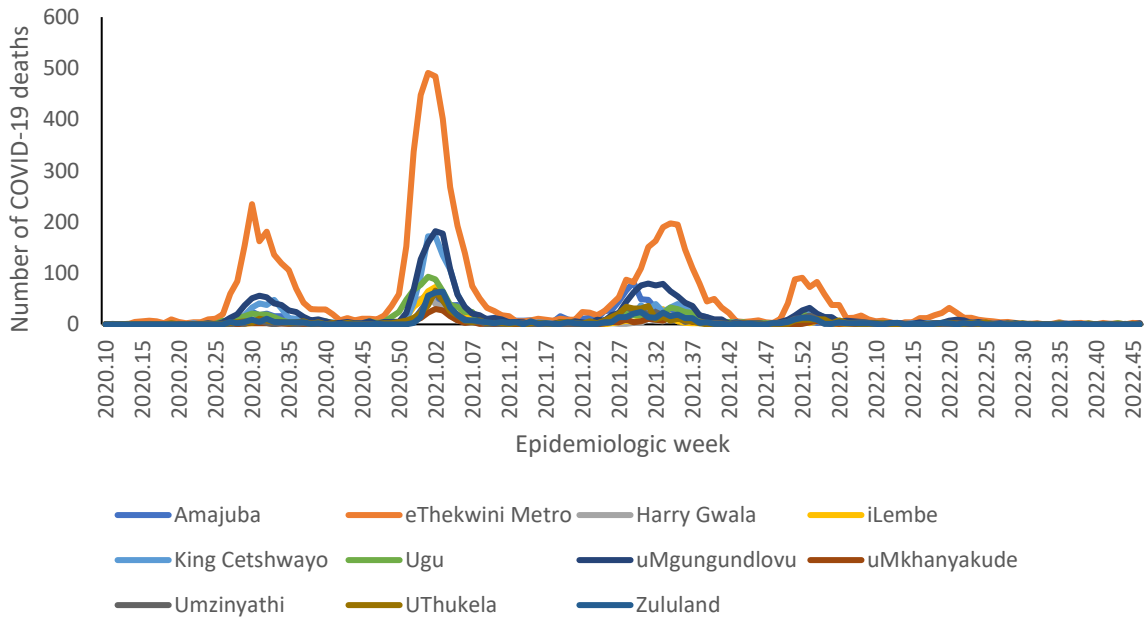


Figure 22: Number of reported COVID-19 in-hospital deaths, by district and epidemiologic week, KwaZulu-Natal, 5 March 2020-19 November 2022, N=17,632

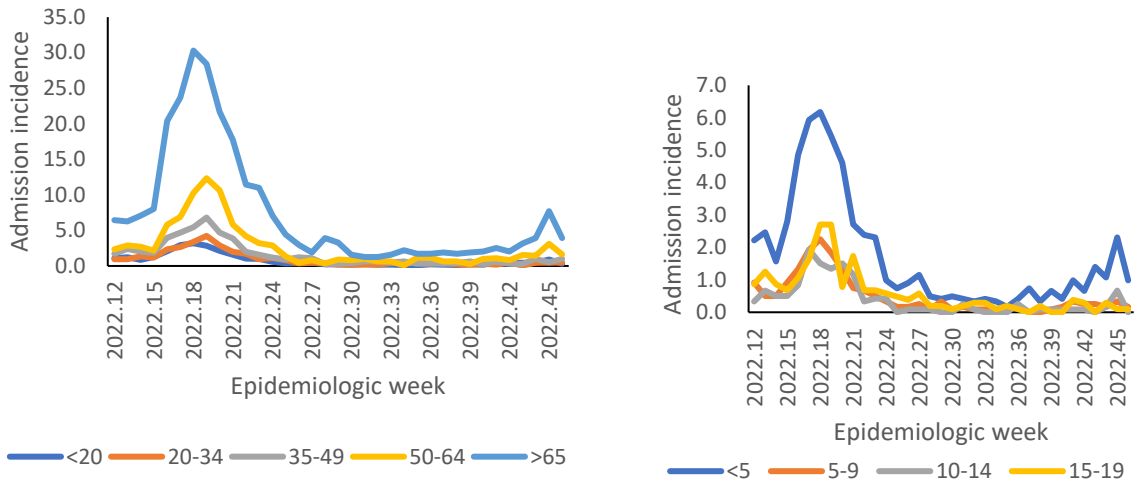


Figure 23: Incidence risk of COVID-19 admissions per 100,000 persons, by age group and epidemiologic week of diagnosis, KwaZulu-Natal, 19 March 2022- 19 November 2022



Table 8: Previous 14 days and current 14 days average COVID-19 admissions and deaths and percentage changes, KwaZulu-Natal, 22 October-19 November 2022.

District	Previous 14 days admissions average	Current 14 days admissions average	Percentage change in admissions	Previous 14 days deaths average	Current 14 days deaths average	Percentage change in deaths
Amajuba	0.29	0.29	0.00	0.00	0.07	0.00
eThekweni Metro	6.71	11.00	63.83	0.14	0.36	150.00
Harry Gwala	0.36	0.29	-20.00	0.00	0.00	0.00
iLembe	0.29	0.50	75.00	0.00	0.00	0.00
King Cetshwayo	1.07	1.86	73.33	0.00	0.07	0.00
Ugu	0.57	1.07	87.50	0.14	0.07	-50.00
uMgungundlovu	0.93	1.64	76.92	0.00	0.14	0.00
uMkhanyakude	0.36	0.00	-100.00	0.00	0.07	0.00
Umzinyathi	0.21	0.43	100.00	0.07	0.00	-100.00
UThukela	0.50	0.29	-42.86	0.07	0.00	-100.00
Zululand	0.14	0.00	-100.00	0.00	0.00	0.00



Limpopo

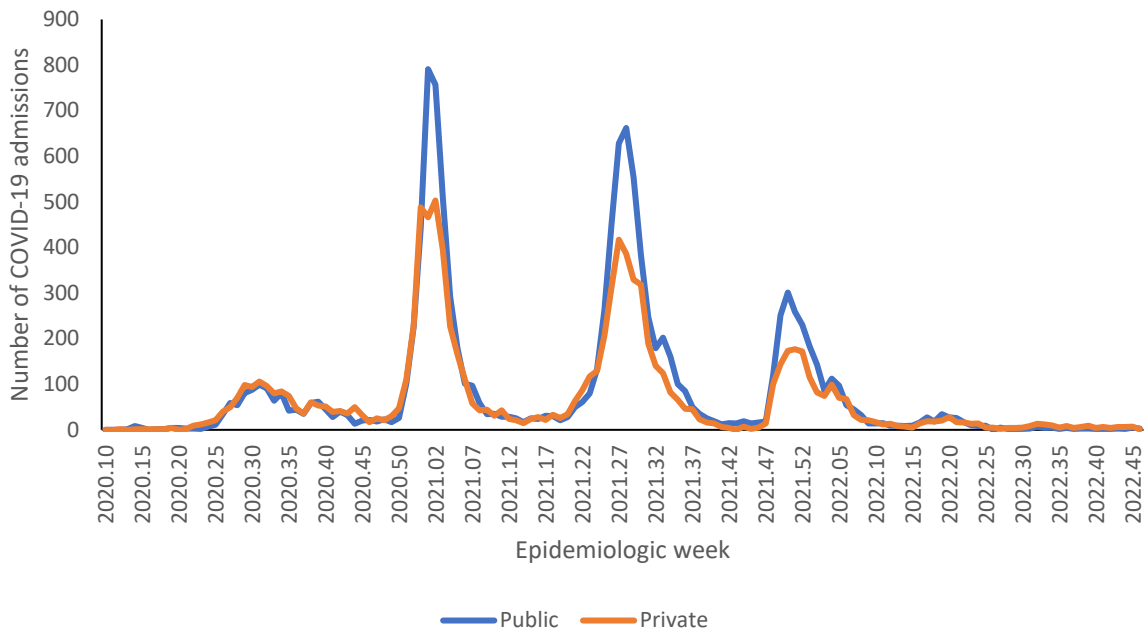


Figure 24: Number of reported COVID-19 admissions by health sector and epidemiologic week of diagnosis, Limpopo, 5 March 2020-19 November 2022, N=21,243

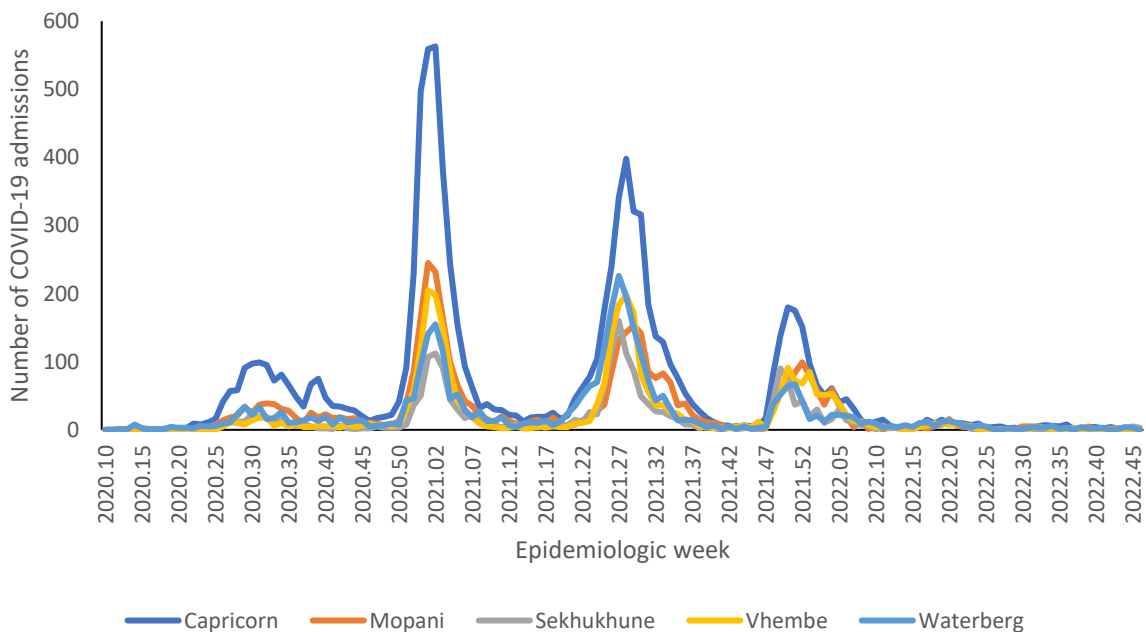


Figure 25: Number of reported COVID-19 admissions, by district and epidemiologic week, Limpopo, 5 March 2020-19 November 2022, N=21,243

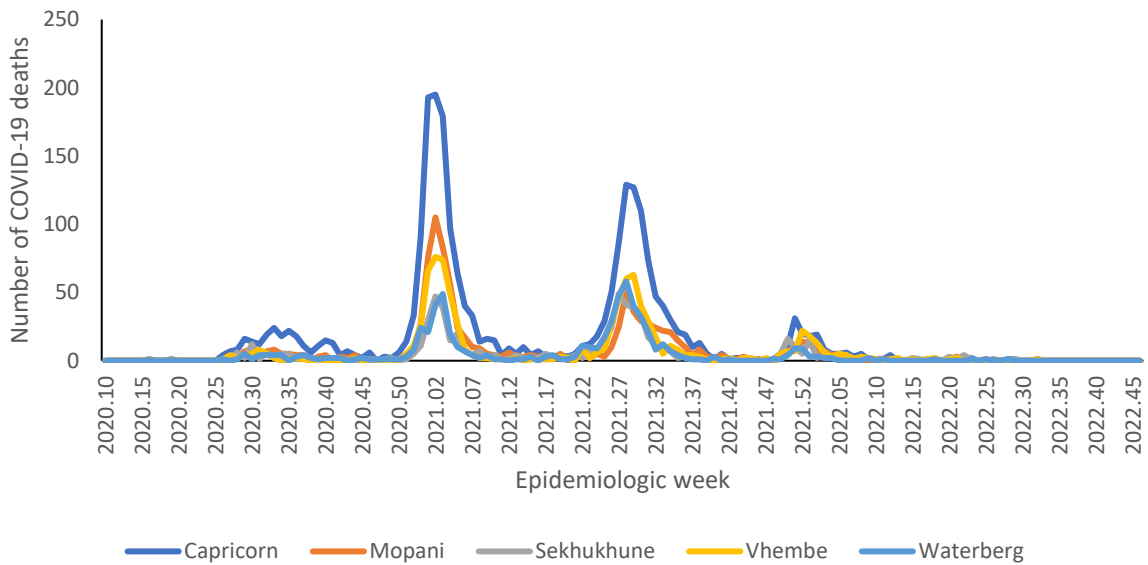


Figure 26: Number of reported COVID-19 in-hospital deaths, by district and epidemiologic week, Limpopo, 5 March 2020-19 November 2022, N=5,331

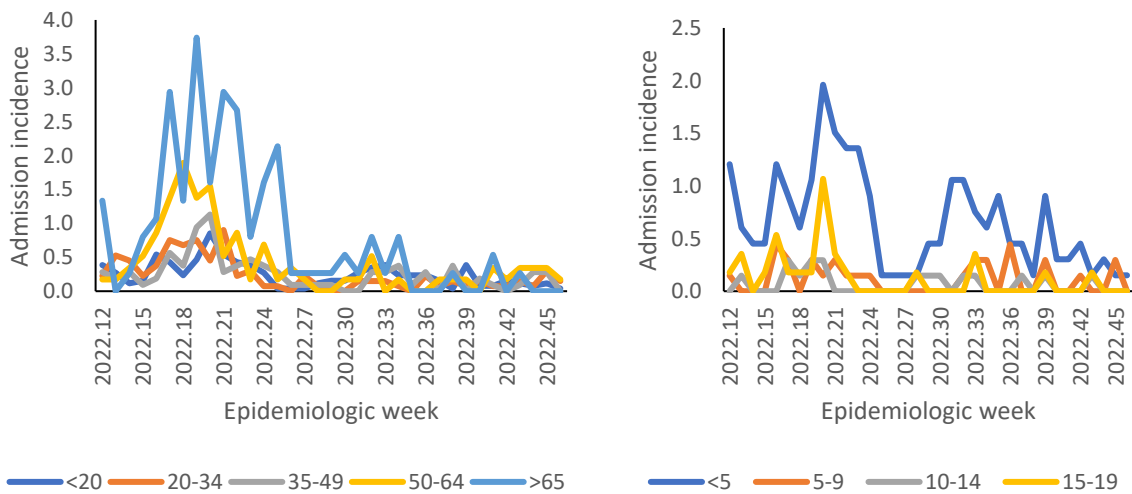


Figure 27: Incidence risk of COVID-19 admissions per 100,000 persons, by age group and epidemiologic week of diagnosis, Limpopo, 19 March 2022-19 November 2022



Table 9: Previous 14 days and current 14 days average COVID-19 admissions and deaths and percentage changes, Limpopo, 22 October-19 November 2022.

District	Previous 14 days admissions average	Current 14 days admissions average	Percentage change in admissions	Previous 14 days deaths average	Current 14 days deaths average	Percentage change in deaths
Capricorn	0.36	0.14	-60.00	0.00	0.00	0.00
Mopani	0.14	0.21	50.00	0.00	0.00	0.00
Sekhukhune	0.21	0.57	166.67	0.00	0.00	0.00
Vhembe	0.14	0.00	-100.00	0.00	0.00	0.00
Waterberg	0.36	0.21	-40.00	0.00	0.00	0.00

Mpumalanga

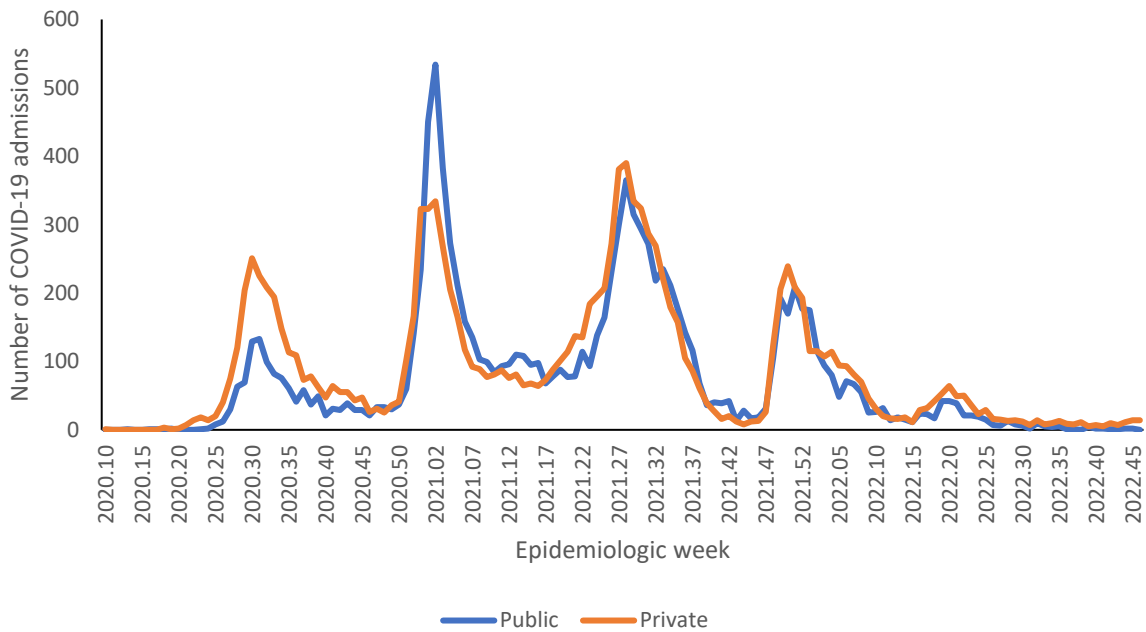


Figure 28: Number of reported COVID-19 admissions by health sector and epidemiologic week of diagnosis, Mpumalanga, 5 March 2020-19 November 2022, N=23,124

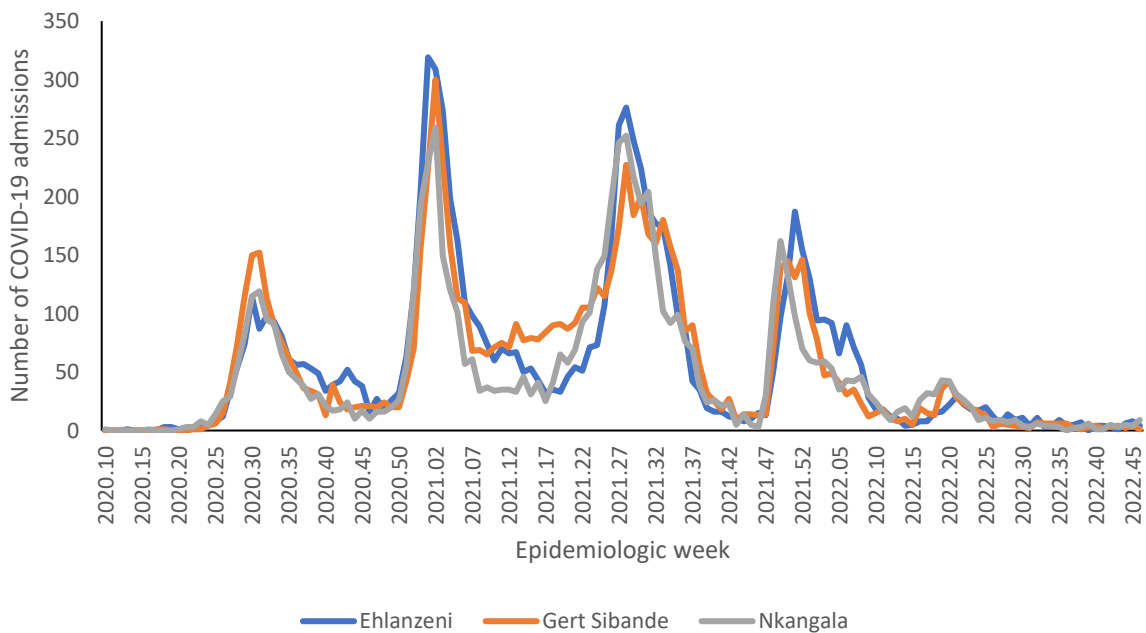


Figure 29: Number of reported COVID-19 admissions, by district and epidemiologic week, Mpumalanga, 5 March 2020-19 November 2022, N=23,124

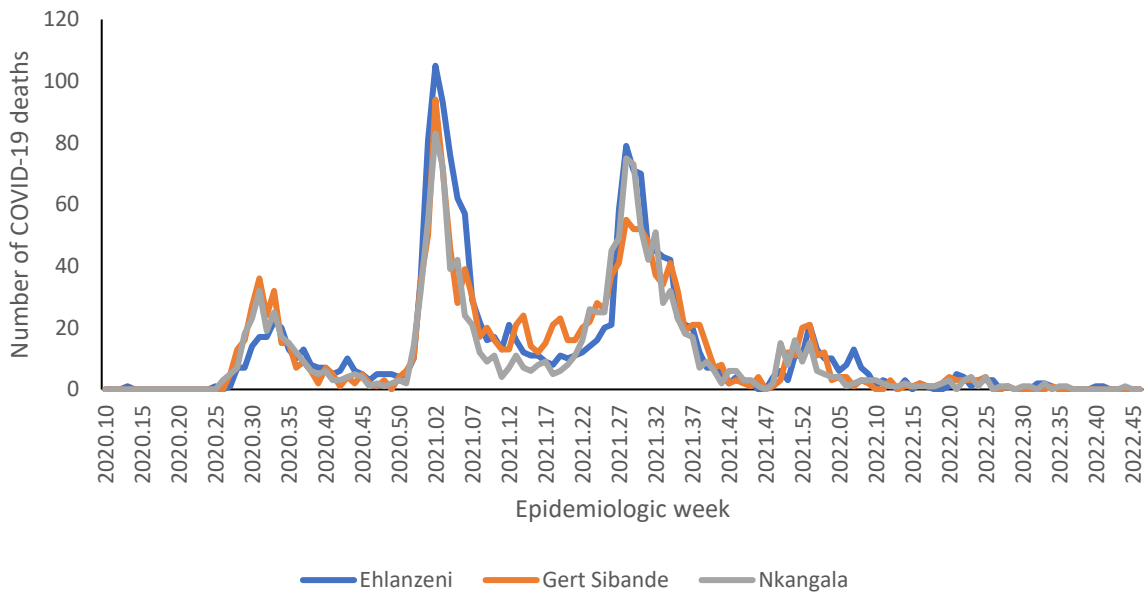


Figure 30: Number of reported COVID-19 in-hospital deaths, by district and epidemiologic week, Mpumalanga, 5 March 2020-19 November 2022, N=4,930

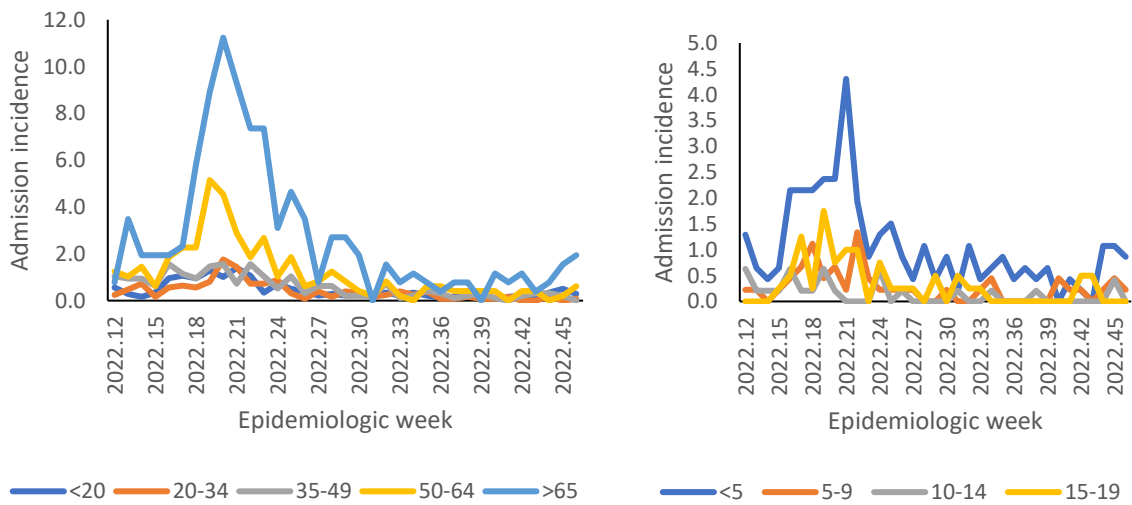


Figure 31: Incidence risk of COVID-19 admissions per 100,000 persons, by age group and epidemiologic week of diagnosis, Mpumalanga, 19 March 2022-19 November 2022

Table 10: Previous 14 days and current 14 days average COVID-19 admissions and deaths and percentage changes, Mpumalanga, 22 October-19 November 2022.

District	Previous 14 days admissions average	Current 14 days admissions average	Percentage change in admissions	Previous 14 days deaths average	Current 14 days deaths average	Percentage change in deaths
Ehlanzeni	0.50	0.86	71.43	0.00	0.00	0.00
Gert Sibande	0.43	0.36	-16.67	0.00	0.00	0.00
Nkangala	0.57	0.93	62.50	0.07	0.00	-100.00



North West

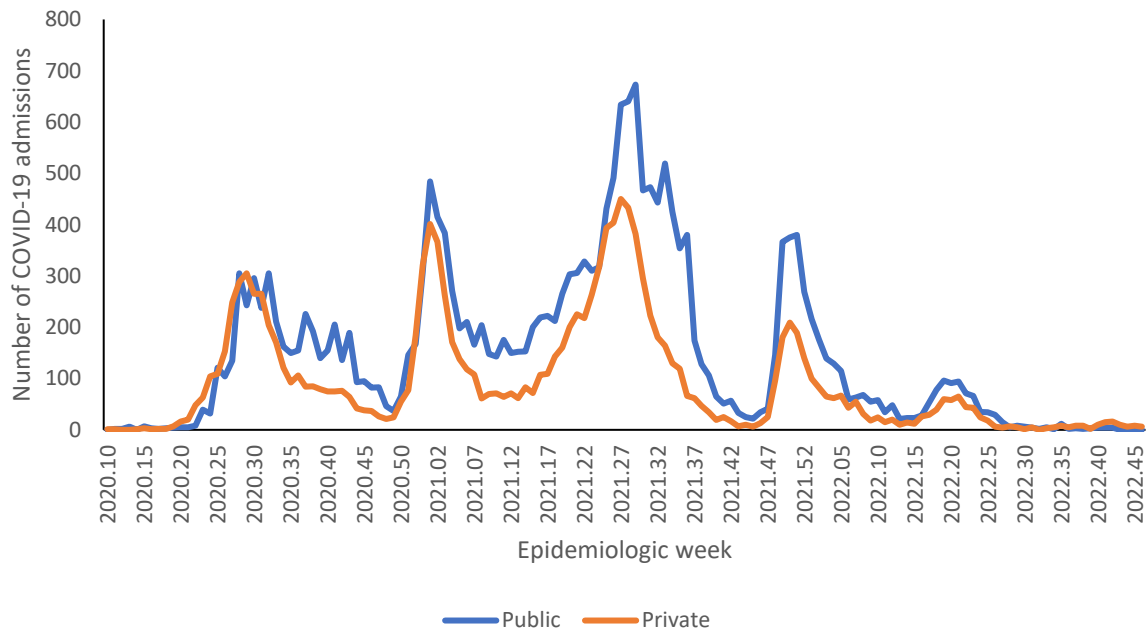


Figure 32: Number of reported COVID-19 admissions by health sector and epidemiologic week of diagnosis, North West, 5 March 2020-19 November 2022, N=34,291

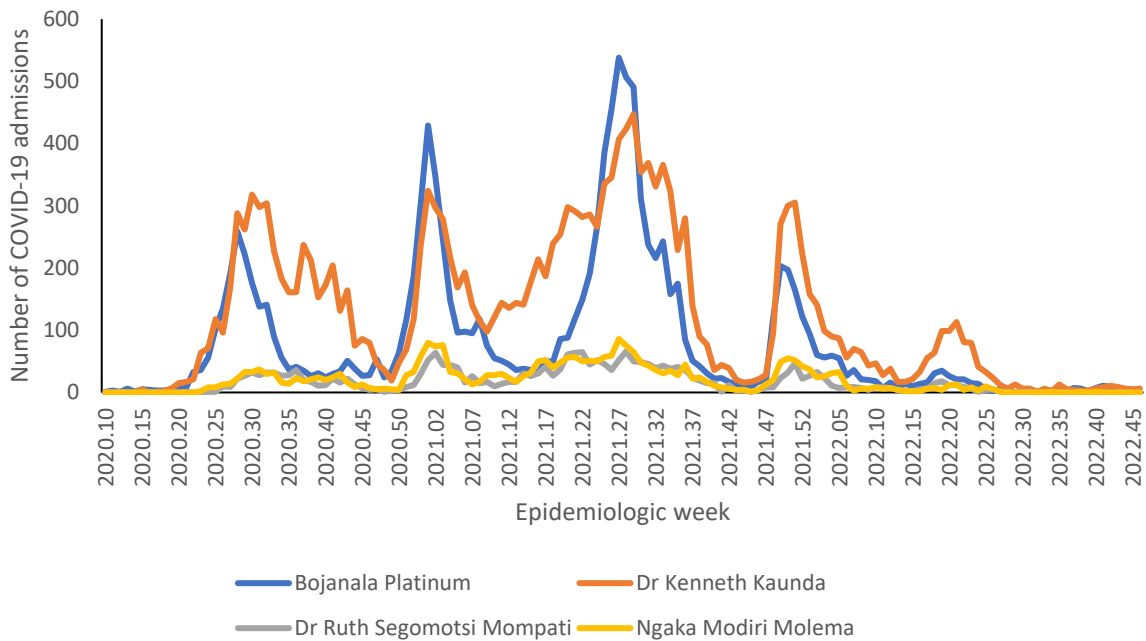


Figure 33: Number of reported COVID-19 admissions, by district and epidemiologic week, North West, 5 March 2020-19 November 2022, N=34,291

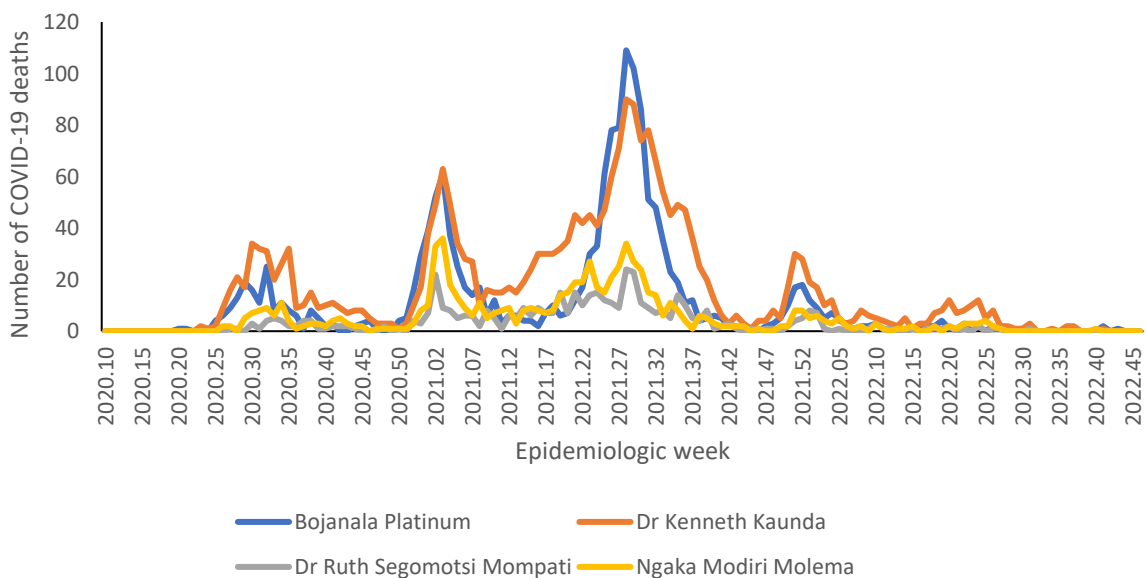


Figure 34: Number of reported COVID-19 in-hospital deaths, by district and epidemiologic week, North West, 5 March 2020-19 November 2022, N=5,017

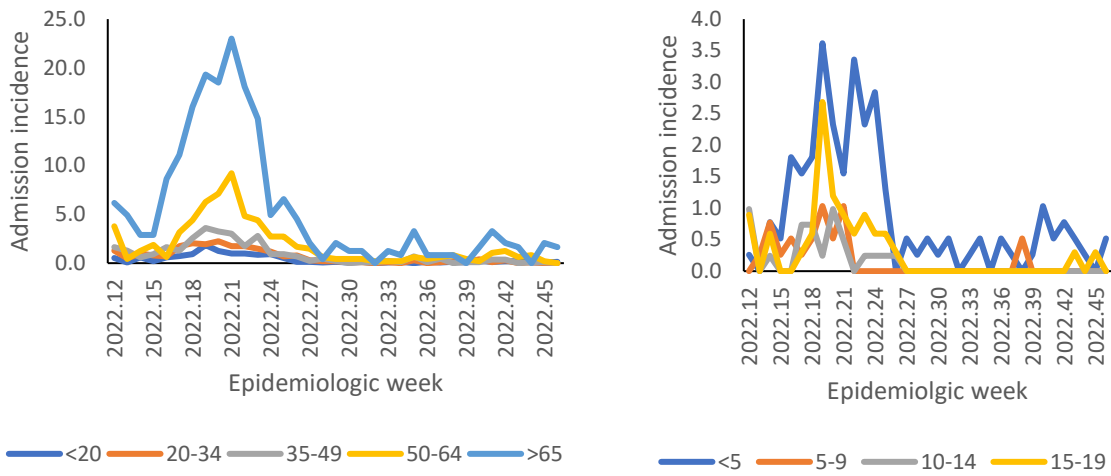


Figure 35: Incidence risk of COVID-19 admissions per 100,000 persons, by age group and epidemiologic week of diagnosis, North West, 19 March 2022-19 November 2022



Table 11: Previous 14 days and current 14 days average COVID-19 admissions and deaths and percentage changes, North West, 22 October-19 November 2022.

District	Previous 14 days admissions average	Current 14 days admissions average	Percentage change in admissions	Previous 14 days deaths average	Current 14 days deaths average	Percentage change in deaths
Bojanala Platinum	0.14	0.21	50.00	0.07	0.00	-100.00
Dr Kenneth Kaunda	1.07	0.79	-26.67	0.00	0.00	0.00
Dr Ruth Segomotsi Mompati	0.00	0.00	0.00	0.00	0.00	0.00
Ngaka Modiri Molema	0.00	0.00	0.00	0.00	0.00	0.00



Northern Cape

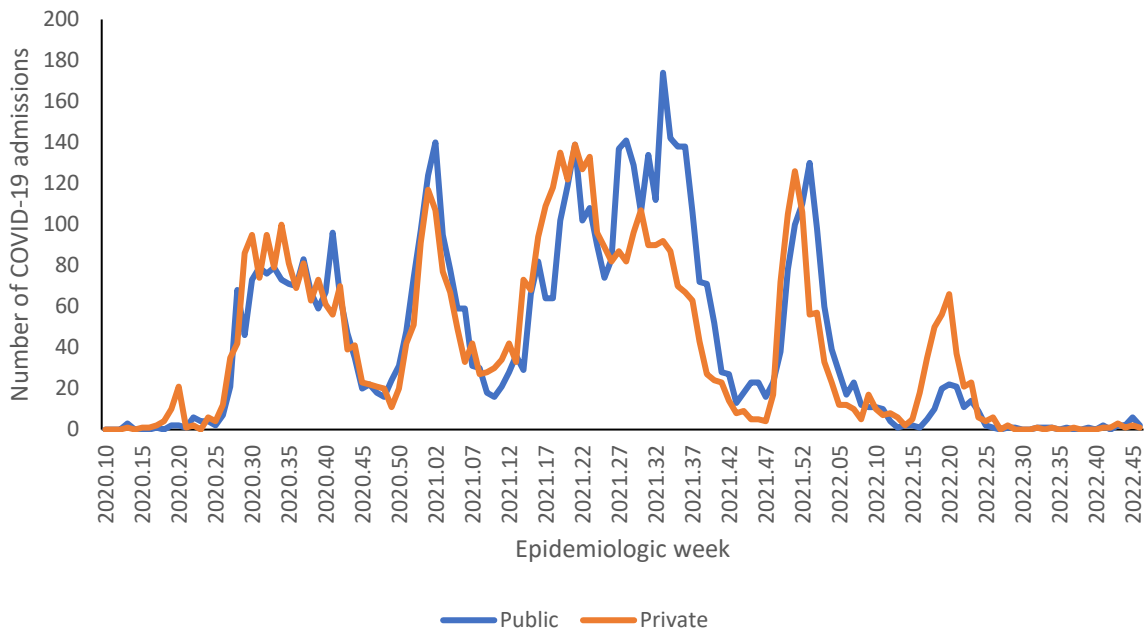


Figure 36: Number of reported COVID-19 admissions by health sector and epidemiologic week of diagnosis, Northern Cape, 5 March 2020-19 November 2022, N=11,933

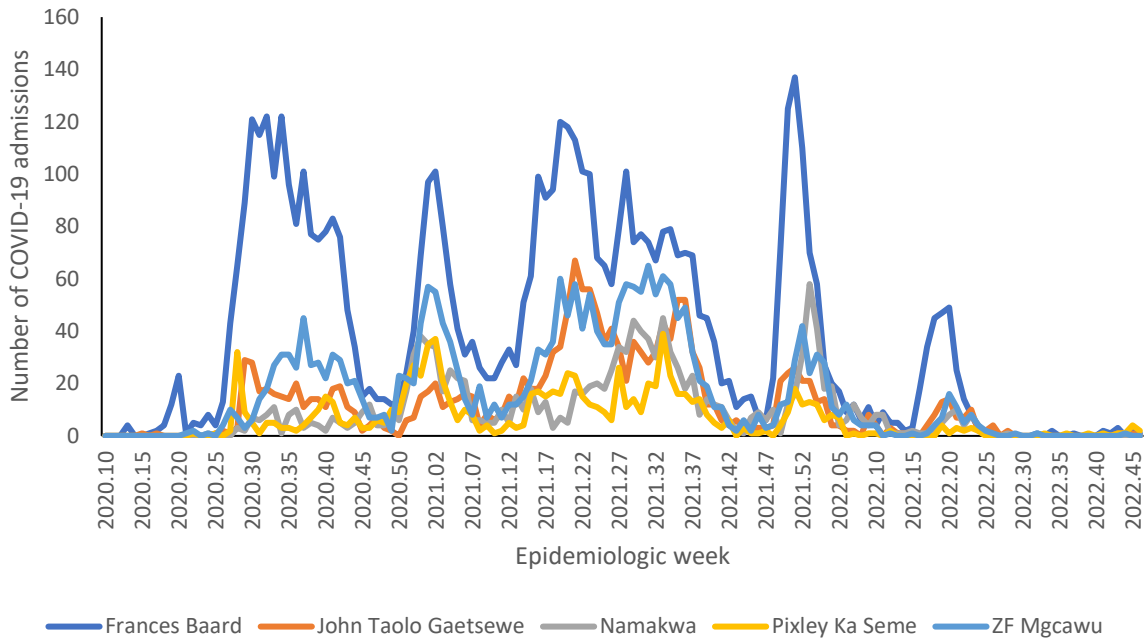


Figure 37: Number of reported COVID-19 admissions by district and epidemiologic week, Northern Cape, 5 March 2020-19 November 2022, N=11,933

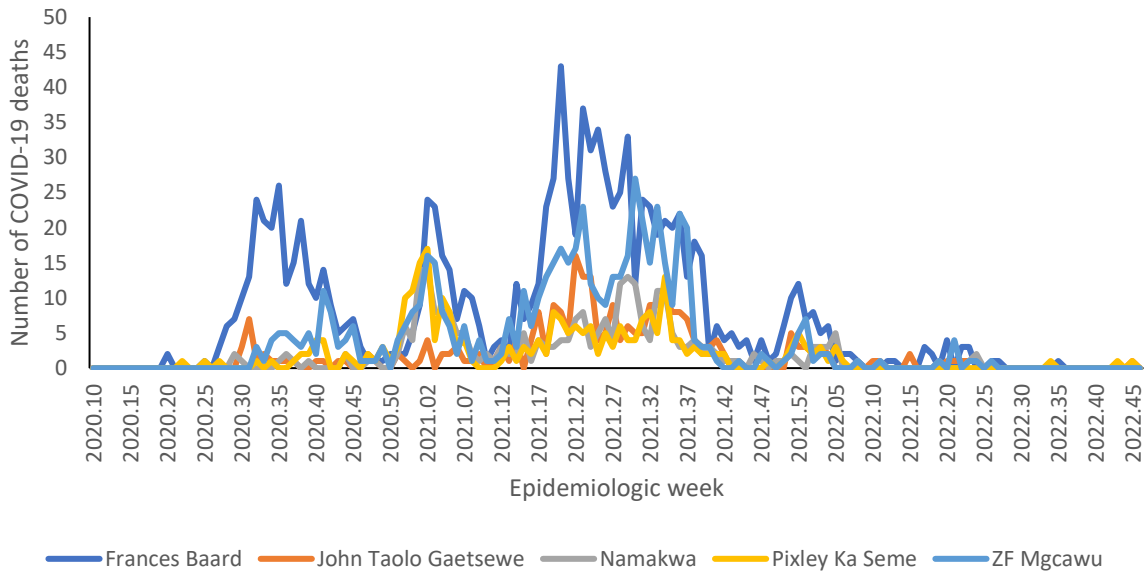


Figure 38: Number of reported COVID-19 in-hospital deaths, by district and epidemiologic week, Northern Cape, 5 March 2020-19 November 2022, N=2,461

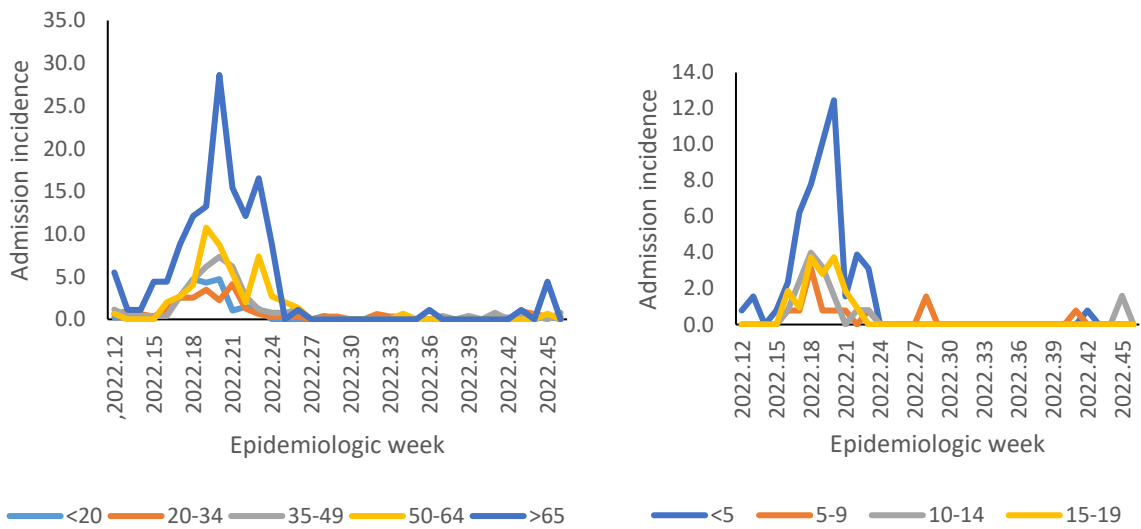


Figure 39: Incidence risk of COVID-19 admissions per 100,000 persons, by age group and epidemiologic week of diagnosis, Northern Cape, 19 March 2022- 19 November 2022

Table 12: Previous 14 days and current 14 days average COVID-19 admissions and deaths and percentage changes, Northern Cape, 22 October-19 November 2022.

District	Previous 14 days admissions average	Current 14 days admissions average	Percentage change in admissions	Previous 14 days deaths average	Current 14 days deaths average	Percentage change in deaths
Frances Baard	0.21	0.29	33.33	0.00	0.00	0.00
John Taolo Gaetsewe	0.14	0.07	-50.00	0.00	0.07	0.00
Namakwa	0.00	0.00	0.00	0.00	0.00	0.00
Pixley Ka Seme	0.14	0.43	200.00	0.07	0.07	0.00
ZF Mgcawu	0.07	0.00	-100.00	0.00	0.00	0.00



Western Cape

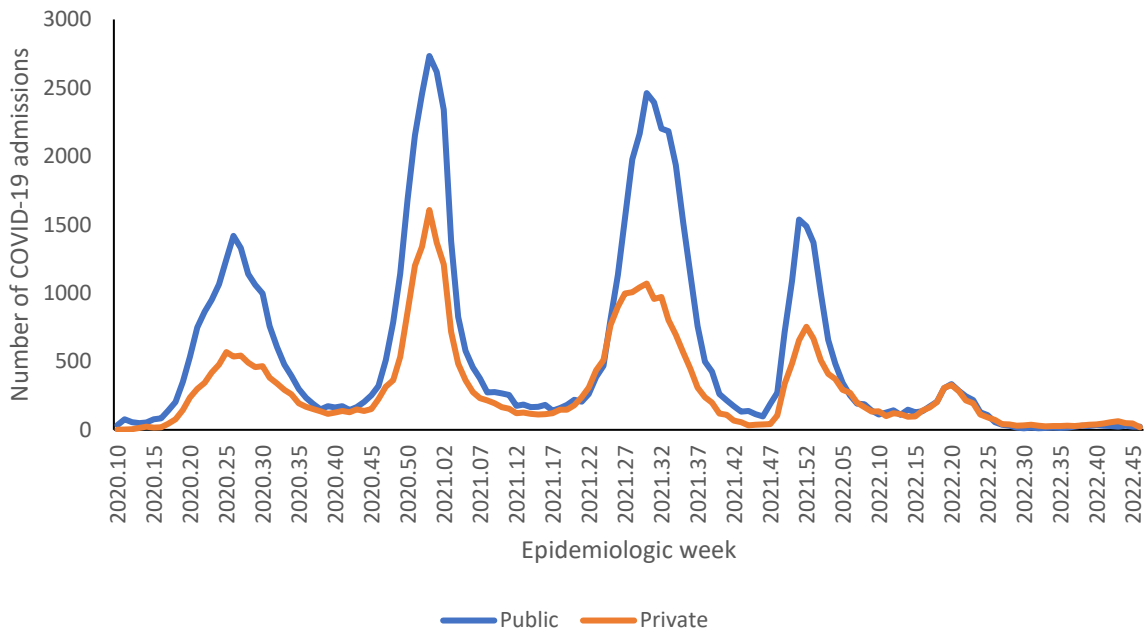


Figure 40: Number of reported COVID-19 admissions by health sector and epidemiologic week of diagnosis, Western Cape, 5 March 2020-19 November 2022, N=121,559

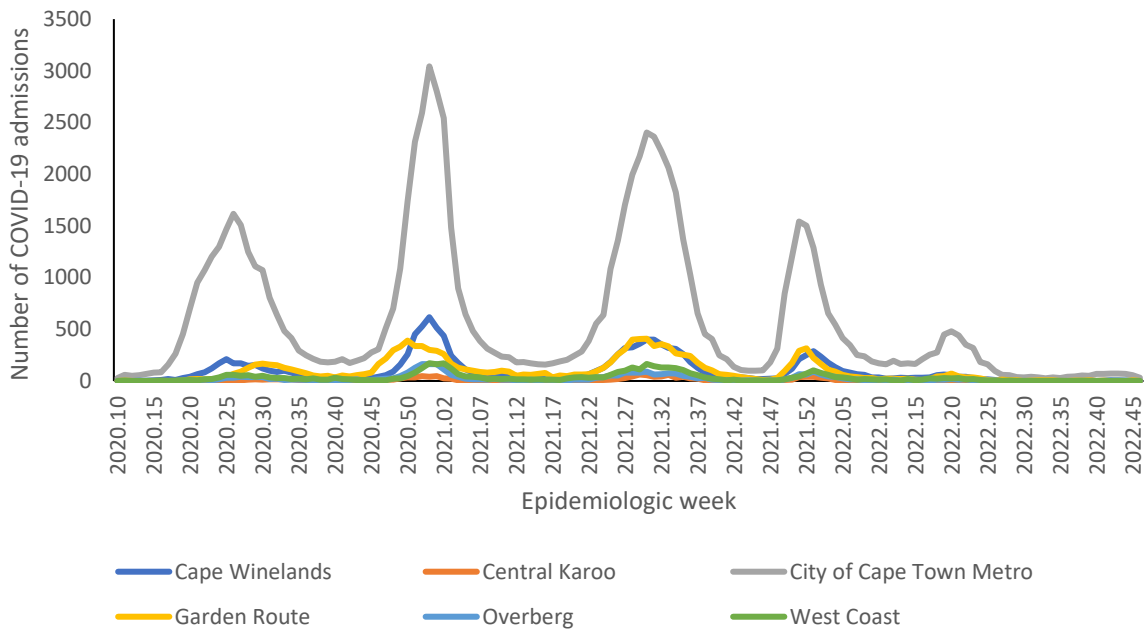


Figure 41: Number of reported COVID-19 admissions, by district and epidemiologic week, Western Cape, 5 March 2020-19 November 2022, N=121,559

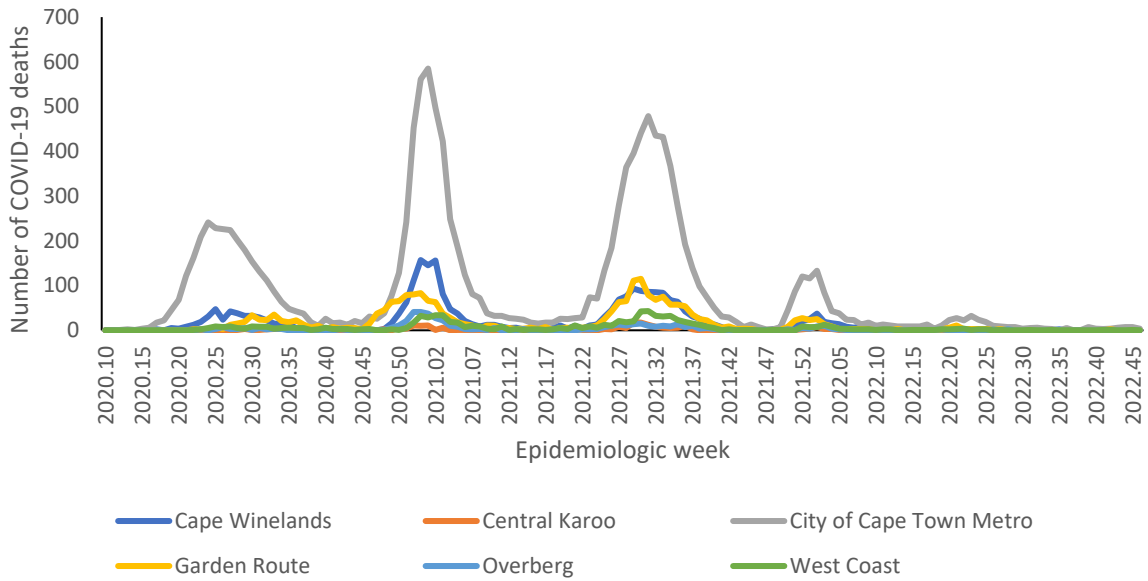


Figure 42: Number of reported COVID-19 in-hospital deaths, by district and epidemiologic week, Western Cape, 5 March 2020-19 November 2022, N=18,950

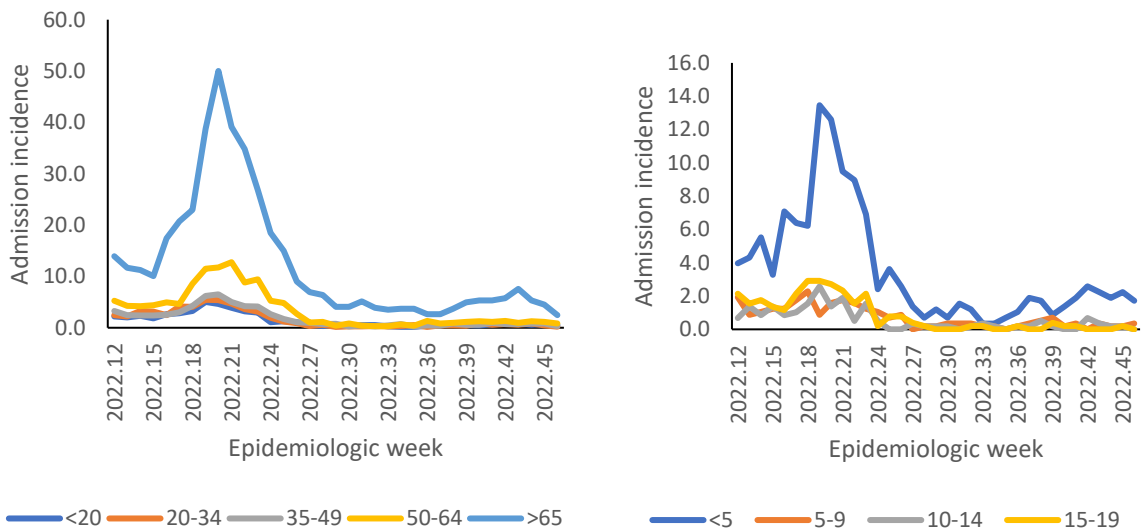


Figure 43: Incidence risk of COVID-19 admissions per 100,000 persons, by age group and epidemiological week of diagnosis, Western Cape, 19 March 2022- 19 November 2022



Table 13: Previous 14 days and current 14 days average COVID-19 admissions and deaths and percentage changes, Western Cape, 22 October-19 November 2022.

District	Previous 14 days admissions average	Current 14 days admissions average	Percentage change in admissions	Previous 14 days deaths average	Current 14 days deaths average	Percentage change in deaths
Cape Winelands	0.57	0.79	37.50	0.00	0.07	0.00
Central Karoo	0.00	0.00	0.00	0.00	0.00	0.00
City of Cape Town Metro	10.00	6.43	-35.71	0.93	0.79	-15.38
Garden Route	0.29	0.50	75.00	0.07	0.00	-100.00
Overberg	0.79	0.14	-81.82	0.00	0.00	0.00
West Coast	0.07	0.14	100.00	0.00	0.07	0.00

Limitation

DATCOV now includes reporting from all hospitals with COVID-19 admissions, but many hospitals are yet to reach complete submission of historic data. Data quality in a surveillance system is dependent on the information submitted by healthcare institutions. It is not possible for the NICD to verify or check the quality of all these data, however, the NICD has built-in data quality checks. Delays in reporting of admissions and deaths may affect the numbers reported in the most recent week. The National Department of Health have recruited data capturers to support hospitals to improve data submission.

As hospitals reached capacity, admission criteria may change and therefore influence trends and inferences about the progression of the epidemic. DATCOV only reports hospital-based admissions and deaths and therefore does not include deaths occurring outside hospitals. DATCOV now has a module to record out-of-hospital deaths.

Severity data has some inherent limitations. We rely on a proxy indicator for severity and do not have clinical or laboratory parameters to ascertain clinical severity. In the early and late phases of the wave there is likely to be lower severity due to there being sufficient hospital capacity. It may take a few weeks for hospitalisation outcomes to accumulate. Early reporting on case fatality ratio is also biased particularly in older adults who may have longer admissions and are more likely to die.

Acknowledgements

All public and private sector hospitals submitting data to DATCOV

Private hospital groups submitting data to DATCOV:

- Netcare
- Life Healthcare
- Mediclinic Southern Africa
- National Hospital Network (NHN)
- Clinix Health Group
- Lenmed
- Joint Medical Holdings (JMH)

Appendix

Table 14: Percentage incidence change in hospital admissions over 14 days, by district, South Africa, 5 November 2022-19 November 2022.

Province	District	Total admissions	Incidence (per 100k)	New admissions	New admissions incidence (per 100k)	% Average change (14 days)
Eastern Cape	Alfred Nzo	2778	336.93	3	0.36	200.00
	Amathole	3320	424.25	0	0.00	-100.00
	Buffalo City Metro	10702	1352.13	2	0.25	0.00
	Chris Hani	5355	751.51	0	0.00	-100.00
	Joe Gqabi	1223	356.65	0	0.00	-100.00
	Nelson Mandela Bay Metro	17047	1413.05	5	0.41	25.00
	O R Tambo	5070	330.60	1	0.07	-75.00
	Sarah Baartman	3427	710.16	1	0.21	0.00
Free State	Fezile Dabi	3859	754.37	1	0.20	0.00
	Lejweleputswa	6773	1036.92	1	0.15	-50.00
	Mangaung Metro	15516	1770.46	8	0.91	-20.00
	Thabo Mofutsanyana	5867	767.65	0	0.00	-100.00
	Xhariep	739	581.69	0	0.00	100.00
Gauteng	City of Johannesburg Metro	57194	951.14	31	0.52	-26.19
	City of Tshwane Metro	45109	1180.75	38	0.99	-19.15
	Ekurhuleni Metro	34729	858.27	11	0.27	-50.00
	Sedibeng	10304	1057.89	3	0.31	-62.50
	West Rand	13975	1461.19	2	0.21	-33.33
KwaZulu-Natal	Amajuba	4754	838.44	1	0.18	-66.67
	eThekweni Metro	41538	1035.97	65	1.62	-35.64
	Harry Gwala	2835	560.13	0	0.00	-100.00
	iLembe	3088	443.86	4	0.57	-20.00
	King Cetshwayo	9855	1032.88	9	0.94	-52.63
	Ugu	5989	744.48	5	0.62	-50.00
	uMgungundlovu	12036	1055.87	14	1.23	40.00
	uMkhanyakude	1525	221.66	0	0.00	100.00
	Umzinyathi	2430	430.78	0	0.00	-100.00
	UThukela	3376	482.02	1	0.14	-80.00
Limpopo	Zululand	2551	288.52	0	0.00	100.00
	Capricorn	8770	660.92	0	0.00	-100.00
	Mopani	3835	318.87	1	0.08	-50.00
	Sekhukhune	2159	177.46	3	0.25	-50.00
	Vhembe	3093	216.24	0	0.00	100.00



	Waterberg	3386	451.38	0	0.00	-100.00
Mpumalanga	Ehlanzeni	8199	448.43	4	0.22	-50.00
	Gert Sibande	7869	620.64	1	0.08	-75.00
	Nkangala	7056	428.33	9	0.55	28.57
North West	Bojanala Platinum	11439	587.17	0	0.00	-100.00
	Dr Kenneth Kaunda	17648	2196.93	6	0.75	20.00
	Dr Ruth Segomotsi Mompoti	2391	512.52	0	0.00	100.00
	Ngaka Modiri Molema	2813	310.88	0	0.00	100.00
Northern Cape	Frances Baard	5608	1348.17	1	0.24	-66.67
	John Taolo Gaetsewe	1703	616.23	0	0.00	-100.00
	Namakwa	1350	1153.93	0	0.00	100.00
	Pixley Ka Seme	942	447.69	2	0.95	-50.00
	ZF Mgcawu	2330	822.41	0	0.00	100.00
Western Cape	Cape Winelands	13652	1428.31	12	1.26	140.00
	Central Karoo	1403	1851.12	0	0.00	100.00
	City of Cape Town Metro	85187	1820.66	46	0.98	-32.35
	Garden Route	13386	2130.70	2	0.32	-66.67
	Overberg	3351	1096.79	0	0.00	-100.00
	West Coast	4591	977.86	1	0.21	0.00

Table 15: Number of reported COVID-19 admissions and in-hospital deaths by age and gender, South Africa, 5 March 2020-19 November 2022.

Age Group (Years)	ADMISSIONS				DEATHS			
	Female	Male	Unknown	Total	Female	Male	Unknown	Total
0-4	7699	9792	56	17547	185	217	4	406
5-9	2118	2814	8	4940	31	39	0	70
10-14	2767	2875	12	5654	70	71	1	142
15-19	7396	4176	6	11578	164	140	0	304
20-24	11426	5784	10	17220	367	283	1	651
25-29	18031	8170	11	26212	784	536	0	1320
30-34	23090	12853	15	35958	1322	1135	2	2459
35-39	23602	16790	22	40414	1883	1783	4	3670
40-44	20801	18470	18	39289	2296	2377	0	4673
45-49	22902	22383	12	45297	3237	3459	1	6697
50-54	26389	24720	10	51119	4408	4587	2	8997
55-59	29276	26733	16	56025	6215	6257	5	12477
60-64	26176	23916	16	50108	6697	6917	6	13620
65-69	22636	20229	19	42884	6956	6519	6	13481
70-74	19488	17226	19	36733	6195	6060	4	12259
75-79	14891	12354	9	27254	4949	4647	3	9599
80-84	11448	8202	8	19658	4067	3195	3	7265
85-89	6332	3968	2	10302	2304	1690	0	3994
90-94	2785	1420	1	4206	1127	667	0	1794
>=95	845	397	3	1245	373	168	0	541
Unknown	802	619	46	1467	46	44	0	90
Total	300900	243891	319	545110	53676	50791	42	104509



**NATIONAL INSTITUTE FOR
COMMUNICABLE DISEASES**

Division of the National Health Laboratory Service