

## COVID-19 Hospital Surveillance

### Update: Week 47, 2022

#### Overview of report

This report summarises data of COVID-19 cases admitted to hospital surveillance sites in all provinces. The report is based on data collected from 5 March 2020 to 26 November 2022.

#### Highlights

- There was a 45% decrease in the number of new admissions in week 47 2022 (230) compared to the number of admissions in week 46 2022 (420). Delays in reporting of admissions and deaths may affect the numbers reported in the most recent week.
- Gauteng and KwaZulu-Natal had the highest number of admissions in the past week (77/230, 33.48%), followed by Western Cape (36/230, 15.65%). Northern Cape had the lowest number of admissions (2/230, 0.87%). A small increase in admissions in KwaZulu-Natal private sector has been noted.
- The highest weekly incidence risk of COVID-19 admissions reported in week 47 of 2022 was in the ≥65-year age group (1.8 admissions per 100 000 persons), and the lowest weekly incidence risk were in <20 and 20-34-year age groups (0.2 admissions per 100 000 persons). An increased incidence risk of COVID-19 admissions has been observed in children <5 years since week 40.

## Methods

Data on hospitalisation was accessed from DATCOV, a hospital surveillance system for COVID-19 admissions, initiated on the 1 April 2020. A COVID-19 case was defined as a person with a positive reverse transcriptase polymerase chain reaction (RT-PCR) assay for SARS-CoV-2 or a person who had a positive SARS-CoV-2 antigen test who was admitted to hospital.

Data on SARS-CoV-2 cases diagnosed in public and private laboratories submitted to the NICD were reported from the line list on the NMCSS.

Case fatality ratio (CFR) was calculated for all closed cases, i.e., COVID-19 deaths divided by COVID-19 deaths plus COVID-19 discharges, excluding individuals who are still admitted in hospital. For the calculation of cumulative incidence risks, StatsSA mid-year population estimates for 2021 were utilised. For comparisons of change in admission, we used 14-day daily average admissions in the current 14-day period compared to the previous 14-day period.

Severity was defined as patients receiving oxygen or invasive ventilation, treated in high care or intensive care wards, developing acute respiratory distress syndrome, or died. While oxygen, ventilation, and ward of stay variables are updated daily for all admissions in the private sector, there may be delays with the data being updated in the public sector. Also, as patients remain in hospital their condition may change, and percentage of severity may change over time.

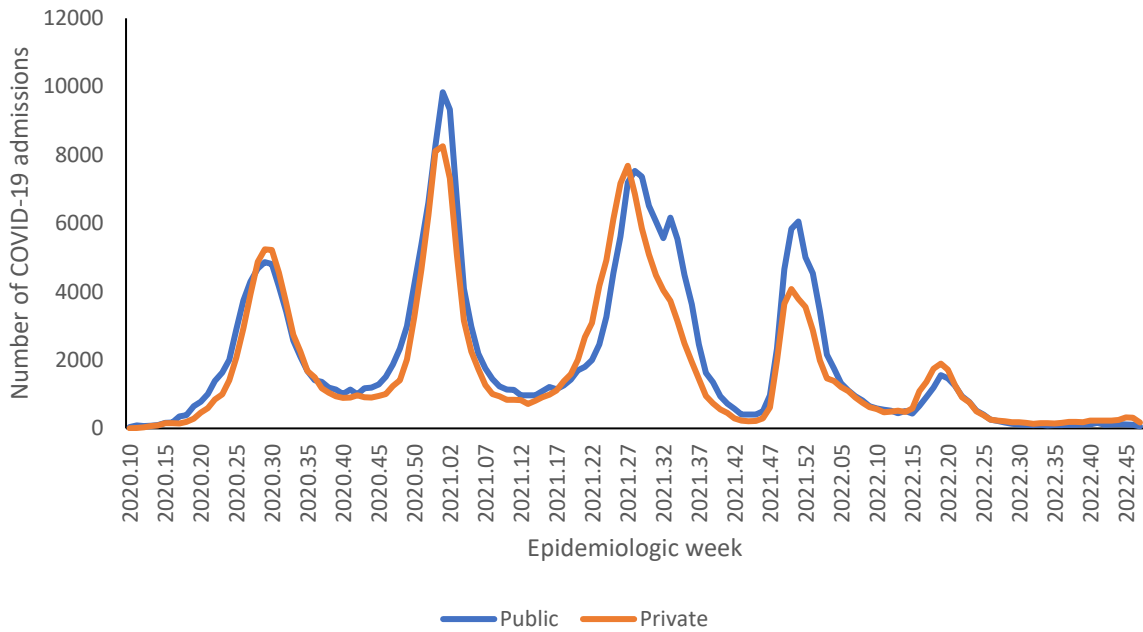
Data are submitted by public and private hospitals that have agreed to report COVID-19 admissions through DATCOV surveillance in all nine provinces of South Africa. On 15 July 2020, the National Health Council decided that all hospitals should report to DATCOV. As of 26 November 2022, a total of 667 facilities submitted data on hospitalised COVID-19 cases, 406 from public sector and 262 from private sector (Table 1). This reflects 100% coverage of all public and private hospitals that have had COVID-19 admissions. As new hospitals join the surveillance system, they have retrospectively captured all admissions recorded although there may be some backlogs in retrospective data capture.

**Table 1:** Number of hospitals reporting data on COVID-19 admissions by province and sector, South Africa, 5 March 2020-26 November 2022.

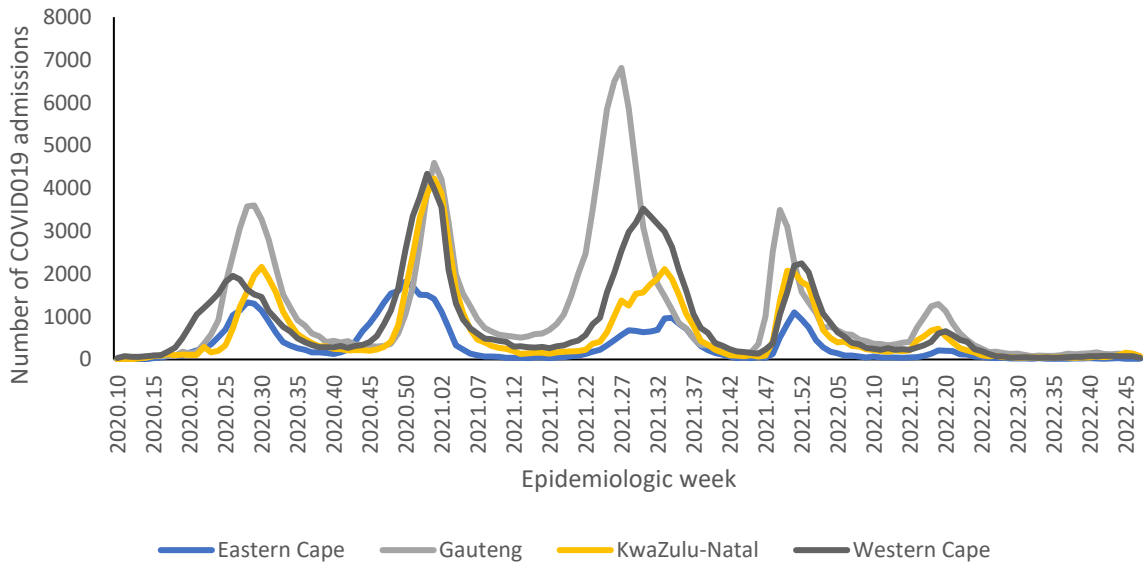
| Facilities reporting | Public | Private |
|----------------------|--------|---------|
| Eastern Cape         | 86     | 18      |
| Free State           | 34     | 20      |
| Gauteng              | 39     | 99      |
| KwaZulu-Natal        | 71     | 47      |
| Limpopo              | 41     | 7       |
| Mpumalanga           | 31     | 9       |
| North West           | 17     | 13      |
| Northern Cape        | 29     | 6       |
| Western Cape         | 59     | 43      |
| South Africa         | 406    | 262     |

## Results

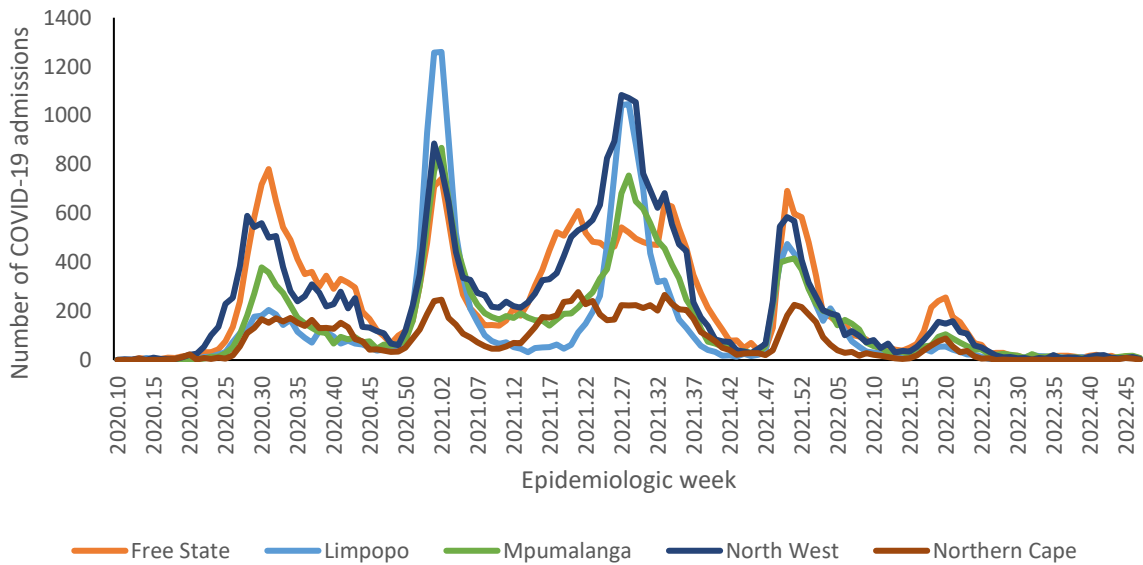
### Epidemiological and demographic trends in admissions



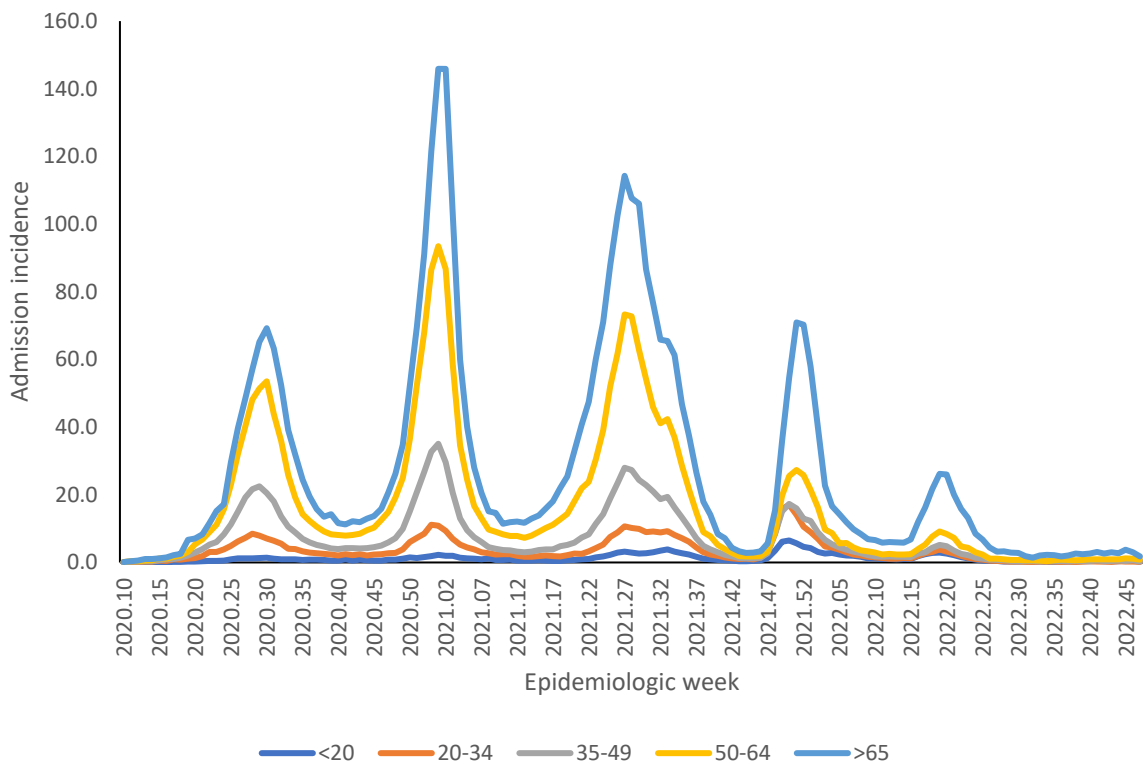
**Figure 1:** Number of reported COVID-19 admissions by health sector and epidemiologic week of diagnosis, South Africa, 5 March 2020-26 November 2022, N=545,505



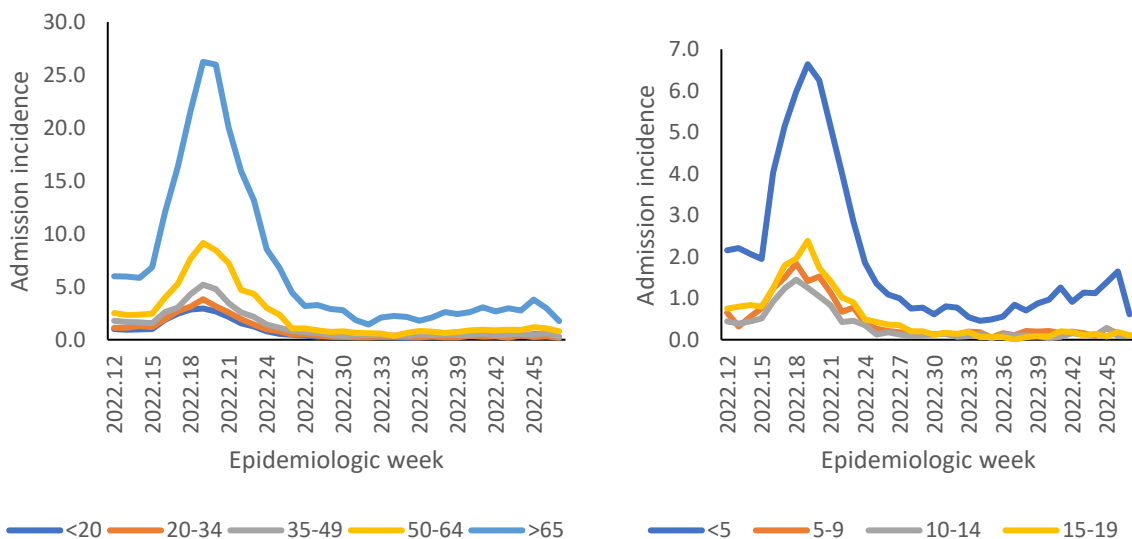
**Figure 2a:** Number of reported COVID-19 admissions, by provinces with highest admissions and epidemiologic week of diagnosis, South Africa, 5 March 2020-26 November 2022, N=545,505



**Figure 2b:** Number of reported COVID-19 admissions, by provinces with lowest admissions and epidemiologic week of diagnosis, South Africa, 5 March 2020-26 November 2022, N=545,505



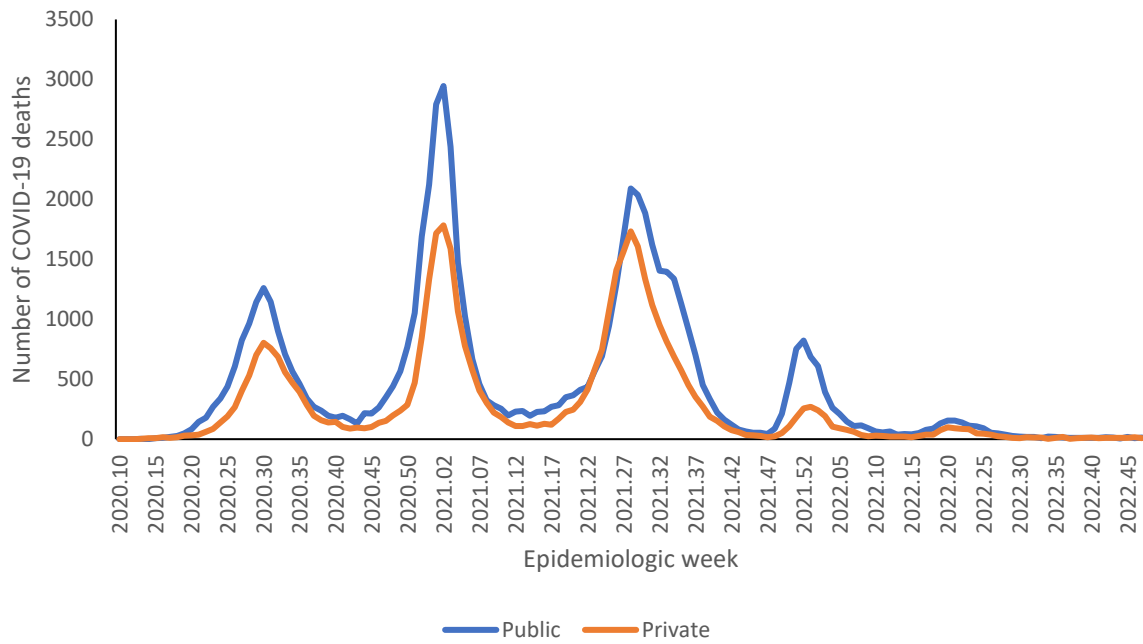
**Figure 3:** Incidence risk of COVID-19 admissions per 100,000 persons, by age group and epidemiologic week of diagnosis, South Africa, 5 March 2020-26 November 2022, N=545,505



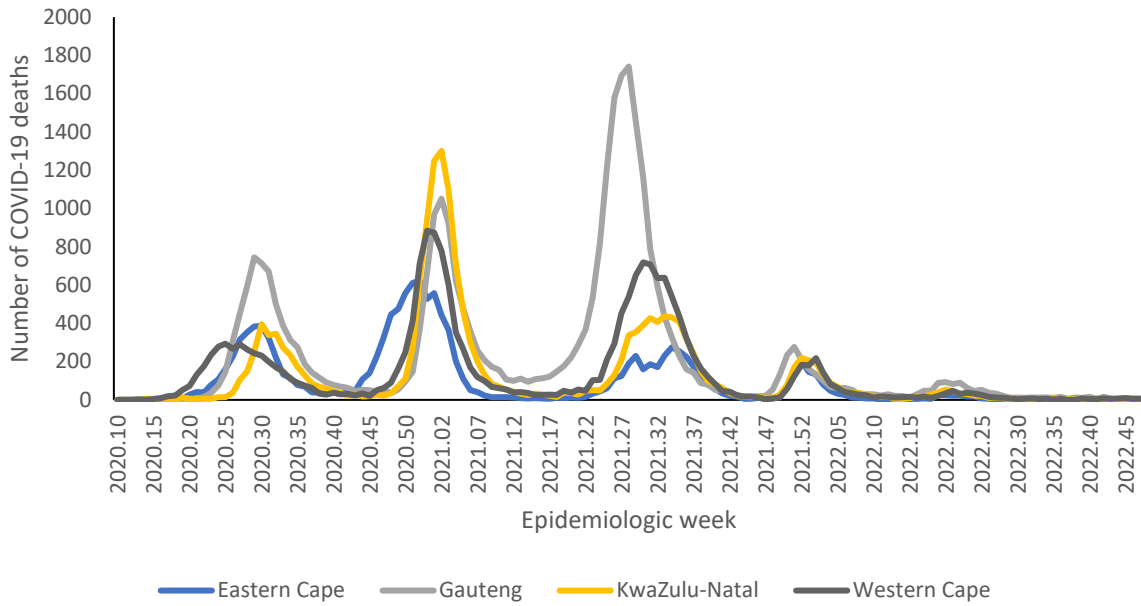
**Figure 4:** Incidence risk of COVID-19 admissions per 100,000 persons, by age group and epidemiologic week of diagnosis, South Africa, 19 March 2022-26 November 2022



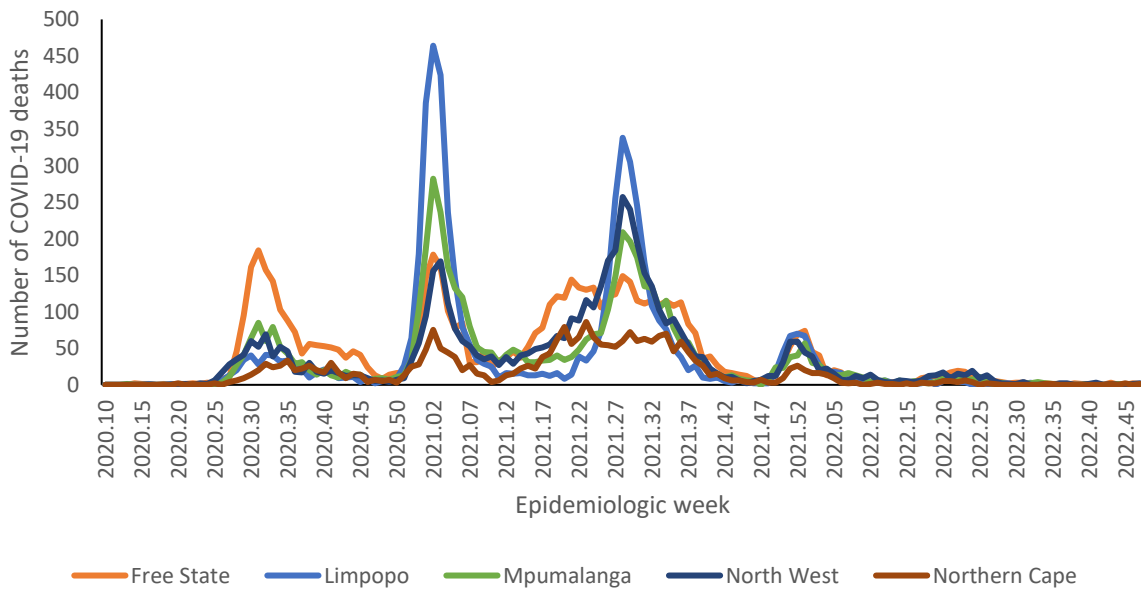
## Epidemiological and demographic trends in in-hospital mortality



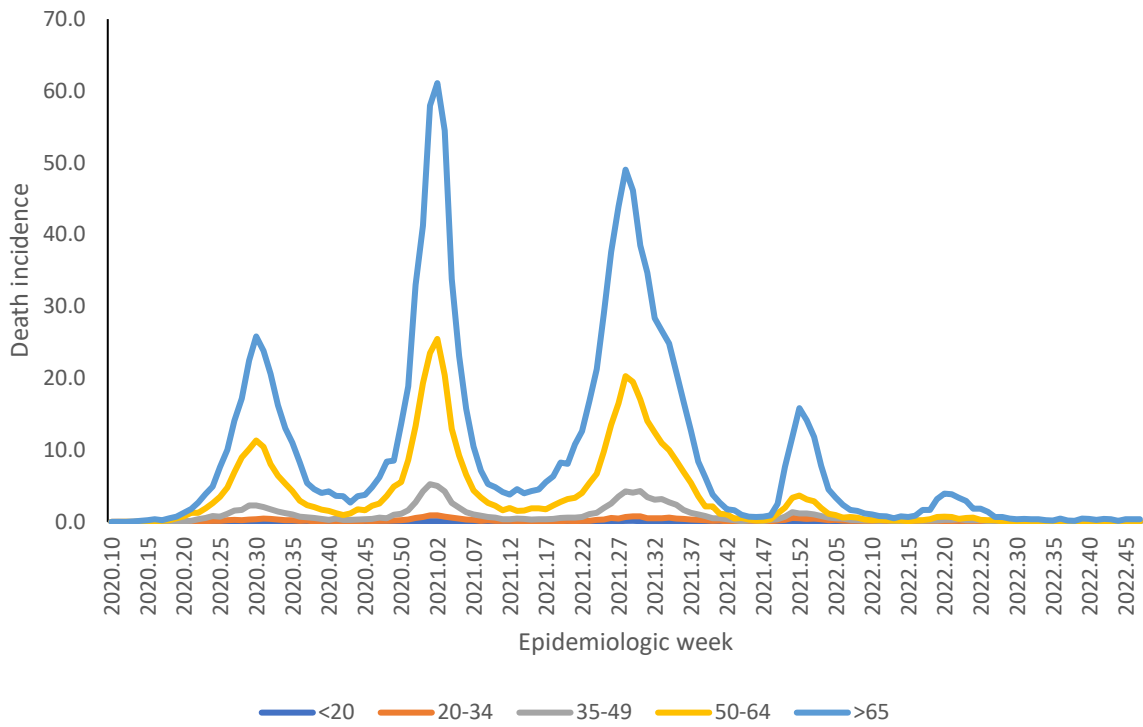
**Figure 5:** Number of reported COVID-19 in-hospital deaths, by health sector and epidemiologic week, South Africa, 5 March 2020-26 November 2022, N=104,541



**Figure 6a:** Number of reported COVID-19 in-hospital deaths, by province with highest deaths and epidemiologic week of death, South Africa, 5 March 2020-26 November 2022, N=104,541



**Figure 6b:** Number of reported COVID-19 in-hospital deaths, by province with lowest deaths and epidemiologic week of death, South Africa, 5 March 2020-26 November 2022, N=104,541



**Figure 7:** Incidence risk of COVID-19 in-hospital deaths per 100,000 persons, by age group and epidemiologic week of death, South Africa, 5 March 2020-26 November 2022, N=104,541



## Provincial trends

**Table 2:** Number and cumulative incidence risk of COVID-19 hospitalisations and in-hospital deaths per 100,000 persons by province, South Africa, 5 March 2020-26 November 2022.

| Province            | Provincial Population mid 2020* | Cumulative admissions | Cumulative incidence risk of admissions / 100,000 | Cumulative deaths | Cumulative incidence risk of deaths / 100,000 |
|---------------------|---------------------------------|-----------------------|---|-------------------|---|
| Eastern Cape        | 6676590                         | 48942                 | 733.0   | 13323             | 199.5   |
| Free State          | 2932441                         | 32765                 | 1117.3  | 6159              | 210.0   |
| Gauteng             | 15810388                        | 161 448               | 1021.2  | 30717             | 194.3   |
| KwaZulu-Natal       | 11513575                        | 90081                 | 782.4   | 17640             | 153.2   |
| Limpopo             | 5926724                         | 21256                 | 358.6   | 5331              | 89.9  |
| Mpumalanga          | 4743584                         | 23136                 | 487.7   | 4931              | 104.0   |
| North West          | 4122854                         | 34 303                | 832.0   | 5020              | 121.8   |
| Northern Cape       | 1303047                         | 11 938                | 916.2   | 2462              | 188.9   |
| Western Cape        | 7113776                         | 121 636               | 1709.9  | 18958             | 266.5   |
| <b>South Africa</b> | <b>60142978</b>                 | <b>545 505</b>        | <b>907.0</b>                                      | <b>104 541</b>    | <b>173.8</b>                                  |

\*StatsSA mid-year population estimates 2020

**Table 3:** Previous 14 days and current 14 days daily average COVID-19 admissions and deaths and percentage changes, South Africa, 29 October-26 November 2022.

| Province      | Hospital admissions                 |                                    | Percentage change in admissions | Hospital deaths                 |                                | Percentage change in deaths |
|---------------|-------------------------------------|------------------------------------|---------------------------------|---------------------------------|--------------------------------|-----------------------------|
|               | Previous 14 days average admissions | Current 14 days average admissions |                                 | Previous 14 days average deaths | Current 14 days average deaths |                             |
| Eastern Cape  | 3.29                                | 2.07                               | -36.96                          | 0.71                            | 0.29                           | -60.00                      |
| Free State    | 1.57                                | 1.57                               | 0.00                            | 0.00                            | 0.21                           | 0.00                        |
| Gauteng       | 17.79                               | 15.00                              | -15.66                          | 0.64                            | 0.86                           | 33.33                       |
| KwaZulu-Natal | 18.29                               | 14.93                              | -18.36                          | 0.50                            | 0.79                           | 57.14                       |
| Limpopo       | 1.43                                | 1.29                               | -10.00                          | 0.00                            | 0.00                           | 0.00                        |
| Mpumalanga    | 2.07                                | 1.86                               | -10.34                          | 0.07                            | 0.07                           | 0.00                        |
| North West    | 1.07                                | 1.21                               | 13.33                           | 0.00                            | 0.21                           | 0.00                        |
| Northern Cape | 0.86                                | 0.57                               | -33.33                          | 0.14                            | 0.07                           | -50.00                      |
| Western Cape  | 11.00                               | 7.86                               | -28.57                          | 1.21                            | 0.79                           | -35.29                      |

\* Reporting of new admissions in the most recent week may be delayed

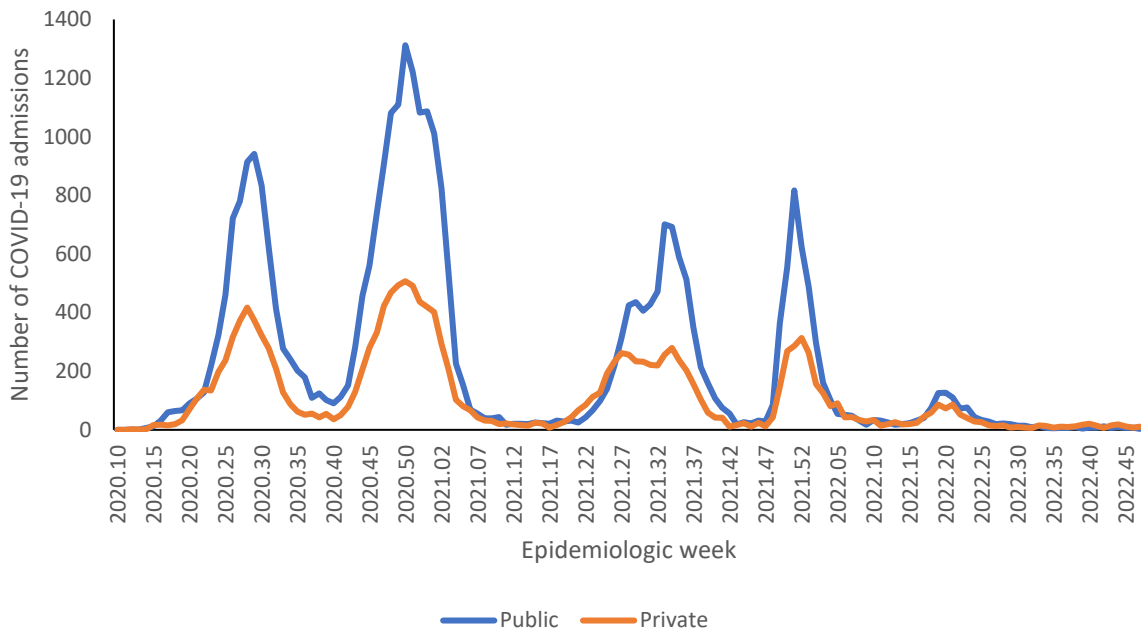


**Table 4:** Previous 7 days and current 7 days daily average COVID-19 admissions and deaths and percentage changes, South Africa, 12 November-26 November 2022.

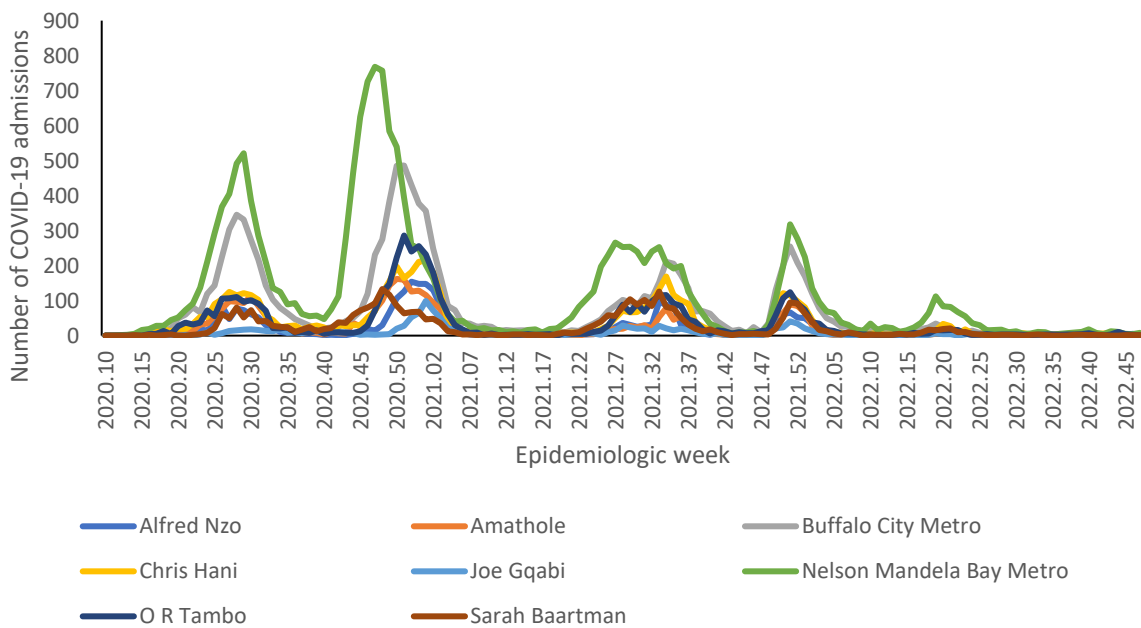
| Province      | Hospital admissions                |                                   | Percentage change in admissions | Hospital deaths                |                               | Percentage change in deaths |
|---------------|------------------------------------|-----------------------------------|---------------------------------|--------------------------------|-------------------------------|-----------------------------|
|               | Previous 7 days average admissions | Current 7 days average admissions |                                 | Previous 7 days average deaths | Current 7 days average deaths |                             |
| Eastern Cape  | 2.14                               | 2.00                              | -6.67                           | 0.29                           | 0.29                          | 0.00                        |
| Free State    | 2.14                               | 1.00                              | -53.33                          | 0.29                           | 0.14                          | -50.00                      |
| Gauteng       | 19.00                              | 11.00                             | -42.11                          | 0.71                           | 1.00                          | 40.00                       |
| KwaZulu-Natal | 18.86                              | 11.00                             | -41.67                          | 1.14                           | 0.43                          | -62.50                      |
| Limpopo       | 2.00                               | 0.57                              | -71.43                          | 0.00                           | 0.00                          | 0.00                        |
| Mpumalanga    | 2.57                               | 1.14                              | -55.56                          | 0.14                           | 0.00                          | -100.00                     |
| North West    | 1.71                               | 0.71                              | -58.33                          | 0.14                           | 0.29                          | 100.00                      |
| Northern Cape | 0.86                               | 0.29                              | -66.67                          | 0.00                           | 0.14                          | 0.00                        |
| Western Cape  | 10.57                              | 5.14                              | -51.35                          | 0.71                           | 0.86                          | 20.00                       |

\* Reporting of new admissions in the most recent week may be delayed

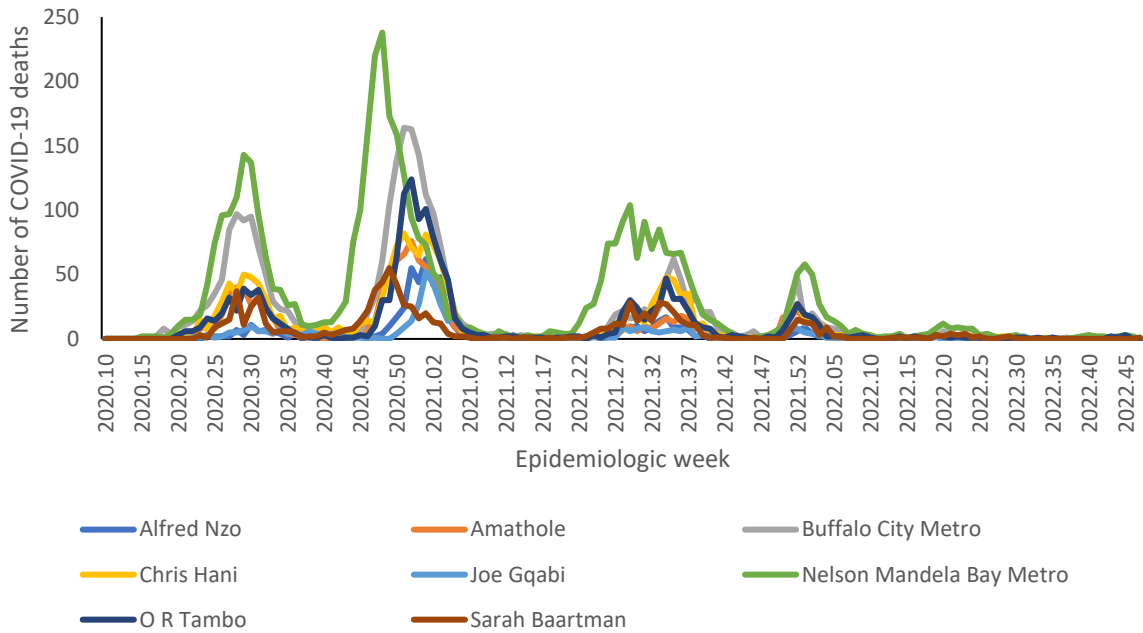
## Eastern Cape



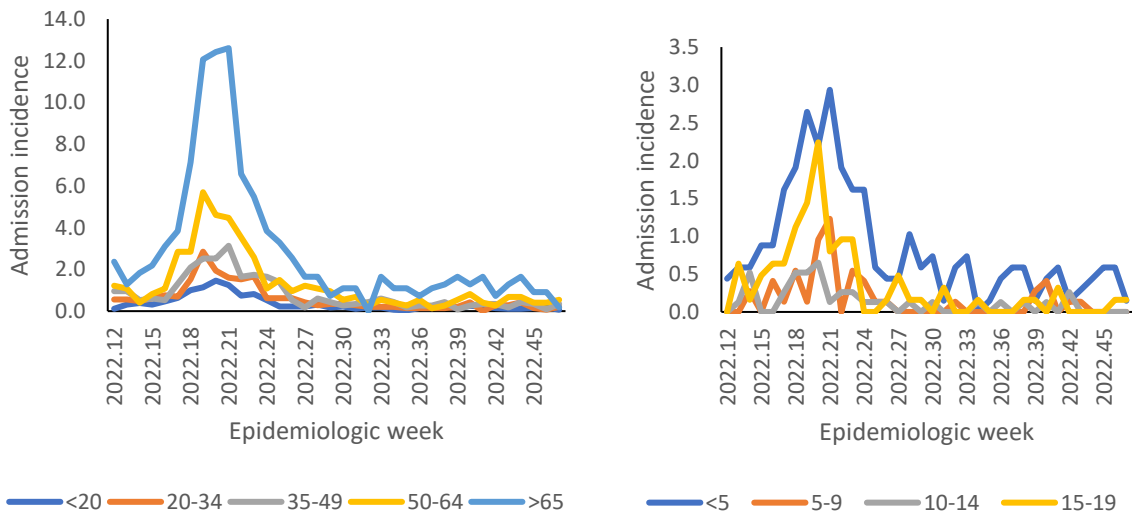
**Figure 8:** Number of reported COVID-19 admissions by health sector and epidemiologic week of diagnosis, Eastern Cape, 5 March 2020-26 November 2022, N=48,942



**Figure 9:** Number of reported COVID-19 admissions, by district and epidemiologic week, Eastern Cape, 5 March 2020-26 November 2022, N=48,942



**Figure 10:** Number of reported COVID-19 in-hospital deaths, by district and epidemiologic week, Eastern Cape, 5 March 2020-26 November 2022, N=13,323



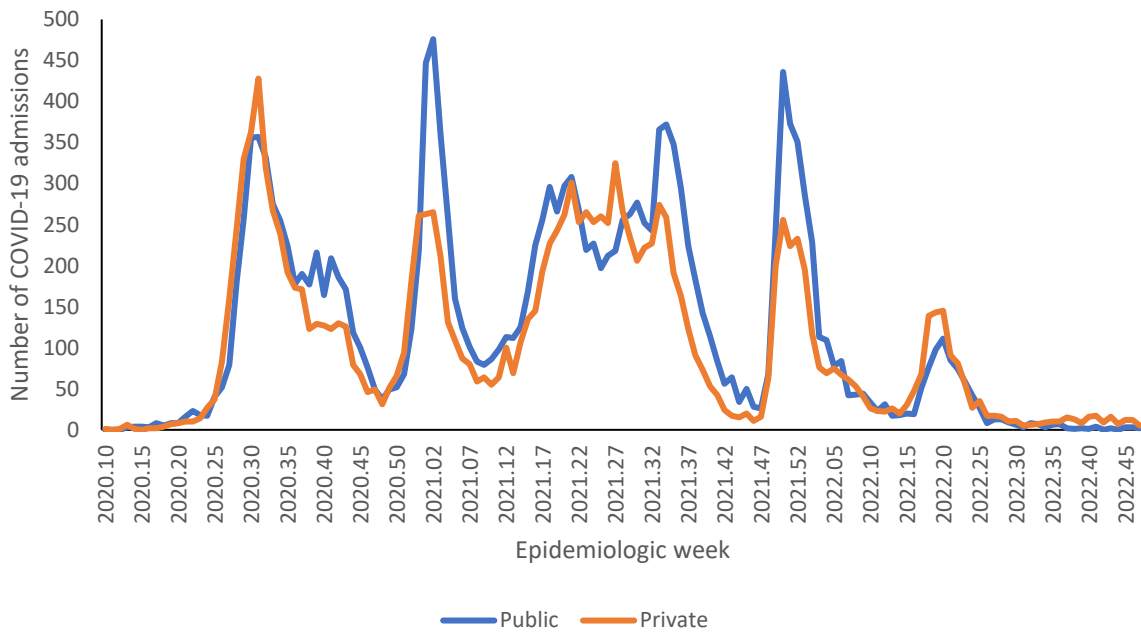
**Figure 11:** Incidence risk of COVID-19 admissions per 100,000 persons by age group and epidemiologic week of diagnosis, Eastern Cape, 19 March 2022-26 November 2022



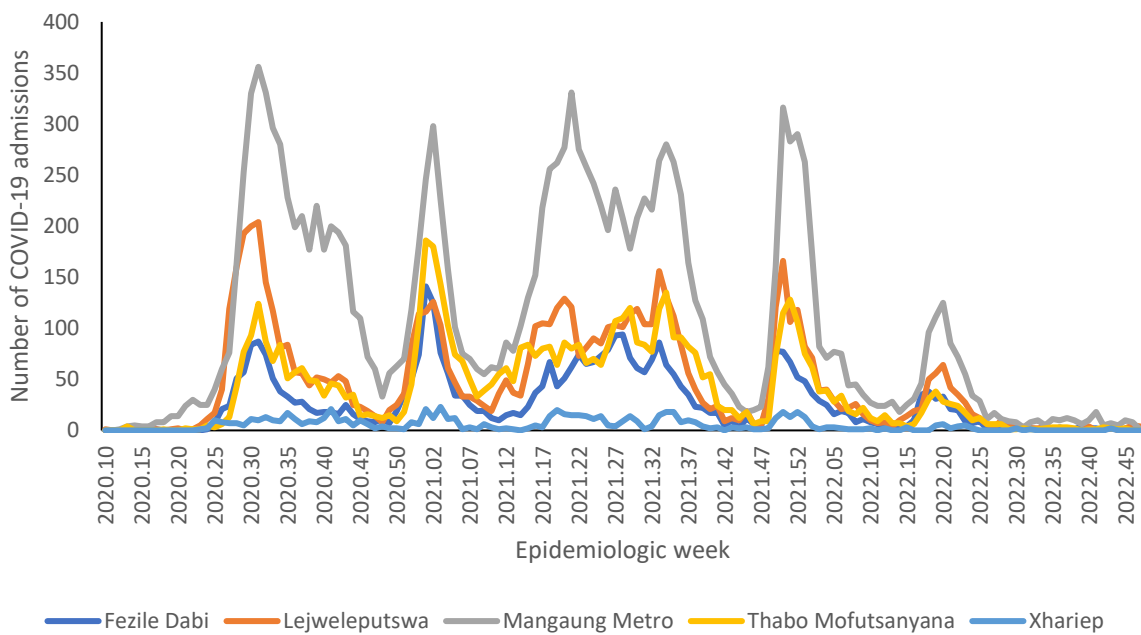
**Table 5:** Previous 14 days and current 14 days average COVID-19 admissions and deaths and percentage changes, Eastern Cape, 29 October-26 November 2022.

| <b>District</b>    | <b>Previous 14 days admissions average</b> | <b>Current 14 days admissions average</b> | <b>Percentage change in admissions</b> | <b>Previous 14 days deaths average</b> | <b>Current 14 days deaths average</b> | <b>Percentage change in deaths</b> |
|--------------------|--|---|--|--|---------------------------------------|------------------------------------|
| Alfred Nzo         | 0.36                                       | 0.50                                      | 40.00                                  | 0.00                                   | 0.07                                  | 0.00                               |
| Amathole           | 0.07                                       | 0.00                                      | -100.00                                | 0.00                                   | 0.00                                  | 0.00                               |
| Buffalo City Metro | 0.29                                       | 0.36                                      | 25.00                                  | 0.00                                   | 0.00                                  | 0.00                               |
| Chris Hani         | 0.07                                       | 0.00                                      | -100.00                                | 0.07                                   | 0.00                                  | -100.00                            |
| Joe Gqabi          | 0.21                                       | 0.00                                      | -100.00                                | 0.00                                   | 0.00                                  | 0.00                               |
| Nelson Mandela Bay | 1.14                                       | 0.86                                      | -25.00                                 | 0.36                                   | 0.14                                  | -60.00                             |
| O R Tambo          | 1.07                                       | 0.21                                      | -80.00                                 | 0.29                                   | 0.00                                  | -100.00                            |
| Sarah Baartman     | 0.07                                       | 0.14                                      | 100.00                                 | 0.00                                   | 0.07                                  | 0.00                               |

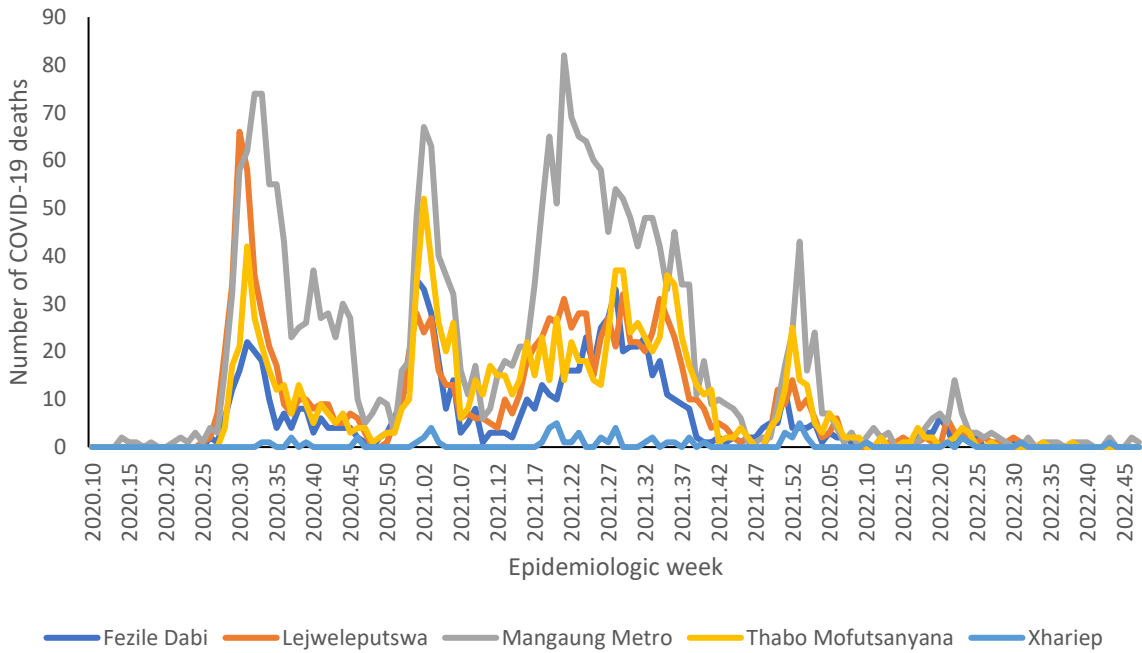
## Free State



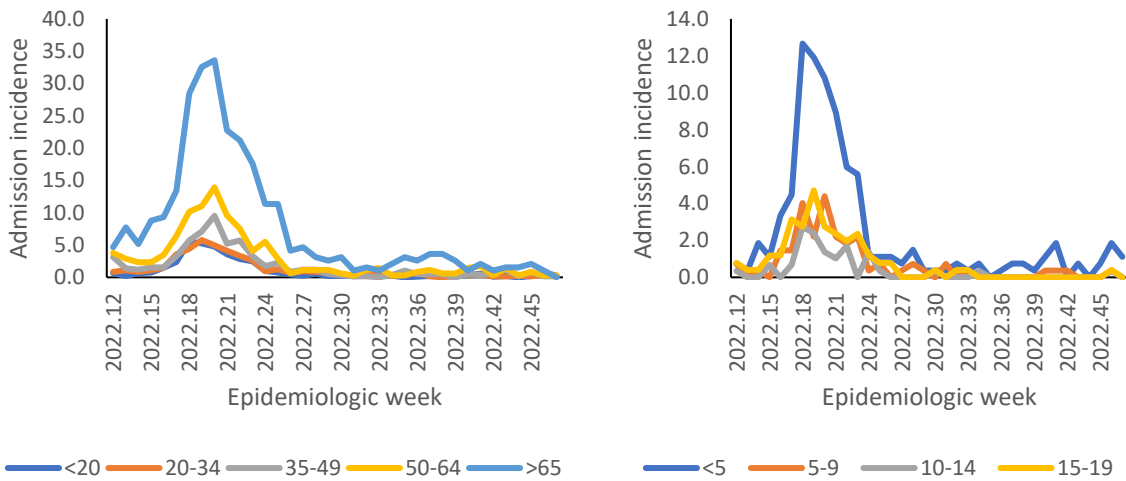
**Figure 12:** Number of reported COVID-19 admissions by health sector and epidemiologic week of diagnosis, Free State, 5 March 2020-26 November 2022, N=32,765



**Figure 13:** Number of reported COVID-19 admissions, by district and epidemiologic week, Free State, 5 March 2020-26 November 2022, N=32,765



**Figure 14:** Number of reported COVID-19 in-hospital deaths, by district and epidemiologic week, Free State, 5 March 2020-26 November 2022, N=6,159



**Figure 15:** Incidence risk of COVID-19 admissions per 100,000 persons by age group and epidemiologic week of diagnosis, Free State, 19 March 2022- 26 November 2022



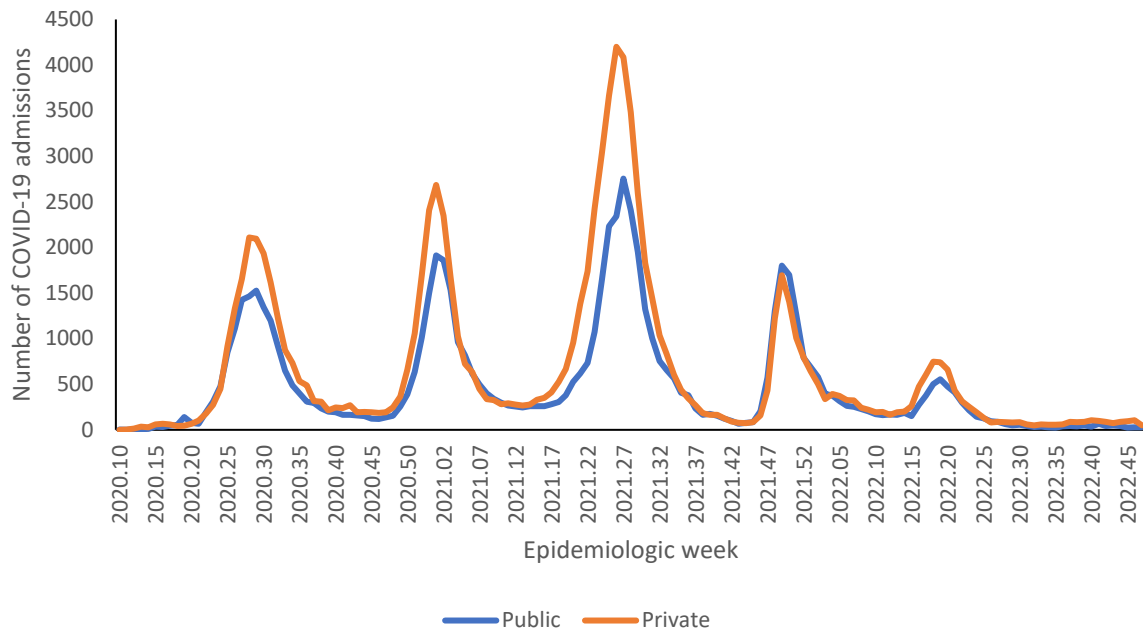
**Table 6:** Previous 14 days and current 14 days average COVID-19 admissions and deaths and percentage changes, Free State, 29 October-26 November 2022.

| District           | Previous 14 days admissions average | Current 14 days admissions average | Percentage change in admissions | Previous 14 days deaths average | Current 14 days deaths average | Percentage change in deaths |
|--------------------|-------------------------------------|------------------------------------|---------------------------------|---------------------------------|--------------------------------|-----------------------------|
| Fezile Dabi        | 0.14                                | 0.29                               | 100.00                          | 0.00                            | 0.00                           | 0.00                        |
| Lejweleputswa      | 0.14                                | 0.64                               | 350.00                          | 0.00                            | 0.00                           | 0.00                        |
| Mangaung Metro     | 1.07                                | 0.64                               | -40.00                          | 0.00                            | 0.21                           | 0.00                        |
| Thabo Mofutsanyana | 0.21                                | 0.00                               | -100.00                         | 0.00                            | 0.00                           | 0.00                        |
| Xhariep            | 0.00                                | 0.00                               | 0.00                            | 0.00                            | 0.00                           | 0.00                        |

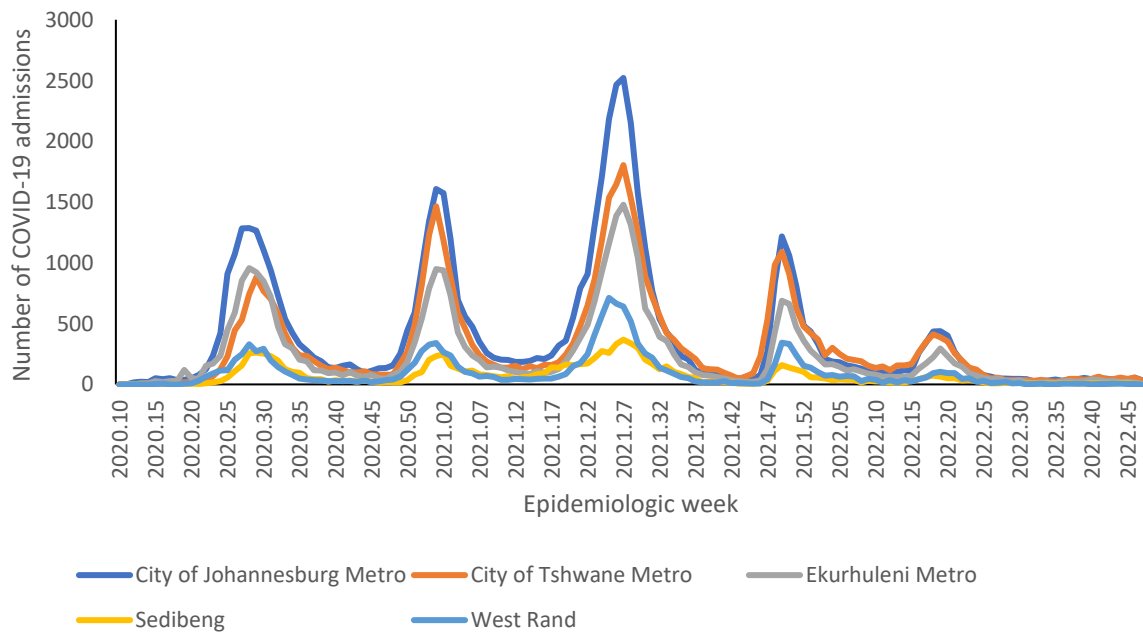




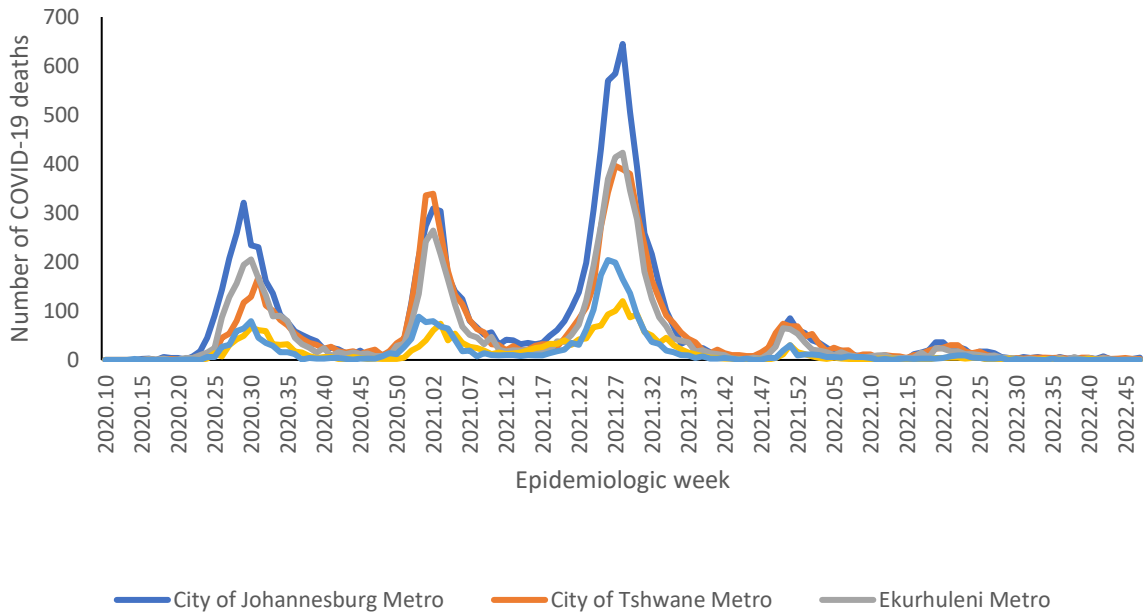
## Gauteng



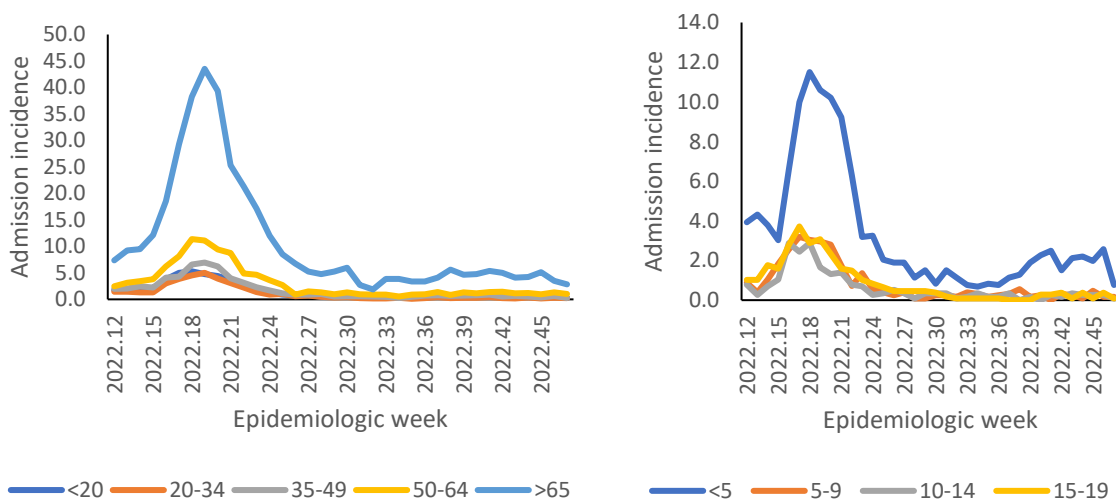
**Figure 16:** Number of reported COVID-19 admissions by health sector and epidemiologic week of diagnosis, Gauteng, 5 March 2020-26 November 2022, N=161,448



**Figure 17:** Number of reported COVID-19 admissions, by district and epidemiologic week, Gauteng, 5 March 2020-26 November 2022, N=161,448



**Figure 18:** Number of reported COVID-19 in-hospital deaths, by district and epidemiologic week, Gauteng, 5 March 2020-26 November 2022, N=30,717



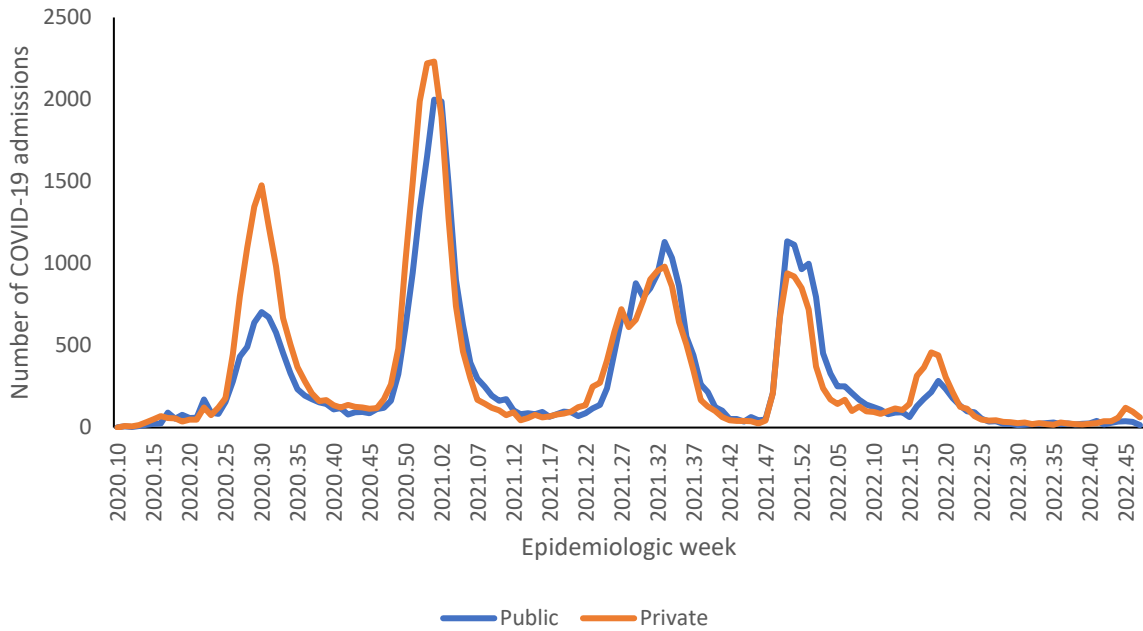
**Figure 19:** Incidence risk of COVID-19 admissions per 100,000 persons, per age group and epidemiologic week of diagnosis, Gauteng, 19 March 2022- 26 November 2022



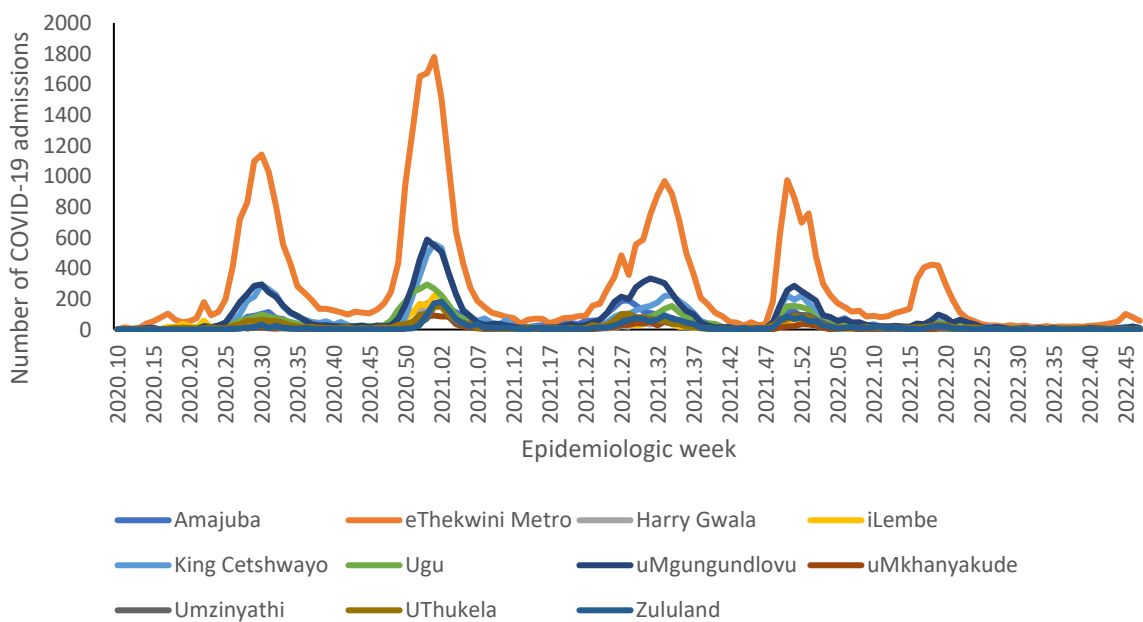
**Table 7:** Previous 14 days and current 14 days average COVID-19 admissions and deaths and percentage changes, Gauteng, 29 October-26 November 2022.

| District                   | Previous 14 days admissions average | Current 14 days admissions average | Percentage change in admissions | Previous 14 days deaths average | Current 14 days deaths average | Percentage change in deaths |
|----------------------------|-------------------------------------|------------------------------------|---------------------------------|---------------------------------|--------------------------------|-----------------------------|
| City of Johannesburg Metro | 5.50                                | 6.36                               | 15.58                           | 0.07                            | 0.50                           | 600.00                      |
| City of Tshwane Metro      | 7.21                                | 6.14                               | -14.85                          | 0.50                            | 0.29                           | -42.86                      |
| Ekurhuleni Metro           | 3.00                                | 1.50                               | -50.00                          | 0.07                            | 0.07                           | 0.00                        |
| Sedibeng                   | 1.36                                | 0.71                               | -47.37                          | 0.00                            | 0.00                           | 0.00                        |
| West Rand                  | 0.71                                | 0.29                               | -60.00                          | 0.00                            | 0.00                           | 0.00                        |

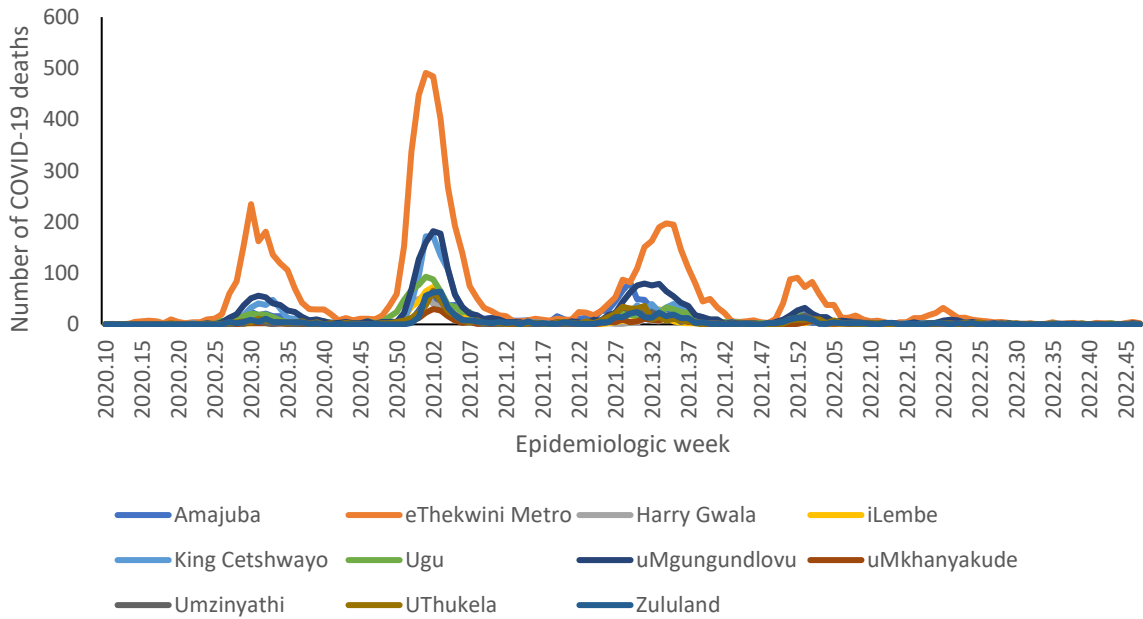
**KwaZulu-Natal**



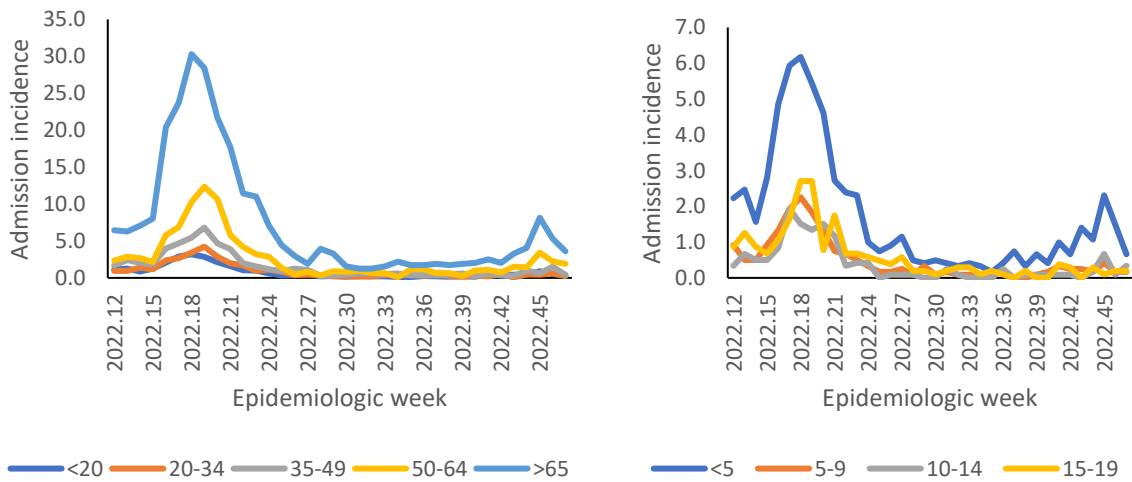
**Figure 20:** Number of reported COVID-19 admissions by health sector and epidemiologic week of diagnosis, KwaZulu-Natal, 5 March 2020-26 November 2022, N=90,081



**Figure 21:** Number of reported COVID-19 admissions, by district and epidemiologic week, KwaZulu-Natal, 5 March 2020-26 November 2022, N=90,081



**Figure 22:** Number of reported COVID-19 in-hospital deaths, by district and epidemiologic week, KwaZulu-Natal, 5 March 2020-26 November 2022, N=17,640



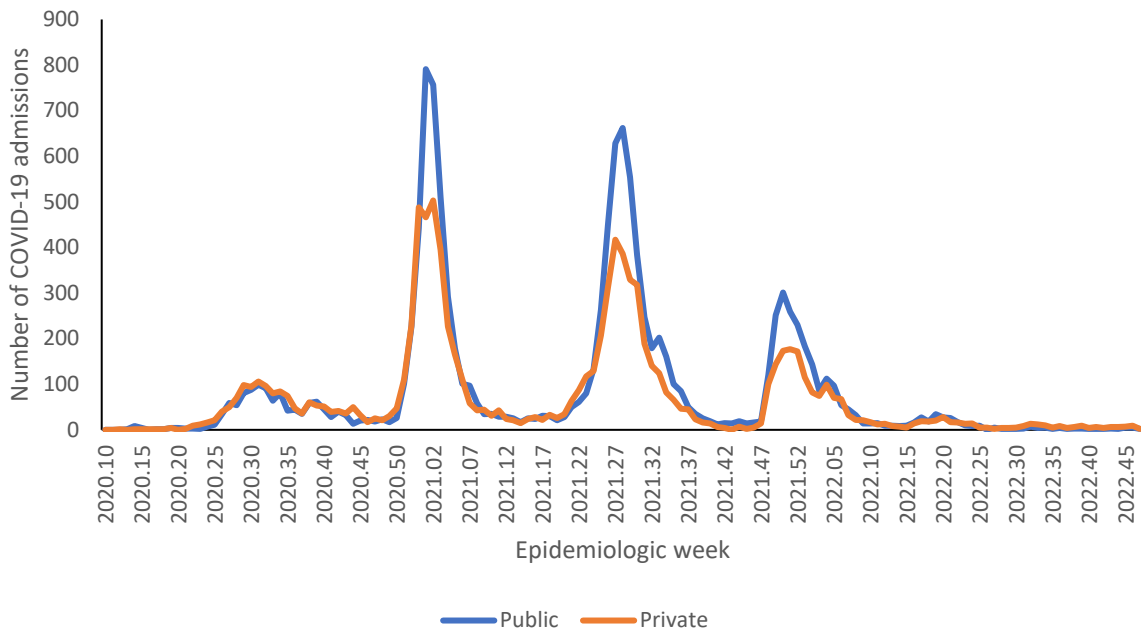
**Figure 23:** Incidence risk of COVID-19 admissions per 100,000 persons, by age group and epidemiologic week of diagnosis, KwaZulu-Natal, 19 March 2022- 26 November 2022

**Table 8:** Previous 14 days and current 14 days average COVID-19 admissions and deaths and percentage changes, KwaZulu-Natal, 29 October-26 November 2022.

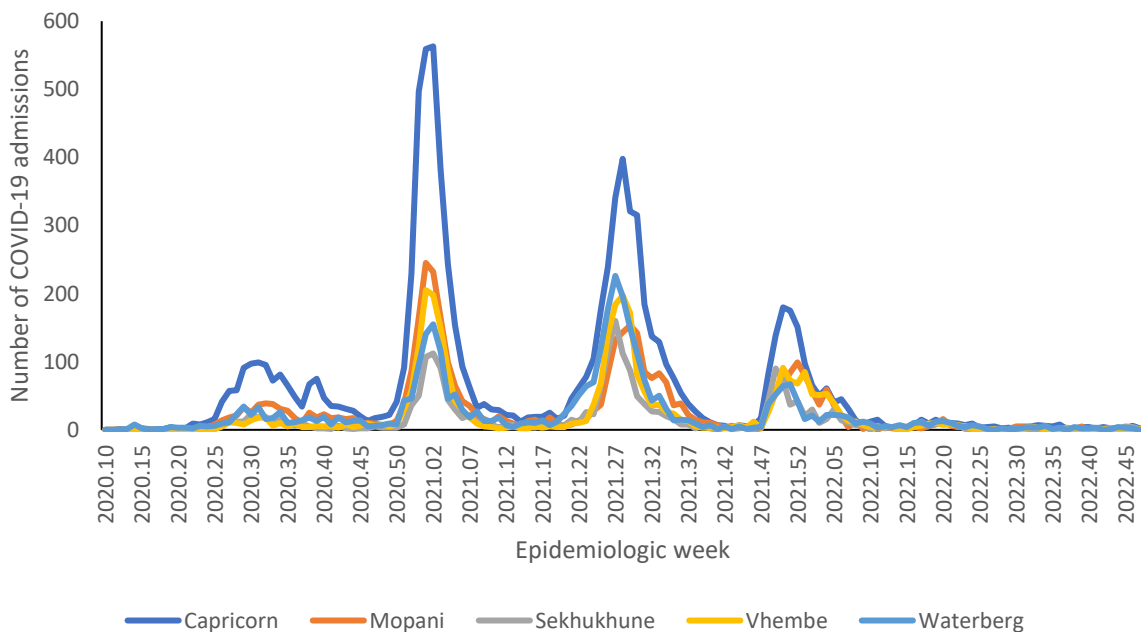
| District        | Previous 14 days admissions average | Current 14 days admissions average | Percentage change in admissions | Previous 14 days deaths average | Current 14 days deaths average | Percentage change in deaths |
|-----------------|-------------------------------------|------------------------------------|---------------------------------|---------------------------------|--------------------------------|-----------------------------|
| Amajuba         | 0.36                                | 0.14                               | -60.00                          | 0.07                            | 0.00                           | -100.00                     |
| eThekweni Metro | 11.07                               | 9.79                               | -11.61                          | 0.14                            | 0.50                           | 250.00                      |
| Harry Gwala     | 0.36                                | 0.14                               | -60.00                          | 0.00                            | 0.00                           | 0.00                        |
| iLembe          | 0.50                                | 0.43                               | -14.29                          | 0.00                            | 0.00                           | 0.00                        |
| King Cetshwayo  | 2.07                                | 1.36                               | -34.48                          | 0.07                            | 0.07                           | 0.00                        |
| Ugu             | 1.07                                | 0.50                               | -53.33                          | 0.07                            | 0.00                           | -100.00                     |
| uMgungundlovu   | 1.43                                | 2.07                               | 45.00                           | 0.00                            | 0.21                           | 0.00                        |
| uMkhanyakude    | 0.29                                | 0.00                               | -100.00                         | 0.07                            | 0.00                           | -100.00                     |
| Umzinyathi      | 0.57                                | 0.14                               | -75.00                          | 0.07                            | 0.00                           | -100.00                     |
| UThukela        | 0.43                                | 0.36                               | -16.67                          | 0.00                            | 0.00                           | 0.00                        |
| Zululand        | 0.14                                | 0.00                               | -100.00                         | 0.00                            | 0.00                           | 0.00                        |



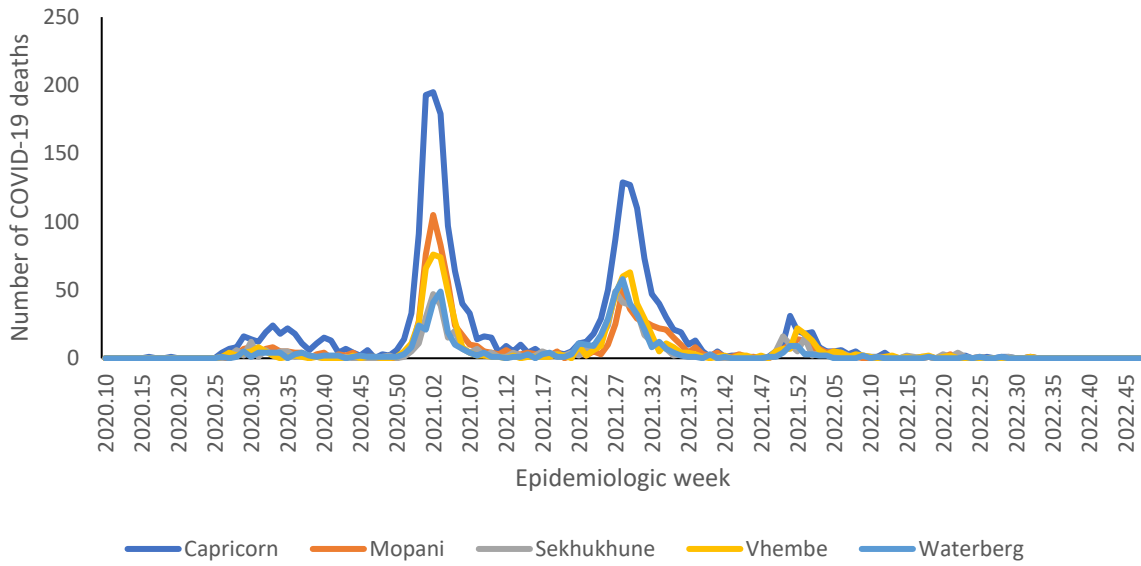
## Limpopo



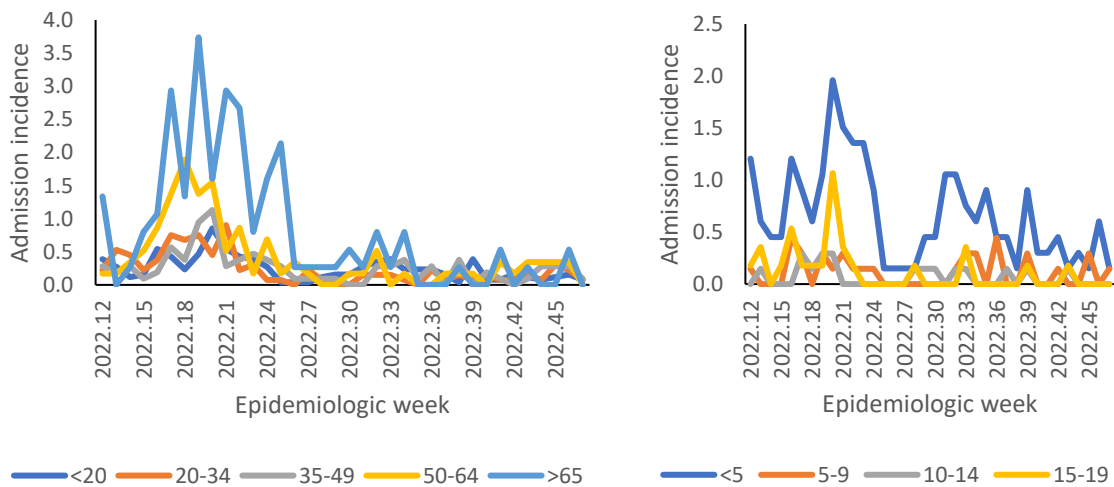
**Figure 24:** Number of reported COVID-19 admissions by health sector and epidemiologic week of diagnosis, Limpopo, 5 March 2020-26 November 2022, N=21,256



**Figure 25:** Number of reported COVID-19 admissions, by district and epidemiologic week, Limpopo, 5 March 2020-26 November 2022, N=21,256



**Figure 26:** Number of reported COVID-19 in-hospital deaths, by district and epidemiologic week, Limpopo, 5 March 2020-26 November 2022, N=5,331



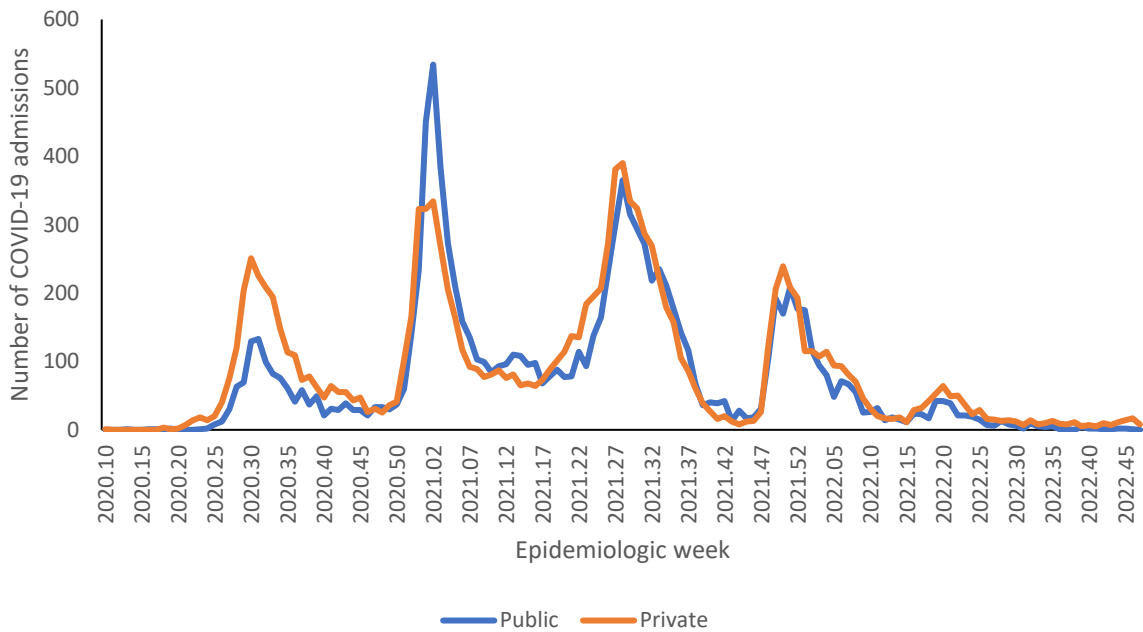
**Figure 27:** Incidence risk of COVID-19 admissions per 100,000 persons, by age group and epidemiologic week of diagnosis, Limpopo, 19 March 2022-26 November 2022



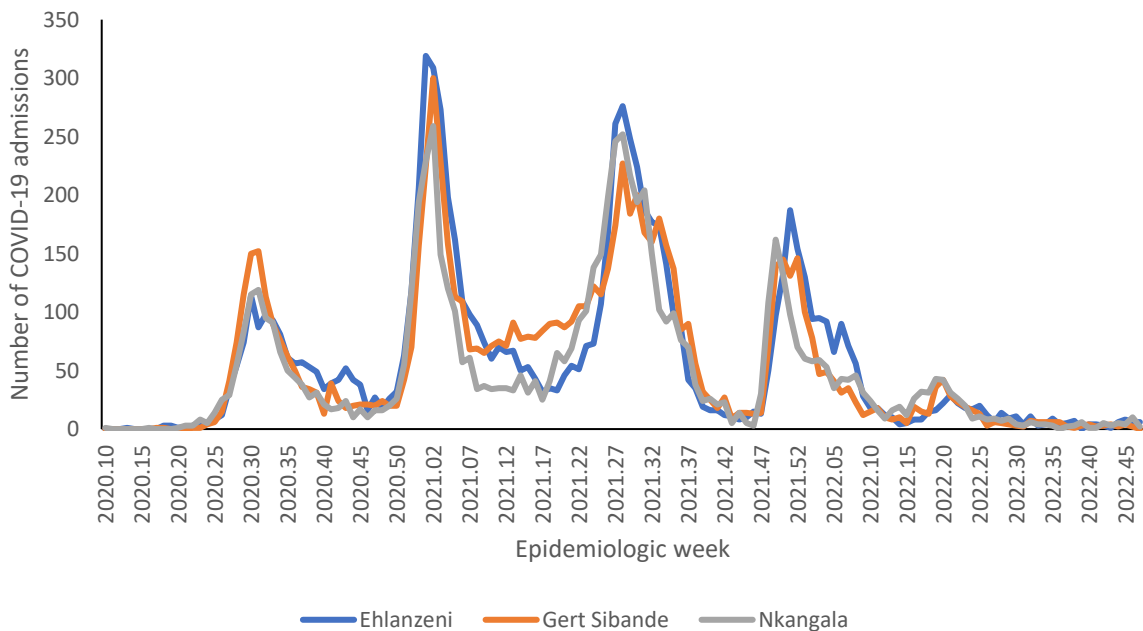
**Table 9:** Previous 14 days and current 14 days average COVID-19 admissions and deaths and percentage changes, Limpopo, 29 October-26 November 2022.

| District   | Previous 14 days admissions average | Current 14 days admissions average | Percentage change in admissions | Previous 14 days deaths average | Current 14 days deaths average | Percentage change in deaths |
|------------|-------------------------------------|------------------------------------|---------------------------------|---------------------------------|--------------------------------|-----------------------------|
| Capricorn  | 0.36                                | 0.57                               | 60.00                           | 0.00                            | 0.00                           | 0.00                        |
| Mopani     | 0.14                                | 0.14                               | 0.00                            | 0.00                            | 0.00                           | 0.00                        |
| Sekhukhune | 0.43                                | 0.36                               | -16.67                          | 0.00                            | 0.00                           | 0.00                        |
| Vhembe     | 0.00                                | 0.07                               | 0.00                            | 0.00                            | 0.00                           | 0.00                        |
| Waterberg  | 0.50                                | 0.14                               | -71.43                          | 0.00                            | 0.00                           | 0.00                        |

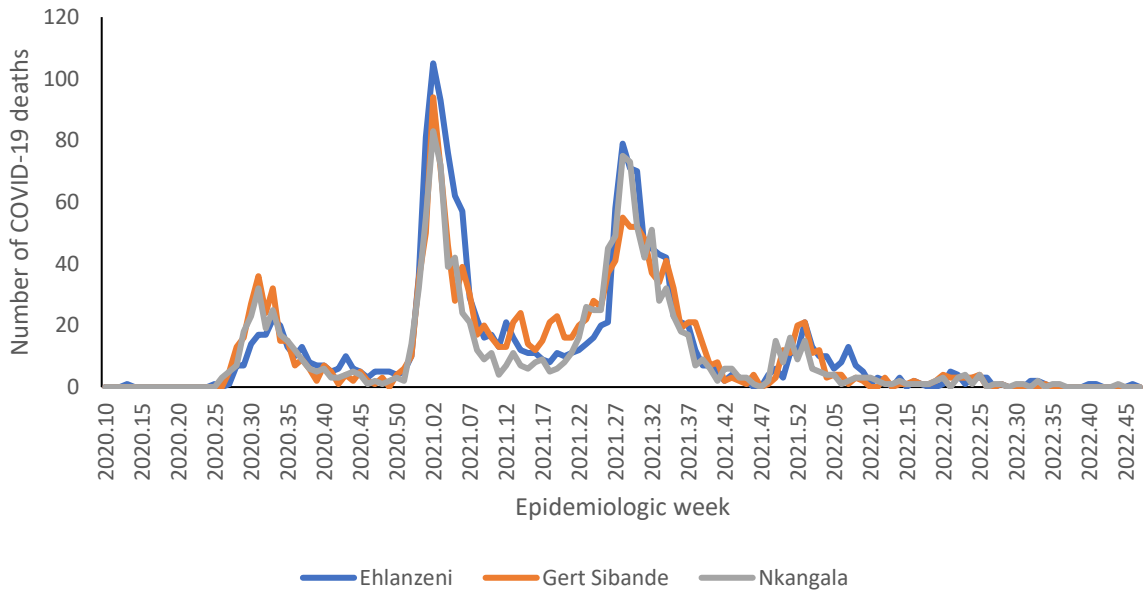
## Mpumalanga



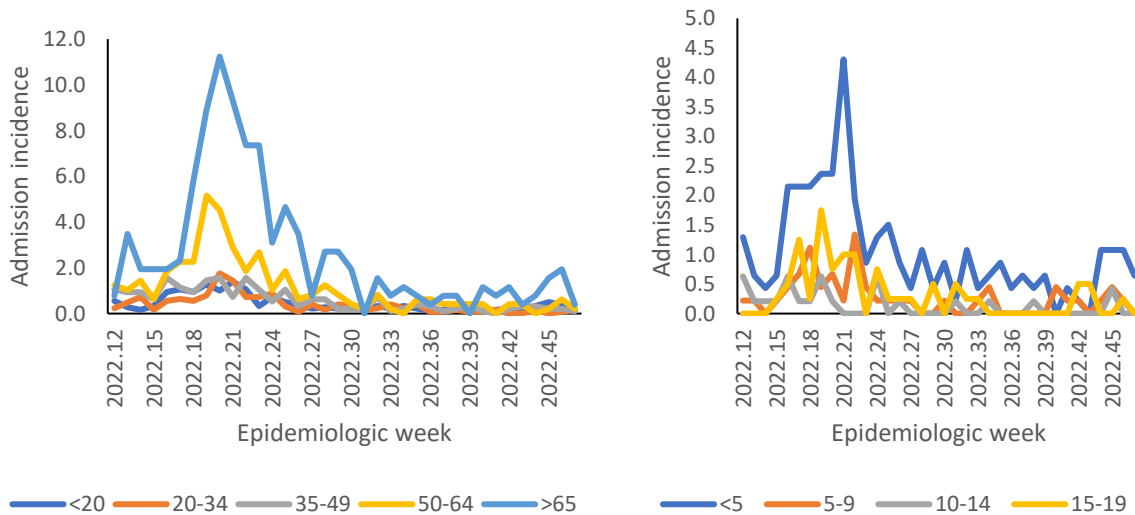
**Figure 28:** Number of reported COVID-19 admissions by health sector and epidemiologic week of diagnosis, Mpumalanga, 5 March 2020-26 November 2022, N=23,136



**Figure 29:** Number of reported COVID-19 admissions, by district and epidemiologic week, Mpumalanga, 5 March 2020-26 November 2022, N=23,136



**Figure 30:** Number of reported COVID-19 in-hospital deaths, by district and epidemiologic week, Mpumalanga, 5 March 2020-26 November 2022, N=4,931



**Figure 31:** Incidence risk of COVID-19 admissions per 100,000 persons, by age group and epidemiologic week of diagnosis, Mpumalanga, 19 March 2022-26 November 2022

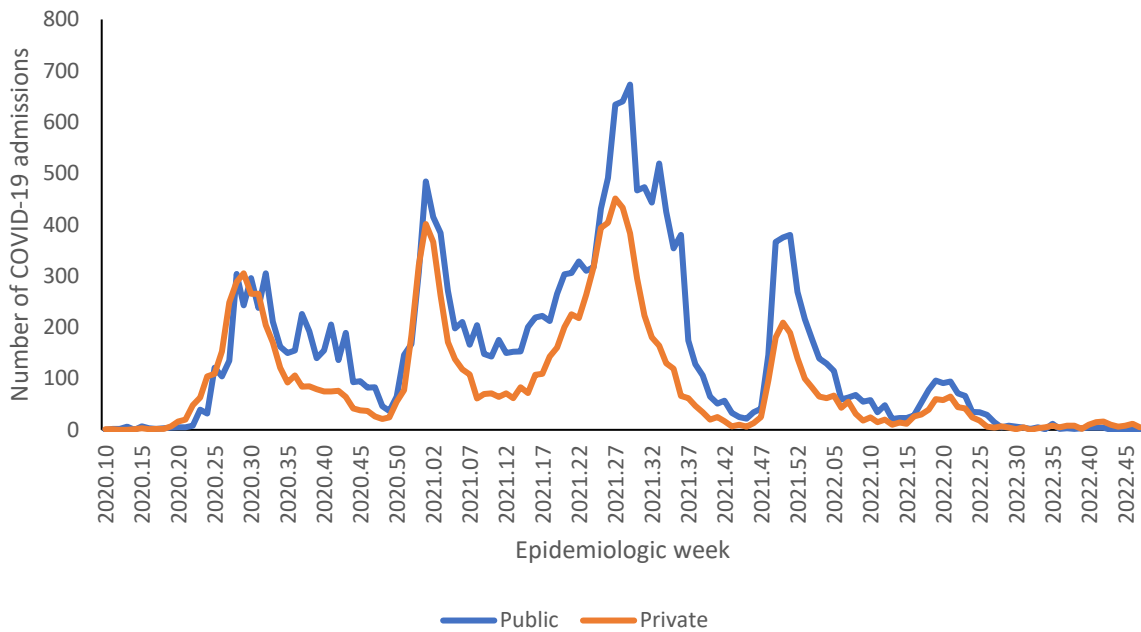


**Table 10:** Previous 14 days and current 14 days average COVID-19 admissions and deaths and percentage changes, Mpumalanga, 29 October-26 November 2022.

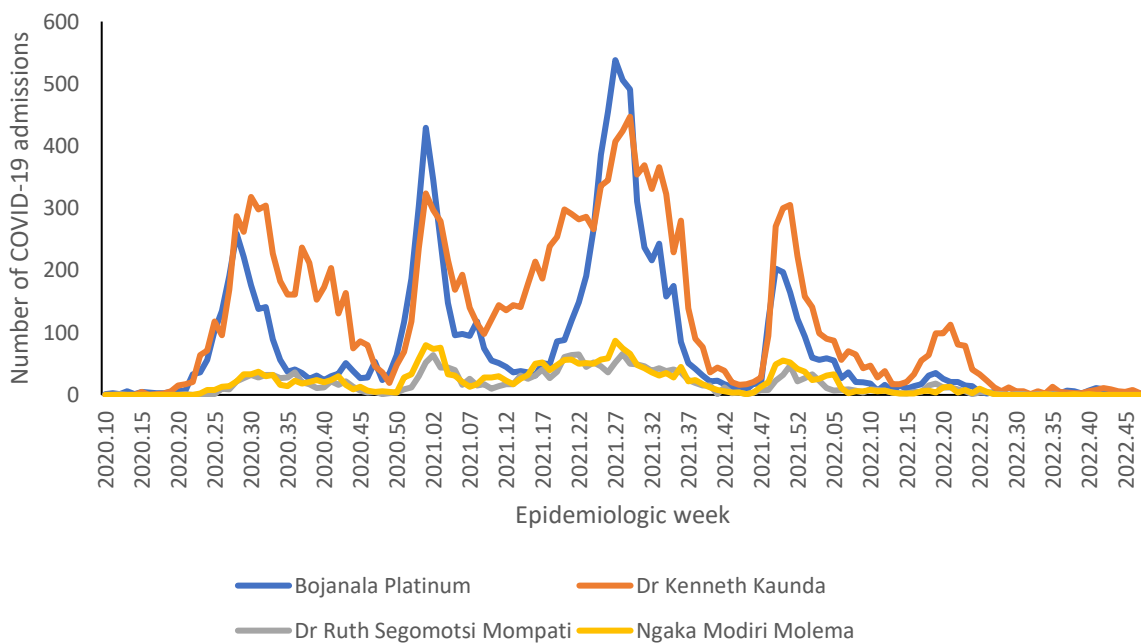
| District     | Previous 14 days admissions average | Current 14 days admissions average | Percentage change in admissions | Previous 14 days deaths average | Current 14 days deaths average | Percentage change in deaths |
|--------------|-------------------------------------|------------------------------------|---------------------------------|---------------------------------|--------------------------------|-----------------------------|
| Ehlanzeni    | 1.00                                | 0.86                               | -14.29                          | 0.00                            | 0.07                           | 0.00                        |
| Gert Sibande | 0.43                                | 0.14                               | -66.67                          | 0.00                            | 0.00                           | 0.00                        |
| Nkangala     | 0.64                                | 0.86                               | 33.33                           | 0.07                            | 0.00                           | -100.00                     |



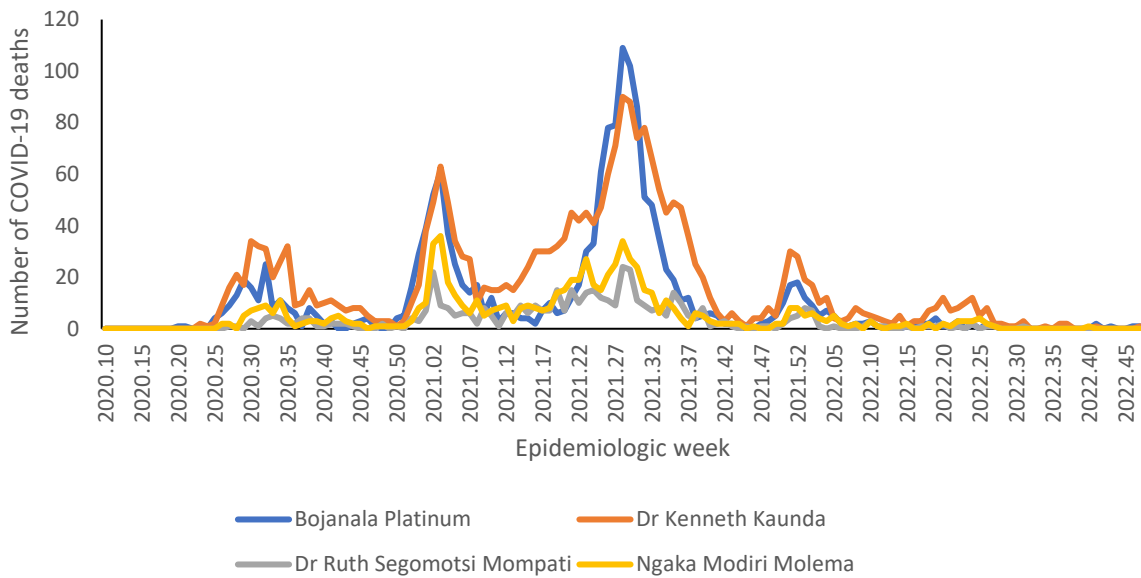
## North West



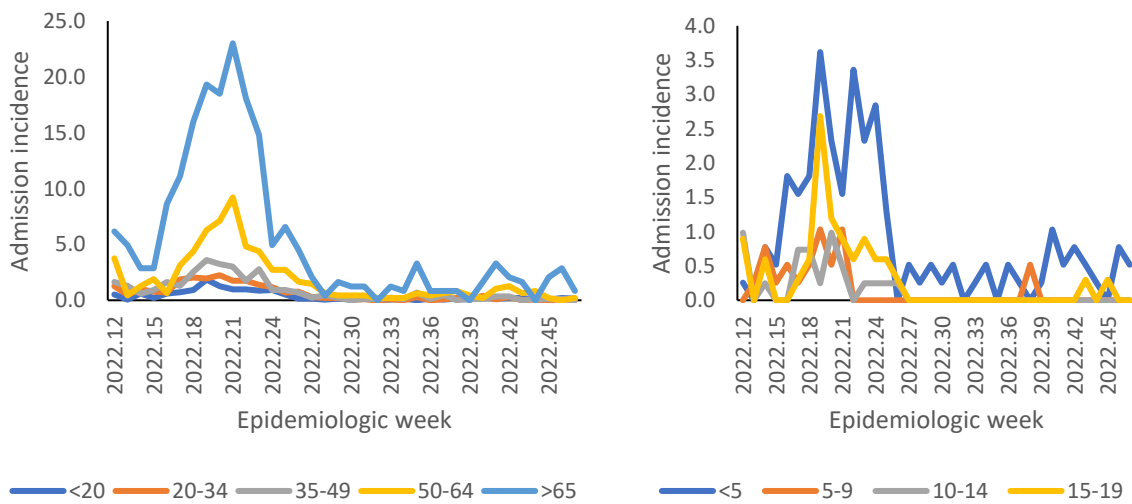
**Figure 32:** Number of reported COVID-19 admissions by health sector and epidemiologic week of diagnosis, North West, 5 March 2020-26 November 2022, N=34,303



**Figure 33:** Number of reported COVID-19 admissions, by district and epidemiologic week, North West, 5 March 2020-26 November 2022, N=34,303



**Figure 34:** Number of reported COVID-19 in-hospital deaths, by district and epidemiologic week, North West, 5 March 2020-26 November 2022, N=5,020

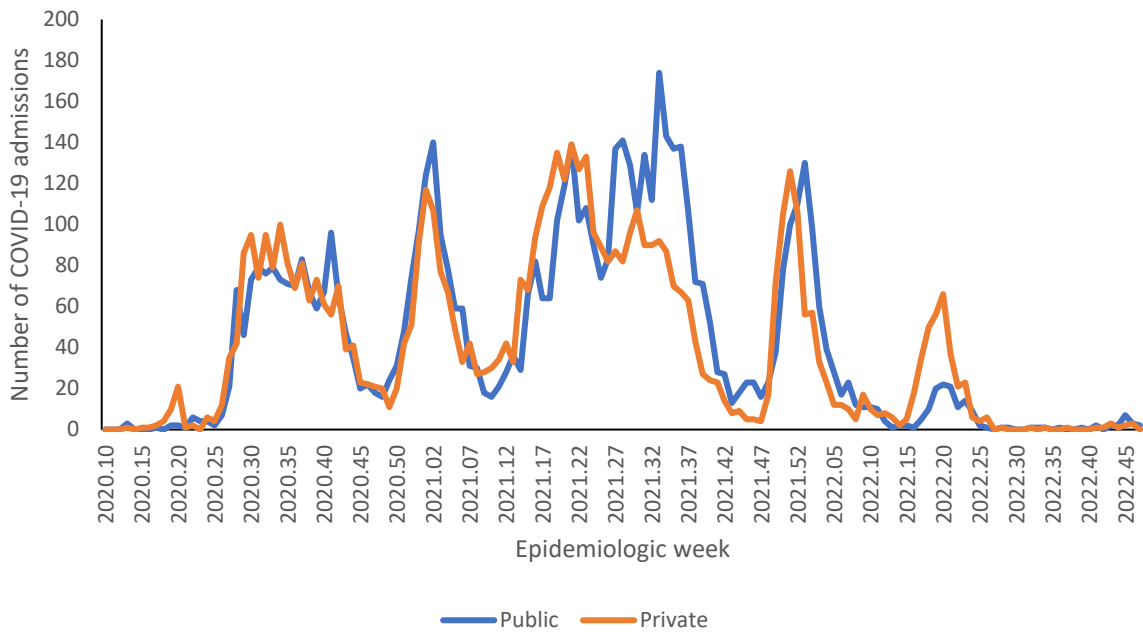


**Figure 35:** Incidence risk of COVID-19 admissions per 100,000 persons, by age group and epidemiologic week of diagnosis, North West, 19 March 2022-26 November 2022

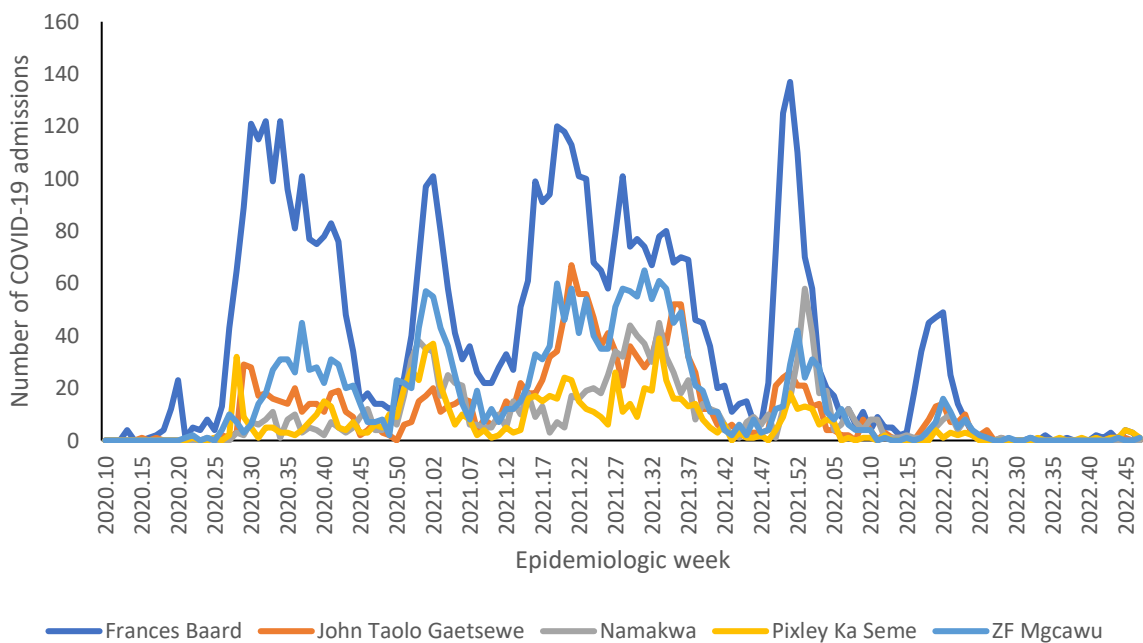
**Table 11:** Previous 14 days and current 14 days average COVID-19 admissions and deaths and percentage changes, North West, 29 October-26 November 2022.

| District                  | Previous 14 days admissions average | Current 14 days admissions average | Percentage change in admissions | Previous 14 days deaths average | Current 14 days deaths average | Percentage change in deaths |
|---------------------------|-------------------------------------|------------------------------------|---------------------------------|---------------------------------|--------------------------------|-----------------------------|
| Bojanala Platinum         | 0.29                                | 0.43                               | 50.00                           | 0.00                            | 0.14                           | 0.00                        |
| Dr Kenneth Kaunda         | 0.79                                | 0.79                               | 0.00                            | 0.00                            | 0.07                           | 0.00                        |
| Dr Ruth Segomotsi Mompoti | 0.00                                | 0.00                               | 0.00                            | 0.00                            | 0.00                           | 0.00                        |
| Ngaka Modiri Molema       | 0.00                                | 0.00                               | 0.00                            | 0.00                            | 0.00                           | 0.00                        |

### Northern Cape

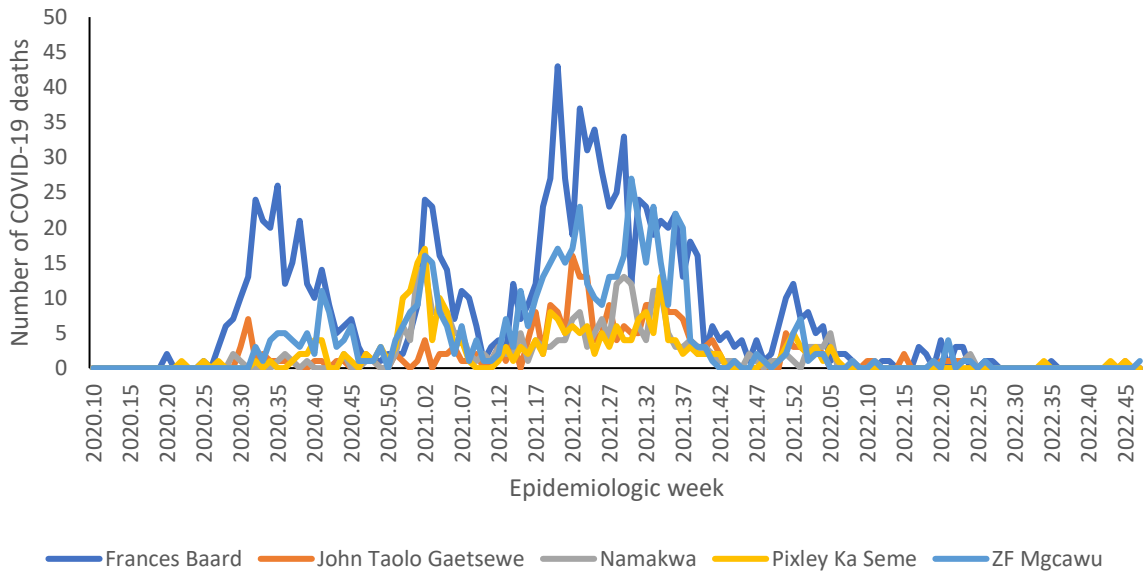


**Figure 36:** Number of reported COVID-19 admissions by health sector and epidemiologic week of diagnosis, Northern Cape, 5 March 2020-26 November 2022, N=11,938

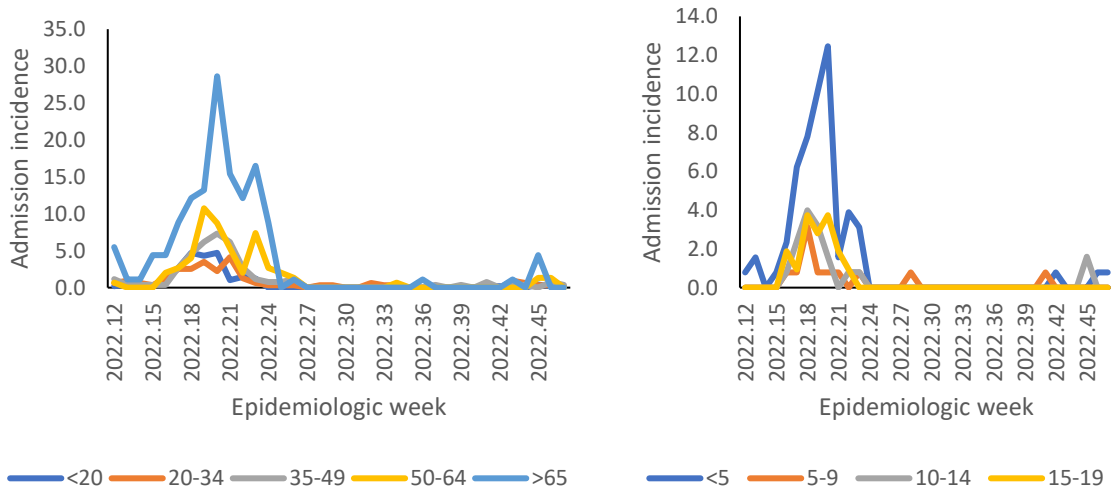


**Figure 37:** Number of reported COVID-19 admissions by district and epidemiologic week, Northern Cape, 5 March 2020-26 November 2022, N=11,938





**Figure 38:** Number of reported COVID-19 in-hospital deaths, by district and epidemiologic week, Northern Cape, 5 March 2020-26 November 2022, N=2,462



**Figure 39:** Incidence risk of COVID-19 admissions per 100,000 persons, by age group and epidemiologic week of diagnosis, Northern Cape, 19 March 2022- 26 November 2022

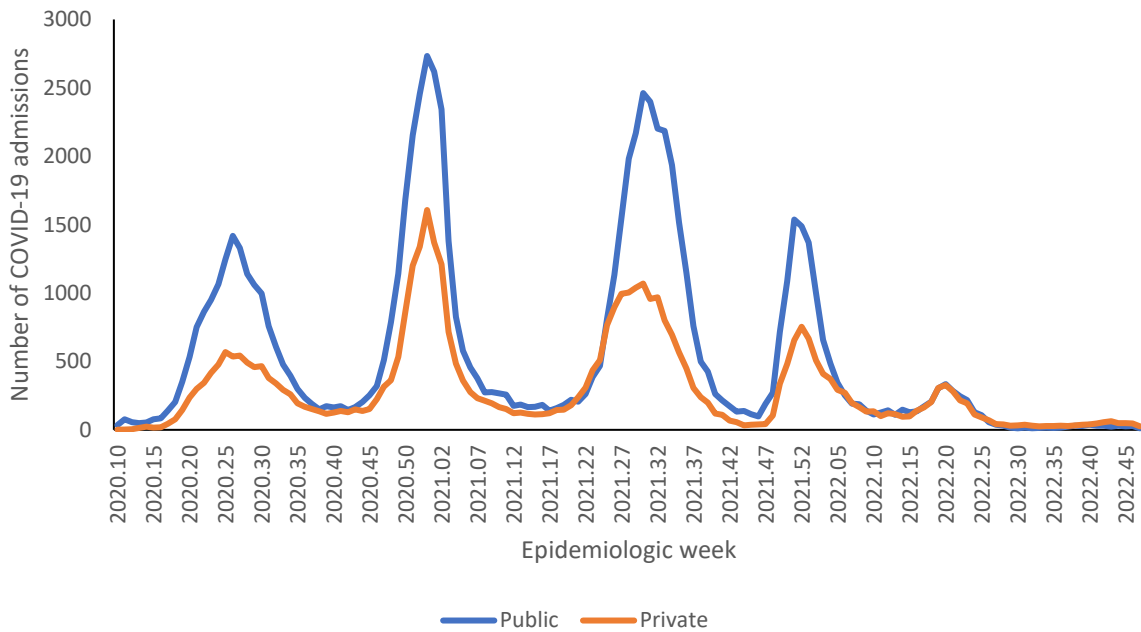


**Table 12:** Previous 14 days and current 14 days average COVID-19 admissions and deaths and percentage changes, Northern Cape, 29 October-26 November 2022.

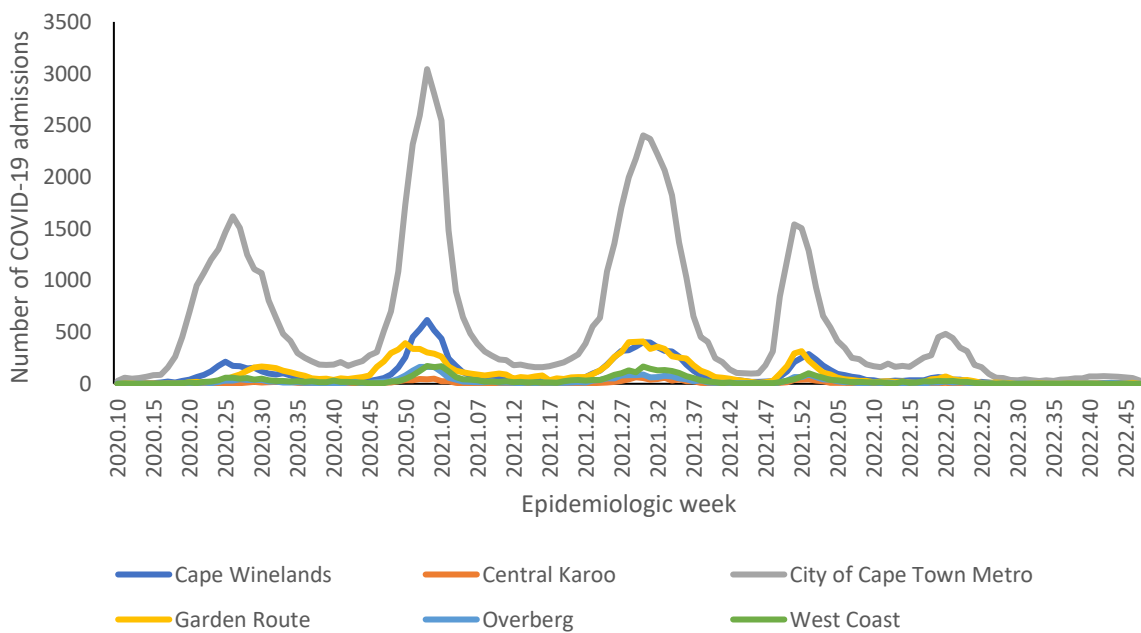
| District            | Previous 14 days admissions average | Current 14 days admissions average | Percentage change in admissions | Previous 14 days deaths average | Current 14 days deaths average | Percentage change in deaths |
|---------------------|-------------------------------------|------------------------------------|---------------------------------|---------------------------------|--------------------------------|-----------------------------|
| Frances Baard       | 0.29                                | 0.21                               | -25.00                          | 0.00                            | 0.00                           | 0.00                        |
| John Taolo Gaetsewe | 0.14                                | 0.00                               | -100.00                         | 0.07                            | 0.00                           | -100.00                     |
| Namakwa             | 0.00                                | 0.00                               | 0.00                            | 0.00                            | 0.00                           | 0.00                        |
| Pixley Ka Seme      | 0.36                                | 0.29                               | -20.00                          | 0.07                            | 0.00                           | -100.00                     |
| ZF Mgcawu           | 0.07                                | 0.07                               | 0.00                            | 0.00                            | 0.07                           | 0.00                        |



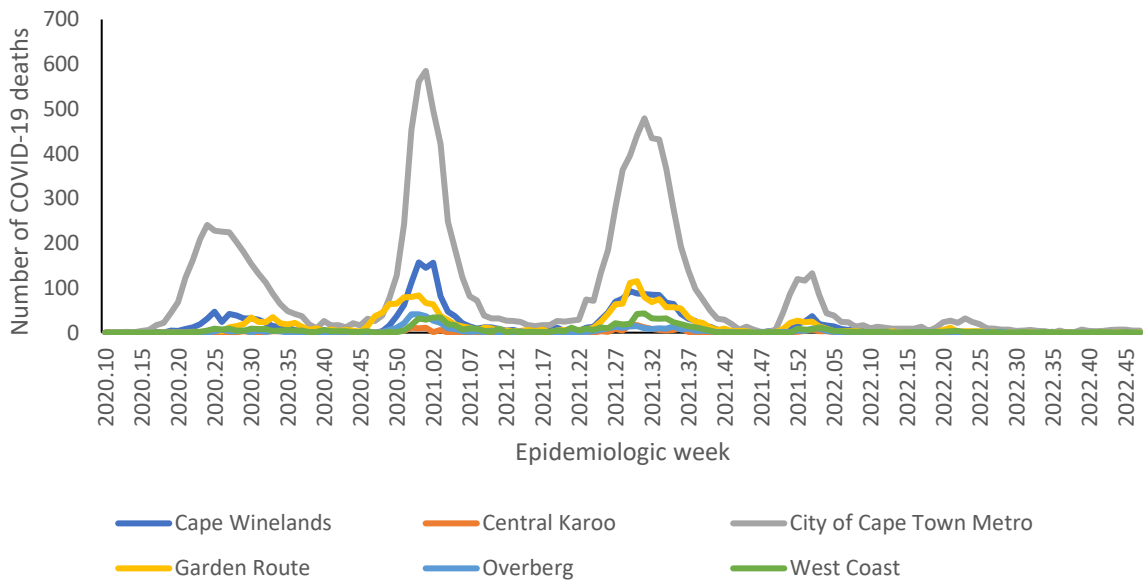
## Western Cape



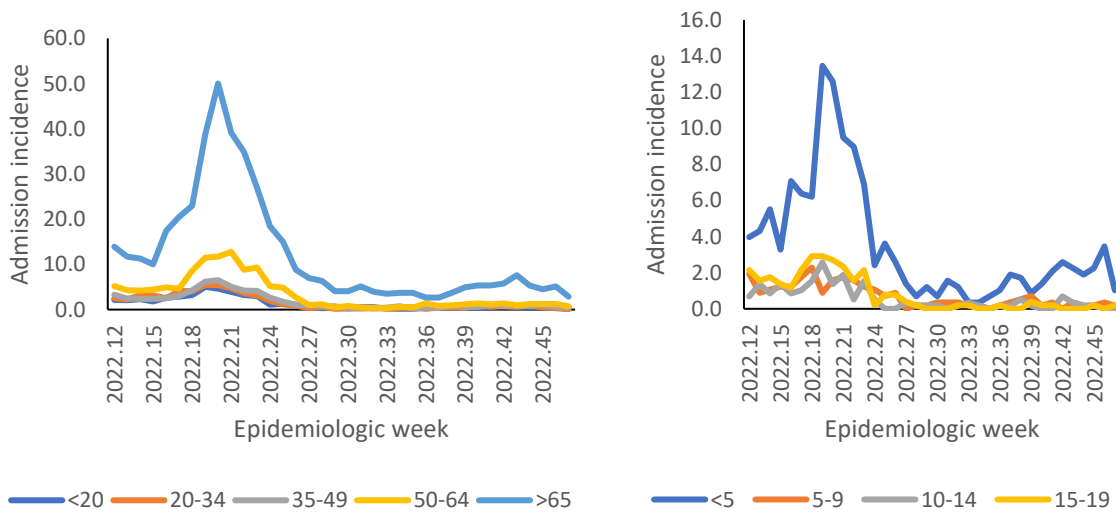
**Figure 40:** Number of reported COVID-19 admissions by health sector and epidemiologic week of diagnosis, Western Cape, 5 March 2020-26 November 2022, N=121,636



**Figure 41:** Number of reported COVID-19 admissions, by district and epidemiologic week, Western Cape, 5 March 2020-26 November 2022, N=121,636



**Figure 42:** Number of reported COVID-19 in-hospital deaths, by district and epidemiologic week, Western Cape, 5 March 2020-26 November 2022, N=18,958



**Figure 43:** Incidence risk of COVID-19 admissions per 100,000 persons, by age group and epidemiological week of diagnosis, Western Cape, 19 March 2022- 26 November 2022



**Table 13:** Previous 14 days and current 14 days average COVID-19 admissions and deaths and percentage changes, Western Cape, 29 October-26 November 2022.

| District                | Previous 14 days admissions average | Current 14 days admissions average | Percentage change in admissions | Previous 14 days deaths average | Current 14 days deaths average | Percentage change in deaths |
|-------------------------|-------------------------------------|------------------------------------|---------------------------------|---------------------------------|--------------------------------|-----------------------------|
| Cape Winelands          | 0.71                                | 0.79                               | 10.00                           | 0.07                            | 0.00                           | -100.00                     |
| Central Karoo           | 0.00                                | 0.00                               | 0.00                            | 0.00                            | 0.00                           | 0.00                        |
| City of Cape Town Metro | 9.29                                | 6.21                               | -33.08                          | 1.00                            | 0.71                           | -28.57                      |
| Garden Route            | 0.50                                | 0.64                               | 28.57                           | 0.07                            | 0.07                           | 0.00                        |
| Overberg                | 0.36                                | 0.14                               | -60.00                          | 0.00                            | 0.00                           | 0.00                        |
| West Coast              | 0.14                                | 0.07                               | -50.00                          | 0.07                            | 0.00                           | -100.00                     |

## Limitation

DATCOV now includes reporting from all hospitals with COVID-19 admissions, but many hospitals are yet to reach complete submission of historic data. Data quality in a surveillance system is dependent on the information submitted by healthcare institutions. It is not possible for the NICD to verify or check the quality of all these data, however, the NICD has built-in data quality checks. Delays in reporting of admissions and deaths may affect the numbers reported in the most recent week. The National Department of Health have recruited data capturers to support hospitals to improve data submission.

As hospitals reached capacity, admission criteria may change and therefore influence trends and inferences about the progression of the epidemic. DATCOV only reports hospital-based admissions and deaths and therefore does not include deaths occurring outside hospitals. DATCOV now has a module to record out-of-hospital deaths.

Severity data has some inherent limitations. We rely on a proxy indicator for severity and do not have clinical or laboratory parameters to ascertain clinical severity. In the early and late phases of the wave there is likely to be lower severity due to there being sufficient hospital capacity. It may take a few weeks for hospitalisation outcomes to accumulate. Early reporting on case fatality ratio is also biased particularly in older adults who may have longer admissions and are more likely to die.

## Acknowledgements

All public and private sector hospitals submitting data to DATCOV

Private hospital groups submitting data to DATCOV:

- Netcare
- Life Healthcare
- Mediclinic Southern Africa
- National Hospital Network (NHN)
- Clinix Health Group
- Lenmed
- Joint Medical Holdings (JMH)

## Appendix

**Table 14:** Percentage incidence change in hospital admissions over 14 days, by district, South Africa, 12 November 2022-26 November 2022.

| Province      | District                   | Total admissions | Incidence (per 100k) | New admissions | New admissions incidence (per 100k) | % Average change (14 days) |
|---------------|----------------------------|------------------|----------------------|----------------|-------------------------------------|----------------------------|
| Eastern Cape  | Alfred Nzo                 | 2783             | 337.53               | 2              | 0.24                                | -60.00                     |
|               | Amathole                   | 3320             | 424.25               | 0              | 0.00                                | 100.00                     |
|               | Buffalo City Metro         | 10705            | 1352.51              | 2              | 0.25                                | -33.33                     |
|               | Chris Hani                 | 5355             | 751.51               | 0              | 0.00                                | 100.00                     |
|               | Joe Gqabi                  | 1223             | 356.65               | 0              | 0.00                                | 100.00                     |
|               | Nelson Mandela Bay Metro   | 17055            | 1413.71              | 8              | 0.66                                | 60.00                      |
|               | O R Tambo                  | 5073             | 330.79               | 1              | 0.07                                | -50.00                     |
|               | Sarah Baartman             | 3428             | 710.37               | 1              | 0.21                                | 0.00                       |
| Free State    | Fezile Dabi                | 3863             | 755.15               | 2              | 0.39                                | 0.00                       |
|               | Lejweleputswa              | 6781             | 1038.15              | 4              | 0.61                                | -33.33                     |
|               | Mangaung Metro             | 15515            | 1770.35              | 1              | 0.11                                | -88.89                     |
|               | Thabo Mofutsanyana         | 5867             | 767.65               | 0              | 0.00                                | 100.00                     |
|               | Xhariep                    | 739              | 581.69               | 0              | 0.00                                | 100.00                     |
| Gauteng       | City of Johannesburg Metro | 57263            | 952.29               | 38             | 0.63                                | -38.71                     |
|               | City of Tshwane Metro      | 45160            | 1182.09              | 34             | 0.89                                | -46.03                     |
|               | Ekurhuleni Metro           | 34739            | 858.52               | 7              | 0.17                                | -53.33                     |
|               | Sedibeng                   | 10310            | 1058.51              | 4              | 0.41                                | -33.33                     |
|               | West Rand                  | 13977            | 1461.40              | 1              | 0.10                                | -66.67                     |
| KwaZulu-Natal | Amajuba                    | 4755             | 838.62               | 0              | 0.00                                | -100.00                    |
|               | eThekweni Metro            | 41618            | 1037.96              | 61             | 1.52                                | -30.68                     |
|               | Harry Gwala                | 2836             | 560.33               | 0              | 0.00                                | -100.00                    |
|               | iLembe                     | 3091             | 444.29               | 3              | 0.43                                | -40.00                     |
|               | King Cetshwayo             | 9856             | 1032.98              | 6              | 0.63                                | -60.00                     |
|               | Ugu                        | 5991             | 744.73               | 2              | 0.25                                | -60.00                     |
|               | uMgungundlovu              | 12051            | 1057.19              | 10             | 0.88                                | -50.00                     |
|               | uMkhanyakude               | 1525             | 221.66               | 0              | 0.00                                | 100.00                     |
|               | Umzinyathi                 | 2432             | 431.14               | 1              | 0.18                                | 0.00                       |
|               | UThukela                   | 3380             | 482.59               | 2              | 0.29                                | -50.00                     |
| Limpopo       | Zululand                   | 2550             | 288.40               | 0              | 0.00                                | 100.00                     |
|               | Capricorn                  | 8777             | 661.45               | 2              | 0.15                                | -66.67                     |
|               | Mopani                     | 3836             | 318.96               | 0              | 0.00                                | -100.00                    |
|               | Sekhukhune                 | 2161             | 177.62               | 1              | 0.08                                | -80.00                     |
|               | Vhembe                     | 3094             | 216.31               | 1              | 0.07                                | 100.00                     |



|                  |                                 |       |         |    |      |         |
|------------------|---------------------------------|-------|---------|----|------|---------|
|                  | Waterberg                       | 3388  | 451.64  | 0  | 0.00 | -100.00 |
| Mpumalanga       | Ehlanzeni                       | 8207  | 448.87  | 6  | 0.33 | -14.29  |
|                  | Gert Sibande                    | 7870  | 620.72  | 0  | 0.00 | -100.00 |
|                  | Nkangala                        | 7059  | 428.51  | 2  | 0.12 | -80.00  |
| North West       | Bojanala<br>Platinum            | 11447 | 587.58  | 4  | 0.21 | 0.00    |
|                  | Dr Kenneth<br>Kaunda            | 17650 | 2197.18 | 4  | 0.50 | -50.00  |
|                  | Dr Ruth<br>Segomotsi<br>Mompoti | 2391  | 512.52  | 0  | 0.00 | 100.00  |
|                  | Ngaka Modiri<br>Molema          | 2816  | 311.21  | 0  | 0.00 | 100.00  |
| Northern<br>Cape | Frances Baard                   | 5611  | 1348.90 | 0  | 0.00 | -100.00 |
|                  | John Taolo<br>Gaetsewe          | 1702  | 615.87  | 0  | 0.00 | 100.00  |
|                  | Namakwa                         | 1350  | 1153.93 | 0  | 0.00 | 100.00  |
|                  | Pixley Ka Seme                  | 944   | 448.64  | 1  | 0.48 | -66.67  |
|                  | ZF Mgcawu                       | 2331  | 822.76  | 1  | 0.35 | 100.00  |
| Western<br>Cape  | Cape Winelands                  | 13657 | 1428.83 | 5  | 0.52 | -58.33  |
|                  | Central Karoo                   | 1403  | 1851.12 | 0  | 0.00 | 100.00  |
|                  | City of Cape<br>Town Metro      | 85251 | 1822.03 | 42 | 0.90 | -40.85  |
|                  | Garden Route                    | 13393 | 2131.82 | 0  | 0.00 | -100.00 |
|                  | Overberg                        | 3353  | 1097.44 | 1  | 0.33 | 0.00    |
|                  | West Coast                      | 4591  | 977.86  | 0  | 0.00 | -100.00 |



**Table 15:** Number of reported COVID-19 admissions and in-hospital deaths by age and gender, South Africa, 5 March 2020-26 November 2022.

| Age Group (Years) | ADMISSIONS    |               |            |               | DEATHS       |              |           |               |
|-------------------|---------------|---------------|------------|---------------|--------------|--------------|-----------|---------------|
|                   | Female        | Male          | Unknown    | Total         | Female       | Male         | Unknown   | Total         |
| 0-4               | 7720          | 9841          | 56         | 17617         | 186          | 217          | 4         | 407           |
| 5-9               | 2118          | 2821          | 8          | 4947          | 31           | 39           | 0         | 70            |
| 10-14             | 2774          | 2872          | 12         | 5658          | 70           | 71           | 1         | 142           |
| 15-19             | 7397          | 4180          | 6          | 11583         | 164          | 140          | 0         | 304           |
| 20-24             | 11434         | 5783          | 10         | 17227         | 367          | 283          | 1         | 651           |
| 25-29             | 18048         | 8171          | 11         | 26230         | 786          | 536          | 0         | 1322          |
| 30-34             | 23099         | 12861         | 15         | 35975         | 1324         | 1135         | 2         | 2461          |
| 35-39             | 23608         | 16810         | 22         | 40440         | 1883         | 1785         | 4         | 3672          |
| 40-44             | 20815         | 18469         | 18         | 39302         | 2298         | 2376         | 0         | 4674          |
| 45-49             | 22910         | 22398         | 12         | 45320         | 3239         | 3459         | 1         | 6699          |
| 50-54             | 26400         | 24728         | 10         | 51138         | 4409         | 4587         | 2         | 8998          |
| 55-59             | 29298         | 26750         | 16         | 56064         | 6217         | 6257         | 5         | 12479         |
| 60-64             | 26193         | 23929         | 16         | 50138         | 6700         | 6915         | 6         | 13621         |
| 65-69             | 22651         | 20235         | 19         | 42905         | 6957         | 6521         | 6         | 13484         |
| 70-74             | 19507         | 17234         | 19         | 36760         | 6197         | 6062         | 4         | 12263         |
| 75-79             | 14908         | 12370         | 9          | 27287         | 4950         | 4648         | 3         | 9601          |
| 80-84             | 11456         | 8208          | 8          | 19672         | 4069         | 3194         | 3         | 7266          |
| 85-89             | 6346          | 3968          | 2          | 10316         | 2305         | 1692         | 0         | 3997          |
| 90-94             | 2788          | 1422          | 1          | 4211          | 1129         | 670          | 0         | 1799          |
| >=95              | 845           | 397           | 3          | 1245          | 373          | 168          | 0         | 541           |
| Unknown           | 804           | 620           | 46         | 1470          | 46           | 44           | 0         | 90            |
| <b>Total</b>      | <b>301119</b> | <b>244067</b> | <b>319</b> | <b>545505</b> | <b>53700</b> | <b>50799</b> | <b>42</b> | <b>104541</b> |



**NATIONAL INSTITUTE FOR  
COMMUNICABLE DISEASES**

Division of the National Health Laboratory Service