



COVID-19 Weekly Testing Summary

Week 43 of 2022

This report summarises national laboratory PCR testing for SARS-CoV-2, the virus causing COVID-19, in South Africa. This report is based on data for specimens reported up to 29 October 2022 (week 43 of 2022).

NOTE: From week 28 onwards, only PCR tests are included in the report (i.e. excluding antigen tests).

Highlights:

- In the period 1 March 2020 through 29 October 2022, 21,271,724 PCR tests for SARS-CoV-2 have been reported nationally. The number of PCR tests reported in week 43 of 2022 (n=17,810) was 8.1% lower than the number of PCR tests reported in the previous week (n= 19,381 in week 42).
- In week 43 the PCR testing rate was 30 per 100,000 persons. The overall PCR testing rate decreased from the previous week (32 per 100,000 persons in week 42).
- The PCR testing rate in week 43 was highest in Kwa-Zulu-Natal (45 per 100,000 persons), followed by the Gauteng (41 per 100,000 persons) and lowest in Limpopo (5 per 100,000 persons).
- In week 43 the percentage testing positive was 9.5%, which did not change significantly from the previous week (9.7% in week 42, $p \geq 0.05$).
- The percentage testing positive in week 43 was highest in Kwa-Zulu-Natal (12.6%), followed by the Western Cape (11.6%), Limpopo (11.1%) and Free State (10.1%). The percentage testing positive was <10.0% in all other provinces.
- In week 43, compared to the previous week, the percentage testing positive increased significantly in Eastern Cape and Kwa-Zulu-Natal ($p < 0.05$). The percentage testing positive did not change in all other provinces ($p \geq 0.05$).
- The percentage testing positive in week 43 was highest in the 70-74 years' age group (18.0%), followed by ≥80 years (17.0%) and 60-64 years (15.0%) age groups.



NATIONAL INSTITUTE FOR COMMUNICABLE DISEASES

Division of the National Health Laboratory Service

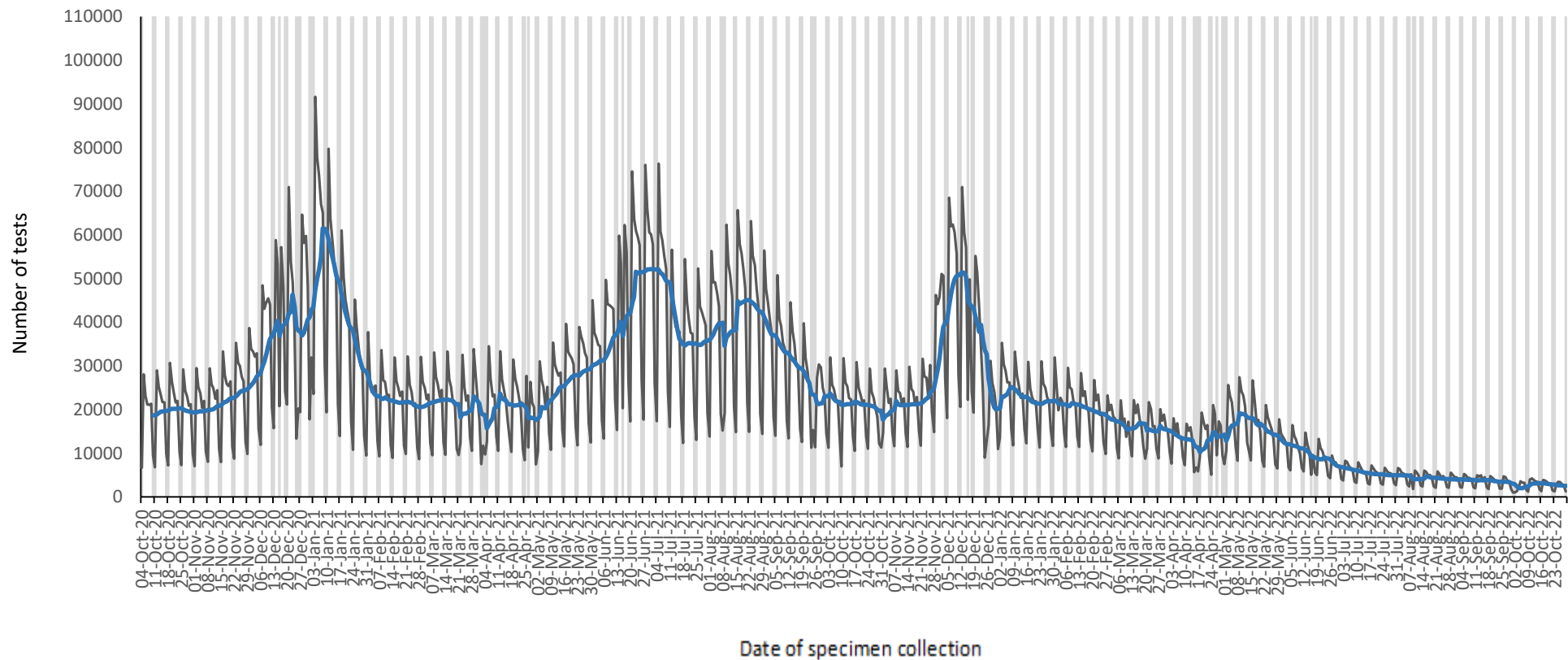


Figure 1. Number of SARS-CoV-2 PCR tests reported by date of specimen collection, South Africa, 4 October 2020 – 29 October 2022. Blue line shows the 7-day moving average of the number of PCR tests reported. Grey bars highlight weekend days and public holiday



Table 1. Weekly number of SARS-CoV-2 PCR tests and positive tests reported, South Africa, 2 January – 29 October 2022

Week number	Week beginning	No. of PCR tests n (%)	No. of positive PCR tests	Percentage positive (%)	testing
1	02-Jan-22	176320 (0.8)	45453	25.8	
2	09-Jan-22	160320 (0.8)	27666	17.3	
3	16-Jan-22	150050 (0.7)	19105	12.7	
4	23-Jan-22	153462 (0.7)	20128	13.1	
5	24-Jan-22	148527 (0.7)	17695	11.9	
6	06-Feb-22	147889 (0.7)	16071	10.9	
7	13-Feb-22	140052 (0.7)	14762	10.5	
8	14-Feb-22	132986 (0.6)	13025	9.8	
9	27-Feb-22	121530 (0.6)	10269	8.4	
10	06-Mar-22	109457 (0.5)	8171	7.5	
11	13-Mar-22	117607 (0.6)	7722	6.6	
12	20-Mar-22	105319 (0.5)	7261	6.9	
13	27-Mar-22	106359 (0.5)	7987	7.5	
14	03-Apr-22	93779 (0.4)	7864	8.4	
15	10-Apr-22	80639 (0.4)	8850	11.0	
16	17-Apr-22	92538 (0.4)	17228	18.6	
17	24-Apr-22	97818 (0.5)	23648	24.2	
18	01-May-22	117061 (0.6)	32991	28.2	
19	08-May-22	126890 (0.6)	34323	27.0	
20	15-May-22	115232 (0.5)	26650	23.1	
21	22-May-22	99452 (0.5)	17374	17.5	
22	29-May-22	84466 (0.4)	10606	12.6	
23	05-Jun-22	77906 (0.4)	7497	9.6	
24	12-Jun-22	63279 (0.3)	4488	7.1	
25	19-Jun-22	61550 (0.3)	3358	5.5	
26	26-Jun-22	47982 (0.2)	2165	4.5	
27	03-Jul-22	43162 (0.2)	2017	4.7	
28	10-Jul-22	38532 (0.2)	1882	4.9	
29	17-Jul-22	36467 (0.2)	1677	4.6	
30	24-Jul-22	34803 (0.2)	1574	4.5	
31	31-Jul-22	34396 (0.2)	1369	4.0	
32	07-Aug-22	28658 (0.1)	1177	4.1	
33	14-Aug-22	30918 (0.1)	1256	4.1	
34	21-Aug-22	28849 (0.1)	1200	4.2	
35	28-Aug-22	28148 (0.1)	1150	4.1	
36	04-Sep-22	27320 (0.1)	1268	4.6	
37	11-Sep-22	27047 (0.1)	1353	5.0	
38	12-Sep-22	24278 (0.1)	1331	5.5	
39	25-Sep-22	21245 (0.1)	1408	6.6	
40	02-Oct-22	16282 (0.1)	1164	7.1	
41	09-Oct-22	22144 (0.1)	2078	9.4	
42	16-Oct-22	19967 (0.1)	1932	9.7	
43	23-Oct-22	17810 (0.1)	1700	9.5	



NATIONAL INSTITUTE FOR COMMUNICABLE DISEASES

Division of the National Health Laboratory Service

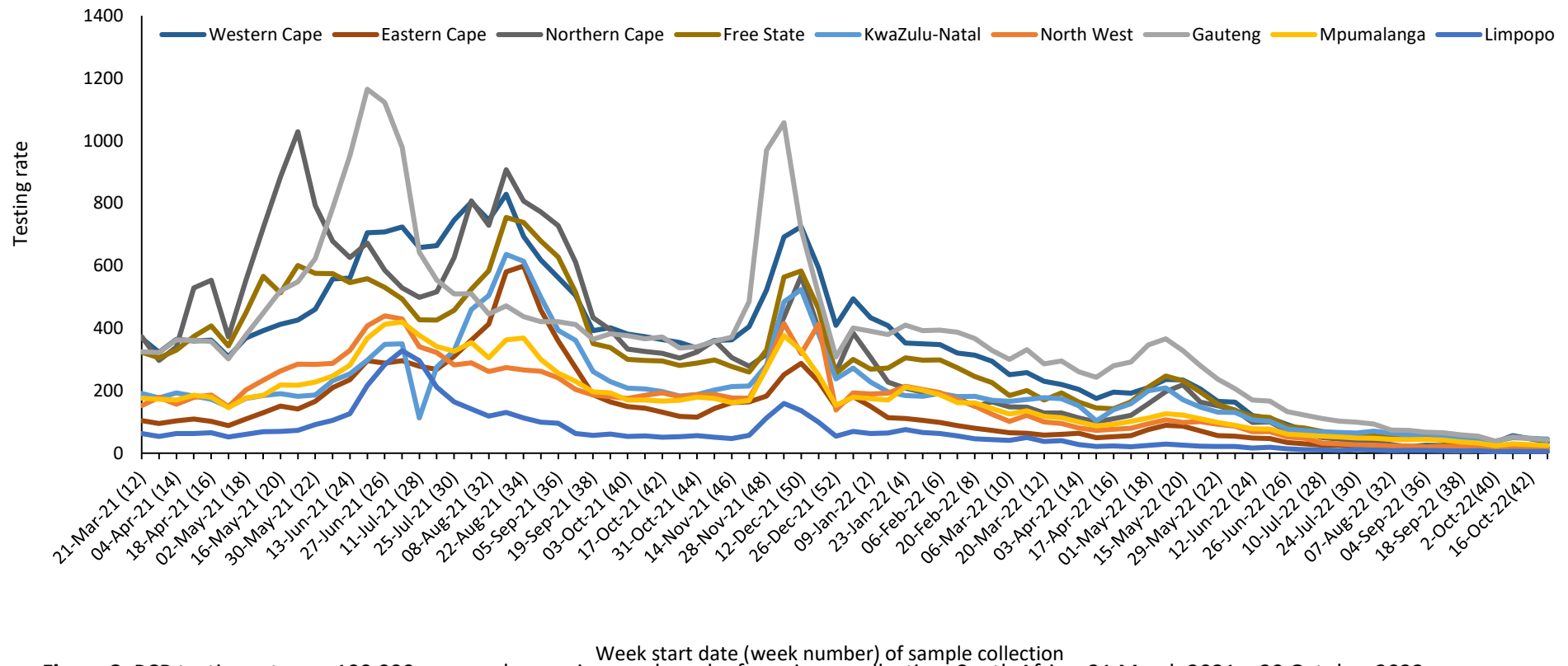


Figure 2. PCR testing rate per 100,000 persons by province and week of specimen collection, South Africa, 21 March 2021 – 29 October 2022

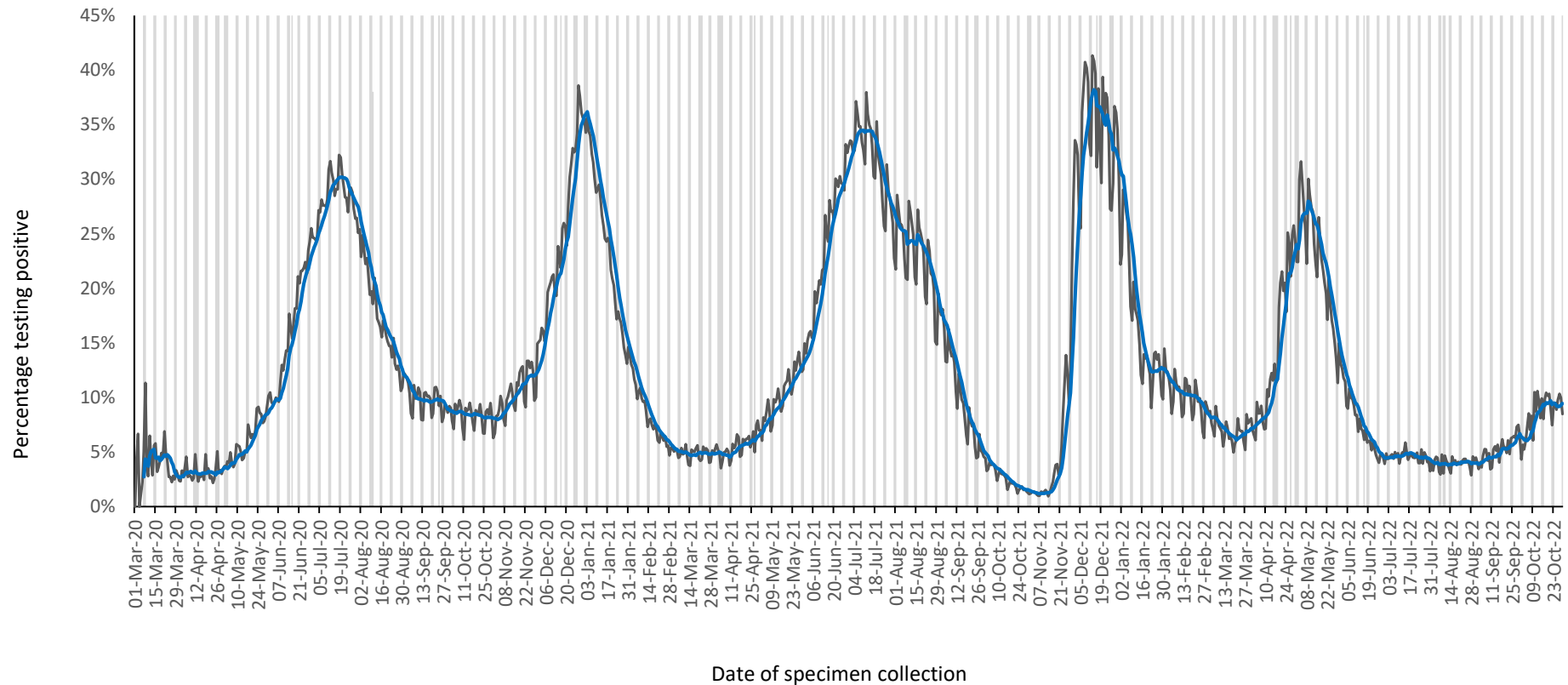


Figure 3. Percentage of PCR tests positive for SARS-CoV-2 by date of specimen collection, South Africa, 1 March 2020 – 29 October 2022. Blue line shows the 7-day moving average of the percentage testing positive. Grey bars highlight weekend days and public holidays.

Table 2. Weekly number of PCR tests and positive tests reported by province, South Africa, 9 – 29 October 2022

Province	Population ^a	9 - 15 Oct 2022		16 - 22 Oct 2022		23 - 29 Oct 2022		Testing rate per 100,000	Change in percentage positive from previous week ^b
		No. of tests	No. positive tests (%)	No. of tests	No. positive tests (%)	No. of tests	No. positive tests (%)		
Western Cape	7113776	3999	356 (8.9)	3262	383 (11.7)	2583	299 (11.6)	36	-0.2%
Eastern Cape	6676590	1091	80 (7.3)	1002	52 (5.2)	908	71 (7.8)	14	2.6%
Northern Cape	1303047	230	10 (4.3)	156	10 (6.4)	170	12 (7.1)	13	0.6%
Free State	2932441	644	62 (9.6)	564	52 (9.2)	456	46 (10.1)	16	0.9%
KwaZulu-Natal	11513575	5624	276 (4.9)	5482	256 (4.7)	5203	298 (5.7)	45	1.1%
North West	4122854	678	62 (9.1)	492	45 (9.1)	524	51 (9.7)	13	0.6%
Gauteng	15810388	8109	1137 (14.0)	7395	1007 (13.6)	6537	822 (12.6)	41	-1.0%
Mpumalanga	4743584	1398	55 (3.9)	1291	77 (6.0)	1148	70 (6.1)	24	0.1%
Limpopo	5926724	369	39 (10.6)	319	49 (15.4)	280	31 (11.1)	5	-4.3%
Unknown		2	1 (50.0)	4	1 (25.0)	1	0(0.0)		
Total	60142978	22144	2078 (9.4)	19967	1932 (9.7)	17810	1700 (9.5)	30	-0.2%

^a 2021 Mid-year population Statistics SA

^b Current week compared to previous week

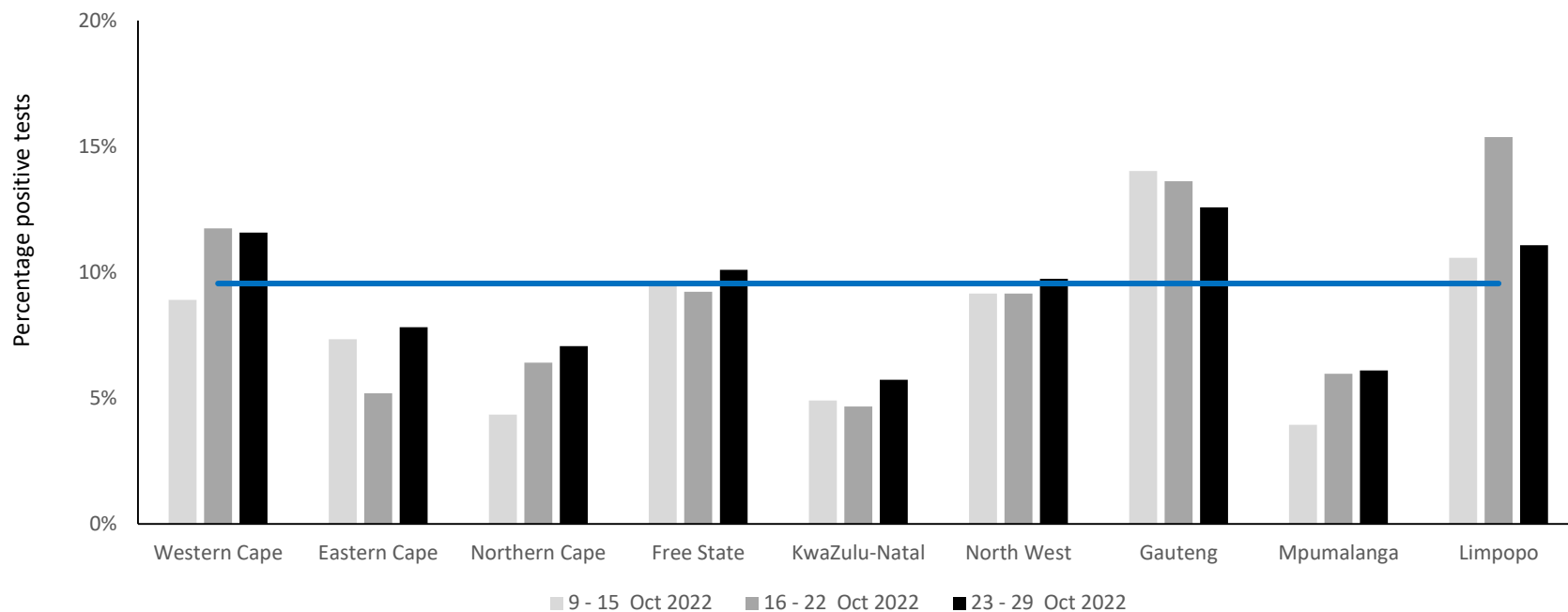


Figure 4. Weekly percentage testing positive (PCR tests only) by province, South Africa, 9 October – 29 October 2022. The horizontal blue line shows the national mean for week 43, beginning 23 October 2022

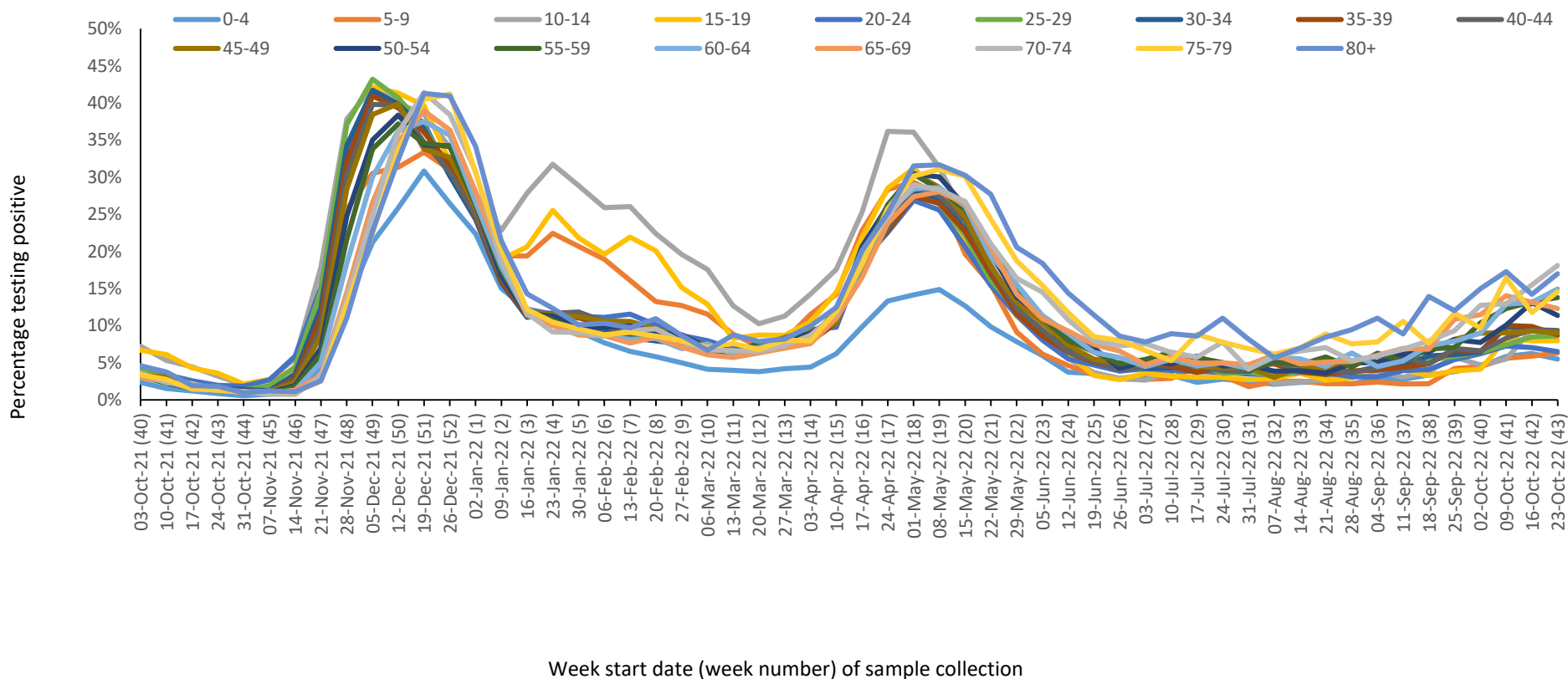


Figure 5. Percentage testing positive (PCR tests only) by age group and week of specimen collection, South Africa, 3 October 2021 – 29 October 2022

Methods

Testing for SARS-CoV-2 began on 28 January 2020 at the NICD and after the first case was confirmed on 5th March 2020, testing was expanded to a larger network of private and NHLS laboratories. Laboratory testing was conducted for people meeting the case definition for persons under investigation (PUI). This definition was updated several times over the reporting period but at different times included (i) symptomatic individuals seeking testing, (ii) hospitalised individuals for whom testing was done, (iii) individuals in high-risk occupations, (iv) individuals in outbreak settings, and (v) individuals identified through community screening and testing (CST) programmes which were implemented in April 2020 and was discontinued from the week beginning 17th May. CST was implemented differently in different provinces, and ranged from mass screening approaches (including asymptomatic individuals) to screening of individuals in contact with a confirmed case to targeted testing of clusters of cases. Respiratory specimens were submitted to testing laboratories. Testing was performed using reverse transcriptase real-time PCR, which detects SARS-CoV-2 viral genetic material. Laboratories used any one of several in-house and commercial PCR assays to test for the presence of SARS-CoV-2 RNA. Testing for SARS-CoV-2 using rapid antigen-based tests was implemented towards the end of October 2020 and results of reported rapid antigen-based tests were included in this report until the week 27 report (week starting 3 July 2022). However, as of the week 28 report (week starting 10 July 2022), this report was updated to only include reported PCR tests due to incomplete and delayed reporting of antigen-based tests.

Test results were automatically fed into a data warehouse after result authorisation. We excluded specimens collected outside South Africa and duplicate entries of the same test for an individual. From week 49 of 2020 onwards, test data were reported from the Notifiable Medical Conditions Surveillance System (NMCSS). Date of specimen receipt in the laboratory was used when date of specimen collection was missing. Proportion testing positive (PTP) was calculated as the number of positive tests/total number of tests and presented as percentage by multiplying with 100. Testing rates were calculated using mid-year population estimates from Statistics South Africa and expressed as tests per 100,000 (2019 estimates were used from week 10 of 2020 to week 40 of 2021, 2020 estimates were used from week 41 of 2021 to week 1 of 2022, and 2021 estimates were used from week 2 of 2022 onwards). Categorical variables were compared using the chi-squared test, with a P-value<0.05 considered statistically significant.

Limitations

- A backlog in testing of samples by laboratories affects the reported number of tests. As a result, numbers tested during this period may change in subsequent reports.
- If higher-priority specimens were tested preferentially this would likely result in an inflated proportion testing positive.
- Different and changing testing strategies (targeted vs. mass testing, PCR vs. antigen-based tests or prioritisation of severe or at-risk cases during epidemic waves) used by different provinces makes percentage testing positive and number of reported tests difficult to interpret and compare.