



COVID-19 Hospital Surveillance

Update: Week 43, 2022

Overview of report

This report summarises data of COVID-19 cases admitted to hospital surveillance sites in all provinces. The report is based on data collected from 5 March 2020 to 29 October 2022.

Highlights

- There was a 30% decrease in the number of new admissions in week 43 2022 (211) compared to the number of admissions in week 42 2022 (300). Delays in reporting of admissions and deaths may affect the numbers reported in the most recent week.
- Gauteng had the highest number of admissions in the past week (72/211, 34.1%), followed by Western Cape (50/211, 23.7%) and KwaZulu-Natal (39/211, 18.5%). Northern Cape had the lowest number of admissions (2/211, 0.9%).
- The highest weekly incidence risk of COVID-19 admissions reported in week 43 of 2022 was in the ≥65-year age group (1.7 admissions per 100 000 persons), and the lowest weekly incidence risk was in 20-34-year age group (0.1 admissions per 100 000 persons). An increased incidence risk of COVID-19 admissions was observed in children <5 years in weeks 40 and 41 nationally and in Gauteng, but the incidence risk has since decreased.

Methods

Data on hospitalisation was accessed from DATCOV, a hospital surveillance system for COVID-19 admissions, initiated on the 1 April 2020. A COVID-19 case was defined as a person with a positive reverse transcriptase polymerase chain reaction (RT-PCR) assay for SARS-CoV-2 or a person who had a positive SARS-CoV-2 antigen test who was admitted to hospital.

Data on SARS-CoV-2 cases diagnosed in public and private laboratories submitted to the NICD were reported from the line list on the NMCSS.

Case fatality ratio (CFR) was calculated for all closed cases, i.e., COVID-19 deaths divided by COVID-19 deaths plus COVID-19 discharges, excluding individuals who are still admitted in hospital. For the calculation of cumulative incidence risks, StatsSA mid-year population estimates for 2021 were utilised. For comparisons of change in admission, we used 14-day daily average admissions in the current 14-day period compared to the previous 14-day period.

Severity was defined as patients receiving oxygen or invasive ventilation, treated in high care or intensive care wards, developing acute respiratory distress syndrome, or died. While oxygen, ventilation, and ward of stay variables are updated daily for all admissions in the private sector, there may be delays with the data being updated in the public sector. Also, as patients remain in hospital their condition may change, and percentage of severity may change over time.

Data are submitted by public and private hospitals that have agreed to report COVID-19 admissions through DATCOV surveillance in all nine provinces of South Africa. On 15 July 2020, the National Health Council decided that all hospitals should report to DATCOV. As of 29 October 2022, a total of 667 facilities submitted data on hospitalised COVID-19 cases, 406 from public sector and 262 from private sector (Table 1). This reflects 100% coverage of all public and private hospitals that have had COVID-19 admissions. As new hospitals join the surveillance system, they have retrospectively captured all admissions recorded although there may be some backlogs in retrospective data capture.

Table 1: Number of hospitals reporting data on COVID-19 admissions by province and sector, South Africa, 5 March 2020-29 October 2022.

Facilities reporting	Public	Private
Eastern Cape	86	18
Free State	34	20
Gauteng	39	99
KwaZulu-Natal	71	47
Limpopo	41	7
Mpumalanga	31	9
North West	17	13
Northern Cape	29	6
Western Cape	59	43
South Africa	406	262



Results

Epidemiological and demographic trends in admissions

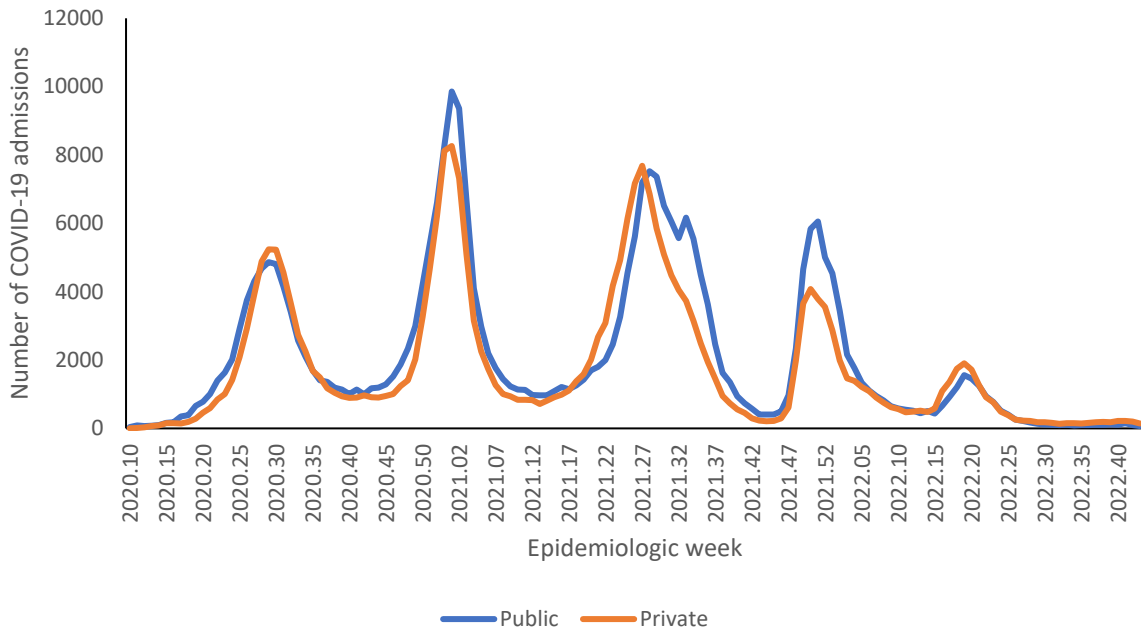


Figure 1: Number of reported COVID-19 admissions by health sector and epidemiologic week of diagnosis, South Africa, 5 March 2020-29 October 2022, N=544,198

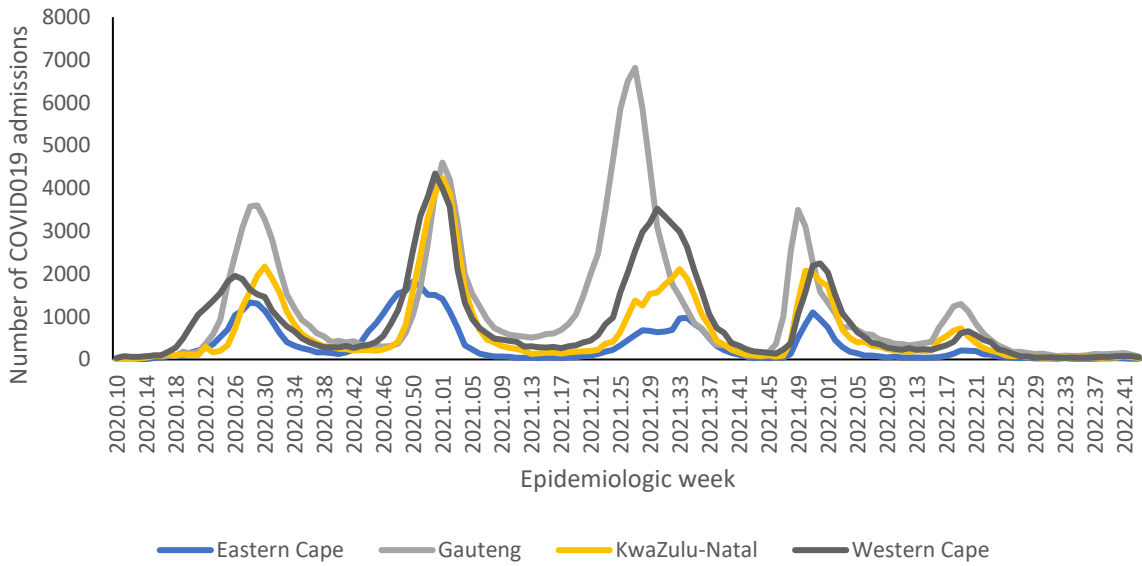


Figure 2a: Number of reported COVID-19 admissions, by provinces with highest admissions and epidemiologic week of diagnosis, South Africa, 5 March 2020-29 October 2022, N=544198

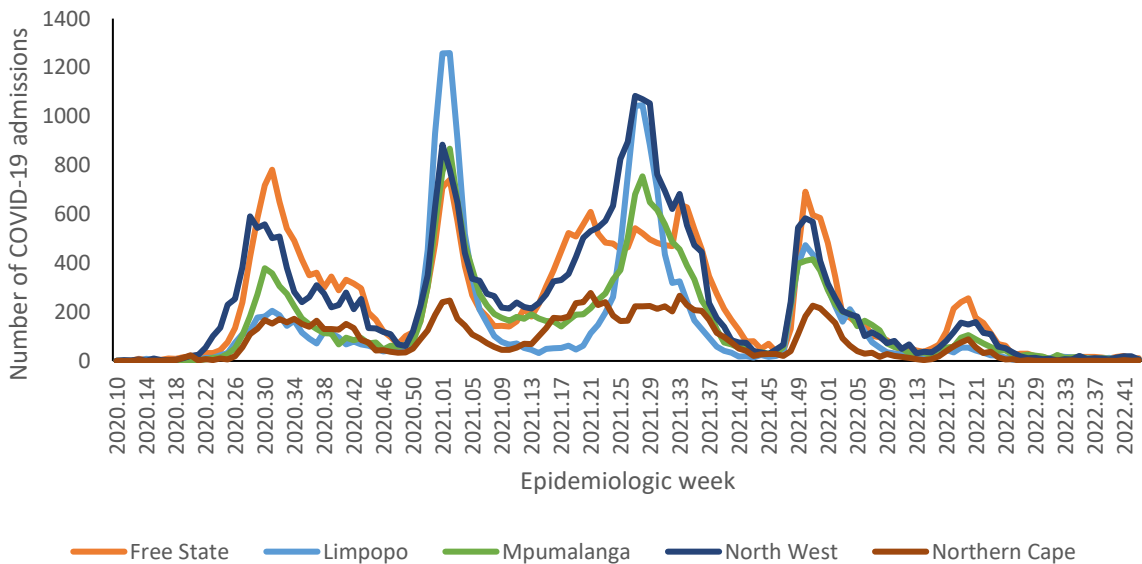


Figure 2b: Number of reported COVID-19 admissions, by provinces with lowest admissions and epidemiologic week of diagnosis, South Africa, 5 March 2020-29 October 2022, N=544,198

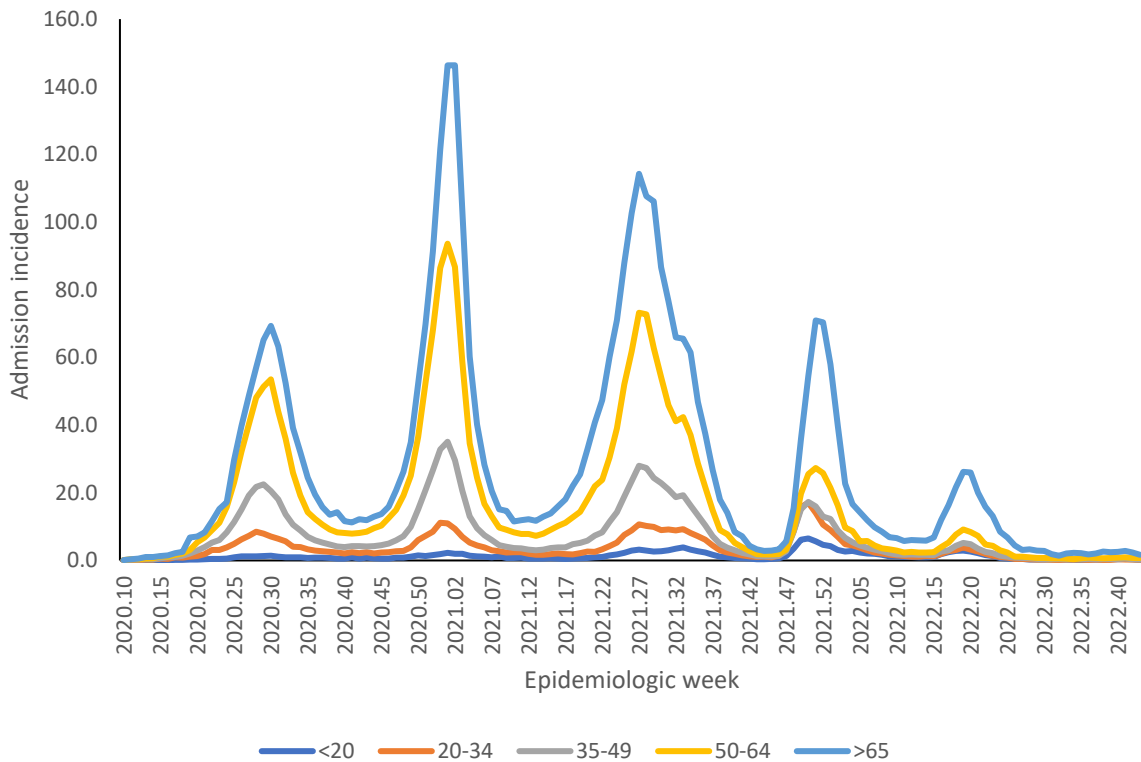


Figure 3: Incidence risk of COVID-19 admissions per 100,000 persons, by age group and epidemiologic week of diagnosis, South Africa, 5 March 2020-29 October 2022, N=544,198

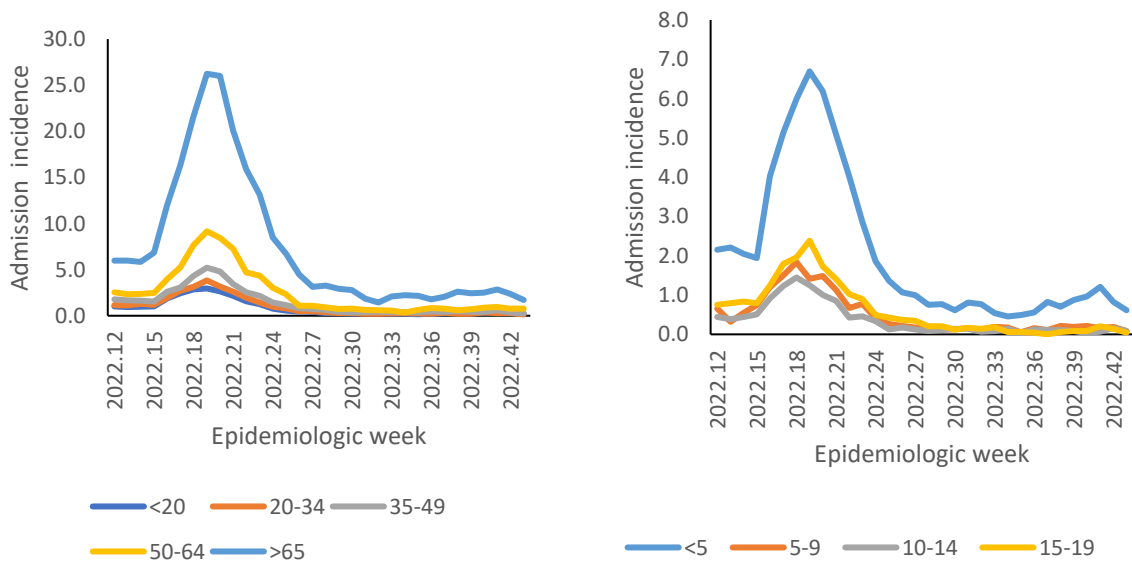


Figure 4: Incidence risk of COVID-19 admissions per 100,000 persons, by age group and epidemiologic week of diagnosis, South Africa, 19 March 2022-29 October 2022

Epidemiological and demographic trends in in-hospital mortality

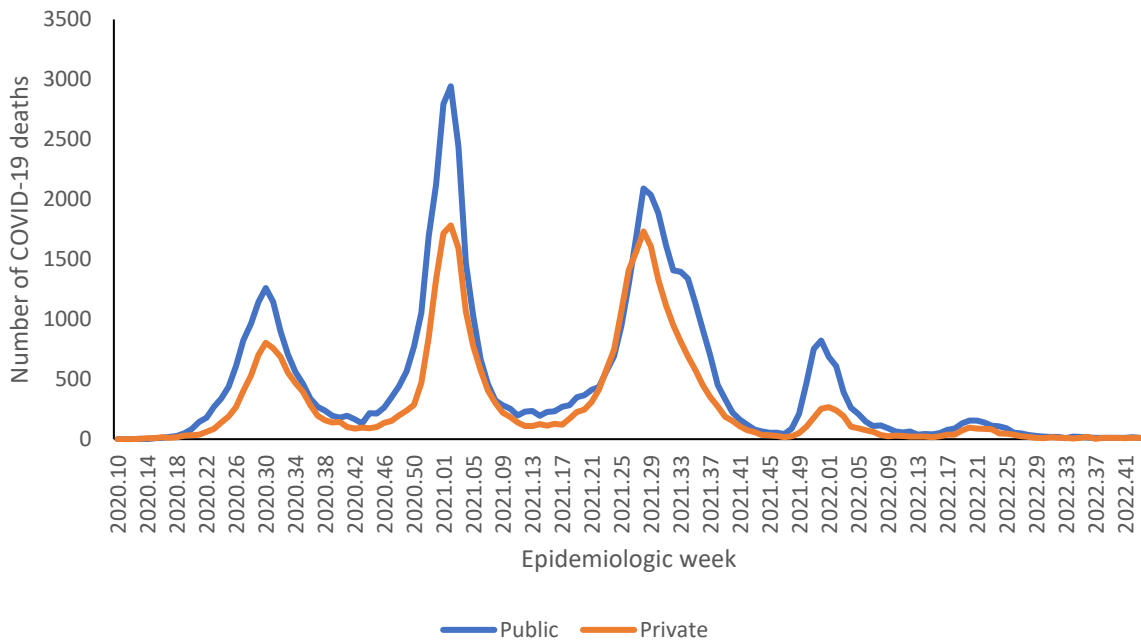


Figure 5: Number of reported COVID-19 in-hospital deaths, by health sector and epidemiologic week, South Africa, 5 March 2020-29 October 2022, N=104,439

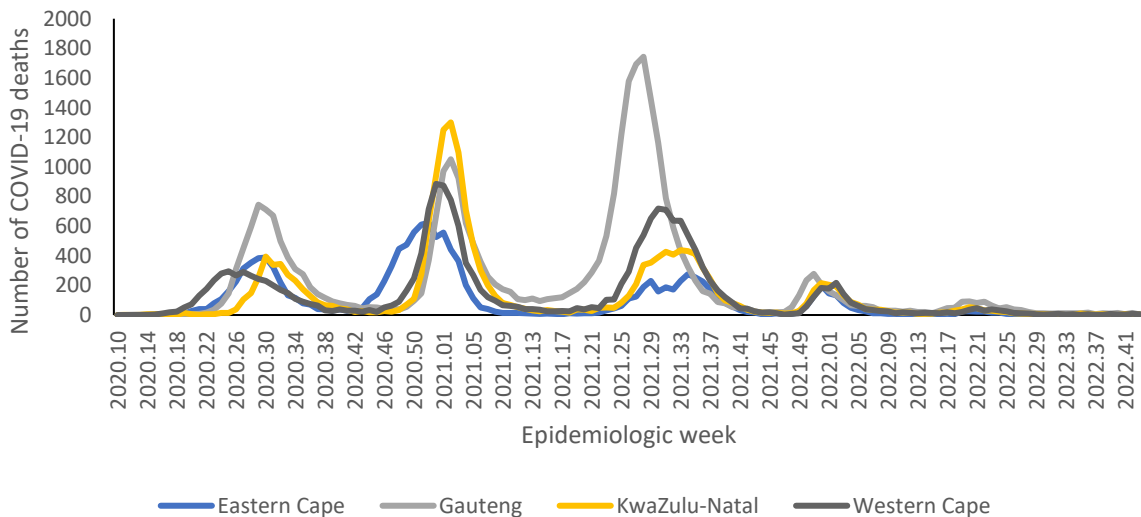


Figure 6a: Number of reported COVID-19 in-hospital deaths, by province with highest deaths and epidemiologic week of death, South Africa, 5 March 2020-29 October 2022, N=104,439

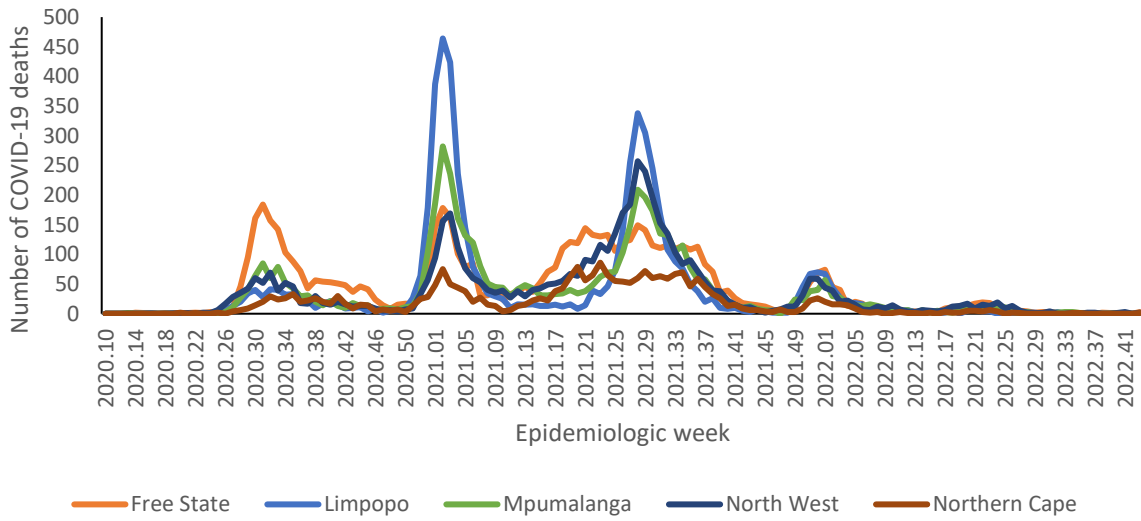


Figure 6b: Number of reported COVID-19 in-hospital deaths, by province with lowest deaths and epidemiologic week of death, South Africa, 5 March 2020-29 October 2022, N=104,439

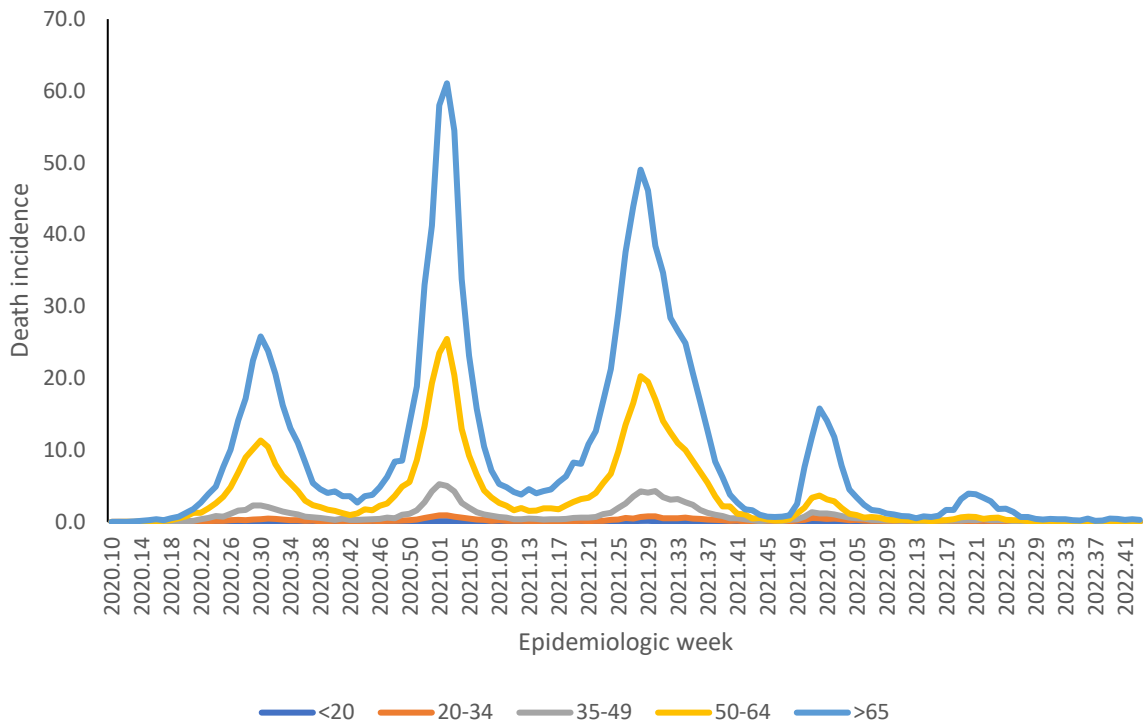


Figure 7: Incidence risk of COVID-19 in-hospital deaths per 100,000 persons, by age group and epidemiologic week of death, South Africa, 5 March 2020-29 October 2022, N=104,439

Provincial trends

Table 2: Number and cumulative incidence risk of COVID-19 hospitalisations and in-hospital deaths per 100,000 persons by province, South Africa, 5 March 2020-29 October 2022.

Province	Provincial Population mid 2020*	Cumulative admissions	Cumulative incidence risk of admissions / 100,000	Cumulative deaths	Cumulative incidence risk of deaths / 100,000
Eastern Cape	6676590	48864	731.9	13309	199.3
Free State	2932441	32721	1115.8	6161	210.1
Gauteng	15810388	160 968	1018.1	30699	194.2
KwaZulu-Natal	11513575	89649	778.6	17601	152.9
Limpopo	5926724	21215	358.0	5332	90.0
Mpumalanga	4743584	23075	486.4	4930	103.9
North West	4122854	34 280	831.5	5020	121.8
Northern Cape	1303047	11 916	914.5	2459	188.7
Western Cape	7113776	121 510	1708.1	18928	266.1
South Africa	60142978	544 198	904.8	104 439	173.7

*StatsSA mid-year population estimates 2020

Table 3: Previous 14 days and current 14 days daily average COVID-19 admissions and deaths and percentage changes, South Africa, 1 October-29 October 2022.

Province	Hospital admissions		Percentage change in admissions	Hospital deaths		Percentage change in deaths
	Previous 14 days average admissions	Current 14 days average admissions		Previous 14 days average deaths	Current 14 days average deaths	
Eastern Cape	3.57	2.43	-32.00	0.36	0.29	-20.00
Free State	2.64	1.36	-48.65	0.07	0.21	200.00
Gauteng	20.86	13.07	-37.33	1.36	1.36	0.00
KwaZulu-Natal	7.86	6.36	-19.09	0.36	0.50	40.00
Limpopo	1.00	0.93	-7.14	0.00	0.00	0.00
Mpumalanga	1.00	1.07	7.14	0.14	0.00	-100.00
North West	2.36	1.79	-24.24	0.29	0.14	-50.00
Northern Cape	0.21	0.21	0.00	0.00	0.07	0.00
Western Cape	10.64	9.21	-13.42	0.50	0.86	71.43

* Reporting of new admissions in the most recent week may be delayed

Table 4: Previous 7 days and current 7 days daily average COVID-19 admissions and deaths and percentage changes, South Africa, 15 October-29 October 2022.

Province	Hospital admissions		Percentage change in admissions	Hospital deaths		Percentage change in deaths
	Previous 7 days average admissions	Current 7 days average admissions		Previous 7 days average deaths	Current 7 days average deaths	
Eastern Cape	2.14	2.71	26.67	0.29	0.29	0.00
Free State	1.14	1.57	37.50	0.00	0.43	0.00
Gauteng	15.86	10.29	-35.14	2.14	0.57	-73.33
KwaZulu-Natal	7.29	5.43	-25.49	0.43	0.57	33.33
Limpopo	0.86	1.00	16.67	0.00	0.00	0.00
Mpumalanga	1.43	0.71	-50.00	0.00	0.00	0.00
North West	2.71	0.86	-68.42	0.00	0.29	0.00
Northern Cape	0.14	0.29	100.00	0.00	0.14	0.00
Western Cape	11.29	7.14	-36.71	1.00	0.71	-28.57

* Reporting of new admissions in the most recent week may be delayed

Eastern Cape

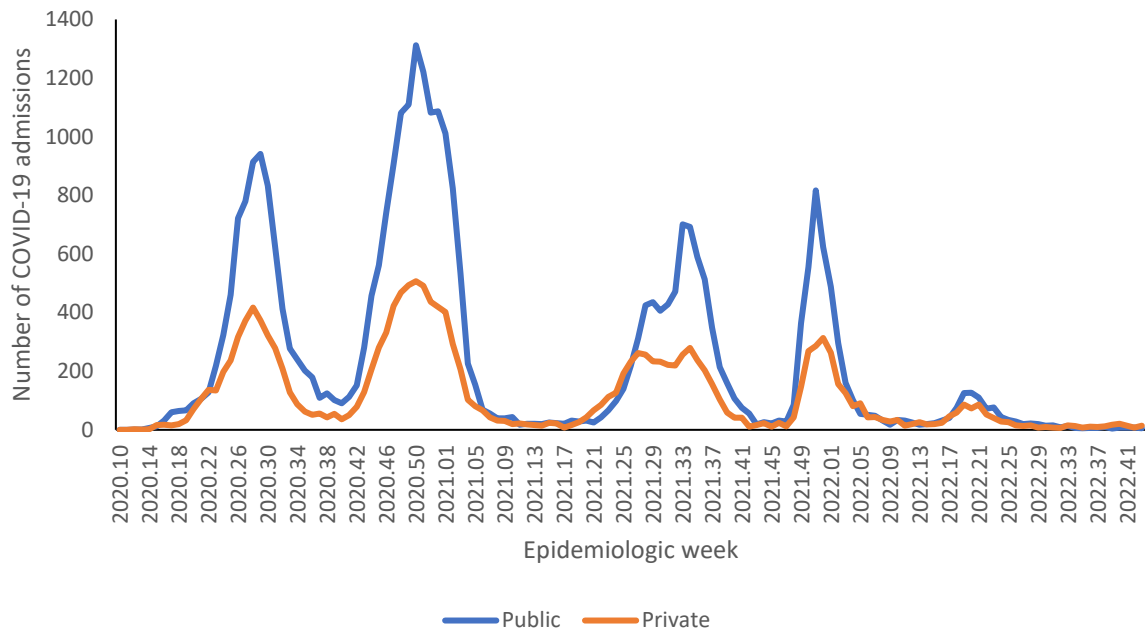


Figure 8: Number of reported COVID-19 admissions by health sector and epidemiologic week of diagnosis, Eastern Cape, 5 March 2020-29 October 2022, N=48,864

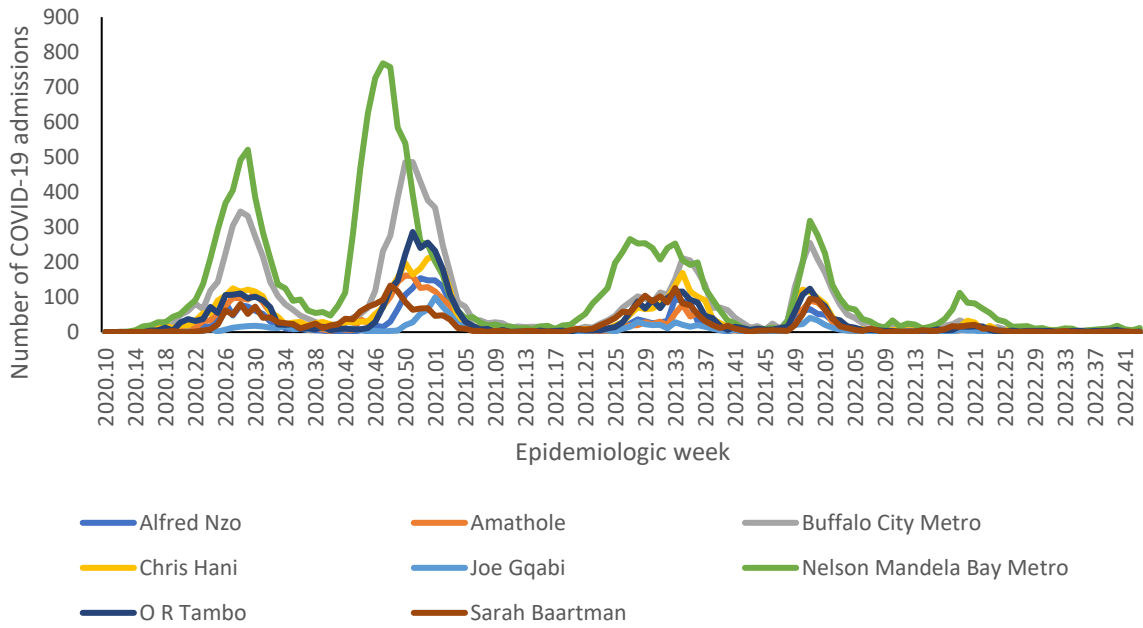


Figure 9: Number of reported COVID-19 admissions, by district and epidemiologic week, Eastern Cape, 5 March 2020-29 October 2022, N=48,864

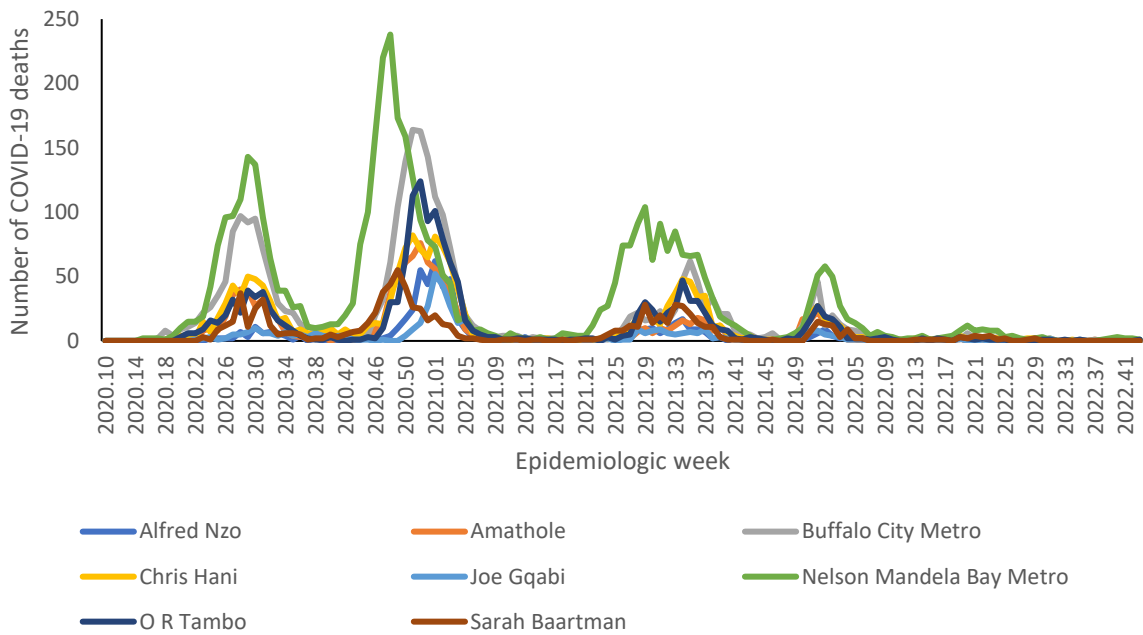


Figure 10: Number of reported COVID-19 in-hospital deaths, by district and epidemiologic week, Eastern Cape, 5 March 2020-29 October 2022, N=13,309

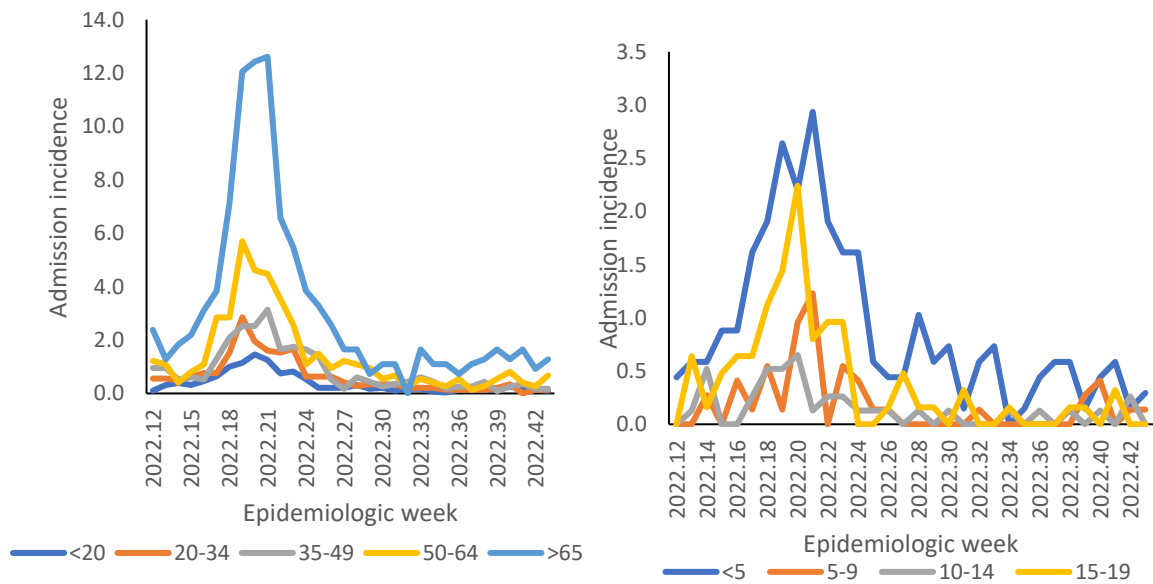


Figure 11: Incidence risk of COVID-19 admissions per 100,000 persons by age group and epidemiologic week of diagnosis, Eastern Cape, 19 March 2022-29 October 2022

Table 5: Previous 14 days and current 14 days average COVID-19 admissions and deaths and percentage changes, Eastern Cape, 1 October-29 October 2022.

District	Previous 14 days admissions average	Current 14 days admissions average	Percentage change in admissions	Previous 14 days deaths average	Current 14 days deaths average	Percentage change in deaths
Alfred Nzo	0.14	0.07	-50.00	0.00	0.00	0.00
Amathole	0.14	0.00	-100.00	0.00	0.00	0.00
Buffalo City Metro	0.29	0.07	-75.00	0.00	0.00	0.00
Chris Hani	0.36	0.79	120.00	0.00	0.00	0.00
Joe Gqabi	0.00	0.07	0.00	0.00	0.00	0.00
Nelson Mandela Bay	1.86	1.21	-34.62	0.36	0.21	-40.00
O R Tambo	0.57	0.14	-75.00	0.00	0.07	0.00
Sarah Baartman	0.21	0.07	-66.67	0.00	0.00	0.00



Free State

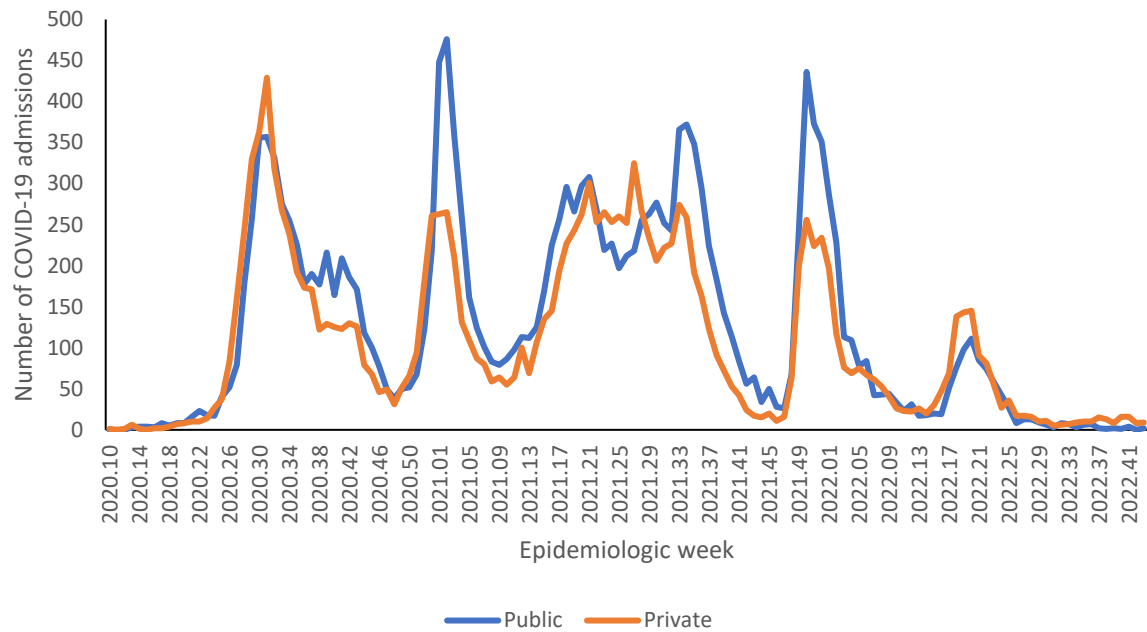


Figure 12: Number of reported COVID-19 admissions by health sector and epidemiologic week of diagnosis, Free State, 5 March 2020-29 October 2022, N=32,721

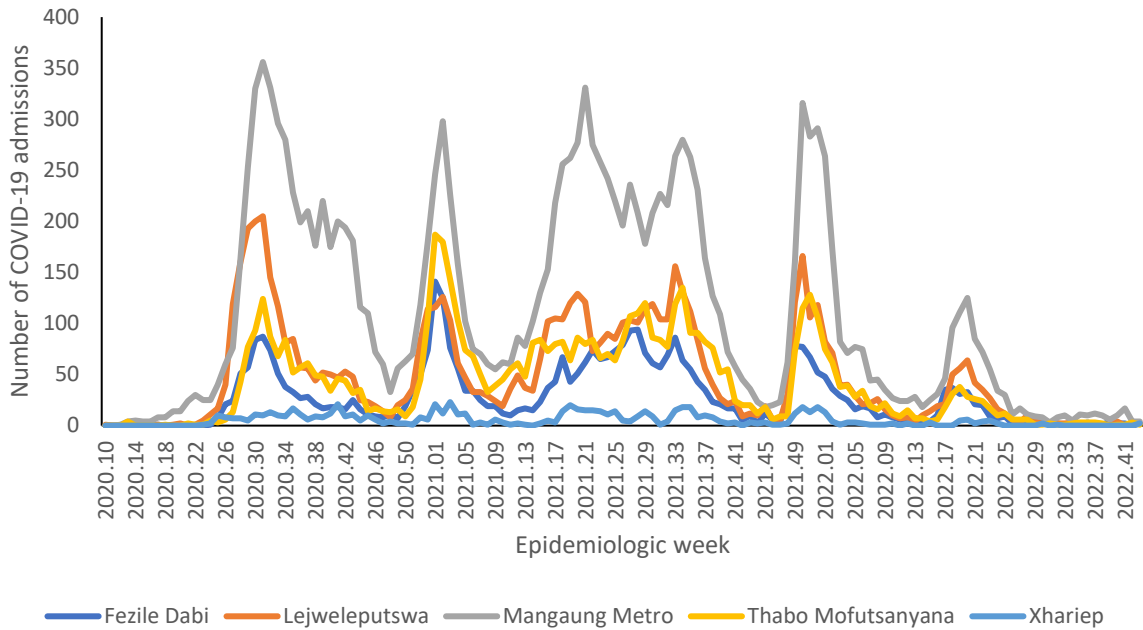


Figure 13: Number of reported COVID-19 admissions, by district and epidemiologic week, Free State, 5 March 2020-29 October 2022, N=32,721

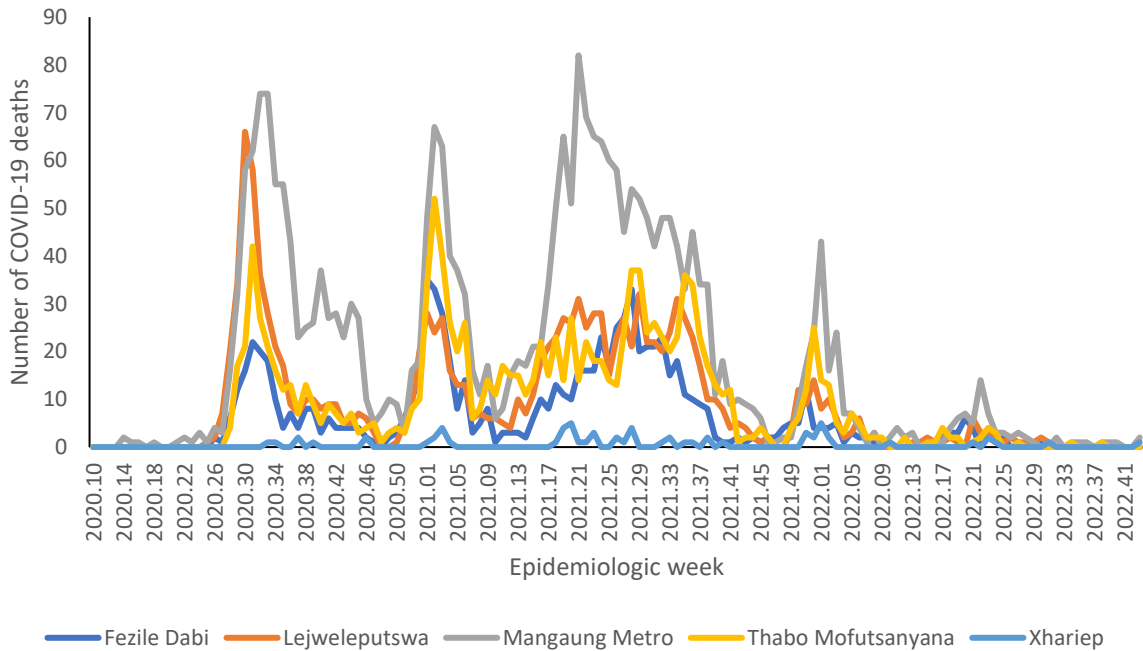


Figure 14: Number of reported COVID-19 in-hospital deaths, by district and epidemiologic week, Free State, 5 March 2020-29 October 2022, N=6,161

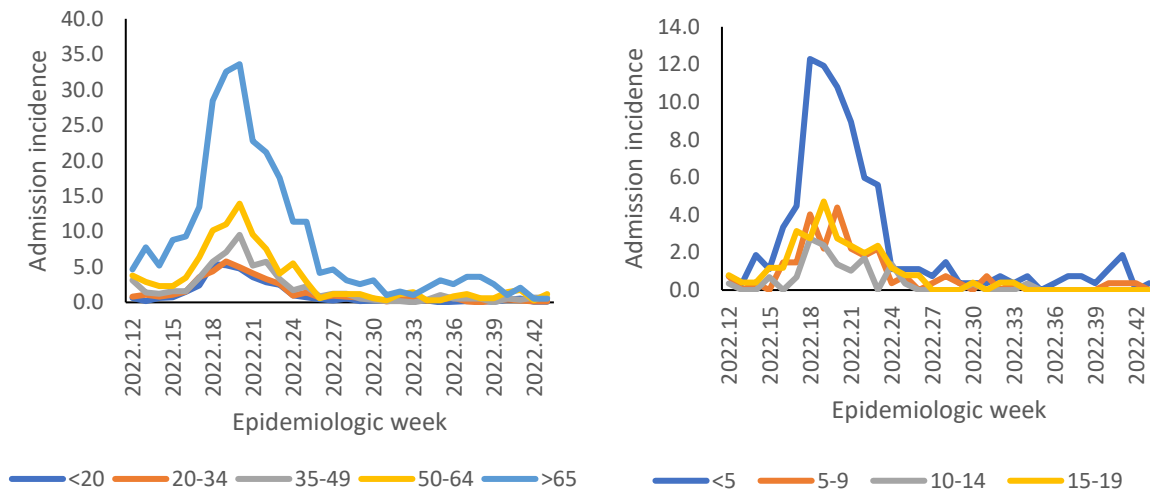


Figure 15: Incidence risk of COVID-19 admissions per 100,000 persons by age group and epidemiologic week of diagnosis, Free State, 19 March 2022- 29 October 2022



Table 6: Previous 14 days and current 14 days average COVID-19 admissions and deaths and percentage changes, Free State, 1 October-29 October 2022.

District	Previous 14 days admissions average	Current 14 days admissions average	Percentage change in admissions	Previous 14 days deaths average	Current 14 days deaths average	Percentage change in deaths
Fezile Dabi	0.29	0.14	-50.00	0.00	0.00	0.00
Lejweleputswa	0.29	0.21	-25.00	0.00	0.00	0.00
Mangaung Metro	1.93	0.57	-70.37	0.07	0.14	100.00
Thabo Mofutsanyana	0.14	0.29	100.00	0.00	0.00	0.00
Xhariep	0.00	0.14	0.00	0.00	0.07	0.00

Gauteng

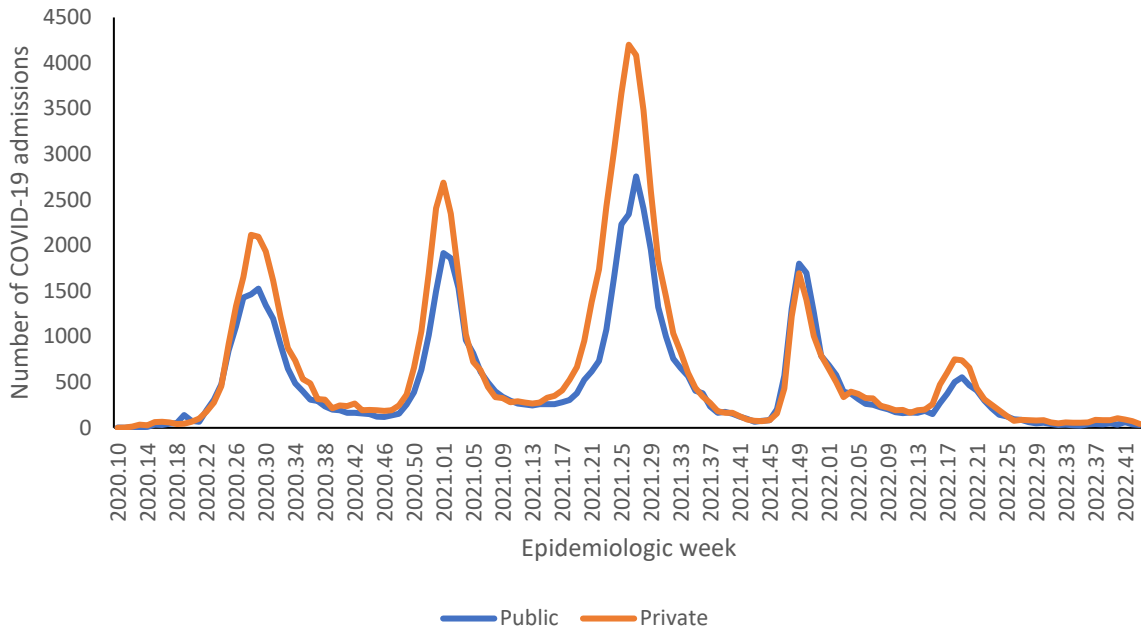


Figure 16: Number of reported COVID-19 admissions by health sector and epidemiologic week of diagnosis, Gauteng, 5 March 2020-29 October 2022, N=160,968

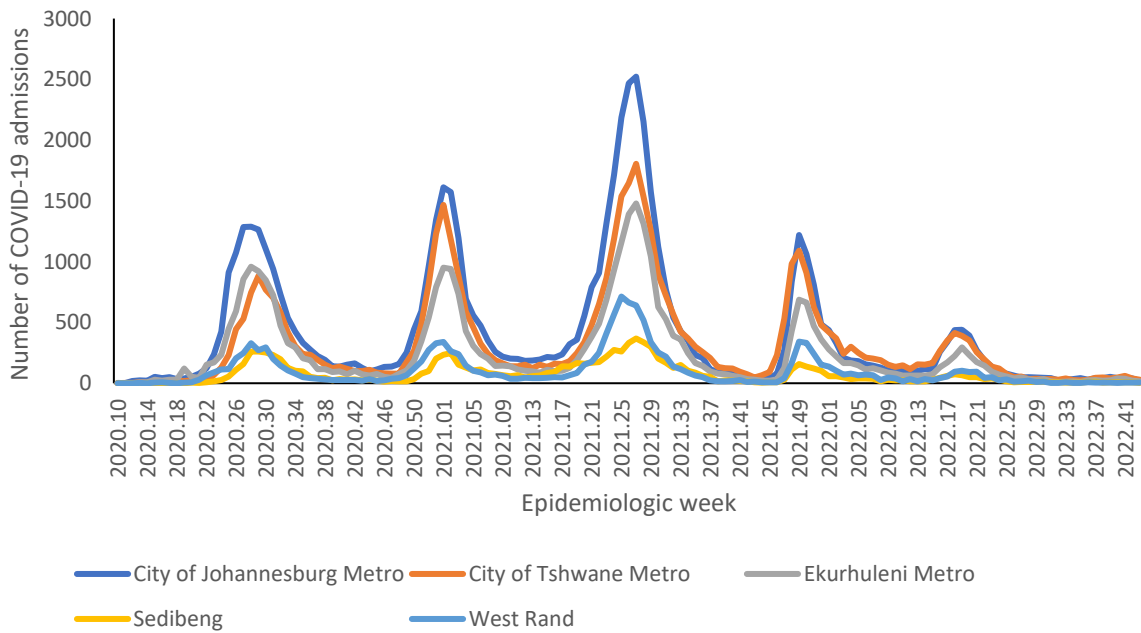


Figure 17: Number of reported COVID-19 admissions, by district and epidemiologic week, Gauteng, 5 March 2020-29 October 2022, N=160,968

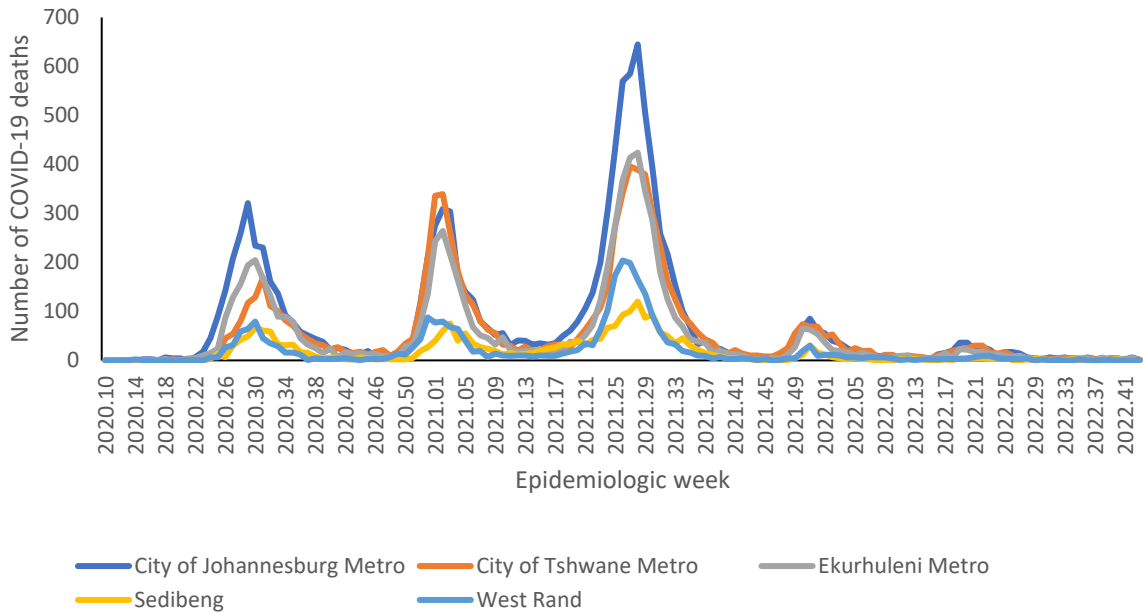


Figure 18: Number of reported COVID-19 in-hospital deaths, by district and epidemiologic week, Gauteng, 5 March 2020-29 October 2022, N=30,699

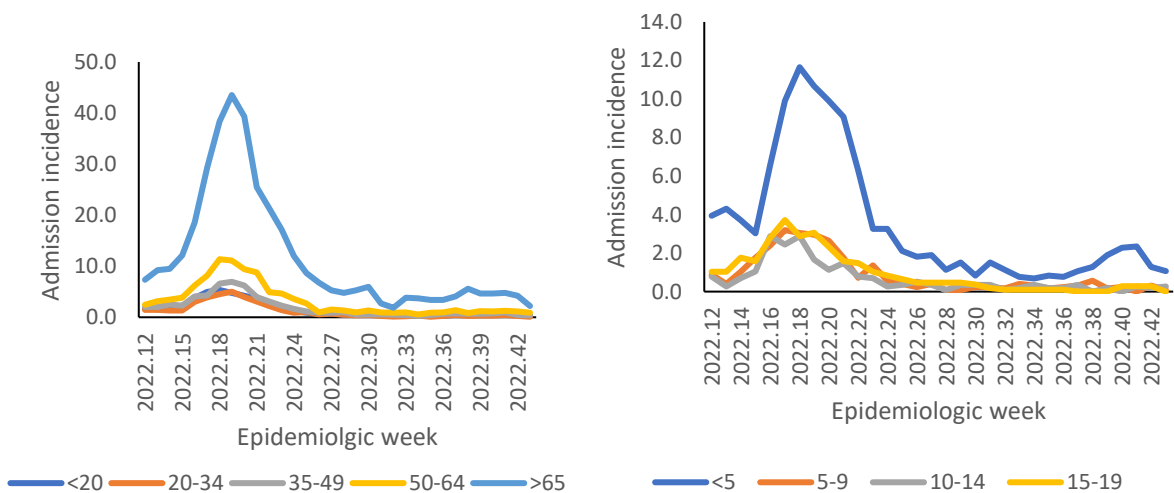


Figure 19: Incidence risk of COVID-19 admissions per 100,000 persons, per age group and epidemiologic week of diagnosis, Gauteng, 19 March 2022- 29 October 2022



Table 7: Previous 14 days and current 14 days average COVID-19 admissions and deaths and percentage changes, Gauteng, 1 October-29 October 2022.

District	Previous 14 days admissions average	Current 14 days admissions average	Percentage change in admissions	Previous 14 days deaths average	Current 14 days deaths average	Percentage change in deaths
City of Johannesburg Metro	6.14	4.14	-32.56	0.36	0.50	40.00
City of Tshwane Metro	7.64	4.86	-36.45	0.43	0.43	0.00
Ekurhuleni Metro	5.36	2.71	-49.33	0.36	0.36	0.00
Sedibeng	1.29	0.71	-44.44	0.21	0.00	-100.00
West Rand	0.43	0.64	50.00	0.00	0.07	0.00

KwaZulu-Natal

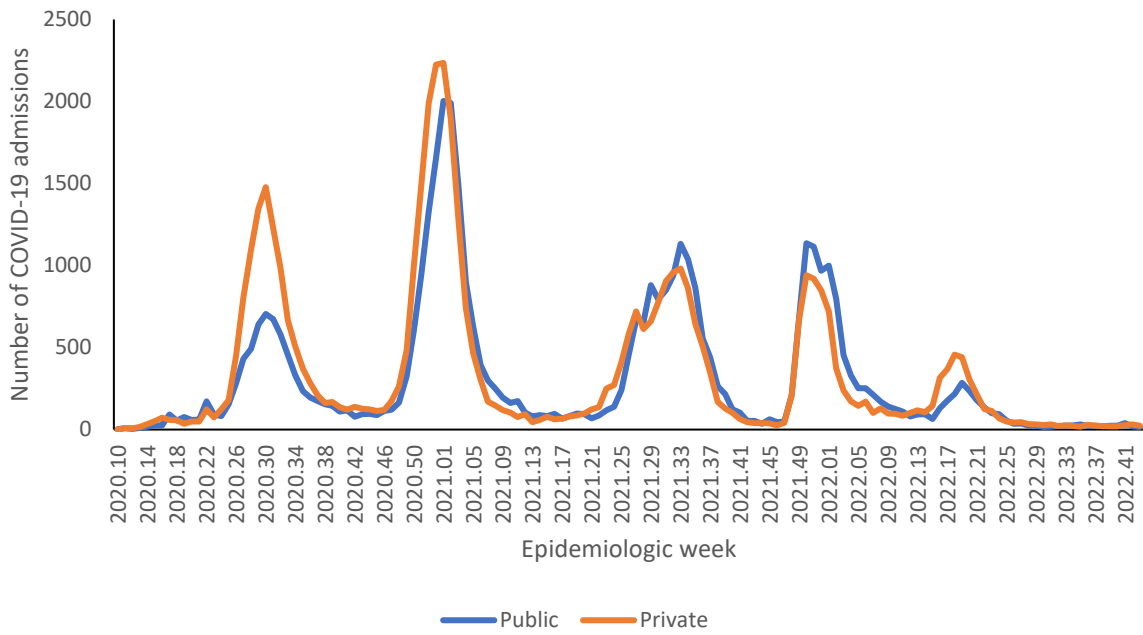


Figure 20: Number of reported COVID-19 admissions by health sector and epidemiologic week of diagnosis, KwaZulu-Natal, 5 March 2020-29 October 2022, N=89,649

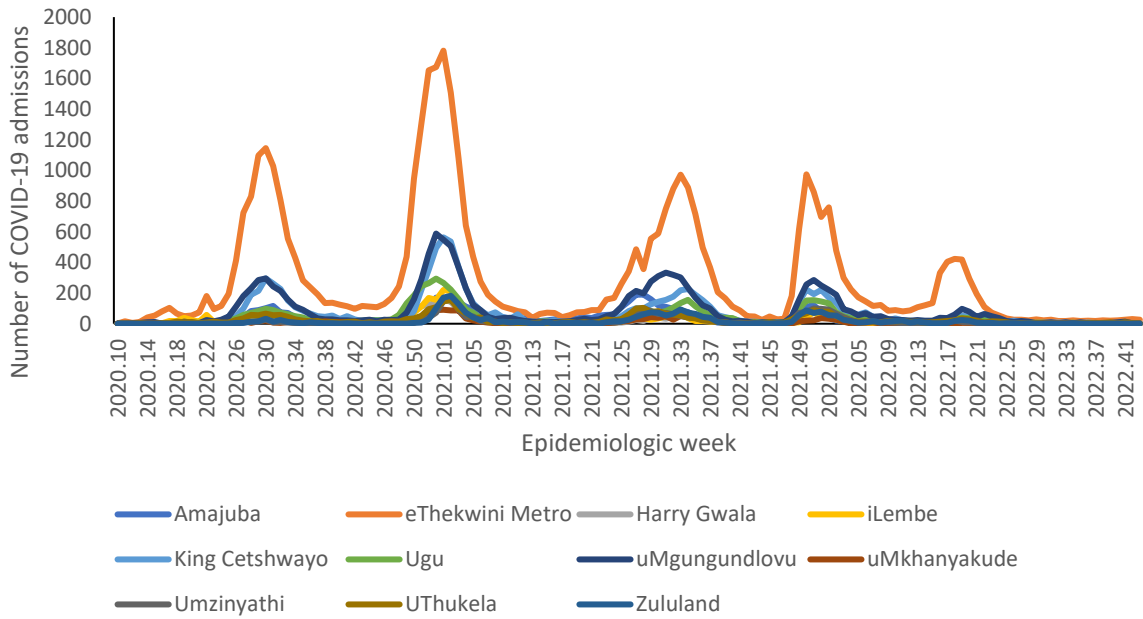


Figure 21: Number of reported COVID-19 admissions, by district and epidemiologic week, KwaZulu-Natal, 5 March 2020-29 October 2022, N=89,575

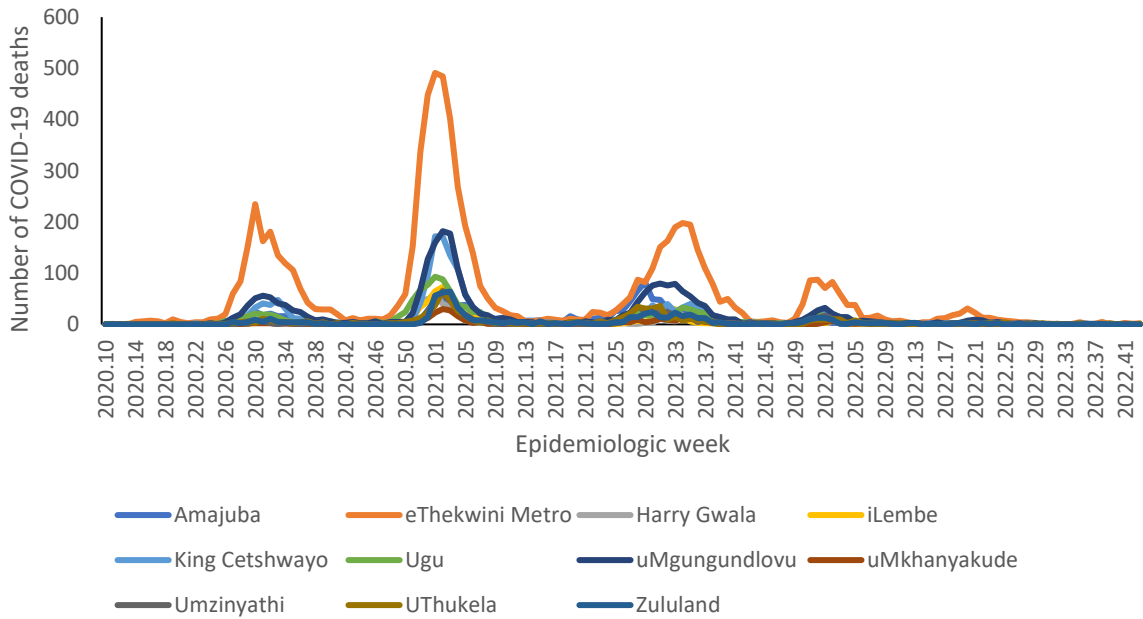


Figure 22: Number of reported COVID-19 in-hospital deaths, by district and epidemiologic week, KwaZulu-Natal, 5 March 2020-29 October 2022, N=17,601

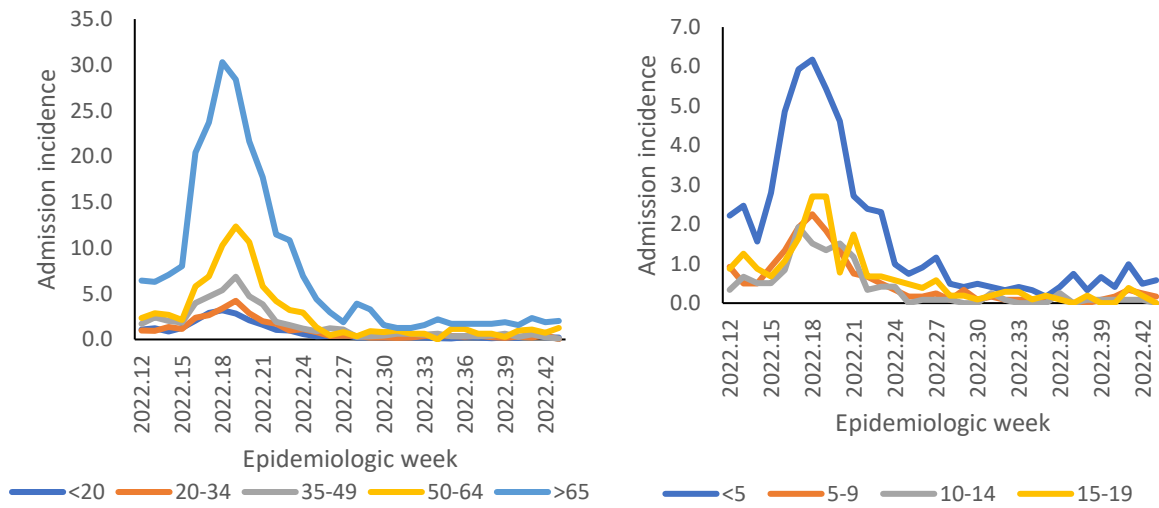


Figure 23: Incidence risk of COVID-19 admissions per 100,000 persons, by age group and epidemiologic week of diagnosis, KwaZulu-Natal, 19 March 2022- 29 October 2022

Table 8: Previous 14 days and current 14 days average COVID-19 admissions and deaths and percentage changes, KwaZulu-Natal, 1 October-29 October 2022.

District	Previous 14 days admissions average	Current 14 days admissions average	Percentage change in admissions	Previous 14 days deaths average	Current 14 days deaths average	Percentage change in deaths
Amajuba	0.29	0.07	-75.00	0.00	0.00	0.00
eThekweni Metro	3.50	4.00	14.29	0.21	0.21	0.00
Harry Gwala	0.43	0.36	-16.67	0.07	0.07	0.00
iLembe	0.00	0.07	0.00	0.00	0.00	0.00
King Cetshwayo	0.36	0.71	100.00	0.00	0.07	0.00
Ugu	0.43	0.43	0.00	0.00	0.07	0.00
uMgungundlovu	1.64	0.29	-82.61	0.00	0.00	0.00
uMkhanyakude	0.07	0.07	0.00	0.07	0.00	-100.00
Umzinyathi	0.14	0.07	-50.00	0.00	0.00	0.00
UThukela	0.79	0.29	-63.64	0.00	0.07	0.00
Zululand	0.21	0.00	-100.00	0.00	0.00	0.00



Limpopo

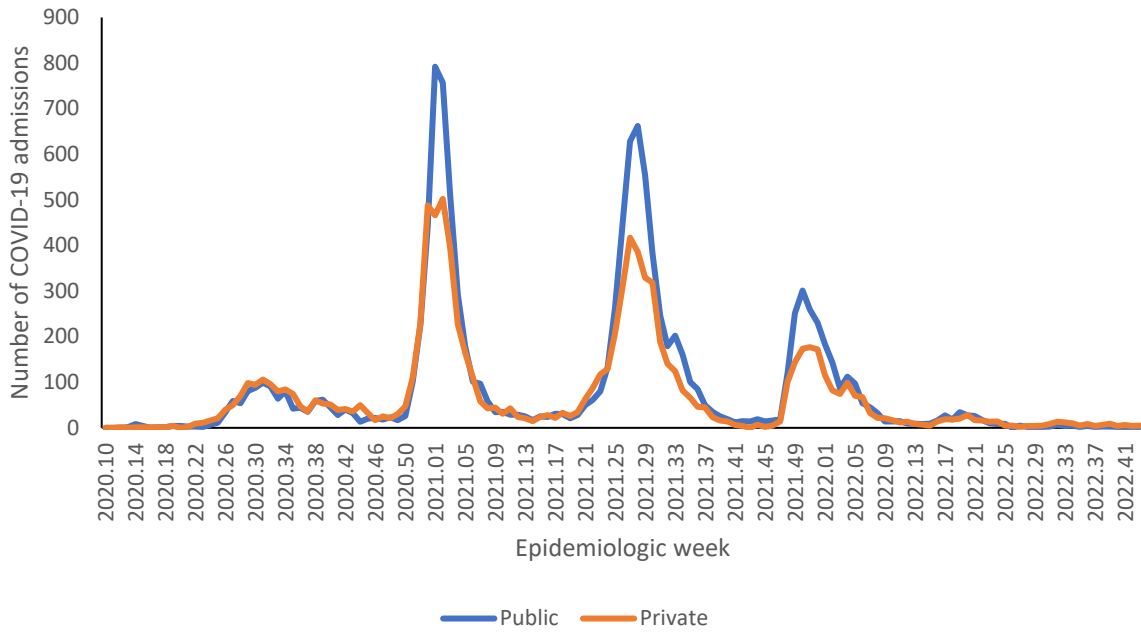


Figure 24: Number of reported COVID-19 admissions by health sector and epidemiologic week of diagnosis, Limpopo, 5 March 2020-29 October 2022, N=21,215

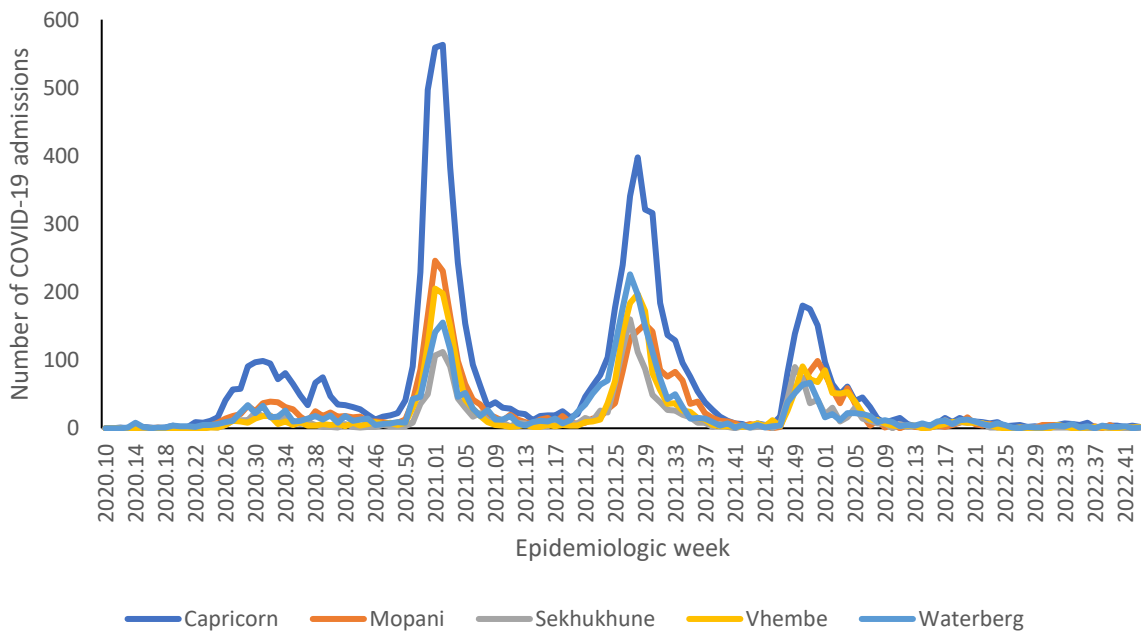


Figure 25: Number of reported COVID-19 admissions, by district and epidemiologic week, Limpopo, 5 March 2020-29 October 2022, N=21,215

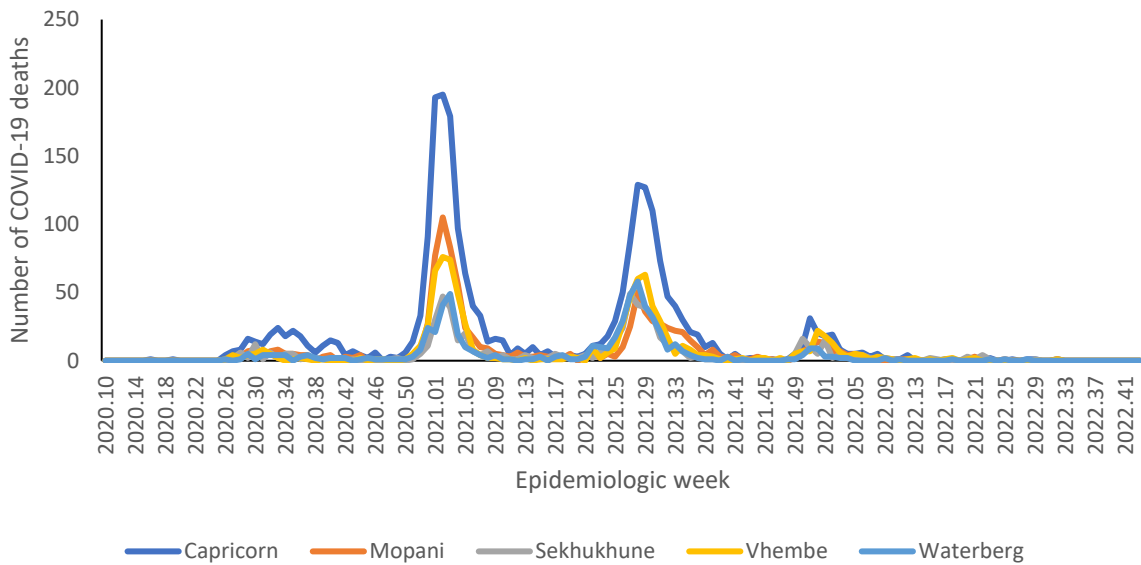


Figure 26: Number of reported COVID-19 in-hospital deaths, by district and epidemiologic week, Limpopo, 5 March 2020-29 October 2022, N=5,332

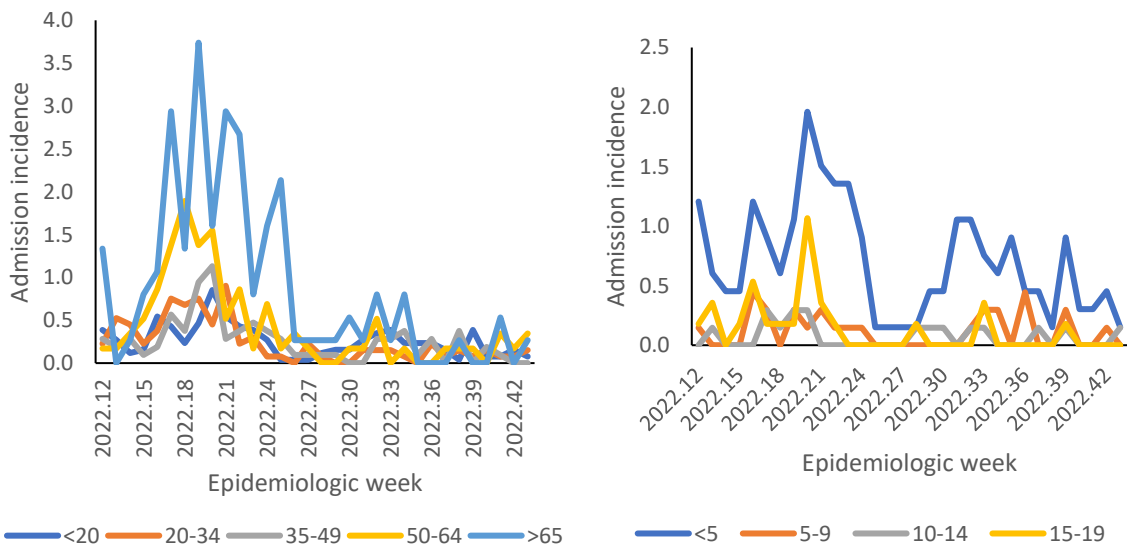


Figure 27: Incidence risk of COVID-19 admissions per 100,000 persons, by age group and epidemiologic week of diagnosis, Limpopo, 19 March 2022-29 October 2022

Table 9: Previous 14 days and current 14 days average COVID-19 admissions and deaths and percentage changes, Limpopo, 1 October-29 October 2022.

District	Previous 14 days admissions average	Current 14 days admissions average	Percentage change in admissions	Previous 14 days deaths average	Current 14 days deaths average	Percentage change in deaths
Capricorn	0.43	0.43	0.00	0.00	0.00	0.00
Mopani	0.07	0.07	0.00	0.00	0.00	0.00
Sekhukhune	0.00	0.14	0.00	0.00	0.00	0.00
Vhembe	0.14	0.21	50.00	0.00	0.00	0.00
Waterberg	0.36	0.07	-80.00	0.00	0.00	0.00



Mpumalanga

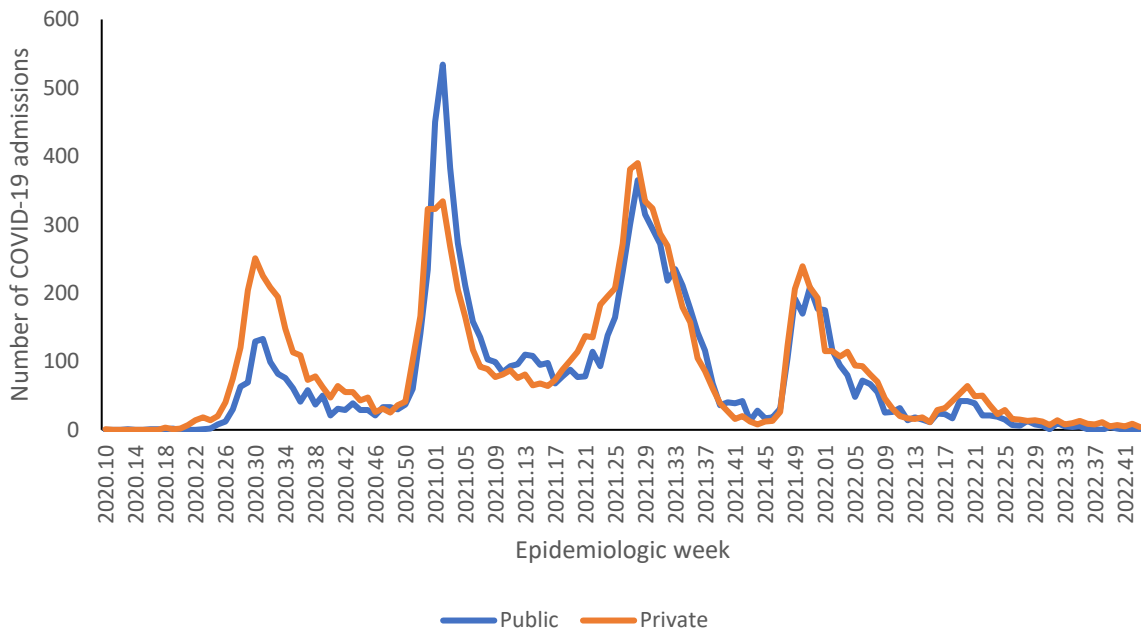


Figure 28: Number of reported COVID-19 admissions by health sector and epidemiologic week of diagnosis, Mpumalanga, 5 March 2020-29 October 2022, N=23,075

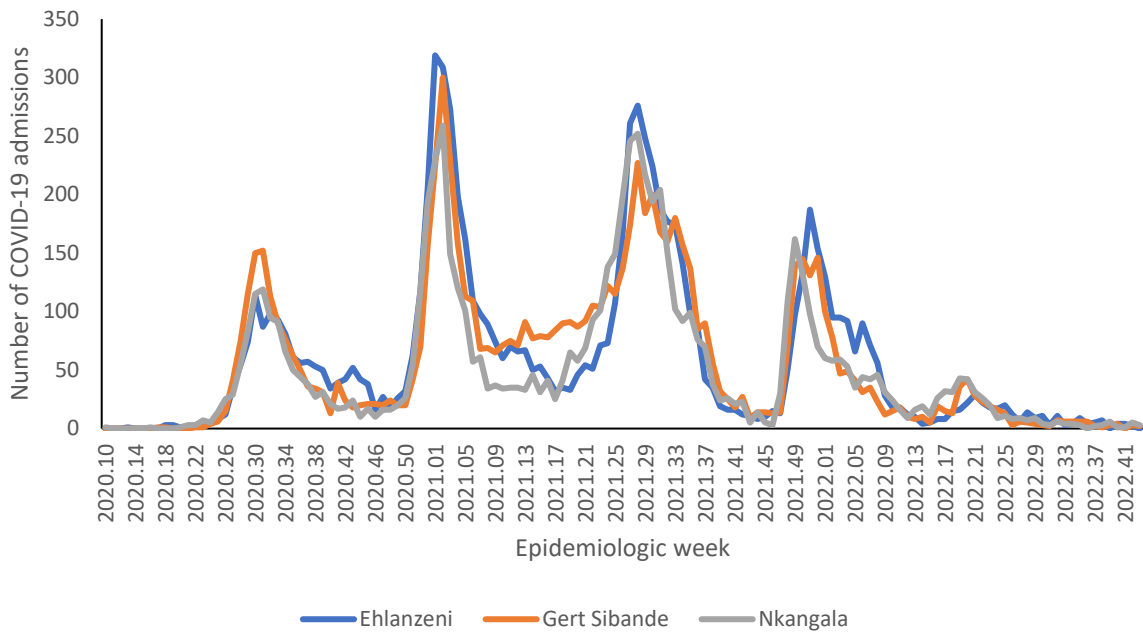


Figure 29: Number of reported COVID-19 admissions, by district and epidemiologic week, Mpumalanga, 5 March 2020-29 October 2022, N=23,075

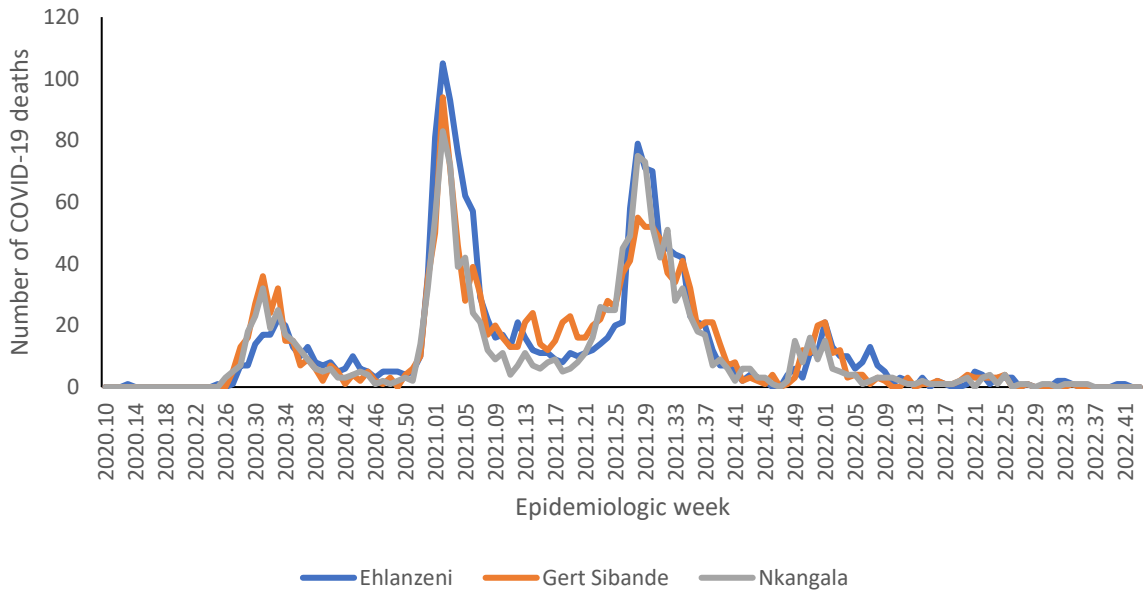


Figure 30: Number of reported COVID-19 in-hospital deaths, by district and epidemiologic week, Mpumalanga, 5 March 2020-29 October 2022, N=4,930

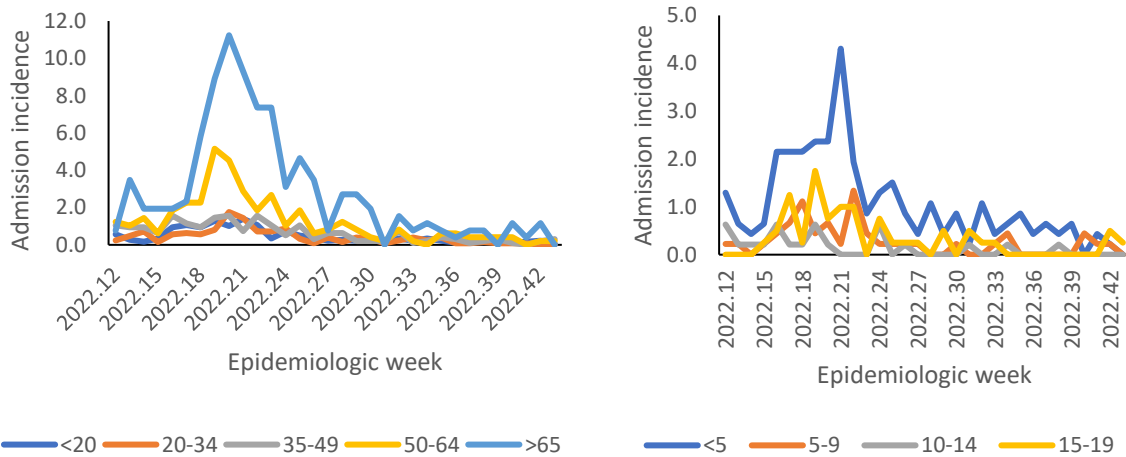


Figure 31: Incidence risk of COVID-19 admissions per 100,000 persons, by age group and epidemiologic week of diagnosis, Mpumalanga, 19 March 2022-29 October 2022

Table 10: Previous 14 days and current 14 days average COVID-19 admissions and deaths and percentage changes, Mpumalanga, 1 October-29 October 2022.

District	Previous 14 days admissions average	Current 14 days admissions average	Percentage change in admissions	Previous 14 days deaths average	Current 14 days deaths average	Percentage change in deaths
Ehlanzeni	0.57	0.14	-75.00	0.14	0.00	-100.00
Gert Sibande	0.29	0.36	25.00	0.00	0.00	0.00
Nkangala	0.14	0.57	300.00	0.00	0.00	0.00



North West

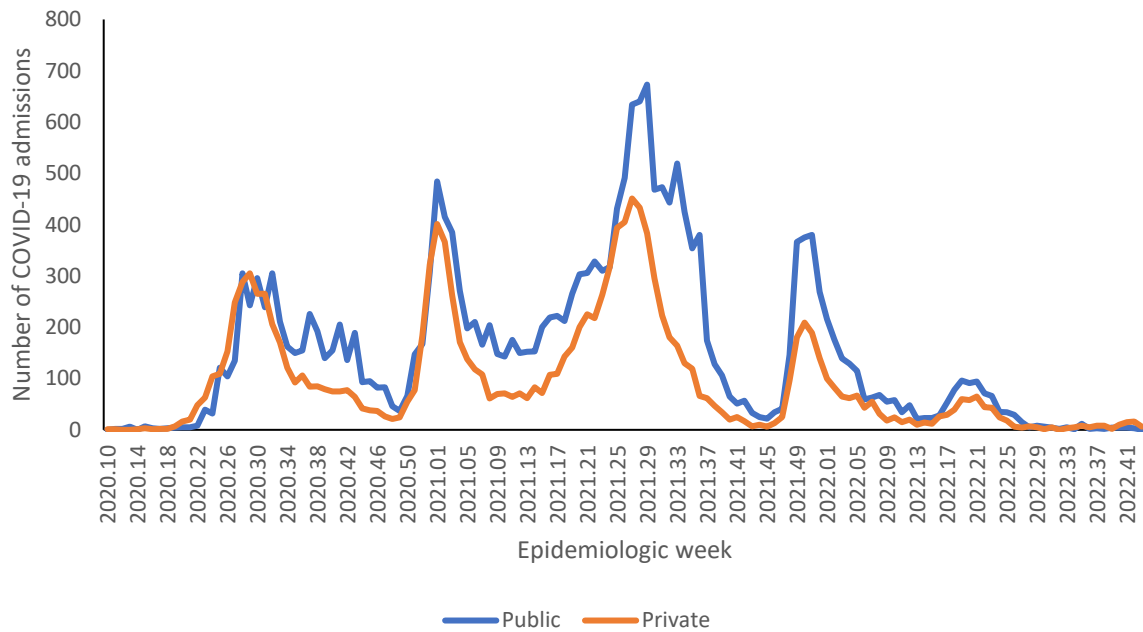


Figure 32: Number of reported COVID-19 admissions by health sector and epidemiologic week of diagnosis, North West, 5 March 2020-29 October 2022, N=34,280

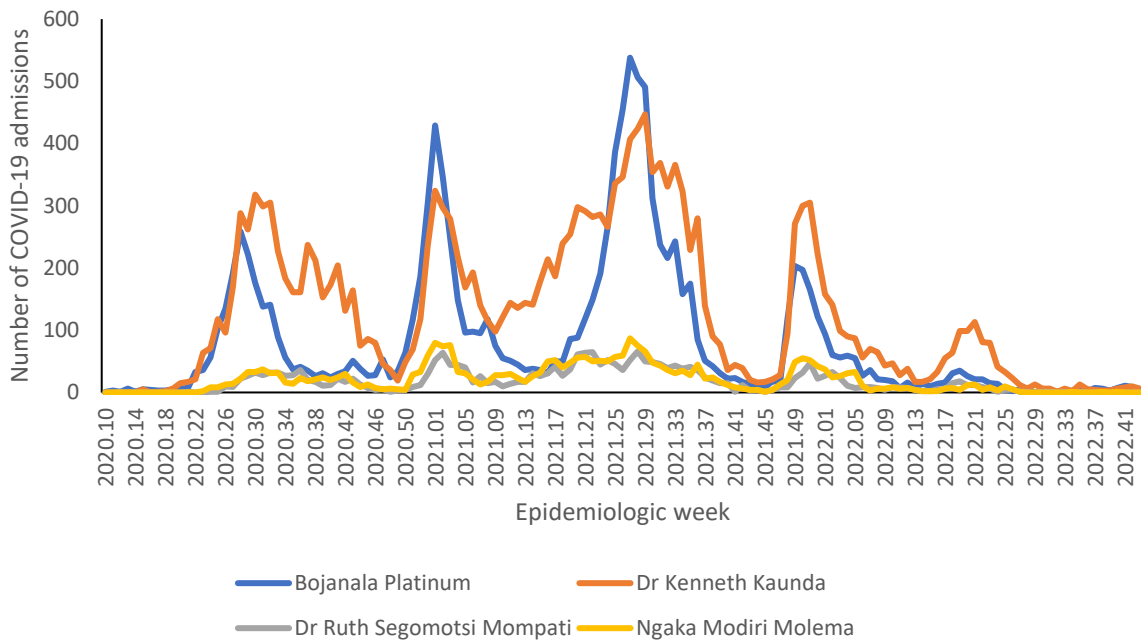


Figure 33: Number of reported COVID-19 admissions, by district and epidemiologic week, North West, 5 March 2020-29 October 2022, N=34,280

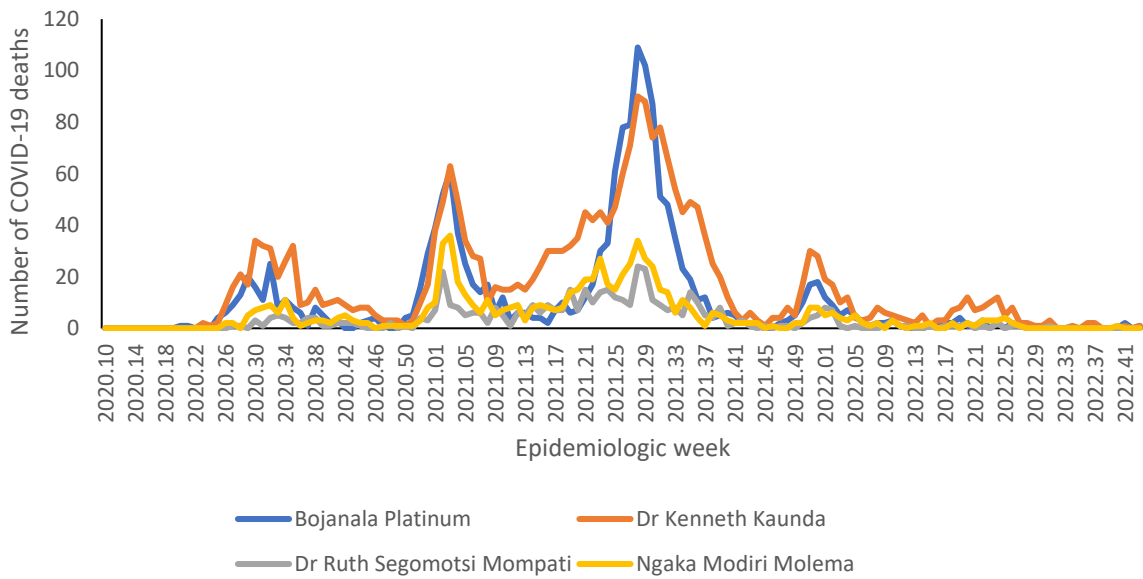


Figure 34: Number of reported COVID-19 in-hospital deaths, by district and epidemiologic week, North West, 5 March 2020-29 October 2022, N=5,020

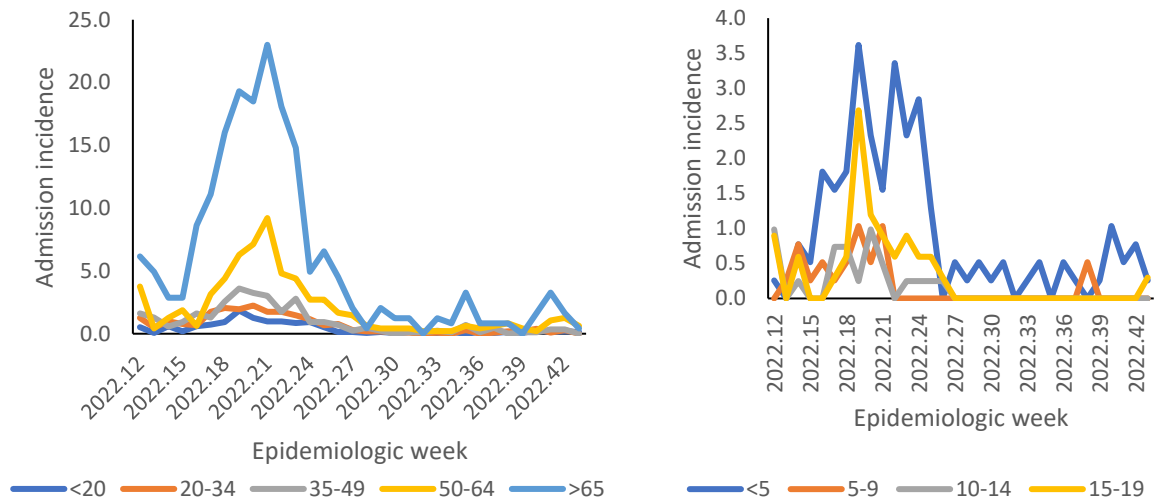


Figure 35: Incidence risk of COVID-19 admissions per 100,000 persons, by age group and epidemiologic week of diagnosis, North West, 19 March 2022-29 October 2022

Table 11: Previous 14 days and current 14 days average COVID-19 admissions and deaths and percentage changes, North West, 1 October-29 October 2022.

District	Previous 14 days admissions average	Current 14 days admissions average	Percentage change in admissions	Previous 14 days deaths average	Current 14 days deaths average	Percentage change in deaths
Bojanala Platinum	1.29	0.64	-50.00	0.14	0.07	-50.00
Dr Kenneth Kaunda	1.00	1.14	14.29	0.07	0.07	0.00
Dr Ruth Segomotsi Mompati	0.00	0.00	0.00	0.00	0.00	0.00
Ngaka Modiri Molema	0.07	0.00	-100.00	0.07	0.00	-100.00



Northern Cape

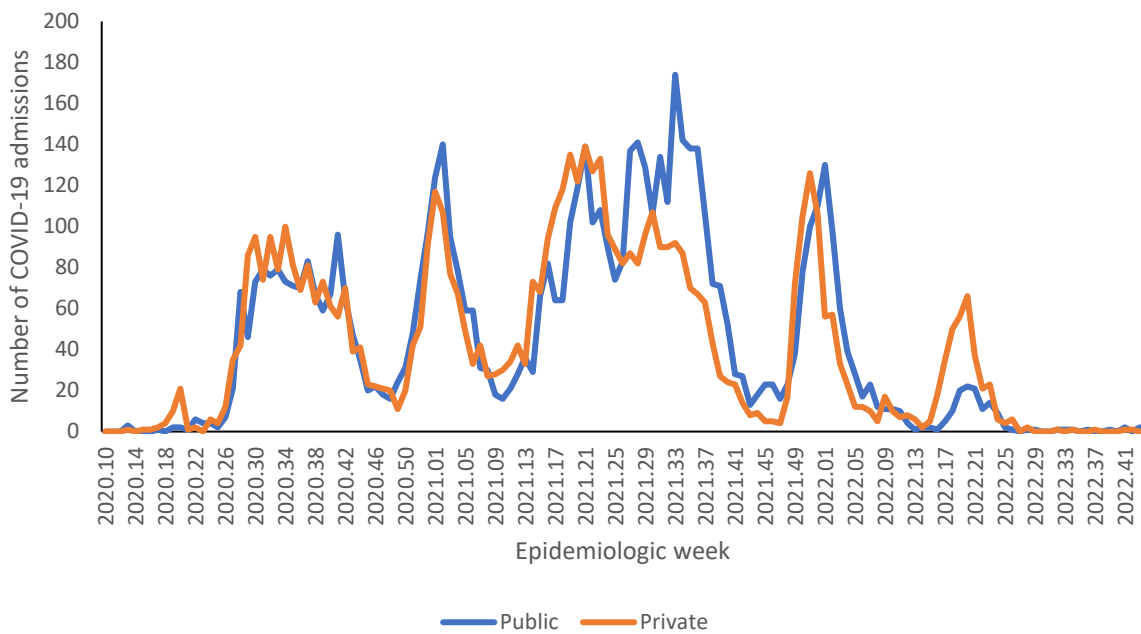


Figure 36: Number of reported COVID-19 admissions by health sector and epidemiologic week of diagnosis, Northern Cape, 5 March 2020-29 October 2022, N=11,916

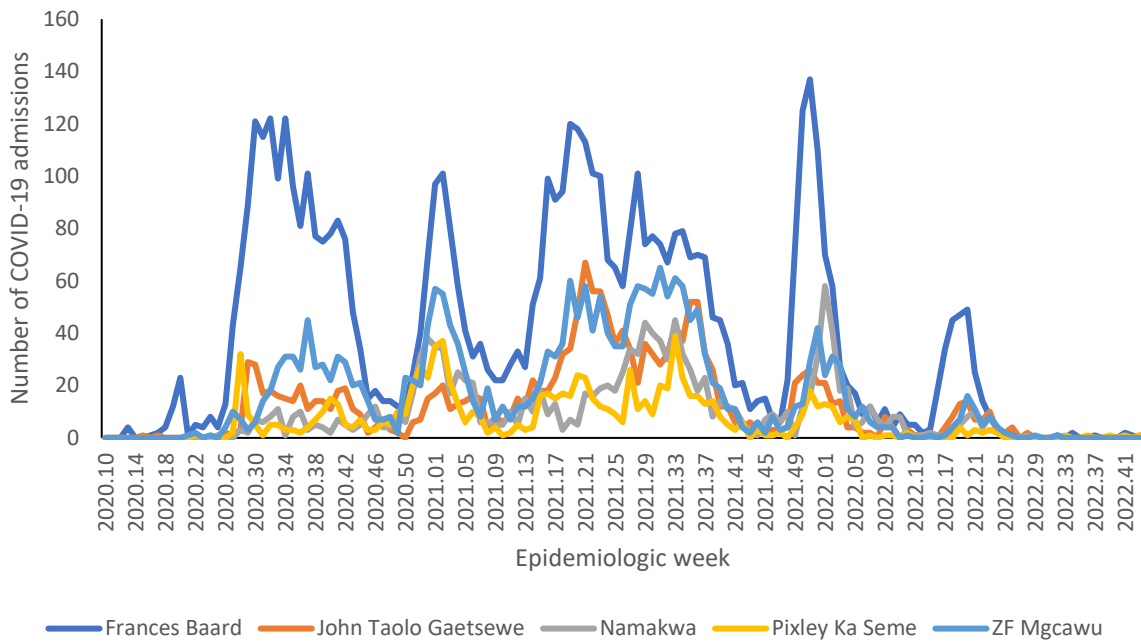


Figure 37: Number of reported COVID-19 admissions by district and epidemiologic week, Northern Cape, 5 March 2020-29 October 2022, N=11,916

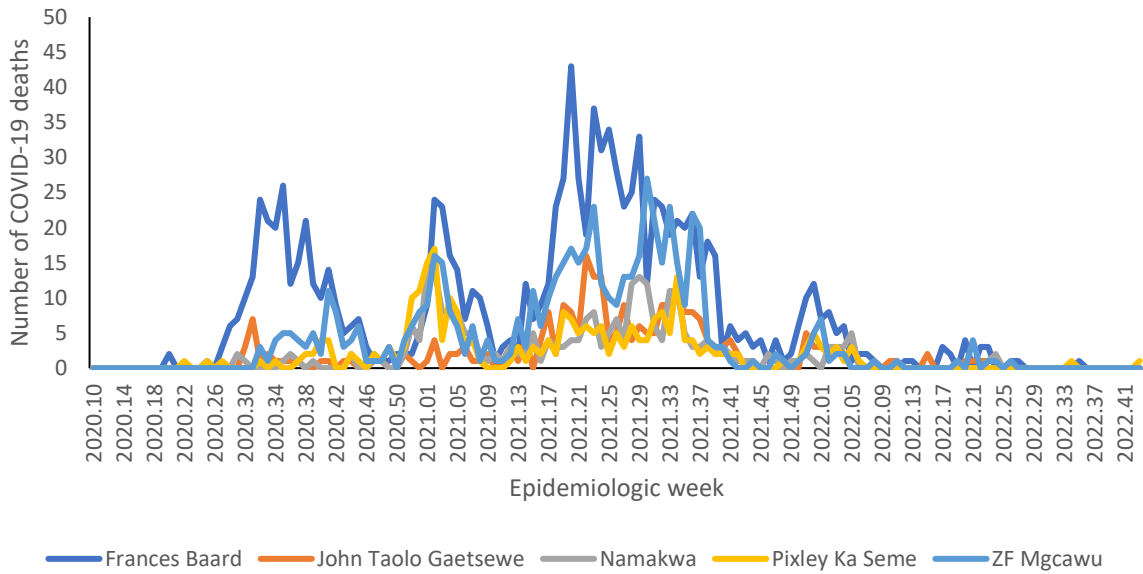


Figure 38: Number of reported COVID-19 in-hospital deaths, by district and epidemiologic week, Northern Cape, 5 March 2020-29 October 2022, N=2,459

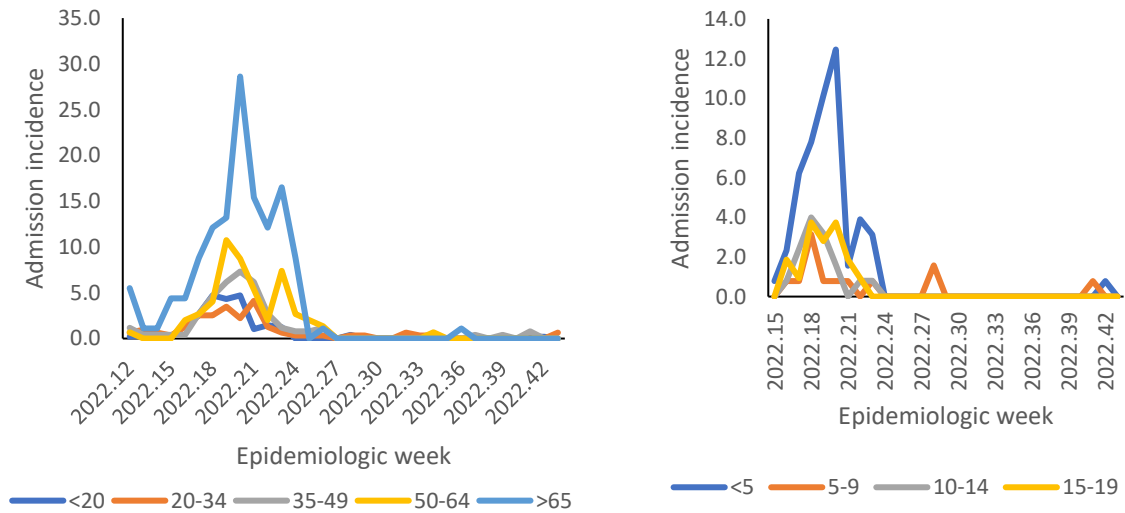


Figure 39: Incidence risk of COVID-19 admissions per 100,000 persons, by age group and epidemiologic week of diagnosis, Northern Cape, 19 March 2022- 29 October 2022



Table 12: Previous 14 days and current 14 days average COVID-19 admissions and deaths and percentage changes, Northern Cape, 1 October-29 October 2022.

District	Previous 14 days admissions average	Current 14 days admissions average	Percentage change in admissions	Previous 14 days deaths average	Current 14 days deaths average	Percentage change in deaths
Frances Baard	0.14	0.07	-50.00	0.00	0.00	0.00
John Taolo Gaetsewe	0.00	0.07	0.00	0.00	0.00	0.00
Namakwa	0.00	0.00	0.00	0.00	0.00	0.00
Pixley Ka Seme	0.07	0.07	0.00	0.00	0.07	0.00
ZF Mgcawu	0.00	0.00	0.00	0.00	0.00	0.00



Western Cape

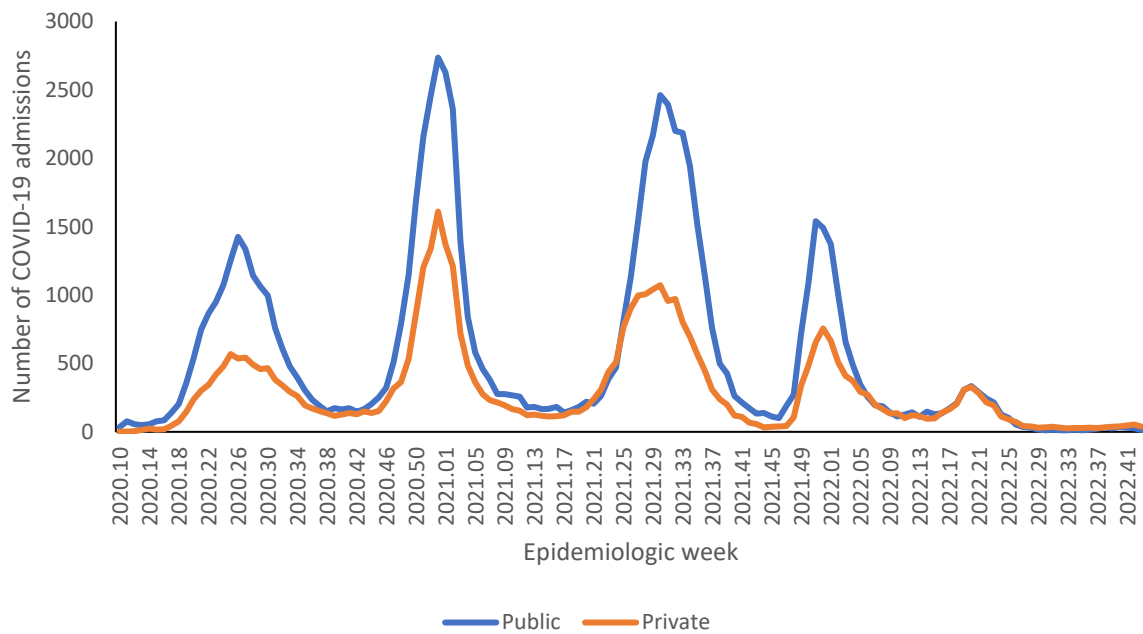


Figure 40: Number of reported COVID-19 admissions by health sector and epidemiologic week of diagnosis, Western Cape, 5 March 2020-29 October 2022, N=121,510

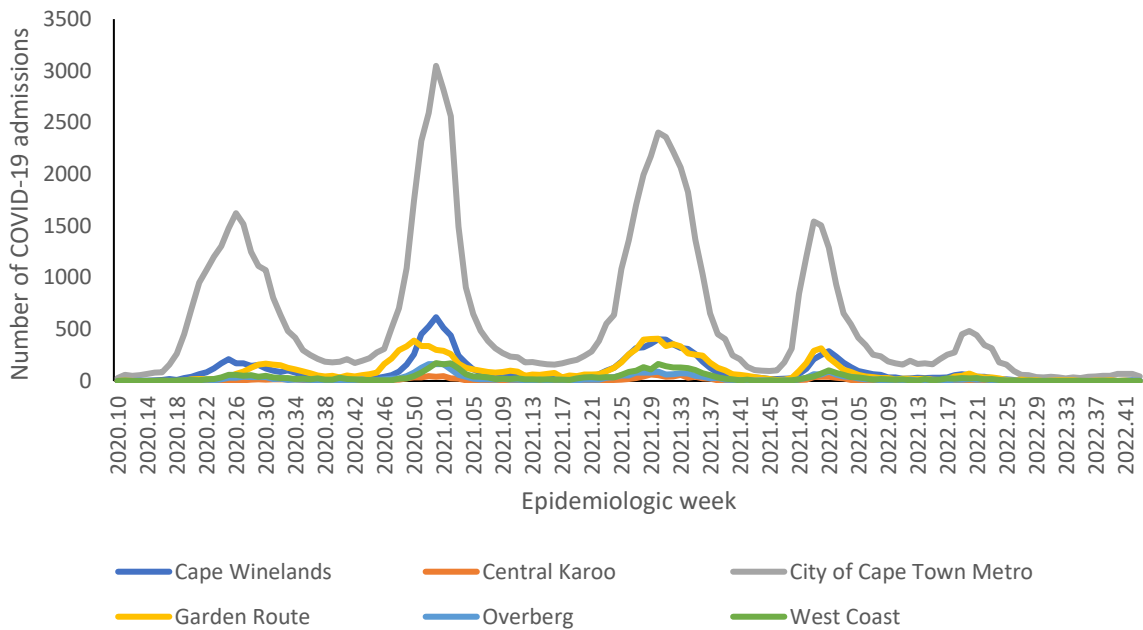


Figure 41: Number of reported COVID-19 admissions, by district and epidemiologic week, Western Cape, 5 March 2020-29 October 2022, N=121,510

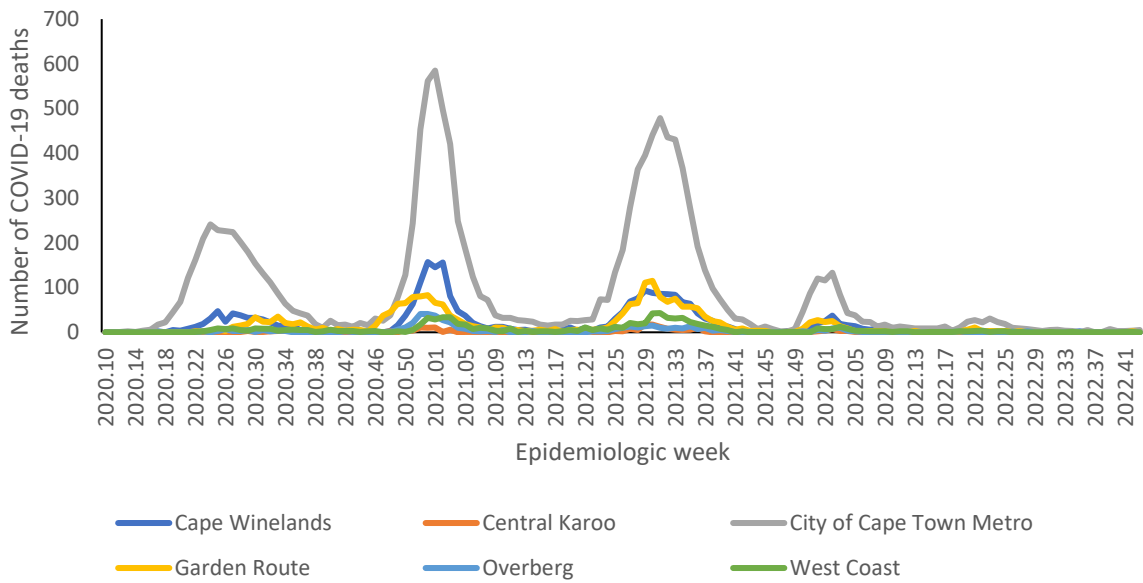


Figure 42: Number of reported COVID-19 in-hospital deaths, by district and epidemiologic week, Western Cape, 5 March 2020-29 October 2022, N=18,928

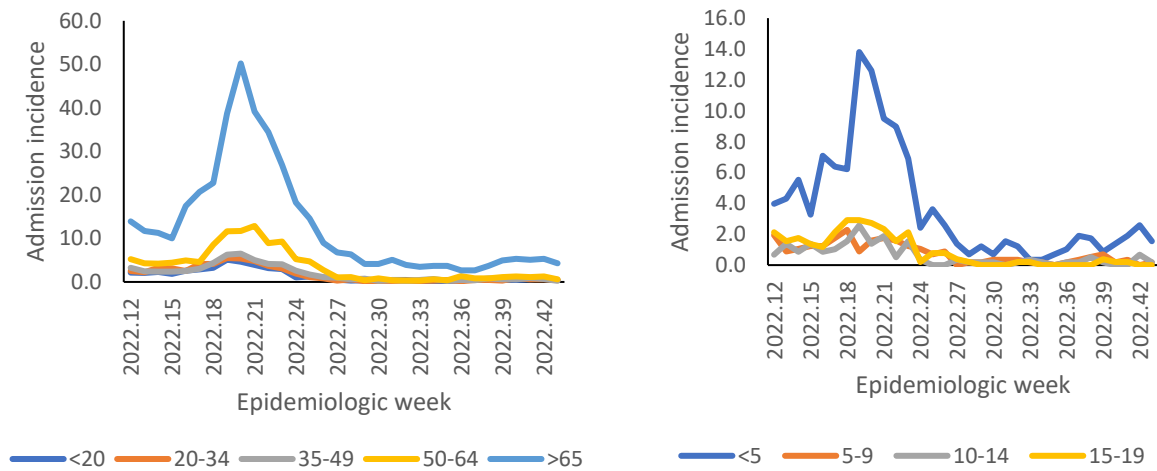


Figure 43: Incidence risk of COVID-19 admissions per 100,000 persons, by age group and epidemiological week of diagnosis, Western Cape, 19 March 2022- 29 October 2022



Table 13: Previous 14 days and current 14 days average COVID-19 admissions and deaths and percentage changes, Western Cape, 1 October-29 October 2022.

District	Previous 14 days admissions average	Current 14 days admissions average	Percentage change in admissions	Previous 14 days deaths average	Current 14 days deaths average	Percentage change in deaths
Cape Winelands	0.29	0.43	50.00	0.00	0.00	0.00
Central Karoo	0.00	0.00	0.00	0.00	0.00	0.00
City of Cape Town Metro	9.86	8.00	-18.84	0.43	0.64	50.00
Garden Route	0.29	0.21	-25.00	0.00	0.14	0.00
Overberg	0.00	0.57	0.00	0.00	0.00	0.00
West Coast	0.21	0.00	-100.00	0.07	0.07	0.00

Limitation

DATCOV now includes reporting from all hospitals with COVID-19 admissions, but many hospitals are yet to reach complete submission of historic data. Data quality in a surveillance system is dependent on the information submitted by healthcare institutions. It is not possible for the NICD to verify or check the quality of all these data, however, the NICD has built-in data quality checks. Delays in reporting of admissions and deaths may affect the numbers reported in the most recent week. The National Department of Health have recruited data capturers to support hospitals to improve data submission.

As hospitals reached capacity, admission criteria may change and therefore influence trends and inferences about the progression of the epidemic. DATCOV only reports hospital-based admissions and deaths and therefore does not include deaths occurring outside hospitals. DATCOV now has a module to record out-of-hospital deaths.

Severity data has some inherent limitations. We rely on a proxy indicator for severity and do not have clinical or laboratory parameters to ascertain clinical severity. In the early and late phases of the wave there is likely to be lower severity due to there being sufficient hospital capacity. It may take a few weeks for hospitalisation outcomes to accumulate. Early reporting on case fatality ratio is also biased particularly in older adults who may have longer admissions and are more likely to die.

Acknowledgements

All public and private sector hospitals submitting data to DATCOV

Private hospital groups submitting data to DATCOV:

- Netcare
- Life Healthcare
- Mediclinic Southern Africa
- National Hospital Network (NHN)
- Clinix Health Group
- Lenmed
- Joint Medical Holdings (JMH)

Appendix

Table 14: Percentage incidence change in hospital admissions over 14 days, by district, South Africa, 15 October 2022-29 October 2022.

Province	District	Total admissions	Incidence (per 100k)	New admissions	New admissions incidence (per 100k)	% Average change (14 days)
Eastern Cape	Alfred Nzo	2768	335.71	0	0.00	-100.00
	Amathole	3319	424.12	0	0.00	100.00
	Buffalo City Metro	10696	1351.37	0	0.00	-100.00
	Chris Hani	5353	751.23	5	0.70	-28.57
	Joe Gqabi	1220	355.77	0	0.00	-100.00
	Nelson Mandela Bay Metro	17029	1411.56	13	1.08	85.71
	O R Tambo	5054	329.55	2	0.13	100.00
	Sarah Baartman	3425	709.75	0	0.00	-100.00
Free State	Fezile Dabi	3853	753.20	3	0.59	100.00
	Lejweleputswa	6771	1036.62	3	0.46	200.00
	Mangaung Metro	15489	1767.38	4	0.46	0.00
	Thabo Mofutsanyana	5869	767.91	1	0.13	-66.67
	Xhariep	741	583.27	4	3.15	100.00
Gauteng	City of Johannesburg Metro	57080	949.24	18	0.30	-62.50
	City of Tshwane Metro	44959	1176.83	30	0.79	-23.08
	Ekurhuleni Metro	34672	856.86	17	0.42	-26.09
	Sedibeng	10295	1056.97	3	0.31	-57.14
	West Rand	13965	1460.14	7	0.73	75.00
KwaZulu-Natal	Amajuba	4746	837.03	1	0.18	100.00
	eThekweni Metro	41319	1030.50	27	0.67	-15.63
	Harry Gwala	2829	558.95	4	0.79	100.00
	iLembe	3078	442.42	0	0.00	-100.00
	King Cetshwayo	9832	1030.47	4	0.42	-42.86
	Ugu	5968	741.87	2	0.25	-50.00
	uMgungundlovu	12009	1053.50	1	0.09	-75.00
	uMkhanyakude	1524	221.52	1	0.15	100.00
	Umzinyathi	2425	429.90	0	0.00	-100.00
	UThukela	3371	481.31	1	0.14	-66.67
Limpopo	Zululand	2550	288.40	0	0.00	100.00
	Capricorn	8765	660.55	2	0.15	-50.00
	Mopani	3831	318.54	1	0.08	100.00
	Sekhukhune	2149	176.63	1	0.08	0.00
	Vhembe	3093	216.24	2	0.14	100.00



	Waterberg	3377	450.18	1	0.13	100.00
Mpumalanga	Ehlanzeni	8180	447.39	0	0.00	-100.00
	Gert Sibande	7857	619.70	2	0.16	-33.33
	Nkangala	7038	427.24	3	0.18	-40.00
North West	Bojanala Platinum	11439	587.17	0	0.00	-100.00
	Dr Kenneth Kaunda	17631	2194.82	6	0.75	-45.45
	Dr Ruth Segomotsi Mompoti	2392	512.73	0	0.00	100.00
	Ngaka Modiri Molema	2819	311.54	0	0.00	100.00
Northern Cape	Frances Baard	5601	1346.49	0	0.00	-100.00
	John Taolo Gaetsewe	1701	615.51	1	0.36	100.00
	Namakwa	1350	1153.93	0	0.00	100.00
	Pixley Ka Seme	935	444.36	1	0.48	100.00
	ZF Mgcawu	2329	822.06	0	0.00	100.00
Western Cape	Cape Winelands	13647	1427.79	0	0.00	-100.00
	Central Karoo	1405	1853.76	0	0.00	100.00
	City of Cape Town Metro	85134	1819.53	49	1.05	-37.97
	Garden Route	13394	2131.97	2	0.32	100.00
	Overberg	3343	1094.17	6	1.96	50.00
	West Coast	4593	978.28	0	0.00	100.00

Table 15: Number of reported COVID-19 admissions and in-hospital deaths by age and gender, South Africa, 5 March 2020-29 October 2022.

Age Group (Years)	ADMISSIONS				DEATHS			
	Female	Male	Unknown	Total	Female	Male	Unknown	Total
0-4	7611	9682	54	17347	184	213	4	401
5-9	2107	2794	8	4909	31	38	0	69
10-14	2760	2858	12	5630	70	71	1	142
15-19	7386	4167	6	11559	164	140	0	304
20-24	11406	5773	10	17189	368	280	1	649
25-29	18000	8156	10	26166	782	536	0	1318
30-34	23071	12832	15	35918	1319	1134	2	2455
35-39	23568	16763	22	40353	1877	1781	4	3662
40-44	20770	18456	17	39243	2293	2376	0	4669
45-49	22868	22369	12	45249	3239	3459	1	6699
50-54	26356	24714	10	51080	4408	4586	2	8996
55-59	29236	26722	16	55974	6213	6258	5	12476
60-64	26151	23897	18	50066	6696	6912	6	13614
65-69	22607	20189	20	42816	6954	6519	7	13480
70-74	19451	17191	19	36661	6190	6056	4	12250
75-79	14849	12304	9	27162	4944	4640	3	9587
80-84	11417	8166	8	19591	4062	3192	3	7257
85-89	6312	3956	2	10270	2301	1684	0	3985
90-94	2781	1414	1	4196	1127	667	0	1794
>=95	844	396	3	1243	373	168	0	541
Unknown	858	672	46	1576	48	43	0	91
Total	300409	243471	318	544198	53643	50753	43	104439