

COVID-19 Hospital Surveillance

Update: Week 44, 2022

Overview of report

This report summarises data of COVID-19 cases admitted to hospital surveillance sites in all provinces. The report is based on data collected from 5 March 2020 to 5 November 2022.

Highlights

- There was a 40% decrease in the number of new admissions in week 44 2022 (166) compared to the number of admissions in week 43 2022 (277). Delays in reporting of admissions and deaths may affect the numbers reported in the most recent week.
- Gauteng had the highest number of admissions in the past week (64/166, 38.5%), followed by KwaZulu-Natal (51/166, 30.7%) and Western Cape (29/166, 17.4%). Limpopo, Mpumalanga, and Northern Cape had the lowest number of admissions (2/166, 0.9%).
- The highest weekly incidence risk of COVID-19 admissions reported in week 44 of 2022 was in the ≥65-year age group (1.3 admissions per 100 000 persons), and the lowest weekly incidence risk was in 20-34-year age group (0.1 admissions per 100 000 persons). An increased incidence risk of COVID-19 admissions was observed in children <5 years in weeks 40 and 41 nationally and in Gauteng, but the incidence risk has since decreased.

Methods

Data on hospitalisation was accessed from DATCOV, a hospital surveillance system for COVID-19 admissions, initiated on the 1 April 2020. A COVID-19 case was defined as a person with a positive reverse transcriptase polymerase chain reaction (RT-PCR) assay for SARS-CoV-2 or a person who had a positive SARS-CoV-2 antigen test who was admitted to hospital.

Data on SARS-CoV-2 cases diagnosed in public and private laboratories submitted to the NICD were reported from the line list on the NMCSS.

Case fatality ratio (CFR) was calculated for all closed cases, i.e., COVID-19 deaths divided by COVID-19 deaths plus COVID-19 discharges, excluding individuals who are still admitted in hospital. For the calculation of cumulative incidence risks, StatsSA mid-year population estimates for 2021 were utilised. For comparisons of change in admission, we used 14-day daily average admissions in the current 14-day period compared to the previous 14-day period.

Severity was defined as patients receiving oxygen or invasive ventilation, treated in high care or intensive care wards, developing acute respiratory distress syndrome, or died. While oxygen, ventilation, and ward of stay variables are updated daily for all admissions in the private sector, there may be delays with the data being updated in the public sector. Also, as patients remain in hospital their condition may change, and percentage of severity may change over time.

Data are submitted by public and private hospitals that have agreed to report COVID-19 admissions through DATCOV surveillance in all nine provinces of South Africa. On 15 July 2020, the National Health Council decided that all hospitals should report to DATCOV. As of 5 November 2022, a total of 667 facilities submitted data on hospitalised COVID-19 cases, 406 from public sector and 262 from private sector (Table 1). This reflects 100% coverage of all public and private hospitals that have had COVID-19 admissions. As new hospitals join the surveillance system, they have retrospectively captured all admissions recorded although there may be some backlogs in retrospective data capture.

Table 1: Number of hospitals reporting data on COVID-19 admissions by province and sector, South Africa, 5 March 2020-5 November 2022.

Facilities reporting	Public	Private
Eastern Cape	86	18
Free State	34	20
Gauteng	39	99
KwaZulu-Natal	71	47
Limpopo	41	7
Mpumalanga	31	9
North West	17	13
Northern Cape	29	6
Western Cape	59	43
South Africa	406	262

Results

Epidemiological and demographic trends in admissions

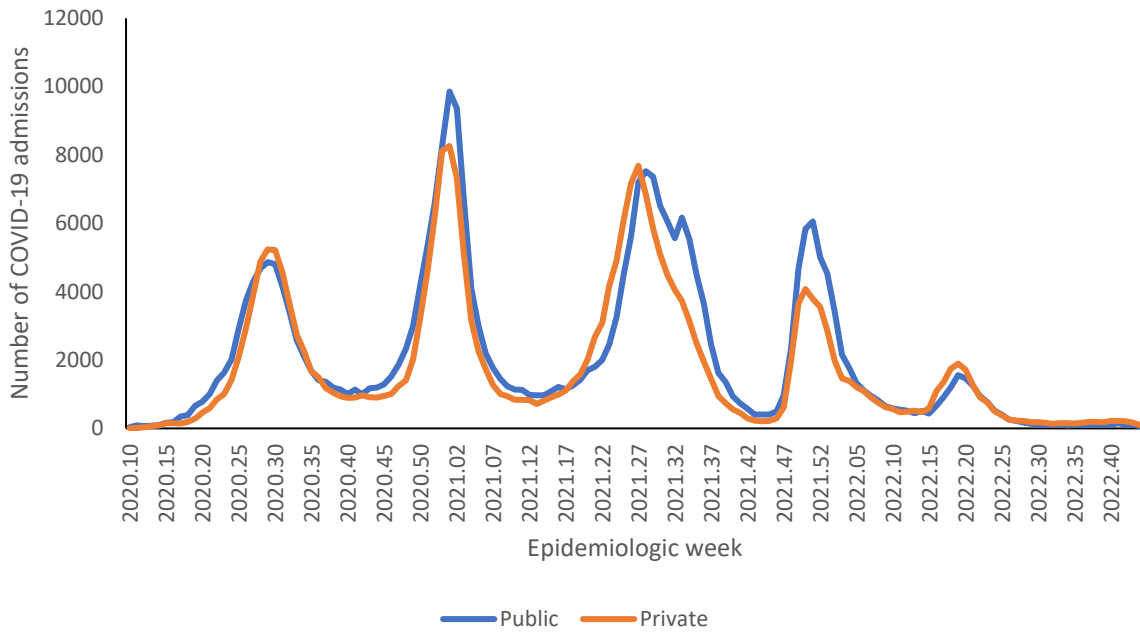


Figure 1: Number of reported COVID-19 admissions by health sector and epidemiologic week of diagnosis, South Africa, 5 March 2020-5 November 2022, N=544,429

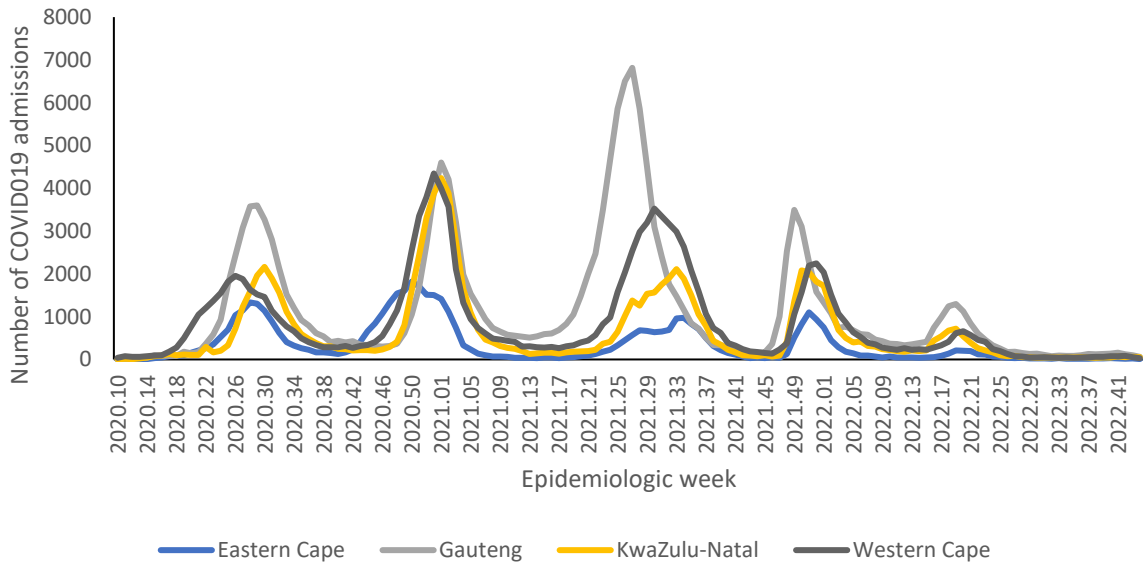


Figure 2a: Number of reported COVID-19 admissions, by provinces with highest admissions and epidemiologic week of diagnosis, South Africa, 5 March 2020-5 November 2022, N=544,429

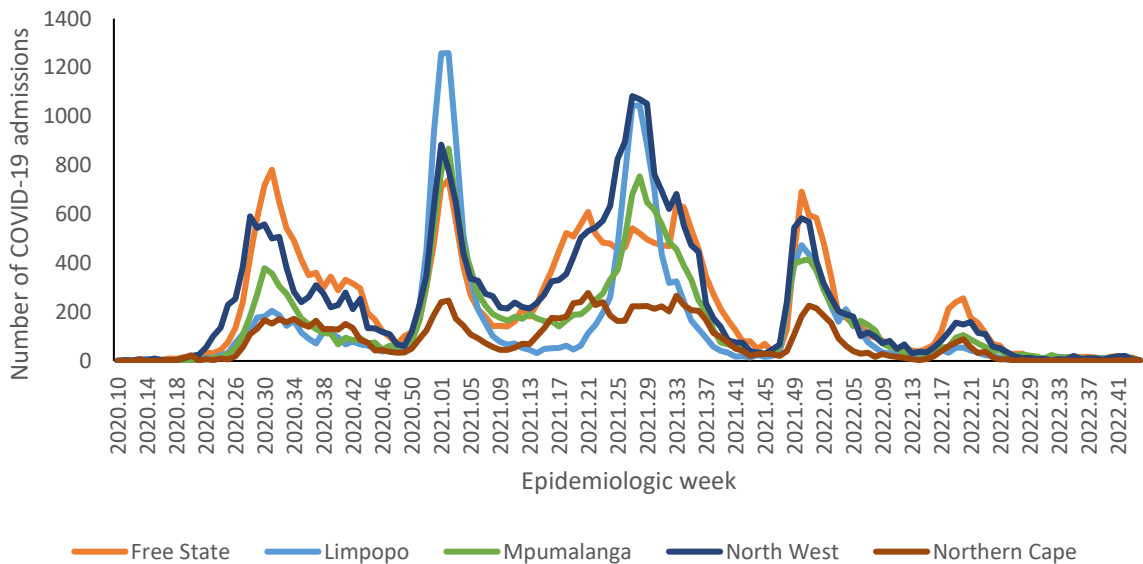


Figure 2b: Number of reported COVID-19 admissions, by provinces with lowest admissions and epidemiologic week of diagnosis, South Africa, 5 March 2020-5 November 2022, N=544,429

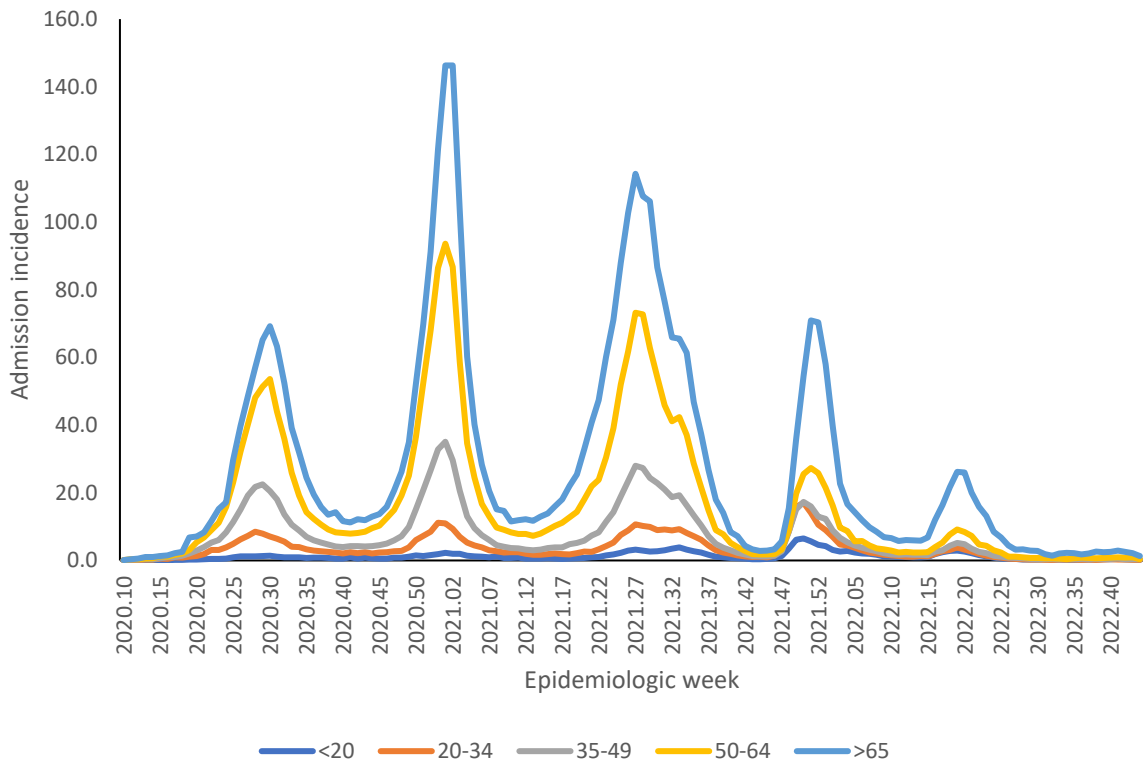


Figure 3: Incidence risk of COVID-19 admissions per 100,000 persons, by age group and epidemiologic week of diagnosis, South Africa, 5 March 2020-5 November 2022, N=544,429

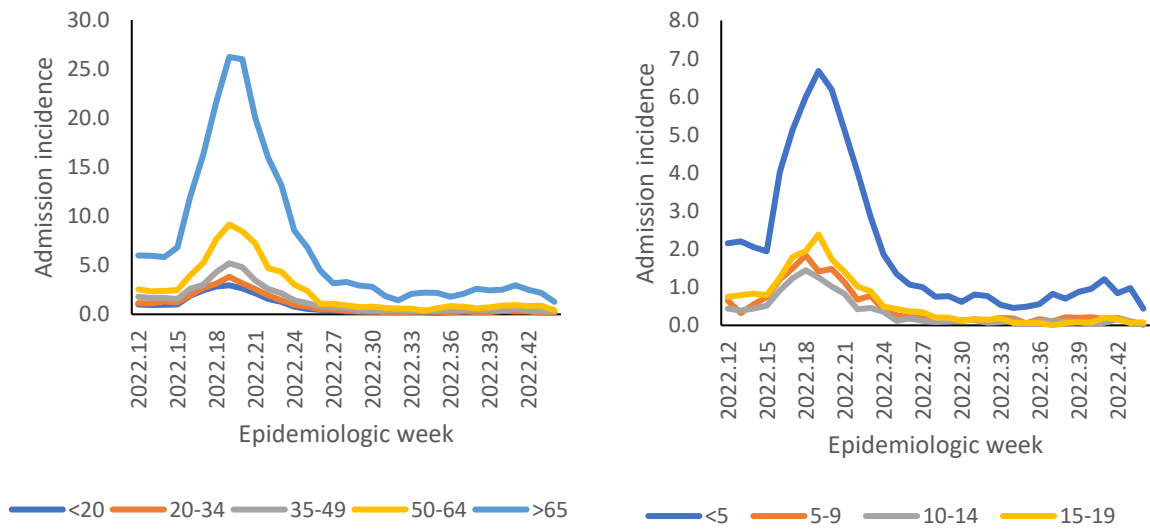


Figure 4: Incidence risk of COVID-19 admissions per 100,000 persons, by age group and epidemiologic week of diagnosis, South Africa, 19 March 2022-5 November 2022

Epidemiological and demographic trends in in-hospital mortality

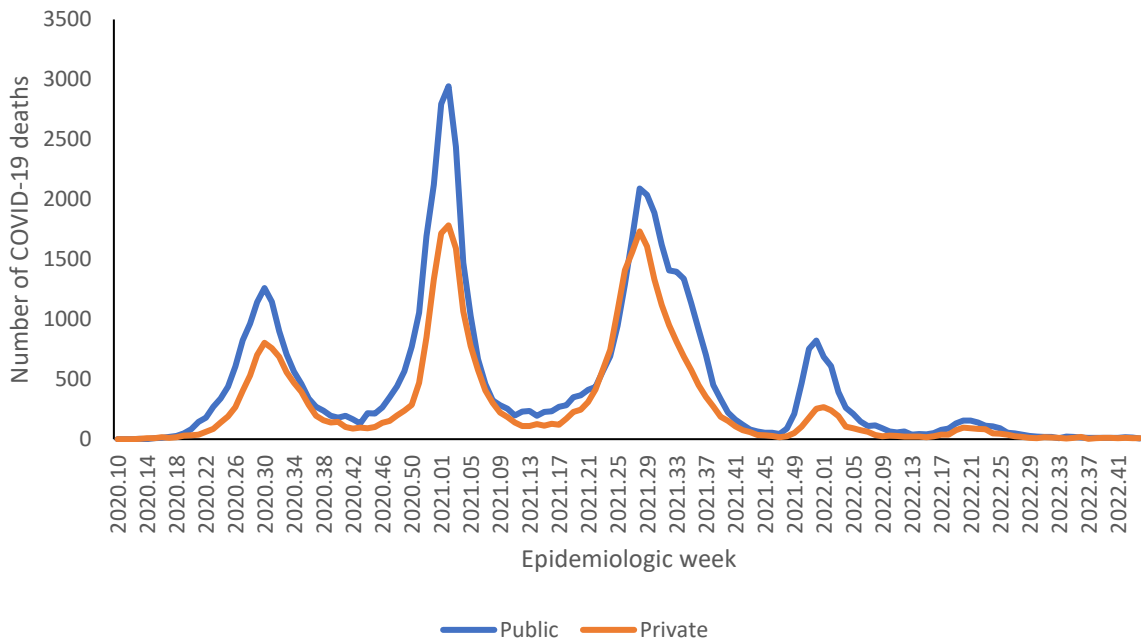


Figure 5: Number of reported COVID-19 in-hospital deaths, by health sector and epidemiologic week, South Africa, 5 March 2020-5 November 2022, N=104,456

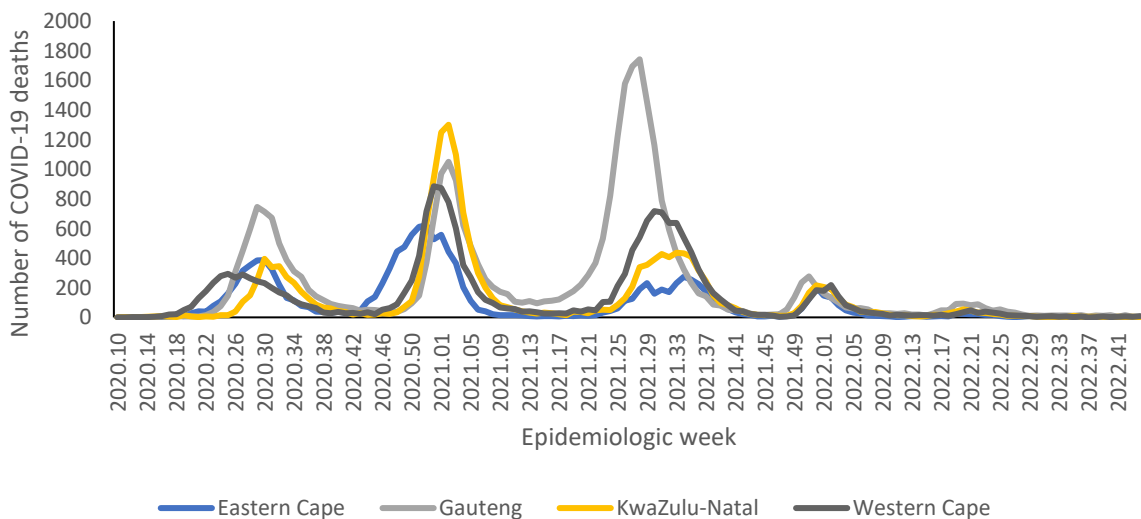


Figure 6a: Number of reported COVID-19 in-hospital deaths, by province with highest deaths and epidemiologic week of death, South Africa, 5 March 2020-5 November 2022, N=104,456

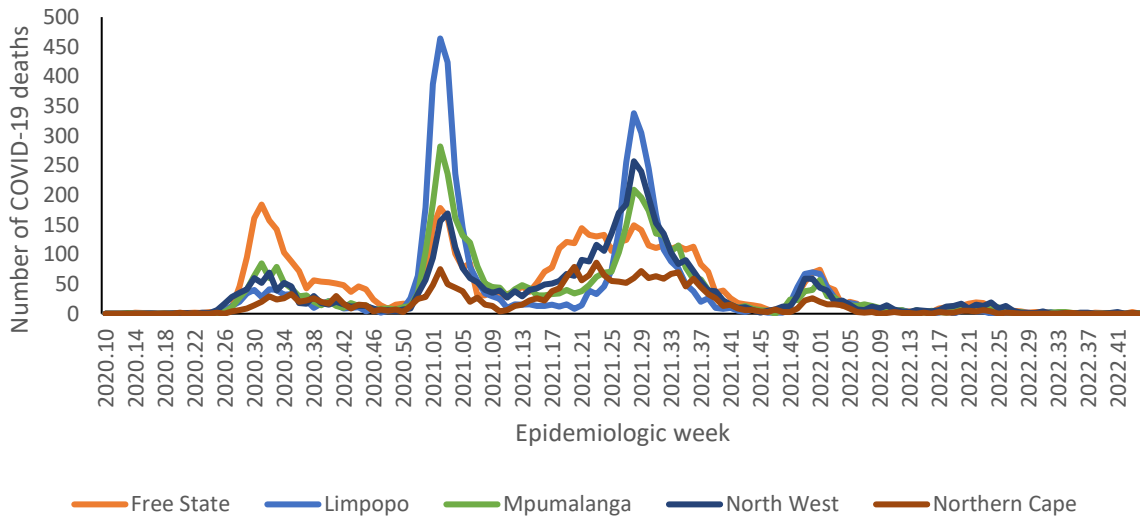


Figure 6b: Number of reported COVID-19 in-hospital deaths, by province with lowest deaths and epidemiologic week of death, South Africa, 5 March 2020-5 November 2022, N=104,456

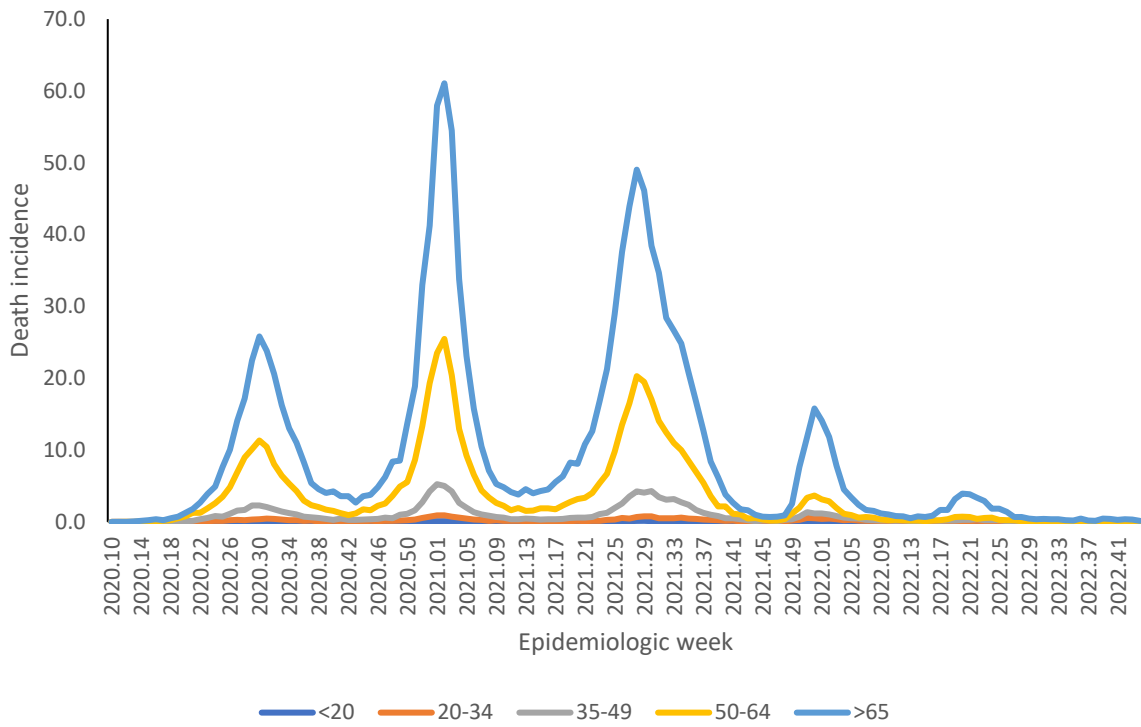


Figure 7: Incidence risk of COVID-19 in-hospital deaths per 100,000 persons, by age group and epidemiologic week of death, South Africa, 5 March 2020-5 November 2022, N=104,456

Provincial trends

Table 2: Number and cumulative incidence risk of COVID-19 hospitalisations and in-hospital deaths per 100,000 persons by province, South Africa, 5 March 2020-5 November 2022.

Province	Provincial Population mid 2020*	Cumulative admissions	Cumulative incidence risk of admissions / 100,000	Cumulative deaths	Cumulative incidence risk of deaths / 100,000
Eastern Cape	6676590	48882	732.1	13311	199.4
Free State	2932441	32723	1115.9	6161	210.1
Gauteng	15810388	161 051	1018.6	30699	194.2
KwaZulu-Natal	11513575	89720	779.3	17604	152.9
Limpopo	5926724	21218	358.0	5332	90.0
Mpumalanga	4743584	23078	486.5	4931	104.0
North West	4122854	34 277	831.4	5018	121.7
Northern Cape	1303047	11 919	914.7	2459	188.7
Western Cape	7113776	121 561	1708.8	18941	266.3
South Africa	60142978	544 429	905.2	104 456	173.7

*StatsSA mid-year population estimates 2020

Table 3: Previous 14 days and current 14 days daily average COVID-19 admissions and deaths and percentage changes, South Africa, 8 October-5 November 2022.

Province	Hospital admissions		Percentage change in admissions	Hospital deaths		Percentage change in deaths
	Previous 14 days average admissions	Current 14 days average admissions		Previous 14 days average deaths	Current 14 days average deaths	
Eastern Cape	2.93	2.36	-19.51	0.29	0.36	25.00
Free State	2.07	1.00	-51.72	0.00	0.21	0.00
Gauteng	19.64	11.79	-40.00	1.43	0.43	-70.00
KwaZulu-Natal	8.57	7.79	-9.17	0.57	0.43	-25.00
Limpopo	1.00	0.71	-28.57	0.00	0.00	0.00
Mpumalanga	1.14	0.57	-50.00	0.07	0.07	0.00
North West	2.79	0.86	-69.23	0.21	0.07	-66.67
Northern Cape	0.29	0.36	25.00	0.00	0.07	0.00
Western Cape	11.14	6.14	-44.87	0.79	0.93	18.18

* Reporting of new admissions in the most recent week may be delayed

Table 4: Previous 7 days and current 7 days daily average COVID-19 admissions and deaths and percentage changes, South Africa, 22 October-5 November 2022.

Province	Hospital admissions		Percentage change in admissions	Hospital deaths		Percentage change in deaths
	Previous 7 days average admissions	Current 7 days average admissions		Previous 7 days average deaths	Current 7 days average deaths	
Eastern Cape	3.00	1.71	-42.86	0.43	0.29	-33.33
Free State	2.00	0.00	-100.00	0.43	0.00	-100.00
Gauteng	14.43	9.14	-36.63	0.57	0.29	-50.00
KwaZulu-Natal	8.29	7.29	-12.07	0.71	0.14	-80.00
Limpopo	1.14	0.29	-75.00	0.00	0.00	0.00
Mpumalanga	0.86	0.29	-66.67	0.00	0.14	0.00
North West	1.14	0.57	-50.00	0.14	0.00	-100.00
Northern Cape	0.43	0.29	-33.33	0.14	0.00	-100.00
Western Cape	8.14	4.14	-49.12	0.71	1.14	60.00

* Reporting of new admissions in the most recent week may be delayed

Eastern Cape

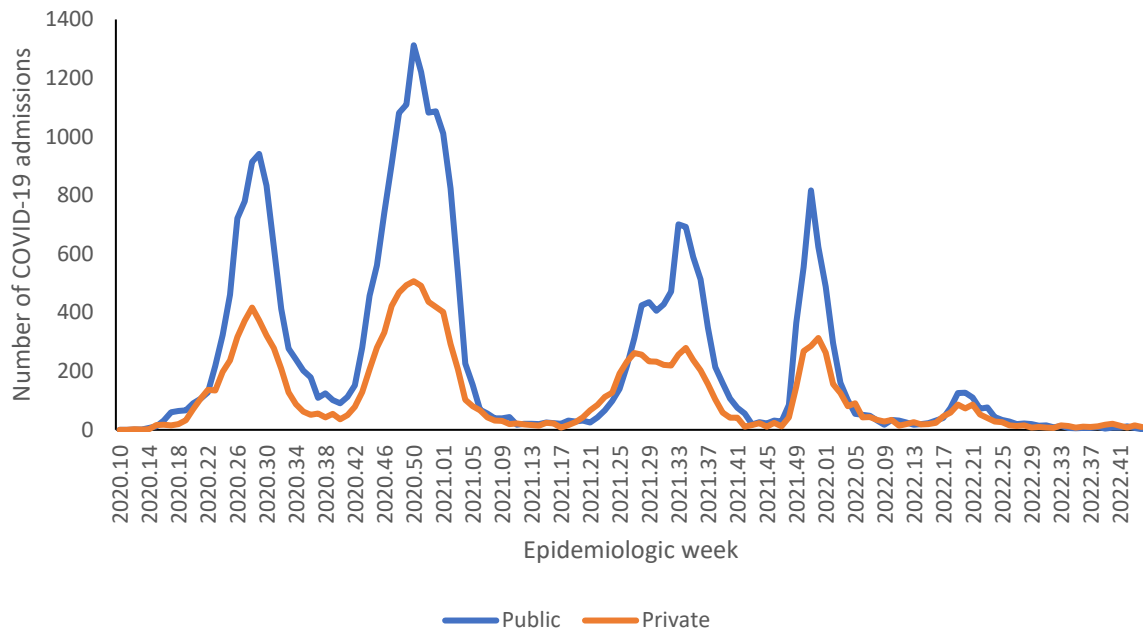


Figure 8: Number of reported COVID-19 admissions by health sector and epidemiologic week of diagnosis, Eastern Cape, 5 March 2020-5 November 2022, N=48,882

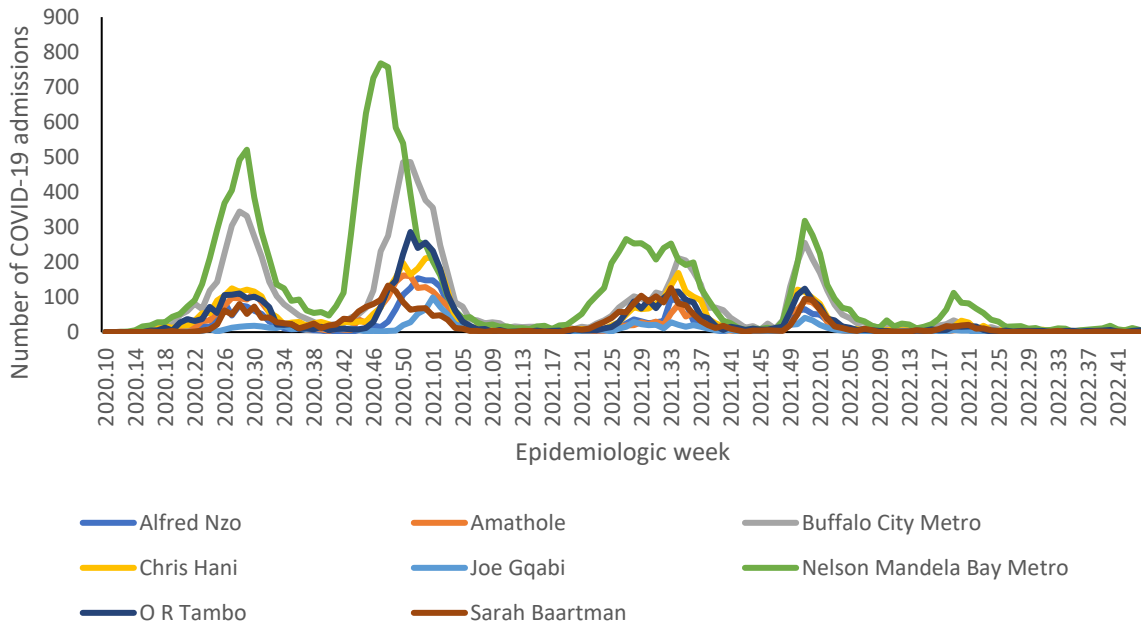


Figure 9: Number of reported COVID-19 admissions, by district and epidemiologic week, Eastern Cape, 5 March 2020-5 November 2022, N=48,882

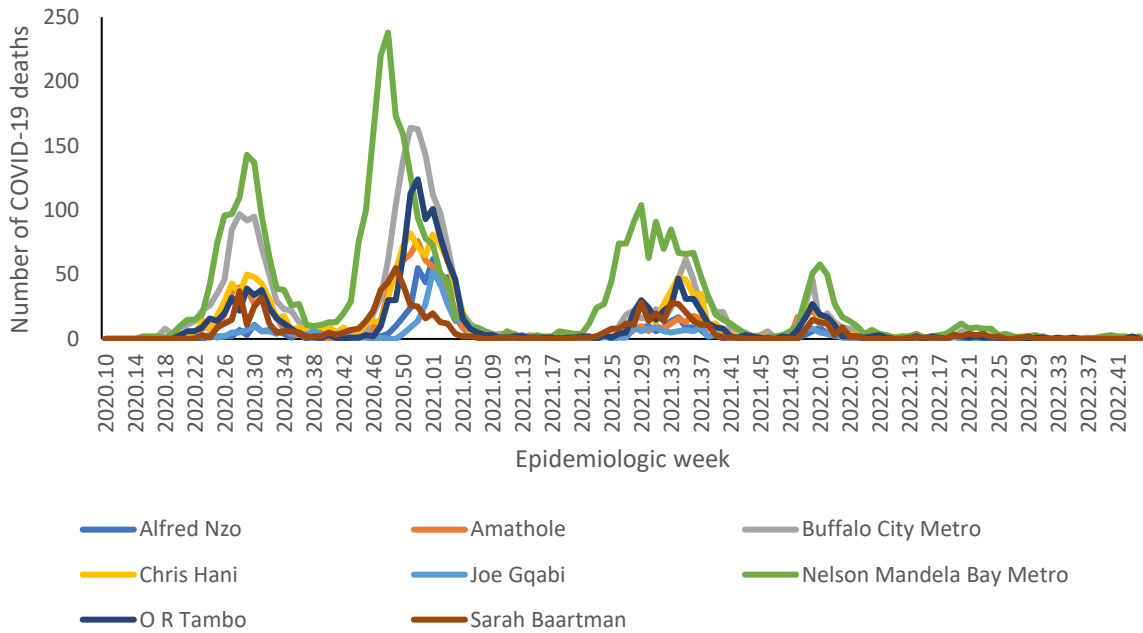


Figure 10: Number of reported COVID-19 in-hospital deaths, by district and epidemiologic week, Eastern Cape, 5 March 2020-5 November 2022, N=13,311

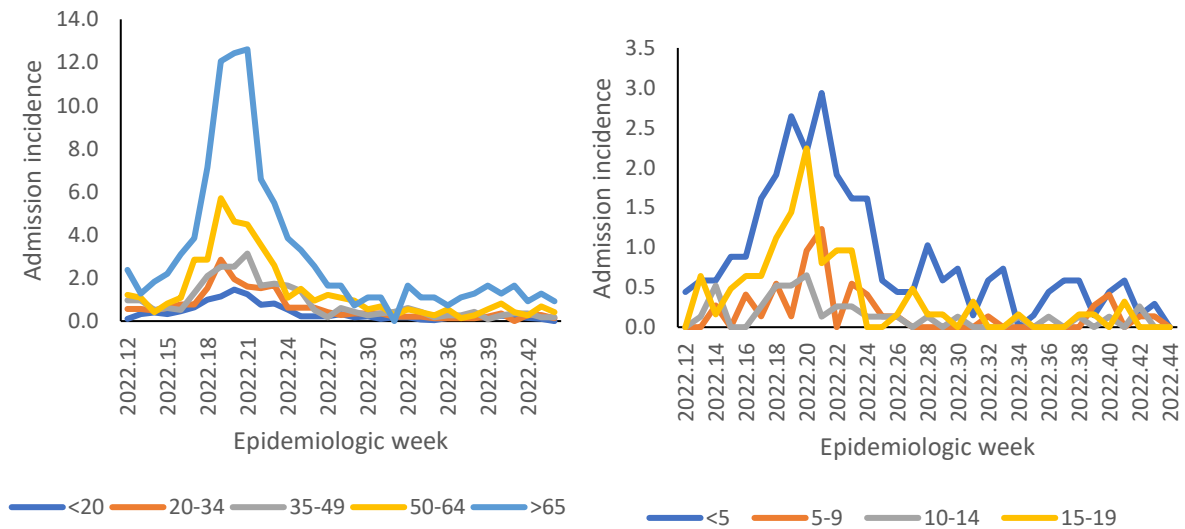


Figure 11: Incidence risk of COVID-19 admissions per 100,000 persons by age group and epidemiologic week of diagnosis, Eastern Cape, 19 March 2022-5 November 2022

Table 5: Previous 14 days and current 14 days average COVID-19 admissions and deaths and percentage changes, Eastern Cape, 8 October-5 November 2022.

District	Previous 14 days admissions average	Current 14 days admissions average	Percentage change in admissions	Previous 14 days deaths average	Current 14 days deaths average	Percentage change in deaths
Alfred Nzo	0.36	0.07	-80.00	0.00	0.00	0.00
Amathole	0.07	0.00	-100.00	0.00	0.00	0.00
Buffalo City Metro	0.36	0.00	-100.00	0.00	0.00	0.00
Chris Hani	0.79	0.43	-45.45	0.00	0.00	0.00
Joe Gqabi	0.07	0.00	-100.00	0.00	0.00	0.00
Nelson Mandela Bay	0.93	1.29	38.46	0.29	0.21	-25.00
O R Tambo	0.14	0.57	300.00	0.00	0.14	0.00
Sarah Baartman	0.21	0.00	-100.00	0.00	0.00	0.00



Free State

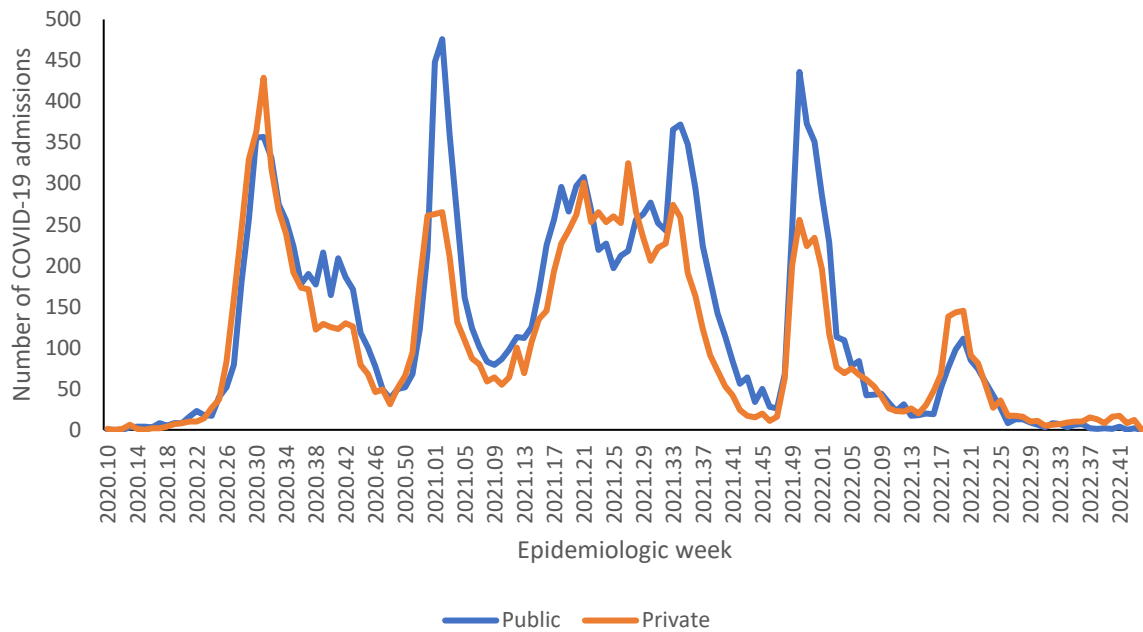


Figure 12: Number of reported COVID-19 admissions by health sector and epidemiologic week of diagnosis, Free State, 5 March 2020-5 November 2022, N=32,723

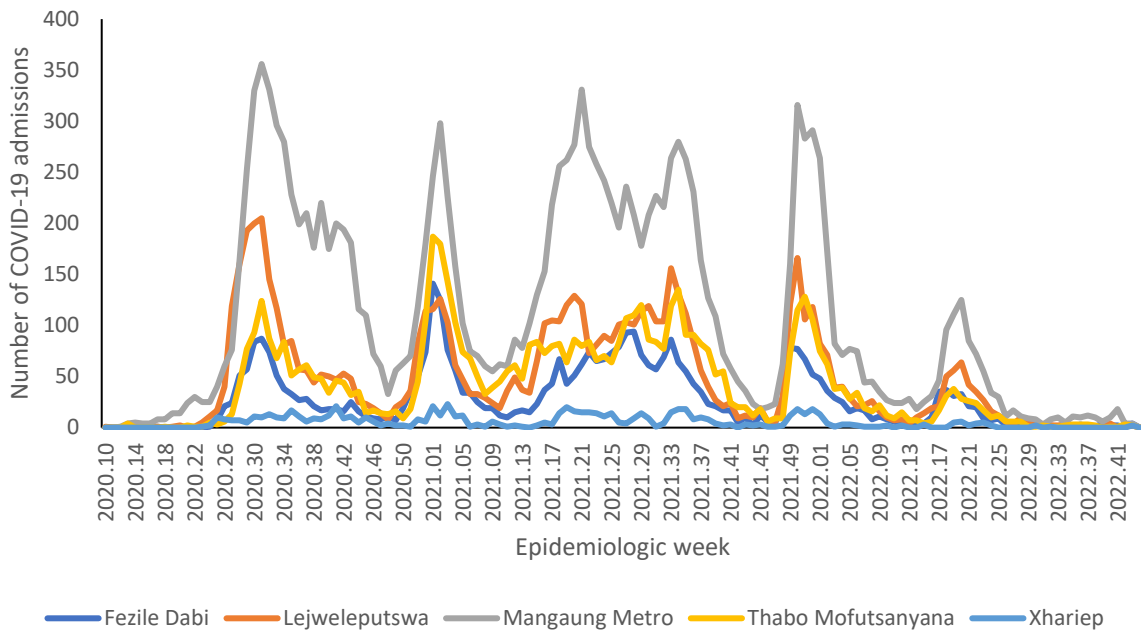


Figure 13: Number of reported COVID-19 admissions, by district and epidemiologic week, Free State, 5 March 2020-5 November 2022, N=32,723

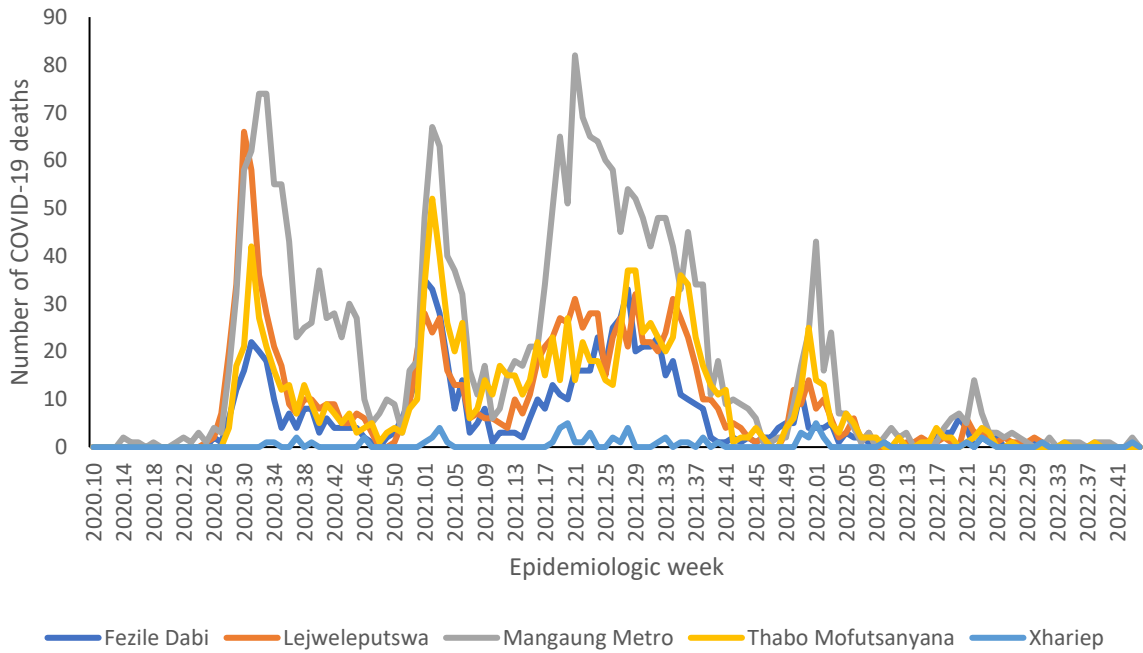


Figure 14: Number of reported COVID-19 in-hospital deaths, by district and epidemiologic week, Free State, 5 March 2020-5 November 2022, N=6,161

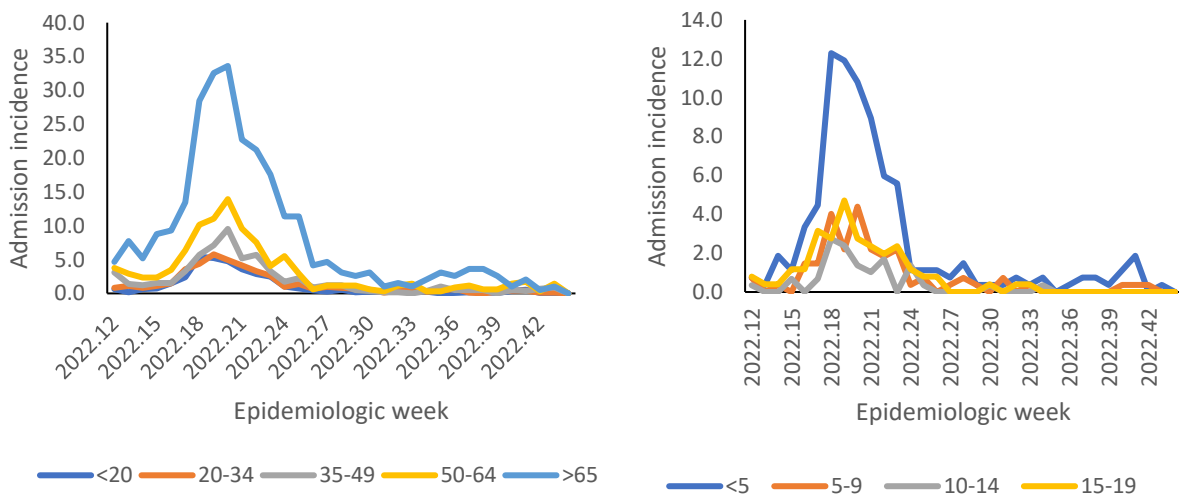


Figure 15: Incidence risk of COVID-19 admissions per 100,000 persons by age group and epidemiologic week of diagnosis, Free State, 19 March 2022- 5 November 2022



Table 6: Previous 14 days and current 14 days average COVID-19 admissions and deaths and percentage changes, Free State, 8 October-5 November 2022.

District	Previous 14 days admissions average	Current 14 days admissions average	Percentage change in admissions	Previous 14 days deaths average	Current 14 days deaths average	Percentage change in deaths
Fezile Dabi	0.14	0.29	100.00	0.00	0.00	0.00
Lejweleputswa	0.07	0.14	100.00	0.00	0.00	0.00
Mangaung Metro	1.57	0.29	-81.82	0.00	0.14	0.00
Thabo Mofutsanyana	0.29	0.14	-50.00	0.00	0.00	0.00
Xhariep	0.00	0.14	0.00	0.00	0.07	0.00



Gauteng

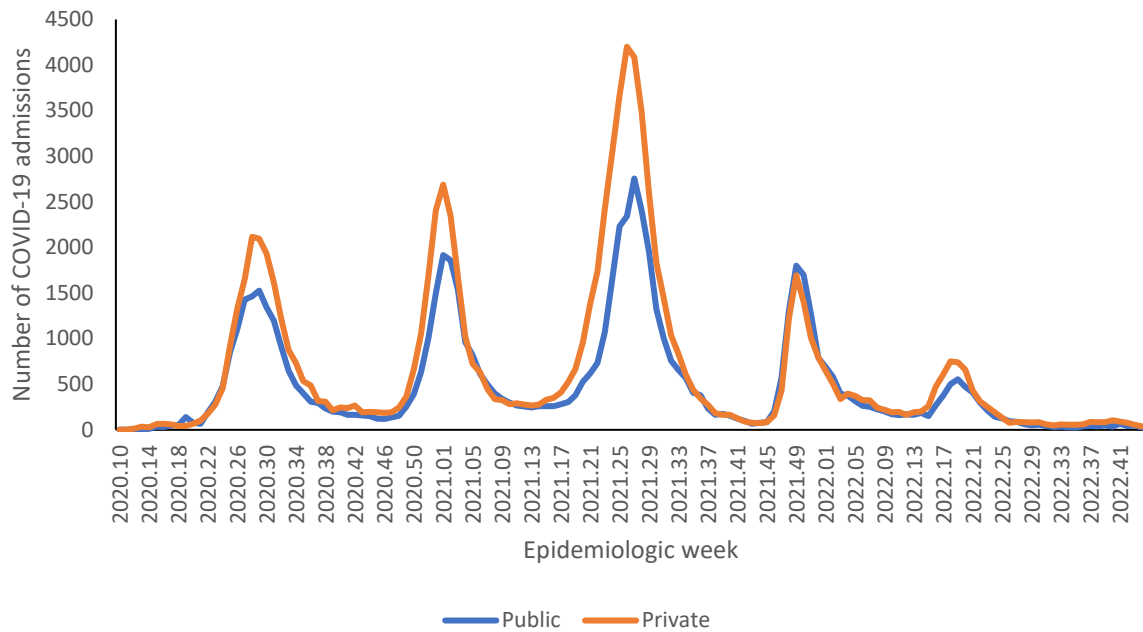


Figure 16: Number of reported COVID-19 admissions by health sector and epidemiologic week of diagnosis, Gauteng, 5 March 2020-5 November 2022, N=161,051

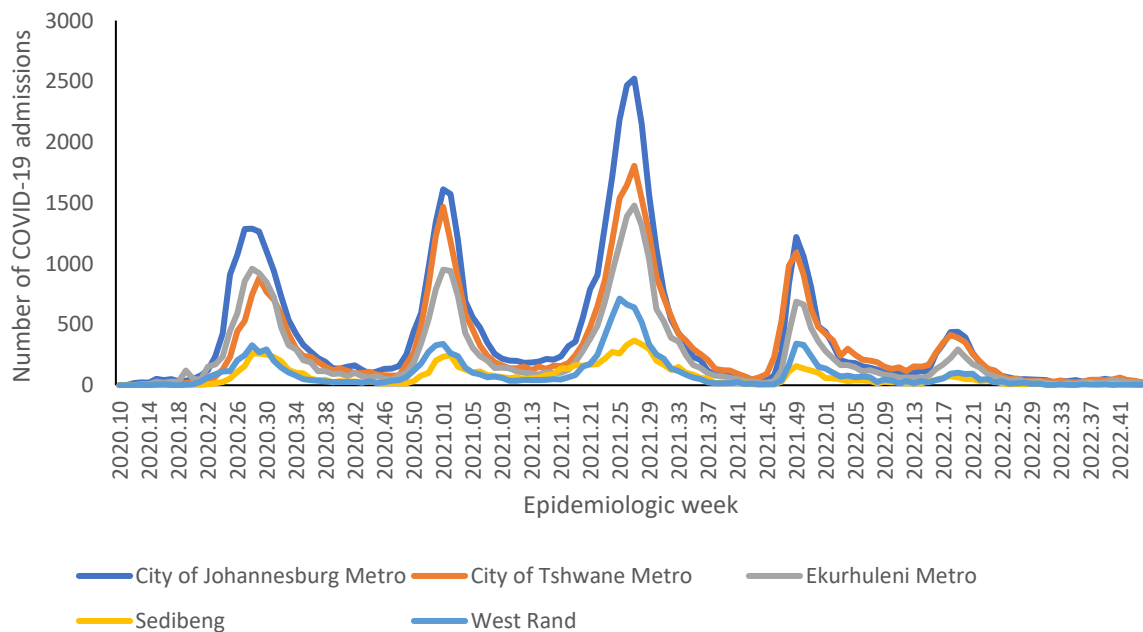


Figure 17: Number of reported COVID-19 admissions, by district and epidemiologic week, Gauteng, 5 March 2020-5 November 2022, N=161,051

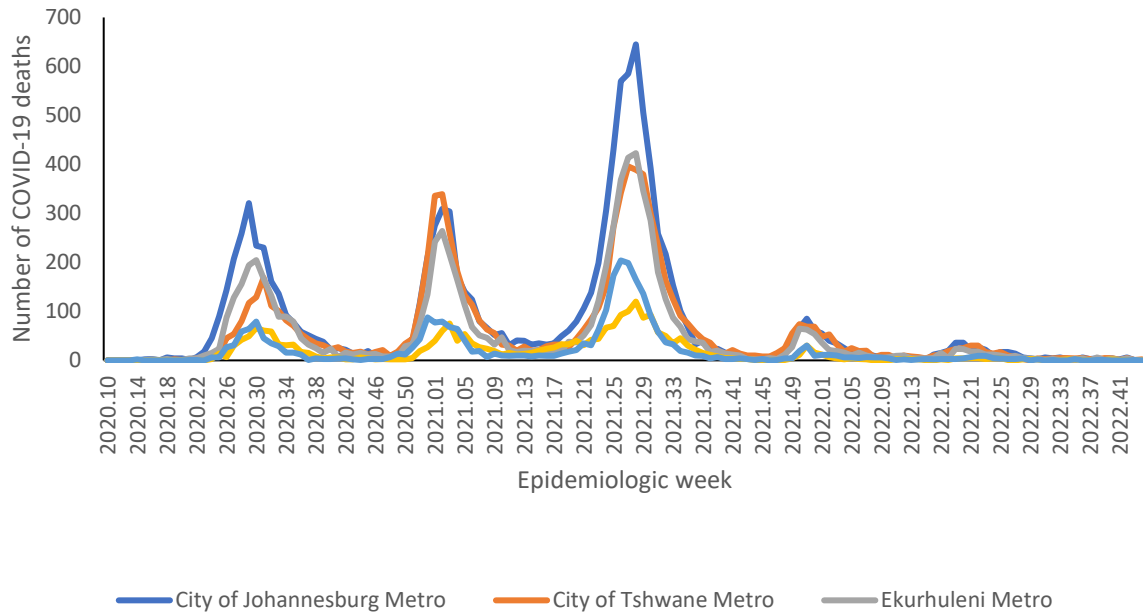


Figure 18: Number of reported COVID-19 in-hospital deaths, by district and epidemiologic week, Gauteng, 5 March 2020-5 November 2022, N=30,699

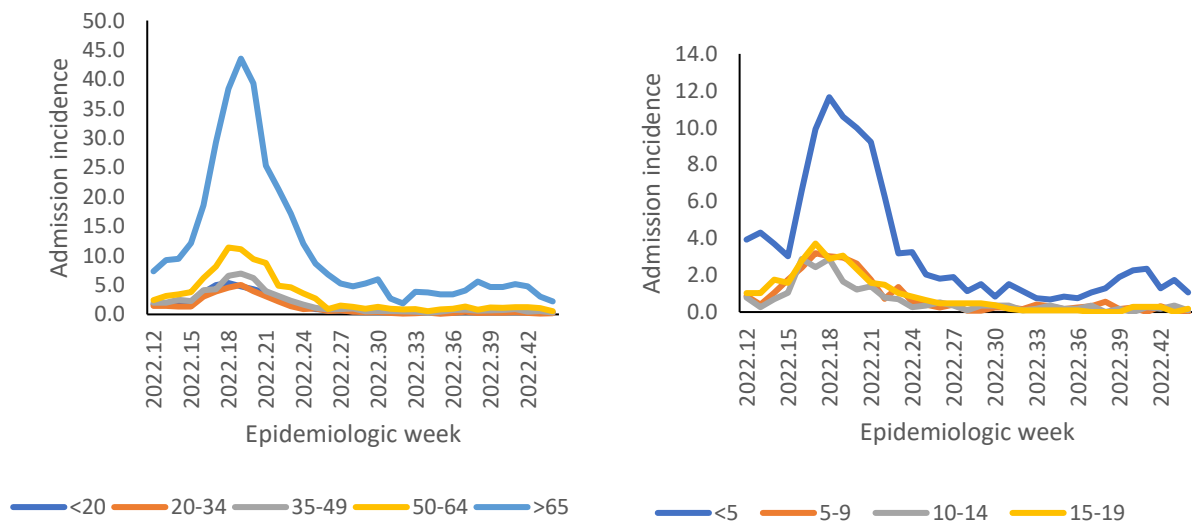


Figure 19: Incidence risk of COVID-19 admissions per 100,000 persons, per age group and epidemiologic week of diagnosis, Gauteng, 19 March 2022- 5 November 2022



Table 7: Previous 14 days and current 14 days average COVID-19 admissions and deaths and percentage changes, Gauteng, 8 October-5 November 2022.

District	Previous 14 days admissions average	Current 14 days admissions average	Percentage change in admissions	Previous 14 days deaths average	Current 14 days deaths average	Percentage change in deaths
City of Johannesburg Metro	6.14	3.57	-41.86	0.57	0.07	-87.50
City of Tshwane Metro	7.43	4.50	-39.42	0.43	0.21	-50.00
Ekurhuleni Metro	4.36	2.79	-36.07	0.36	0.07	-80.00
Sedibeng	1.14	0.29	-75.00	0.07	0.00	-100.00
West Rand	0.57	0.64	12.50	0.00	0.07	0.00



KwaZulu-Natal

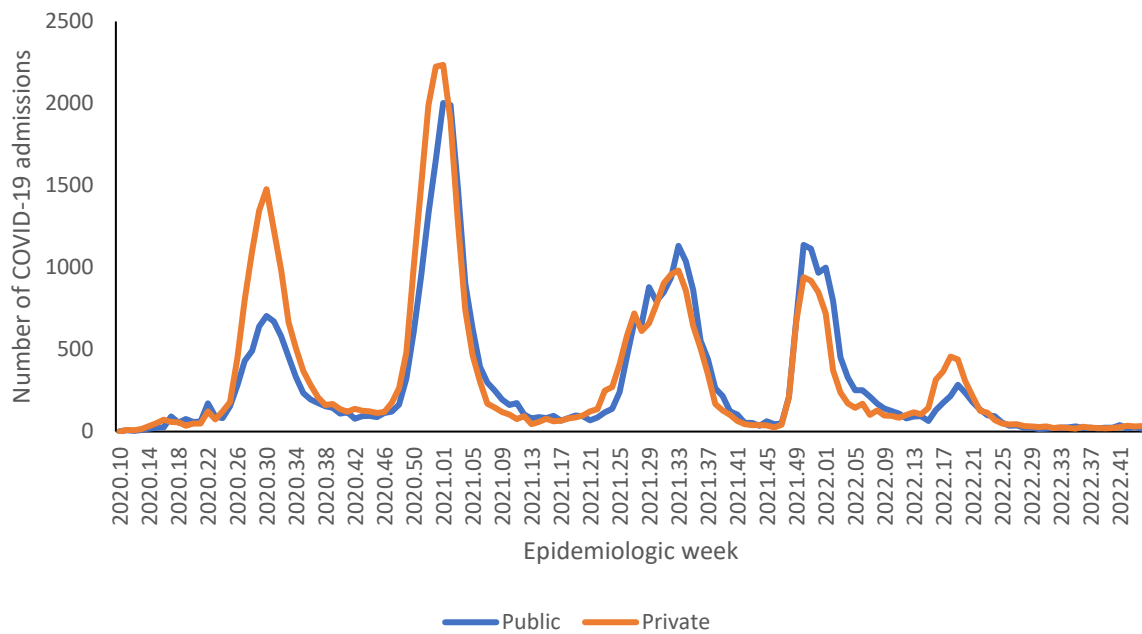


Figure 20: Number of reported COVID-19 admissions by health sector and epidemiologic week of diagnosis, KwaZulu-Natal, 5 March 2020-5 November 2022, N=89,720

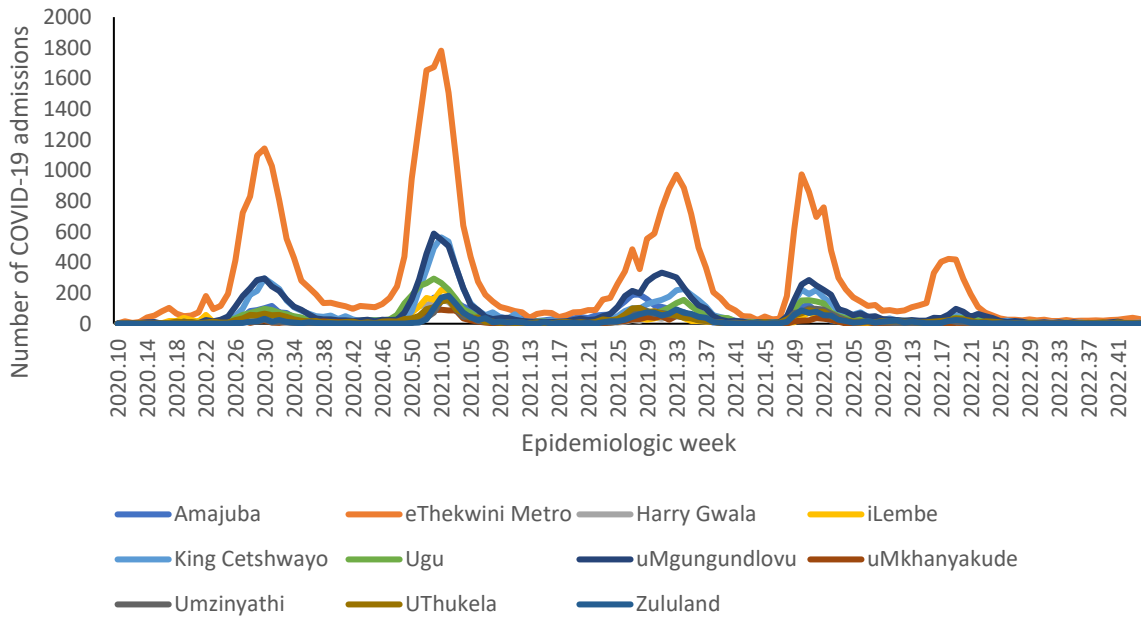


Figure 21: Number of reported COVID-19 admissions, by district and epidemiologic week, KwaZulu-Natal, 5 March 2020-5 November 2022, N=89,720

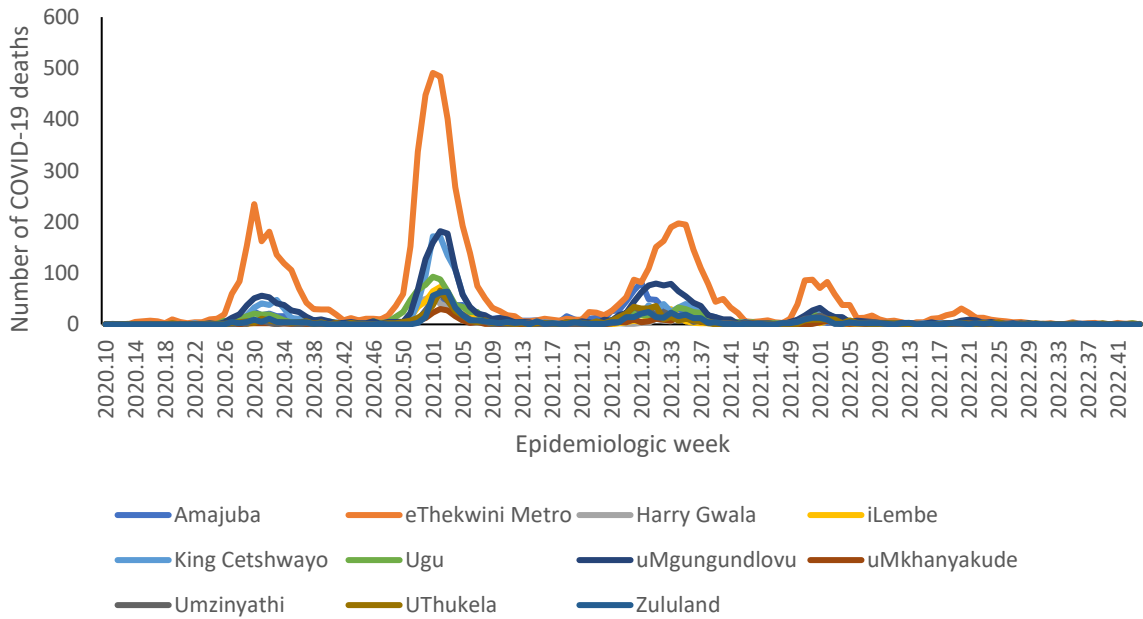


Figure 22: Number of reported COVID-19 in-hospital deaths, by district and epidemiologic week, KwaZulu-Natal, 5 March 2020-5 November 2022, N=17,604

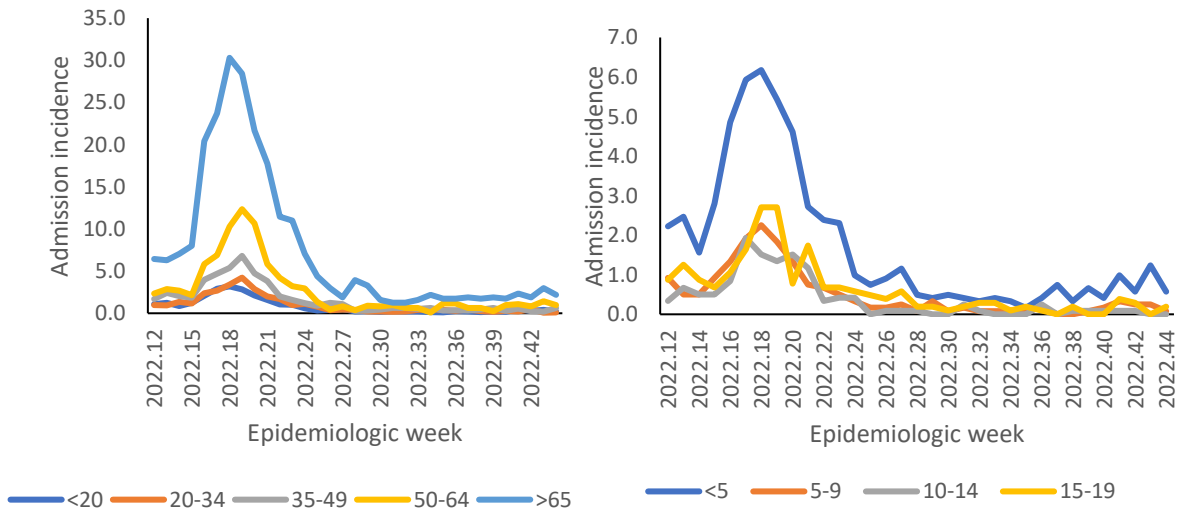


Figure 23: Incidence risk of COVID-19 admissions per 100,000 persons, by age group and epidemiologic week of diagnosis, KwaZulu-Natal, 19 March 2022- 5 November 2022



Table 8: Previous 14 days and current 14 days average COVID-19 admissions and deaths and percentage changes, KwaZulu-Natal, 8 October-5 November 2022.

District	Previous 14 days admissions average	Current 14 days admissions average	Percentage change in admissions	Previous 14 days deaths average	Current 14 days deaths average	Percentage change in deaths
Amajuba	0.21	0.07	-66.67	0.00	0.00	0.00
eThekweni Metro	4.21	4.86	15.25	0.29	0.14	-50.00
Harry Gwala	0.50	0.29	-42.86	0.14	0.00	-100.00
iLembe	0.07	0.21	200.00	0.00	0.00	0.00
King Cetshwayo	0.71	0.86	20.00	0.07	0.00	-100.00
Ugu	0.50	0.36	-28.57	0.00	0.14	0.00
uMgungundlovu	1.21	0.36	-70.59	0.00	0.00	0.00
uMkhanyakude	0.00	0.07	0.00	0.07	0.00	-100.00
Umzinyathi	0.14	0.14	0.00	0.00	0.07	0.00
UThukela	0.86	0.50	-41.67	0.00	0.07	0.00
Zululand	0.14	0.07	-50.00	0.00	0.00	0.00

Limpopo

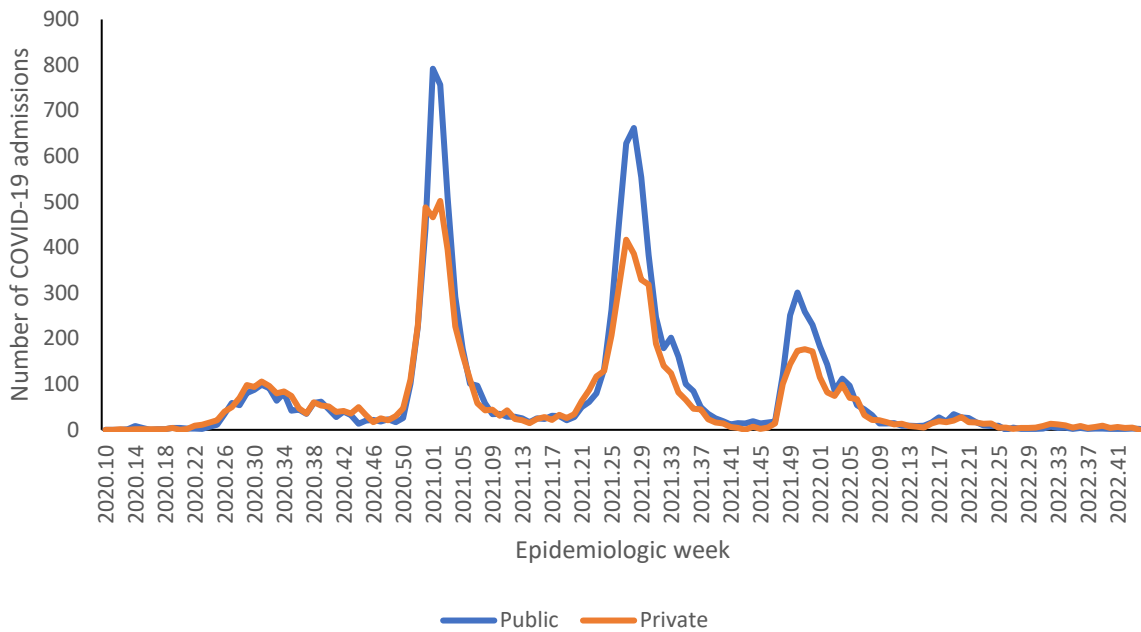


Figure 24: Number of reported COVID-19 admissions by health sector and epidemiologic week of diagnosis, Limpopo, 5 March 2020-5 November 2022, N=21,218



Figure 25: Number of reported COVID-19 admissions, by district and epidemiologic week, Limpopo, 5 March 2020-5 November 2022, N=21,218

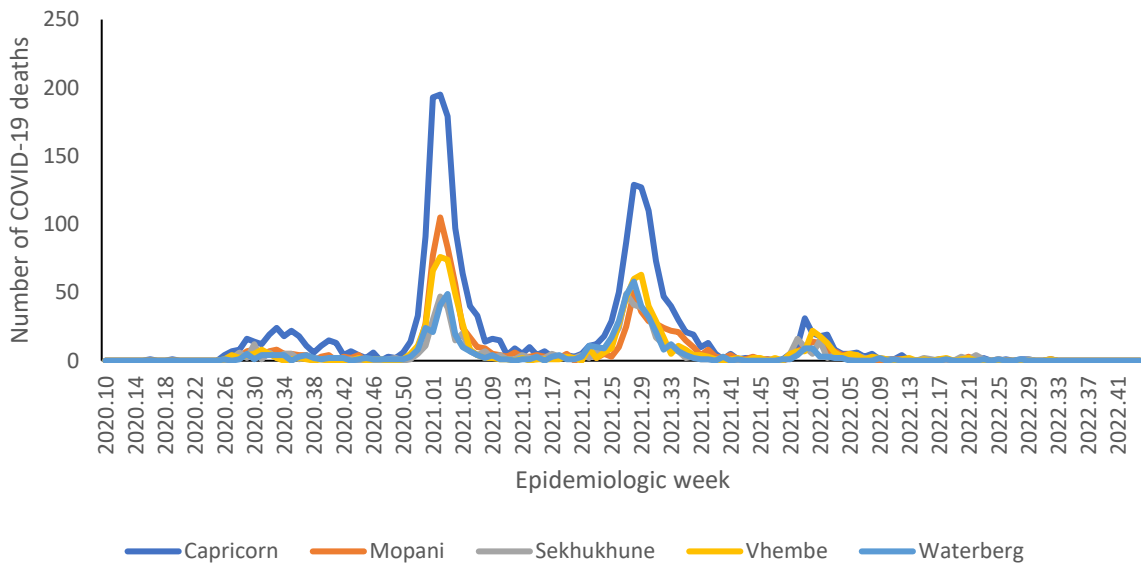


Figure 26: Number of reported COVID-19 in-hospital deaths, by district and epidemiologic week, Limpopo, 5 March 2020-5 November 2022, N=5,332

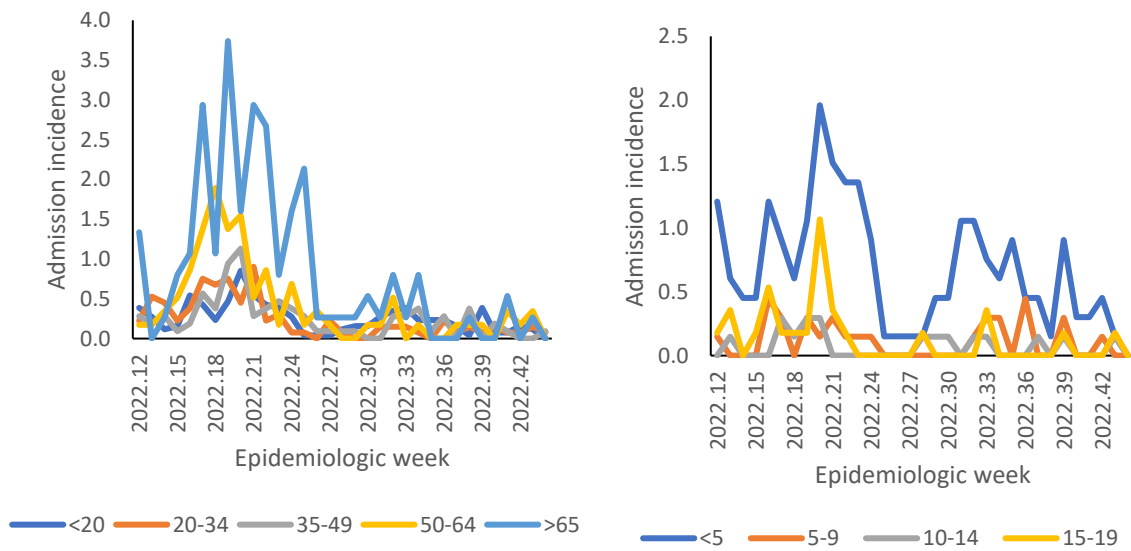


Figure 27: Incidence risk of COVID-19 admissions per 100,000 persons, by age group and epidemiologic week of diagnosis, Limpopo, 19 March 2022-5 November 2022

Table 9: Previous 14 days and current 14 days average COVID-19 admissions and deaths and percentage changes, Limpopo, 8 October-5 November 2022.

District	Previous 14 days admissions average	Current 14 days admissions average	Percentage change in admissions	Previous 14 days deaths average	Current 14 days deaths average	Percentage change in deaths
Capricorn	0.43	0.21	-50.00	0.00	0.00	0.00
Mopani	0.07	0.07	0.00	0.00	0.00	0.00
Sekhukhune	0.07	0.21	200.00	0.00	0.00	0.00
Vhembe	0.21	0.14	-33.33	0.00	0.00	0.00
Waterberg	0.21	0.07	-66.67	0.00	0.00	0.00



Mpumalanga

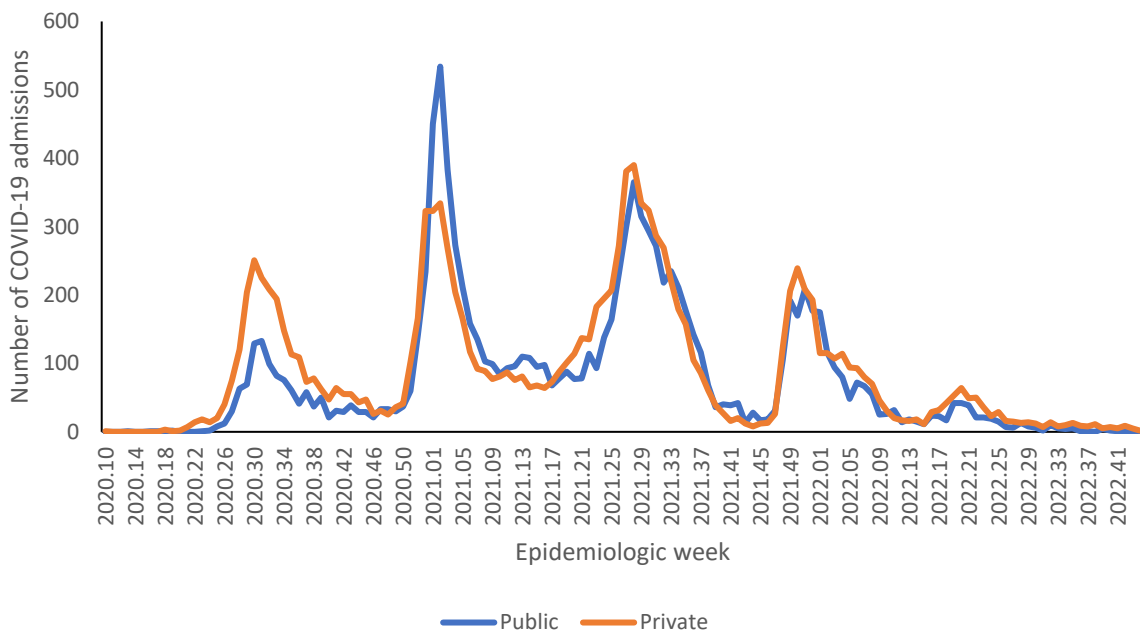


Figure 28: Number of reported COVID-19 admissions by health sector and epidemiologic week of diagnosis, Mpumalanga, 5 March 2020-5 November 2022, N=23,078

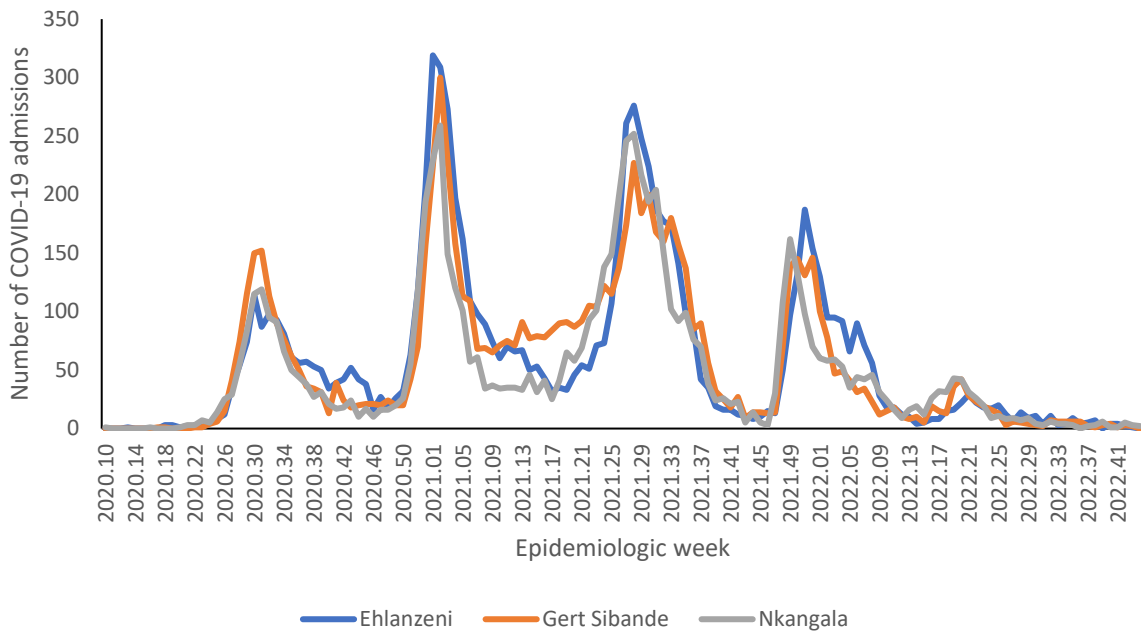


Figure 29: Number of reported COVID-19 admissions, by district and epidemiologic week, Mpumalanga, 5 March 2020-5 November 2022, N=23,078

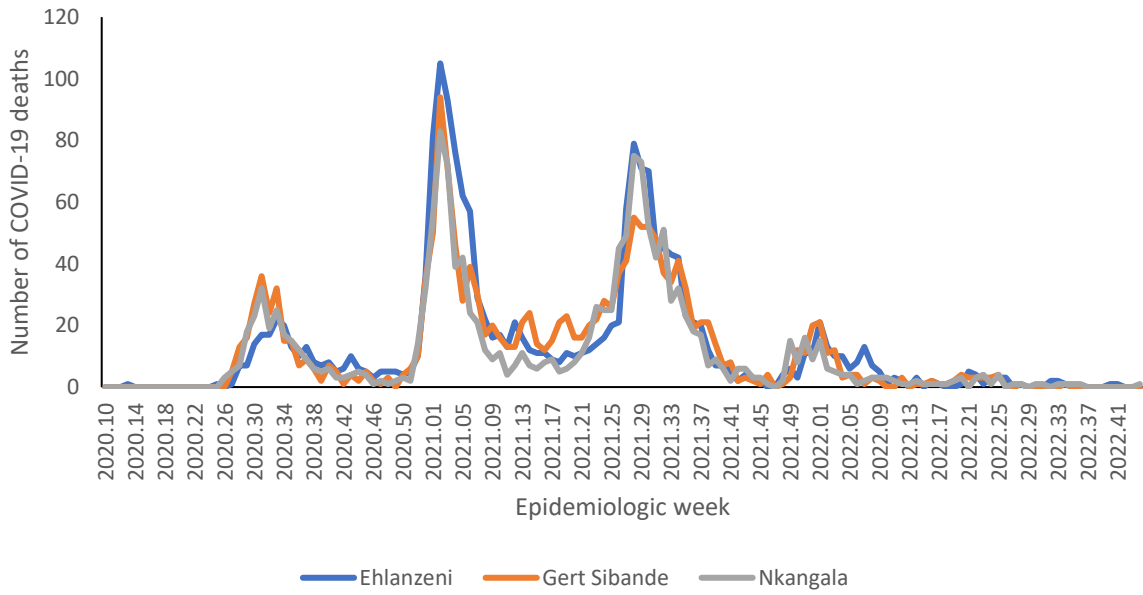


Figure 30: Number of reported COVID-19 in-hospital deaths, by district and epidemiologic week, Mpumalanga, 5 March 2020-5 November 2022, N=4,931

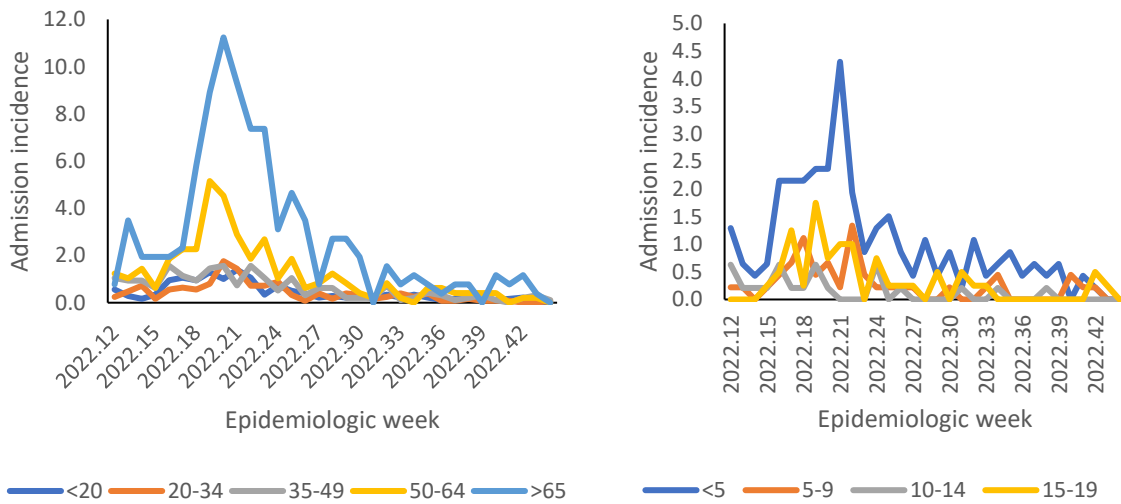


Figure 31: Incidence risk of COVID-19 admissions per 100,000 persons, by age group and epidemiologic week of diagnosis, Mpumalanga, 19 March 2022-5 November 2022

Table 10: Previous 14 days and current 14 days average COVID-19 admissions and deaths and percentage changes, Mpumalanga, 8 October-5 November 2022.

District	Previous 14 days admissions average	Current 14 days admissions average	Percentage change in admissions	Previous 14 days deaths average	Current 14 days deaths average	Percentage change in deaths
Ehlanzeni	0.43	0.07	-83.33	0.07	0.00	-100.00
Gert Sibande	0.29	0.14	-50.00	0.00	0.00	0.00
Nkangala	0.43	0.36	-16.67	0.00	0.07	0.00



North West

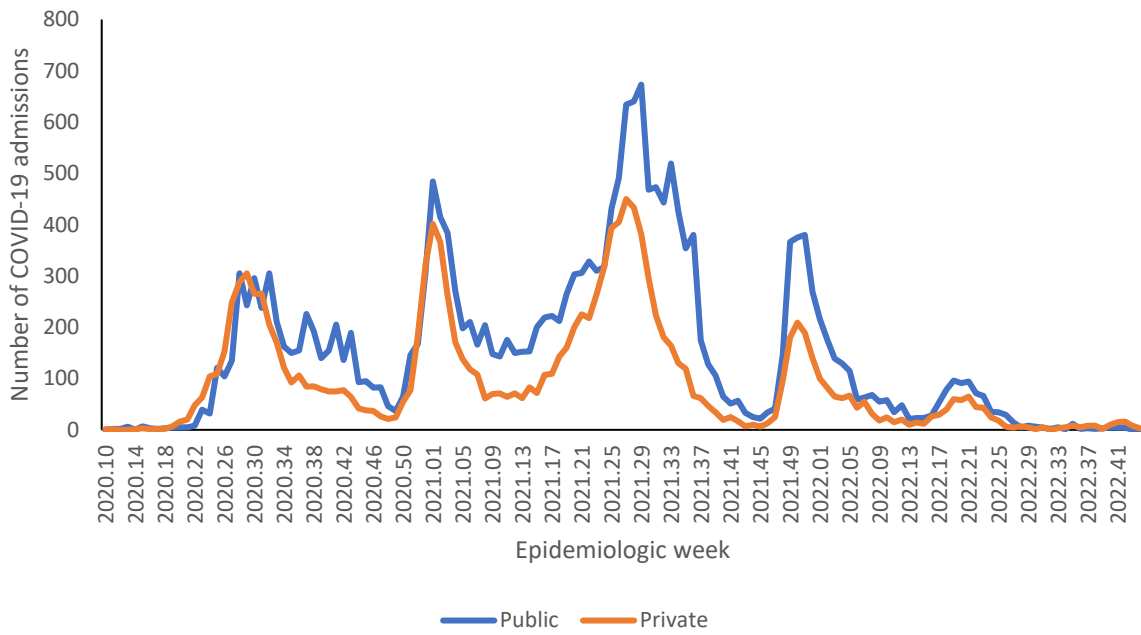


Figure 32: Number of reported COVID-19 admissions by health sector and epidemiologic week of diagnosis, North West, 5 March 2020-5 November 2022, N=34,277

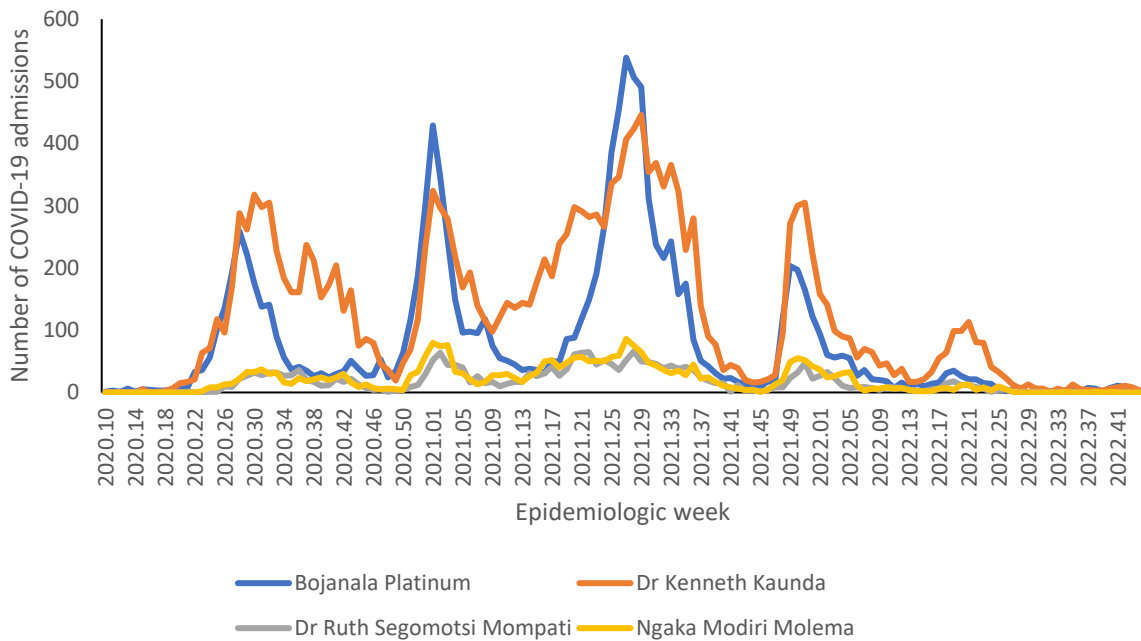


Figure 33: Number of reported COVID-19 admissions, by district and epidemiologic week, North West, 5 March 2020-5 November 2022, N=34,277

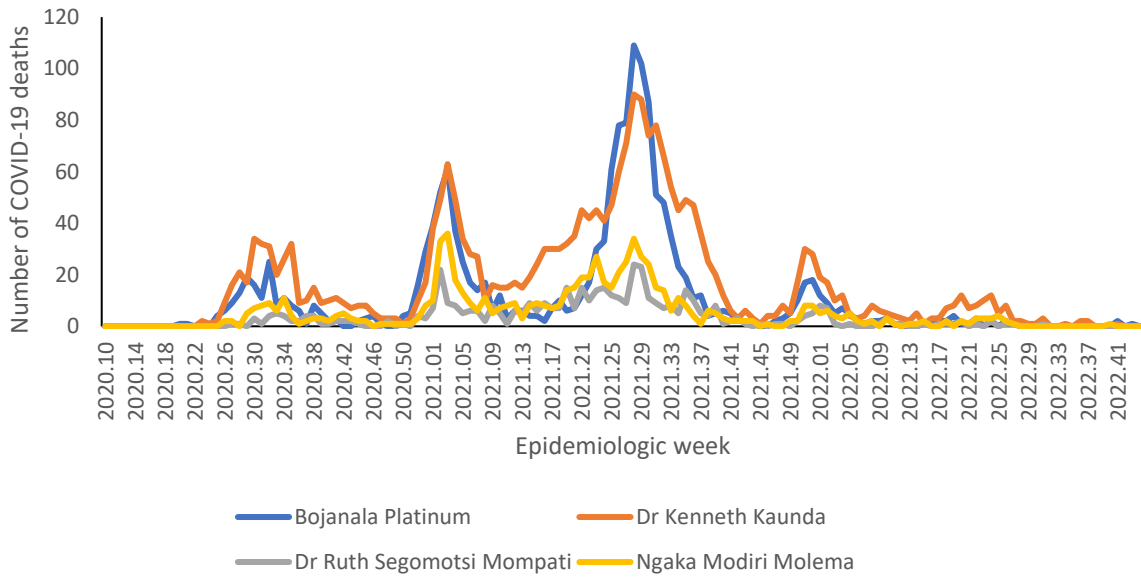


Figure 34: Number of reported COVID-19 in-hospital deaths, by district and epidemiologic week, North West, 5 March 2020-5 November 2022, N=5,018

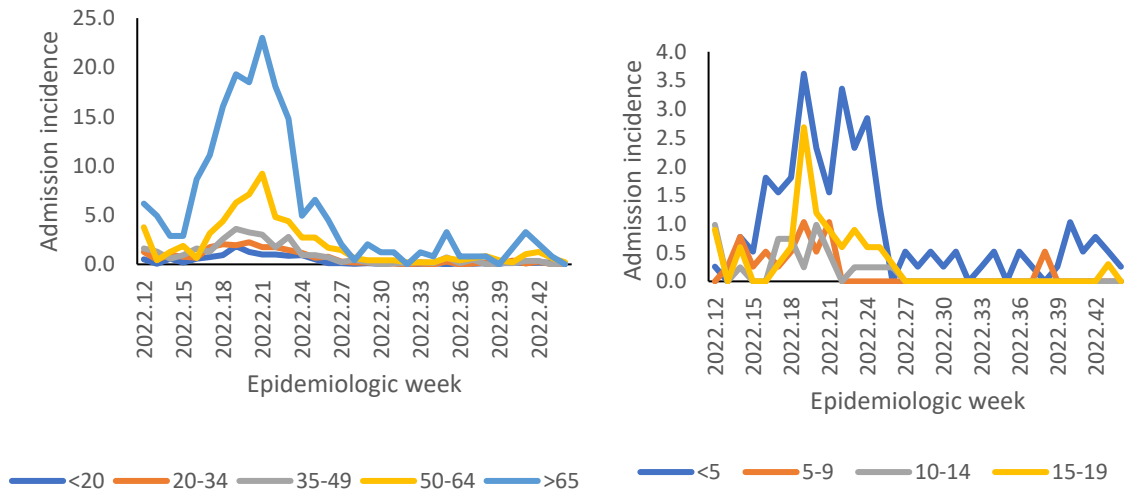


Figure 35: Incidence risk of COVID-19 admissions per 100,000 persons, by age group and epidemiologic week of diagnosis, North West, 19 March 2022-5 November 2022

Table 11: Previous 14 days and current 14 days average COVID-19 admissions and deaths and percentage changes, North West, 8 October-5 November 2022.

District	Previous 14 days admissions average	Current 14 days admissions average	Percentage change in admissions	Previous 14 days deaths average	Current 14 days deaths average	Percentage change in deaths
Bojanala Platinum	1.43	0.07	-95.00	0.14	0.07	-50.00
Dr Kenneth Kaunda	1.36	0.79	-42.11	0.07	0.00	-100.00
Dr Ruth Segomotsi Mompati	0.00	0.00	0.00	0.00	0.00	0.00
Ngaka Modiri Molema	0.00	0.00	0.00	0.00	0.00	0.00



Northern Cape

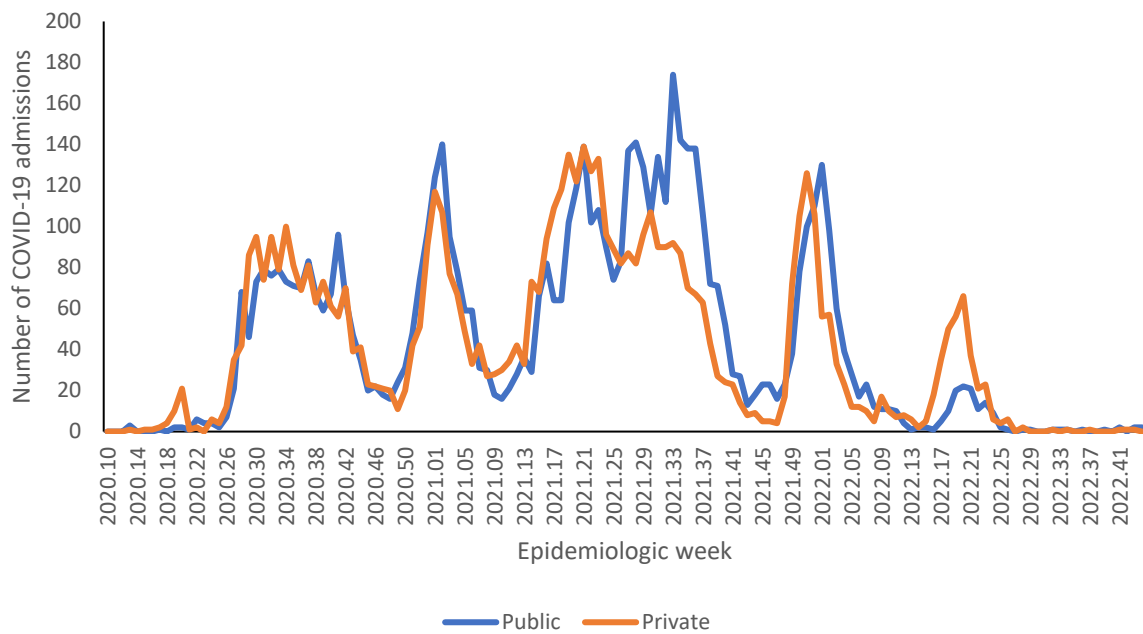


Figure 36: Number of reported COVID-19 admissions by health sector and epidemiologic week of diagnosis, Northern Cape, 5 March 2020-5 November 2022, N=11,919

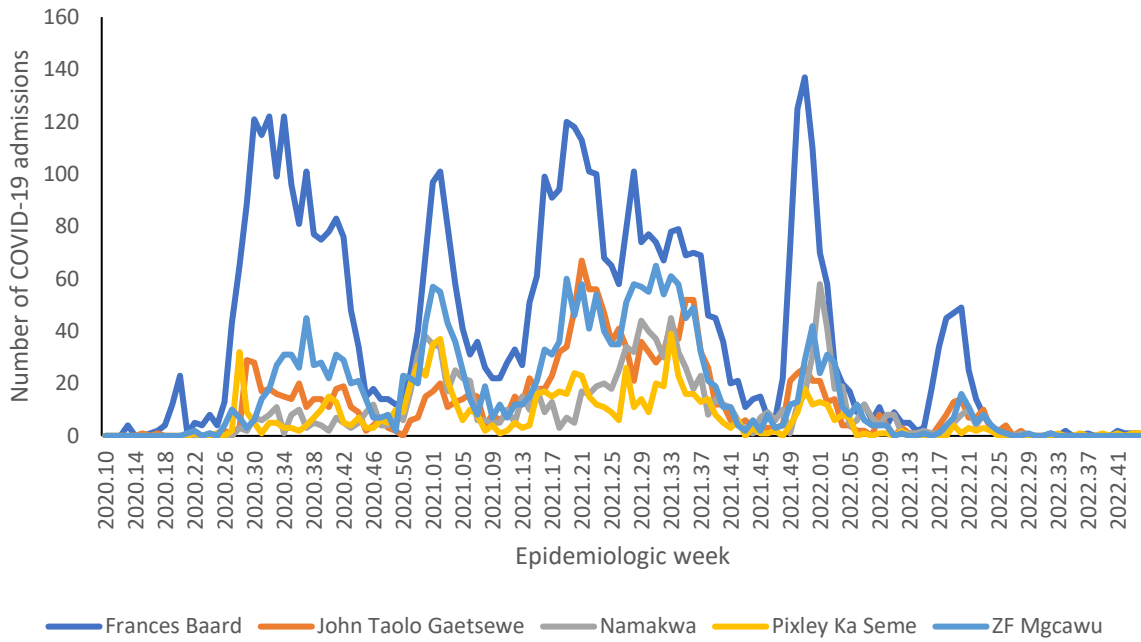


Figure 37: Number of reported COVID-19 admissions by district and epidemiologic week, Northern Cape, 5 March 2020-5 November 2022, N=11,919

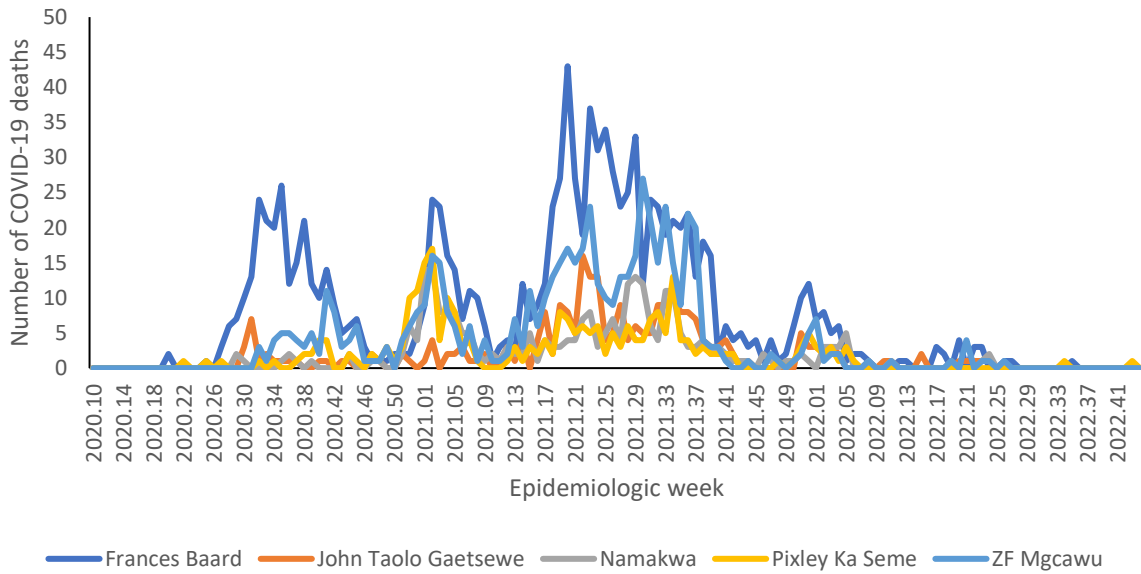


Figure 38: Number of reported COVID-19 in-hospital deaths, by district and epidemiologic week, Northern Cape, 5 March 2020-5 November 2022, N=2,459

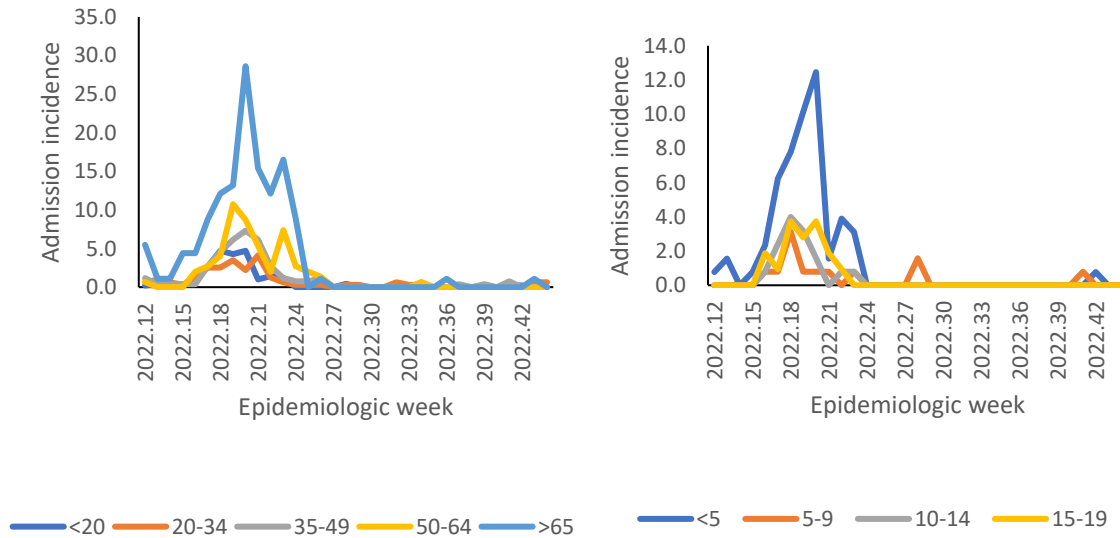


Figure 39: Incidence risk of COVID-19 admissions per 100,000 persons, by age group and epidemiologic week of diagnosis, Northern Cape, 19 March 2022- 5 November 2022



Table 12: Previous 14 days and current 14 days average COVID-19 admissions and deaths and percentage changes, Northern Cape, 8 October-5 November 2022.

District	Previous 14 days admissions average	Current 14 days admissions average	Percentage change in admissions	Previous 14 days deaths average	Current 14 days deaths average	Percentage change in deaths
Frances Baard	0.21	0.07	-66.67	0.00	0.00	0.00
John Taolo Gaetsewe	0.00	0.14	0.00	0.00	0.00	0.00
Namakwa	0.00	0.00	0.00	0.00	0.00	0.00
Pixley Ka Seme	0.07	0.14	100.00	0.00	0.07	0.00
ZF Mgcawu	0.00	0.00	0.00	0.00	0.00	0.00



Western Cape

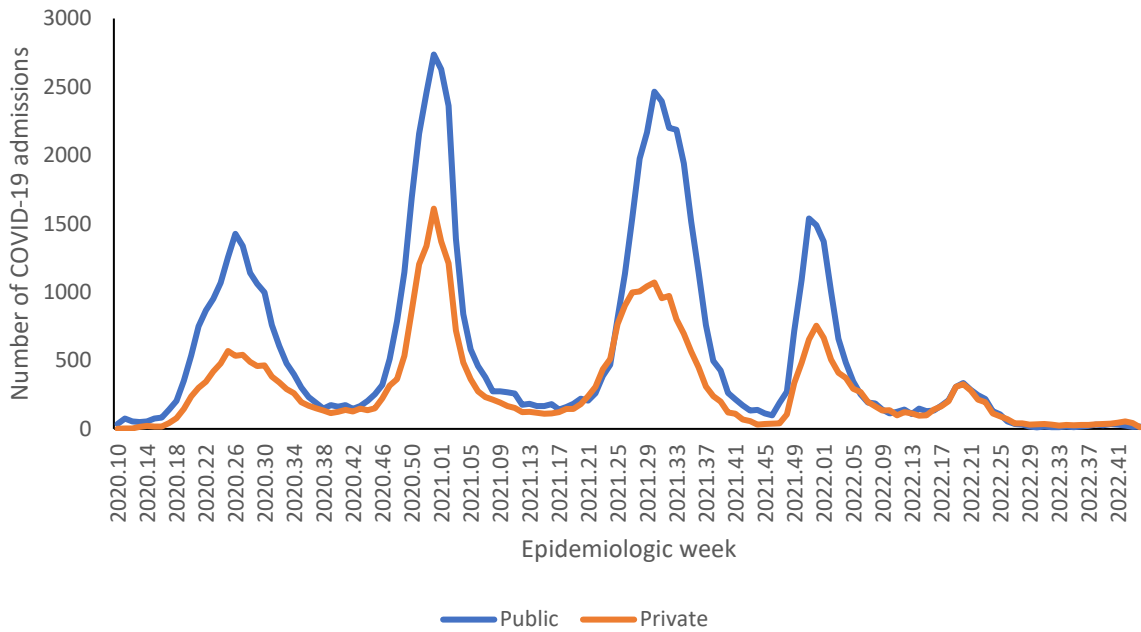


Figure 40: Number of reported COVID-19 admissions by health sector and epidemiologic week of diagnosis, Western Cape, 5 March 2020-5 November 2022, N=121,561

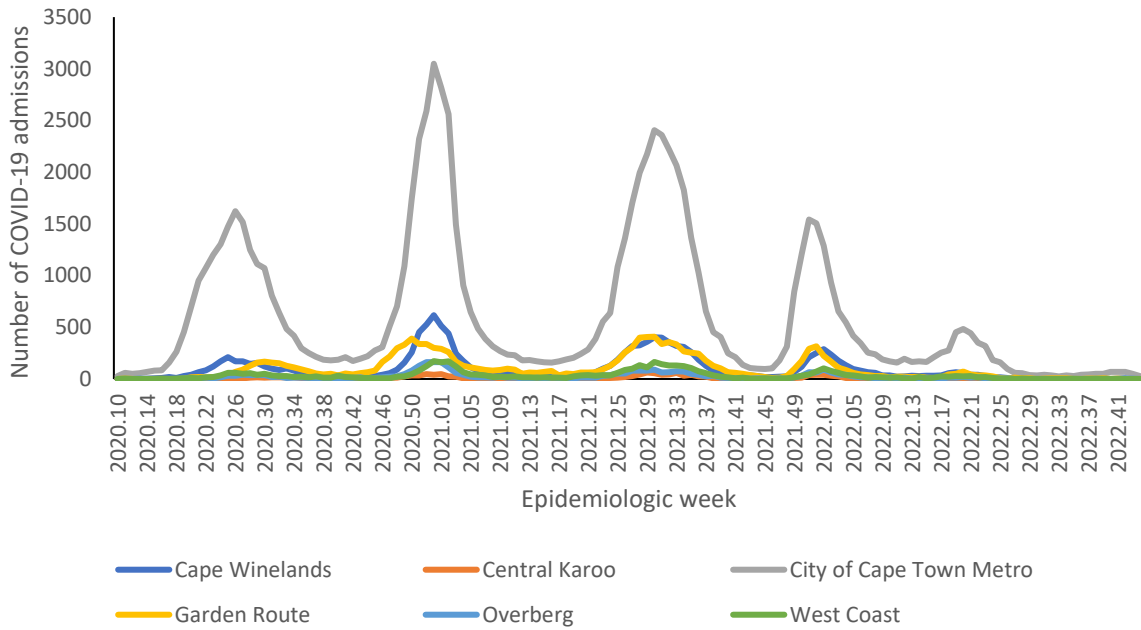


Figure 41: Number of reported COVID-19 admissions, by district and epidemiologic week, Western Cape, 5 March 2020-5 November 2022, N=121,561

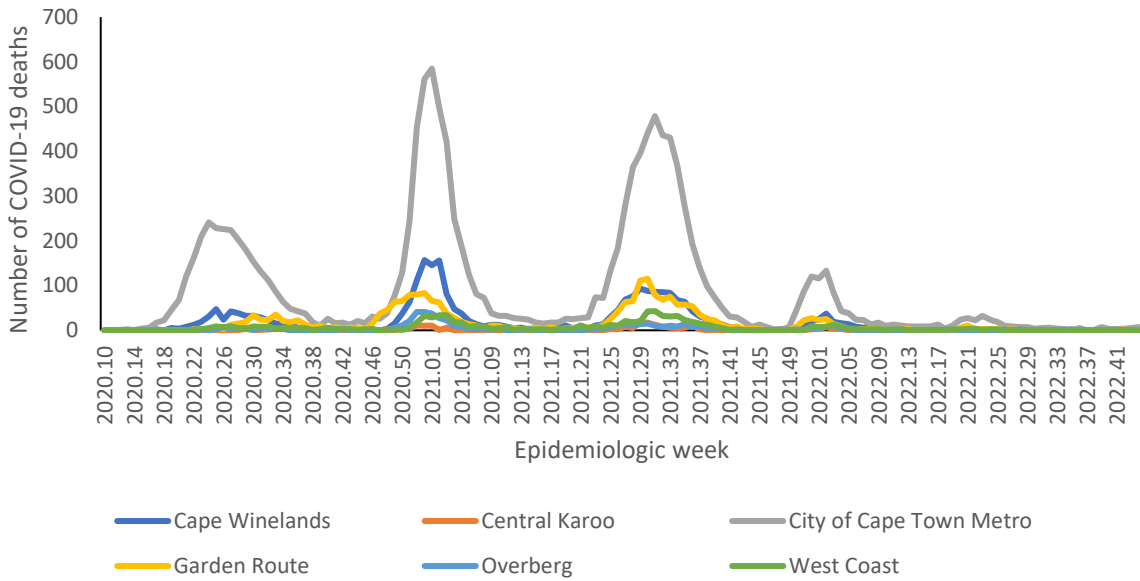


Figure 42: Number of reported COVID-19 in-hospital deaths, by district and epidemiologic week, Western Cape, 5 March 2020-5 November 2022, N=18,941

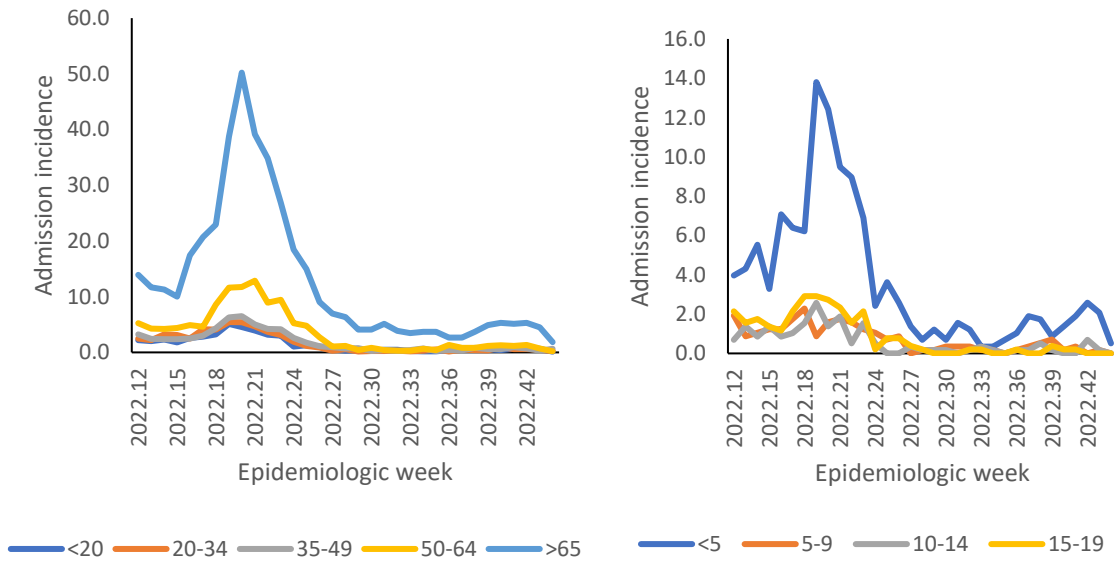


Figure 43: Incidence risk of COVID-19 admissions per 100,000 persons, by age group and epidemiological week of diagnosis, Western Cape, 19 March 2022- 5 November 2022

Table 13: Previous 14 days and current 14 days average COVID-19 admissions and deaths and percentage changes, Western Cape, 8 October-5 November 2022.

District	Previous 14 days admissions average	Current 14 days admissions average	Percentage change in admissions	Previous 14 days deaths average	Current 14 days deaths average	Percentage change in deaths
Cape Winelands	0.64	0.07	-88.89	0.00	0.00	0.00
Central Karoo	0.00	0.00	0.00	0.00	0.00	0.00
City of Cape Town Metro	9.93	5.50	-44.60	0.50	0.86	71.43
Garden Route	0.29	0.14	-50.00	0.14	0.07	-50.00
Overberg	0.21	0.36	66.67	0.00	0.00	0.00
West Coast	0.07	0.07	0.00	0.14	0.00	-100.00

Limitation

DATCOV now includes reporting from all hospitals with COVID-19 admissions, but many hospitals are yet to reach complete submission of historic data. Data quality in a surveillance system is dependent on the information submitted by healthcare institutions. It is not possible for the NICD to verify or check the quality of all these data, however, the NICD has built-in data quality checks. Delays in reporting of admissions and deaths may affect the numbers reported in the most recent week. The National Department of Health have recruited data capturers to support hospitals to improve data submission.

As hospitals reached capacity, admission criteria may change and therefore influence trends and inferences about the progression of the epidemic. DATCOV only reports hospital-based admissions and deaths and therefore does not include deaths occurring outside hospitals. DATCOV now has a module to record out-of-hospital deaths.

Severity data has some inherent limitations. We rely on a proxy indicator for severity and do not have clinical or laboratory parameters to ascertain clinical severity. In the early and late phases of the wave there is likely to be lower severity due to there being sufficient hospital capacity. It may take a few weeks for hospitalisation outcomes to accumulate. Early reporting on case fatality ratio is also biased particularly in older adults who may have longer admissions and are more likely to die.

Acknowledgements

All public and private sector hospitals submitting data to DATCOV

Private hospital groups submitting data to DATCOV:

- Netcare
- Life Healthcare
- Mediclinic Southern Africa
- National Hospital Network (NHN)
- Clinix Health Group
- Lenmed
- Joint Medical Holdings (JMH)

Appendix

Table 14: Percentage incidence change in hospital admissions over 14 days, by district, South Africa, 22 October 2022-5 November 2022.

Province	District	Total admissions	Incidence (per 100k)	New admissions	New admissions incidence (per 100k)	% Average change (14 days)
Eastern Cape	Alfred Nzo	2772	336.20	1	0.12	100.00
	Amathole	3319	424.12	0	0.00	100.00
	Buffalo City Metro	10697	1351.50	0	0.00	100.00
	Chris Hani	5354	751.37	0	0.00	-100.00
	Joe Gqabi	1220	355.77	0	0.00	100.00
	Nelson Mandela Bay Metro	17035	1412.05	6	0.50	-53.85
	O R Tambo	5060	329.95	5	0.33	66.67
	Sarah Baartman	3425	709.75	0	0.00	100.00
Free State	Fezile Dabi	3855	753.59	0	0.00	-100.00
	Lejweleputswa	6771	1036.62	0	0.00	-100.00
	Mangaung Metro	15490	1767.50	0	0.00	-100.00
	Thabo Mofutsanyana	5868	767.78	0	0.00	-100.00
	Xhariep	741	583.27	0	0.00	-100.00
Gauteng	City of Johannesburg Metro	57101	949.59	23	0.38	-20.69
	City of Tshwane Metro	44996	1177.80	27	0.71	-30.77
	Ekurhuleni Metro	34692	857.36	12	0.30	-55.56
	Sedibeng	10292	1056.66	1	0.10	-75.00
	West Rand	13970	1460.67	5	0.52	-28.57
KwaZulu-Natal	Amajuba	4746	837.03	0	0.00	-100.00
	eThekweni Metro	41360	1031.53	30	0.75	-23.08
	Harry Gwala	2830	559.14	0	0.00	-100.00
	iLembe	3081	442.85	2	0.29	100.00
	King Cetshwayo	9840	1031.31	7	0.73	40.00
	Ugu	5971	742.24	2	0.25	-33.33
	uMgungundlovu	12013	1053.85	5	0.44	400.00
	uMkhanyakude	1524	221.52	0	0.00	-100.00
	Umzinyathi	2427	430.25	1	0.18	0.00
	UThukela	3377	482.17	3	0.43	-25.00
Limpopo	Zululand	2551	288.52	1	0.11	100.00
	Capricorn	8766	660.62	1	0.08	-50.00
	Mopani	3830	318.46	0	0.00	-100.00
	Sekhukhune	2151	176.80	1	0.08	-50.00
	Vhembe	3093	216.24	0	0.00	-100.00



	Waterberg	3378	450.31	0	0.00	-100.00
Mpumalanga	Ehlanzeni	8181	447.44	0	0.00	-100.00
	Gert Sibande	7857	619.70	0	0.00	-100.00
	Nkangala	7040	427.36	2	0.12	-33.33
North West	Bojanala Platinum	11437	587.06	1	0.05	100.00
	Dr Kenneth Kaunda	17634	2195.19	3	0.37	-62.50
	Dr Ruth Segomotsi Mompoti	2392	512.73	0	0.00	100.00
	Ngaka Modiri Molema	2814	310.99	0	0.00	100.00
Northern Cape	Frances Baard	5602	1346.73	0	0.00	-100.00
	John Taolo Gaetsewe	1702	615.87	1	0.36	0.00
	Namakwa	1350	1153.93	0	0.00	100.00
	Pixley Ka Seme	936	444.84	1	0.48	0.00
	ZF Mgcawu	2329	822.06	0	0.00	100.00
Western Cape	Cape Winelands	13650	1428.10	2	0.21	100.00
	Central Karoo	1405	1853.76	0	0.00	100.00
	City of Cape Town Metro	85184	1820.60	39	0.83	-32.76
	Garden Route	13392	2131.66	0	0.00	-100.00
	Overberg	3343	1094.17	0	0.00	-100.00
	West Coast	4594	978.50	1	0.21	100.00

Table 15: Number of reported COVID-19 admissions and in-hospital deaths by age and gender, South Africa, 5 March 2020-5 November 2022.

Age Group (Years)	ADMISSIONS				DEATHS			
	Female	Male	Unknown	Total	Female	Male	Unknown	Total
0-4	7633	9698	54	17385	184	214	4	402
5-9	2108	2798	8	4914	31	39	0	70
10-14	2759	2861	12	5632	70	71	1	142
15-19	7389	4168	6	11563	164	140	0	304
20-24	11409	5778	10	17197	368	280	1	649
25-29	18006	8160	10	26176	783	536	0	1319
30-34	23082	12835	15	35932	1320	1134	2	2456
35-39	23575	16775	22	40372	1879	1783	4	3666
40-44	20779	18462	17	39258	2294	2376	0	4670
45-49	22879	22373	12	45264	3238	3460	1	6699
50-54	26360	24720	10	51090	4408	4587	2	8997
55-59	29244	26722	16	55982	6213	6257	5	12475
60-64	26157	23909	16	50082	6697	6913	6	13616
65-69	22610	20196	19	42825	6955	6520	6	13481
70-74	19461	17199	19	36679	6191	6057	4	12252
75-79	14860	12316	9	27185	4944	4641	3	9588
80-84	11424	8175	8	19607	4064	3192	3	7259
85-89	6314	3957	2	10273	2301	1685	0	3986
90-94	2782	1416	1	4199	1128	667	0	1795
>=95	844	396	3	1243	373	168	0	541
Unknown	856	669	46	1571	46	43	0	89
Total	300531	243583	315	544429	53651	50763	42	104456



**NATIONAL INSTITUTE FOR
COMMUNICABLE DISEASES**

Division of the National Health Laboratory Service