

## COVID-19 Hospital Surveillance

### Update: Week 45, 2022

#### Overview of report

This report summarises data of COVID-19 cases admitted to hospital surveillance sites in all provinces. The report is based on data collected from 5 March 2020 to 12 November 2022.

#### Highlights

- There was a 40% decrease in the number of new admissions in week 45 2022 (286) compared to the number of admissions in week 44 2022 (377). Delays in reporting of admissions and deaths may affect the numbers reported in the most recent week.
- KwaZulu-Natal had the highest number of admissions in the past week (97/286, 33.9%), followed by Gauteng (82/286, 28.7%) and Western Cape (51/286, 17.8%). North West had the lowest number of admissions (5/286, 1.7%).
- The highest weekly incidence risk of COVID-19 admissions reported in week 45 of 2022 was in the ≥65-year age group (2.7 admissions per 100 000 persons), and the lowest weekly incidence risk was in 20-34-year age group (0.2 admissions per 100 000 persons). An increased incidence risk of COVID-19 admissions has been observed in children <5 years since week 40.

## Methods

Data on hospitalisation was accessed from DATCOV, a hospital surveillance system for COVID-19 admissions, initiated on the 1 April 2020. A COVID-19 case was defined as a person with a positive reverse transcriptase polymerase chain reaction (RT-PCR) assay for SARS-CoV-2 or a person who had a positive SARS-CoV-2 antigen test who was admitted to hospital.

Data on SARS-CoV-2 cases diagnosed in public and private laboratories submitted to the NICD were reported from the line list on the NMCSS.

Case fatality ratio (CFR) was calculated for all closed cases, i.e., COVID-19 deaths divided by COVID-19 deaths plus COVID-19 discharges, excluding individuals who are still admitted in hospital. For the calculation of cumulative incidence risks, StatsSA mid-year population estimates for 2021 were utilised. For comparisons of change in admission, we used 14-day daily average admissions in the current 14-day period compared to the previous 14-day period.

Severity was defined as patients receiving oxygen or invasive ventilation, treated in high care or intensive care wards, developing acute respiratory distress syndrome, or died. While oxygen, ventilation, and ward of stay variables are updated daily for all admissions in the private sector, there may be delays with the data being updated in the public sector. Also, as patients remain in hospital their condition may change, and percentage of severity may change over time.

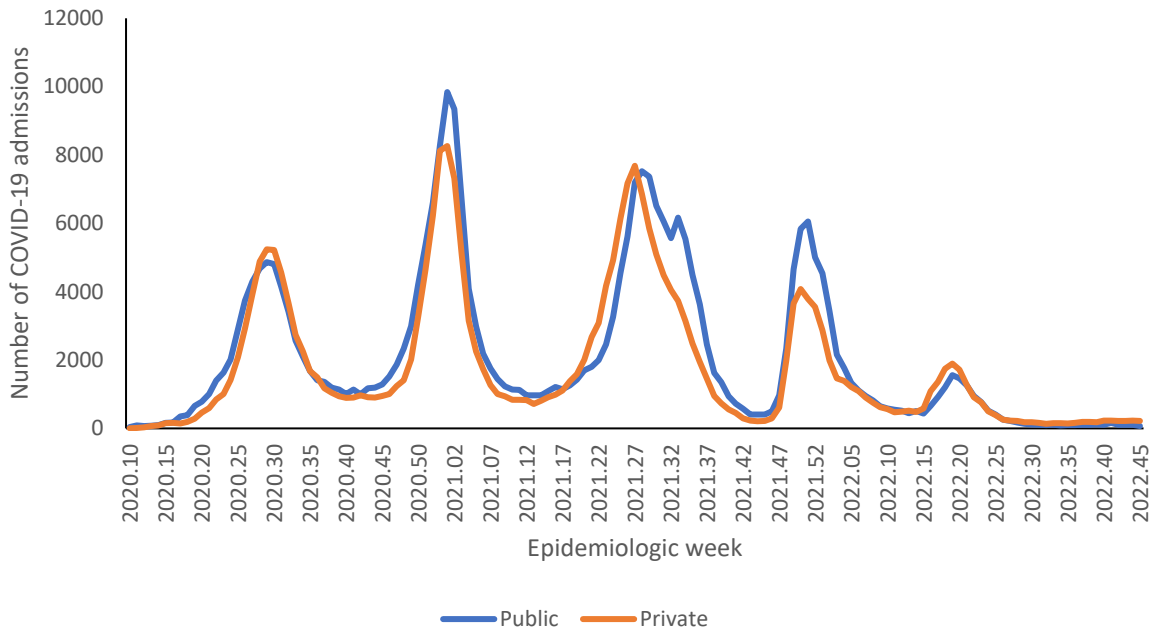
Data are submitted by public and private hospitals that have agreed to report COVID-19 admissions through DATCOV surveillance in all nine provinces of South Africa. On 15 July 2020, the National Health Council decided that all hospitals should report to DATCOV. As of 12 November 2022, a total of 667 facilities submitted data on hospitalised COVID-19 cases, 406 from public sector and 262 from private sector (Table 1). This reflects 100% coverage of all public and private hospitals that have had COVID-19 admissions. As new hospitals join the surveillance system, they have retrospectively captured all admissions recorded although there may be some backlogs in retrospective data capture.

**Table 1:** Number of hospitals reporting data on COVID-19 admissions by province and sector, South Africa, 5 March 2020-12 November 2022.

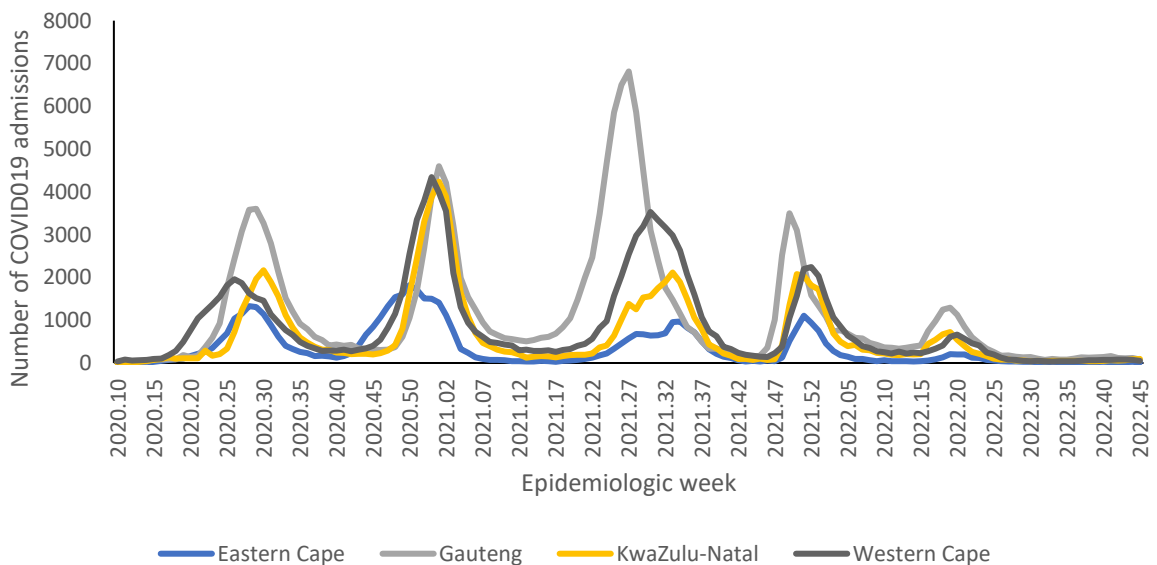
Facilities reporting	Public	Private
Eastern Cape	86	18
Free State	34	20
Gauteng	39	99
KwaZulu-Natal	71	47
Limpopo	41	7
Mpumalanga	31	9
North West	17	13
Northern Cape	29	6
Western Cape	59	43
South Africa	406	262

## Results

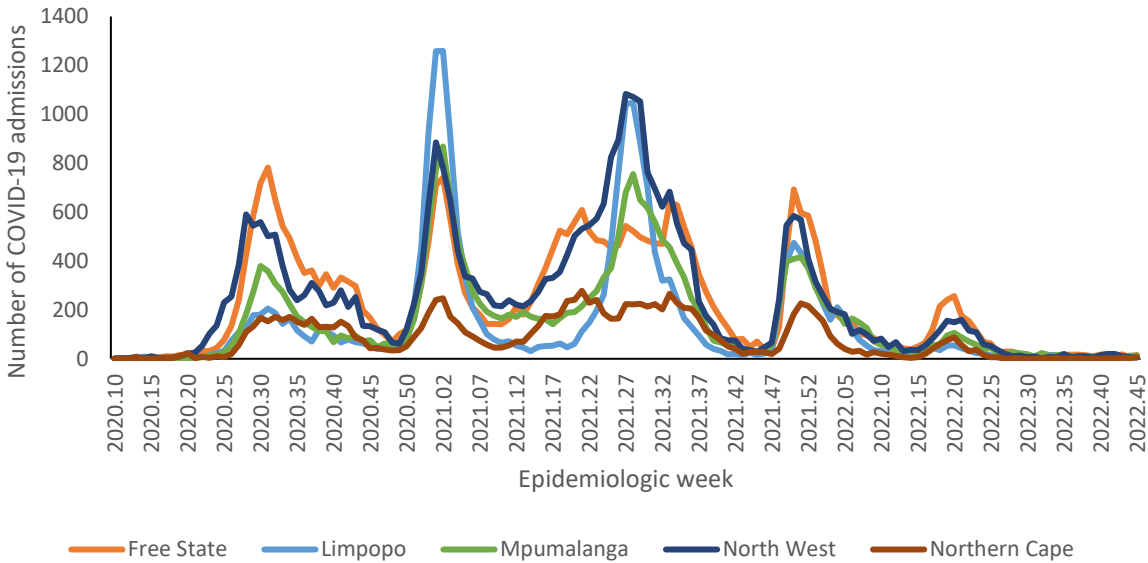
### Epidemiological and demographic trends in admissions



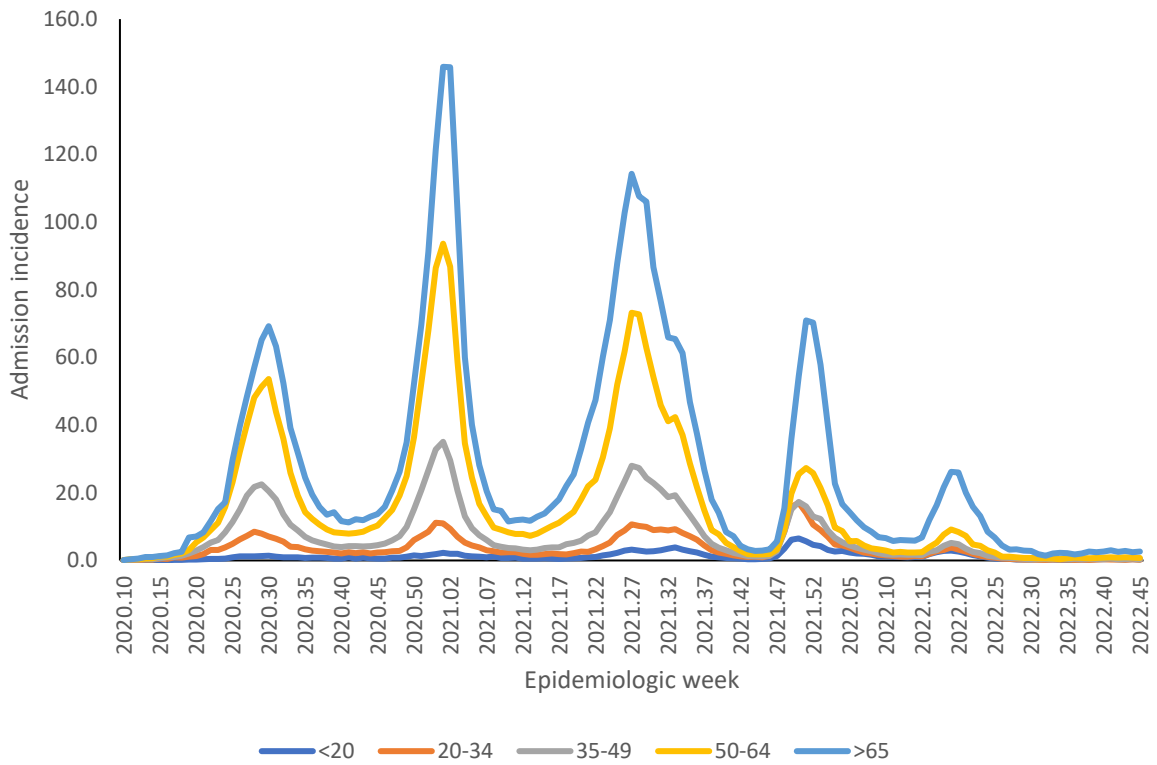
**Figure 1:** Number of reported COVID-19 admissions by health sector and epidemiologic week of diagnosis, South Africa, 5 March 2020-12 November 2022, N=544,836



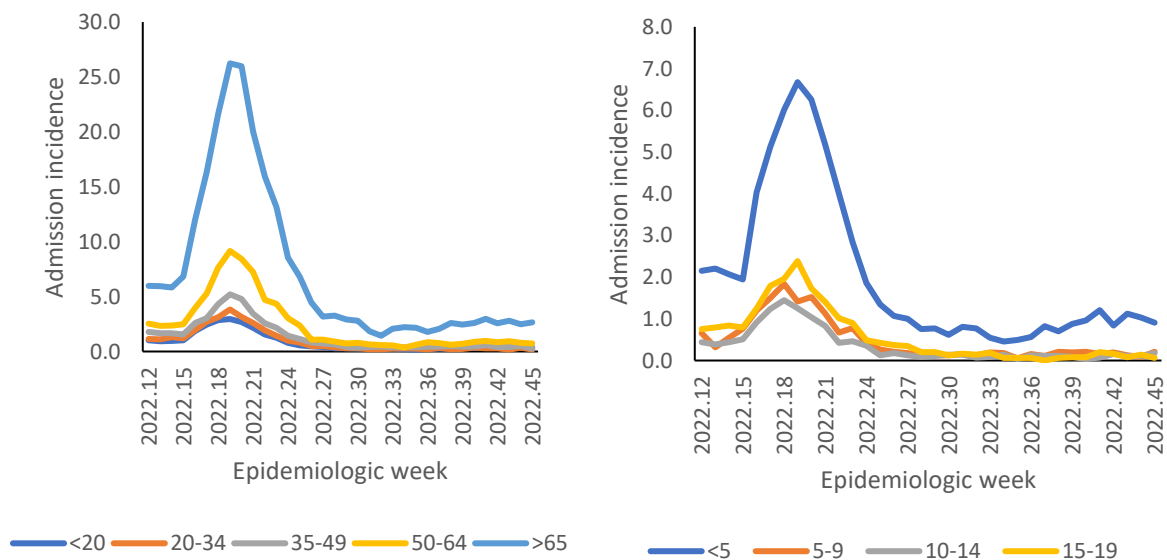
**Figure 2a:** Number of reported COVID-19 admissions, by provinces with highest admissions and epidemiologic week of diagnosis, South Africa, 5 March 2020-12 November 2022, N=544,836



**Figure 2b:** Number of reported COVID-19 admissions, by provinces with lowest admissions and epidemiologic week of diagnosis, South Africa, 5 March 2020-12 November 2022, N=544,836

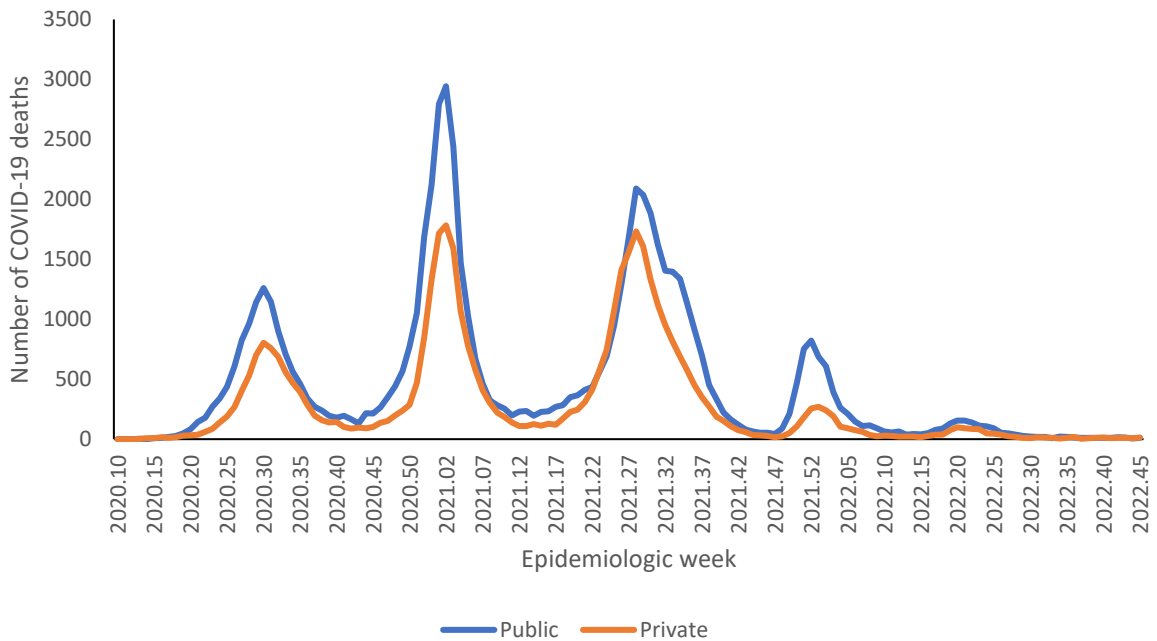


**Figure 3:** Incidence risk of COVID-19 admissions per 100,000 persons, by age group and epidemiologic week of diagnosis, South Africa, 5 March 2020-12 November 2022, N=544,836

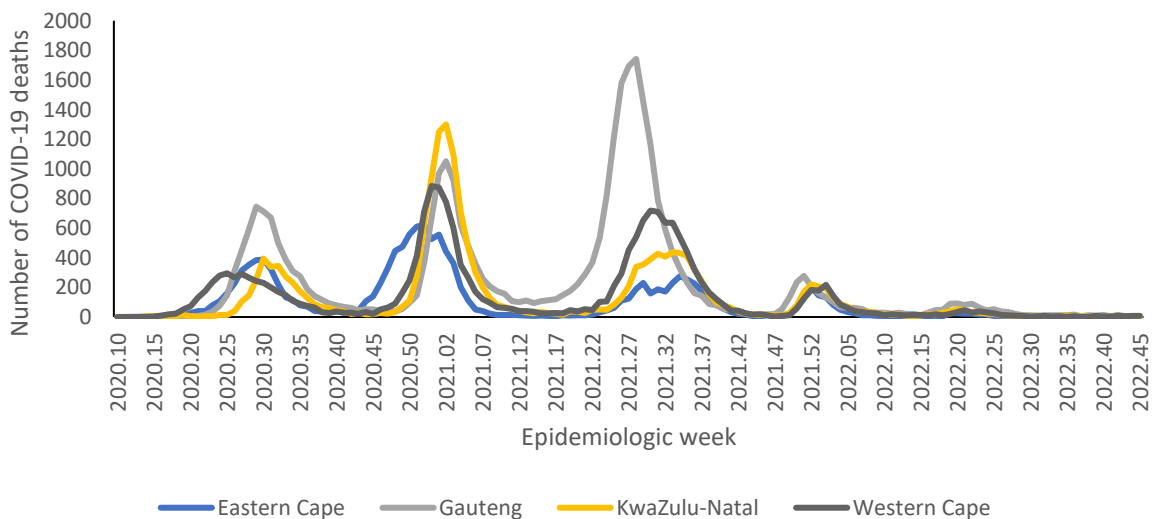


**Figure 4:** Incidence risk of COVID-19 admissions per 100,000 persons, by age group and epidemiologic week of diagnosis, South Africa, 19 March 2022-12 November 2022

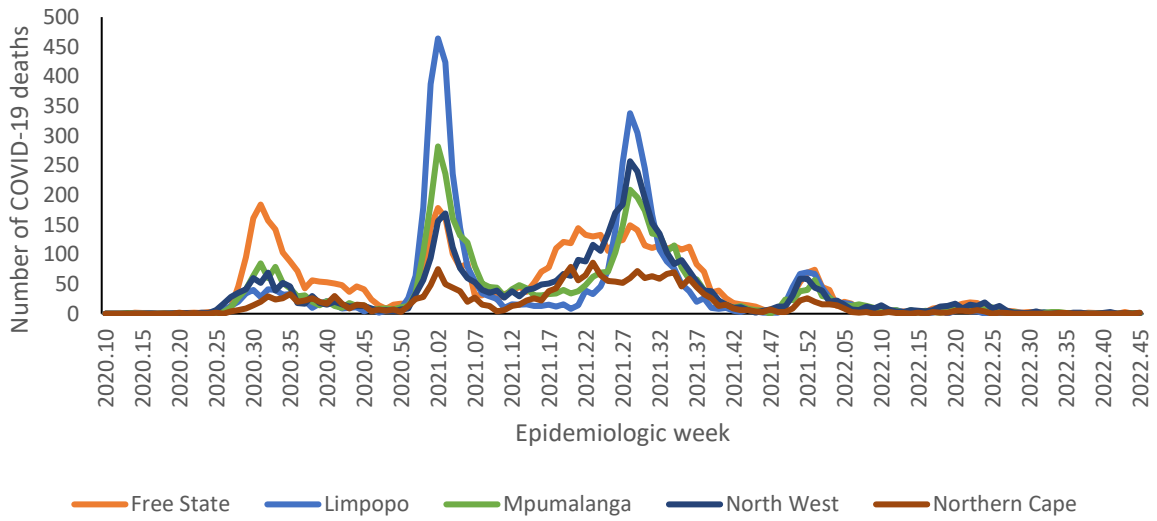
### Epidemiological and demographic trends in in-hospital mortality



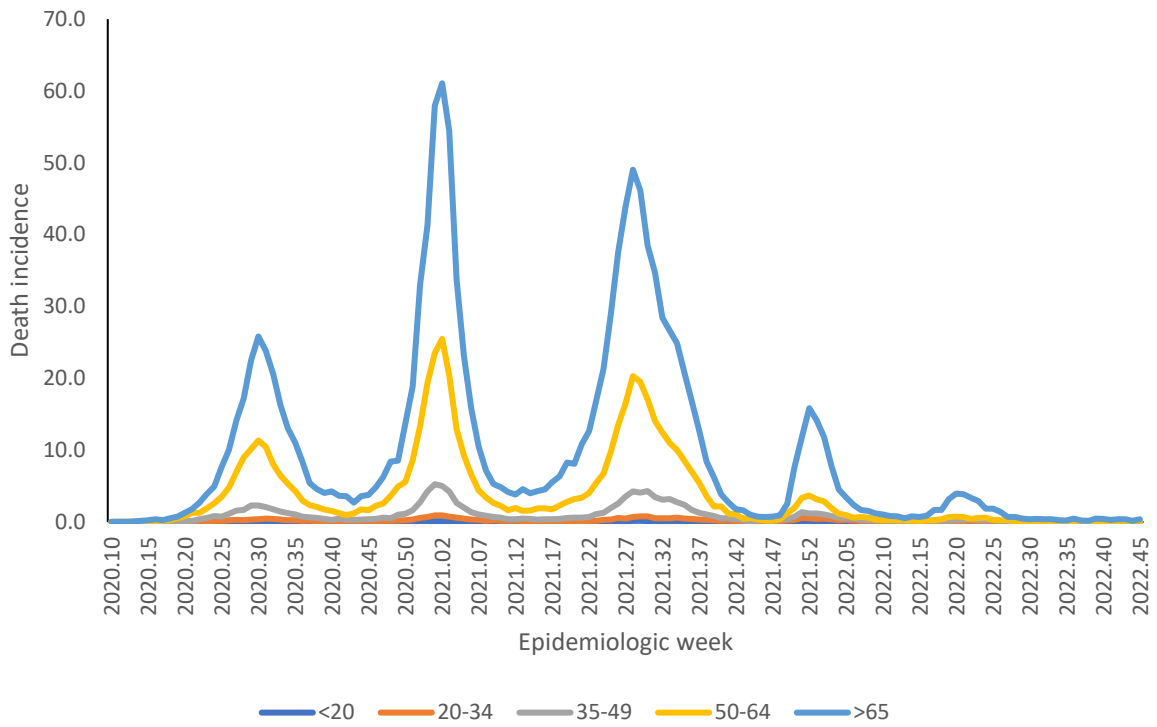
**Figure 5:** Number of reported COVID-19 in-hospital deaths, by health sector and epidemiologic week, South Africa, 5 March 2020-12 November 2022, N=104,492



**Figure 6a:** Number of reported COVID-19 in-hospital deaths, by province with highest deaths and epidemiologic week of death, South Africa, 5 March 2020-12 November 2022, N=104,492



**Figure 6b:** Number of reported COVID-19 in-hospital deaths, by province with lowest deaths and epidemiologic week of death, South Africa, 5 March 2020-12 November 2022, N=104,492



**Figure 7:** Incidence risk of COVID-19 in-hospital deaths per 100,000 persons, by age group and epidemiologic week of death, South Africa, 5 March 2020-12 November 2022, N=104,492



## Provincial trends

**Table 2:** Number and cumulative incidence risk of COVID-19 hospitalisations and in-hospital deaths per 100,000 persons by province, South Africa, 5 March 2020-12 November 2022.

Province	Provincial Population mid 2020*	Cumulative admissions	Cumulative incidence risk of admissions / 100,000	Cumulative deaths	Cumulative incidence risk of deaths / 100,000
Eastern Cape	6676590	48906	732.5	13316	199.4
Free State	2932441	32752	1116.9	6161	210.1
Gauteng	15810388	161 214	1019.7	30705	194.2
KwaZulu-Natal	11513575	89869	780.5	17625	153.1
Limpopo	5926724	21232	358.2	5332	90.0
Mpumalanga	4743584	23110	487.2	4931	104.0
North West	4122854	34 287	831.6	5018	121.7
Northern Cape	1303047	11 927	915.3	2461	188.9
Western Cape	7113776	121 539	1708.5	18943	266.3
<b>South Africa</b>	<b>60142978</b>	<b>544 836</b>	<b>905.9</b>	<b>104 492</b>	<b>173.7</b>

\*StatsSA mid-year population estimates 2020

**Table 3:** Previous 14 days and current 14 days daily average COVID-19 admissions and deaths and percentage changes, South Africa, 15 October-12 November 2022.

Province	Hospital admissions		Percentage change in admissions	Hospital deaths		Percentage change in deaths
	Previous 14 days average admissions	Current 14 days average admissions		Previous 14 days average deaths	Current 14 days average deaths	
Eastern Cape	2.86	2.57	-10.00	0.36	0.50	40.00
Free State	1.86	1.57	-15.38	0.21	0.00	-100.00
Gauteng	16.50	14.07	-14.72	1.43	0.43	-70.00
KwaZulu-Natal	8.57	13.14	53.33	0.57	0.43	-25.00
Limpopo	1.07	1.00	-6.67	0.00	0.00	0.00
Mpumalanga	1.36	1.86	36.84	0.00	0.07	0.00
North West	2.14	0.86	-60.00	0.07	0.07	0.00
Northern Cape	0.36	0.64	80.00	0.07	0.14	100.00
Western Cape	11.29	8.64	-23.42	0.93	1.14	23.08

\* Reporting of new admissions in the most recent week may be delayed

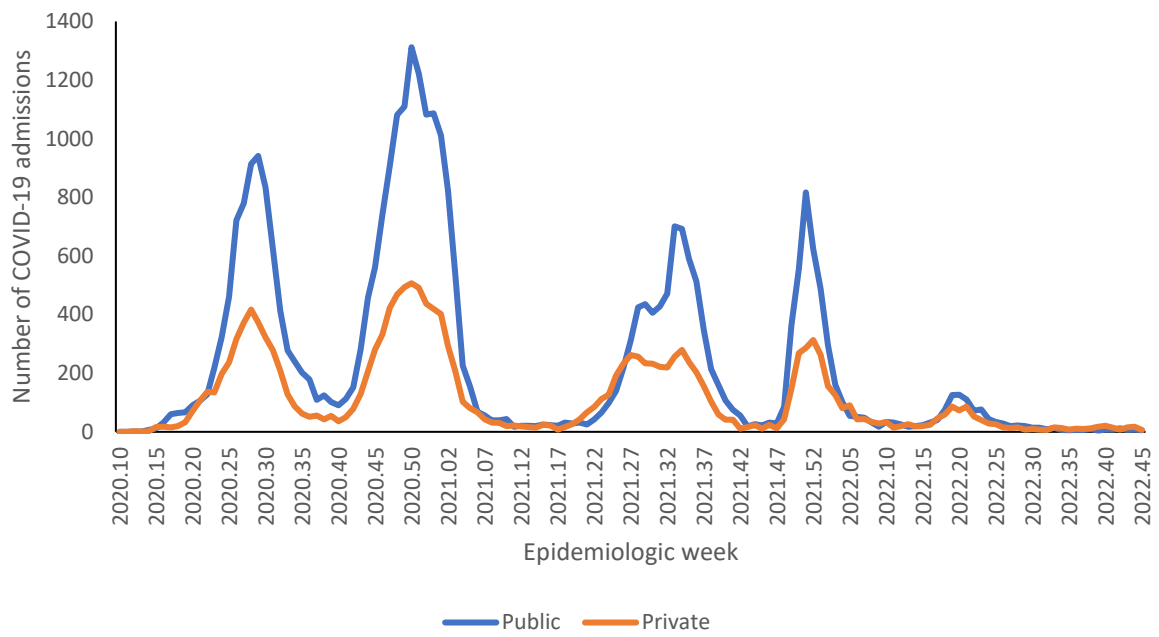


**Table 4:** Previous 7 days and current 7 days daily average COVID-19 admissions and deaths and percentage changes, South Africa, 29 October-12 November 2022.

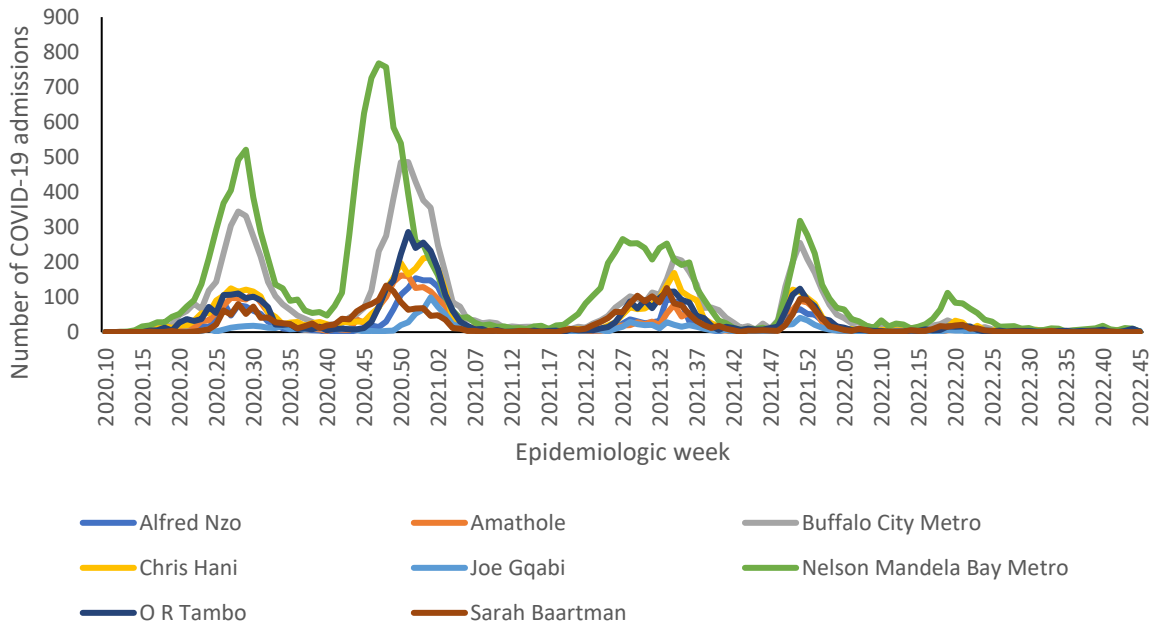
Province	Hospital admissions		Percentage change in admissions	Hospital deaths		Percentage change in deaths
	Previous 7 days average admissions	Current 7 days average admissions		Previous 7 days average deaths	Current 7 days average deaths	
Eastern Cape	3.57	1.57	-56.00	0.29	0.71	150.00
Free State	1.00	2.14	114.29	0.00	0.00	0.00
Gauteng	16.71	11.43	-31.62	0.43	0.43	0.00
KwaZulu-Natal	12.43	13.86	11.49	0.14	0.71	400.00
Limpopo	1.14	0.86	-25.00	0.00	0.00	0.00
Mpumalanga	1.86	1.86	0.00	0.14	0.00	-100.00
North West	1.00	0.71	-28.57	0.00	0.14	0.00
Northern Cape	0.43	0.86	100.00	0.00	0.29	0.00
Western Cape	10.00	7.29	-27.14	1.14	1.14	0.00

\* Reporting of new admissions in the most recent week may be delayed

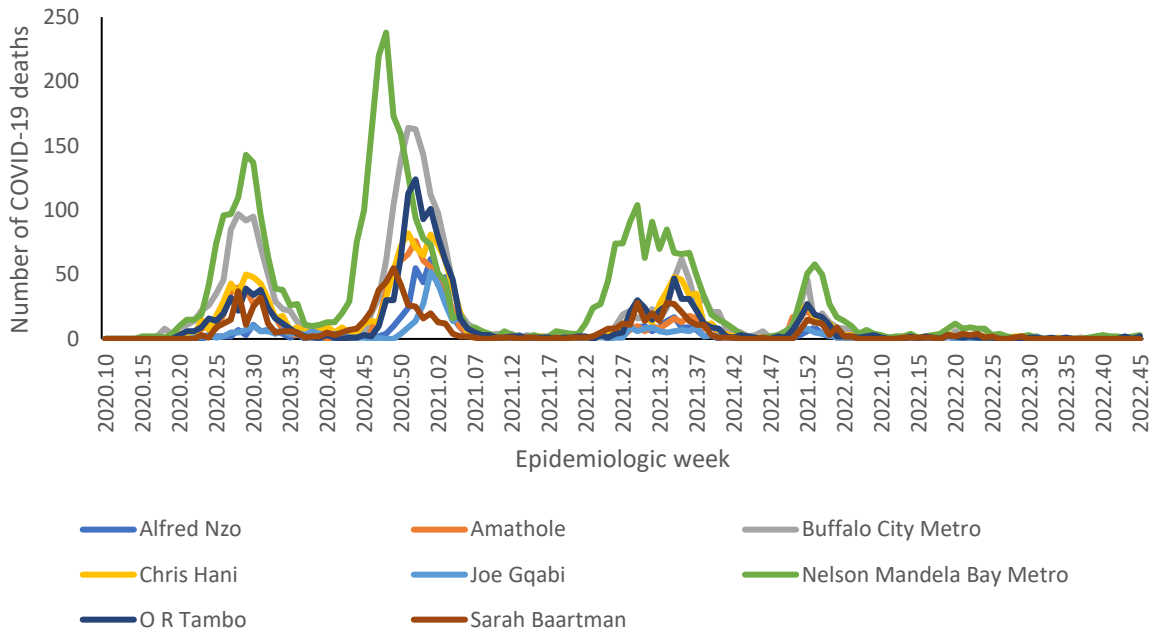
## Eastern Cape



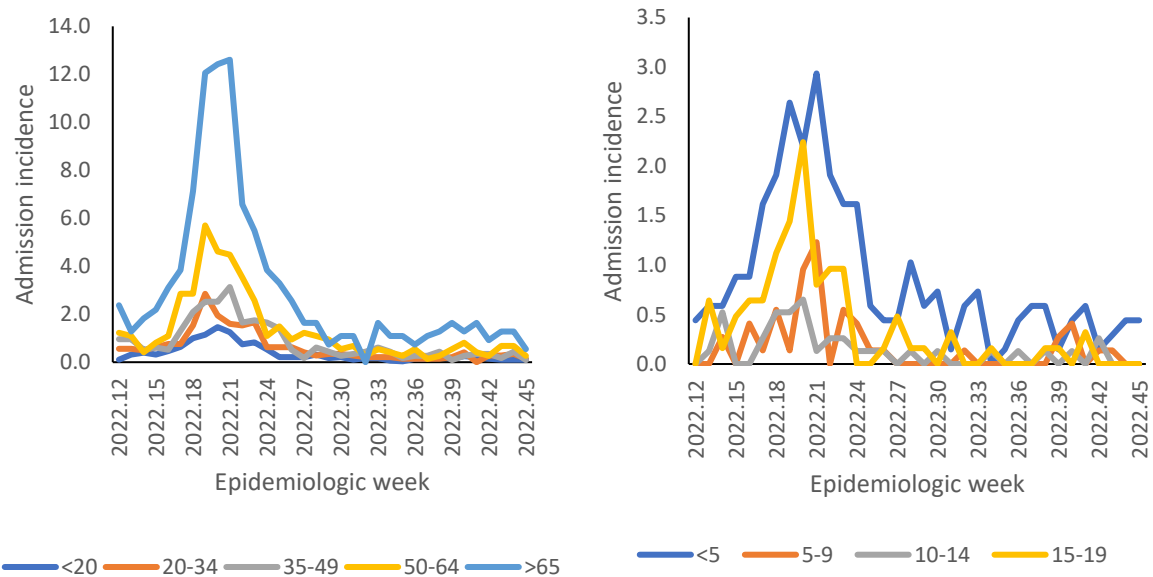
**Figure 8:** Number of reported COVID-19 admissions by health sector and epidemiologic week of diagnosis, Eastern Cape, 5 March 2020-12 November 2022, N=48,906



**Figure 9:** Number of reported COVID-19 admissions, by district and epidemiologic week, Eastern Cape, 5 March 2020-12 November 2022, N=48,906



**Figure 10:** Number of reported COVID-19 in-hospital deaths, by district and epidemiologic week, Eastern Cape, 5 March 2020-12 November 2022, N=13,316



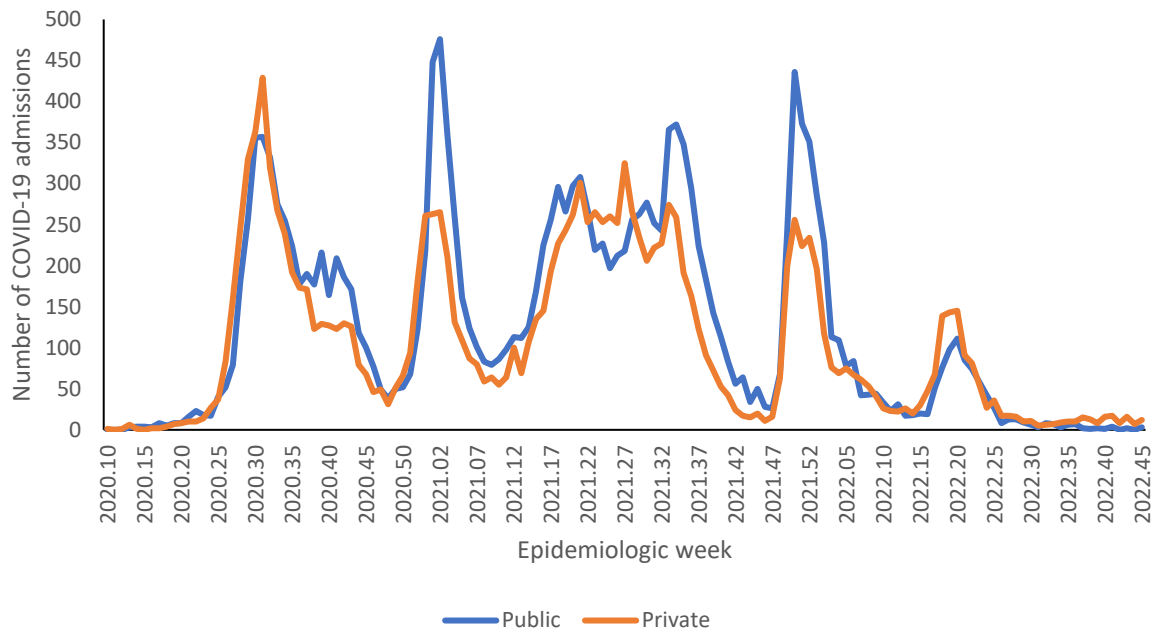
**Figure 11:** Incidence risk of COVID-19 admissions per 100,000 persons by age group and epidemiologic week of diagnosis, Eastern Cape, 19 March 2022-12 November 2022

**Table 5:** Previous 14 days and current 14 days average COVID-19 admissions and deaths and percentage changes, Eastern Cape, 15 October-12 November 2022.

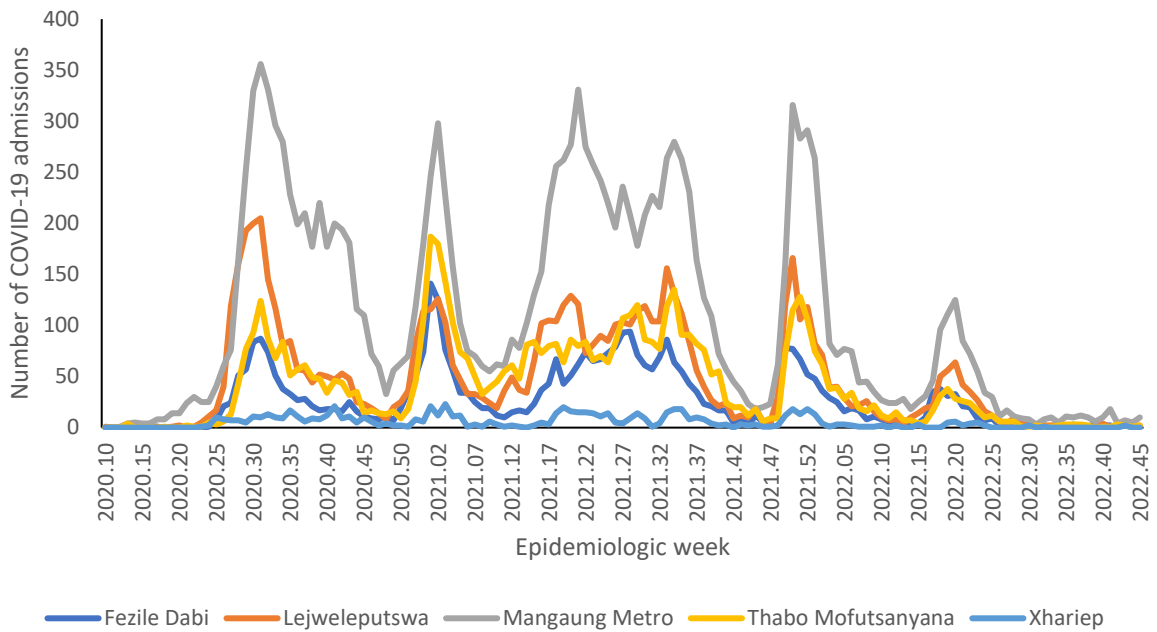
<b>District</b>	<b>Previous 14 days admissions average</b>	<b>Current 14 days admissions average</b>	<b>Percentage change in admissions</b>	<b>Previous 14 days deaths average</b>	<b>Current 14 days deaths average</b>	<b>Percentage change in deaths</b>
Alfred Nzo	0.29	0.29	0.00	0.00	0.00	0.00
Amathole	0.00	0.07	0.00	0.00	0.00	0.00
Buffalo City Metro	0.14	0.21	50.00	0.00	0.00	0.00
Chris Hani	0.86	0.00	-100.00	0.00	0.00	0.00
Joe Gqabi	0.07	0.21	200.00	0.00	0.00	0.00
Nelson Mandela Bay	1.21	0.86	-29.41	0.21	0.36	66.67
O R Tambo	0.21	0.86	300.00	0.14	0.14	0.00
Sarah Baartman	0.07	0.07	0.00	0.00	0.00	0.00



## Free State

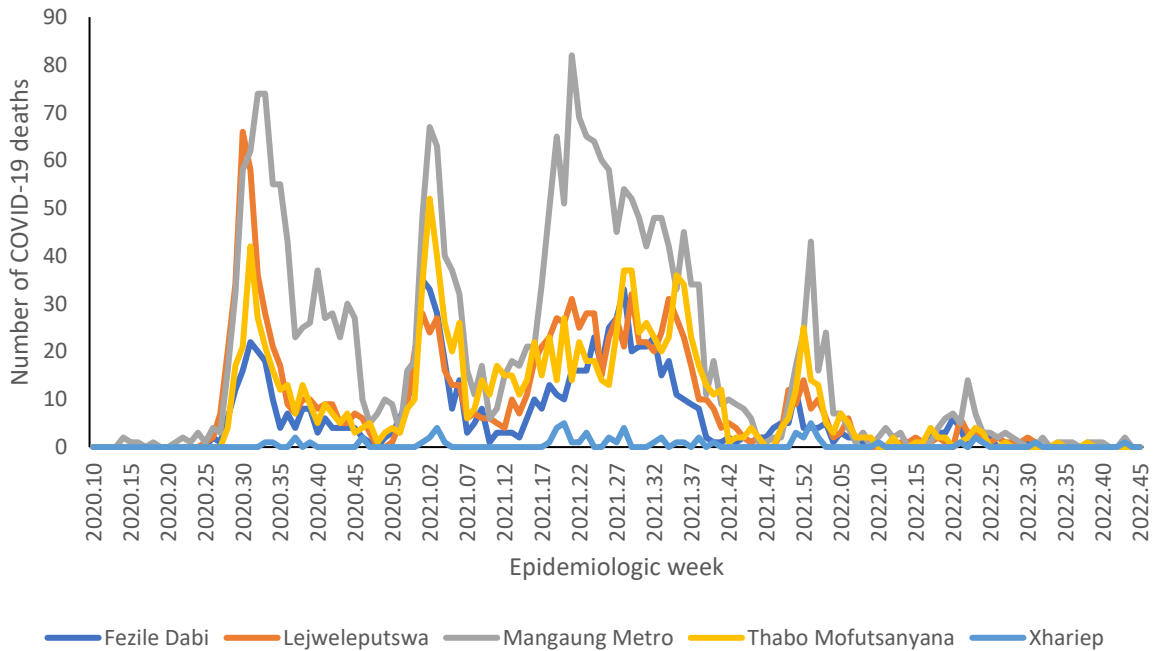


**Figure 12:** Number of reported COVID-19 admissions by health sector and epidemiologic week of diagnosis, Free State, 5 March 2020-12 November 2022, N=32,752

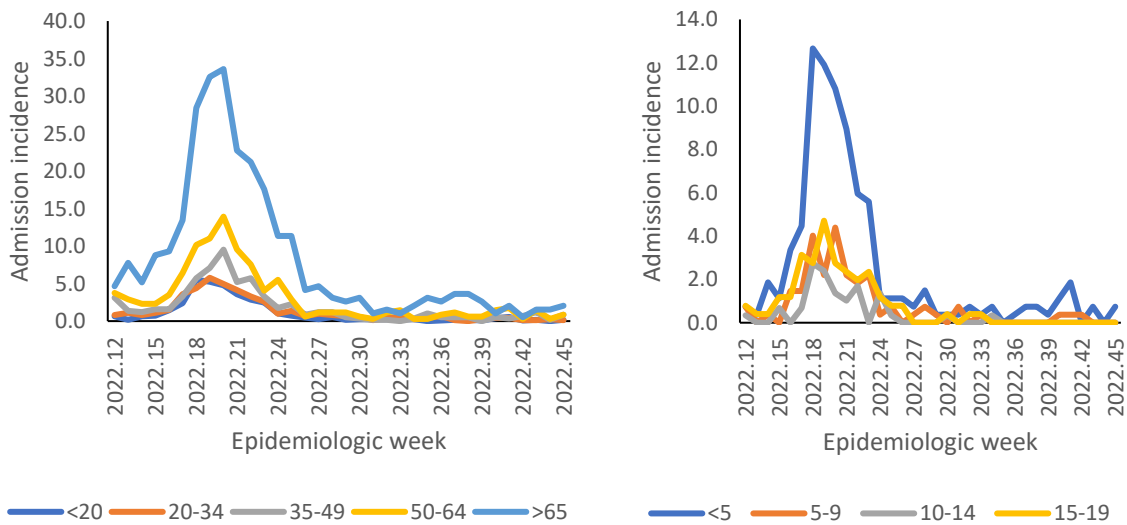


**Figure 13:** Number of reported COVID-19 admissions, by district and epidemiologic week, Free State, 5 March 2020-12 November 2022, N=32,752





**Figure 14:** Number of reported COVID-19 in-hospital deaths, by district and epidemiologic week, Free State, 5 March 2020-12 November 2022, N=6,161

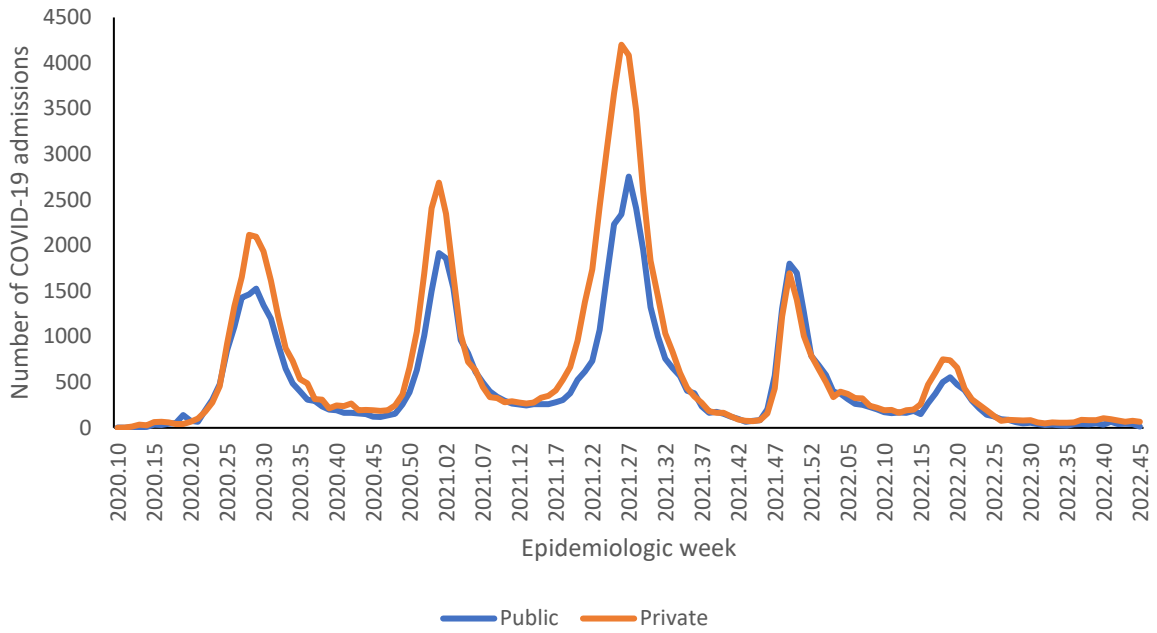


**Figure 15:** Incidence risk of COVID-19 admissions per 100,000 persons by age group and epidemiologic week of diagnosis, Free State, 19 March 2022- 12 November 2022

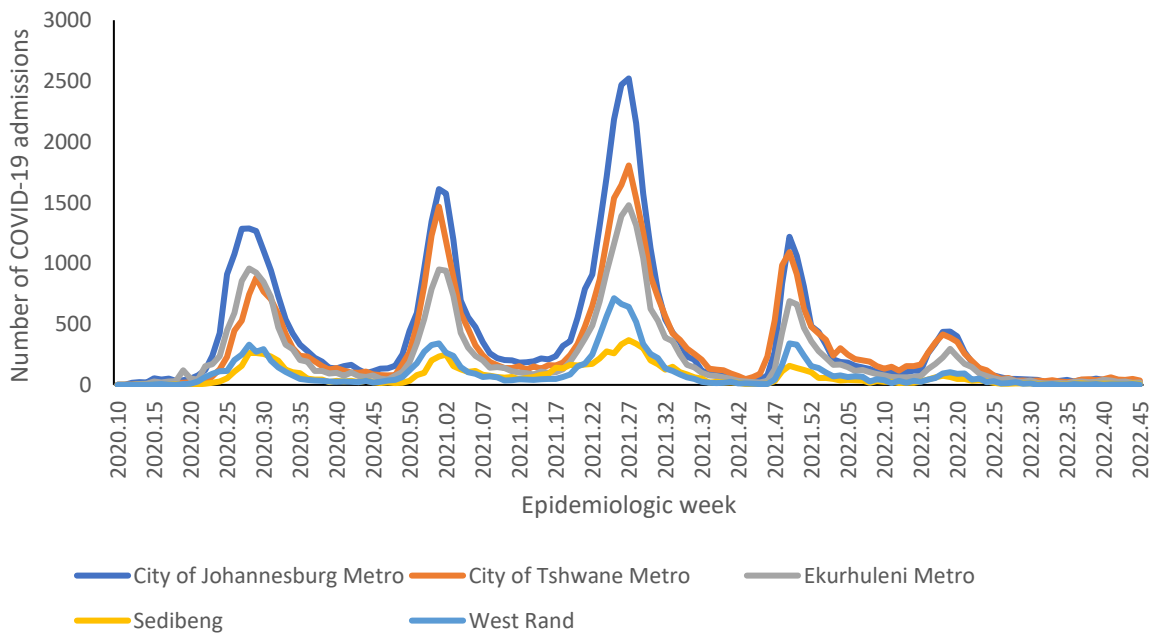
**Table 6:** Previous 14 days and current 14 days average COVID-19 admissions and deaths and percentage changes, Free State, 15 October-12 November 2022.

District	Previous 14 days admissions average	Current 14 days admissions average	Percentage change in admissions	Previous 14 days deaths average	Current 14 days deaths average	Percentage change in deaths
Fezile Dabi	0.29	0.14	-50.00	0.00	0.00	0.00
Lejweleputswa	0.29	0.14	-50.00	0.00	0.00	0.00
Mangaung Metro	0.79	1.07	36.36	0.14	0.00	-100.00
Thabo Mofutsanyana	0.36	0.21	-40.00	0.00	0.00	0.00
Xhariep	0.14	0.00	-100.00	0.07	0.00	-100.00

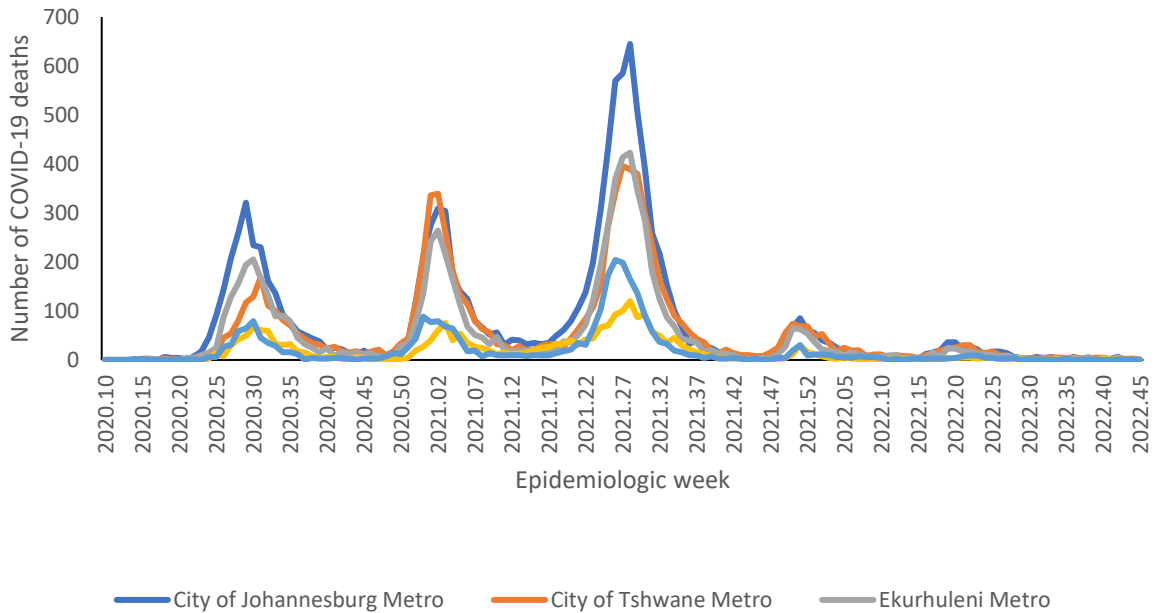
## Gauteng



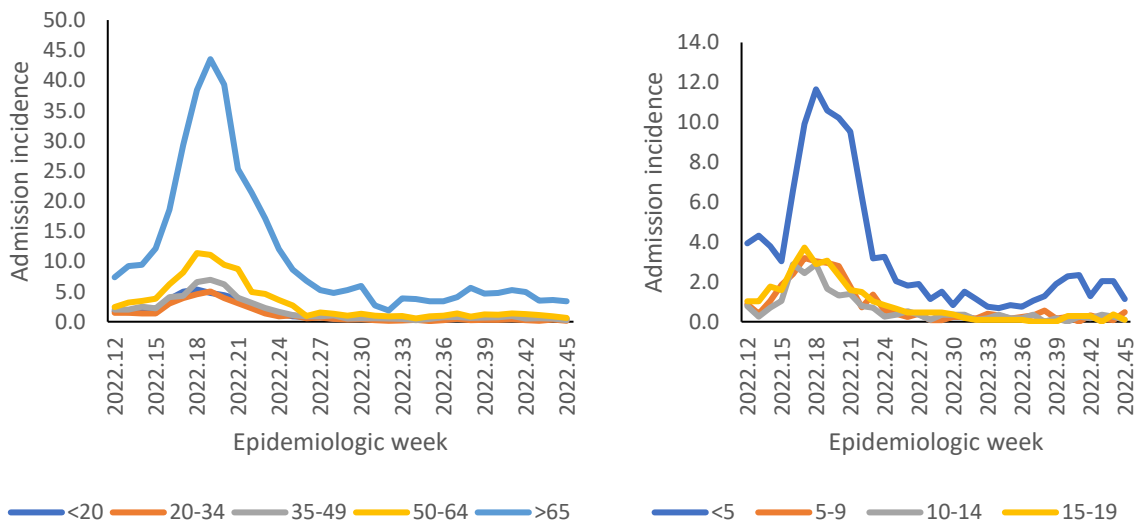
**Figure 16:** Number of reported COVID-19 admissions by health sector and epidemiologic week of diagnosis, Gauteng, 5 March 2020-12 November 2022, N=161,214



**Figure 17:** Number of reported COVID-19 admissions, by district and epidemiologic week, Gauteng, 5 March 2020-12 November 2022, N=161,214



**Figure 18:** Number of reported COVID-19 in-hospital deaths, by district and epidemiologic week, Gauteng, 5 March 2020-12 November 2022, N=30,705



**Figure 19:** Incidence risk of COVID-19 admissions per 100,000 persons, per age group and epidemiologic week of diagnosis, Gauteng, 19 March 2022- 12 November 2022

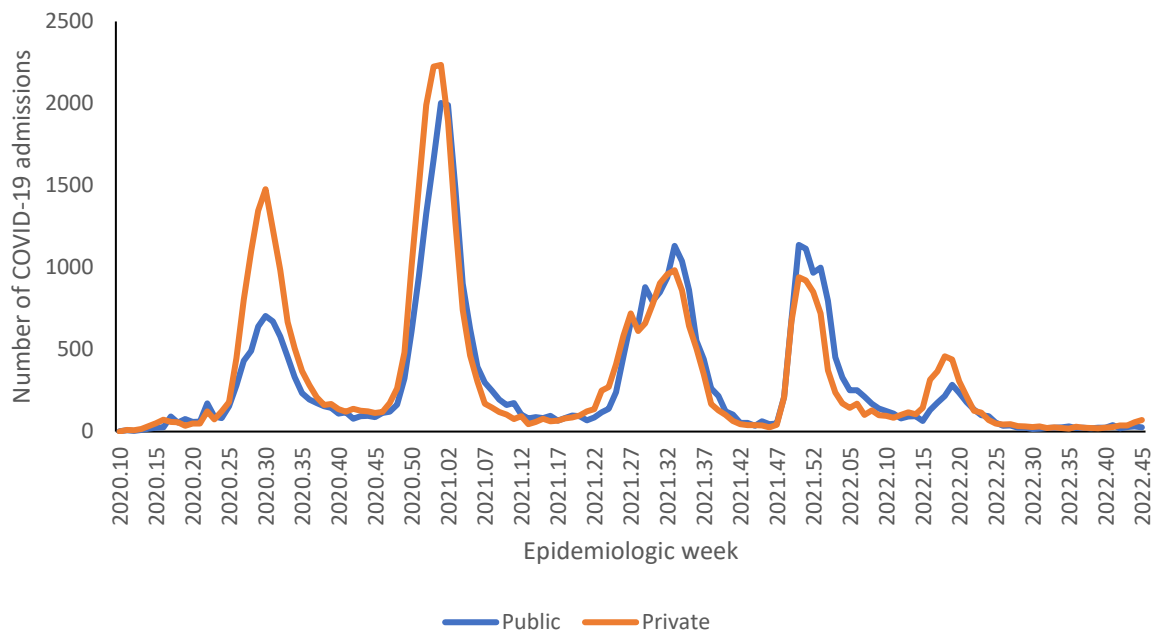


**Table 7:** Previous 14 days and current 14 days average COVID-19 admissions and deaths and percentage changes, Gauteng, 15 October-12 November 2022.

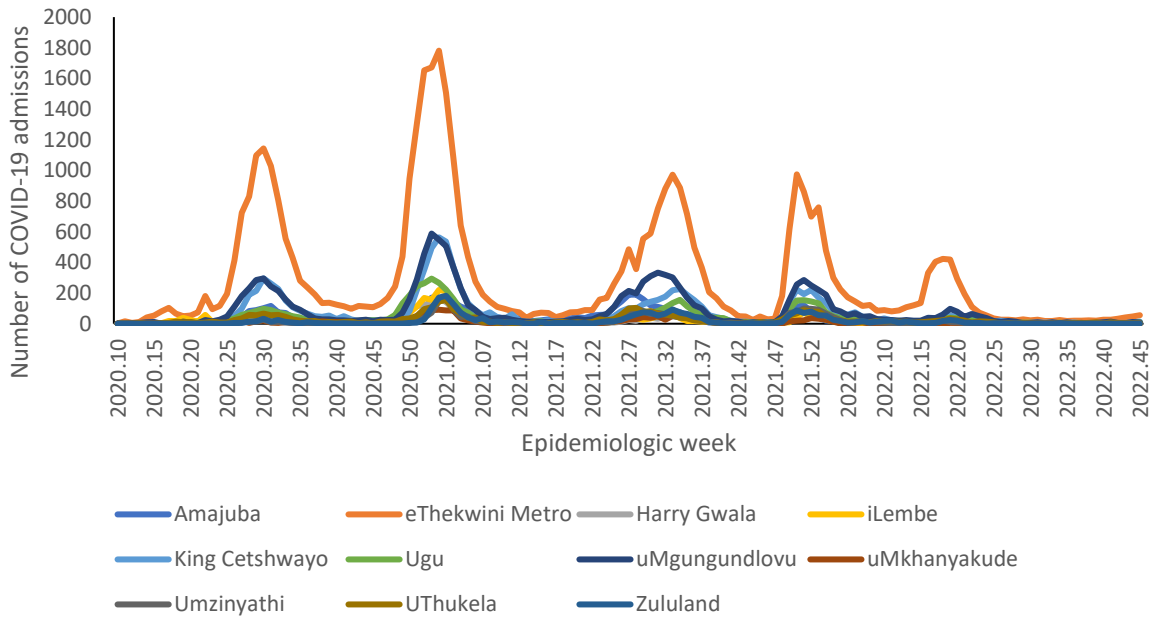
District	Previous 14 days admissions average	Current 14 days admissions average	Percentage change in admissions	Previous 14 days deaths average	Current 14 days deaths average	Percentage change in deaths
City of Johannesburg Metro	5.29	3.79	-28.38	0.50	0.07	-85.71
City of Tshwane Metro	6.07	5.93	-2.35	0.50	0.29	-42.86
Ekurhuleni Metro	3.71	2.57	-30.77	0.36	0.07	-80.00
Sedibeng	0.79	1.29	63.64	0.00	0.00	0.00
West Rand	0.64	0.50	-22.22	0.07	0.00	-100.00



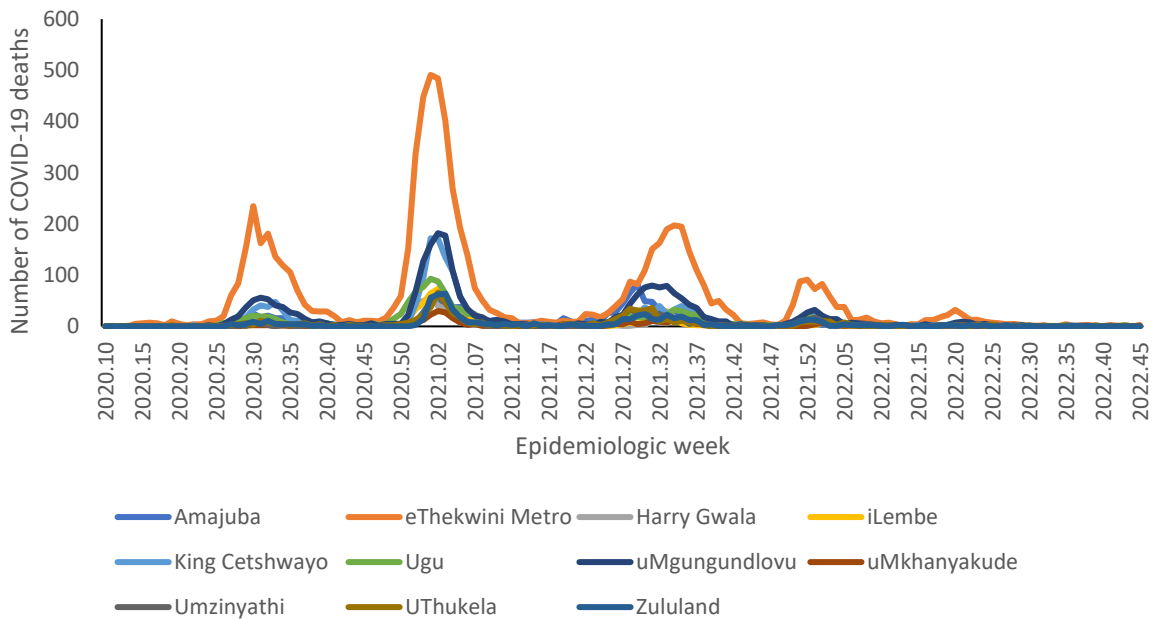
## KwaZulu-Natal



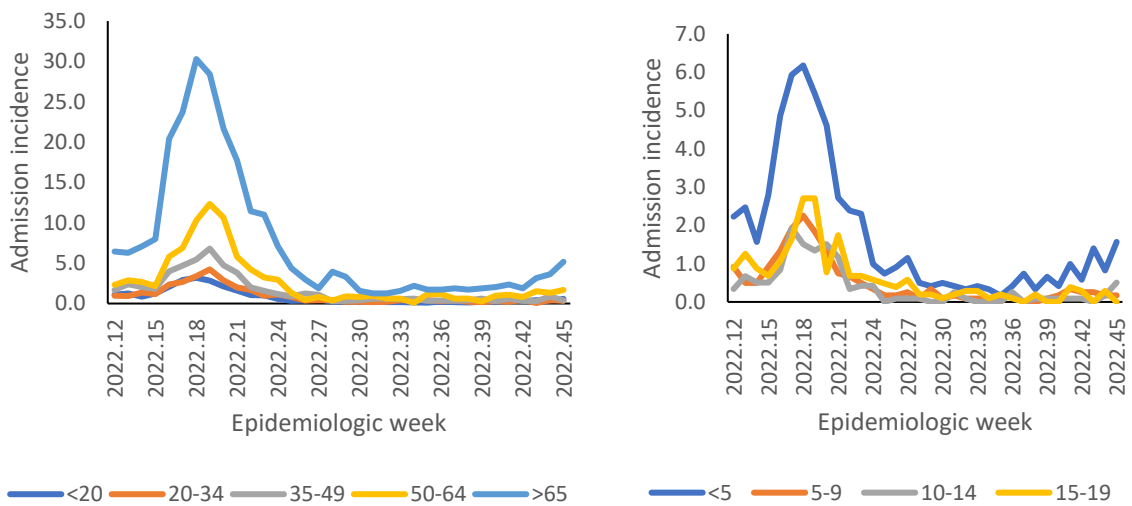
**Figure 20:** Number of reported COVID-19 admissions by health sector and epidemiologic week of diagnosis, KwaZulu-Natal, 5 March 2020-12 November 2022, N=89,869



**Figure 21:** Number of reported COVID-19 admissions, by district and epidemiologic week, KwaZulu-Natal, 5 March 2020-12 November 2022, N=89,869



**Figure 22:** Number of reported COVID-19 in-hospital deaths, by district and epidemiologic week, KwaZulu-Natal, 5 March 2020-12 November 2022, N=17,625



**Figure 23:** Incidence risk of COVID-19 admissions per 100,000 persons, by age group and epidemiologic week of diagnosis, KwaZulu-Natal, 19 March 2022- 12 November 2022



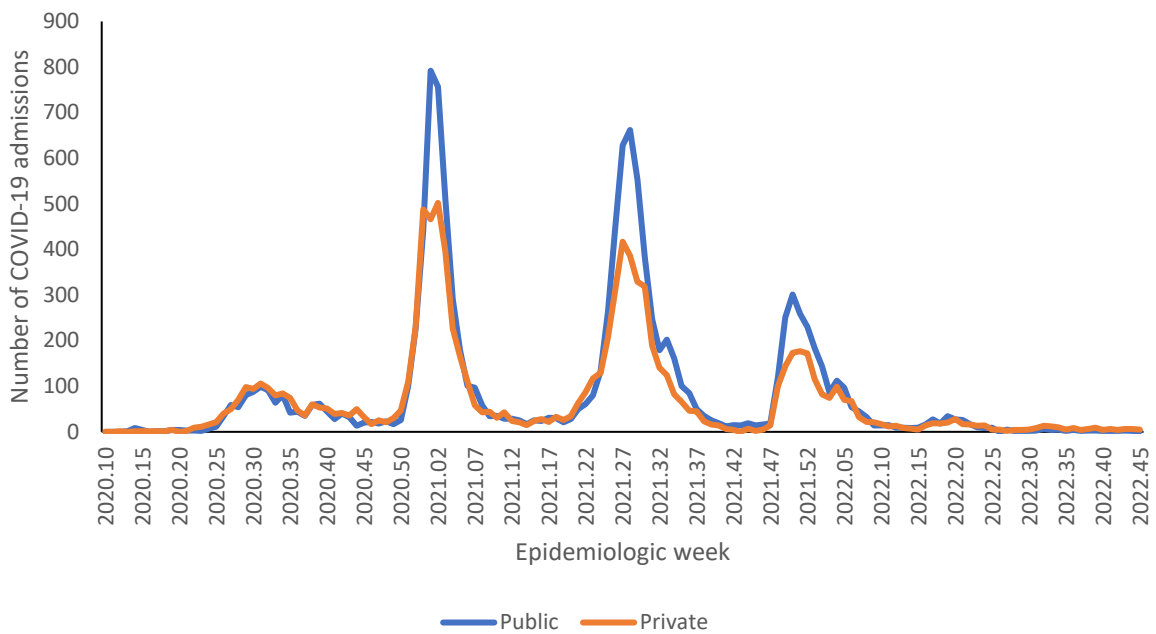


**Table 8:** Previous 14 days and current 14 days average COVID-19 admissions and deaths and percentage changes, KwaZulu-Natal, 15 October-12 November 2022.

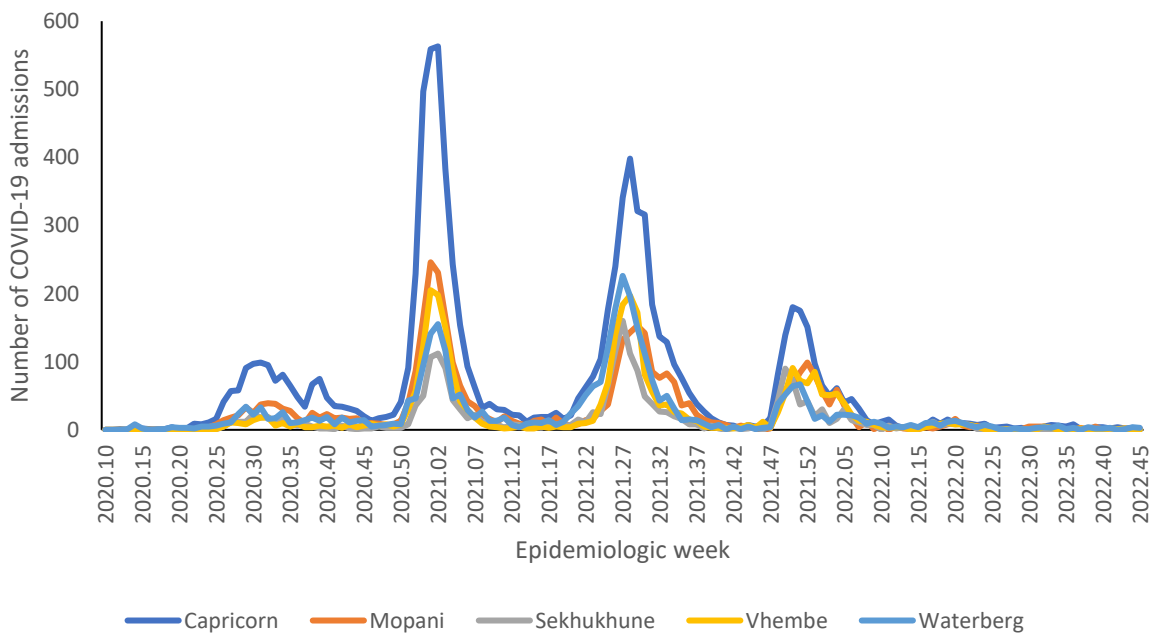
District	Previous 14 days admissions average	Current 14 days admissions average	Percentage change in admissions	Previous 14 days deaths average	Current 14 days deaths average	Percentage change in deaths
Amajuba	0.21	0.36	66.67	0.00	0.07	0.00
eThekweni Metro	5.21	7.21	38.36	0.21	0.21	0.00
Harry Gwala	0.43	0.29	-33.33	0.07	0.00	-100.00
iLembe	0.14	0.36	150.00	0.00	0.00	0.00
King Cetshwayo	0.79	1.57	100.00	0.07	0.00	-100.00
Ugu	0.57	1.00	75.00	0.14	0.00	-100.00
uMgungundlovu	0.50	1.29	157.14	0.00	0.00	0.00
uMkhanyakude	0.07	0.29	300.00	0.00	0.07	0.00
Umzinyathi	0.14	0.36	150.00	0.00	0.07	0.00
UThukela	0.50	0.29	-42.86	0.07	0.00	-100.00
Zululand	0.00	0.14	0.00	0.00	0.00	0.00



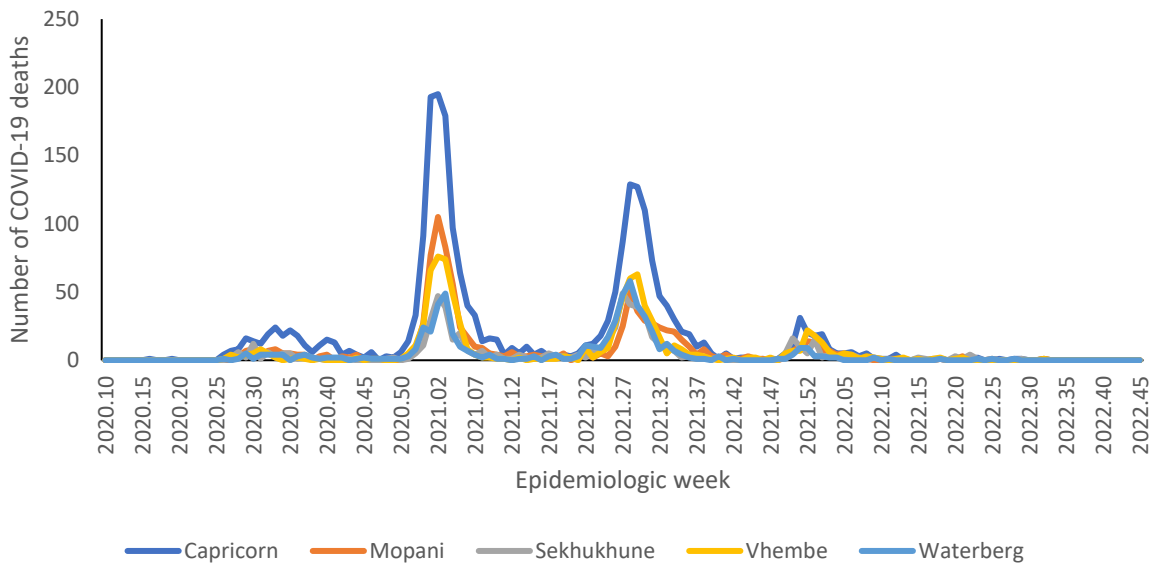
## Limpopo



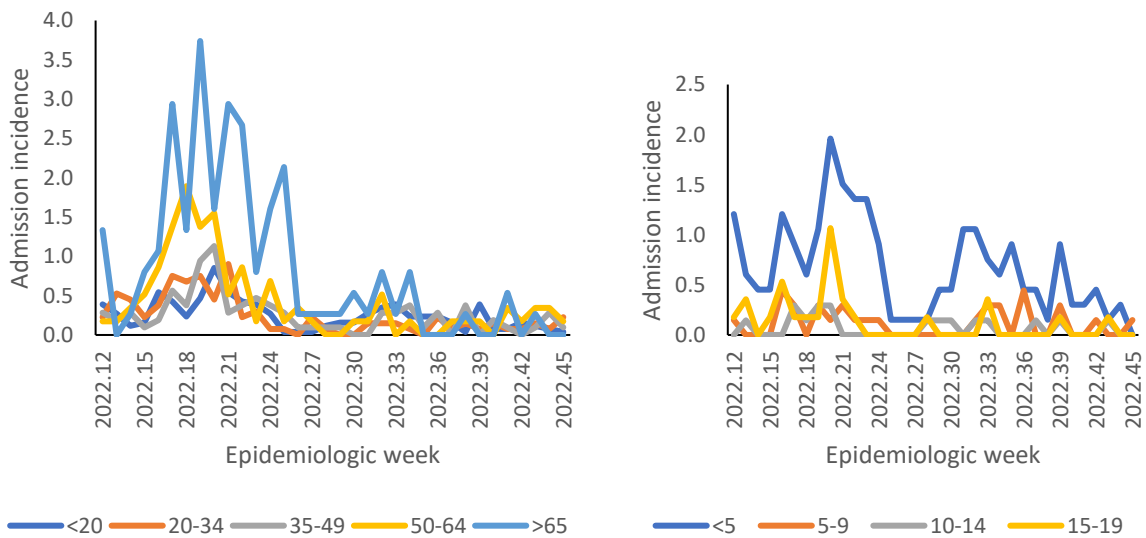
**Figure 24:** Number of reported COVID-19 admissions by health sector and epidemiologic week of diagnosis, Limpopo, 5 March 2020-12 November 2022, N=21,232



**Figure 25:** Number of reported COVID-19 admissions, by district and epidemiologic week, Limpopo, 5 March 2020-12 November 2022, N=21,232



**Figure 26:** Number of reported COVID-19 in-hospital deaths, by district and epidemiologic week, Limpopo, 5 March 2020-12 November 2022, N=5,332



**Figure 27:** Incidence risk of COVID-19 admissions per 100,000 persons, by age group and epidemiologic week of diagnosis, Limpopo, 19 March 2022-12 November 2022

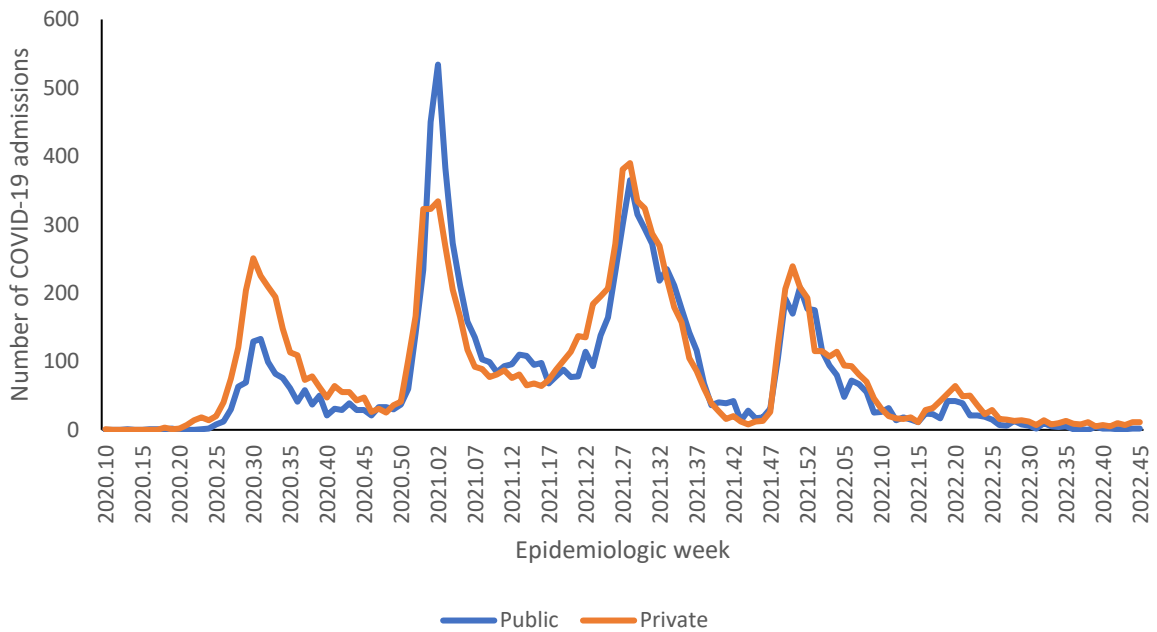


**Table 9:** Previous 14 days and current 14 days average COVID-19 admissions and deaths and percentage changes, Limpopo, 15 October-12 November 2022.

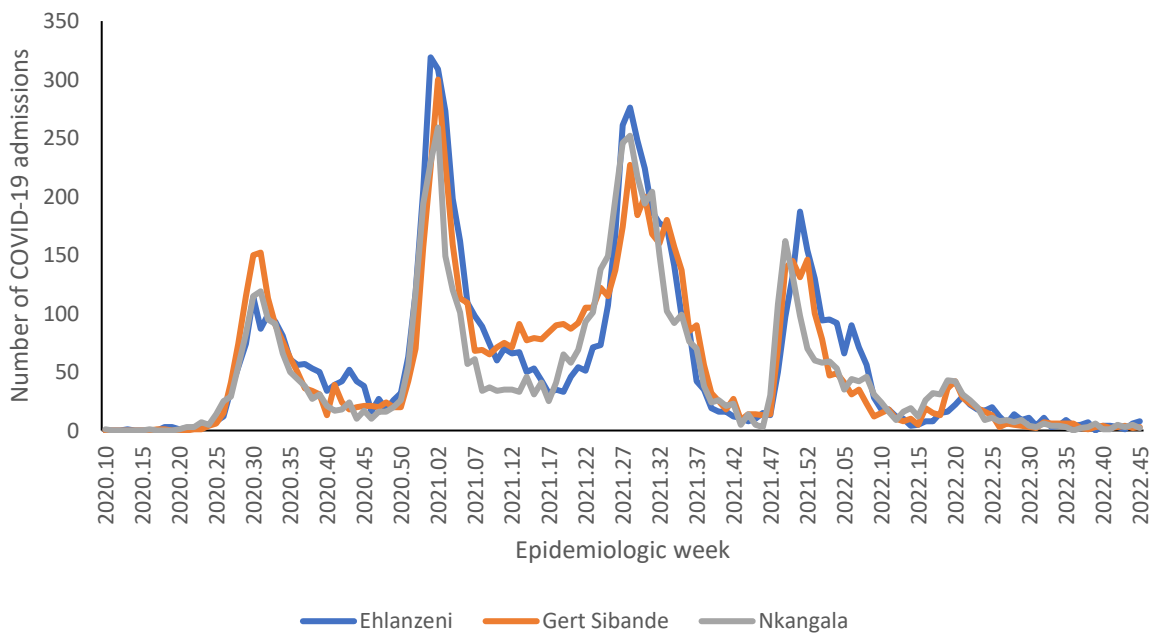
District	Previous 14 days admissions average	Current 14 days admissions average	Percentage change in admissions	Previous 14 days deaths average	Current 14 days deaths average	Percentage change in deaths
Capricorn	0.43	0.21	-50.00	0.00	0.00	0.00
Mopani	0.14	0.14	0.00	0.00	0.00	0.00
Sekhukhune	0.21	0.14	-33.33	0.00	0.00	0.00
Vhembe	0.21	0.00	-100.00	0.00	0.00	0.00
Waterberg	0.07	0.50	600.00	0.00	0.00	0.00



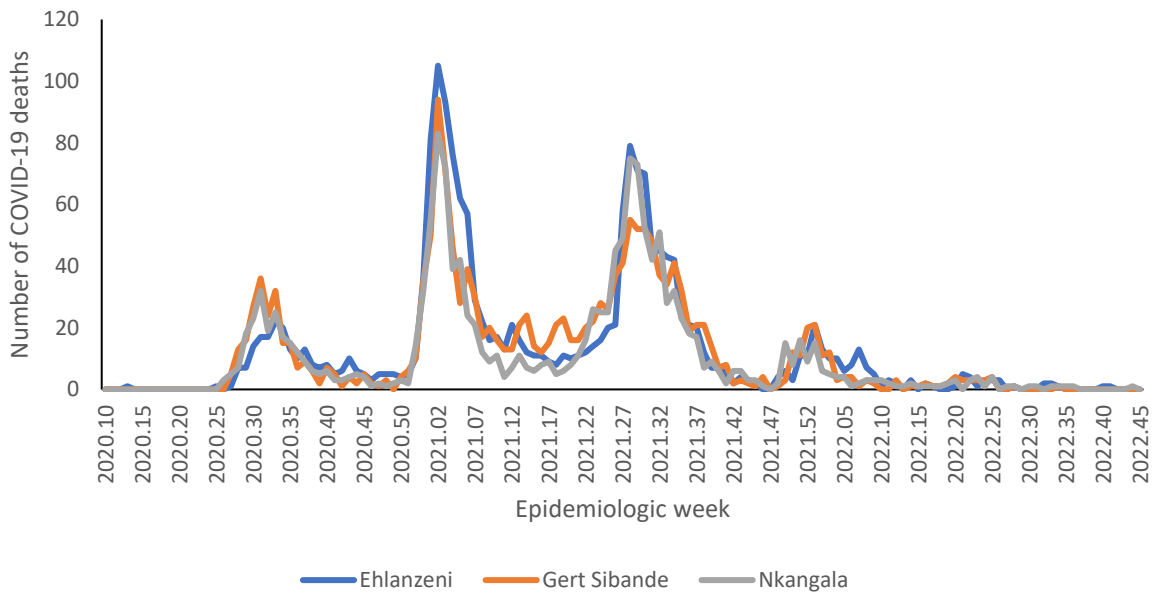
## Mpumalanga



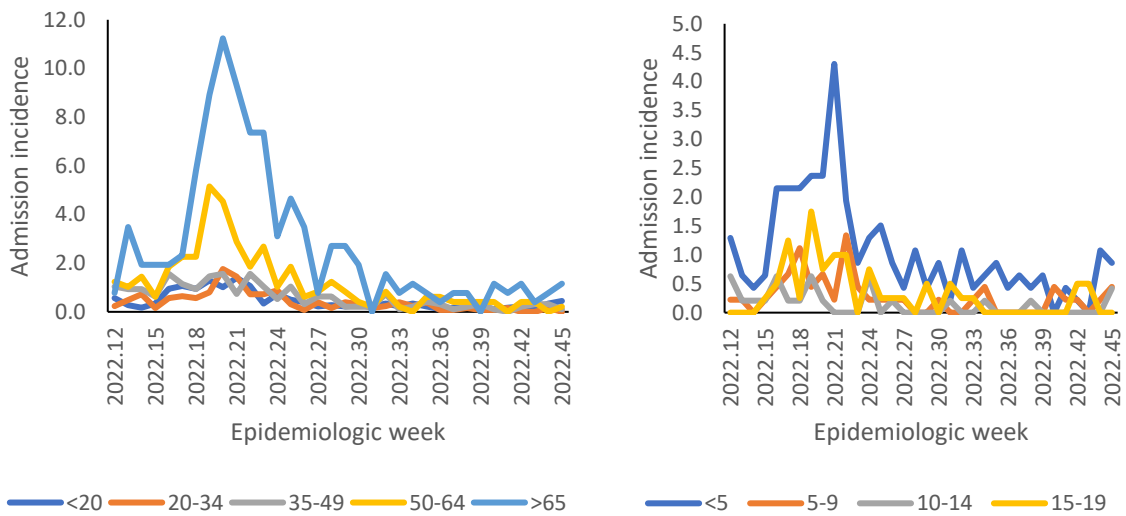
**Figure 28:** Number of reported COVID-19 admissions by health sector and epidemiologic week of diagnosis, Mpumalanga, 5 March 2020-12 November 2022, N=23,110



**Figure 29:** Number of reported COVID-19 admissions, by district and epidemiologic week, Mpumalanga, 5 March 2020-12 November 2022, N=23,110



**Figure 30:** Number of reported COVID-19 in-hospital deaths, by district and epidemiologic week, Mpumalanga, 5 March 2020-12 November 2022, N=4,931



**Figure 31:** Incidence risk of COVID-19 admissions per 100,000 persons, by age group and epidemiologic week of diagnosis, Mpumalanga, 19 March 2022-12 November 2022

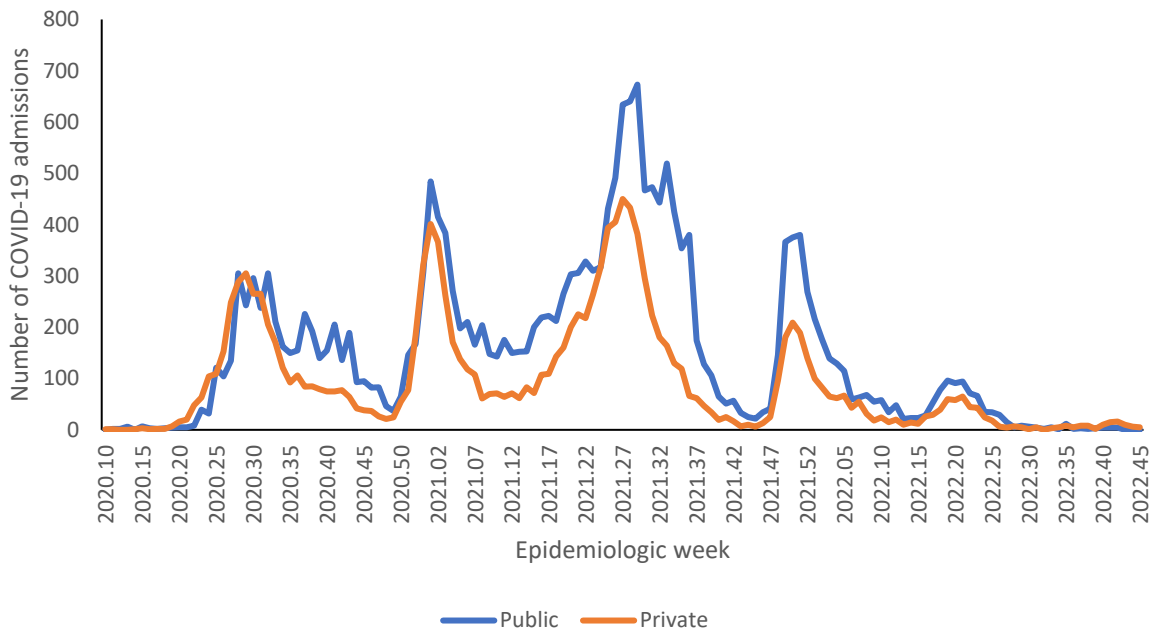


**Table 10:** Previous 14 days and current 14 days average COVID-19 admissions and deaths and percentage changes, Mpumalanga, 15 October-12 November 2022.

District	Previous 14 days admissions average	Current 14 days admissions average	Percentage change in admissions	Previous 14 days deaths average	Current 14 days deaths average	Percentage change in deaths
Ehlanzeni	0.29	1.00	250.00	0.00	0.00	0.00
Gert Sibande	0.50	0.36	-28.57	0.00	0.00	0.00
Nkangala	0.57	0.50	-12.50	0.00	0.07	0.00

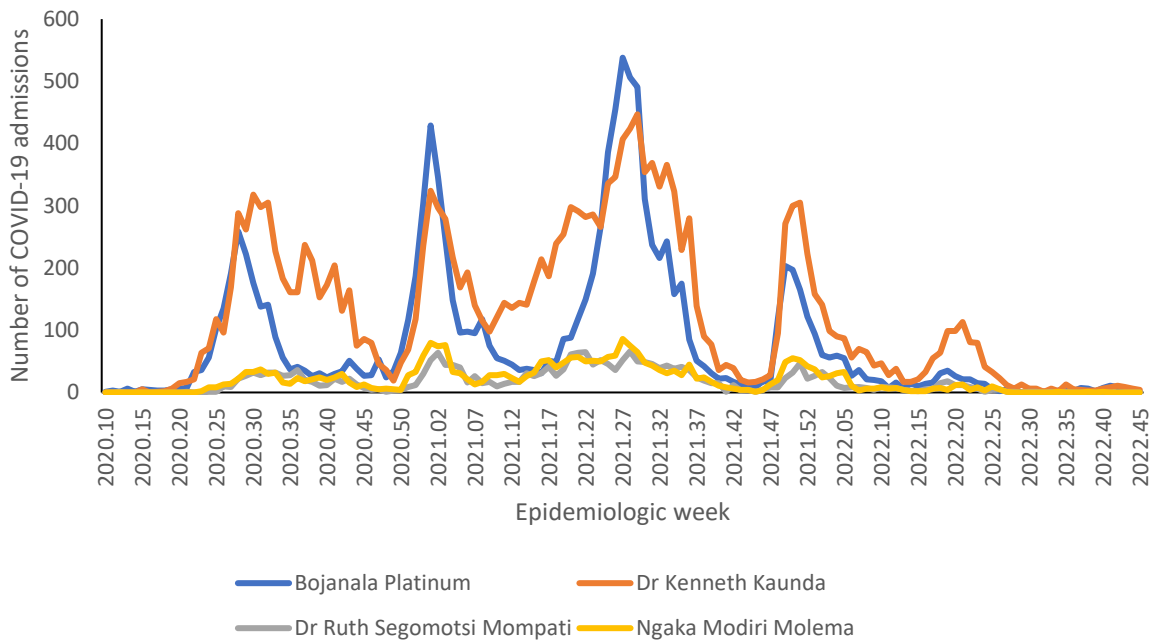


## North West

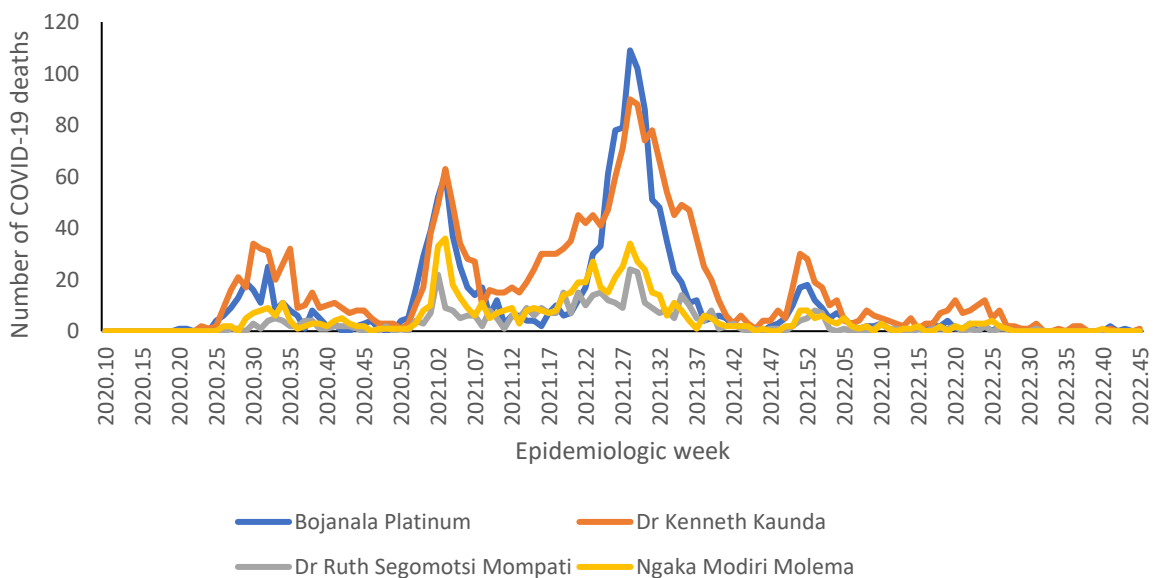


**Figure 32:** Number of reported COVID-19 admissions by health sector and epidemiologic week of diagnosis, North West, 5 March 2020-12 November 2022, N=34,287

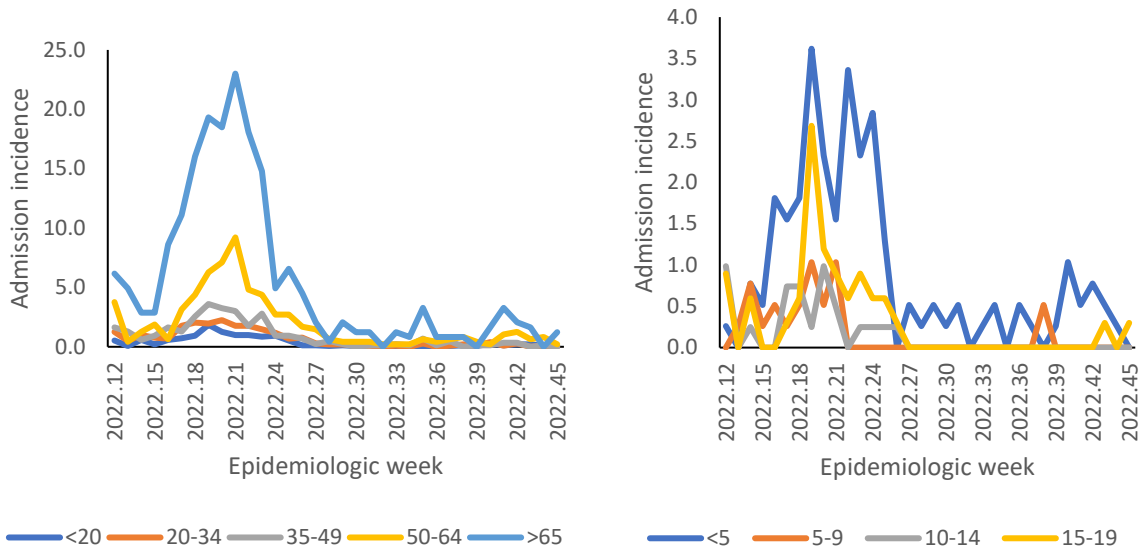




**Figure 33:** Number of reported COVID-19 admissions, by district and epidemiologic week, North West, 5 March 2020-12 November 2022, N=34,287



**Figure 34:** Number of reported COVID-19 in-hospital deaths, by district and epidemiologic week, North West, 5 March 2020-12 November 2022, N=5,018



**Figure 35:** Incidence risk of COVID-19 admissions per 100,000 persons, by age group and epidemiologic week of diagnosis, North West, 19 March 2022-12 November 2022

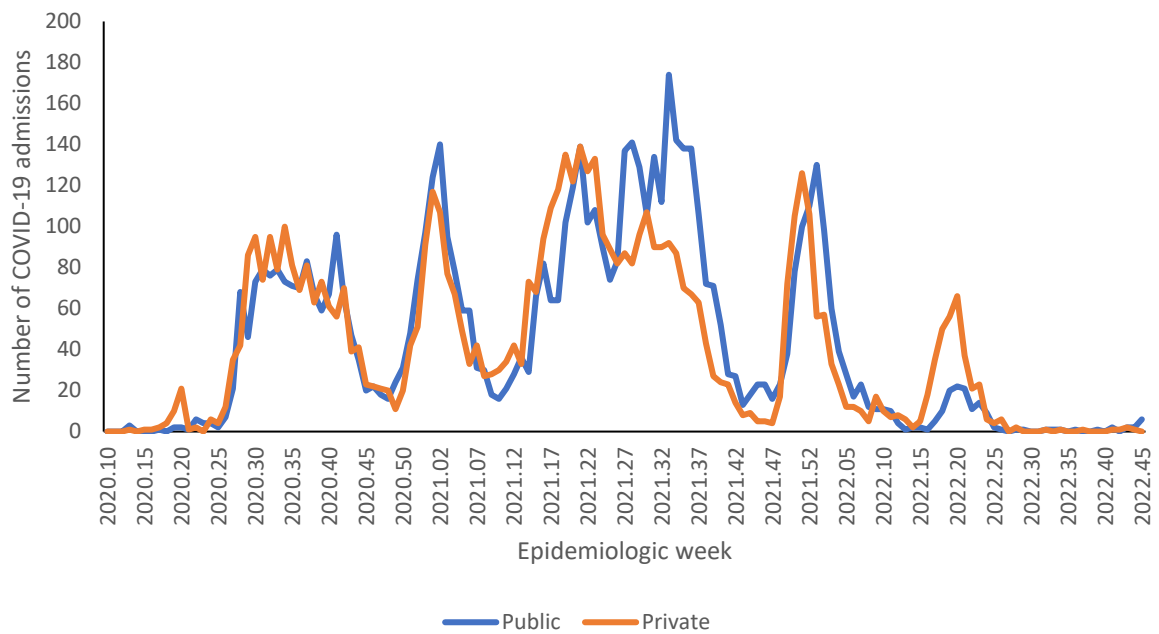


**Table 11:** Previous 14 days and current 14 days average COVID-19 admissions and deaths and percentage changes, North West, 15 October-12 November 2022.

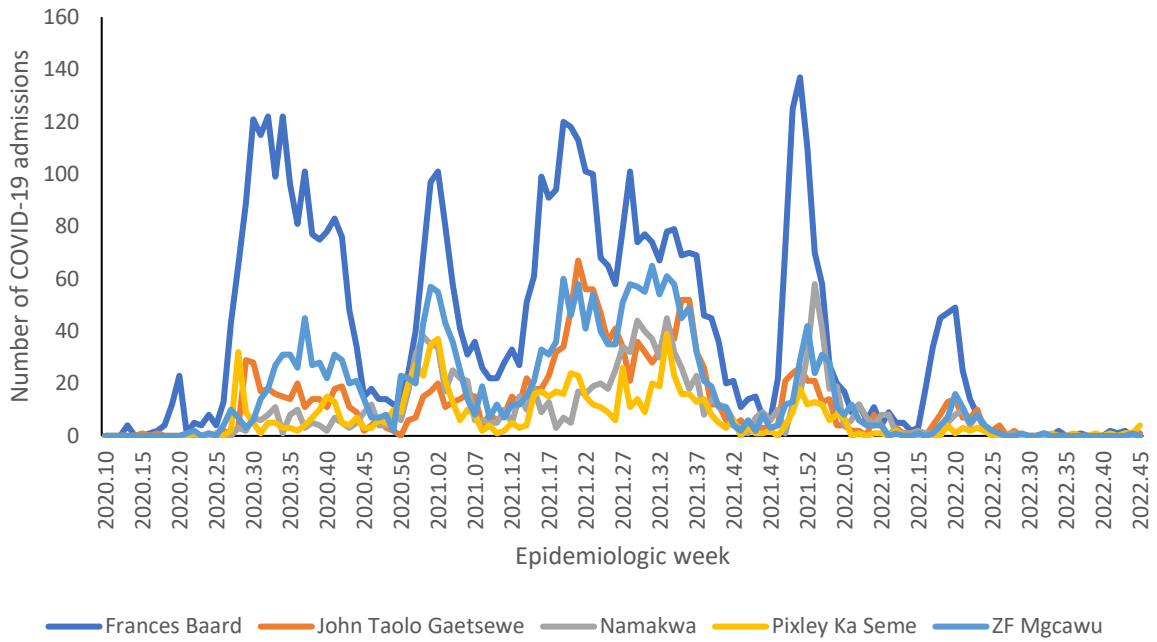
District	Previous 14 days admissions average	Current 14 days admissions average	Percentage change in admissions	Previous 14 days deaths average	Current 14 days deaths average	Percentage change in deaths
Bojanala Platinum	0.71	0.14	-80.00	0.07	0.00	-100.00
Dr Kenneth Kaunda	1.43	0.71	-50.00	0.00	0.07	0.00
Dr Ruth Segomotsi Mompati	0.00	0.00	0.00	0.00	0.00	0.00
Ngaka Modiri Molema	0.00	0.00	0.00	0.00	0.00	0.00



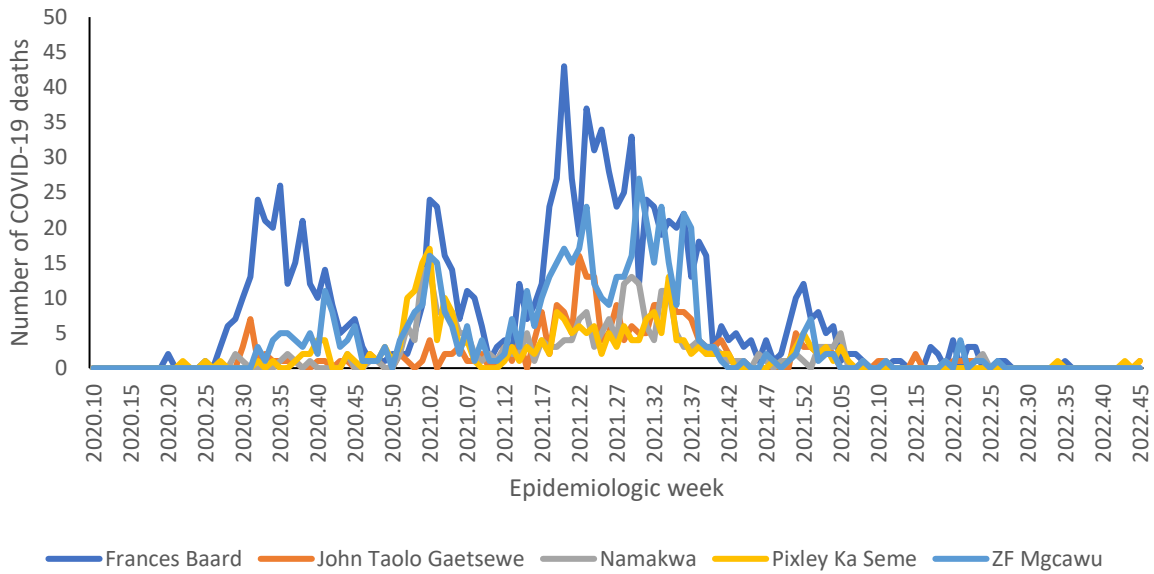
## Northern Cape



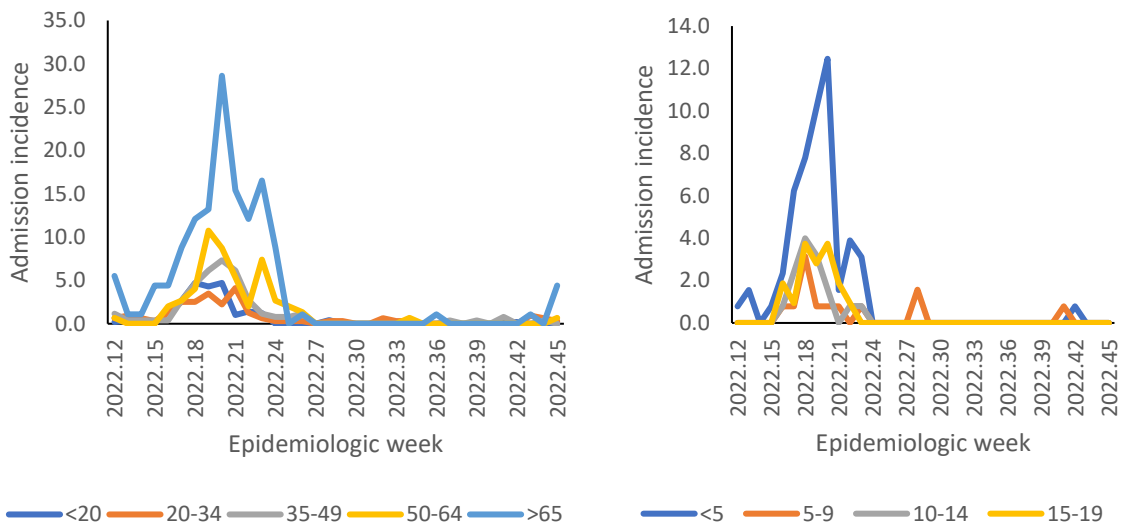
**Figure 36:** Number of reported COVID-19 admissions by health sector and epidemiologic week of diagnosis, Northern Cape, 5 March 2020-12 November 2022, N=11,927



**Figure 37:** Number of reported COVID-19 admissions by district and epidemiologic week, Northern Cape, 5 March 2020-12 November 2022, N=11,927



**Figure 38:** Number of reported COVID-19 in-hospital deaths, by district and epidemiologic week, Northern Cape, 5 March 2020-12 November 2022, N=2,461

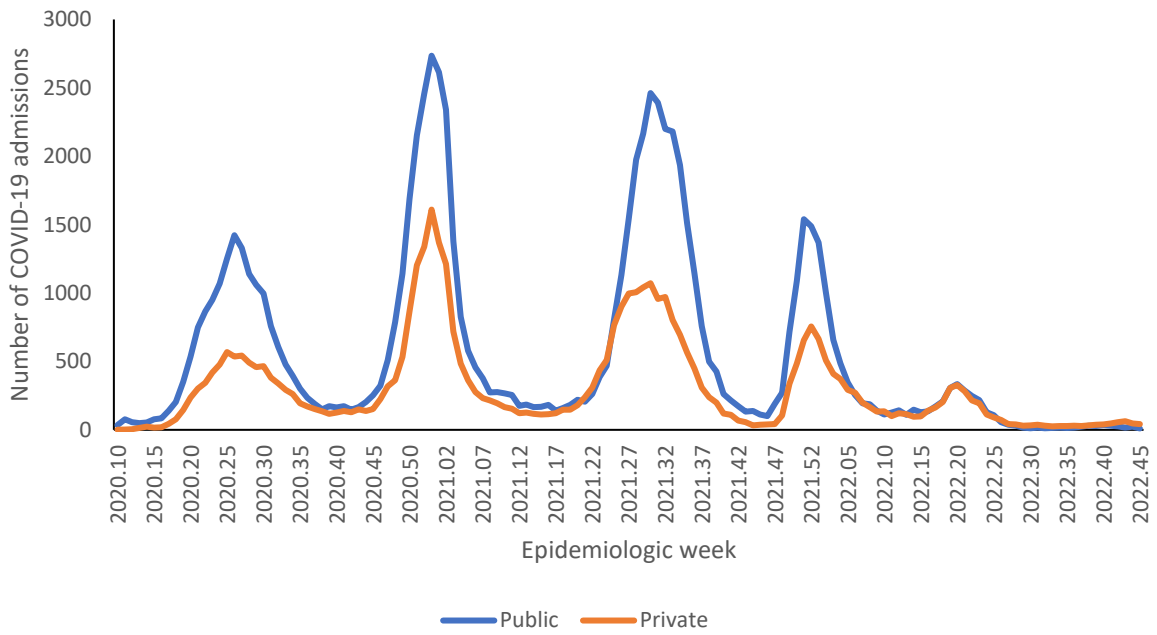


**Figure 39:** Incidence risk of COVID-19 admissions per 100,000 persons, by age group and epidemiologic week of diagnosis, Northern Cape, 19 March 2022- 12 November 2022

**Table 12:** Previous 14 days and current 14 days average COVID-19 admissions and deaths and percentage changes, Northern Cape, 15 October-12 November 2022.

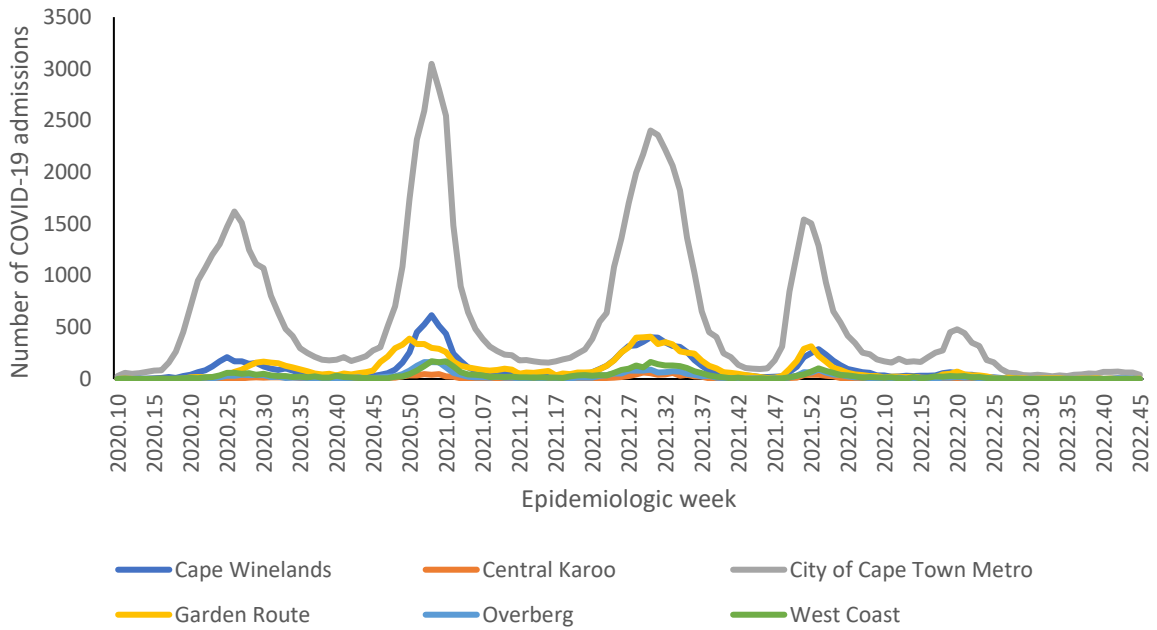
District	Previous 14 days admissions average	Current 14 days admissions average	Percentage change in admissions	Previous 14 days deaths average	Current 14 days deaths average	Percentage change in deaths
Frances Baard	0.21	0.07	-66.67	0.00	0.00	0.00
John Taolo Gaetsewe	0.07	0.14	100.00	0.00	0.07	0.00
Namakwa	0.00	0.00	0.00	0.00	0.00	0.00
Pixley Ka Seme	0.07	0.36	400.00	0.07	0.07	0.00
ZF Mgcawu	0.00	0.07	0.00	0.00	0.00	0.00

## Western Cape

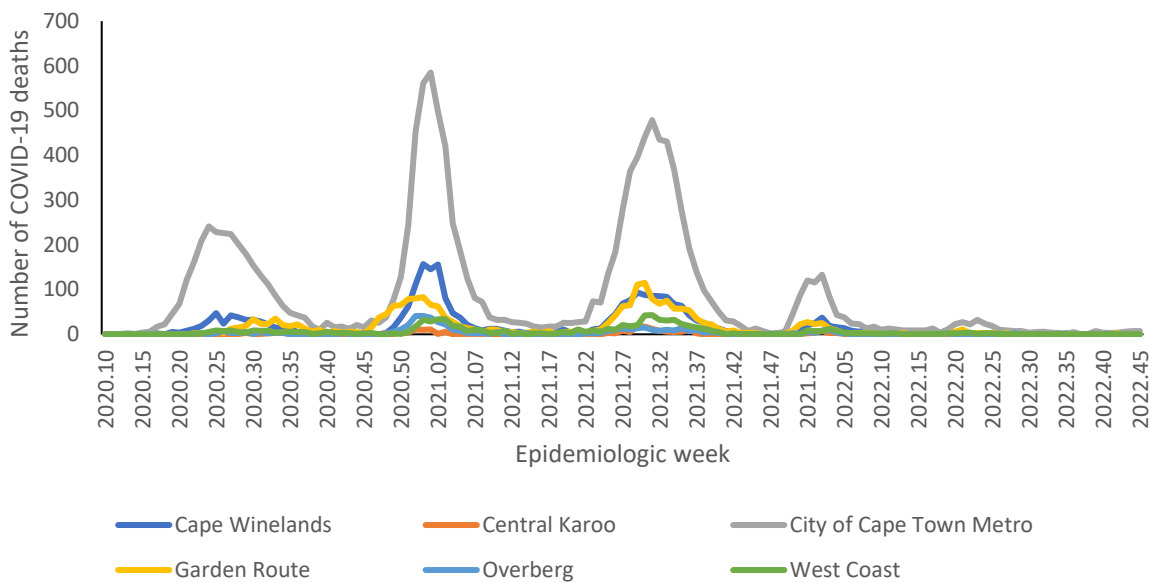


**Figure 40:** Number of reported COVID-19 admissions by health sector and epidemiologic week of diagnosis, Western Cape, 5 March 2020-12 November 2022, N=121,539

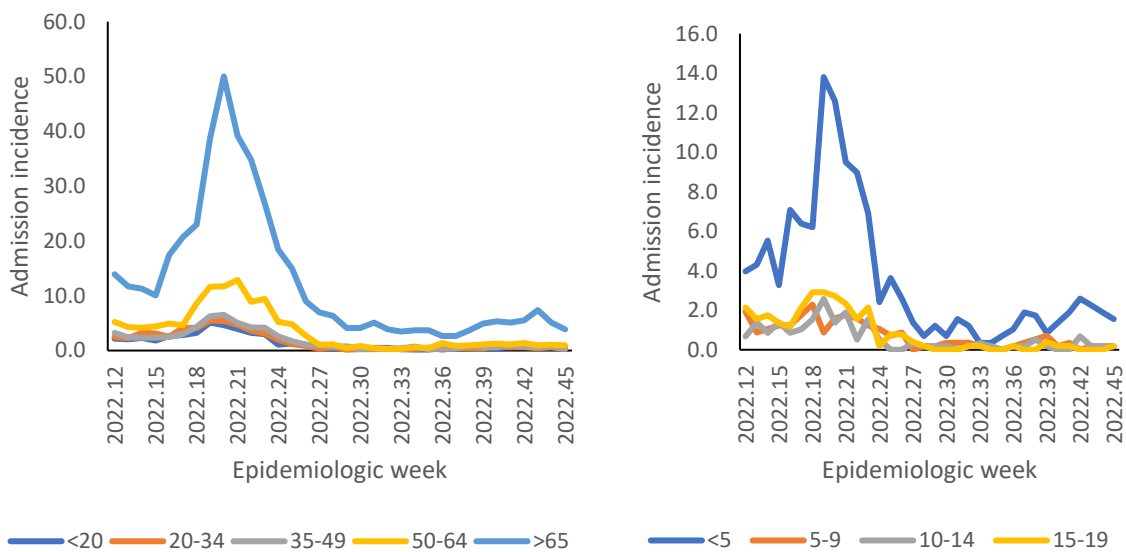




**Figure 41:** Number of reported COVID-19 admissions, by district and epidemiologic week, Western Cape, 5 March 2020-12 November 2022, N=121,539



**Figure 42:** Number of reported COVID-19 in-hospital deaths, by district and epidemiologic week, Western Cape, 5 March 2020-12 November 2022, N=18,943



**Figure 43:** Incidence risk of COVID-19 admissions per 100,000 persons, by age group and epidemiological week of diagnosis, Western Cape, 19 March 2022- 12 November 2022

**Table 13:** Previous 14 days and current 14 days average COVID-19 admissions and deaths and percentage changes, Western Cape, 15 October-12 November 2022.

District	Previous 14 days admissions average	Current 14 days admissions average	Percentage change in admissions	Previous 14 days deaths average	Current 14 days deaths average	Percentage change in deaths
Cape Winelands	0.64	0.64	0.00	0.00	0.07	0.00
Central Karoo	0.00	0.00	0.00	0.00	0.00	0.00
City of Cape Town Metro	9.64	7.21	-25.19	0.71	1.00	40.00
Garden Route	0.29	0.36	25.00	0.14	0.07	-50.00
Overberg	0.71	0.29	-60.00	0.00	0.00	0.00
West Coast	0.00	0.14	0.00	0.07	0.00	-100.00

## Limitation

DATCOV now includes reporting from all hospitals with COVID-19 admissions, but many hospitals are yet to reach complete submission of historic data. Data quality in a surveillance system is dependent on the information submitted by healthcare institutions. It is not possible for the NICD to verify or check the quality of all these data, however, the NICD has built-in data quality checks. Delays in reporting of admissions and deaths may affect the numbers reported in the most recent week. The National Department of Health have recruited data capturers to support hospitals to improve data submission.

As hospitals reached capacity, admission criteria may change and therefore influence trends and inferences about the progression of the epidemic. DATCOV only reports hospital-based admissions and deaths and therefore does not include deaths occurring outside hospitals. DATCOV now has a module to record out-of-hospital deaths.

Severity data has some inherent limitations. We rely on a proxy indicator for severity and do not have clinical or laboratory parameters to ascertain clinical severity. In the early and late phases of the wave there is likely to be lower severity due to there being sufficient hospital capacity. It may take a few weeks for hospitalisation outcomes to accumulate. Early reporting on case fatality ratio is also biased particularly in older adults who may have longer admissions and are more likely to die.

## Acknowledgements

All public and private sector hospitals submitting data to DATCOV

Private hospital groups submitting data to DATCOV:

- Netcare
- Life Healthcare
- Mediclinic Southern Africa
- National Hospital Network (NHN)
- Clinix Health Group
- Lenmed
- Joint Medical Holdings (JMH)

## Appendix

**Table 14:** Percentage incidence change in hospital admissions over 14 days, by district, South Africa, 29 October 2022-12 November 2022.

Province	District	Total admissions	Incidence (per 100k)	New admissions	New admissions incidence (per 100k)	% Average change (14 days)
Eastern Cape	Alfred Nzo	2775	336.56	1	0.12	-66.67
	Amathole	3320	424.25	1	0.13	100.00
	Buffalo City Metro	10700	1351.88	1	0.13	-50.00
	Chris Hani	5354	751.37	0	0.00	100.00
	Joe Gqabi	1223	356.65	3	0.87	100.00
	Nelson Mandela Bay Metro	17041	1412.55	2	0.17	-80.00
	O R Tambo	5067	330.40	2	0.13	-80.00
	Sarah Baartman	3426	709.95	1	0.21	100.00
Free State	Fezile Dabi	3858	754.18	1	0.20	0.00
	Lejweleputswa	6774	1037.08	2	0.31	100.00
	Mangaung Metro	15510	1769.78	10	1.14	66.67
	Thabo Mofutsanyana	5871	768.17	3	0.39	200.00
	Xhariep	741	583.27	0	0.00	100.00
Gauteng	City of Johannesburg Metro	57147	950.36	26	0.43	-25.71
	City of Tshwane Metro	45068	1179.68	37	0.97	-30.19
	Ekurhuleni Metro	34718	858.00	19	0.47	11.76
	Sedibeng	10310	1058.51	7	0.72	-46.15
	West Rand	13972	1460.88	1	0.10	-85.71
KwaZulu-Natal	Amajuba	4753	838.26	3	0.53	50.00
	eThekweni Metro	41443	1033.60	59	1.47	20.41
	Harry Gwala	2834	559.93	3	0.59	200.00
	iLembe	3084	443.28	2	0.29	-33.33
	King Cetshwayo	9855	1032.88	14	1.47	55.56
	Ugu	5983	743.74	9	1.12	80.00
	uMgungundlovu	12029	1055.26	8	0.70	-27.27
	uMkhanyakude	1528	222.10	0	0.00	-100.00
	Umzinyathi	2431	430.96	4	0.71	300.00
	UThukela	3378	482.31	2	0.29	-33.33
Limpopo	Zululand	2552	288.63	0	0.00	-100.00
	Capricorn	8768	660.77	0	0.00	-100.00
	Mopani	3834	318.79	2	0.17	100.00
	Sekhukhune	2152	176.88	1	0.08	0.00
	Vhembe	3093	216.24	0	0.00	100.00



	Waterberg	3385	451.24	3	0.40	-25.00
Mpumalanga	Ehlanzeni	8197	448.32	8	0.44	33.33
	Gert Sibande	7868	620.57	3	0.24	50.00
	Nkangala	7045	427.66	3	0.18	-40.00
North West	Bojanala Platinum	11438	587.11	1	0.05	0.00
	Dr Kenneth Kaunda	17643	2196.31	4	0.50	-42.86
	Dr Ruth Segomotsi Mompoti	2392	512.73	0	0.00	100.00
	Ngaka Modiri Molema	2814	310.99	0	0.00	100.00
Northern Cape	Frances Baard	5604	1347.21	1	0.24	100.00
	John Taolo Gaetsewe	1703	616.23	1	0.36	0.00
	Namakwa	1350	1153.93	0	0.00	100.00
	Pixley Ka Seme	940	446.74	4	1.90	300.00
	ZF Mgcawu	2330	822.41	0	0.00	-100.00
Western Cape	Cape Winelands	13648	1427.89	5	0.52	0.00
	Central Karoo	1404	1852.44	0	0.00	100.00
	City of Cape Town Metro	85166	1820.21	43	0.92	-41.89
	Garden Route	13387	2130.86	4	0.64	300.00
	Overberg	3348	1095.80	1	0.33	-66.67
	West Coast	4590	977.64	1	0.21	0.00

**Table 15:** Number of reported COVID-19 admissions and in-hospital deaths by age and gender, South Africa, 5 March 2020-12 November 2022.

Age Group (Years)	ADMISSIONS				DEATHS			
	Female	Male	Unknown	Total	Female	Male	Unknown	Total
0-4	7680	9756	55	17491	186	214	4	404
5-9	2116	2809	8	4933	31	39	0	70
10-14	2763	2874	12	5649	70	71	1	142
15-19	7392	4174	6	11572	164	140	0	304
20-24	11419	5781	10	17210	367	282	1	650
25-29	18026	8162	11	26199	783	536	0	1319
30-34	23091	12848	15	35954	1322	1135	2	2459
35-39	23588	16783	22	40393	1880	1783	4	3667
40-44	20794	18468	17	39279	2296	2377	0	4673
45-49	22890	22385	12	45287	3237	3459	1	6697
50-54	26373	24720	10	51103	4408	4586	2	8996
55-59	29262	26733	16	56011	6214	6258	5	12477
60-64	26177	23920	16	50113	6699	6913	6	13618
65-69	22630	20215	19	42864	6954	6521	6	13481
70-74	19476	17215	19	36710	6194	6059	4	12257
75-79	14883	12335	9	27227	4950	4643	3	9596
80-84	11437	8190	8	19635	4066	3194	3	7263
85-89	6326	3963	2	10291	2304	1689	0	3993
90-94	2785	1420	1	4206	1128	667	0	1795
>=95	845	397	3	1245	373	168	0	541
Unknown	802	616	46	1464	46	44	0	90
<b>Total</b>	<b>300755</b>	<b>243764</b>	<b>317</b>	<b>544836</b>	<b>53672</b>	<b>50778</b>	<b>42</b>	<b>104492</b>