

COVID-19 Hospital Surveillance

Update: Week 50, 2022

Overview of report

This report summarises data of COVID-19 cases admitted to hospital surveillance sites in all provinces. The report is based on data collected from 5 March 2020 to 17 December 2022.

Highlights

- There was a 45% decrease in the number of new admissions in week 50 2022 (147) compared to the number of admissions in week 49 2022 (269). Delays in reporting of admissions and deaths may affect the numbers reported in the most recent week.
- KwaZulu-Natal and Western Cape had the highest number of admissions in the past week (45/147, 30.61% and 39/147, 26.53%), followed by Gauteng (32/147, 21.77%). Limpopo had the lowest number of admissions (2/147, 1.36%).
- The highest weekly incidence risk of COVID-19 admissions reported in week 50 of 2022 was in the ≥65-year age group (1.5 admissions per 100 000 persons), and the lowest weekly incidence risk was in the <20 and 20-34-year age groups (0.1 admissions per 100 000 persons). The increased incidence risk of COVID-19 admissions observed in children <5 years since week 40 seems to have peaked in week 46.

Methods

Data on hospitalisation was accessed from DATCOV, a hospital surveillance system for COVID-19 admissions, initiated on the 1 April 2020. A COVID-19 case was defined as a person with a positive reverse transcriptase polymerase chain reaction (RT-PCR) assay for SARS-CoV-2 or a person who had a positive SARS-CoV-2 antigen test who was admitted to hospital.

Data on SARS-CoV-2 cases diagnosed in public and private laboratories submitted to the NICD were reported from the line list on the NMCSS.

Case fatality ratio (CFR) was calculated for all closed cases, i.e., COVID-19 deaths divided by COVID-19 deaths plus COVID-19 discharges, excluding individuals who are still admitted in hospital. For the calculation of cumulative incidence risks, StatsSA mid-year population estimates for 2021 were utilised. For comparisons of change in admission, we used 14-day daily average admissions in the current 14-day period compared to the previous 14-day period.

Severity was defined as patients receiving oxygen or invasive ventilation, treated in high care or intensive care wards, developing acute respiratory distress syndrome, or died. While oxygen, ventilation, and ward of stay variables are updated daily for all admissions in the private sector, there may be delays with the data being updated in the public sector. Also, as patients remain in hospital their condition may change, and percentage of severity may change over time.

Data are submitted by public and private hospitals that have agreed to report COVID-19 admissions through DATCOV surveillance in all nine provinces of South Africa. On 15 July 2020, the National Health Council decided that all hospitals should report to DATCOV. As of 17 December 2022, a total of 669 facilities submitted data on hospitalised COVID-19 cases, 406 from public sector and 263 from private sector (Table 1). This reflects 100% coverage of all public and private hospitals that have had COVID-19 admissions. As new hospitals join the surveillance system, they have retrospectively captured all admissions recorded although there may be some backlogs in retrospective data capture.

Table 1: Number of hospitals reporting data on COVID-19 admissions by province and sector, South Africa, 5 March 2020-17 December 2022.

Facilities reporting	Public	Private
Eastern Cape	86	18
Free State	34	20
Gauteng	39	99
KwaZulu-Natal	71	48
Limpopo	41	7
Mpumalanga	31	9
North West	17	13
Northern Cape	29	6
Western Cape	59	43
South Africa	406	263

Results

Epidemiological and demographic trends in admissions

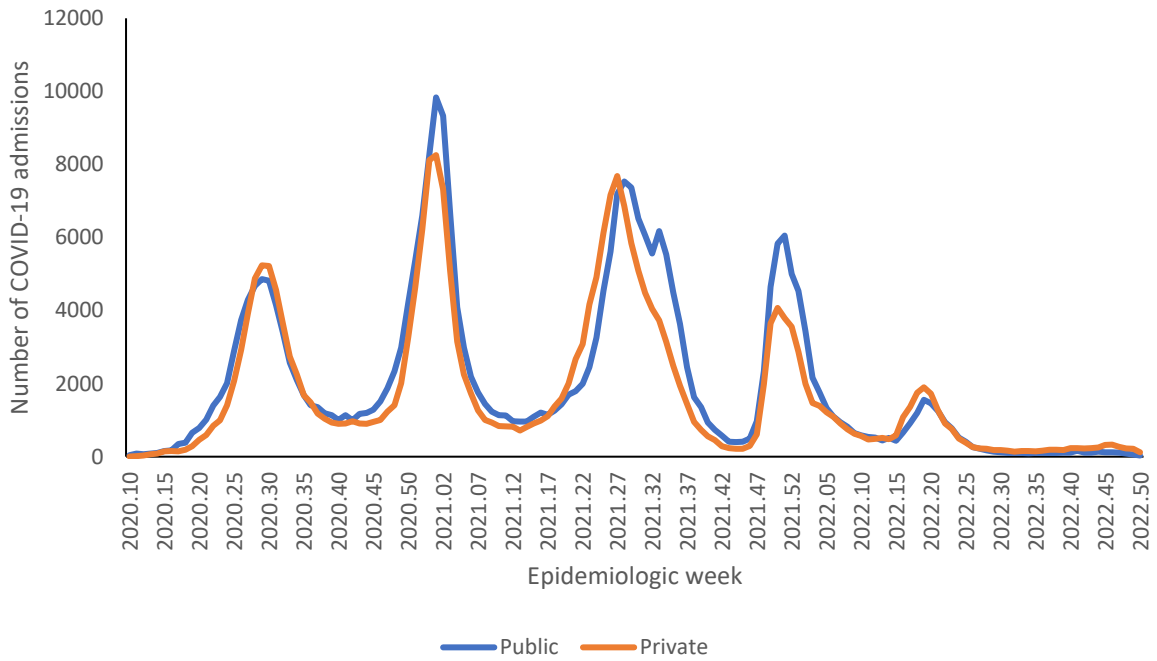


Figure 1: Number of reported COVID-19 admissions by health sector and epidemiologic week of diagnosis, South Africa, 5 March 2020-17 December 2022, N=546,443

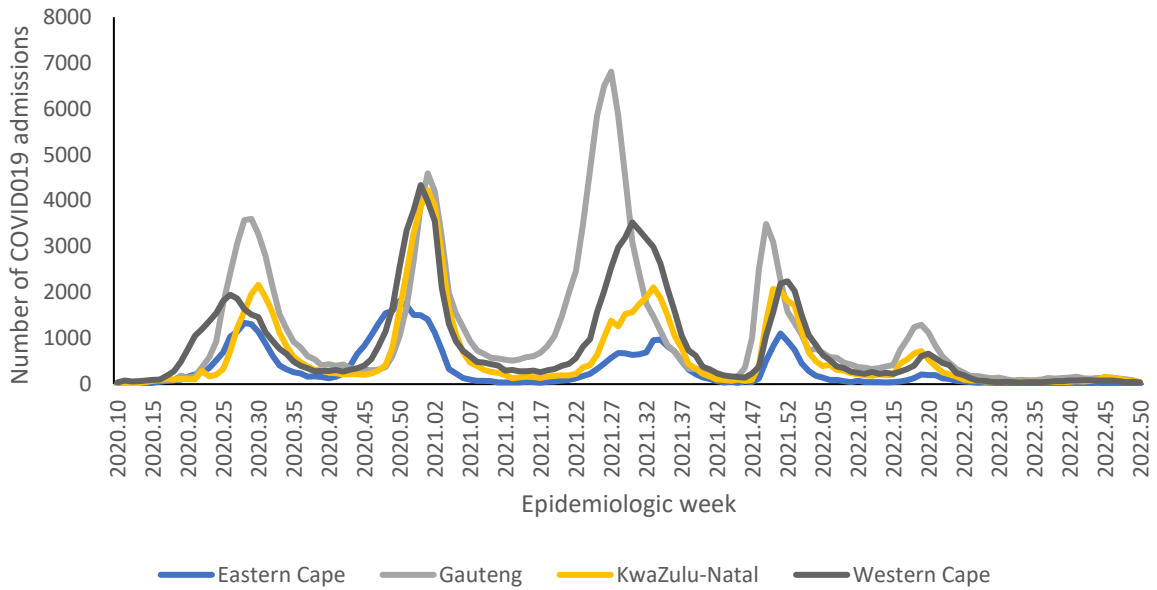


Figure 2a: Number of reported COVID-19 admissions, by provinces with highest admissions and epidemiologic week of diagnosis, South Africa, 5 March 2020-17 December 2022, N=546,443

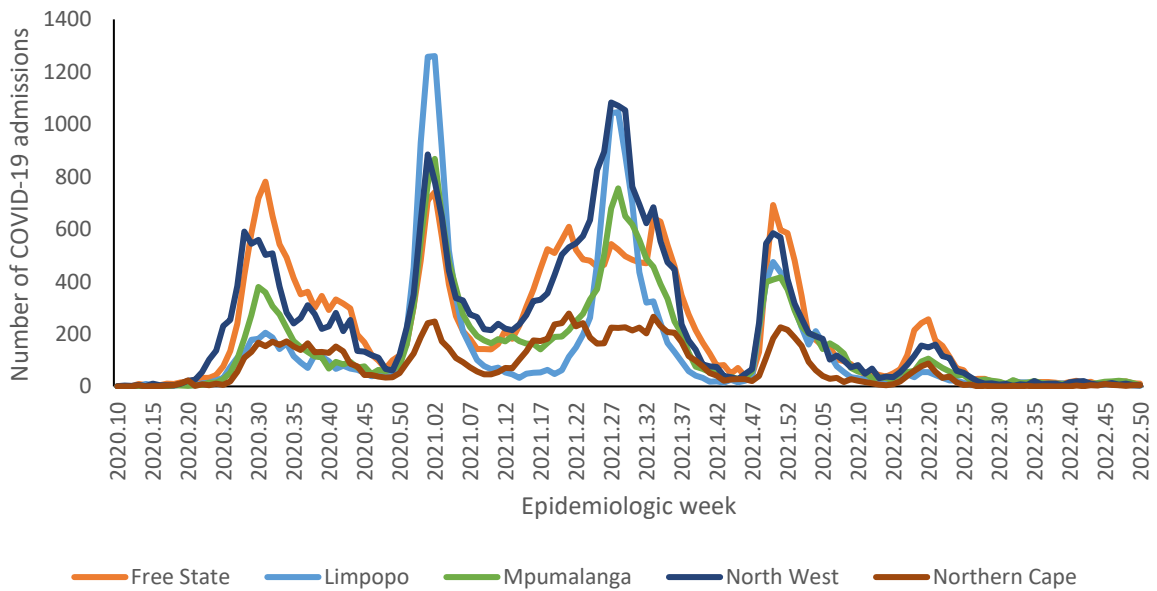


Figure 2b: Number of reported COVID-19 admissions, by provinces with lowest admissions and epidemiologic week of diagnosis, South Africa, 5 March 2020-17 December 2022, N=546,443

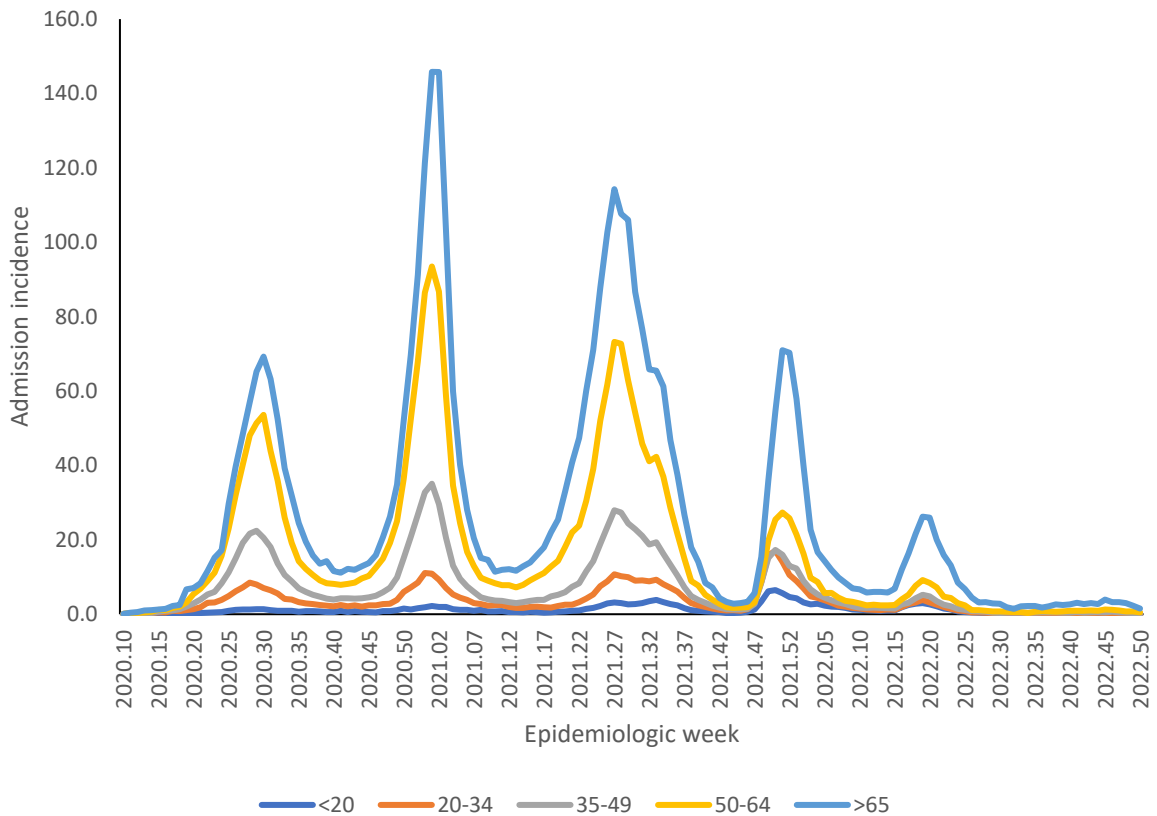


Figure 3: Incidence risk of COVID-19 admissions per 100,000 persons, by age group and epidemiologic week of diagnosis, South Africa, 5 March 2020-17 December 2022, N=546,443

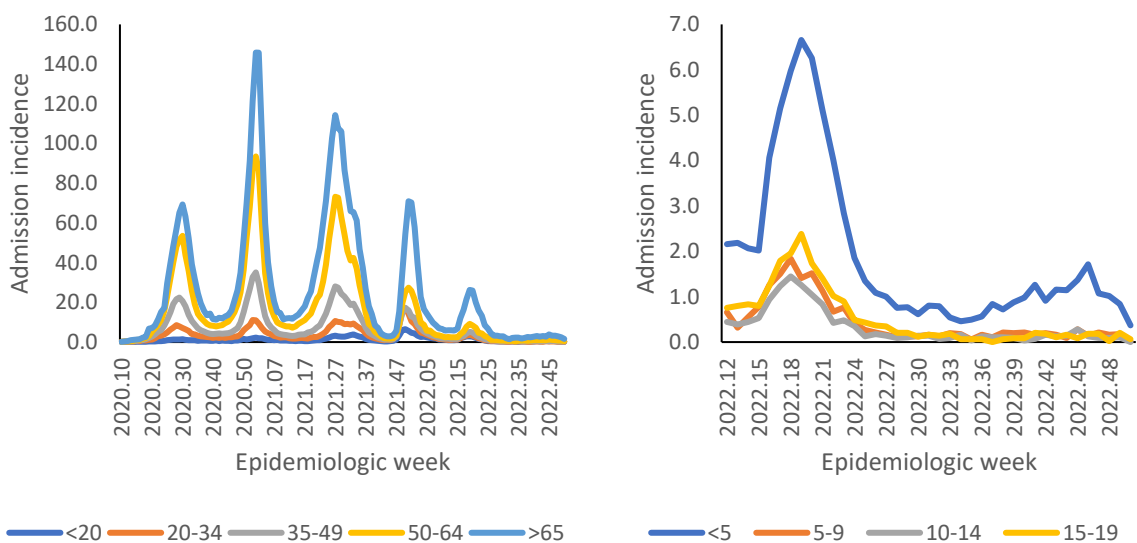


Figure 4: Incidence risk of COVID-19 admissions per 100,000 persons, by age group and epidemiologic week of diagnosis, South Africa, 19 March 2022-17 December 2022



Epidemiological and demographic trends in in-hospital mortality

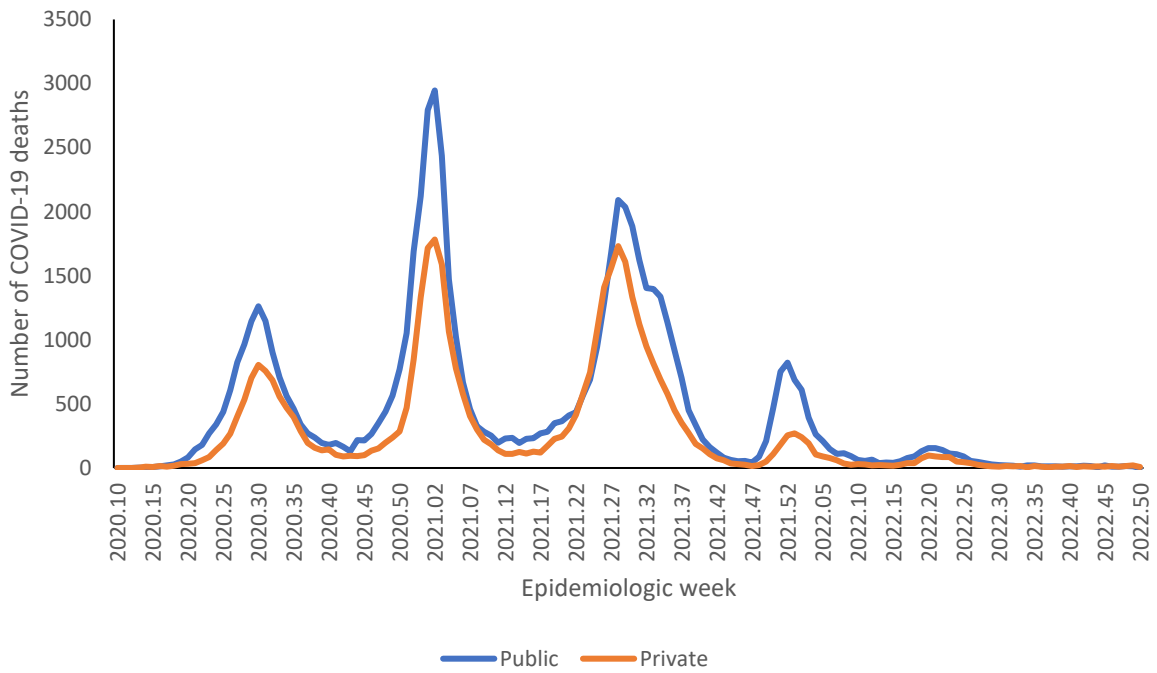


Figure 5: Number of reported COVID-19 in-hospital deaths, by health sector and epidemiologic week, South Africa, 5 March 2020-17 December 2022, N=104,614

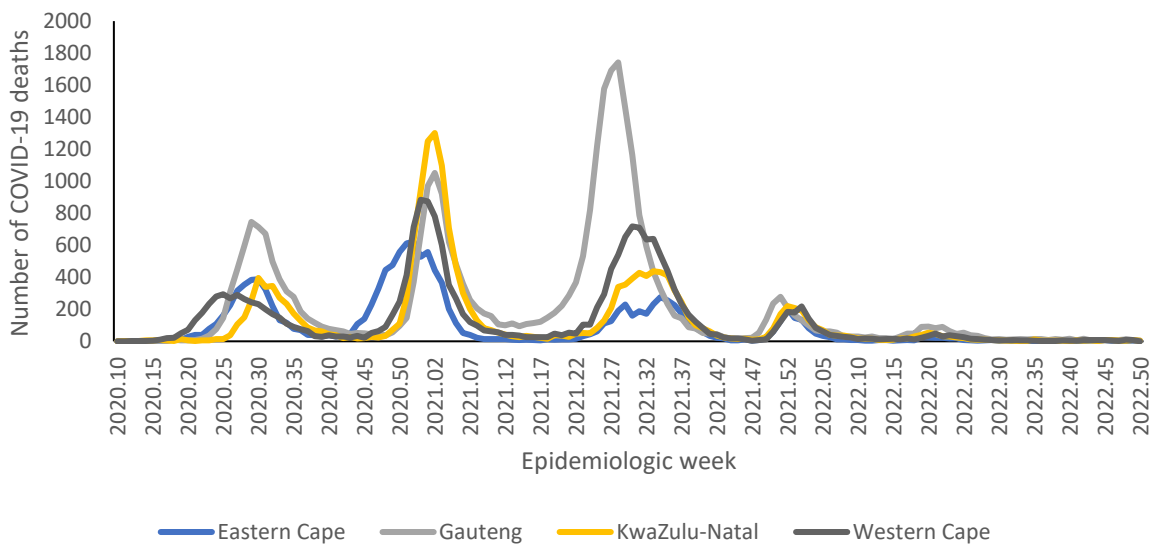


Figure 6a: Number of reported COVID-19 in-hospital deaths, by province with highest deaths and epidemiologic week of death, South Africa, 5 March 2020-17 December 2022, N=104,614

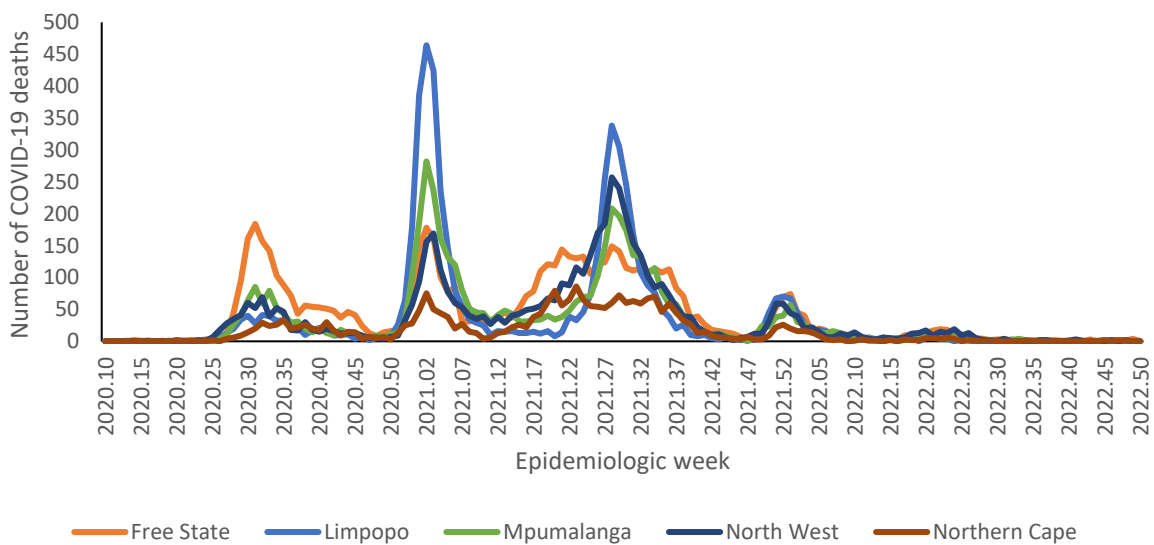


Figure 6b: Number of reported COVID-19 in-hospital deaths, by province with lowest deaths and epidemiologic week of death, South Africa, 5 March 2020-17 December 2022, N=104,614

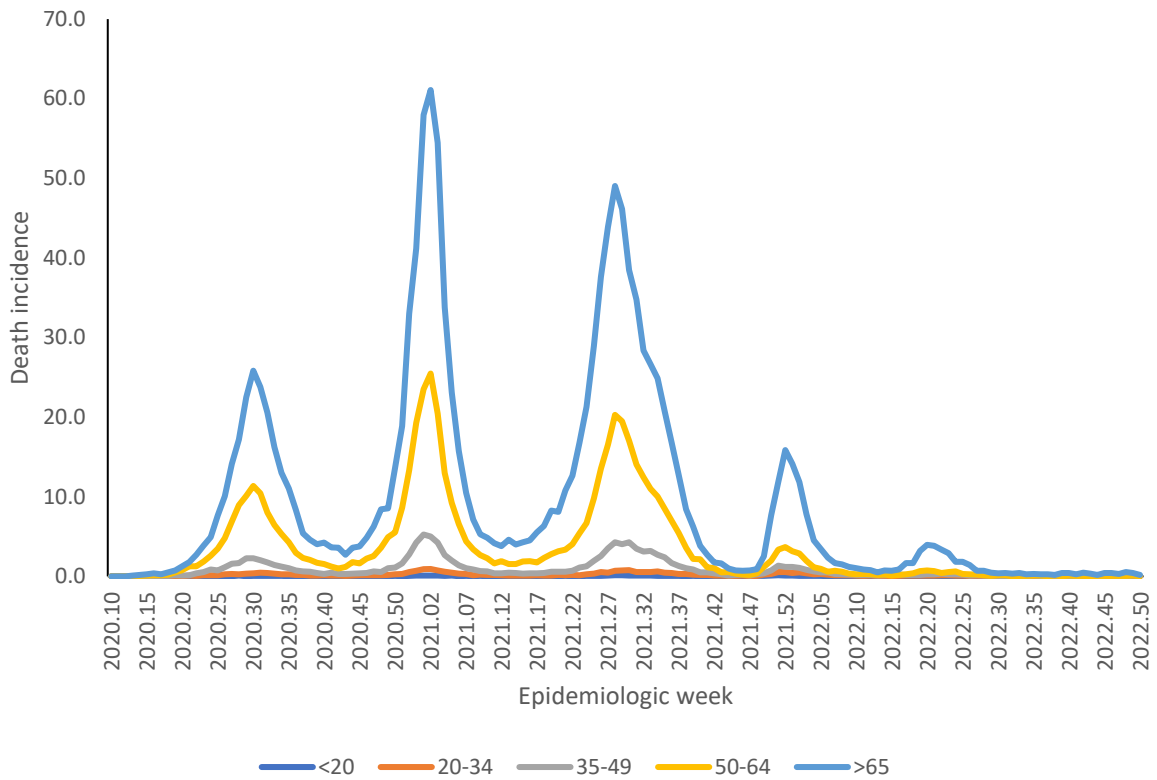


Figure 7: Incidence risk of COVID-19 in-hospital deaths per 100,000 persons, by age group and epidemiologic week of death, South Africa, 5 March 2020-17 December 2022, N=104,614

Provincial trends

Table 2: Number and cumulative incidence risk of COVID-19 hospitalisations and in-hospital deaths per 100,000 persons by province, South Africa, 5 March 2020-17 December 2022.

Province	Provincial Population mid 2020*	Cumulative admissions	Cumulative incidence risk of admissions / 100,000	Cumulative deaths	Cumulative incidence risk of deaths / 100,000
Eastern Cape	6676590	48996	733.8	13329	199.6
Free State	2932441	32819	1119.2	6165	210.2
Gauteng	15810388	161 730	1022.9	30739	194.4
KwaZulu-Natal	11513575	90336	784.6	17655	153.3
Limpopo	5926724	21274	359.0	5332	90.0
Mpumalanga	4743584	23189	488.8	4931	104.0
North West	4122854	34 325	832.6	5022	121.8
Northern Cape	1303047	11 952	917.2	2464	189.1
Western Cape	7113776	121 822	1712.5	18977	266.8
South Africa	60142978	546 443	908.6	104 614	173.9

*StatsSA mid-year population estimates 2020

Table 3: Previous 14 days and current 14 days daily average COVID-19 admissions and deaths and percentage changes, South Africa, 19 November-17 December 2022.

Province	Hospital admissions		Percentage change in admissions	Hospital deaths		Percentage change in deaths
	Previous 14 days average admissions	Current 14 days average admissions		Previous 14 days average deaths	Current 14 days average deaths	
Eastern Cape	2.71	1.50	-44.74	0.29	0.29	0.00
Free State	2.43	1.57	-35.29	0.21	0.29	33.33
Gauteng	16.43	8.43	-48.70	1.36	0.86	-36.84
KwaZulu-Natal	14.21	8.86	-37.69	0.43	0.79	83.33
Limpopo	1.00	0.36	-64.29	0.07	0.00	-100.00
Mpumalanga	2.86	1.29	-55.00	0.00	0.07	0.00
North West	1.21	0.71	-41.18	0.14	0.00	-100.00
Northern Cape	0.50	0.64	28.57	0.21	0.00	-100.00
Western Cape	7.79	6.36	-18.35	0.79	0.57	-27.27

* Reporting of new admissions in the most recent week may be delayed

Table 4: Previous 7 days and current 7 days daily average COVID-19 admissions and deaths and percentage changes, South Africa, 4 December-17 December 2022.

Province	Hospital admissions		Percentage change in admissions	Hospital deaths		Percentage change in deaths
	Previous 7 days average admissions	Current 7 days average admissions		Previous 7 days average deaths	Current 7 days average deaths	
Eastern Cape	2.14	0.86	-60.00	0.43	0.14	-66.67
Free State	1.71	1.43	-16.67	0.57	0.00	-100.00
Gauteng	12.29	4.57	-62.79	1.14	0.57	-50.00
KwaZulu-Natal	11.29	6.43	-43.04	1.14	0.43	-62.50
Limpopo	0.43	0.29	-33.33	0.00	0.00	0.00
Mpumalanga	1.86	0.71	-61.54	0.00	0.14	0.00
North West	0.86	0.57	-33.33	0.00	0.00	0.00
Northern Cape	0.71	0.57	-20.00	0.00	0.00	0.00
Western Cape	7.14	5.57	-22.00	1.14	0.00	-100.00

* Reporting of new admissions in the most recent week may be delayed

Eastern Cape

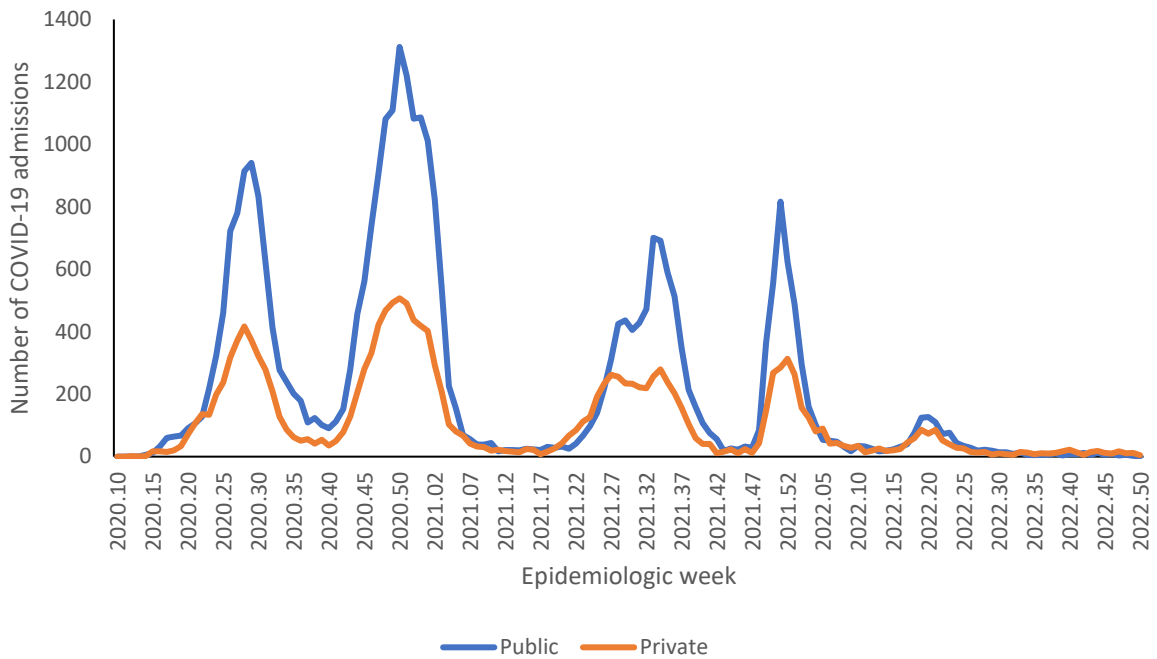


Figure 8: Number of reported COVID-19 admissions by health sector and epidemiologic week of diagnosis, Eastern Cape, 5 March 2020-17 December 2022, N=49,107

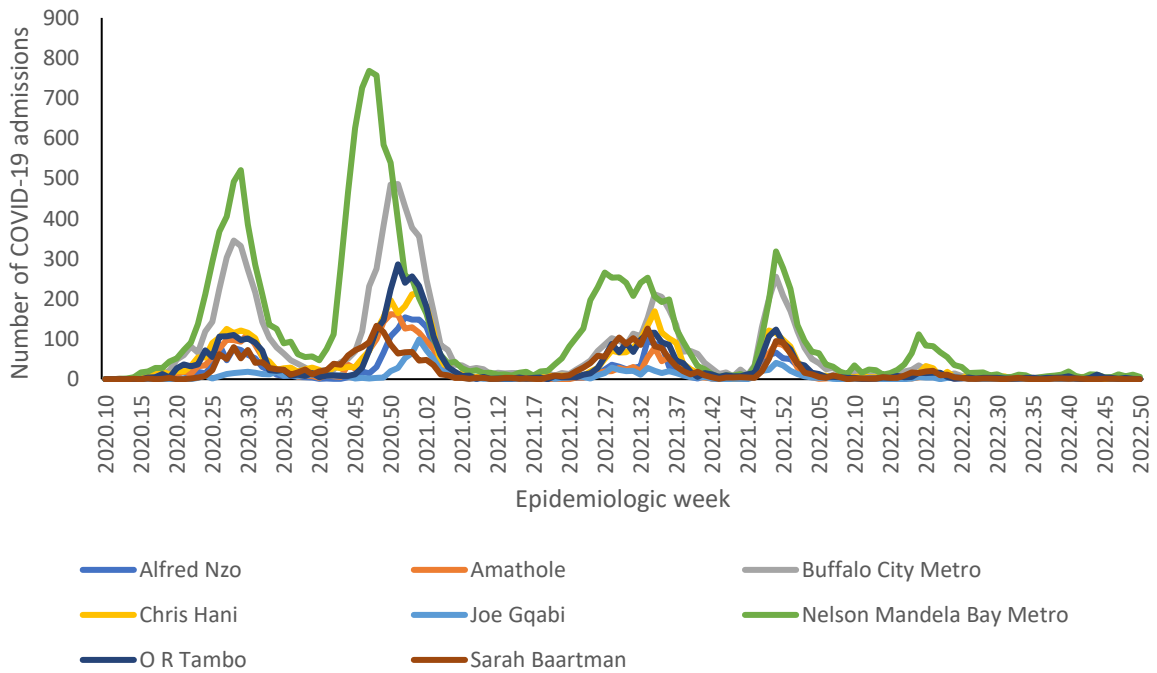


Figure 9: Number of reported COVID-19 admissions, by district and epidemiologic week, Eastern Cape, 5 March 2020-17 December 2022, N=49,107

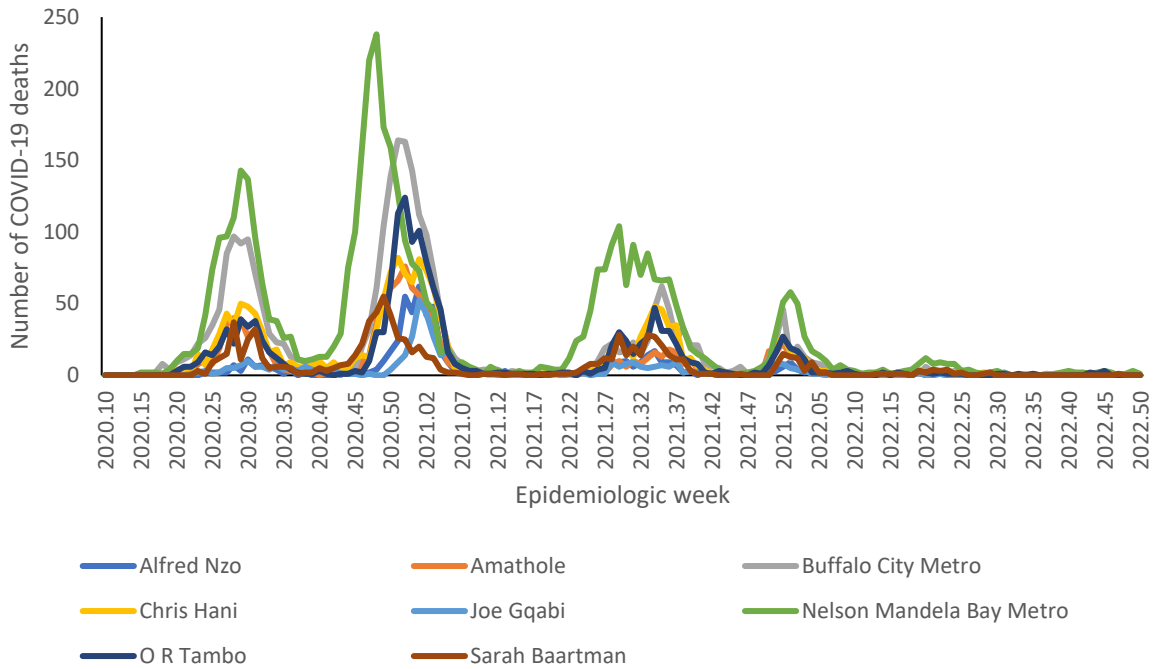


Figure 10: Number of reported COVID-19 in-hospital deaths, by district and epidemiologic week, Eastern Cape, 5 March 2020-17 December 2022, N=13,329

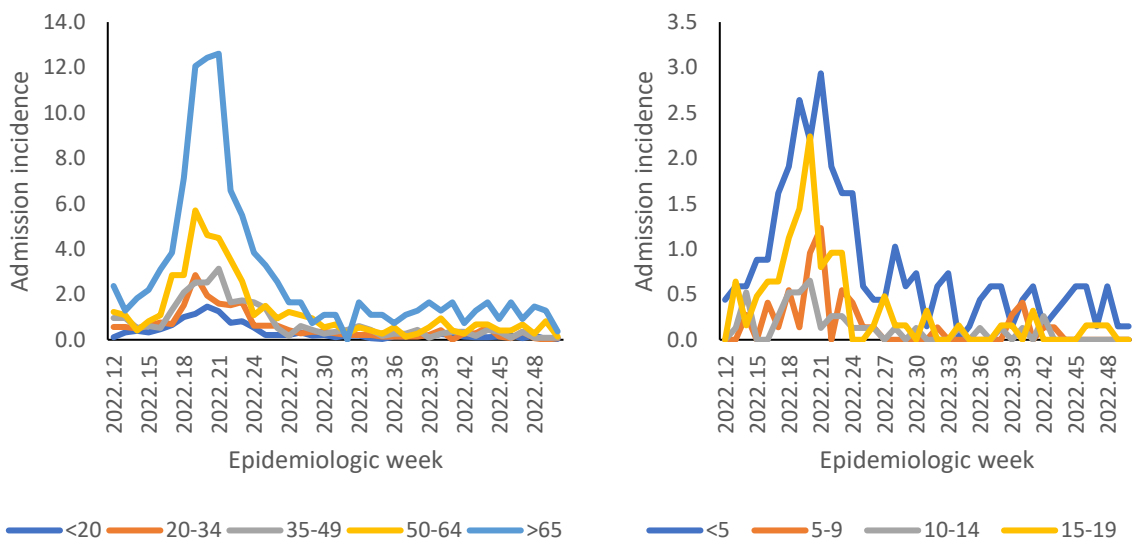


Figure 11: Incidence risk of COVID-19 admissions per 100,000 persons by age group and epidemiologic week of diagnosis, Eastern Cape, 19 March 2022-17 December 2022

Table 5: Previous 14 days and current 14 days average COVID-19 admissions and deaths and percentage changes, Eastern Cape, 19 November-17 December 2022.

District	Previous 14 days admissions average	Current 14 days admissions average	Percentage change in admissions	Previous 14 days deaths average	Current 14 days deaths average	Percentage change in deaths
Alfred Nzo	0.43	0.07	-83.33	0.07	0.00	-100.00
Amathole	0.07	0.00	-100.00	0.00	0.00	0.00
Buffalo City Metro	0.36	0.07	-80.00	0.07	0.00	-100.00
Chris Hani	0.14	0.07	-50.00	0.00	0.00	0.00
Joe Gqabi	0.00	0.00	0.00	0.00	0.00	0.00
Nelson Mandela Bay	1.36	1.21	-10.53	0.07	0.29	300.00
O R Tambo	0.29	0.07	-75.00	0.00	0.00	0.00
Sarah Baartman	0.07	0.00	-100.00	0.07	0.00	-100.00



Free State

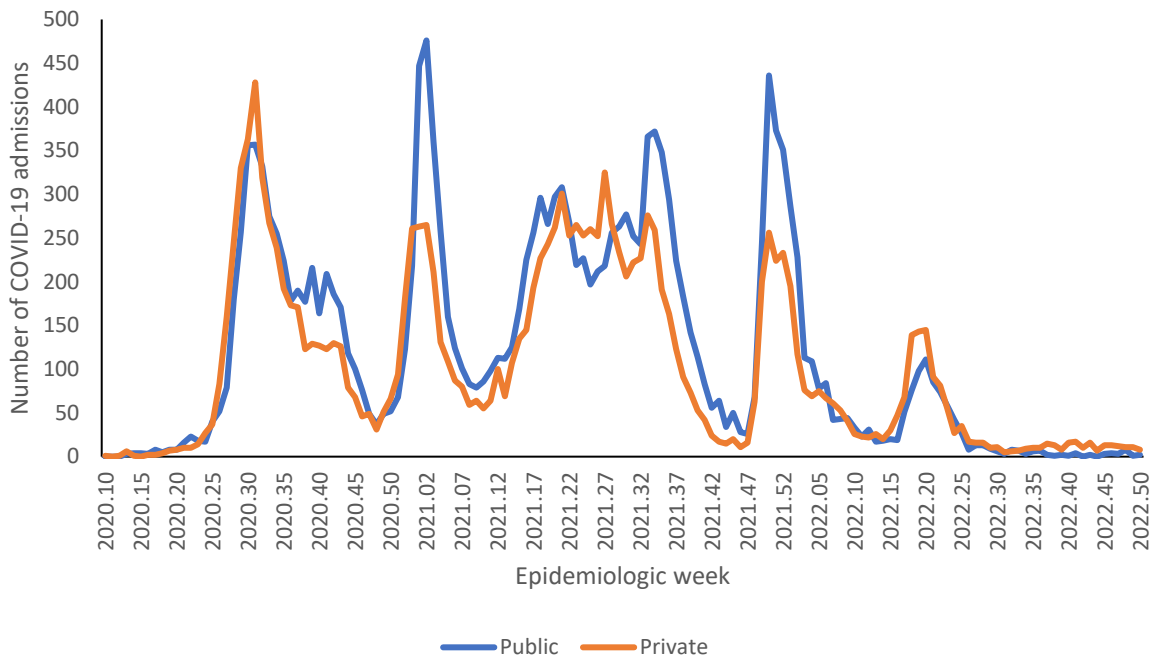


Figure 12: Number of reported COVID-19 admissions by health sector and epidemiologic week of diagnosis, Free State, 5 March 2020-17 December 2022, N=32,844

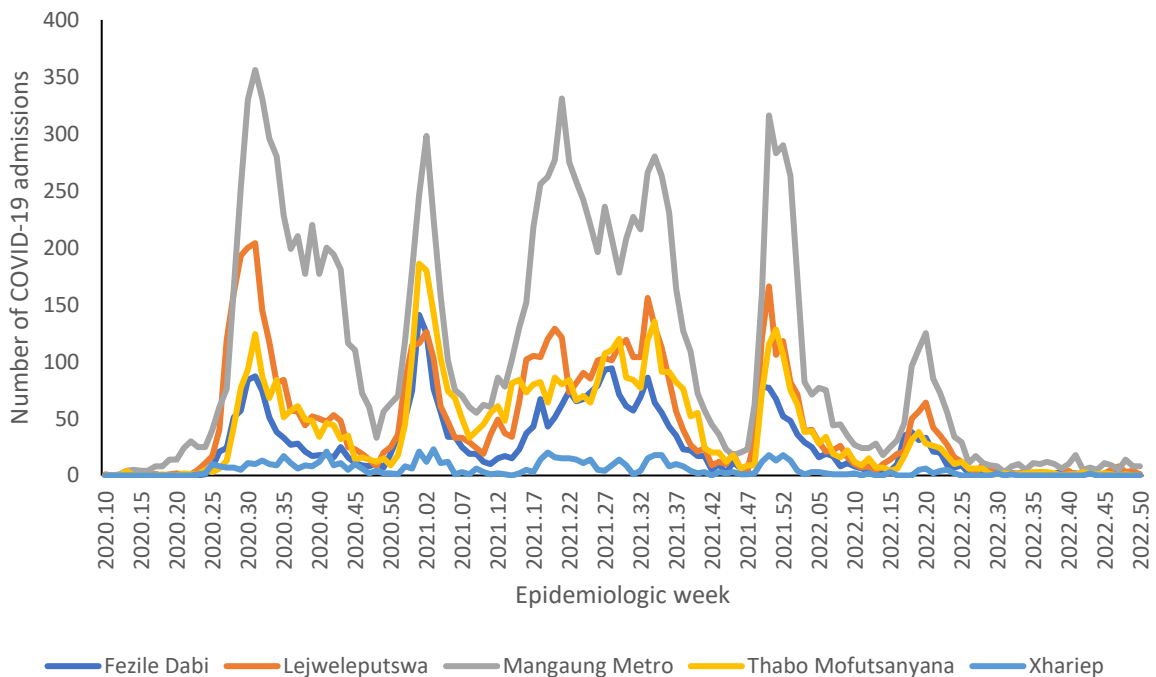


Figure 13: Number of reported COVID-19 admissions, by district and epidemiologic week, Free State, 5 March 2020-17 December 2022, N=32,844

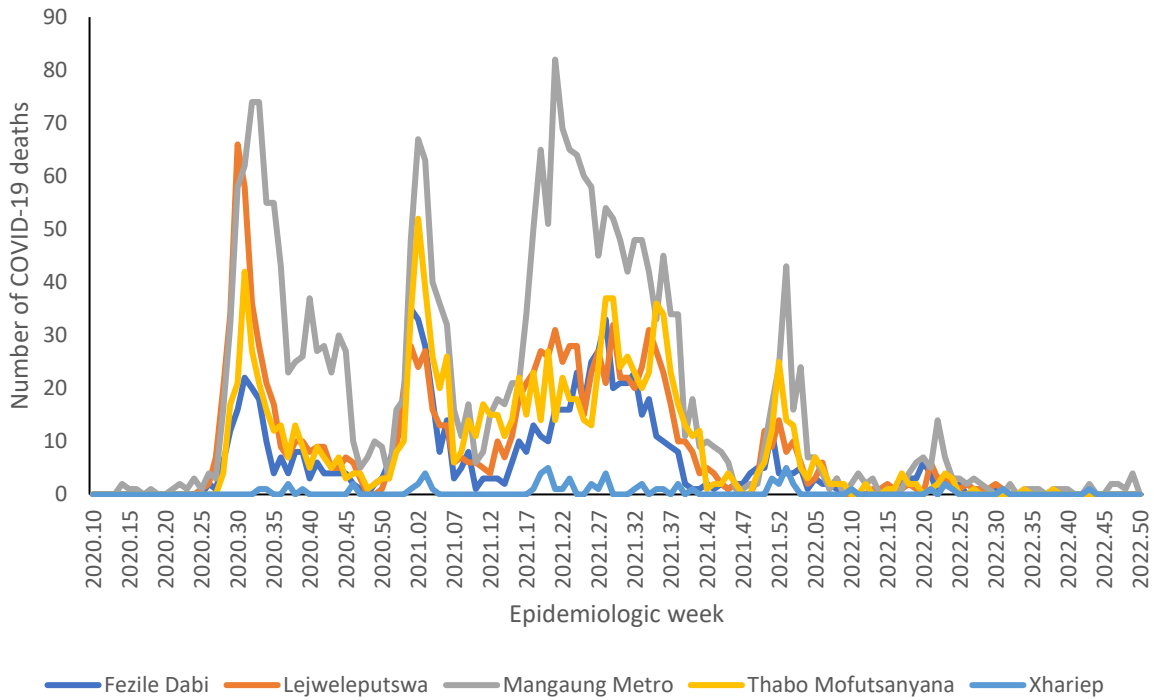


Figure 14: Number of reported COVID-19 in-hospital deaths, by district and epidemiologic week, Free State, 5 March 2020-17 December 2022, N=6,165

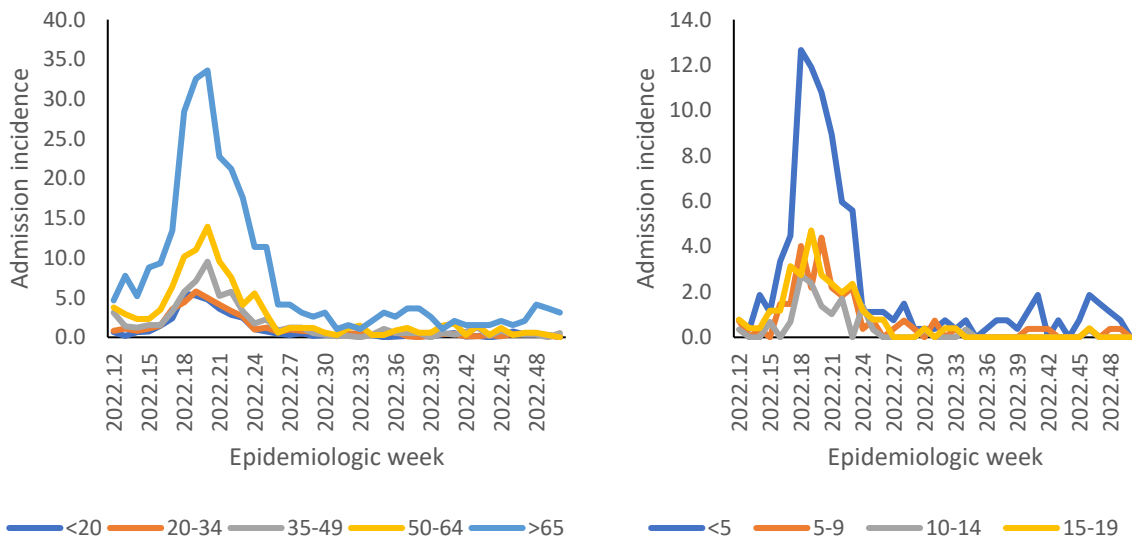


Figure 15: Incidence risk of COVID-19 admissions per 100,000 persons by age group and epidemiologic week of diagnosis, Free State, 19 March 2022- 17 December 2022

Table 6: Previous 14 days and current 14 days average COVID-19 admissions and deaths and percentage changes, Free State, 19 November-17 December 2022.

District	Previous 14 days admissions average	Current 14 days admissions average	Percentage change in admissions	Previous 14 days deaths average	Current 14 days deaths average	Percentage change in deaths
Fezile Dabi	0.21	0.07	-66.67	0.00	0.00	0.00
Lejweleputswa	0.79	0.36	-54.55	0.00	0.00	0.00
Mangaung Metro	1.36	1.14	-15.79	0.21	0.29	33.33
Thabo Mofutsanyana	0.07	0.00	-100.00	0.00	0.00	0.00
Xhariep	0.00	0.00	0.00	0.00	0.00	0.00



Gauteng

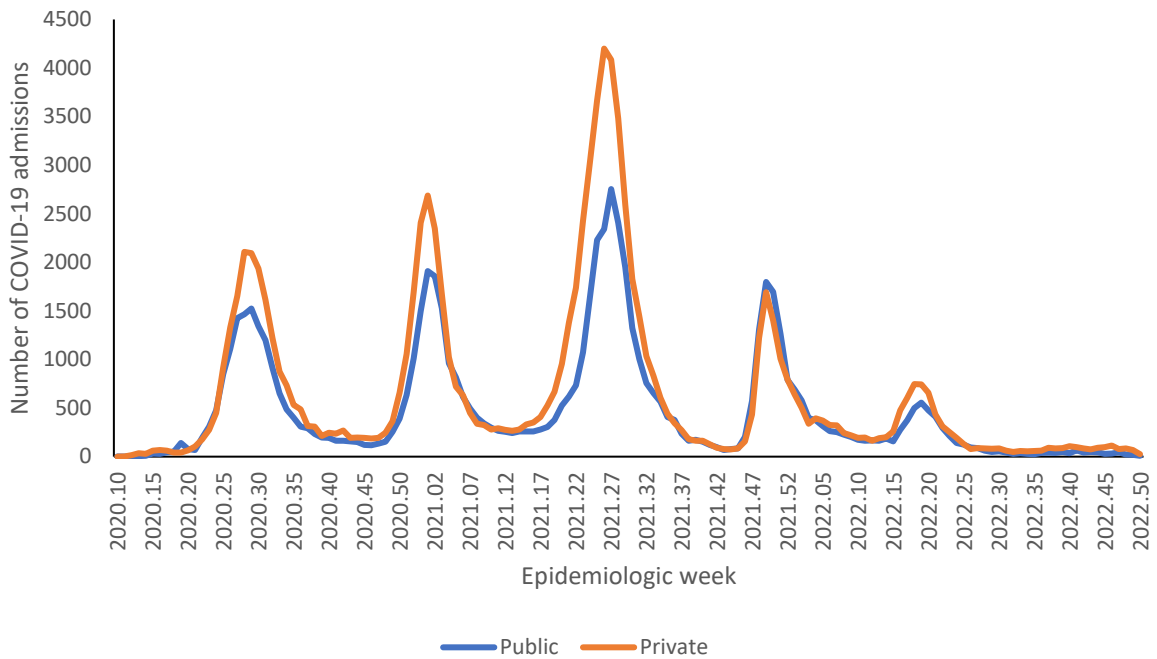


Figure 16: Number of reported COVID-19 admissions by health sector and epidemiologic week of diagnosis, Gauteng, 5 March 2020-17 December 2022, N=162,507

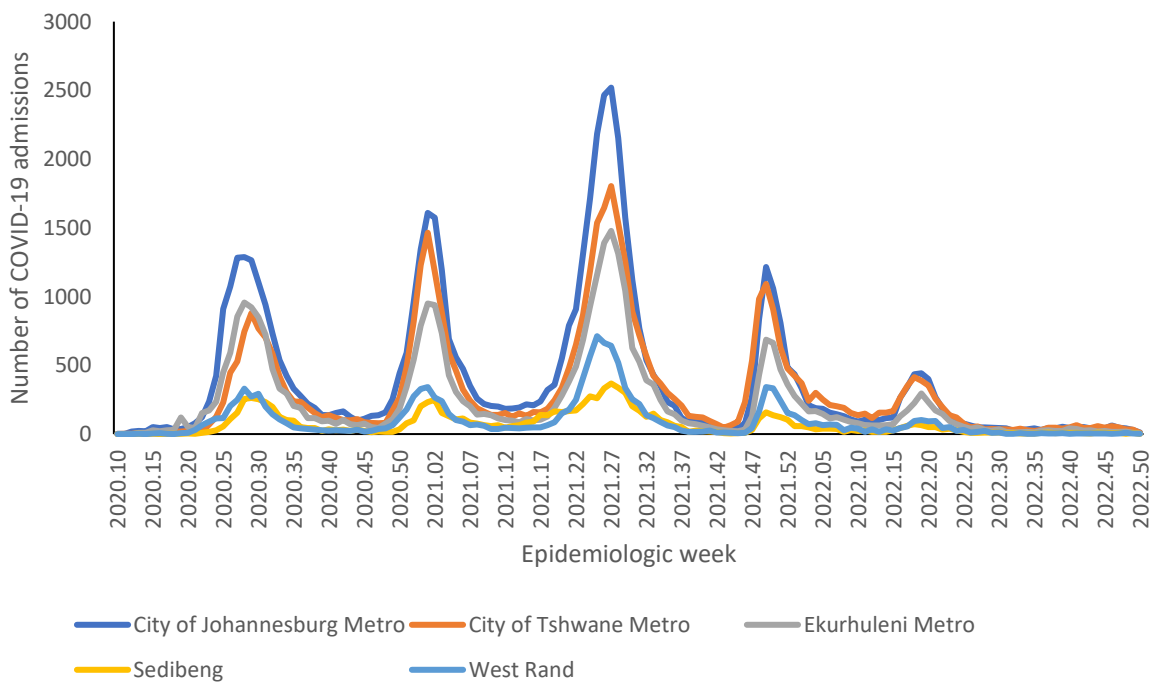


Figure 17: Number of reported COVID-19 admissions, by district and epidemiologic week, Gauteng, 5 March 2020-17 December 2022, N=162,507

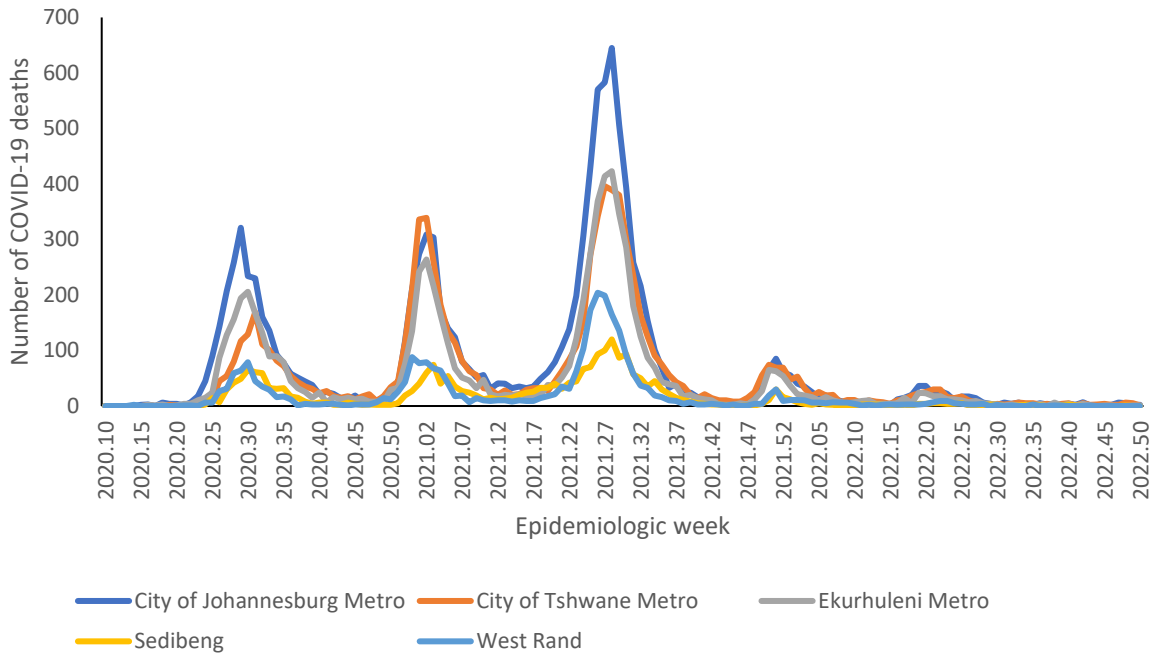


Figure 18: Number of reported COVID-19 in-hospital deaths, by district and epidemiologic week, Gauteng, 5 March 2020-17 December 2022, N=30,739

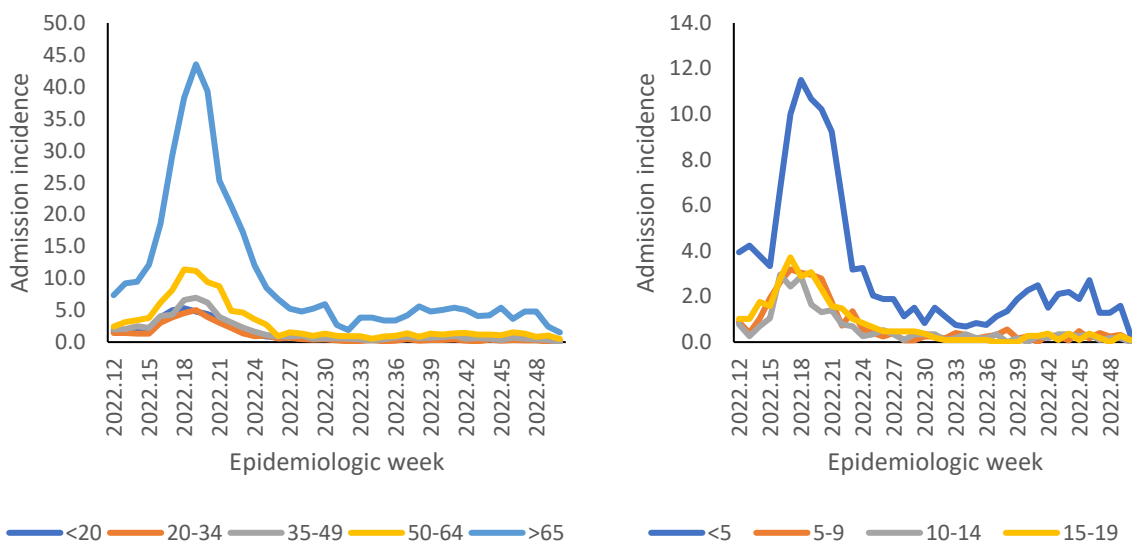


Figure 19: Incidence risk of COVID-19 admissions per 100,000 persons, per age group and epidemiologic week of diagnosis, Gauteng, 19 March 2022- 17 December 2022



Table 7: Previous 14 days and current 14 days average COVID-19 admissions and deaths and percentage changes, Gauteng, 19 November-17 December 2022.

District	Previous 14 days admissions average	Current 14 days admissions average	Percentage change in admissions	Previous 14 days deaths average	Current 14 days deaths average	Percentage change in deaths
City of Johannesburg Metro	6.29	3.00	-52.27	0.79	0.29	-63.64
City of Tshwane Metro	5.93	3.07	-48.19	0.50	0.43	-14.29
Ekurhuleni Metro	2.50	1.00	-60.00	0.00	0.14	0.00
Sedibeng	0.79	0.79	0.00	0.07	0.00	-100.00
West Rand	0.93	0.57	-38.46	0.00	0.00	0.00

KwaZulu-Natal

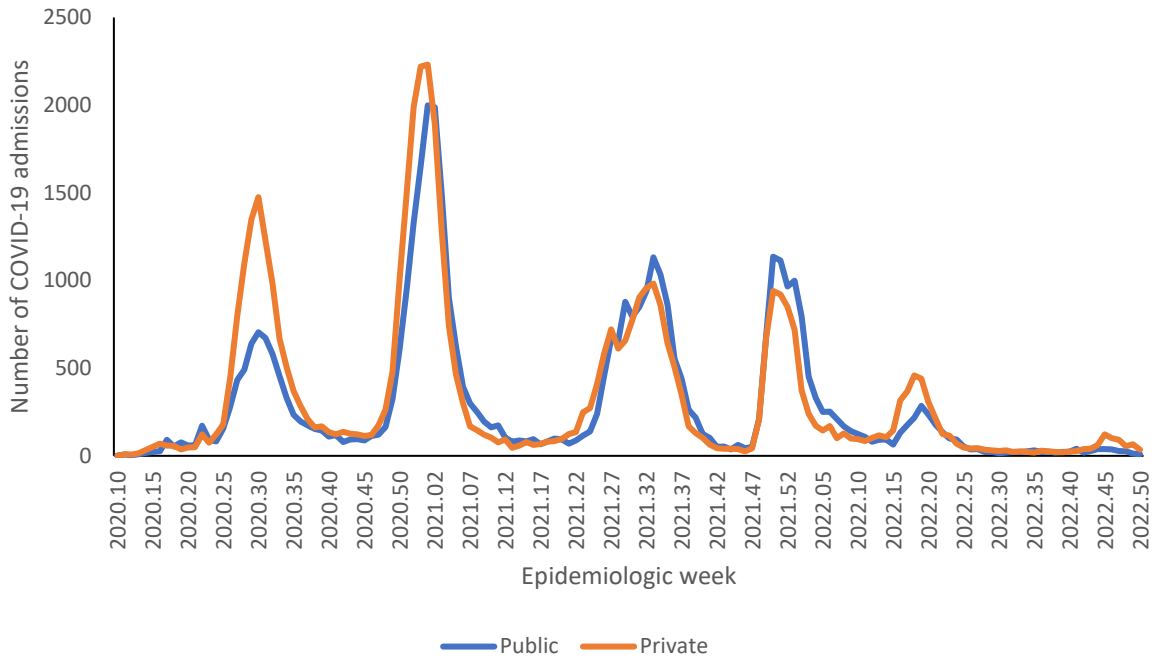


Figure 20: Number of reported COVID-19 admissions by health sector and epidemiologic week of diagnosis, KwaZulu-Natal, 5 March 2020-17 December 2022, N=90,664

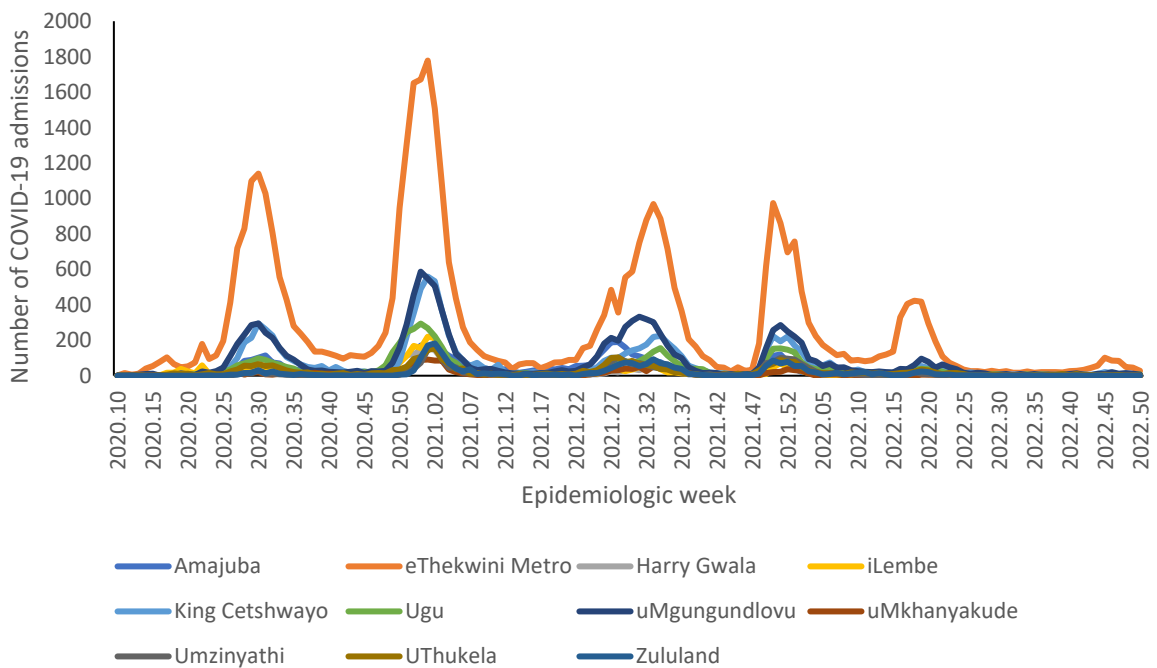


Figure 21: Number of reported COVID-19 admissions, by district and epidemiologic week, KwaZulu-Natal, 5 March 2020-17 December 2022, N=90,664

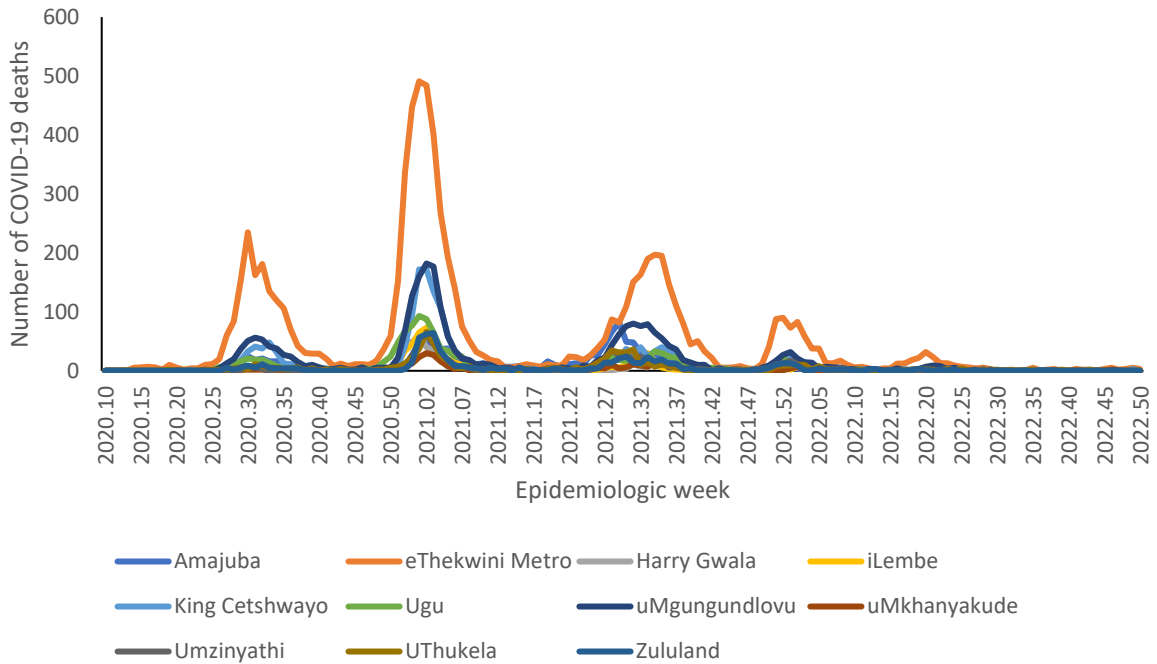


Figure 22: Number of reported COVID-19 in-hospital deaths, by district and epidemiologic week, KwaZulu-Natal, 5 March 2020-17 December 2022, N=17,655

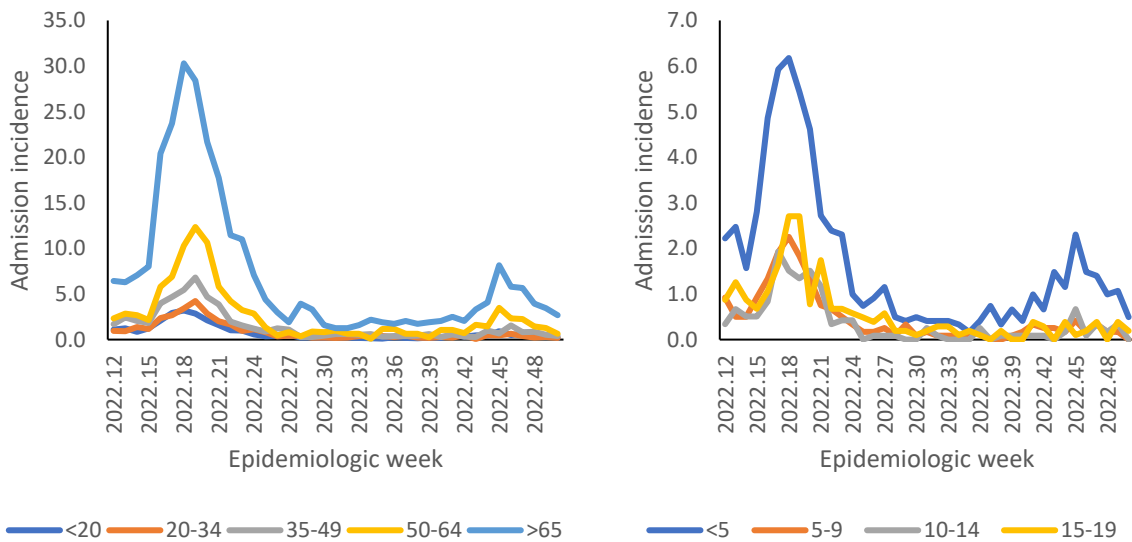


Figure 23: Incidence risk of COVID-19 admissions per 100,000 persons, by age group and epidemiologic week of diagnosis, KwaZulu-Natal, 19 March 2022- 17 December 2022

Table 8: Previous 14 days and current 14 days average COVID-19 admissions and deaths and percentage changes, KwaZulu-Natal, 19 November-17 December 2022.

District	Previous 14 days admissions average	Current 14 days admissions average	Percentage change in admissions	Previous 14 days deaths average	Current 14 days deaths average	Percentage change in deaths
Amajuba	0.14	0.07	-50.00	0.00	0.00	0.00
eThekweni Metro	9.50	5.21	-45.11	0.36	0.57	60.00
Harry Gwala	0.00	0.00	0.00	0.00	0.00	0.00
iLembe	0.43	0.36	-16.67	0.00	0.00	0.00
King Cetshwayo	1.14	0.50	-56.25	0.00	0.21	0.00
Ugu	0.50	1.14	128.57	0.00	0.00	0.00
uMgungundlovu	1.79	1.21	-32.00	0.07	0.00	-100.00
uMkhanyakude	0.14	0.07	-50.00	0.00	0.00	0.00
Umzinyathi	0.14	0.21	50.00	0.00	0.00	0.00
UThukela	0.36	0.07	-80.00	0.00	0.00	0.00
Zululand	0.07	0.00	-100.00	0.00	0.00	0.00



Limpopo

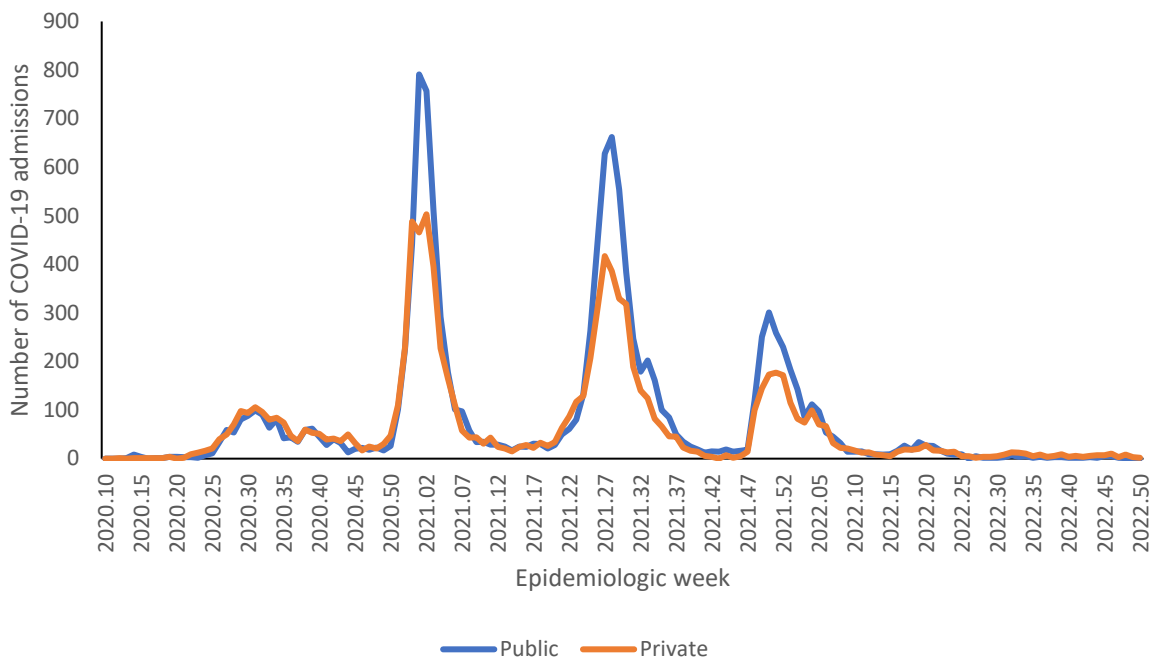


Figure 24: Number of reported COVID-19 admissions by health sector and epidemiologic week of diagnosis, Limpopo, 5 March 2020-17 December 2022, N=21,297

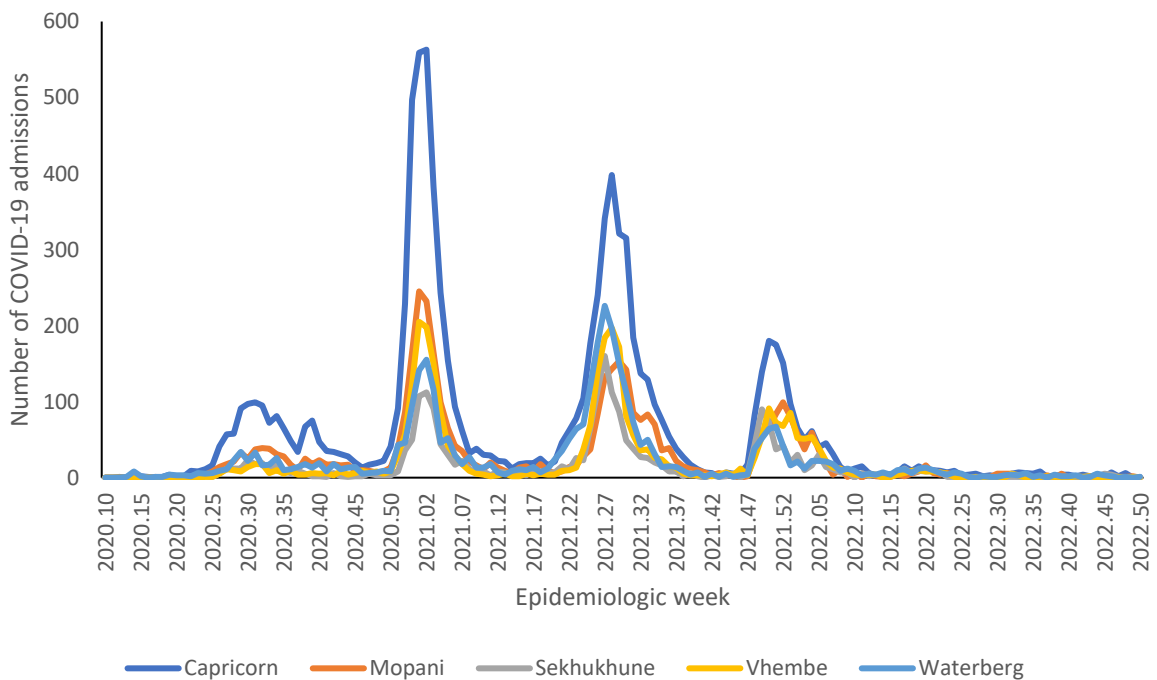


Figure 25: Number of reported COVID-19 admissions, by district and epidemiologic week, Limpopo, 5 March 2020-17 December 2022, N=21,297

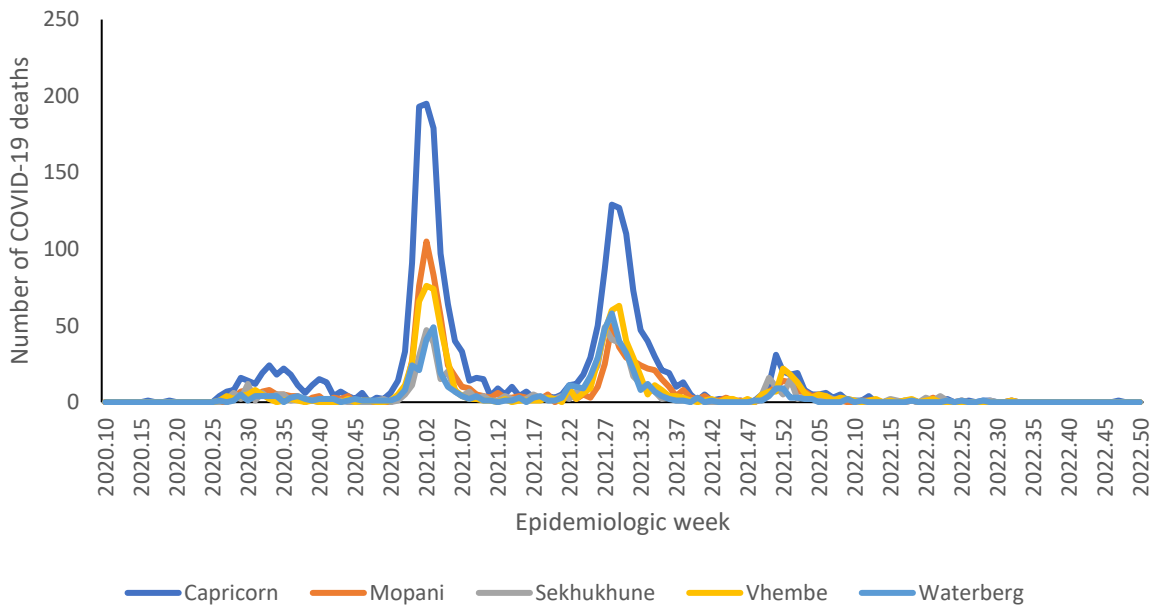


Figure 26: Number of reported COVID-19 in-hospital deaths, by district and epidemiologic week, Limpopo, 5 March 2020-17 December 2022, N=5,332

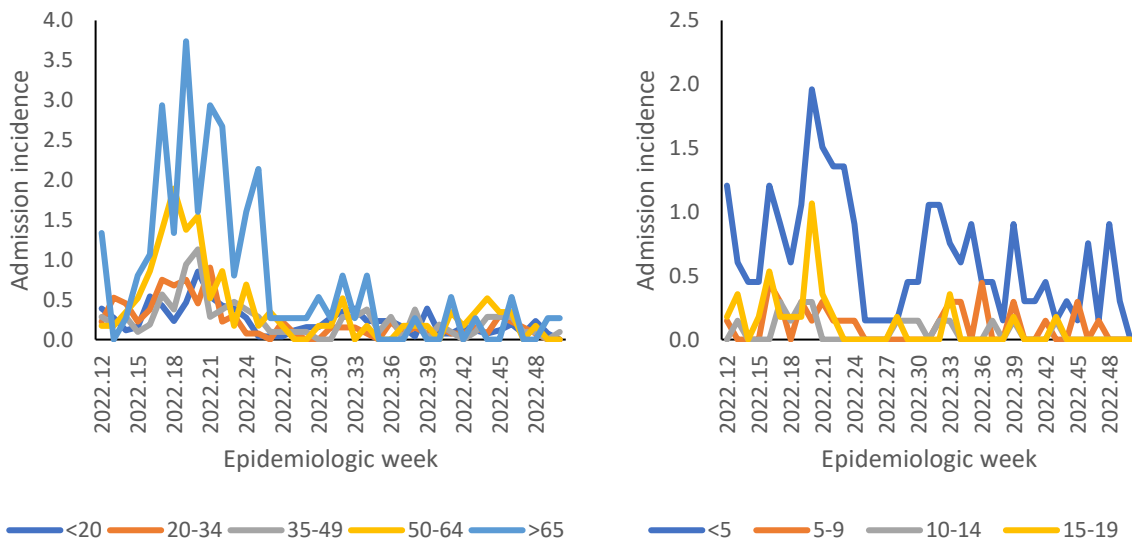


Figure 27: Incidence risk of COVID-19 admissions per 100,000 persons, by age group and epidemiologic week of diagnosis, Limpopo, 19 March 2022-17 December 2022

Table 9: Previous 14 days and current 14 days average COVID-19 admissions and deaths and percentage changes, Limpopo, 19 November-17 December 2022.

District	Previous 14 days admissions average	Current 14 days admissions average	Percentage change in admissions	Previous 14 days deaths average	Current 14 days deaths average	Percentage change in deaths
Capricorn	0.57	0.07	-87.50	0.07	0.00	-100.00
Mopani	0.14	0.14	0.00	0.00	0.00	0.00
Sekhukhune	0.14	0.00	-100.00	0.00	0.00	0.00
Vhembe	0.07	0.07	0.00	0.00	0.00	0.00
Waterberg	0.07	0.07	0.00	0.00	0.00	0.00



Mpumalanga

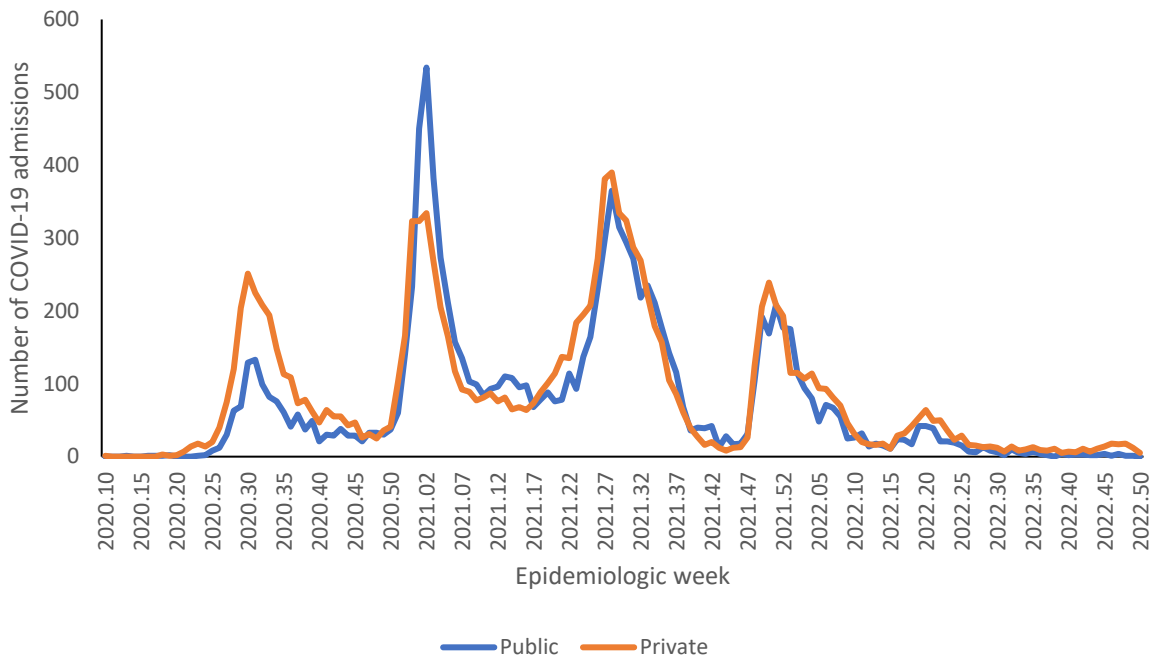


Figure 28: Number of reported COVID-19 admissions by health sector and epidemiologic week of diagnosis, Mpumalanga, 5 March 2020-17 December 2022, N=23,220

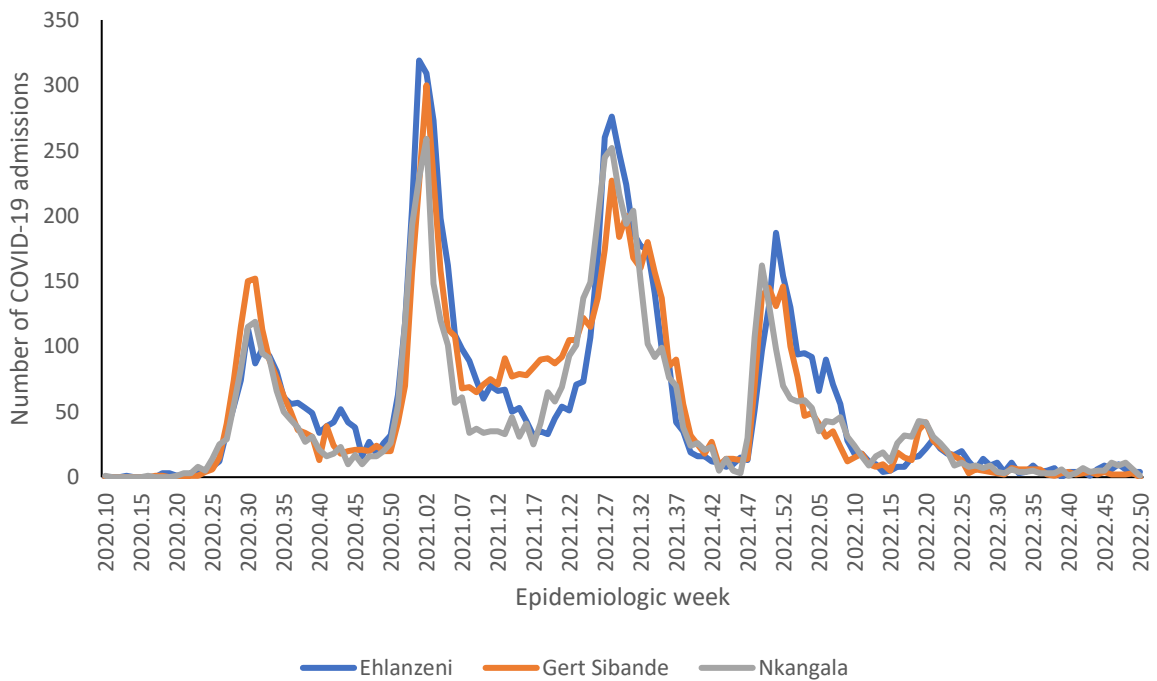


Figure 29: Number of reported COVID-19 admissions, by district and epidemiologic week, Mpumalanga, 5 March 2020-17 December 2022, N=23,220

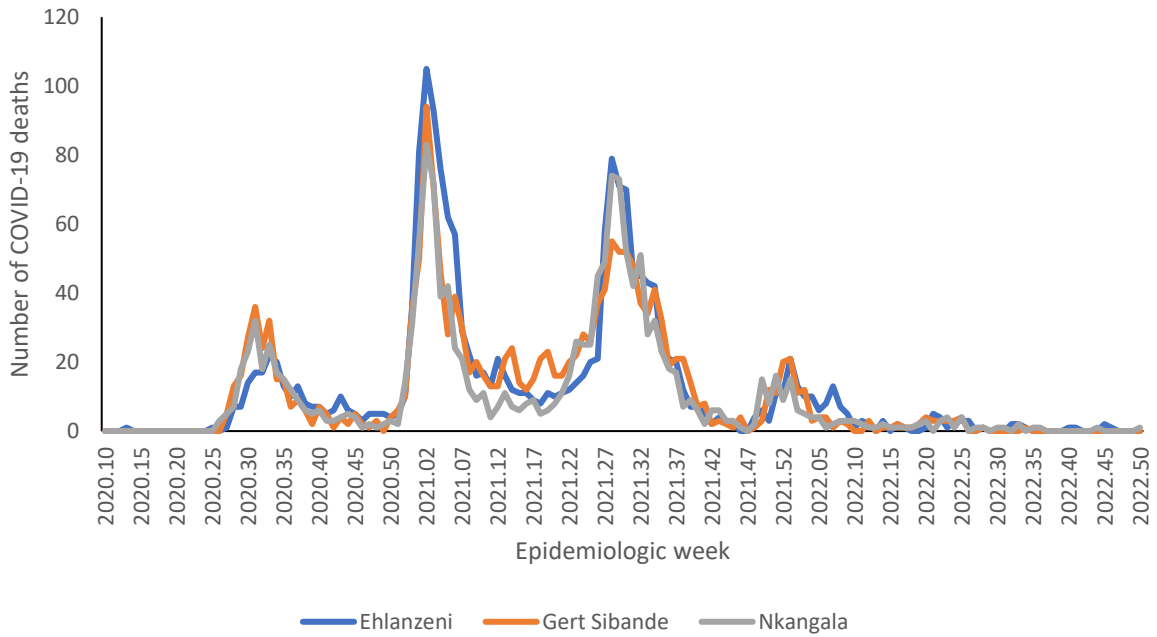


Figure 30: Number of reported COVID-19 in-hospital deaths, by district and epidemiologic week, Mpumalanga, 5 March 2020-17 December 2022, N=4,931

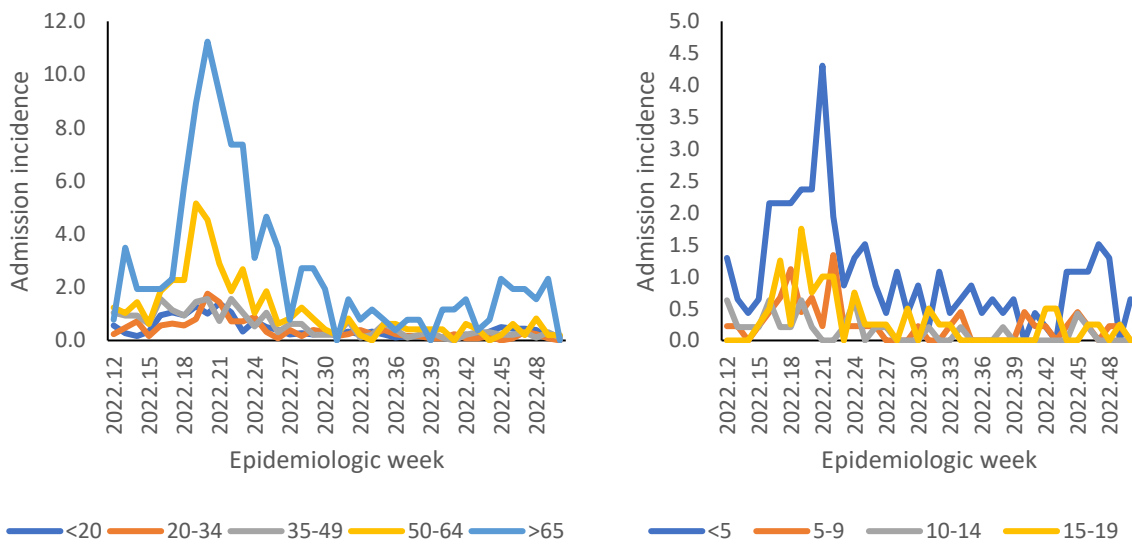


Figure 31: Incidence risk of COVID-19 admissions per 100,000 persons, by age group and epidemiologic week of diagnosis, Mpumalanga, 19 March 2022-17 December 2022

Table 10: Previous 14 days and current 14 days average COVID-19 admissions and deaths and percentage changes, Mpumalanga, 19 November-17 December 2022.

District	Previous 14 days admissions average	Current 14 days admissions average	Percentage change in admissions	Previous 14 days deaths average	Current 14 days deaths average	Percentage change in deaths
Ehlanzeni	1.14	0.57	-50.00	0.00	0.00	0.00
Gert Sibande	0.29	0.21	-25.00	0.00	0.00	0.00
Nkangala	1.43	0.50	-65.00	0.00	0.07	0.00

North West

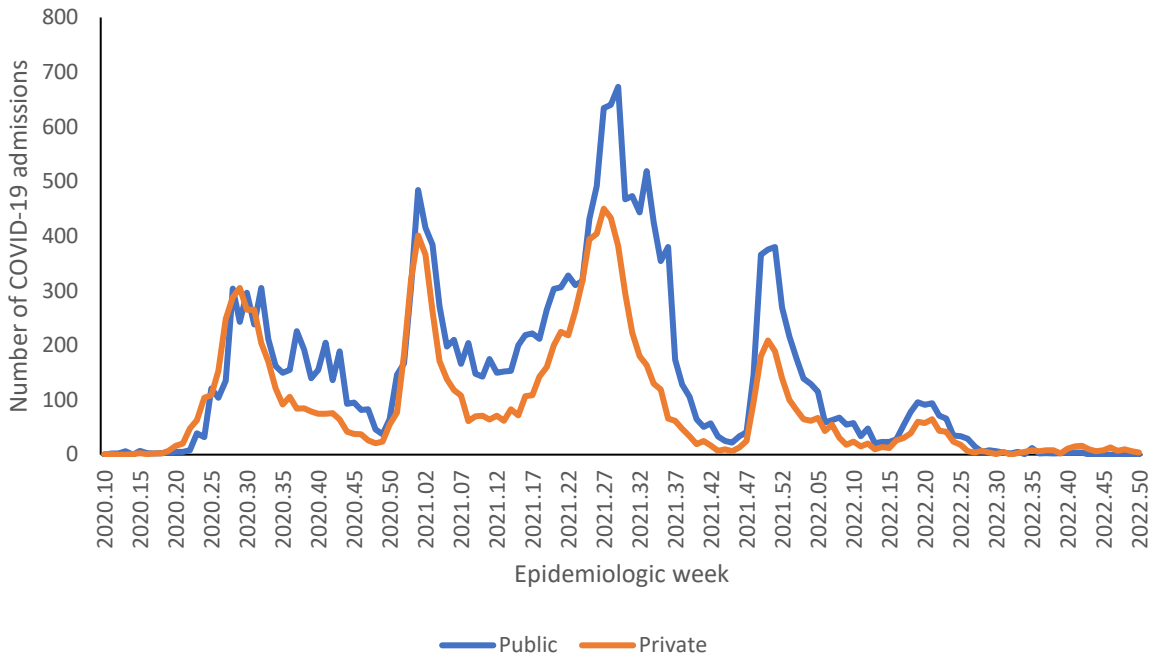


Figure 32: Number of reported COVID-19 admissions by health sector and epidemiologic week of diagnosis, North West, 5 March 2020-17 December 2022, N=34,360

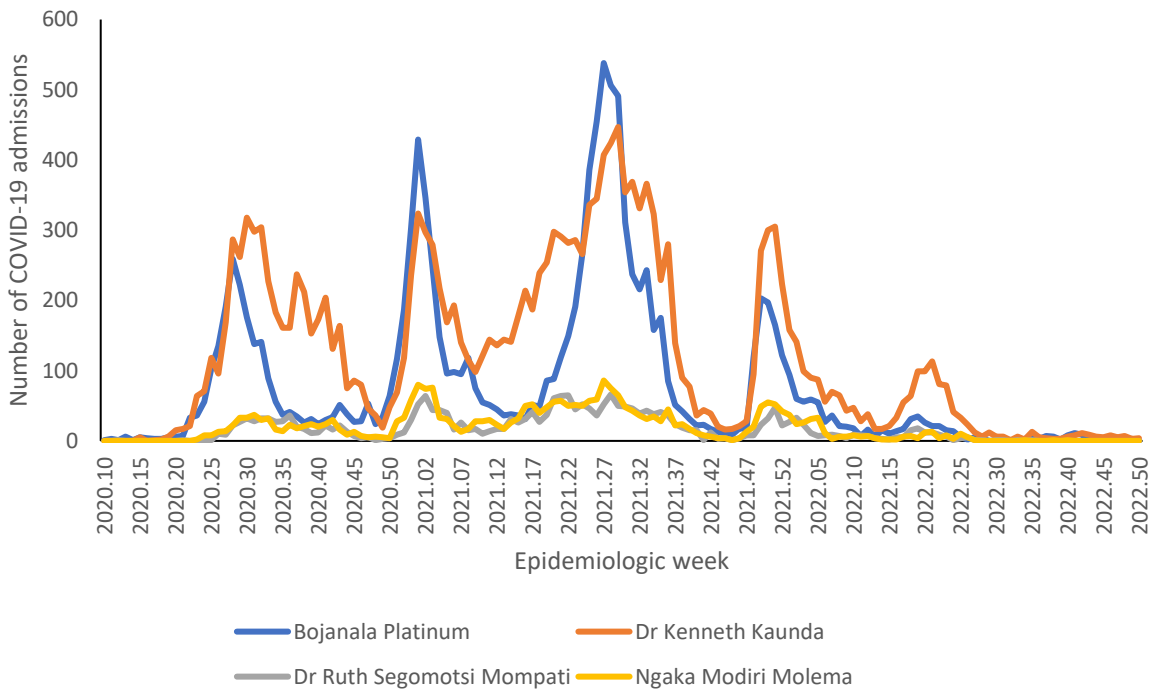


Figure 33: Number of reported COVID-19 admissions, by district and epidemiologic week, North West, 5 March 2020-17 December 2022, N=34,360

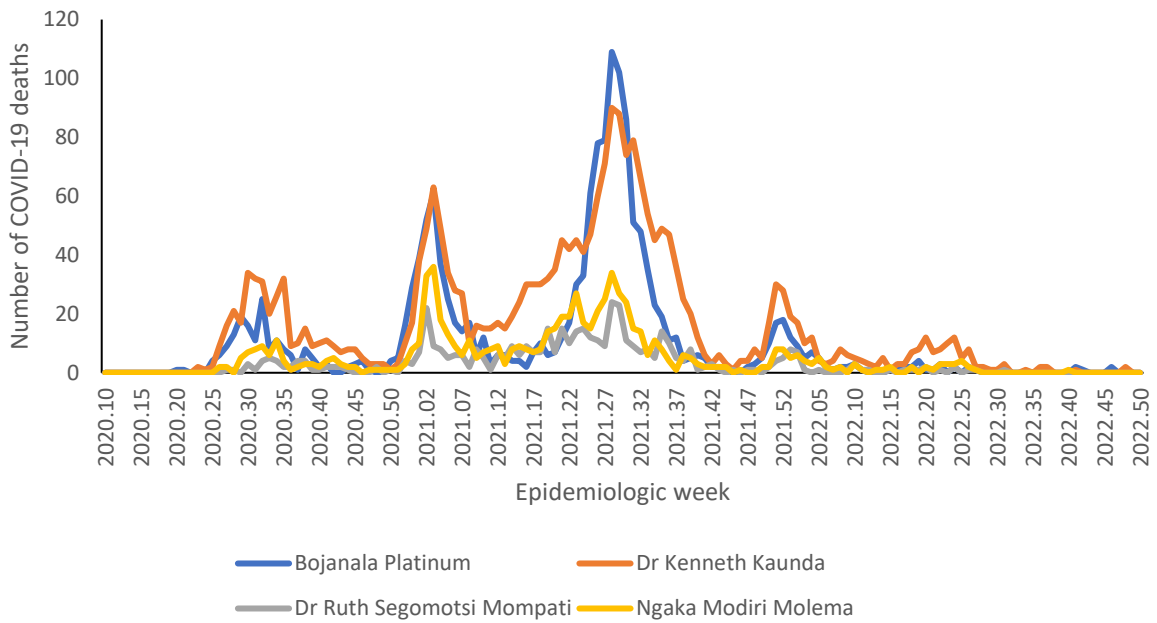


Figure 34: Number of reported COVID-19 in-hospital deaths, by district and epidemiologic week, North West, 5 March 2020-17 December 2022, N=5,022

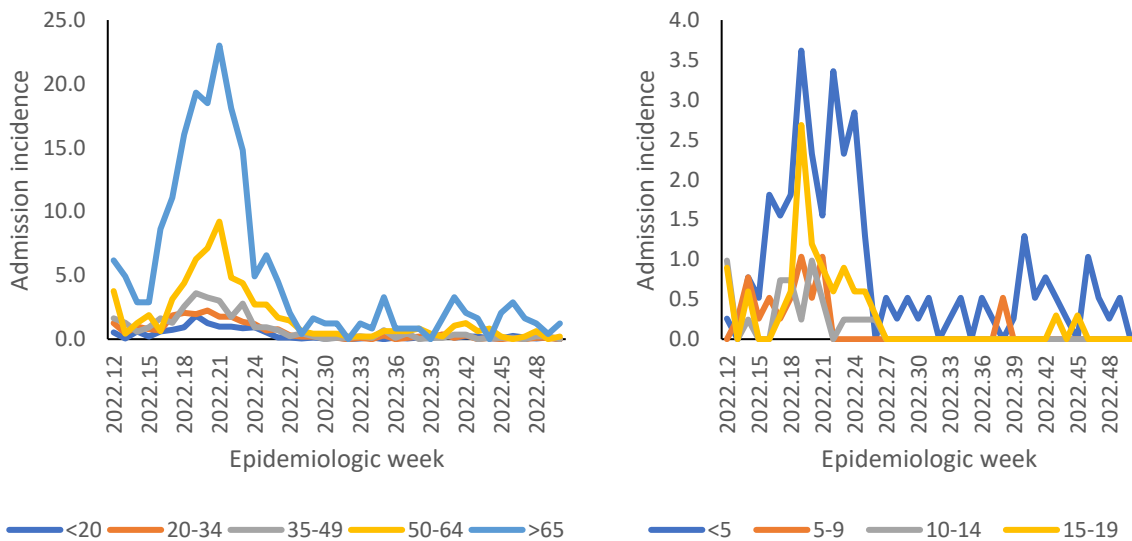


Figure 35: Incidence risk of COVID-19 admissions per 100,000 persons, by age group and epidemiologic week of diagnosis, North West, 19 March 2022-17 December 2022



Table 11: Previous 14 days and current 14 days average COVID-19 admissions and deaths and percentage changes, North West, 19 November-17 December 2022.

District	Previous 14 days admissions average	Current 14 days admissions average	Percentage change in admissions	Previous 14 days deaths average	Current 14 days deaths average	Percentage change in deaths
Bojanala Platinum	0.36	0.21	-40.00	0.00	0.00	0.00
Dr Kenneth Kaunda	0.86	0.50	-41.67	0.14	0.00	-100.00
Dr Ruth Segomotsi Mompoti	0.00	0.00	0.00	0.00	0.00	0.00
Ngaka Modiri Molema	0.00	0.00	0.00	0.00	0.00	0.00



Northern Cape

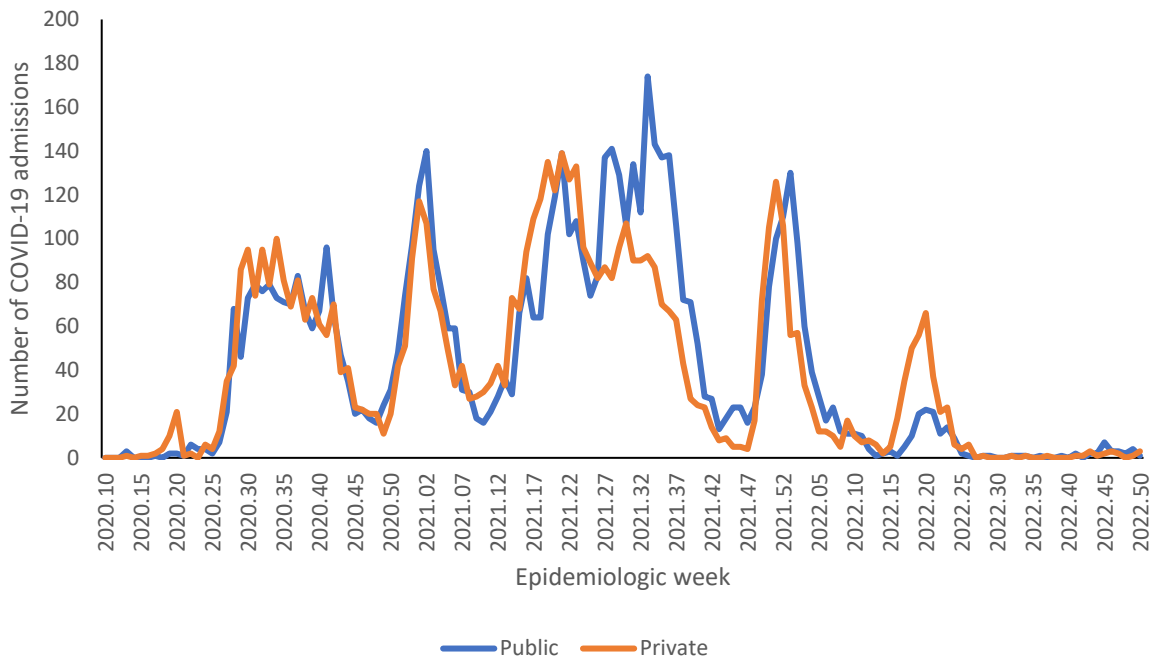


Figure 36: Number of reported COVID-19 admissions by health sector and epidemiologic week of diagnosis, Northern Cape, 5 March 2020-17 December 2022, N=11,962

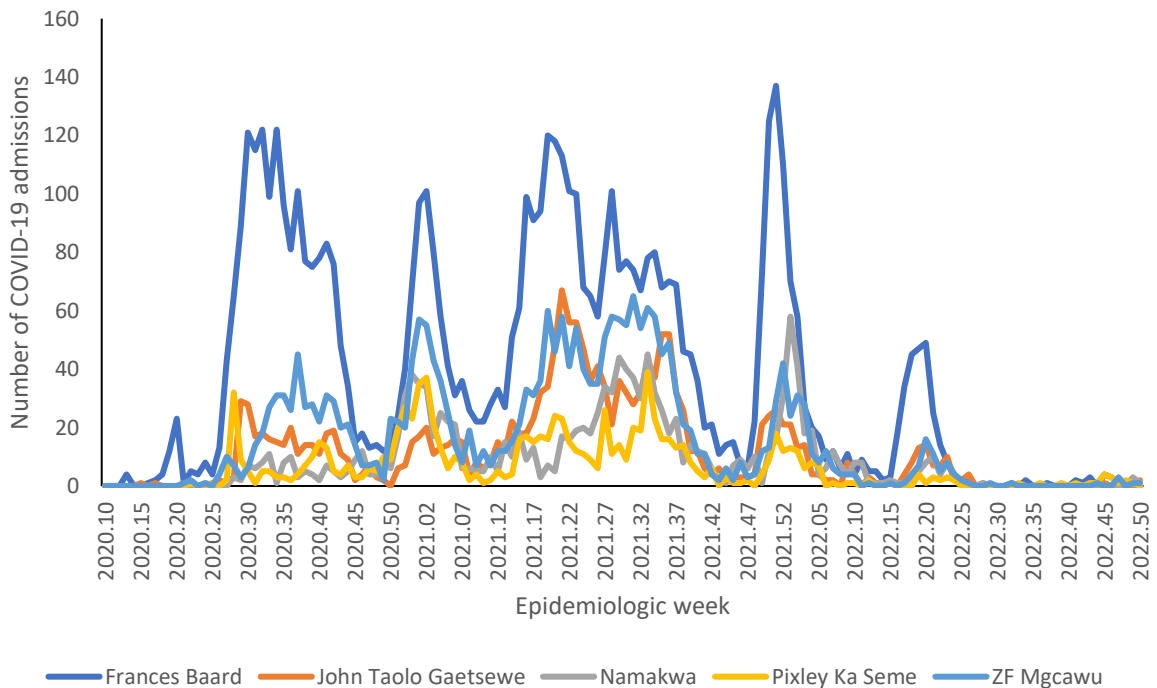


Figure 37: Number of reported COVID-19 admissions by district and epidemiologic week, Northern Cape, 5 March 2020-17 December 2022, N=11,962

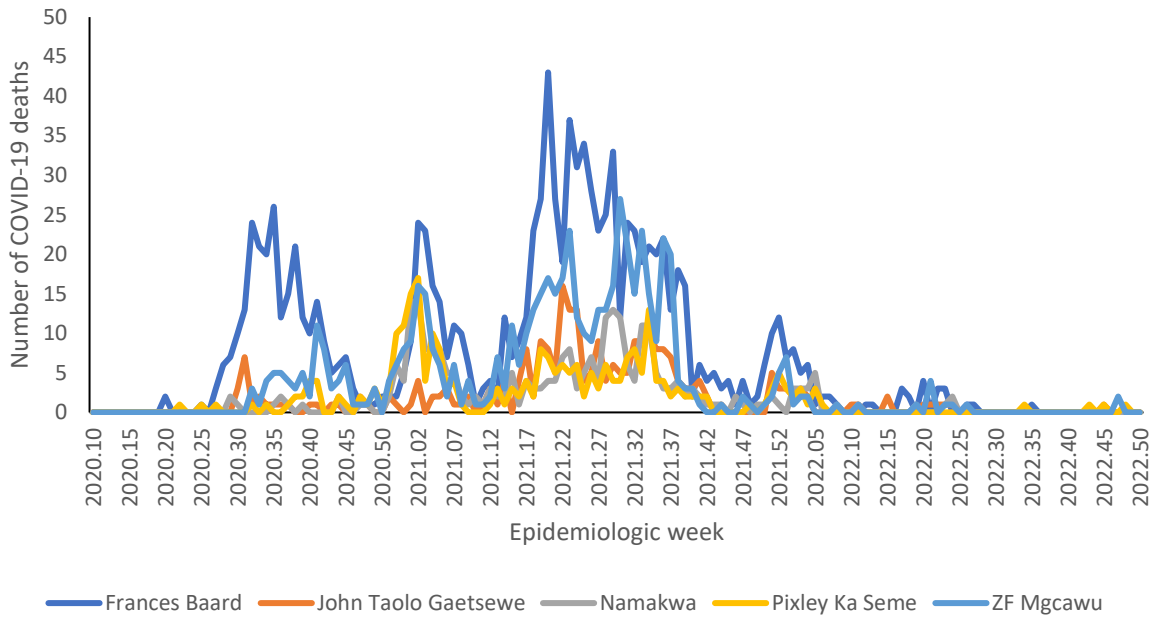


Figure 38: Number of reported COVID-19 in-hospital deaths, by district and epidemiologic week, Northern Cape, 5 March 2020-17 December 2022, N=2,464

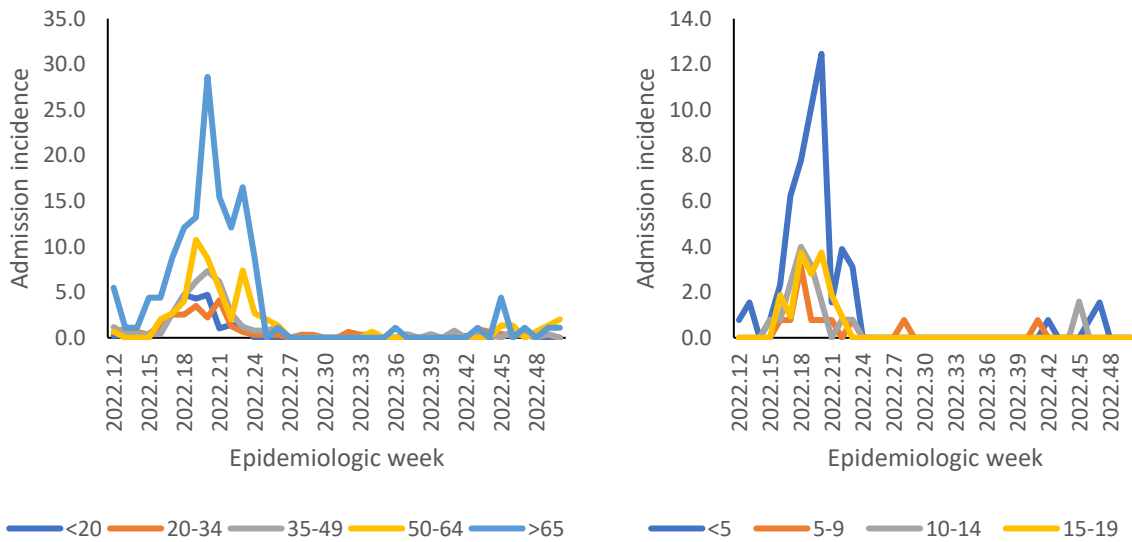


Figure 39: Incidence risk of COVID-19 admissions per 100,000 persons, by age group and epidemiologic week of diagnosis, Northern Cape, 19 March 2022- 17 December 2022



Table 12: Previous 14 days and current 14 days average COVID-19 admissions and deaths and percentage changes, Northern Cape, 19 November-17 December 2022.

District	Previous 14 days admissions average	Current 14 days admissions average	Percentage change in admissions	Previous 14 days deaths average	Current 14 days deaths average	Percentage change in deaths
Frances Baard	0.07	0.00	-100.00	0.00	0.00	0.00
John Taolo Gaetsewe	0.00	0.14	0.00	0.00	0.00	0.00
Namakwa	0.00	0.29	0.00	0.00	0.00	0.00
Pixley Ka Seme	0.21	0.07	-66.67	0.07	0.00	-100.00
ZF Mgcawu	0.21	0.14	-33.33	0.14	0.00	-100.00

Western Cape

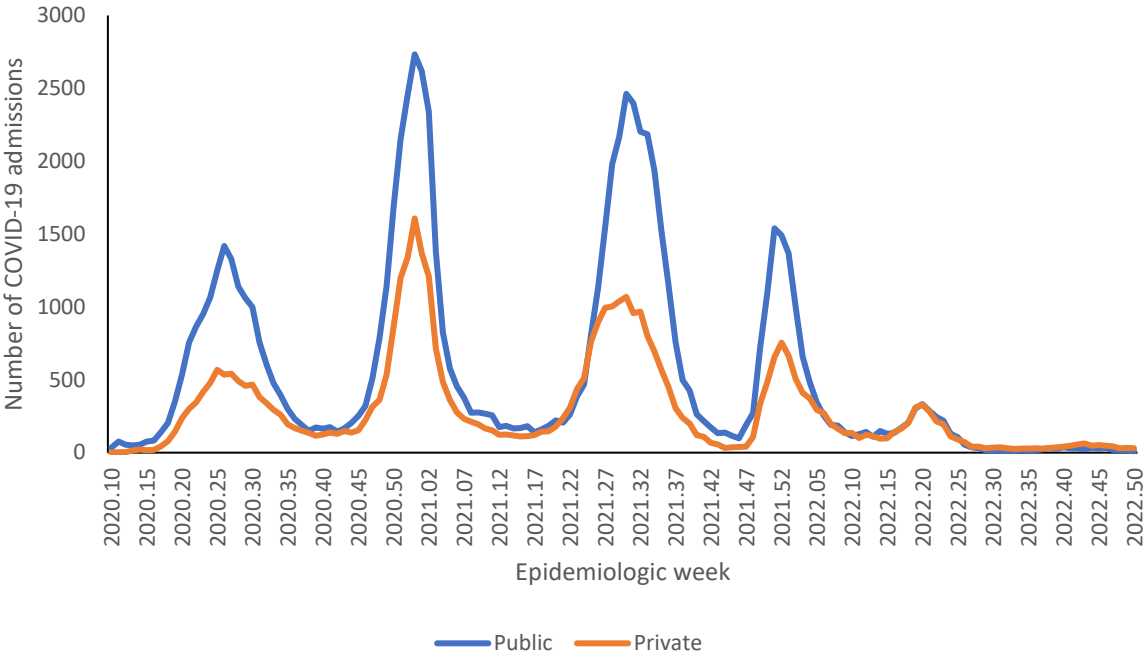


Figure 40: Number of reported COVID-19 admissions by health sector and epidemiologic week of diagnosis, Western Cape, 5 March 2020-17 December 2022, N=121,920

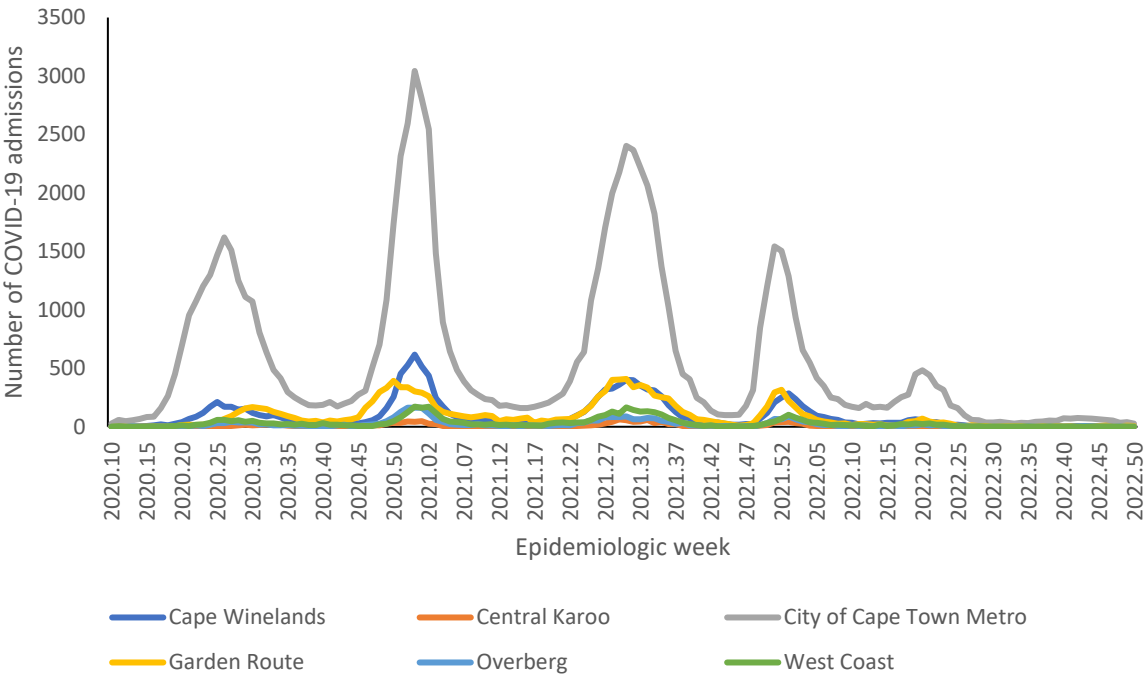


Figure 41: Number of reported COVID-19 admissions, by district and epidemiologic week, Western Cape, 5 March 2020-17 December 2022, N=121,920

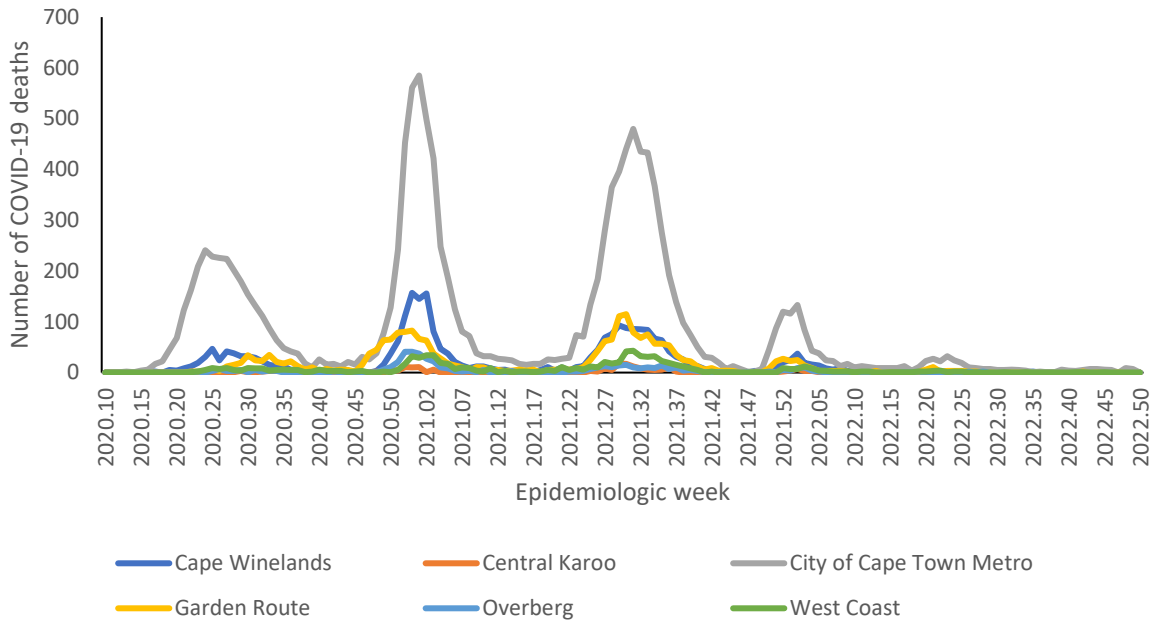


Figure 42: Number of reported COVID-19 in-hospital deaths, by district and epidemiologic week, Western Cape, 5 March 2020-17 December 2022, N=18,977

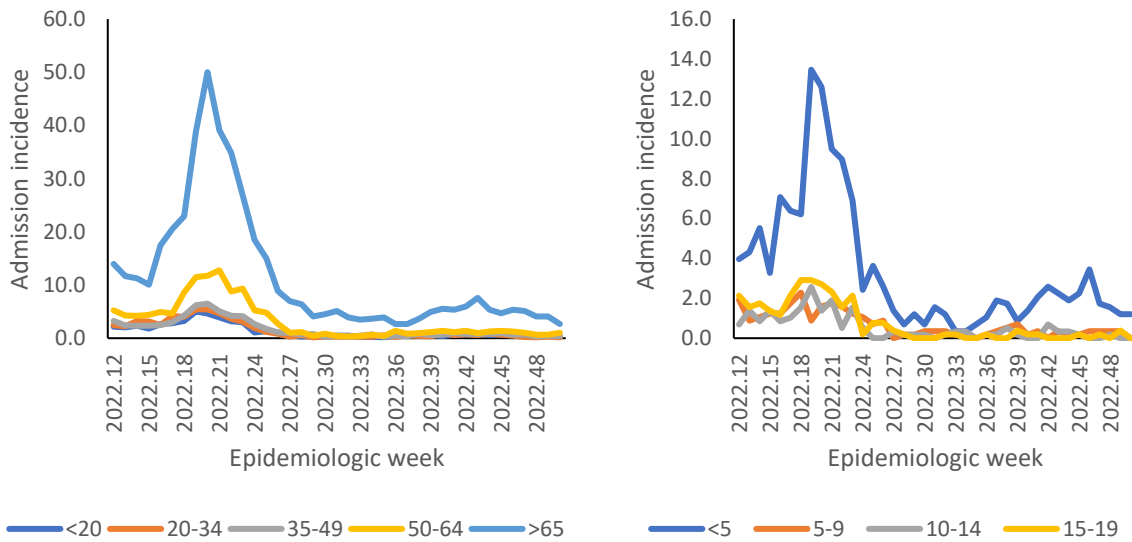


Figure 43: Incidence risk of COVID-19 admissions per 100,000 persons, by age group and epidemiological week of diagnosis, Western Cape, 19 March 2022- 17 December 2022



Table 13: Previous 14 days and current 14 days average COVID-19 admissions and deaths and percentage changes, Western Cape, 19 November-17 December 2022.

District	Previous 14 days admissions average	Current 14 days admissions average	Percentage change in admissions	Previous 14 days deaths average	Current 14 days deaths average	Percentage change in deaths
Cape Winelands	0.57	0.29	-50.00	0.07	0.07	0.00
Central Karoo	0.00	0.00	0.00	0.00	0.00	0.00
City of Cape Town Metro	6.29	4.71	-25.00	0.64	0.50	-22.22
Garden Route	0.43	1.21	183.33	0.07	0.00	-100.00
Overberg	0.50	0.14	-71.43	0.00	0.00	0.00
West Coast	0.00	0.00	0.00	0.00	0.00	0.00

Limitation

DATCOV now includes reporting from all hospitals with COVID-19 admissions, but many hospitals are yet to reach complete submission of historic data. Data quality in a surveillance system is dependent on the information submitted by healthcare institutions. It is not possible for the NICD to verify or check the quality of all these data, however, the NICD has built-in data quality checks. Delays in reporting of admissions and deaths may affect the numbers reported in the most recent week. The National Department of Health have recruited data capturers to support hospitals to improve data submission.

As hospitals reached capacity, admission criteria may change and therefore influence trends and inferences about the progression of the epidemic. DATCOV only reports hospital-based admissions and deaths and therefore does not include deaths occurring outside hospitals. DATCOV now has a module to record out-of-hospital deaths.

Severity data has some inherent limitations. We rely on a proxy indicator for severity and do not have clinical or laboratory parameters to ascertain clinical severity. In the early and late phases of the wave there is likely to be lower severity due to there being sufficient hospital capacity. It may take a few weeks for hospitalisation outcomes to accumulate. Early reporting on case fatality ratio is also biased particularly in older adults who may have longer admissions and are more likely to die.

Acknowledgements

All public and private sector hospitals submitting data to DATCOV

Private hospital groups submitting data to DATCOV:

- Netcare
- Life Healthcare
- Mediclinic Southern Africa
- National Hospital Network (NHN)
- Clinix Health Group
- Lenmed
- Joint Medical Holdings (JMH)

Appendix

Table 14: Percentage incidence change in hospital admissions over 14 days, by district, South Africa, 4 December 2022-17 December 2022.

Province	District	Total admissions	Incidence (per 100k)	New admissions	New admissions incidence (per 100k)	% Average change (14 days)
Eastern Cape	Alfred Nzo	2791	338.50	0	0.00	-100.00
	Amathole	3321	424.38	0	0.00	0.00
	Buffalo City Metro	10710	1353.14	0	0.00	-100.00
	Chris Hani	5358	751.94	0	0.00	-100.00
	Joe Gqabi	1223	356.65	0	0.00	0.00
	Nelson Mandela Bay Metro	17087	1416.36	6	0.50	-45.45
	O R Tambo	5078	331.12	0	0.00	-100.00
	Sarah Baartman	3428	710.37	0	0.00	0.00
Free State	Fezile Dabi	3866	755.74	1	0.20	100.00
	Lejweleputswa	6792	1039.83	1	0.15	-75.00
	Mangaung Metro	15553	1774.69	8	0.91	0.00
	Thabo Mofutsanyana	5869	767.91	0	0.00	0.00
	Xhariep	739	581.69	0	0.00	0.00
Gauteng	City of Johannesburg Metro	57376	954.17	12	0.20	-60.00
	City of Tshwane Metro	45254	1184.55	10	0.26	-69.70
	Ekurhuleni Metro	34778	859.48	4	0.10	-60.00
	Sedibeng	10328	1060.35	3	0.31	-62.50
	West Rand	13994	1463.18	3	0.31	-40.00
KwaZulu-Natal	Amajuba	4758	839.15	0	0.00	-100.00
	eThekweni Metro	41767	1041.68	27	0.67	-41.30
	Harry Gwala	2836	560.33	0	0.00	0.00
	iLembe	3100	445.58	1	0.14	-75.00
	King Cetshwayo	9877	1035.18	2	0.21	-60.00
	Ugu	6013	747.47	8	0.99	0.00
	uMgungundlovu	12086	1060.26	5	0.44	-58.33
	uMkhanyakude	1528	222.10	1	0.15	100.00
	Umzinyathi	2436	431.85	1	0.18	-50.00
UThukela	3384	483.17	0	0.00	-100.00	



	Zululand	2551	288.52	0	0.00	0.00
Limpopo	Capricorn	8785	662.05	1	0.08	100.00
	Mopani	3841	319.37	0	0.00	-100.00
	Sekhukhune	2162	177.70	0	0.00	0.00
	Vhembe	3095	216.38	0	0.00	-100.00
	Waterberg	3391	452.04	1	0.13	100.00
Mpumalanga	Ehlanzeni	8225	449.85	4	0.22	0.00
	Gert Sibande	7875	621.12	0	0.00	-100.00
	Nkangala	7089	430.34	1	0.06	-83.33
North West	Bojanala Platinum	11455	587.99	0	0.00	-100.00
	Dr Kenneth Kaunda	17666	2199.18	4	0.50	33.33
	Dr Ruth Segomotsi Mompati	2391	512.52	0	0.00	0.00
	Ngaka Modiri Molema	2813	310.88	0	0.00	0.00
Northern Cape	Frances Baard	5611	1348.90	0	0.00	0.00
	John Taolo Gaetsewe	1704	616.59	2	0.72	200.00
	Namakwa	1354	1157.35	1	0.85	-66.67
	Pixley Ka Seme	948	450.54	0	0.00	-100.00
	ZF Mgcawu	2335	824.18	1	0.35	0.00
Western Cape	Cape Winelands	13667	1429.88	3	0.31	200.00
	Central Karoo	1403	1851.12	0	0.00	0.00
	City of Cape Town Metro	85379	1824.77	27	0.58	-30.77
	Garden Route	13421	2136.27	8	1.27	-11.11
	Overberg	3361	1100.06	1	0.33	0.00
	West Coast	4591	977.86	0	0.00	0.00

Table 15: Number of reported COVID-19 admissions and in-hospital deaths by age and gender, South Africa, 5 March 2020-17 December 2022.

Age Group (Years)	ADMISSIONS				DEATHS			
	Female	Male	Unknown	Total	Female	Male	Unknown	Total
0-4	7790	9927	55	17772	187	219	4	410
5-9	2131	2834	8	4973	31	40	0	71
10-14	2780	2884	12	5676	70	71	1	142
15-19	7408	4187	6	11601	164	140	0	304
20-24	11447	5789	10	17246	367	282	1	650
25-29	18063	8181	11	26255	786	538	0	1324
30-34	23138	12875	16	36029	1325	1136	2	2463
35-39	23635	16829	22	40486	1883	1786	4	3673
40-44	20844	18486	18	39348	2298	2381	1	4680
45-49	22934	22414	12	45360	3238	3461	1	6700
50-54	26444	24747	10	51201	4409	4591	2	9002
55-59	29322	26774	16	56112	6219	6258	5	12482
60-64	26225	23956	16	50197	6701	6918	6	13625
65-69	22675	20261	19	42955	6962	6525	6	13493
70-74	19543	17265	19	36827	6199	6065	4	12268
75-79	14936	12411	9	27356	4955	4655	3	9613
80-84	11496	8244	8	19748	4072	3203	3	7278
85-89	6368	3987	2	10357	2309	1693	0	4002
90-94	2796	1432	1	4229	1130	672	0	1802
>=95	845	399	3	1247	373	169	0	542
Unknown	804	618	46	1468	46	44	0	90
Total	301624	244500	319	546443	53724	50847	43	104614