



# NATIONAL INSTITUTE FOR COMMUNICABLE DISEASES

Division of the National Health Laboratory Service

## Weekly respiratory pathogens report

### Week 14 of 2023

#### Highlights

- In 2023 to date, 422 respiratory syncytial virus (RSV) cases have been detected from all surveillance programmes. The RSV season started in week 6 when the detection rate among children aged <5 years in pneumonia surveillance crossed and remained above the seasonal threshold. Transmission levels among children aged < 5 years in pneumonia surveillance reached very high level of activity in week 12. Although the detection rate declined in week 14 to a low level of activity, it should be noted that there are delays in the testing of week 14 specimens due to public holidays in this period.
- In 2023 to date, 30 influenza cases have been detected from all surveillance programmes, of which 60% (18/30) with typing information available were influenza A(H3N2). The majority of cases were reported from Gauteng (n=14), followed by Western Cape (n=11) and Eastern Cape (n=4) and KwaZulu-Natal (n=1) sentinel surveillance sites.
- In 2023 to date, 72 cases of *Bordetella pertussis* were detected, of which 22% (16/72) were from Western Cape, 21% (15/72) from North West, and 19% (14/72) from KwaZulu-Natal and Mpumalanga province surveillance sites. Eleven and two cases were detected from Gauteng and Eastern Cape province surveillance sites, respectively.
- In 2023 to date, 135 COVID-19 cases were detected from all surveillance programmes. Of the 65 hospitalised COVID-19 cases reported with available data on outcome, 2% (1/65) died.
- Of the 74 specimens sequenced, variant could be assigned in 47% (35/74). Of these, 97% (34/35) was assigned Omicron variant, of which 32% (11/34) was Omicron (22E/BQ.1.1), 29% (10/34) Omicron (23A/XBB.1.5), 26% (9/34) Omicron (22B/BA.5), 1% (1/34) Omicron (22D/BM.1.1), and 1% (1/34) Omicron(22F/BA.2.10.1). One (1%, 1/74) was assigned XAY and for the remaining 53% (39/74) a variant could not be assigned due to a low viral load or insufficient sample.

## Programme Descriptions

Programme	Influenza-like illness (ILI)	Viral Watch	National syndromic surveillance for pneumonia
<b>Start year</b>	2012	1984	2009
<b>Provinces*</b>	KZ NW WC MP	EC FS GP LP MP NC NW WC	EC GP KZ MP NW WC
<b>Type of site</b>	Primary health care clinics	General practitioners	Public hospitals
<b>Case definition</b>	<p><b>ILI:</b> An acute respiratory illness with a temperature (<math>\geq 38^{\circ}\text{C}</math>) and cough, &amp; onset <math>\leq 10</math> days</p> <p><b>Suspected pertussis</b> Any person with an acute cough illness lasting <math>\geq 14</math> days (or cough illness of any duration for children <math>&lt; 1</math> year), without a more likely diagnosis AND one or more of the following signs or symptoms:</p> <ul style="list-style-type: none"> <li>• paroxysms of coughing,</li> <li>• or inspiratory "whoop",</li> <li>• or post-tussive vomiting</li> <li>• or apnoea in children <math>&lt; 1</math> year;</li> </ul> <p>OR</p> <p>Any person in whom a clinician suspects pertussis</p> <p><b>Suspected SARS-CoV-2</b> Any person presenting with an acute (<math>\leq 14</math> days) respiratory tract infection or other clinical illness compatible with COVID-19**</p>	<p><b>ILI:</b> An acute respiratory illness with a temperature (<math>\geq 38^{\circ}\text{C}</math>) and cough, &amp; onset <math>\leq 10</math> days</p> <p><b>Suspected SARS-CoV-2</b> Any person presenting with an acute (<math>\leq 14</math> days) respiratory tract infection or other clinical illness compatible with COVID-19**</p>	<p><b>SRI:</b> Acute (symptom onset <math>\leq 10</math> days) or chronic (symptom onset <math>&gt; 10</math>) lower respiratory tract infection</p> <p><b>Suspected pertussis</b> Any person with an acute cough illness lasting <math>\geq 14</math> days (or cough illness of any duration for children <math>&lt; 1</math> year), without a more likely diagnosis AND one or more of the following signs or symptoms:</p> <ul style="list-style-type: none"> <li>• paroxysms of coughing,</li> <li>• or inspiratory "whoop",</li> <li>• or post-tussive vomiting</li> <li>• or apnoea in children <math>&lt; 1</math> year;</li> </ul> <p>OR</p> <p>Any person in whom a clinician suspects pertussis.</p> <p><b>Suspected SARS-CoV-2</b> Any person admitted with a physician-diagnosis of suspected COVID-19 and not meeting SRI case definition.</p>
<b>Specimens collected</b>	Oropharyngeal & nasopharyngeal swabs	Throat and/or nasal swabs or Nasopharyngeal swabs	Oropharyngeal & nasopharyngeal swabs
<b>Main pathogens tested***</b>	INF RSV BP SARS-CoV-2	INF RSV BP SARS-CoV-2	INF RSV BP SARS-CoV-2
<b>Testing Methods</b>	<p><b>INF and RSV</b> - Fast-Track Diagnostics multiplex real-time reverse transcription polymerase chain reaction (until 31 March 2021)</p> <p><b>B. pertussis</b> Multiplex real-time PCR (Tatti <i>et al.</i>, <i>J Clin Microbiol</i> 2011) and culture (if PCR cycle threshold <math>\leq 25</math>)</p> <p><b>SARS-CoV-2</b> 1 April 2020 – 31 March 2021: Roche E gene real-time PCR assay (Corman <i>et al.</i>, <i>Euro Surv</i> 2020) 1 April 2021 to date: Allplex™ SARS-CoV-2/FluA/FluB/RSV PCR kit</p> <p>- positivity assigned if PCR cycle threshold is <math>&lt; 40</math> for <math>\geq 1</math> gene targets (N, S, OR RdRp)</p>	<p><b>INF and RSV</b> - Fast-Track Diagnostics multiplex real-time reverse transcription polymerase chain reaction (until 31 March 2021)</p> <p><b>B. pertussis</b> Multiplex real-time PCR (Tatti <i>et al.</i>, <i>J Clin Microbiol</i> 2011) and culture (if PCR cycle threshold <math>\leq 25</math>)</p> <p><b>SARS-CoV-2</b> 1 April 2020 – 31 March 2021: Roche E gene real-time PCR assay Corman <i>et al.</i>, <i>Euro Surv</i> 2020) 1 April 2021 to date: Allplex™ SARS-CoV-2/FluA/FluB/RSV PCR kit</p> <p>- positivity assigned if PCR cycle threshold is <math>&lt; 40</math> for <math>\geq 1</math> gene targets (N, S, OR RdRp)</p>	<p><b>INF and RSV</b> - Fast Track Diagnostics multiplex real-time reverse transcription polymerase chain reaction (until 31 March 2021)</p> <p><b>B. pertussis</b> Multiplex real-time PCR (Tatti <i>et al.</i>, <i>J Clin Microbiol</i> 2011) and culture (if PCR cycle threshold <math>\leq 25</math>)</p> <p><b>SARS-CoV-2</b> 1 April 2020 – 31 March 2021: Roche E gene real-time PCR assay (Corman <i>et al.</i>, <i>Euro Surv</i> 2020) 1 April 2021 to date: Allplex™ SARS-CoV-2/FluA/FluB/RSV PCR kit</p> <p>- positivity assigned if PCR cycle threshold is <math>&lt; 40</math> for <math>\geq 1</math> gene targets (N, S, OR RdRp)</p>

### Epidemic Threshold

Thresholds are calculated using the Moving Epidemic Method (MEM), a sequential analysis using the R Language, available from: <http://CRAN.R-project.org/web/package=mem> designed to calculate the duration, start and end of the annual influenza epidemic. MEM uses the 40th, 90th and 97.5th percentiles established from available years of historical data to calculate thresholds of activity. Thresholds of activity for influenza and RSV are defined as follows: Below seasonal threshold, Low activity, Moderate activity, High activity, Very high activity. For influenza, thresholds from outpatient influenza like illness (ILI in primary health care clinics) are used as an indicator of disease transmission in the community and thresholds from pneumonia surveillance are used as an indicator of impact of disease. For RSV, thresholds from pneumonia surveillance, using data from children aged  $< 5$  years are used to define the start and end of the season.

\* EC: Eastern Cape; FS: Free State; GP: Gauteng; KZ: KwaZulu-Natal; LP: Limpopo; MP: Mpumalanga; NC: Northern Cape; NW: North West; WC: Western Cape

\*\*Symptoms include ANY of the following respiratory symptoms: cough, sore throat, shortness of breath, anosmia (loss of sense of smell) or dysgeusia (alteration of the sense of taste), with or without other symptoms (which may include fever, weakness, myalgia, or diarrhoea). Testing for SARS-CoV-2 was initiated in all three surveillance programmes in week 10 of 2020 (week starting 2 March 2020).\*\*\*INF: influenza virus; RSV: respiratory syncytial virus; BP: *Bordetella pertussis*; SARS-CoV-2: severe acute respiratory syndrome coronavirus 2

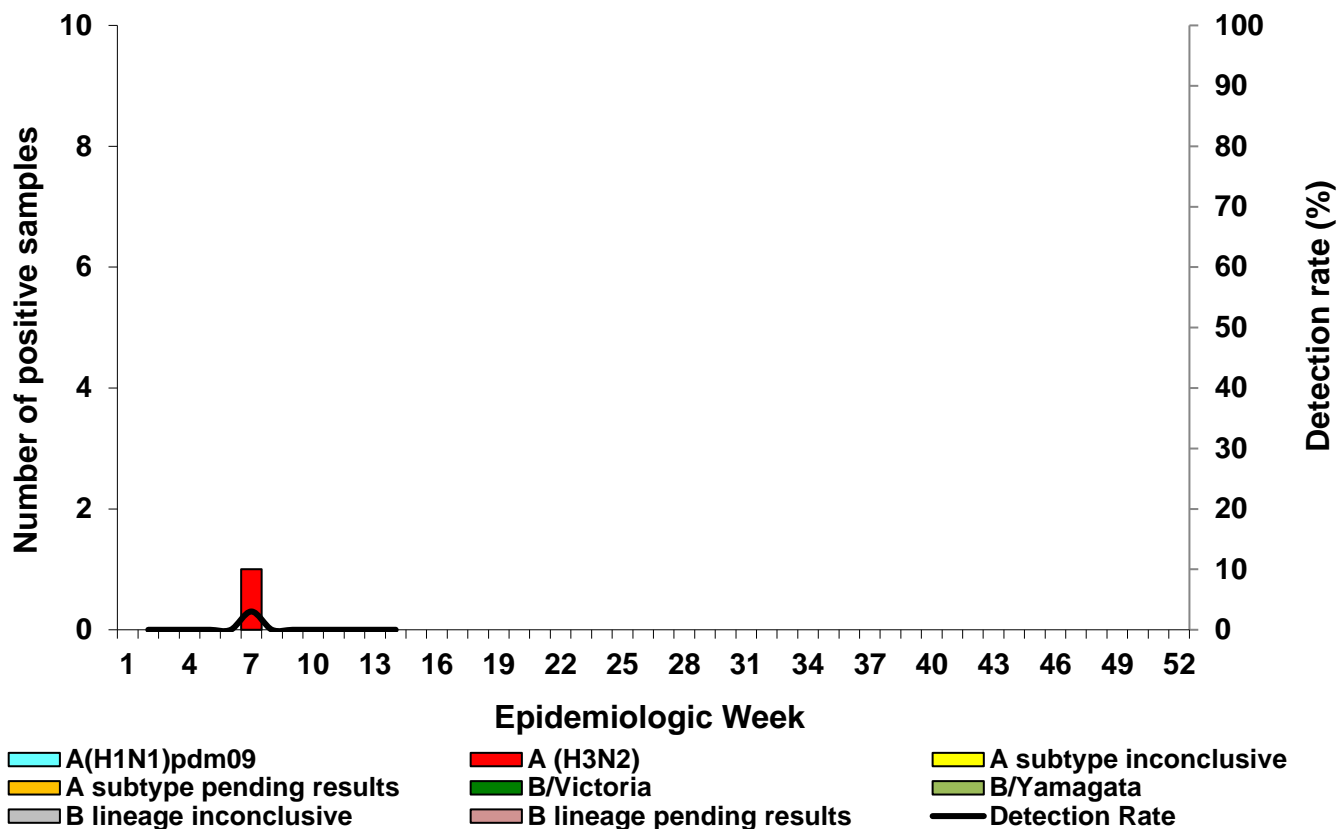


Figure 1. Number of influenza positive cases\* by influenza subtype and lineage\*\* and detection rate\*\*\* by week, influenza-like illness (ILI) surveillance in primary health care clinics, 01/01/2023 –09/04/2023

\*Specimens from patients with influenza-like illnesses at 5 sentinel sites in 4 provinces

\*\* Influenza was not detected in 9 specimens from patients who met suspected SARS-CoV-2 or *B. pertussis* case definition but did not meet influenza-like illness (ILI) case definition.

\*\*\*Only reported for weeks with >10 specimens submitted

Inconclusive: insufficient viral load in sample and unable to characterise further

Table 1. Number of laboratory-confirmed influenza\* cases by subtype and lineage and total number of samples tested by clinic and province, influenza-like illness (ILI) surveillance in primary health care clinics, 01/01/2023 – 09/04/2023

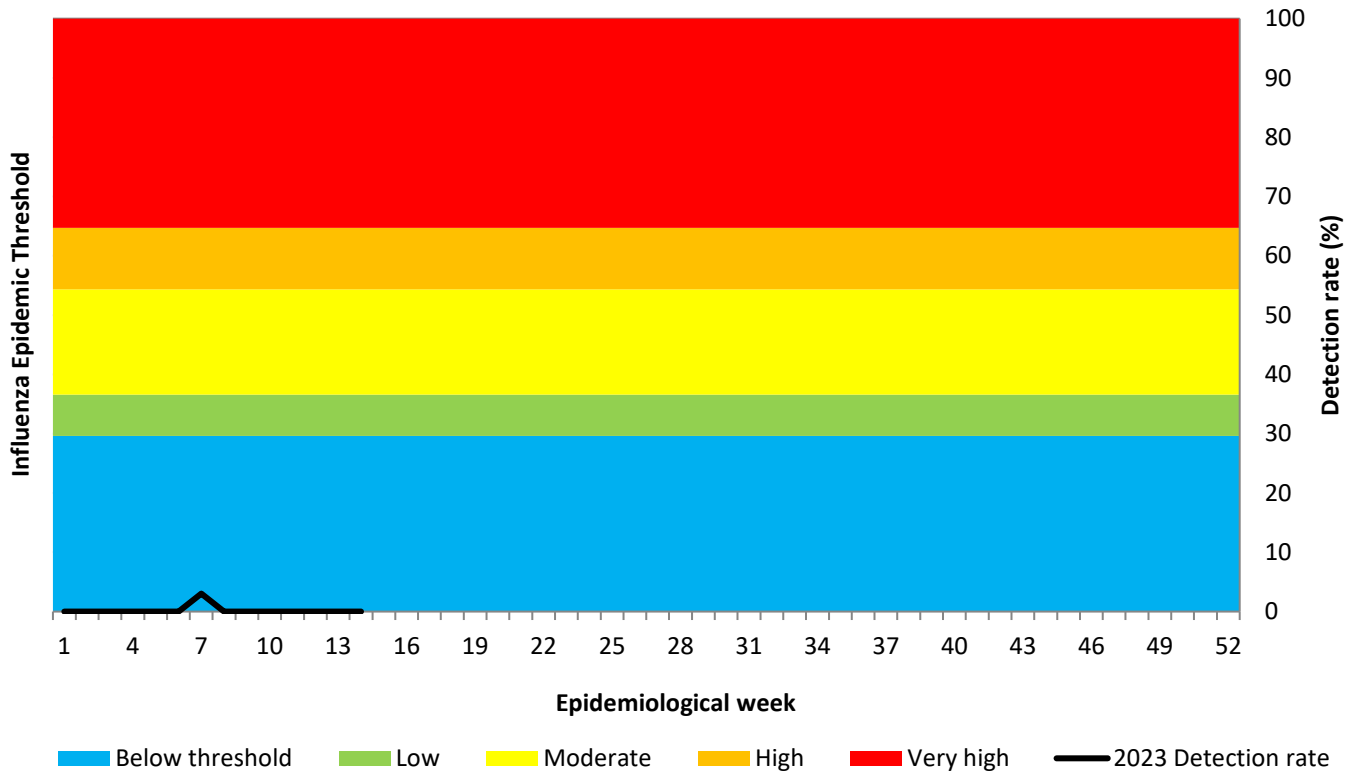
Clinic (Province)	A(H1N1) pdm09	A(H3N2)	A subtype inconclusive*	A subtype pending results**	B/Victoria	B/Yamagata	B lineage inconclusive*	B lineage pending results**	Total samples
Agincourt (MP)	0	0	0	0	0	0	0	0	54
Eastridge (WC)	0	1	0	0	0	0	0	0	104
Edendale Gateway (KZ)	0	0	0	0	0	0	0	0	134
Jouberton (NW)	0	0	0	0	0	0	0	0	65
Mitchell's Plain (WC)	0	0	0	0	0	0	0	0	37
<b>Total:</b>	<b>0</b>	<b>1</b>	<b>0</b>	<b>0</b>	<b>0</b>	<b>0</b>	<b>0</b>	<b>0</b>	<b>394</b>

KZ: KwaZulu-Natal; NW: North West; WC: Western Cape; MP: Mpumalanga

\* Influenza was not detected in 9 specimens from patients who met suspected SARS-CoV-2 or *B. pertussis* case definition but did not meet influenza-like illness (ILI) case definition.

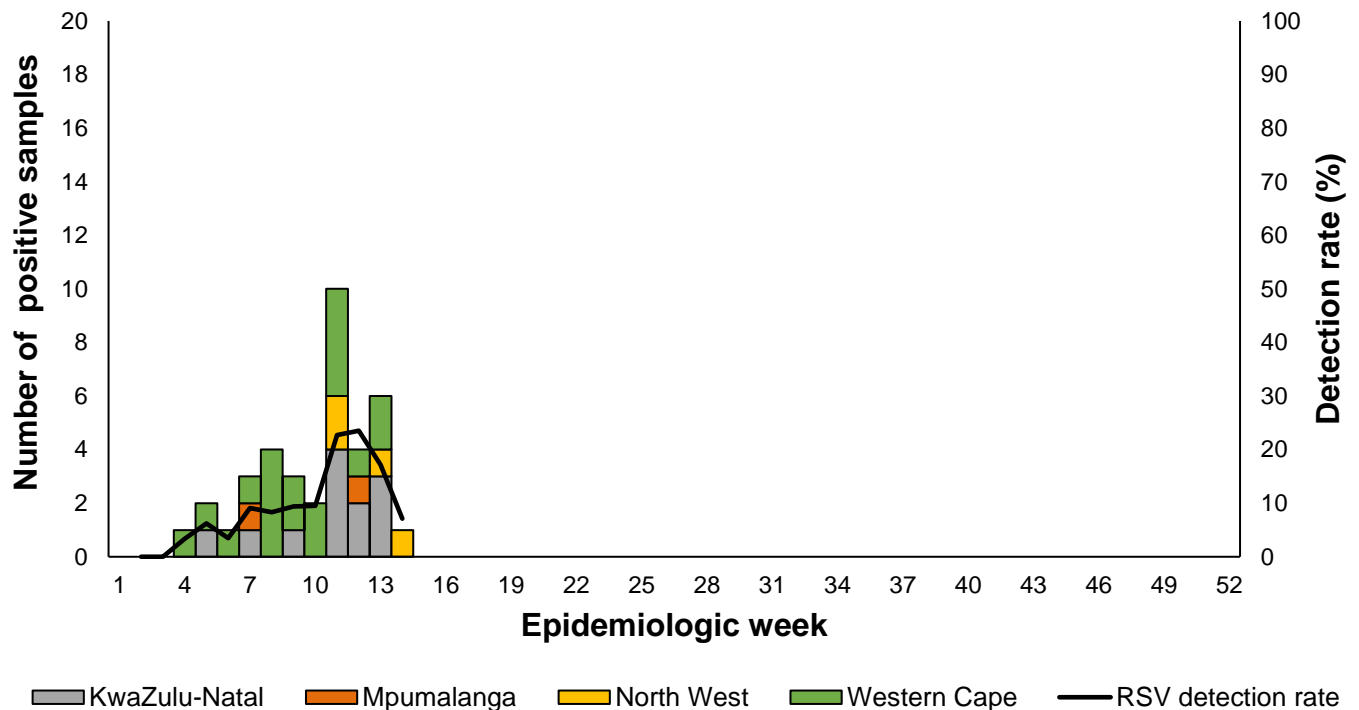
\*\*Inconclusive: insufficient viral load in sample and unable to characterise further

\*\*\*Influenza A subtype or B lineage results are pending



**Figure 2. Influenza percentage detections and epidemic thresholds\* among cases of all ages, influenza-like illness (ILI) surveillance in primary health care clinics, 01/01/2023 –09/04/2023**

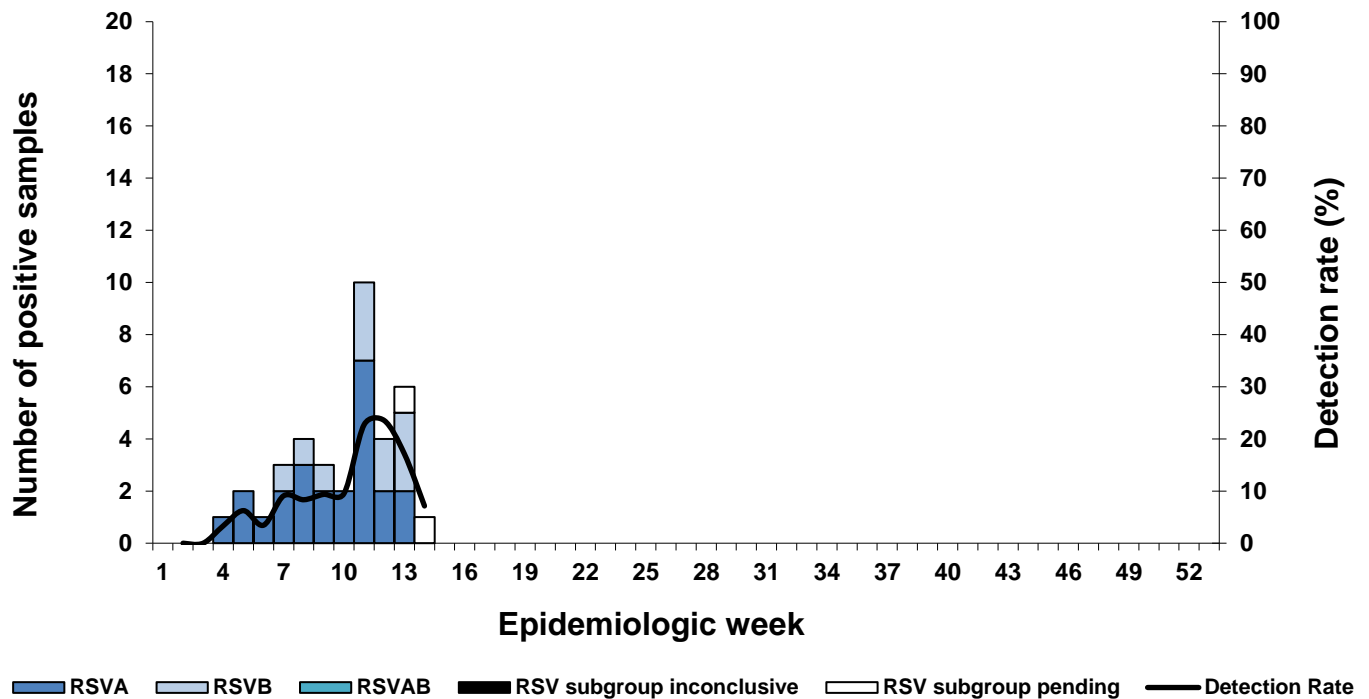
\*Thresholds based on 2012-2019 data



**Figure 3. Number of patients testing positive for respiratory syncytial virus\* by province and detection rate by week, influenza-like illness (ILI) surveillance in primary health care clinics, 01/01/2023 –09/04/2023**

\*RSV was not detected from 9 specimens of patients who met suspected SARS-CoV-2 or *B. pertussis* case definition but did not meet influenza-like illness (ILI) case definition.

\*\*Only reported for weeks with >10 specimens submitted



**Figure 4. Number of patients testing positive for respiratory syncytial virus\* by subgroup and detection rate by week, influenza-like illness (ILI) surveillance in primary health care clinics, 01/01/2023 –09/04/2023**

\*RSV was not detected from 9 specimens of patients who met suspected SARS-CoV-2 or *B. pertussis* case definition but did not meet influenza-like illness (ILI) case definition.

\*\*Only reported for weeks with >10 specimens submitted

RSV AB: Both RSV A and B subgroups identified.

Inconclusive: insufficient viral load in sample and unable to characterise further

**Table 2. Number of patients testing positive for respiratory syncytial virus (RSV)\* by subgroups identified and total number of samples tested by clinic and province, influenza-like illness (ILI) surveillance in primary health care clinics, 01/01/2023 –09/04/2023**

Clinic (Province)	RSVA	RSVB	RSVAB**	RSV subgroup inconclusive* **	RSV subgroup pending** **	Total samples
Agincourt (MP)	1	1	0	0	0	54
Eastridge (WC)	16	2	0	0	0	104
Edendale Gateway (KZ)	5	7	0	0	0	134
Jouberton (NW)	2	1	0	0	1	65
Mitchell's Plain (WC)	0	0	0	0	1	37
<b>Total</b>	<b>24</b>	<b>11</b>	<b>0</b>	<b>0</b>	<b>2</b>	<b>394</b>

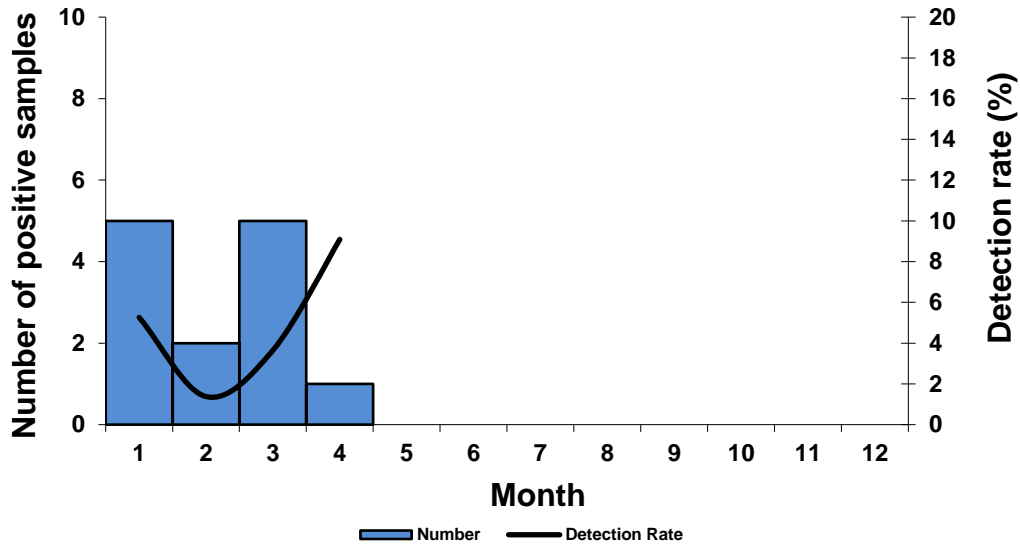
KZ: KwaZulu-Natal; NW: North West; WC: Western Cape; MP: Mpumalanga

\*RSV was not detected from 9 specimens of patients who met suspected SARS-CoV-2 or *B. pertussis* case definition but did not meet influenza-like illness (ILI) case definition.

\*\*RSV AB: Both RSV A and B subgroups identified

\*\*\*Inconclusive: insufficient viral load in sample and unable to characterise further

\*\*\*\*RSV results for subgroups are pending



**Figure 5. Number of patients testing positive for *B. pertussis*\* and detection rate by month, influenza-like illness (ILI) surveillance primary health care clinics\*\*, 01/01/2023 –09/04/2023**

\**B. pertussis* was detected in one of 9 specimens of patients who met the suspected SARS-CoV-2 or *B. pertussis* case definition but did not meet influenza-like illness (ILI) case definition. These are not included in the epidemiological curve.

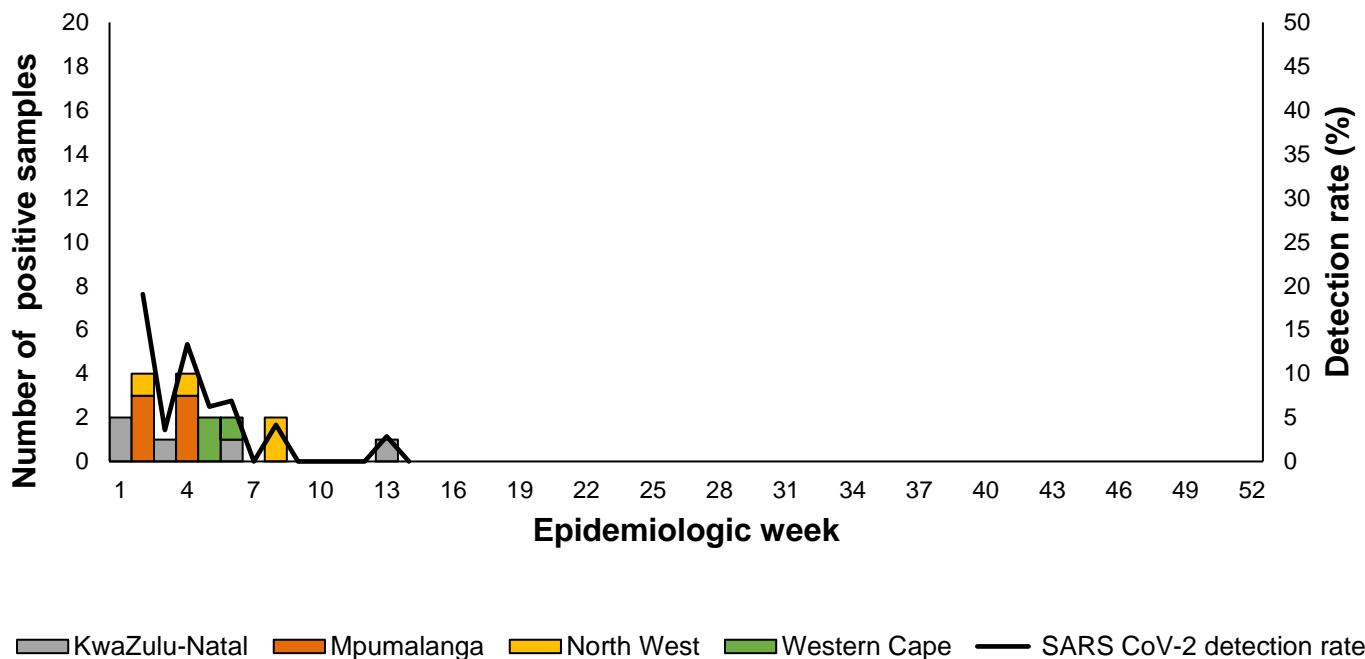
\*\* Specimens from patients with influenza-like illnesses at 5 sentinel sites in 4 provinces

**Table 3. Number of patients testing positive for *B. pertussis*\* identified and total number of samples tested by province, influenza-like illness (ILI) surveillance primary health care clinics, 01/01/2023 –09/04/2023**

Clinic (Province)	<i>B. pertussis</i> Positive	Total samples
Agincourt (MP)	4	33
Eastridge (WC)	2	55
Edendale Gateway (KZ)	4	86
Jouberton (NW)	3	34
Mitchell's Plain (WC)	0	21
<b>Total:</b>	<b>13</b>	<b>388</b>

KZ: KwaZulu-Natal; NW: North West; WC: Western Cape; MP: Mpumalanga

\**B. pertussis* was detected in one of 9 specimens of patients who met the suspected SARS-CoV-2 or *B. pertussis* case definition but did not meet influenza-like illness (ILI) case definition. These are not included in the epidemiological curve.



**Figure 6. Number of patients\* testing positive for SARS-CoV-2\*\* by province and detection rate\*\*\* by week, influenza-like illness (ILI) surveillance in primary health care clinics, 01/01/2023 –09/04/2023**

\*Specimens from patients with influenza-like illnesses at 5 sentinel sites in 4 provinces

\*\*SARS-CoV-2 was not detected in 9 specimens from patients who met suspected SARS-CoV-2 or *B. pertussis* case definition but did not meet influenza-like illness (ILI) case definition. These are not included in the epidemiological curve.

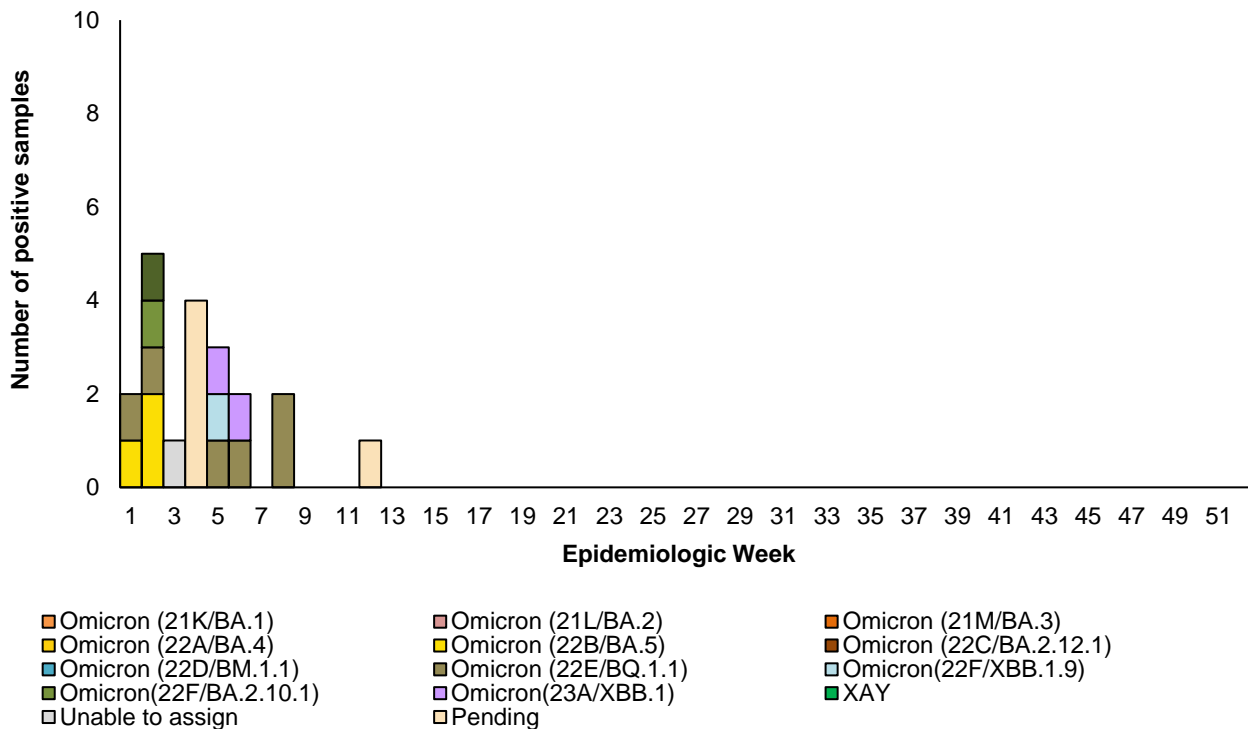
\*\*\*Only reported for weeks with >10 specimens submitted

**Table 4. Number of patients positive for SARS-CoV-2\* identified and total number of samples tested by clinic and province, influenza-like illness (ILI) surveillance primary health care clinics, 01/01/2023 –09/04/2023**

Clinic (Province)	SARS-CoV-2 positive	Total samples tested
Agincourt (MP)	6	54
Eastridge (WC)	1	104
Edendale Gateway (KZ)	5	134
Jouberton (NW)	4	65
Mitchell's Plain (WC)	2	37
<b>Total:</b>	<b>18</b>	<b>394</b>

KZ: KwaZulu-Natal; NW: North West; WCP: Western Cape; MP: Mpumalanga

\*SARS-CoV-2 was not detected in 9 specimens from patients who met suspected SARS-CoV-2 or *B. pertussis* case definition but did not meet influenza-like illness (ILI) case definition. These are not included in the epidemiological curve.



**Figure 7. Number and detection rate of laboratory-confirmed SARS-CoV-2\* cases by variant type (variant PCR/sequencing) and week, influenza-like illness (ILI) surveillance in primary health care clinics, 01/01/2023-09/04/2023**

\*Specimens are from patients with influenza-like illness at 5 sentinel sites in 4 provinces who met influenza-like illness (ILI), suspected SARS-CoV-2 or *B. pertussis* case definition

**Unable to assign:** no lineage assigned due to poor- sequence quality **OR** low viral load ( $C_t \geq 35$ ) **OR** variant PCR could not assign variant and no sequencing result  
**Pending:** outstanding variant results

**Table 5. Number of cases positive for SARS-CoV-2\* by variant\*\* (variant PCR and/or sequencing) identified and total number of samples tested by clinic and province, influenza-like illness (ILI) surveillance primary health care clinics, 01/01/2023-09/04/2023**

Province	Omicron (21K/BA.1)	Omicron (21L/BA.2)	Omicron (21M/BA.3)	Omicron (22A/BA.4)	Omicron (22B/BA.5)	Omicron (22C/BA.2.12.1)	Omicron (22D/BM.1.1)	Omicron (22E/BQ.1.1)	Omicron (22F/XBB.1.9)	Omicron (22F/XBB.1.5)	Omicron (23A/XBB.1.5)	XAY	Unable to assign**	Pending***	SARS-CoV-2 positive	Total samples tested
Agincourt Clinic (MP)	0	0	0	0	2	0	0	0	0	0	0	1	0	3	6	54
Eastridge Clinic (WC)	0	0	0	0	0	0	0	0	0	1	0	0	0	0	1	104
Edendale Clinic (KZ)	0	0	0	0	1	0	0	2	0	0	0	0	1	1	5	142
Jouberton Clinic (NW)	0	0	0	0	0	0	0	3	0	0	0	0	0	1	4	66
Mitchell's Plain Clinic (WC)	0	0	0	0	0	0	0	1	0	0	1	0	0	0	2	37
<b>Total:</b>	<b>0</b>	<b>0</b>	<b>0</b>	<b>0</b>	<b>3</b>	<b>0</b>	<b>0</b>	<b>6</b>	<b>0</b>	<b>0</b>	<b>2</b>	<b>1</b>	<b>1</b>	<b>5</b>	<b>18</b>	<b>403</b>

KZ: KwaZulu-Natal; NW: North West; WCP: Western Cape; MP: Mpumalanga

\*Specimens are from patients with influenza-like illness at 5 sentinel sites in 4 provinces who met influenza-like illness (ILI), suspected SARS-CoV-2 or *B. pertussis* case definition

**Unable to assign:** no lineage assigned due to poor- sequence quality **OR** low viral load ( $C_t \geq 35$ ) **OR** variant PCR could not assign variant and no sequencing result  
**Pending:** outstanding variant results



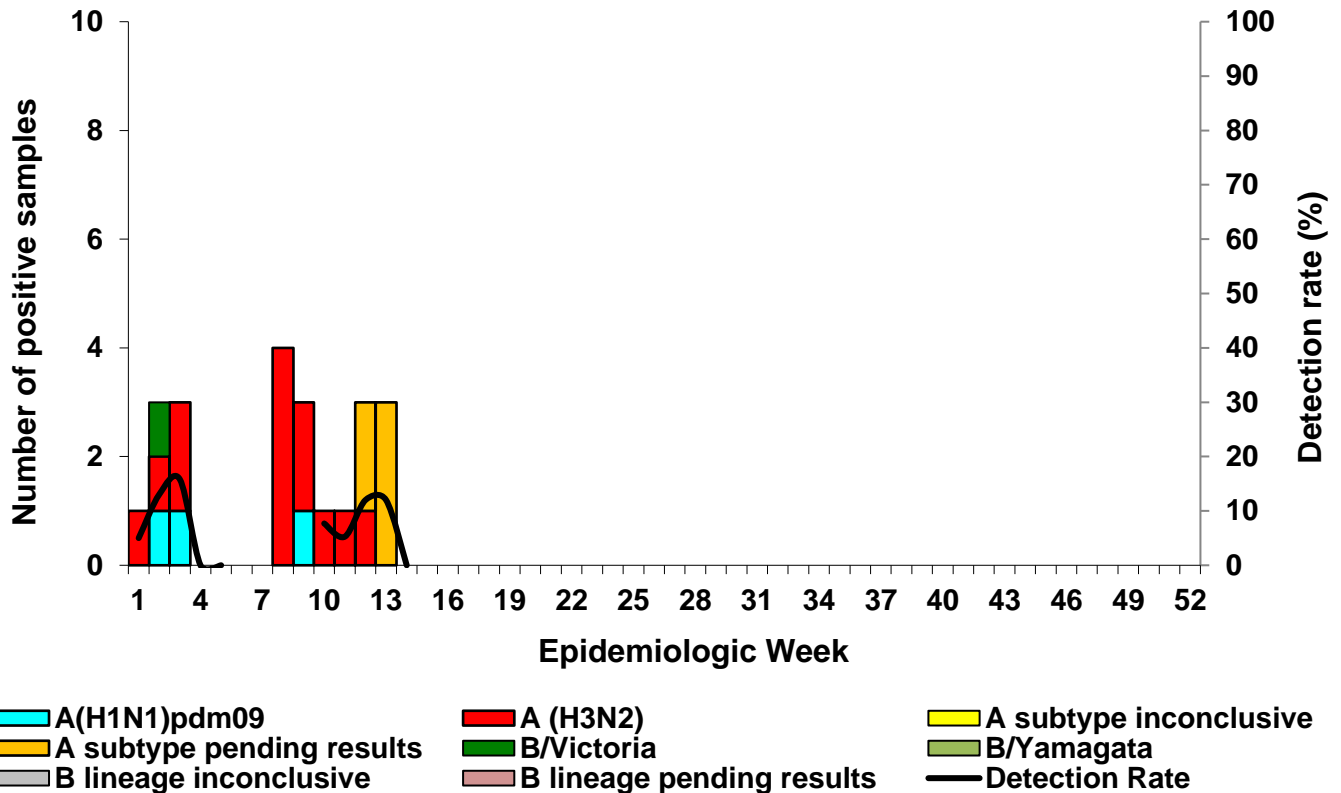


Figure 8. Number of positive patients\* by influenza subtype and lineage and detection rate\*\* by week, ILI surveillance - Viral Watch, 01/01/2023-09/04/2023

\*Specimens from patients with influenza-like illnesses at 92 sentinel sites in 8 provinces

\*\*Only reported for weeks with >10 specimens submitted.

Inconclusive: insufficient viral load in sample and unable to characterise further

Table 6. Number of laboratory-confirmed influenza cases by influenza subtype and lineage and total number of samples tested by province, ILI surveillance - Viral Watch, 01/01/2023-09/04/2023

Province	A(H1N1) pdm09	A(H3N2)	A subtype inconclusive	A subtype pending results*	B/Victoria	B/Yamagata	B lineage inconclusive	B lineage pending results*	Total samples
Eastern Cape	0	0	0	2	0	0	0	0	4
Free State	0	0	0	0	0	0	0	0	0
Gauteng	1	8	0	2	1	0	0	0	188
Limpopo	0	0	0	0	0	0	0	0	0
Mpumalanga	0	0	0	0	0	0	0	0	0
North West	0	0	0	0	0	0	0	0	0
Northern Cape	0	0	0	0	0	0	0	0	0
Western Cape	2	5	0	1	0	0	0	0	33
<b>Total:</b>	<b>3</b>	<b>13</b>	<b>0</b>	<b>5</b>	<b>1</b>	<b>0</b>	<b>0</b>	<b>0</b>	<b>225</b>

\*Inconclusive: insufficient viral load in sample and unable to characterise further

\*\*Influenza A subtype or B lineage results are pending

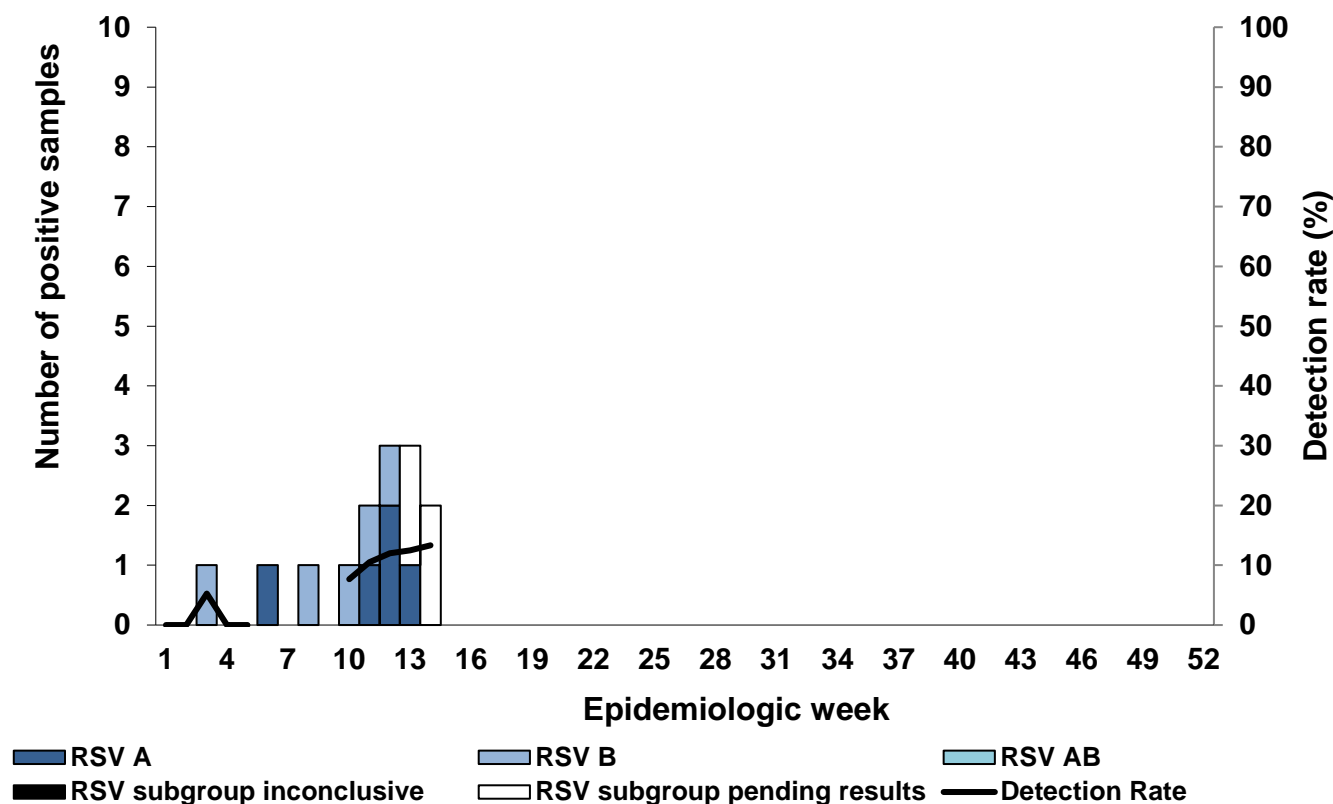


Figure 9. Number of RSV positive cases testing positive for respiratory syncytial virus (RSV)\* by subgroup and detection rate\*\* by week, ILI surveillance - Viral Watch, 01/01/2023-09/04/2023

\*Specimens from patients with Influenza-like illnesses at 92 sentinel sites in 8 provinces

\*\*Only reported for weeks with >10 specimens submitted.

Table 7. Number of RSV positive cases identified and total number of samples tested by province, ILI surveillance - Viral Watch, 01/01/2023-09/04/2023

Province	RSV A	RSV B	RSV AB*	RSV subgroup inconclusive**	RSV subgroup pending results***	Total samples tested
Eastern Cape	0	0	0	0	0	4
Free State	0	0	0	0	0	0
Gauteng	5	4	0	0	4	188
Limpopo	0	0	0	0	0	0
Mpumalanga	0	0	0	0	0	0
North West	0	0	0	0	0	0
Northern Cape	0	0	0	0	0	0
Western Cape	0	1	0	0	0	33
<b>Total:</b>	<b>5</b>	<b>5</b>	<b>0</b>	<b>0</b>	<b>4</b>	<b>225</b>

\*RSV AB: Both RSV A and B subgroup identified

\*\*Inconclusive: insufficient viral load in sample and unable to characterise further

\*\*\*RSV results for subgroups are pending

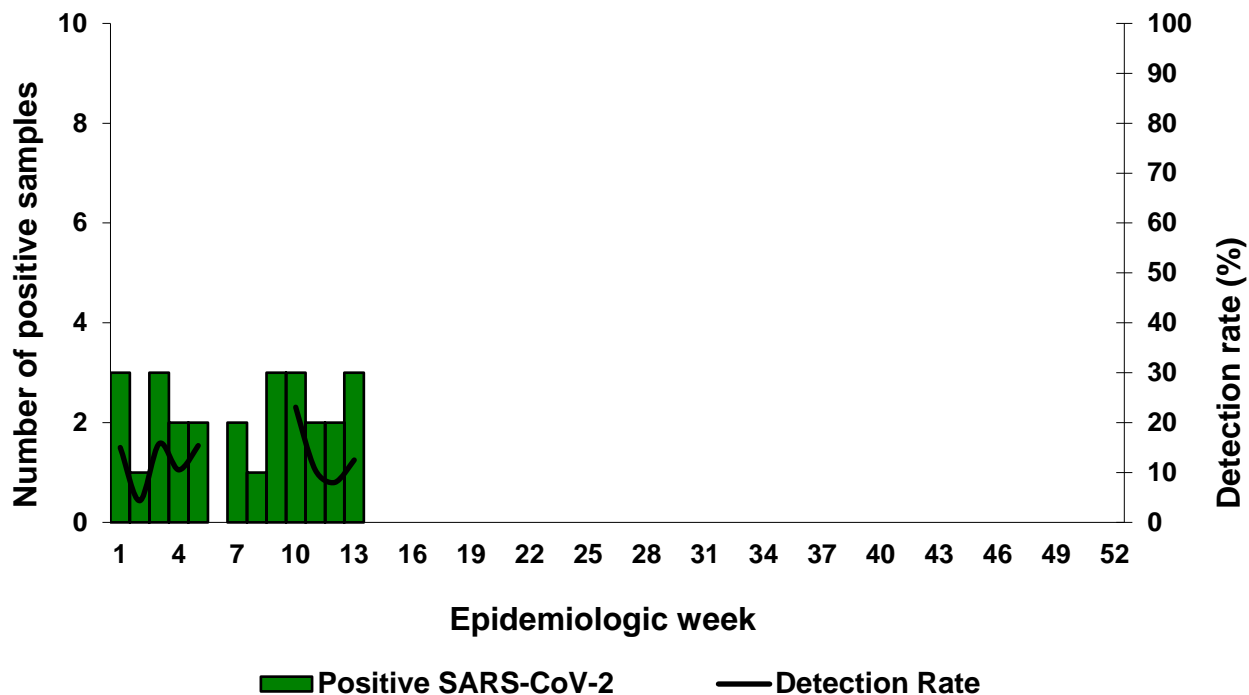


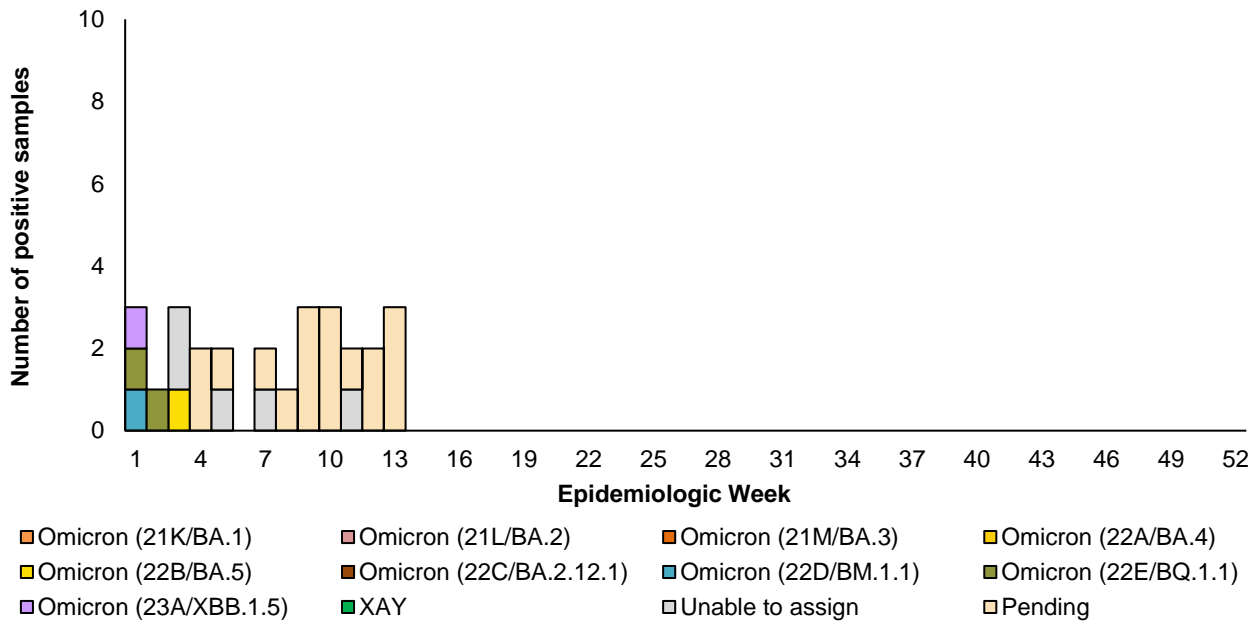
Figure 10. Number of patients testing positive for SARS-CoV-2\*, by site and detection rate\*\* by week, ILI surveillance - Viral Watch, 01/01/2023-09/04/2023

\*Specimens from patients with influenza-like illnesses at 92 sentinel sites in 8 provinces

\*\*Only reported for weeks with >10 specimens submitted.

Table 8. Number of SARS-CoV-2 positive cases identified and total number tested by province, ILI surveillance - Viral Watch, 01/01/2023-09/04/2023

Province	SARS-CoV-2 positive	Total samples tested
Eastern Cape	0	4
Free State	0	0
Gauteng	19	188
Limpopo	0	0
Mpumalanga	0	0
North West	0	0
Northern Cape	0	0
Western Cape	8	33
<b>Total:</b>	<b>27</b>	<b>225</b>



**Figure 11. Number and detection rate of laboratory confirmed SARS-CoV-2\* cases by variant type (variant PCR/sequencing) and week, ILI surveillance - Viral Watch, 01/01/2023-09/04/2023**

\*Specimens from patients with influenza-like illnesses at 92 sentinel sites in 8 provinces

**Unable to assign:** no lineage assigned due to poor- sequence quality **OR** low viral load ( $C_t \geq 35$ ) **OR** variant PCR could not assign variant and no sequencing result  
**Pending:** outstanding variant results

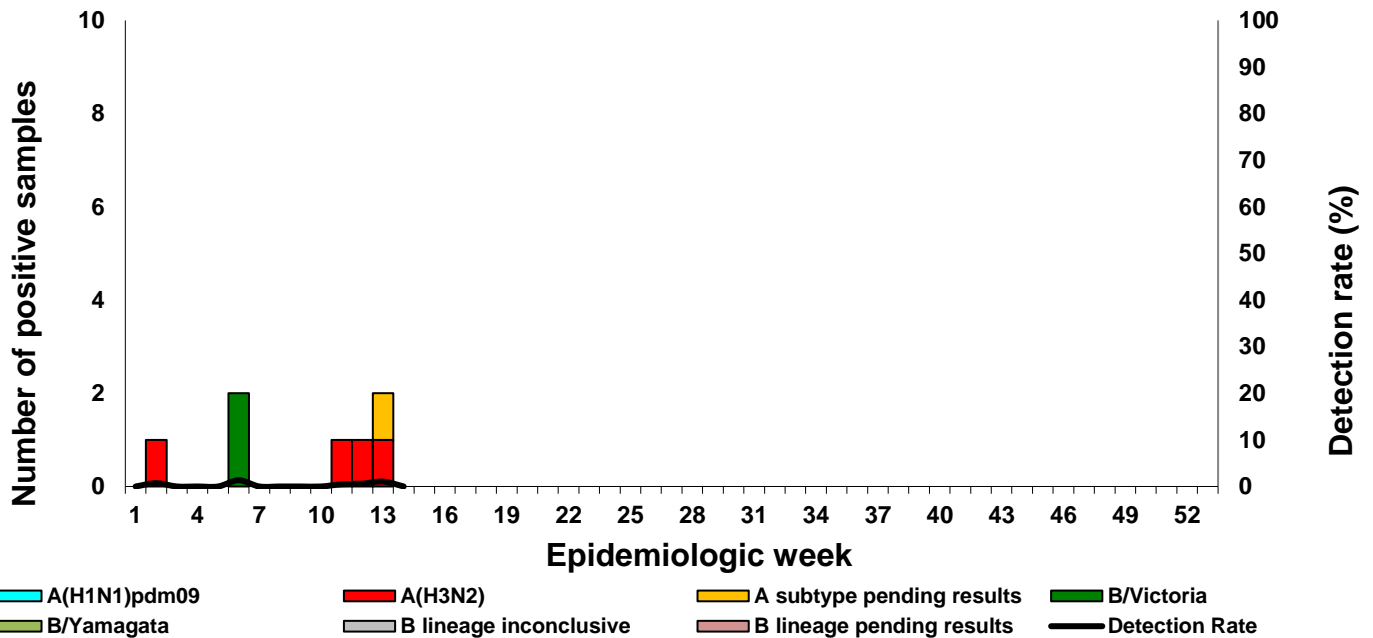
**Table 9. Number of SARS-CoV-2\* positive cases by variant (variant PCR and/or sequencing) identified and total number of samples tested by province, ILI surveillance - Viral Watch, 01/01/2023-09/04/2023**

Clinic (Province)	Omicron (21K/BA.1)	Omicron (21L/BA.2)	Omicron (21M/BA.3)	Omicron (22A/BA.4)	Omicron (22B/BA.5)	Omicron (22C/BA.2.12.1)	Omicron (22D/BM.1.1)	Omicron (22E/BQ.1.1)	Omicron (23A/XBB.1.5)	XAY	Unable to assign**	Pending***	Total SARS-CoV-2 positive	Total samples tested
Eastern Cape	0	0	0	0	0	0	0	0	0	0	0	0	0	4
Free State	0	0	0	0	0	0	0	0	0	0	0	0	0	0
Gauteng	0	0	0	0	1	0	1	2	0	0	2	13	19	188
Limpopo	0	0	0	0	0	0	0	0	0	0	0	0	0	0
Mpumalanga	0	0	0	0	0	0	0	0	0	0	0	0	0	0
North West	0	0	0	0	0	0	0	0	0	0	0	0	0	0
Northern Cape	0	0	0	0	0	0	0	0	0	0	0	0	0	0
Western Cape	0	0	0	0	0	0	0	0	1	0	3	4	8	33
<b>Total:</b>	<b>0</b>	<b>0</b>	<b>0</b>	<b>0</b>	<b>1</b>	<b>0</b>	<b>1</b>	<b>2</b>	<b>1</b>	<b>0</b>	<b>5</b>	<b>17</b>	<b>27</b>	<b>225</b>

\*Specimens from patients with influenza-like illnesses at 92 sentinel sites in 8 provinces

\*\*No cases of Alpha, Beta or 20D (C.1.2) variants detected.

**Unable to assign:** no lineage assigned due to poor- sequence quality **OR** low viral load ( $C_t \geq 35$ ) **OR** variant PCR could not assign variant and no sequencing result  
**Pending:** outstanding variant results



**Figure 12. Number of positive influenza positive cases\* by influenza subtype and lineage\*\* and detection rate\*\*\* by week, pneumonia surveillance public hospitals, 01/01/2023-09/04/2023**

Inconclusive: insufficient viral load in sample and unable to characterise further

\*Specimens from patients hospitalised with pneumonia at 11 sentinel sites in 6 provinces

\*\*No patients who met suspected the SARS-CoV-2 or *B. pertussis* case definition but did not meet pneumonia (SRI) case definition.

\*\*\*Only reported for weeks with >10 specimens submitted

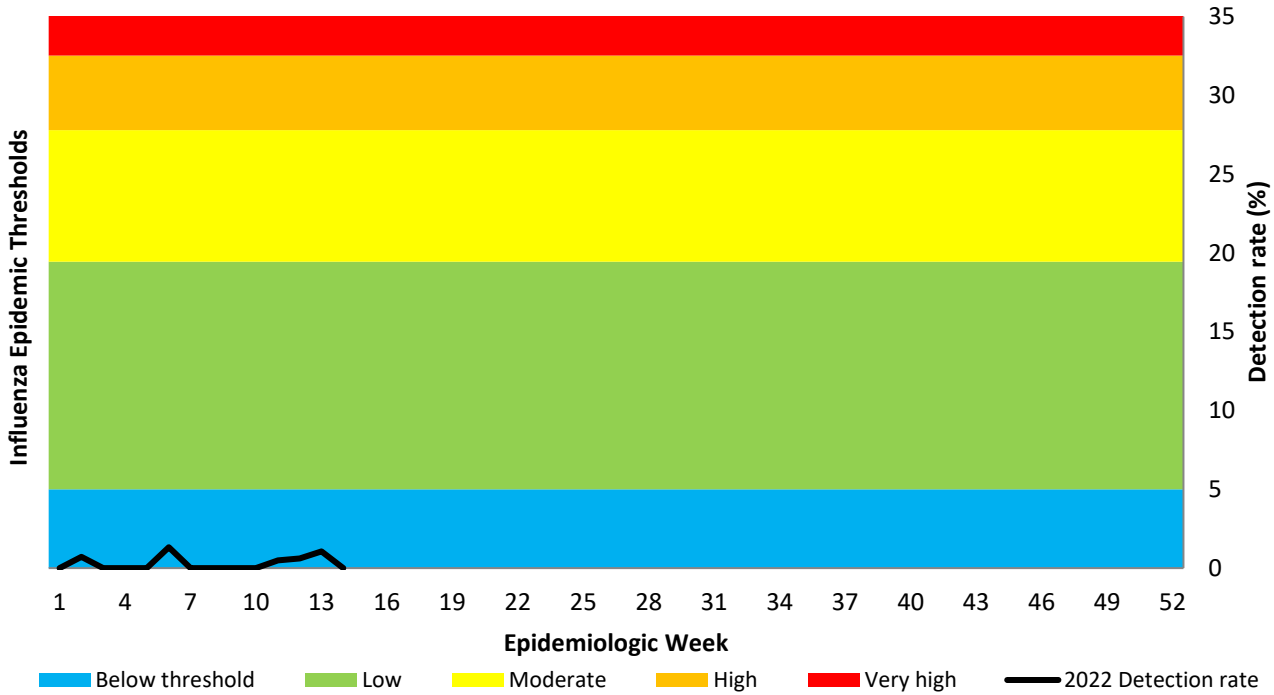
**Table 10. Number of laboratory confirmed influenza cases by subtype and lineage\* and total number of samples tested by hospital, pneumonia surveillance public hospitals, 01/01/2023-09/04/2023**

Hospital (Province)	A(H1N1)pdm09	A(H3N2)	A subtype inconclusive	A subtype pending results***	B/Victoria	B/Yamagata	B lineage inconclusive	B lineage pending results***	Total samples
Edendale (KZ)	0	0	0	0	1	0	0	0	199
Helen Joseph-Rahima Moosa (GP)	0	1	0	1	0	0	0	0	367
Khayelitsha (WC)	0	0	0	0	1	0	0	0	191
Klerksdorp-Tshepong (NW)	0	0	0	0	0	0	0	0	121
Livingstone (EC)	0	2	0	0	0	0	0	0	190
Mapulaneng-Matikwana (MP)	0	0	0	0	0	0	0	0	136
Mitchell's Plain (WC)	0	0	0	0	0	0	0	0	168
Red Cross (WC)	0	1	0	0	0	0	0	0	322
Tambo Memorial (GP)	0	0	0	0	0	0	0	0	113
Tembisa (GP)	0	0	0	0	0	0	0	0	135
Tintswalo (MP)	0	0	0	0	0	0	0	0	95
Tygerberg (WC)	0	0	0	0	0	0	0	0	51
<b>Total:</b>	<b>0</b>	<b>4</b>	<b>0</b>	<b>1</b>	<b>2</b>	<b>0</b>	<b>0</b>	<b>0</b>	<b>2088</b>

\* No patients who met suspected SARS-CoV-2 or *B. pertussis* case definition but did not meet pneumonia (SRI) case definition.

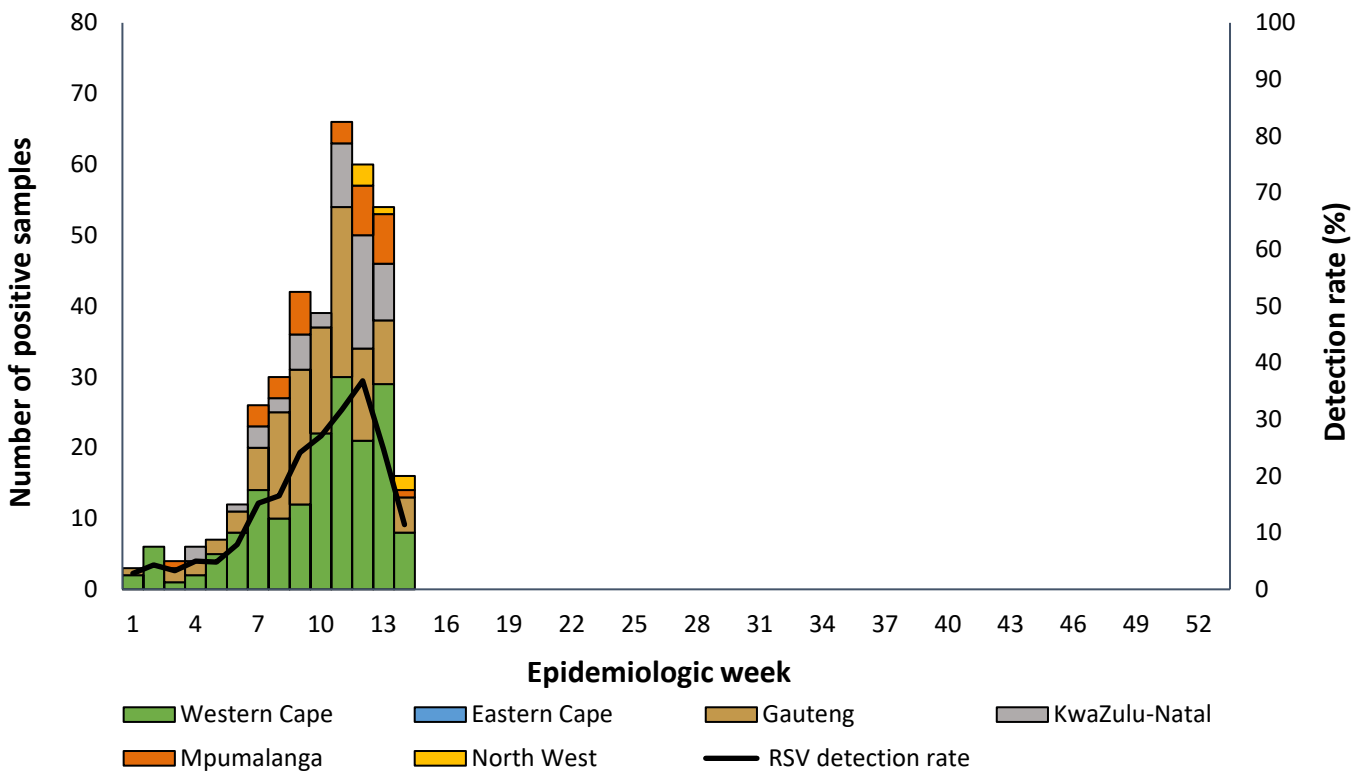
\*\*Inconclusive: insufficient viral load in sample and unable to characterise further

\*\*\*Influenza A subtype or B lineage results are pending



**Figure 13. Influenza percentage detections and epidemic thresholds\* among cases of all ages, pneumonia surveillance public hospitals, 01/01/2023-09/04/2023**

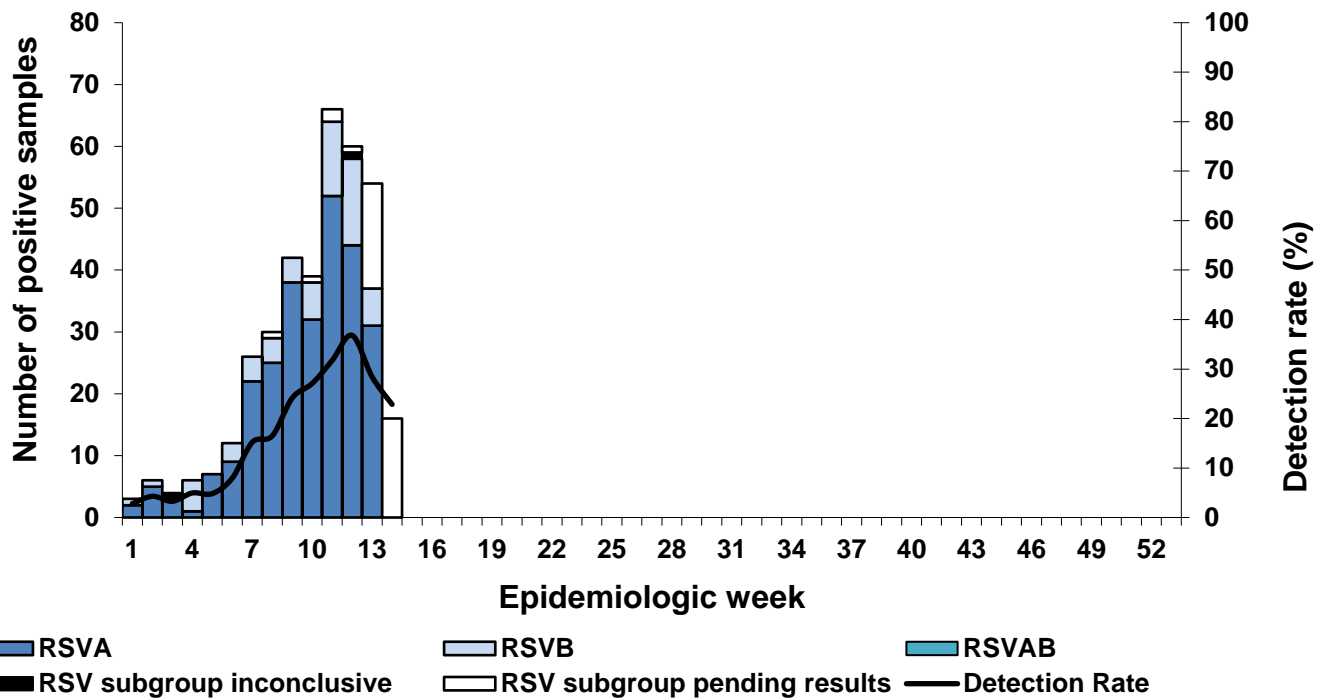
\*Thresholds based on 2010-2019 data



**Figure 14. Number of patients (all ages) testing positive for respiratory syncytial virus\* by province and detection rate by week, pneumonia surveillance public hospitals, 01/01/2023-09/04/2023**

Specimens from patients hospitalised with pneumonia at 11 sentinel sites in 6 provinces.

\* No patients who met suspected SARS-CoV-2 or *B. pertussis* case definition but did not meet pneumonia (SRI) case definition.



**Figure 15. Number of patients (all ages) testing positive for respiratory syncytial virus\* by subgroup and detection rate by week, pneumonia surveillance public hospitals, 01/01/2023-09/04/2023**

Specimens from patients hospitalised with pneumonia at 11 sentinel sites in 6 provinces.

Inconclusive: insufficient viral load in sample and unable to characterise further

RSV AB: Both RSV A and B subgroup identified

RSV subgroup pending: RSV results for subgroups are pending

\* No patients who met suspected SARS-CoV-2 or *B. pertussis* case definition but did not meet pneumonia (SRI) case definition.

**Table 11. Number of patients (all ages) positive for respiratory syncytial virus subgroups\* by subgroups identified and total number of samples tested by hospital, pneumonia surveillance public hospitals, 01/01/2023-09/04/2023**

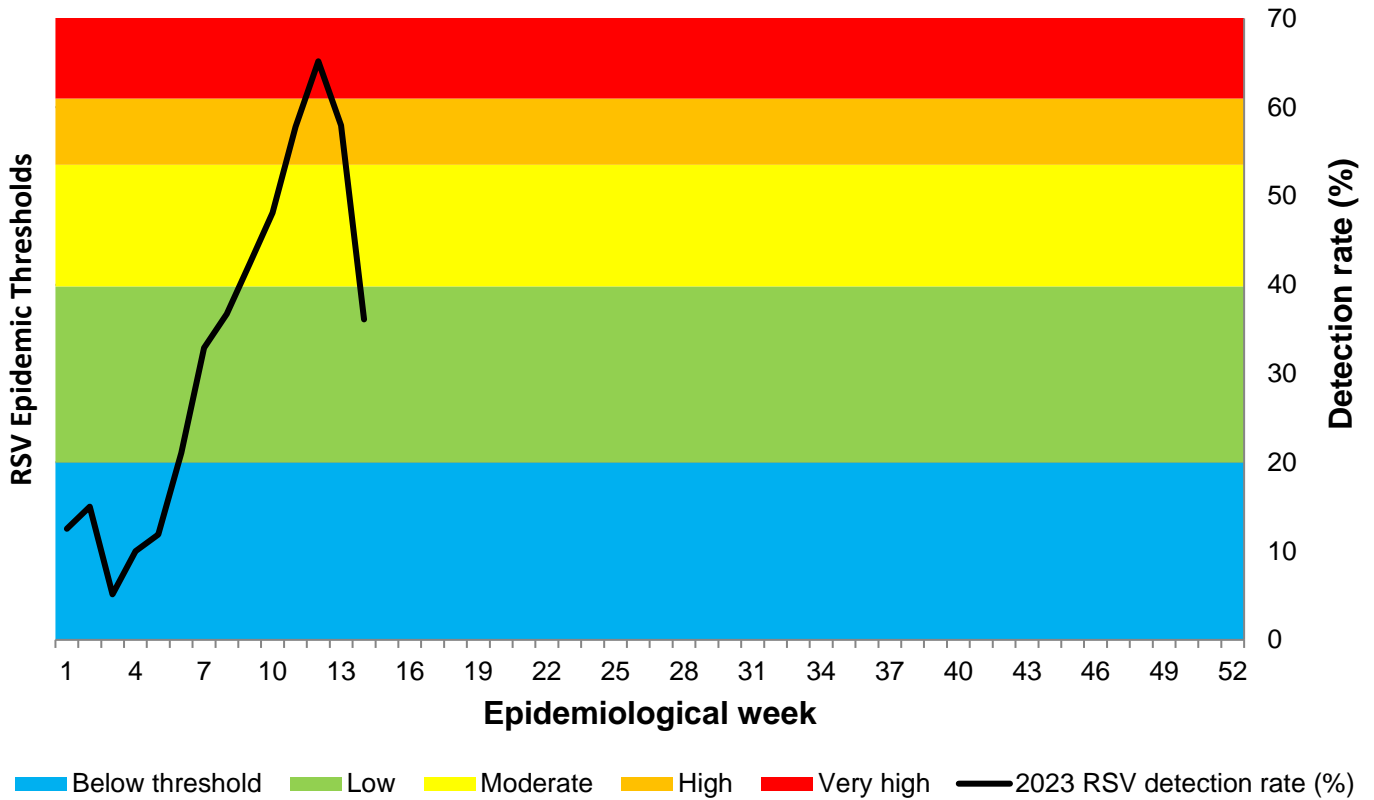
Hospital (Province)	RSVA	RSVB	RSVAB**	RSV subgroup inconclusive** *	RSV subgroup pending** **	Total samples
Edendale (KZ)	18	29	0	1	0	199
Helen Joseph-Rahima Moosa (GP)	101	3	0	1	9	367
Khayelitsha (WC)	1	1	0	0	1	191
Klerksdorp-Tshepong (NW)	3	0	0	0	3	121
Livingstone (EC)	0	0	0	0	0	190
Mapulaneng-Matikwana (MP)	5	3	0	0	2	136
Mitchell's Plain (WC)	40	4	0	0	9	168
Red Cross (WC)	86	18	0	0	8	322
Tambo Memorial (GP)	0	0	0	0	0	113
Tembisa (GP)	1	1	0	0	0	135
Tintswalo (MP)	16	0	0	0	5	95
Tygerberg (WC)	0	1	0	0	1	51
<b>Total:</b>	<b>271</b>	<b>60</b>	<b>0</b>	<b>2</b>	<b>38</b>	<b>2088</b>

\* No patients who met suspected SARS-CoV-2 or *B. pertussis* case definition but did not meet pneumonia (SRI) case definition.

\*\*RSV AB: Both RSV A and B subgroup identified

\*\*\*Inconclusive: insufficient viral load in sample and unable to characterise further

\*\*\*\*RSV results for subgroups are pending

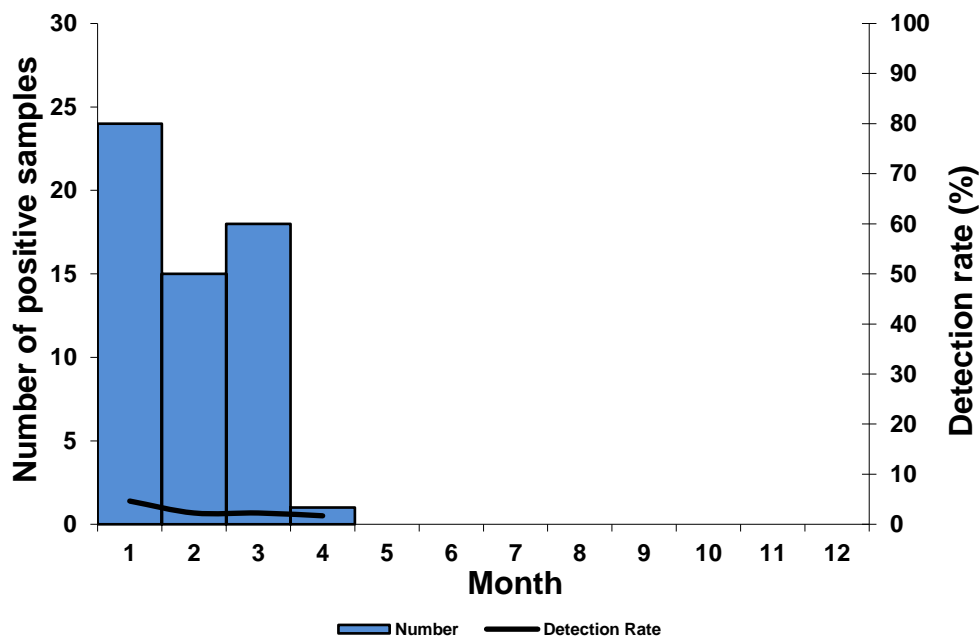


**Figure 16. RSV percentage detections\* and epidemic thresholds\*\* among children aged < 5 years, pneumonia surveillance public hospitals, 01/01/2023-09/04/2023**

\*Although the detection rate declined in week 14 to a low level of activity, it should be noted that there are delays in the testing of week 14 specimens due to public holidays in this period.

\*\*Thresholds based on 2010-2019 data





**Figure 17. Number of patients testing positive for *B. pertussis*\* and detection rate by month, pneumonia surveillance public hospitals\*\*, 01/01/2023-09/04/2023**

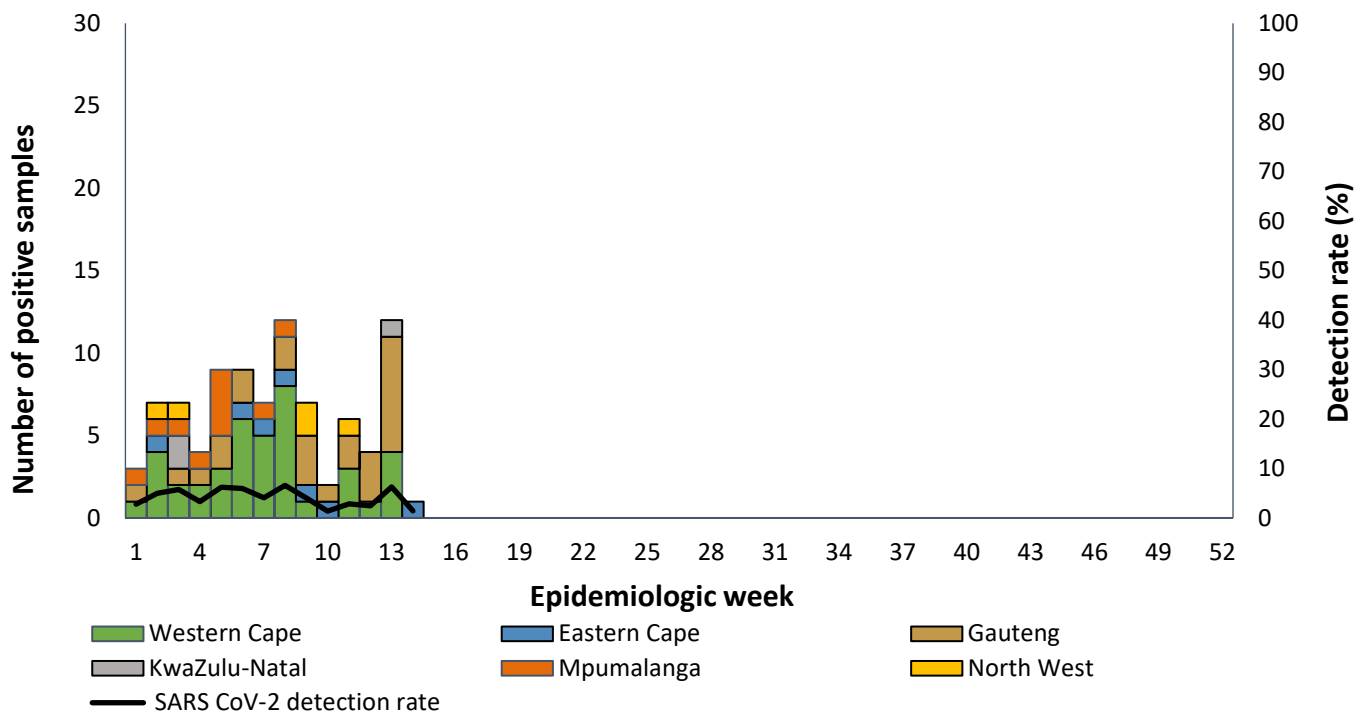
\* No patients who met the suspected SARS-CoV-2 or *B. pertussis* case definition but did not meet Pneumonia Surveillance case definition.

\*\*Specimens from patients hospitalised with pneumonia at 11 sentinel sites in 6 provinces.

**Table 12. Number of patients testing positive for *B. pertussis*\* identified and total number of samples tested by hospital and province, pneumonia surveillance public hospitals, 01/01/2023-09/04/2023**

Hospital (Province)	<i>B. pertussis</i> Positive	Total samples
Edendale (KZ)	10	199
Helen Joseph-Rahima Moosa (GP)	5	358
Khayelitsha (WC)	3	179
Klerksdorp-Tshepong(NW)	11	118
Livingstone (EC)	2	184
Mapulaneng-Matikwana (MP)	8	131
Mitchell's Plain (WC)	2	167
Red Cross (WC)	7	319
Tambo Memorial (GP)	3	109
Tembisa (GP)	3	133
Tintswalo (MP)	2	94
Tygerberg (WC)	2	51
<b>Total:</b>	<b>58</b>	<b>2042</b>

\* No patients who met the suspected SARS-CoV-2 or *B. pertussis* case definition but did not meet the pneumonia (SRI) case definition. These are not included in the table.



**Figure 18. Number of patients testing positive for SARS-CoV-2\*\* by province and detection rate by week, pneumonia surveillance public hospitals, 01/01/2023-09/04/2023**

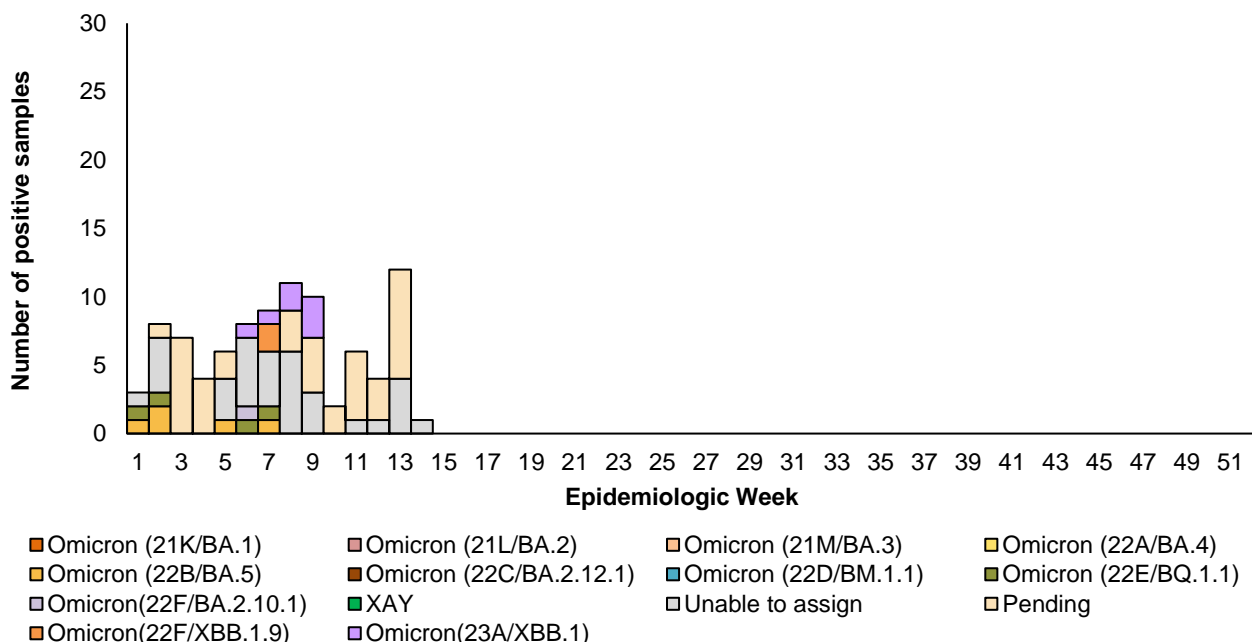
\*Specimens from patients hospitalized with pneumonia at 11 sentinel sites in 6 provinces.

\*\*No patients met suspected SARS-CoV-2 or *B. pertussis* case definition but did not meet pneumonia (SRI) case definition.

**Table 13. Number of patients positive for SARS-CoV-2\* and total number of samples tested by hospital, pneumonia surveillance public hospitals, 01/01/2023-09/04/2023**

Hospital (Province)	SARS-CoV-2 positive	Total samples tested
Edendale (KZ)	3	199
Helen Joseph-Rahima Moosa (GP)	10	367
Khayelitsha (WC)	13	191
Klerksdorp-Tshepong (NW)	5	121
Livingstone (EC)	7	190
Mapulaneng-Matikwana (MP)	7	136
Mitchell's Plain (WC)	13	168
Red Cross (WC)	11	322
Tambo Memorial (GP)	8	113
Tembisa (GP)	7	135
Tintswalo (MP)	3	95
Tygerberg (WC)	3	51
<b>Total:</b>	<b>90</b>	<b>2088</b>

\* No patients who met suspected SARS-CoV-2 or *B. pertussis* case definition but did not meet pneumonia (SRI) case definition.



**Figure 19. Number and detection rate of laboratory-confirmed SARS-CoV-2 cases\* by variant type (variant PCR/sequencing), pneumonia surveillance public hospitals, 01/01/2023-09/04/2023**

\*Specimens are from hospitalized patients at 11 sentinel sites in 6 provinces who met the pneumonia (SRI), suspected SARS-CoV-2 or *B. pertussis* case definition  
**Unable to assign:** no lineage assigned due to poor- sequence quality **OR** low viral load ( $C_t \geq 35$ ) **OR** variant PCR could not assign variant and no sequencing result  
**Pending:** outstanding variant results

**Table 14. Number of SARS-CoV-2 positive cases\* by variant (variant PCR and/or sequencing) identified and total number of samples tested by hospital, pneumonia surveillance public hospitals, 01/01/2023-09/04/2023**

Hospital (Province)	Omicron (21K/BA.1)	Omicron (21L/BA.2)	Omicron (21M/BA.3)	Omicron (22A/BA.4)	Omicron (22B/BA.5)	Omicron (22C/BA.2.12.1)	Omicron (22D/BM.1.1)	Omicron(22E/BQ.1.1)	Omicron(22F/XBB.1.9)	Omicron(22F/BA.2.10.1)	Omicron(23A/XBB.1.5)	XAY	Unable to assign**	Pending***	Total SARS-CoV-2 positive	Total samples tested
Edendale (KZ)	0	0	0	0	0	0	0	0	0	0	0	0	0	3	3	199
Helen Joseph-Rahima Moosa (GP)	0	0	0	0	0	0	0	1	0	0	0	0	1	8	10	367
Khayelitsha (WC)	0	0	0	0	0	0	0	0	0	0	2	0	7	4	13	191
Klerksdorp-Tshepong (NW)	0	0	0	0	1	0	0	0	0	0	0	0	1	3	5	121
Livingstone (EC)	0	0	0	0	1	0	0	0	0	0	0	0	4	2	7	190
Mapulaneng-Matikwana (MP)	0	0	0	0	0	0	0	0	0	0	0	0	3	4	7	136
Mitchell's Plain (WC)	0	0	0	0	1	0	0	0	2	0	1	0	4	5	13	168
Red Cross (WC)	0	0	0	0	2	0	0	0	0	1	1	0	4	3	11	322
Tambo Memorial (GP)	0	0	0	0	0	0	0	2	0	0	2	0	3	1	8	113
Tembisa (GP)	0	0	0	0	0	0	0	0	0	0	0	0	2	5	7	135
Tintswalo (MP)	0	0	0	0	0	0	0	0	0	0	0	0	3	0	3	95
Tygerberg (WC)	0	0	0	0	0	0	0	0	0	0	1	0	1	1	3	51
<b>Total:</b>	<b>0</b>	<b>0</b>	<b>0</b>	<b>0</b>	<b>5</b>	<b>0</b>	<b>0</b>	<b>3</b>	<b>2</b>	<b>1</b>	<b>7</b>	<b>0</b>	<b>33</b>	<b>39</b>	<b>90</b>	<b>2088</b>

\*Specimens are from hospitalized patients at 11 sentinel sites in 6 provinces who met the pneumonia (SRI), suspected SARS-CoV-2 or *B. pertussis* case definition  
**Unable to assign:** no lineage assigned due to poor- sequence quality **OR** low viral load ( $C_t \geq 35$ ) **OR** variant PCR could not assign variant and no sequencing result  
**Pending:** outstanding variant results

## Summary of individuals with laboratory-confirmed SARS-CoV-2

**Table 15: Characteristics of individuals with laboratory-confirmed SARS-CoV-2, enrolled in influenza-like illness (ILI) and pneumonia surveillance programmes, South Africa, 01/01/2023 – 09/04/2023**

Characteristic	Influenza-like illness (ILI), public-sector*, n=18 (%)	Pneumonia, public-sector, n=90 (%)
<b>Age group (years)</b>		
0-9	3/18 (17)	32/90 (36)
10-19	1/18 (6)	2/90 (2)
20-39	4/18 (22)	23/90 (26)
40-59	8/18 (44)	23/90 (26)
60-79	2/18 (11)	8/90 (9)
≥80	0/18 (0)	2/90 (2)
<b>Sex-female</b>	13/18 (72)	40/90 (44)
<b>Province*</b>		
Eastern Cape	0/18 (0)	7/90 (8)
Gauteng	0/18 (0)	25/90 (28)
KwaZulu-Natal	5/18 (28)	3/90 (3)
Mpumalanga	6/18 (33)	10/90 (11)
North West	4/18 (22)	5/90 (6)
Western Cape	3/18 (17)	40/90 (44)
<b>Race</b>		
Black	14/18 (78)	66/90 (73)
Coloured	3/18 (17)	15/90 (17)
Asian/Indian	0/18 (0)	1/90 (1)
White	0/18 (0)	4/90 (4)
Unknown	1/18 (6)	4/90 (4)
<b>Variant</b>		
Omicron (21K/BA.1)	0/18 (0)	0/90 (0)
Omicron (21L/BA.2)	0/18 (0)	0/90 (0)
Omicron (21M/BA.3)	0/18 (0)	0/90 (0)
Omicron (22A/BA.4)	0/18 (0)	0/90 (0)
Omicron (22B/BA.5)	3/18 (17)	5/90 (6)
Omicron (22C/ BA.2.12.1)	0/18 (0)	0/90 (0)
Omicron (22D/BM.1.1)	0/18 (0)	0/90 (0)
Omicron (22E/BQ.1.1)	6/18 (33)	3/90 (3)
Omicron (22F/XBB.1.9)	0/18 (0)	2/90 (2)
Omicron (22F/BA.2.10.)	0/18 (0)	1/90 (1)
Omicron (23A/XBB.1.5)	2/18 (11)	7/90 (8)
XAY	1/18 (6)	0/90 (0)
Unable to assign**	1/18 (6)	33/90 (37)
Pending results***	5/18 (28)	39/90 (43)
<b>Presentation</b>		
Fever	12/18 (67)	52/88 (59)
Cough	18/18 (100)	81/88 (92)
Shortness of breath	5/17 (29)	60/81 (74)
Chest pain	7/17 (41)	24/81 (30)
Diarrhoea	1/17 (6)	8/81 (10)
<b>Underlying conditions</b>		
Hypertension	5/17 (29)	9/83 (11)
Cardiac	0/18 (0)	2/90 (2)
Lung disease	0/17 (0)	1/83 (1)
Diabetes	2/17 (12)	2/83 (2)
Cancer	0/18 (0)	0/90 (0)
Tuberculosis - Previous	0/18 (0)	1/90 (1)
Tuberculosis - Current	1/18 (6)	15/90 (17)
HIV-infection	4/17 (24)	33/84 (39)
Other ****	2/17 (12)	11/83 (13)
<b>SARS-CoV-2 Vaccine</b>		
Pfizer-BioNTech (1st dose)	1/18 (6)	3/90 (3)
Pfizer-BioNTech (2nd dose)	0/18 (0)	3/90 (3)
Johnson & Johnson (1st dose)	3/18 (17)	1/90 (1)
Johnson & Johnson (2nd dose)	1/18 (6)	0/90 (0)
Unknown	2/18 (11)	8/90 (9)
No vaccine	11/18 (61)	76/90 (84)
<b>Management</b>		
Oxygen therapy	0/17 (0)	42/77 (55)
ICU admission	0/17 (0)	1/77 (1)
<b>Outcome*****</b>		
Died	0/13 (0)	1/65 (2)

\*ILI surveillance not conducted in Gauteng or Eastern Cape Province

\*\*Unable to assign: no lineage assigned due to poor- sequence quality OR low viral load (Ct ≥35) OR variant PCR could not assign variant and no sequencing result

\*\*\*Pending results: outstanding variant results

\*\*\*\*Chronic lung, liver and kidney disease, organ transplant, pregnancy, malnutrition, obesity, tracheostomy, prematurity, seizure, stroke, anaemia, asplenia, burns, Systemic lupus erythematosus, seizures

\*\*\*\*\*Outcome includes patients who are still hospitalised, have been discharged or referred, and those who died

## Methods

### SARS-CoV-2 Testing

March 2020 – March 2021: SARS-CoV-2 was detected using the Roche E gene real-time PCR assay (Corman et al. *Euro Surveillance* 2020) with cycle threshold (C<sub>t</sub>) <40 interpreted as positive for SARS-CoV-2. From April 2021 to date the laboratory changed to the Allplex™ SARS-CoV-2/FluA/FluB/RSV kit (Seegene Inc., Seoul, South Korea), with positivity assigned if the PCR cycle threshold (C<sub>t</sub>) was <40 for ≥1 gene targets (N, S or RdRp).

A confirmed SARS-CoV-2 case is a person of any age enrolled in surveillance with laboratory confirmation of SARS-CoV-2 infection by PCR. Only positive SARS-CoV-2 specimens on PCR are further tested to determine variant/lineage type by variant PCR or genomic sequencing.  
Variant PCR

Allplex™ SARS-CoV-2 Variants I PCR detects Alpha and Beta/Gamma variants. The assay was conducted on all SARS-CoV-2-positive samples from 1 March 2020 – 30 June 2021.

Allplex™ SARS-CoV-2 Variants II PCR detects Delta variant and distinguishes Beta from Gamma. The assay was conducted on SARS-CoV-2-positive samples from 1 Jan to 30 June 2021.

**Extraction:** Total nucleic acids were extracted from 200µl NP/OP samples in universal or viral transport medium using a MagNA Pure 96 automated extractor and DNA/Viral NA Small Volume v2.0 extraction kit (Roche Diagnostics, Mannheim, Germany).

### SARS-CoV-2 genomic surveillance

#### SARS-CoV-2 Whole-Genome Sequencing and Genome Assembly

##### RNA Extraction

RNA was extracted either manually or automatically in batches, using the QIAamp viral RNA mini kit (QIAGEN, CA, USA) or the Chemagic 360 using the CMG-1049 kit (PerkinElmer, MA, USA). A modification was done on the manual extractions by adding 280 µl per sample, in order to increase yields. 300 µl of each sample was used for automated magnetic bead-based extraction using the Chemagic 360. RNA was eluted in 60 µl of the elution buffer. Isolated RNA was stored at -80 °C prior to use.

##### PCR and Library Preparation

Sequencing was performed using the Illumina COVIDSeq protocol (Illumina Inc., CA, USA) or nCoV-2019 ARTIC network sequencing protocol v3 (<https://artic.network/ncov-2019>). These are amplicon-based next-generation sequencing approaches. Briefly, for the nCoV-2019 ARTIC network sequencing protocol, the first strand synthesis was carried out on extracted RNA samples using random hexamer primers from the SuperScript IV reverse transcriptase synthesis kit (Life Technologies, CA, USA) or LunaScript RT SuperMix Kit (New England Biolabs (NEB), MA, USA). The synthesized cDNA was amplified using multiplex polymerase chain reactions (PCRs) using ARTIC nCoV-2019 v3 primers. For the COVIDSeq protocol, the first strand synthesis was carried out using random hexamer primers from Illumina and the synthesized cDNA underwent two separate multiplex PCR reactions.

For Illumina sequencing using the nCoV-2019 ARTIC network sequencing protocol, the pooled PCR products underwent bead-based tagmentation using the Nextera Flex DNA library preparation kit (Illumina Inc., CA, USA). The adapter-tagged amplicons were cleaned up using AmpureXP purification beads (Beckman Coulter, High Wycombe, UK) and amplified using one round of PCR. The PCRs were indexed using the Nextera CD indexes (Illumina Inc., CA, USA) according to the manufacturer's instructions. For COVIDSeq sequencing protocol, pooled PCR amplified products were processed for tagmentation and adapter ligation using IDT for Illumina Nextera UD Indexes. Further enrichment and clean-up was performed as per protocols provided by the manufacturer (Illumina Inc., CA, USA). Pooled samples from both COVIDSeq protocol and nCoV-2019 ARTIC network protocol were quantified using Qubit 3.0 or 4.0 fluorometer (Invitrogen Inc., MA, USA) using the Qubit dsDNA High Sensitivity assay according to manufacturer's instructions. The fragment sizes were analyzed using TapeStation 4200 (Invitrogen Inc., MA, USA). The pooled libraries were further normalized to 4nM concentration and 25 µl of each normalized pool containing unique index adapter sets were combined in a new tube. The final library pool was denatured and neutralized with 0.2 N sodium hydroxide and 200 mM Tris-HCL (pH7), respectively. 1.5 pM sample library was spiked with 2% PhiX. Libraries were loaded onto a 300-cycle NextSeq 500/550 HighOutput Kit v2 and run on the Illumina NextSeq 550 instrument (Illumina Inc., CA, USA).

##### Assembly, Processing and Quality Control of Genomic Sequences

Raw reads from Illumina sequencing were assembled using the Exatype NGS SARS-CoV-2 pipeline v1.6.1, (<https://sars-cov-2.exatype.com/>). The resulting consensus sequence was further manually polished by considering and correcting indels in homopolymer regions that break the open reading frame (probably sequencing errors) using Aliview v1.27, (<http://ormbunkar.se/aliview/>) (Larsson, 2014). Mutations resulting in mid-gene stop codons and frameshifts were reverted to wild type. All assemblies determined to have acceptable quality (defined as having at least 1 000 000 reads and at least 40 % 10 X coverage) were deposited on GISAID (<https://www.gisaid.org/>) (Elbe & Buckland-Merrett, 2017; Shu & McCauley, 2017).

##### Classification of Lineage, Clade and Associated Mutations

Assembled genomes were assigned lineages using the 'Phylogenetic Assignment of Named Global Outbreak Lineages' (PANGOLIN) software suite (<https://github.com/hCoV-2019/pangolin>) (Rambaut et al., 2020), a tool used for dynamic SARS-CoV-2 lineage classification. The SARS-CoV-2 genomes in our dataset were also classified using the clade classification proposed by NextStrain (<https://nextstrain.org/>), a tool built for real-time tracking of the pathogen evolution (Hadfield et al., 2018).