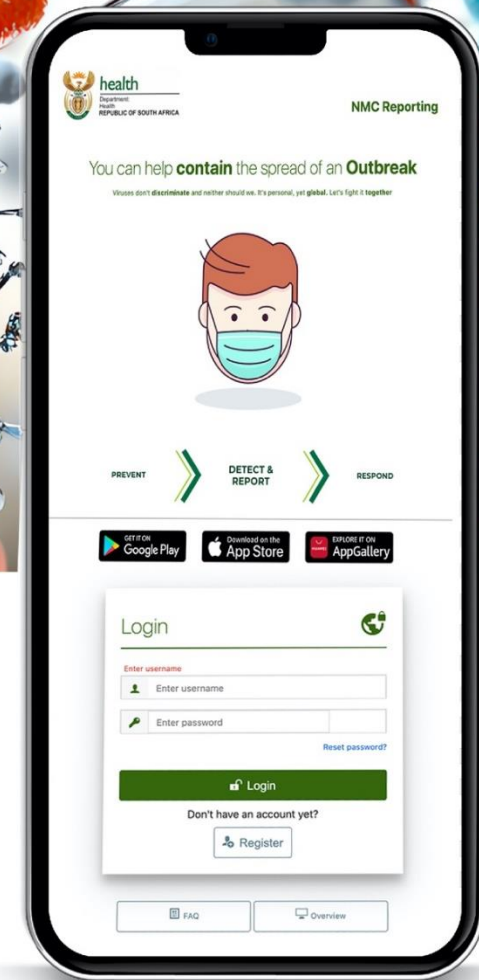
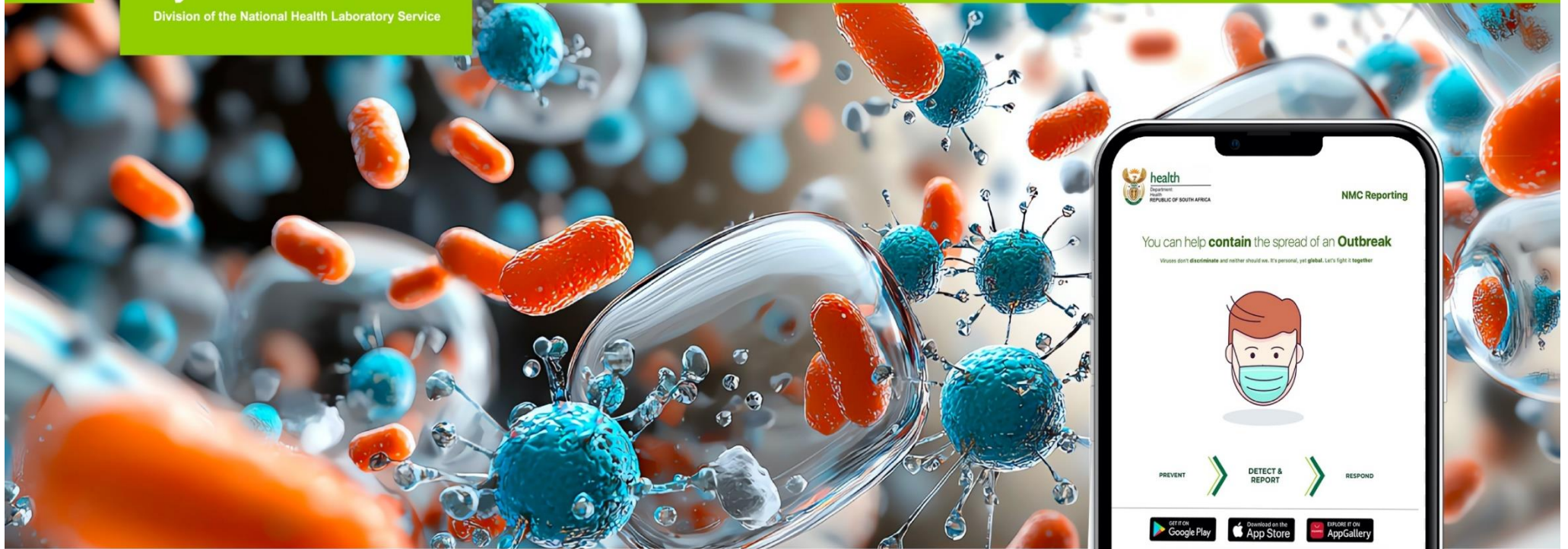




NATIONAL INSTITUTE FOR
COMMUNICABLE DISEASES

Division of the National Health Laboratory Service



Notifiable Medical Conditions Surveillance System Report for August 2025

Contents

Introduction	2
NMC Reporting Application	3
NMC highlights	3
Category 1 Conditions	3
Table 2: Cumulative number of Category 1 notifications by province and epidemiological classification: August 2025	4
Admission Status of the notified NMCs for Category 1 notification	5
Timeliness and Data Quality in Reporting Category 1 Notifiable Medical Conditions	6
Figure 1: Summary Category 1 timelines of the reported cases on the NMC system.	7
Category 2 Notifications	8
Table 4: Cumulative number of Category 2 notifications by province, overall suspected, confirmed and deaths for August 2025	8
Appendix No.1: Data flow chart	10
Link to the website: https://www.nicd.ac.za/nmc-overview/nmc-resources/	10
Appendix No.2: NMC Categories and Case Classification Definitions	10
Link to the website: https://www.nicd.ac.za/nmc-overview/nmc-resources/	10
Appendix No.3: NMC Surveillance Officers List and contacts	10

Introduction

This report summarises data from the National Notifiable Medical Conditions Surveillance System (NMCSS) on cases notified in August 2025. The primary objective of the report is to provide an overview of the notifications by describing the notifications received. The report includes both

Category 1 and Category 2 Notifiable Medical Conditions (NMC), the epidemiological classification of cases by province, and the number of reported deaths.

NMC Reporting Application

The NMC Reporting App is available on both the National Institute for Communicable Diseases (NICD) website and mobile platforms. For more information and to register, please contact the respective NMC surveillance Officer in your province. A list of NMC Surveillance Officers and their contact details is attached as Appendix 3.

NMC highlights

- A total of 14 354 cases were reported to the NMCSS for categories 1 and 2 in August 2025.
- Category 1 (1 384/14 354) 10% and Category 2 (12 970/ 14 354) 90% of the cases were notified.
- Twenty-six (26) deaths were reported under Category 1 notifications.

Table 1: Cumulative number of NMC notifications for Categories 1 and 2: August 2025

NMC Category	Clinical	Lab	Merged	Total
Category 1	769 (55.5%)	533 (38.5%)	82 (6%)	1 384 (100%)
Category 2	10271(79%)	2684 (20.6%)	15 (0.1%)	12 970 (100%)
Total	11040 (76.9%)	3217 (22.4%)	97 (0.7)	14 354 (100%)

Category 1 Conditions

Category 1 conditions must be notified within 24 hours of diagnosis by healthcare providers and private or public health laboratories. These conditions must be notified based on clinical suspicion, before there is a laboratory confirmation. A total of 1,384 (10%) cases were reported for Category 1. The most frequently notified condition was Measles, at 45% (635/1 384). A total of 26 (1.8%) deaths

were reported under Category 1 notifications, with most deaths, 61.5% (16/26), being for agricultural stock remedy poisoning notifications.

Table 2: Cumulative number of Category 1 notifications by province and epidemiological classification: August 2025

Conditions	EC	FS	GP	KZN	LP	MP	NC	NW	WC	Total	Clinical	Laboratory	Confirmed	Deaths
Acute Flaccid Paralysis	1	1	7	2	6	1	1		4	23	23	0	0	1
Agricultural or stock remedy poisoning	9	15	69	9	4	9	0	8	6	129	129	0	0	16
Congenital rubella syndrome	3	2	2	9	2	1	0	1	1	21	1	0	20	2
Diphtheria	0	0	5	0	0	2	0	0	12	19	11	3	5	0
Enteric fever (typhoid or paratyphoid fever)	0	0	13	1	1	1	0	0	5	21	5	4	12	0
Foodborne illness outbreak	4	3	24	11	5	3	0	0	9	59	59	0	0	0
Listeriosis	0	0	0	1	0	0	0	0	0	1	0	0	1	1
Malaria	4	2	30	21	18	54	3	2	9	143	96	2	45	1
Measles	7	36	253	20	137	87	44	24	26	635	325	64	246	1
Meningococcal Disease	4	0	8	3	0	1	2		12	30	10	20	0	3
Mpox	0	0	3	2	0	0	0	0	0	5	5	0	0	0
Pertussis	6	2	25	9	2	10	2	5	28	89	16	65	0	0
Rabies	0	0	2	1	1	0	0	0	0	4	2	1	1	0
Respiratory disease caused by a novel respiratory	0	0	2	1	0	0	0	0	0	3	3	0	0	0
Rubella	2	17	15	13	12	21	31	82	6	199	19	0	180	1
Acute Rheumatic Fever	0	0		1					2	3	1	2	0	0
Grand Total	40	78	458	104	188	190	83	122	120	1384	705	161	510	26

* Suspected, confirmed, and deaths are for the overall notification per condition for August, i.e. not by province

Admission Status of the notified NMCs for Category 1 notification

Table 3 measures the severity of the notified cases. Among the notified Category 1 Notifiable Medical Conditions, 24.4% (352/ 1,385) of the notifications were admitted to health facilities, with 26 (1.8%) deaths reported.

Table 3: Age distribution by gender, admission status, and patient outcome for category 1 NMCs: August 2025

Age group	Gender		Admission Status						Vital signs			
	Female	Male	Inpatient	Outpatient	Transferred	Discharged	Unknown	Missing	Alive	Deceased	Unknown	Missing
0-4	142	152	89	89	6	18	2	90	201	4	0	89
5-9	169	206	46	126	4	14	1	184	188	2	0	185
10-14	95	112	40	55	13	7	6	86	116	3	2	86
15-19	47	51	27	33	5	4	1	28	66	4	0	28
20-24	27	46	25	23	4	3	2	16	56	0	1	16
25-29	23	28	14	12	1	3	0	22	27	2	1	22
30-34	36	34	25	18	3	6	2	17	51	3	0	17
35-39	21	26	21	15	0	1	1	9	36	2	0	9
40-44	19	18	9	9	0	5	4	10	23	2	1	11
45-49	7	21	16	5	0	2	0	5	22	0	1	5
50-54	7	7	6	3	0	1	0	4	9	1	0	4
55-59	4	10	6	4	2	1	0	1	12	1	0	1
60-64	7	6	5	2	1	3	0	2	10	1	0	2
65+	11	16	23	1	1	1	0	1	25	1	0	1
unknown	20	11	0	0	0	0	0	34		0	0	34
Grand Total	635	744	352	395	40	69	19	509	842	26	6	510

Timeliness and Data Quality in Reporting Category 1 Notifiable Medical Conditions

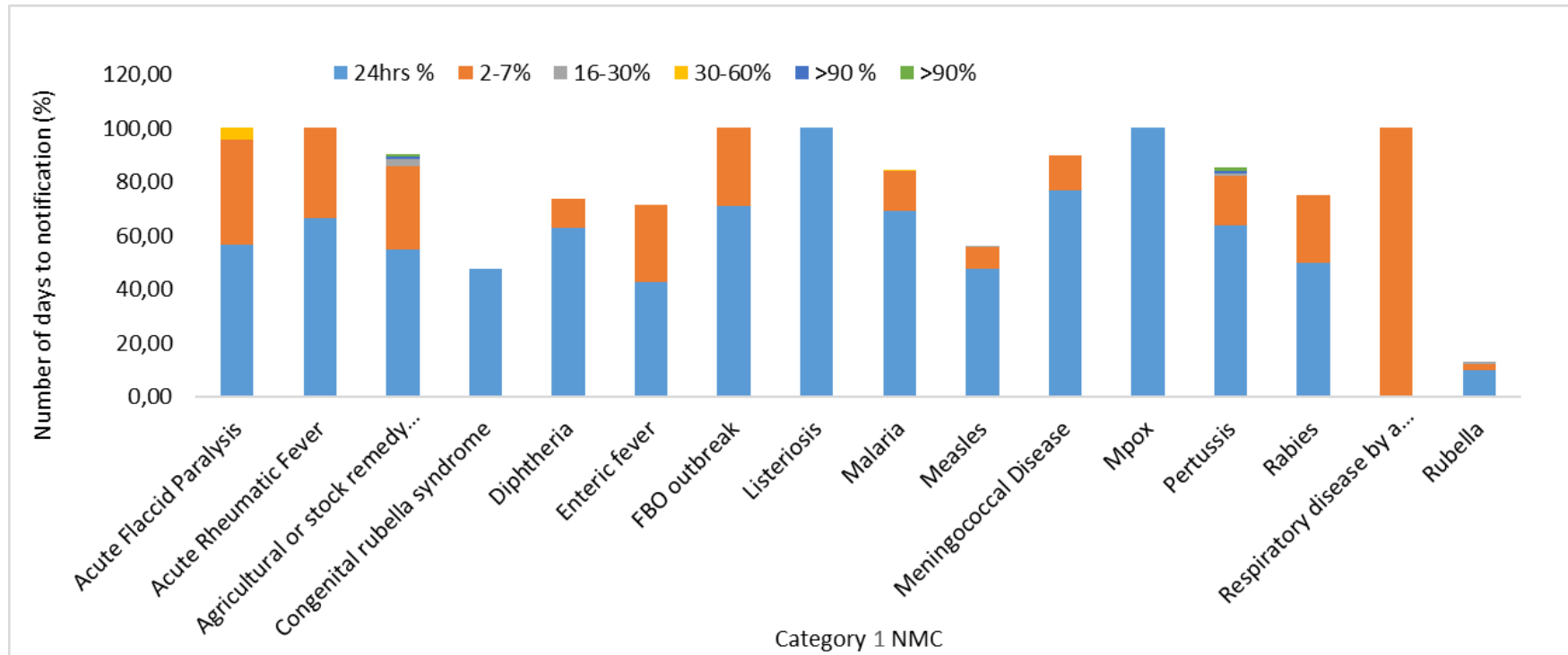


Figure 1: Summary Category 1 timelines of the reported cases on the NMC system.

In August, overall, 48.3% of conditions were reported within 24 hours and 12.7% within 2–7 days, showing moderate timeliness with some delays. Rapid reporting was seen for Mpox and Listeriosis (100%), Meningococcal disease (76.7%), and Foodborne outbreaks (71.2%), while moderate performance was observed for Acute Rheumatic Fever (66.7%) and Malaria (69.2%). However, conditions such as Rubella (10.1%) and Congenital Rubella Syndrome (47.6%) showed poor timeliness, indicating the need for improved awareness and faster notification processes.

Category 2 Notifications

Category 2 conditions must be notified within seven days of diagnosis. A total of 12 970 (90%) Category 2 conditions were notified. Tuberculosis (TB) remains the most notified 76% (9 872) followed by Bilharzia (schistosomiasis), 9% (1 178) . One per cent, 1% (137) Category 2 notifications resulted in death, most were of Hepatitis B 70% (95/137).

Table 4: Cumulative number of Category 2 notifications by province, overall suspected, confirmed and deaths for August 2025.

Conditions	EC	FS	GP	KZN	LP	MP	NW	NC	WC	Total	Clinical	Lab	Confirmed	Deaths
Bilharzia (schistosomiasis)	50	1	24	558	331	193	0	1	15	1173	86	1086	1	2
Brucellosis	0	0	1	1	0	1	0	0	3	6	2	4	0	0
Congenital syphilis	88	39	93	211	14	24	25	12	89	595	85	502	8	7
Hepatitis A	13	12	44	43	13	29	11	15	44	224	50	168	6	0
Hepatitis B	206	21	66	681	11	8	14	37	25	1069	147	922	0	1
Hepatitis C	2	0	9	0	0	0	1	0	1	13	13	0	0	1
Hepatitis E	0	0	2	0	0	0	0	0	0	2	0	2	0	0
Lead poisoning	0	0	0	1	0	0	0	0	0	1	1	0	0	0
Legionellosis	1	1	4	1	0	0	0	2	1	10	2	0	8	1
Maternal death (pregnancy)	0	0	0	0	0	0	0	0	0	0	0	0	0	0
Soil-transmitted helminths	2	0	1	2	0	0	0	0	0	5	5	0	0	0

Tetanus	0	0	0	1	0	0	0	0	0	1	1	0	0	0
Tuberculosis: extensively drug-resistant (XDR -TB)	1	1	3	1	2	0	1	1	2	12	12	0	0	0
Tuberculosis: multidrug-resistant (MDR-TB)	28	7	41	61	5	2	4	6	50	204	204	0	0	4
Tuberculosis: extra-pulmonary	133	78	606	360	79	30	44	64	236	1630	1630	0	0	26
Tuberculosis: pulmonary	1023	512	1435	1578	359	284	432	403	1999	8025	8025	0	0	95
Grand Total	1547	672	2329	3499	814	571	532	541	2465	12970	10263	2684	23	137

* Suspected, confirmed, and deaths are for the overall notification per condition for August, i.e. not by province

Recommendations

- We recommend that clinicians complete all patient clinical and demographic details to improve the NMC data quality.
- Completion of ID number capturing is highly recommended in the SDW system to improve data quality and for merging purposes.
- We welcome stakeholders' feedback and suggestions for the report.
- For more information on the NMC and trainings, kindly contact our Surveillance Officers in your respective provinces. Their contact details are attached in Appendix 3.
- Feel free to reach out to brianb@nicd.ac.za and Tlamelom@nicd.ac.za

Appendix No.1: Data flow chart

Link to the website: <https://www.nicd.ac.za/nmc-overview/nmc-resources/>

Appendix No.2: NMC Categories and Case Classification Definitions

Link to the website: <https://www.nicd.ac.za/nmc-overview/nmc-resources/>

Appendix No.3: NMC Surveillance Officers List and contacts

Province	Name & Surname	Email address	Cell Numbers
Eastern Cape	Nkosimpendulo Mngceke	nkosimpendulom@nicd.ac.za	082 888 6194/083 519 5969
Free State	Moeketse Pheko	moeketsep@nicd.ac.za	060 978 3042/076 889 7319
Gauteng & North West	Bokelani Nyaose	bukelanin@nicd.ac.za	071 670 8741
KwaZulu-Natal	Shakira Naido	shakiran@nicd.ac.za	0713037392
Limpopo	Vuyolwethu Mashamaite	vuyolwethum@nicd.ac.za	0609634834
Mpumalanga	Lesley Ingle	lesleyl@nicd.ac.za	066 308 7539
Northern Cape	Matsheko Thekiso	matshekot@nicd.ac.za	060 984 0980
Western Cape	Washiefa Isaacs	washiefal@nicd.ac.za	064 742 4005