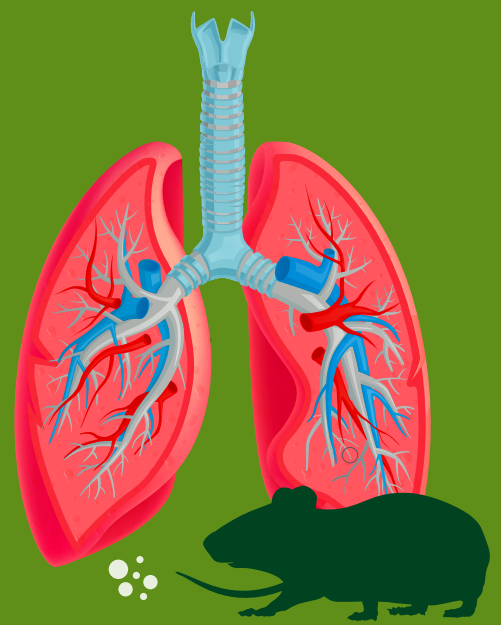


# HANTAVIRUS

## PULMONARY SYNDROME (HPS)

### What you need to know



#### What is HPS?

A rare but serious viral disease that affects the lungs and can cause severe breathing problems.

- Caused by hantaviruses found in core endemic countries such as Argentina, Chile, Brazil, Bolivia and Paraguay.
- It has been reported from parts of North and South America.
- Hantaviruses have not been described from rodents in South Africa.
- Can be life-threatening if not treated early.

#### Symptoms to watch for

Symptoms usually start 1–5 weeks after exposure.

##### Early symptoms



##### Severe symptoms



- Remember:** It is flu season in South Africa! Influenza, COVID-19 and other causes of flu-like illness are more likely the cause of these symptoms.

#### How is it spread?

- In endemic countries: breathing in dust contaminated with rodent urine, droppings, or saliva, touching contaminated surfaces, then touching your face.
- Rarely through rodent bites.
- Depending on the virus strain, no or limited person-to-person spread may occur.

#### South African context

- HPS cases have only been confirmed in a specific group of travellers related to the May 2026 cruise ship outbreak.
- Awareness helps with early diagnosis and better outcomes.

#### What to do if you are sick?

- Seek medical care immediately if you were exposed and have symptoms.
- Tell your healthcare provider if you had contact with a case of HPS.

##### Important to note

HPS can be spread in close contact with infected person.



Early hospital care saves lives.

For more information



STAY INFORMED THROUGH OFFICIAL CHANNELS

