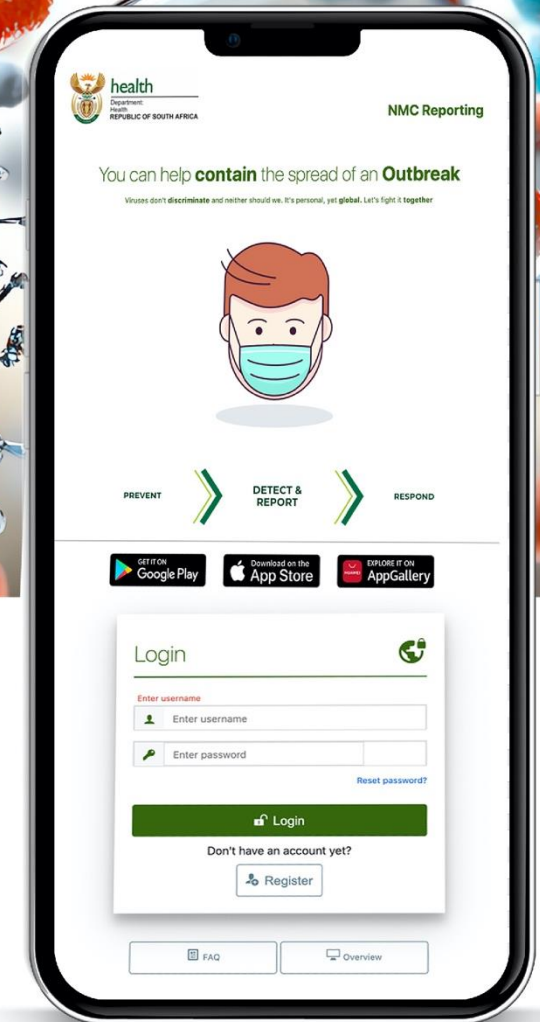
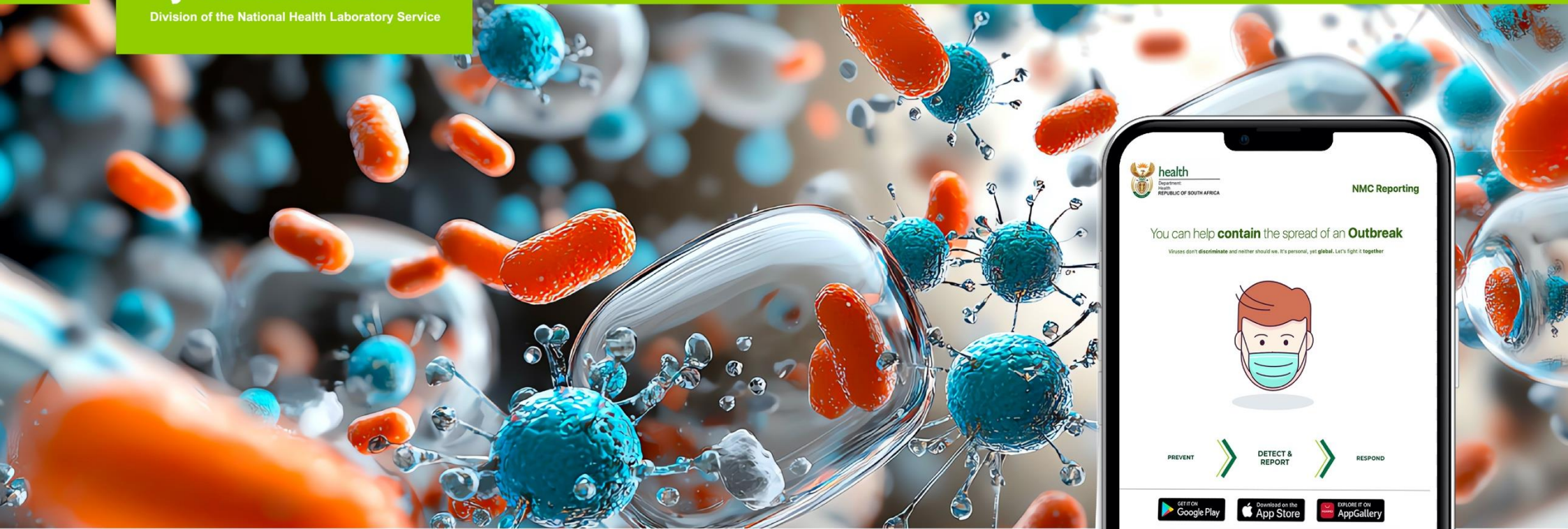




NATIONAL INSTITUTE FOR
COMMUNICABLE DISEASES

Division of the National Health Laboratory Service



Notifiable Medical Conditions Surveillance System Report

April 2026

Division of Public Health, Surveillance and Response

Introduction

This report summarises data from the Notifiable Medical Conditions Surveillance System (NMCSS) on cases notified in **April 2026**. It covers categories 1, 2, and 3 of notifiable medical conditions (NMCs). The data are displayed to show the distribution of case notifications by source (clinical, laboratory, and merged cases; **Table 1**), epidemiological classification, and reported deaths. It monitors NMCSS data quality, specifically completeness and timeliness of notifications upon diagnosis, and back-captured cases notified in April.

NMC highlights

- A total of 10 423 cases were notified to the NMCSS from April 2026; 827 were back captured (**Appendix A**).
- At least 18.6% of the category 1 clinical notifications were matched to laboratory results.
- The majority of the category 1 notifications were measles (n=878, 48%) and malaria (n=550, 30.1%).
- A total of 93 cases of agricultural stock or remedy poisoning were notified; 15 are deceased.
- Overall, it took a median of less than a day (IQR: 0-1 days) to report category 1 NMCs.

Table 1: NMC notifications by category, April 2026

Categories	Clinical n(%)	Laboratory n(%)	Merged n(%)	Total n(%)
1	1 034 (56.5%)	455 (24.9%)	340 (18.6%)	1 829 (19.1%)
2	6 412 (84.0%)	1087 (14.2%)	136 (1.8%)	7 635 (79.6%)
3	0 (0.0%)	124 (93.9%)	8 (6.1%)	132 (1.4%)
Total, n(%)	7 446 (77.6%)	1 666 (17.4%)	484 (5.0%)	9 596

Category 1 Conditions

A total of 1 829 (19.1%) category 1 cases were reported (**Tables 1 and 2**). The majority were measles (n=878, 48%). The weekly [measles and rubella situational reports](#) and [measles/rubella dashboards](#) provide detailed epidemiological analysis. The majority (n=42, 12.9%) of the agricultural or stock remedy poisoning (ASRP) cases were reported in Gauteng (**Table 2**). Furthermore, 5.1% (n=15) of ASRP cases was deceased (**Table 3**). Further epidemiological classification of diphtheria notifications is underway, and the [weekly situational report](#) provides detailed epidemiological analysis.

Table 2: Category 1 NMC notifications by province, April 2026

Condition	EC	FS	GP	KZN	LP	MP	NC	NW	WC	Total, n(%)
Acute Flaccid Paralysis	1 (0.9%)	0 (0.0%)	4 (1.2%)	3 (1.9%)	10 (3.9%)	2 (0.8%)	1 (1.8%)	1 (1.8%)	6 (1.3%)	28 (1.5%)
Acute Rheumatic Fever	0 (0.0%)	0 (0.0%)	0 (0.0%)	0 (0.0%)	0 (0.0%)	0 (0.0%)	0 (0.0%)	0 (0.0%)	2 (0.4%)	2 (0.1%)
Agricultural or stock remedy poisoning	2 (1.7%)	10 (7.2%)	42 (12.9%)	2 (1.3%)	15 (5.8%)	6 (2.3%)	0 (0.0%)	13 (22.8%)	3 (0.6%)	93 (5.1%)
Congenital rubella syndrome	0 (0.0%)	0 (0.0%)	0 (0.0%)	0 (0.0%)	0 (0.0%)	0 (0.0%)	1 (1.8%)	0 (0.0%)	0 (0.0%)	1 (0.1%)
Diphtheria	0 (0.0%)	0 (0.0%)	0 (0.0%)	1 (0.6%)	0 (0.0%)	0 (0.0%)	0 (0.0%)	0 (0.0%)	20 (4.3%)	21 (1.1%)
Enteric fever (typhoid or paratyphoid fever)	0 (0.0%)	0 (0.0%)	7 (2.2%)	0 (0.0%)	0 (0.0%)	1 (0.4%)	0 (0.0%)	1 (1.8%)	1 (0.2%)	10 (0.5%)
Food-borne illness outbreak	2 (1.7%)	0 (0.0%)	5 (1.5%)	7 (4.5%)	13 (5.1%)	3 (1.2%)	0 (0.0%)	1 (1.8%)	2 (0.4%)	33 (1.8%)
Haemolytic uraemic syndrome (HUS)	0 (0.0%)	0 (0.0%)	0 (0.0%)	0 (0.0%)	1 (0.4%)	0 (0.0%)	0 (0.0%)	0 (0.0%)	0 (0.0%)	1 (0.1%)
Listeriosis	0 (0.0%)	0 (0.0%)	1 (0.3%)	0 (0.0%)	0 (0.0%)	0 (0.0%)	0 (0.0%)	0 (0.0%)	3 (0.6%)	4 (0.2%)
Malaria	6 (5.1%)	7 (5.0%)	121 (37.2%)	91 (58.7%)	144 (56.0%)	156 (60.5%)	1 (1.8%)	12 (21.1%)	12 (2.6%)	550 (30.1%)
Measles	93 (79.5%)	103 (74.1%)	77 (23.7%)	33 (21.3%)	67 (26.1%)	75 (29.1%)	47 (82.5%)	14 (24.6%)	369 (79.5%)	878 (48%)
Meningococcal Disease	2 (1.7%)	1 (0.7%)	1 (0.3%)	0 (0.0%)	0 (0.0%)	0 (0.0%)	0 (0.0%)	0 (0.0%)	4 (0.9%)	8 (0.4%)
Mercury poisoning	0 (0.0%)	0 (0.0%)	0 (0.0%)	0 (0.0%)	0 (0.0%)	1 (0.4%)	0 (0.0%)	0 (0.0%)	0 (0.0%)	1 (0.1%)
Mpox	0 (0.0%)	0 (0.0%)	0 (0.0%)	0 (0.0%)	0 (0.0%)	0 (0.0%)	0 (0.0%)	0 (0.0%)	1 (0.2%)	1 (0.1%)
Pertussis	7 (6.0%)	6 (4.3%)	51 (15.7%)	14 (9.0%)	4 (1.6%)	4 (1.6%)	3 (5.3%)	11 (19.3%)	27 (5.8%)	127 (6.9%)
Rabies	1 (0.9%)	0 (0.0%)	0 (0.0%)	0 (0.0%)	0 (0.0%)	0 (0.0%)	0 (0.0%)	0 (0.0%)	0 (0.0%)	1 (0.1%)
Rubella	3 (2.6%)	12 (8.6%)	16 (4.9%)	4 (2.6%)	3 (1.2%)	10 (3.9%)	4 (7.0%)	4 (7.0%)	14 (3%)	70 (3.8%)
Total, n(%)	117 (6.4%)	139 (7.6%)	325 (17.8%)	155 (8.5%)	257 (14.1%)	258 (14.1%)	57 (3.1%)	57 (3.1%)	464 (25.4%)	1 829

Table 3: Category 1 NMC notifications by epidemiological classification and patient vital status, April 2026

Condition	Epidemiological classification					Patient vital status			Total, n(%)
	Clinical notification	Confirmed case	Laboratory notification	Probable case	Suspected case	Alive	Deceased	Unknown	
Acute Flaccid Paralysis	28 (100.0%)	0 (0.0%)	0(0.0%)	0 (0.0%)	0 (0.0%)	28 (100.0%)	0 (0.0%)	0 (0.0%)	28 (1.5%)
Acute Rheumatic Fever	1(50.0%)	1(50.0%)	0 (0.0%)	0 (0.0%)	0 (0.0%)	2 (100.0%)	0 (0.0%)	0 (0.0%)	2 (0.1%)
Agricultural or stock remedy poisoning	93 (100.0%)	0 (0.0%)	0 (0.0%)	0 (0.0%)	0 (0.0%)	77(82.8%)	15(16.1%)	1(1.1%)	93 (5.1%)
Congenital rubella syndrome	1 (100.0%)	0 (0.0%)	0 (0.0%)	0 (0.0%)	0 (0.0%)	1 (100.0%)	0 (0.0%)	0 (0.0%)	1 (0.1%)
Diphtheria*	0 (0.0%)	8(38.1%)	2(9.5%)	0 (0.0%)	11(52.4%)	19(90.5%)	0 (0.0%)	2(9.5%)	21 (1.1%)
Enteric fever	2(20.0%)	8(80.0%)	0 (0.0%)	0 (0.0%)	0 (0.0%)	5(50.0%)	0 (0.0%)	5(50.0%)	10 (0.5%)
Food-borne illness outbreak	33 (100.0%)	0 (0.0%)	0 (0.0%)	0 (0.0%)	0 (0.0%)	31(93.9%)	2(6.1%)	0 (0.0%)	33 (1.8%)
Haemolytic uraemic syndrome	1 (100.0%)	0 (0.0%)	0 (0.0%)	0 (0.0%)	0 (0.0%)	1 (100.0%)	0 (0.0%)	0 (0.0%)	1 (0.1%)
Listeriosis	0 (0.0%)	2(50.0%)	2 (50.0%)	0 (0.0%)	0 (0.0%)	2(50.0%)	2(50.0%)	0 (0.0%)	4 (0.2%)
Malaria**	351(63.8%)	15(2.7%)	184(33.5%)	0 (0.0%)	0 (0.0%)	424(77.1%)	2(0.4%)	124(22.5%)	550 (30.1%)
Measles	435(49.5%)	150(17.1%)	293(33.4%)	0 (0.0%)	0 (0.0%)	502(57.2%)	0 (0.0%)	376(42.8%)	878 (48%)
Meningococcal Disease	0 (0.0%)	6(75.0%)	0 (0.0%)	0 (0.0%)	2(25.0%)	8 (100.0%)	0 (0.0%)	0 (0.0%)	8 (0.4%)
Mercury poisoning	1 (100.0%)	0 (0.0%)	0 (0.0%)	0 (0.0%)	0 (0.0%)	1 (100.0%)	0 (0.0%)	0 (0.0%)	1 (0.1%)
Mpox	0 (0.0%)	1 (100.0%)	0 (0.0%)	0 (0.0%)	0 (0.0%)	1 (100.0%)	0 (0.0%)	0 (0.0%)	1 (0.1%)
Pertussis	25(19.7%)	84(66.1%)	0 (0.0%)	10(7.9%)	8(6.3%)	111(87.4%)	0 (0.0%)	16(12.6%)	127 (6.9%)
Rabies	0 (0.0%)	0 (0.0%)	1 (100.0%)	0 (0.0%)	0 (0.0%)	0 (0.0%)	0 (0.0%)	1 (100.0%)	1 (0.1%)
Rubella	12(17.1%)	0 (0.0%)	58(82.9%)	0 (0.0%)	0 (0.0%)	15(21.4%)	1(1.4%)	54(77.1%)	70 (3.8%)
Total, n(%)	983(53.7%)	275(15%)	540(29.5%)	10(0.5%)	21(1.1%)	1 228(67.1%)	22(1.2%)	579(31.7%)	1 829

*Two of the Diphtheria cases were reported as asymptomatic carriers. ** Malaria diagnosis method: Rapid test (n= 271), Laboratory confirmed (n=279).

Distribution of Category 1 NMC notifications by age and sex, April 2026

The majority of the category 1 NMC notifications were male (n=1 049, 57.4%) and individuals in the 0-9 age group (n=830, 45.4%; **Figure 1**). The male persons were mostly affected by measles (n=485/878, 55.2%) and malaria (n=390/550, 70.9%).

Distribution of category 1 NMC notifications by age and sex, April 2026

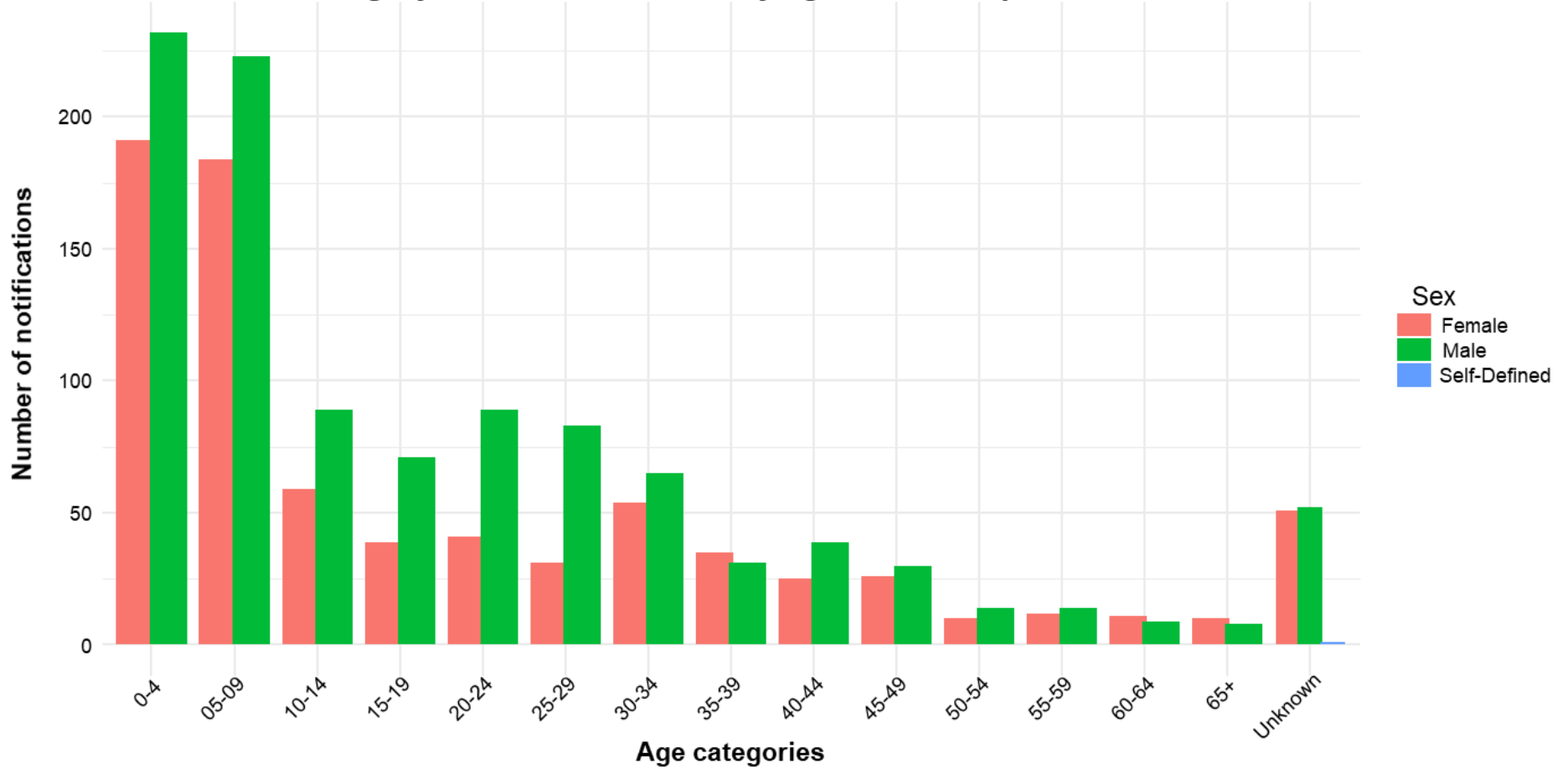


Figure 1: NMC category 1 notifications by age and sex, April 2026

NMC Category hospital completion

At least 649 (35%) category 1 NMC cases with reported admission status as inpatients (n=96,14.8%), discharged (n=131,20.2%), or transferred out (n=52, 8.0%), making these cases eligible for completion of the hospitalisation form. For either admission status (**Figure 2**), the majority had the hospitalisation form incomplete (n=512, 78.9%).

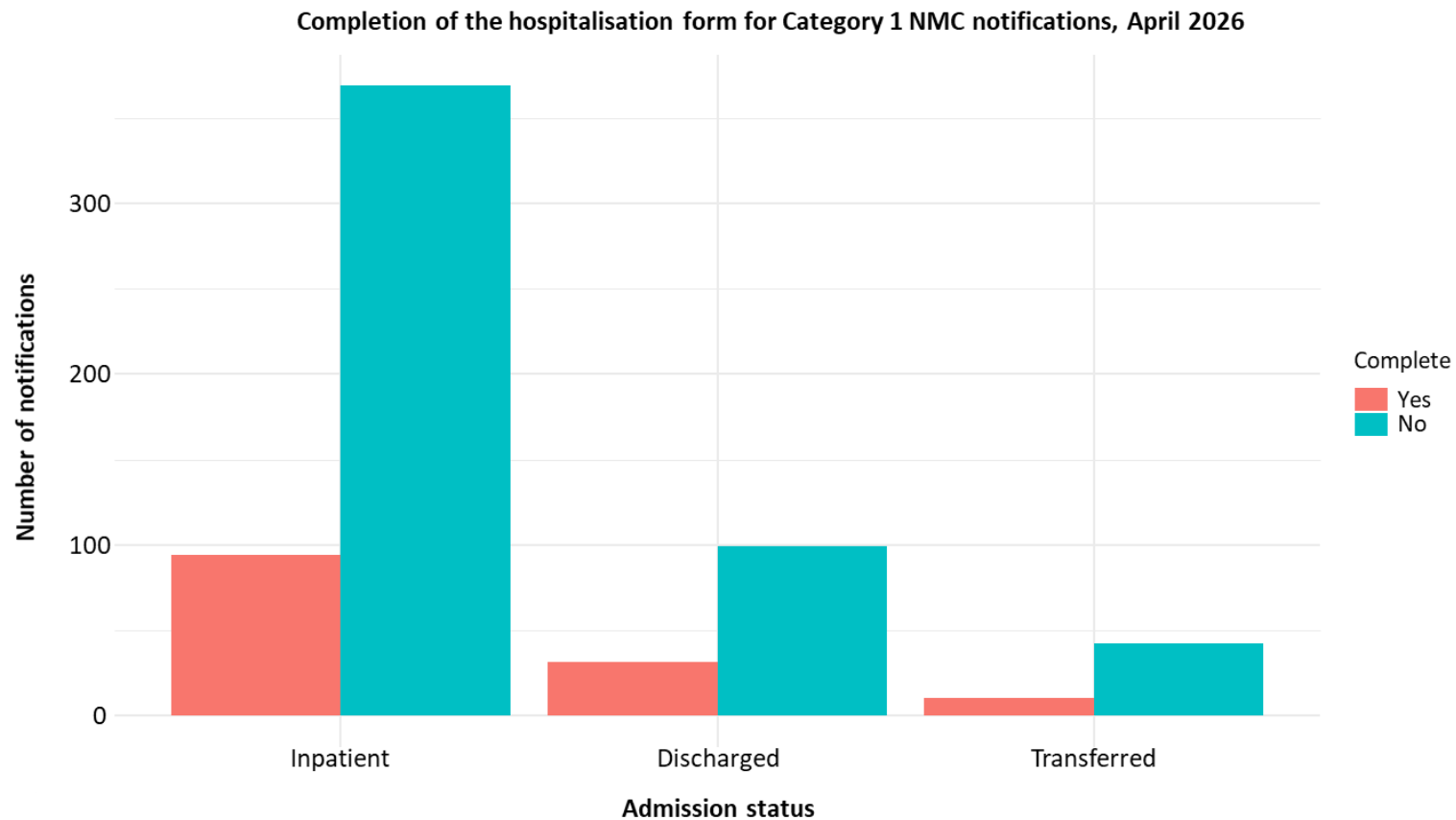


Figure 2: Completion of the hospitalisation form for inpatient, discharge or transferred out for Category 1 NMC patients, April 2026

Category 2 Notifications

The commonly notified category 2 conditions in April 2026 were pulmonary TB (n=5 041, 66%) and extra-pulmonary TB (n=991, 13%) (**Table 4**). The [End TB dashboard](#) provides detailed epidemiology of TB in South Africa.

Table 4: Category 2 notifications by province, April 2026

Condition	EC	FS	GP	KZN	LP	MP	NC	NW	WC	Total, n(%)
Bilharzia (schistosomiasis)	35 (4.9%)	0 (0.0%)	16 (1.0%)	241 (10.9%)	145 (28.1%)	75 (26.9%)	0 (0.0%)	1 (0.3%)	18 (1.4%)	531 (7.0%)
Brucellosis	0 (0.0%)	0 (0.0%)	2 (0.1%)	0 (0.0%)	0 (0.0%)	0 (0.0%)	1 (0.3%)	0 (0.0%)	0 (0.0%)	3 (0.0%)
Congenital syphilis	3 (0.4%)	0 (0.0%)	7 (0.4%)	13 (0.6%)	0 (0.0%)	1 (0.4%)	3 (0.9%)	0 (0.0%)	23 (1.8%)	50 (0.7%)
Haemophilus influenzae type B	1 (0.1%)	0 (0.0%)	0 (0.0%)	0 (0.0%)	0 (0.0%)	0 (0.0%)	0 (0.0%)	0 (0.0%)	0 (0.0%)	1 (0.0%)
Hepatitis A	12 (1.7%)	7 (2.2%)	34 (2.1%)	21 (0.9%)	10 (1.9%)	10 (3.6%)	2 (0.6%)	13 (3.7%)	37 (2.9%)	146 (1.9%)
Hepatitis B	81 (11.2%)	19 (5.8%)	58 (3.6%)	471 (21.3%)	14 (2.7%)	8 (2.9%)	32 (9.1%)	11 (3.2%)	9 (0.7%)	703 (9.2%)
Hepatitis C	1 (0.1%)	0 (0.0%)	7 (0.4%)	3 (0.1%)	1 (0.2%)	2 (0.7%)	0 (0.0%)	0 (0.0%)	1 (0.1%)	15 (0.2%)
Hepatitis E	0 (0.0%)	1 (0.3%)	1 (0.1%)	0 (0.0%)	0 (0.0%)	0 (0.0%)	0 (0.0%)	0 (0.0%)	0 (0.0%)	2 (0.0%)
Lead poisoning	0 (0.0%)	0 (0.0%)	0 (0.0%)	0 (0.0%)	0 (0.0%)	0 (0.0%)	0 (0.0%)	0 (0.0%)	1 (0.1%)	1 (0.0%)
Legionellosis	4 (0.6%)	0 (0.0%)	6 (0.4%)	3 (0.1%)	0 (0.0%)	0 (0.0%)	0 (0.0%)	0 (0.0%)	1 (0.1%)	14 (0.2%)
Leprosy	0 (0.0%)	0 (0.0%)	0 (0.0%)	0 (0.0%)	0 (0.0%)	0 (0.0%)	1 (0.3%)	0 (0.0%)	0 (0.0%)	1 (0.0%)
Maternal death (pregnancy, childbirth and puerperium)	0 (0.0%)	1 (0.3%)	0 (0.0%)	0 (0.0%)	1 (0.2%)	0 (0.0%)	0 (0.0%)	0 (0.0%)	0 (0.0%)	2 (0.0%)
Soil-transmitted helminths	0 (0.0%)	1 (0.3%)	0 (0.0%)	1 (0.0%)	0 (0.0%)	0 (0.0%)	0 (0.0%)	0 (0.0%)	0 (0.0%)	2 (0.0%)
Tetanus	0 (0.0%)	0 (0.0%)	0 (0.0%)	0 (0.0%)	1 (0.2%)	1 (0.4%)	0 (0.0%)	0 (0.0%)	0 (0.0%)	2 (0.0%)
Tuberculosis: extensively drug-resistant	1 (0.1%)	1 (0.3%)	1 (0.1%)	2 (0.1%)	0 (0.0%)	1 (0.4%)	1 (0.3%)	1 (0.3%)	0 (0.0%)	8 (0.1%)
Tuberculosis: multidrug-resistant	7 (1.0%)	15 (4.6%)	25 (1.6%)	44 (2.0%)	6 (1.2%)	3 (1.1%)	1 (0.3%)	5 (1.4%)	16 (1.2%)	122 (1.6%)
Tuberculosis: extra-pulmonary	101 (14.0%)	32 (9.8%)	352 (22.1%)	226 (10.2%)	43 (8.3%)	23 (8.2%)	31 (8.8%)	54 (15.5%)	129 (10.0%)	991 (13.0%)
Tuberculosis: pulmonary	475 (65.9%)	248 (76.3%)	1 085 (68.1%)	1 186 (53.6%)	295 (57.2%)	155 (55.6%)	279 (79.5%)	263 (75.6%)	1 055 (81.8%)	5 041 (66.0%)
Total, n(%)	721 (9.4%)	325 (4.3%)	1 594 (20.9%)	2 211 (29%)	516 (6.8%)	279 (3.7%)	351 (4.6%)	348 (4.6%)	1 290 (16.9%)	7 635

Distribution of Category 2 NMC notifications by age and sex, April 2026

The majority of the category 2 NMC notifications were male (n=4 430, 58.0%) and individuals in the 25 to 54 age group (n= 4 438, 58.1%; **Figure 3**). The male persons were mostly affected by pulmonary tuberculosis.

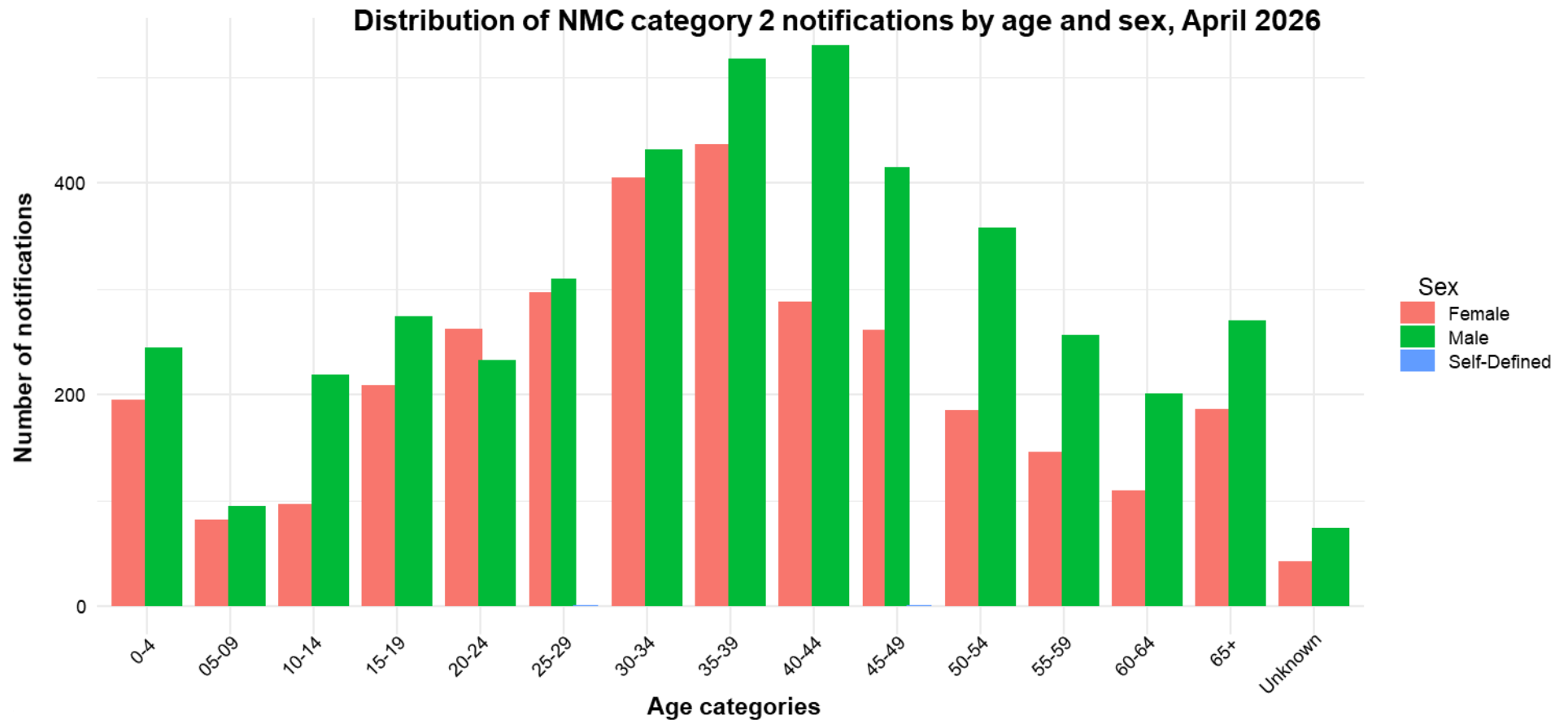


Figure 3: Distribution of category 2 NMC notifications by age and sex, April 2026

Category 3 conditions

The Western Cape reported the most (n=75, 56.8%) of the category 3 condition, including a case of Dengue fever virus infection (**Table 5**). The Mpumalanga and North West provinces had no category 3 conditions diagnosed.

Table 5: Distribution of category 3 notification by province, April 2026

Condition	EC	FS	GP	KZN	LP	MP	NC	NW	WC	Total, n(%)
Dengue Fever Virus	0 (0.0%)	0 (0.0%)	1 (5.0%)	0 (0.0%)	0 (0.0%)	0 (0.0%)	0 (0.0%)	0 (0.0%)	1 (1.3%)	2 (1.5%)
Endemic arboviral diseases Sindbis Virus	0 (0.0%)	0 (0.0%)	1 (5.0%)	0 (0.0%)	0 (0.0%)	0 (0.0%)	0 (0.0%)	0 (0.0%)	0 (0%)	1 (0.8%)
Non-typhoidal Salmonellosis	9 (42.9%)	1 (20.0%)	13 (65.0%)	0 (0.0%)	0 (0.0%)	0 (0.0%)	0 (0.0%)	0 (0.0%)	41 (54.7%)	64 (48.5%)
Shigellosis	12 (57.1%)	4 (80.0%)	5 (25.0%)	7 (100%)	2 (100%)	0 (0.0%)	2 (100%)	0 (0.0%)	33 (44%)	65 (49.2%)
Total, n(%)	21(15.9)	5(3.8)	20(15.2)	7(5.3)	2(1.5)	0 (0.0%)	2 (1.5%)	0 (0.0%)	75(56.8)	132

Timeliness and completeness of NMC data

Timeliness is measured as the number of days from the time of diagnosis of the NMC to the time of notification. Overall, it took a median of less than a day (IQR: 0- 1 days) to report category 1 NMCs in April 2026 (**Table 6**).

Table 6: Time to notification of category 1 and 2 NMC, April 2026

		EC	FS	GP	KZN	LP	MP	NC	NW	WC	Overall
Category 1	n	117	139	325	155	257	257	57	57	464	1 828
	Median (IQR*)	0 (0–1)	0 (0–1)	1 (0–2)	0 (0–0)	0 (0–1.5)	0 (0–0)	0 (0–0.25)	1 (0–1)	0 (0–1)	0 (0–1)
Category 2	n	721	325	1 594	2 211	516	280	351	348	1290	7636
	Median (IQR*)	2 (0–7)	2 (0–7)	2 (0–8)	1 (0–6)	1 (0–6)	1 (0–7)	3 (0–14)	2 (0–7)	2 (0–6)	2 (0–7)

*IQR: Interquartile range

Completeness refers to the proportion of complete data entries per variable in the dataset among clinical and merged notifications. **Figure 4** reports a completion rate of more than 80% for patient address and less than 62.5% for national identification number.

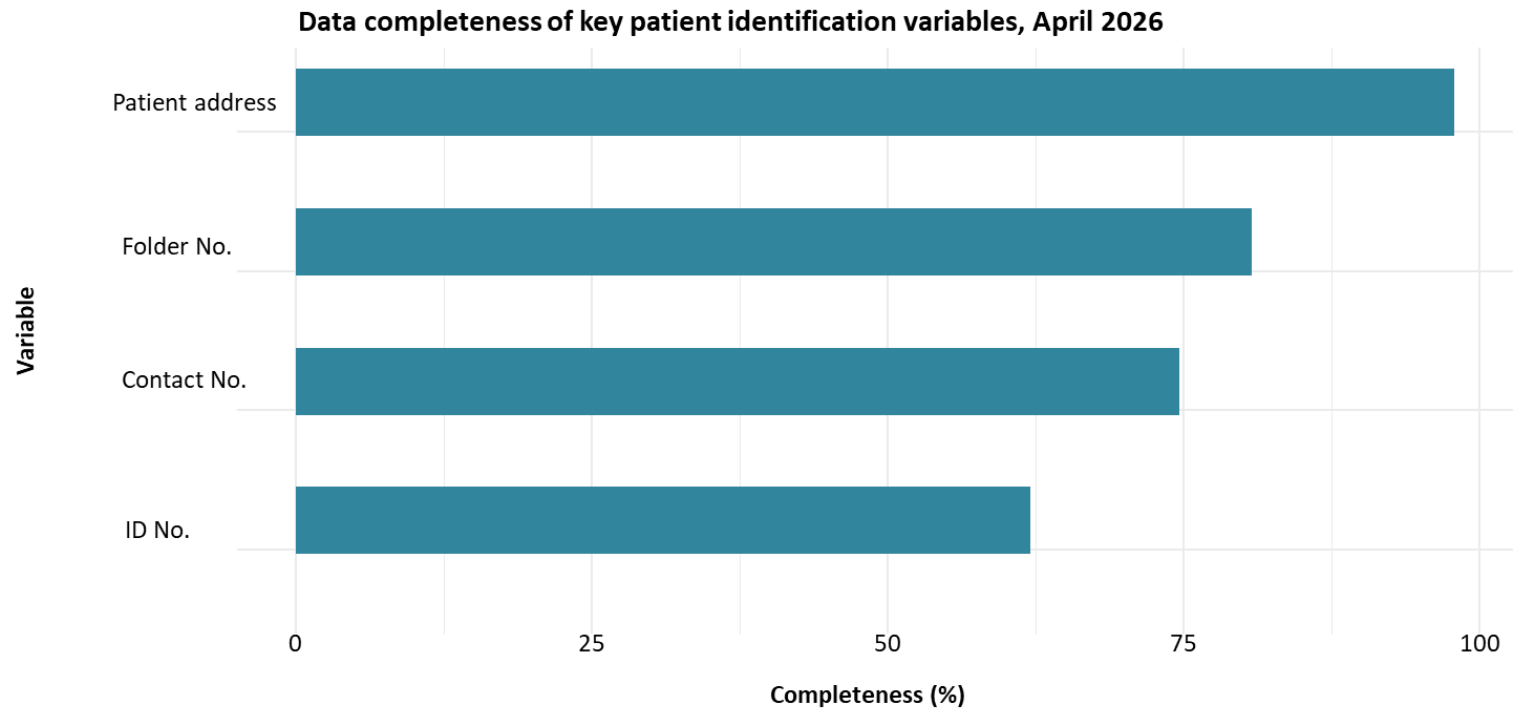


Figure 4: Data completeness of key patient identification variables, April 2026

Recommendations

- We recommend that clinicians complete all patient clinical and demographic details to improve NMC data quality.
- We recommend completion of the hospitalisation form for all patients admitted to the hospital with category 1 NMCs.
- Feel free to reach out to NMCsurveillanceReport@nicd.ac.za

Appendix A: Back capture notification: All cases diagnosed in previous months and before the last 14 days of March 2026, and notified in April 2026.

Condition	EC	FS	GP	KZN	LP	MP	NC	NW	WC	Total, n(%)
Bilharzia (schistosomiasis)	0 (0.0%)	0 (0.0%)	0 (0.0%)	3 (1.8%)	0 (0.0%)	0 (0.0%)	0 (0.0%)	0 (0.0%)	0 (0.0%)	3 (0.4%)
Congenital syphilis	2 (2.9%)	0 (0.0%)	0 (0.0%)	0 (0.0%)	0 (0.0%)	0 (0.0%)	1 (1.6%)	0 (0.0%)	1 (0.8%)	4 (0.5%)
Hepatitis B	5 (7.4%)	0 (0.0%)	10 (4.5%)	2 (1.2%)	1 (2.7%)	0 (0.0%)	1 (1.6%)	0 (0.0%)	0 (0.0%)	19 (2.3%)
Hepatitis C	0 (0.0%)	0 (0.0%)	3 (1.3%)	0 (0.0%)	0 (0.0%)	0 (0.0%)	0 (0.0%)	0 (0.0%)	0 (0.0%)	3 (0.4%)
Leprosy	0 (0.0%)	0 (0.0%)	0 (0.0%)	1 (0.6%)	0 (0.0%)	0 (0.0%)	0 (0.0%)	0 (0.0%)	0 (0.0%)	1 (0.1%)
Malaria	0 (0.0%)	0 (0.0%)	1 (0.4%)	0 (0.0%)	3 (8.1%)	0 (0.0%)	0 (0.0%)	0 (0.0%)	0 (0.0%)	4 (0.5%)
Maternal death (pregnancy, childbirth and puerperium)	0 (0.0%)	0 (0.0%)	1 (0.4%)	0 (0.0%)	0 (0.0%)	0 (0.0%)	0 (0.0%)	0 (0.0%)	0 (0.0%)	1 (0.1%)
Measles	0 (0.0%)	0 (0.0%)	0 (0.0%)	0 (0.0%)	8 (21.6%)	0 (0.0%)	0 (0.0%)	0 (0.0%)	0 (0.0%)	8 (1%)
Pertussis	0 (0.0%)	0 (0.0%)	0 (0.0%)	1 (0.6%)	0 (0.0%)	0 (0.0%)	0 (0.0%)	0 (0.0%)	0 (0.0%)	1 (0.1%)
Tuberculosis: extensively drug -resistant	0 (0.0%)	0 (0.0%)	0 (0.0%)	0 (0.0%)	0 (0.0%)	0 (0.0%)	1 (1.6%)	0 (0.0%)	0 (0.0%)	1 (0.1%)
Tuberculosis: multidrug- resistant	1 (1.5%)	3 (2.3%)	4 (1.8%)	13 (7.8%)	0 (0.0%)	0 (0.0%)	0 (0.0%)	0 (0.0%)	5 (4.2%)	26 (3.1%)
Tuberculosis:extra-pulmonary	13 (19.1%)	14 (10.8%)	52 (23.3%)	17 (10.2%)	2 (5.4%)	0 (0.0%)	4 (6.6%)	8 (44.4%)	20 (16.9%)	130 (15.7%)
Tuberculosis:pulmonary	47 (69.1%)	113 (86.9%)	152 (68.2%)	129 (77.2%)	23 (62.2%)	5 (100%)	54 (88.5%)	10 (55.6%)	92 (78%)	625 (75.6%)
Waterborne illness outbreak - UNDEFINED	0 (0.0%)	0 (0.0%)	0 (0.0%)	1 (0.6%)	0 (0.0%)	0 (0.0%)	0 (0.0%)	0 (0.0%)	0 (0.0%)	1 (0.1%)
Total, n(%)	68 (8.2%)	130 (15.7%)	223 (27%)	167 (20.2%)	37 (4.5%)	5 (0.6%)	61 (7.4%)	18 (2.2%)	118 (14.3%)	827

Additional resources

NMC reporting tutorials video: <https://www.nicd.ac.za/nmc-overview/tutorial-videos/>

NMC Categories, and Case Classification Definitions: <https://www.nicd.ac.za/nmc-overview/nmc-resources/>

NMC Surveillance Officers List and contacts

Province	Name & Surname	Email address	Cell Numbers
Eastern Cape	Nkosiphendule Mngceke	nkosimphendulem@nicd.ac.za	082 888 6194/083 519 5969
Free State	Moeketsi Pheko	moeketsip@nicd.ac.za	060 978 3043/076 889 7319
Gauteng & Northwest	Bukelani Nyawose	bukelanin@nicd.ac.za	071 670 8741
KwaZulu-Natal	Sharika Naidoo	sharikan@nicd.ac.za	071 303 7392
Limpopo	Vuyolwethu Mashamaite	vuyolwethum@nicd.ac.za	060 963 4834
Mpumalanga	Lesley Ingle	lesleyl@nicd.ac.za	066 308 7539
Northern Cape	Matsheko Thekiso	matshekot@nicd.ac.za	060 984 0980
Western Cape	Washiefal Isaacs	washiefal@nicd.ac.za	064 742 4005

The End!